



UNITED STATES  
POSTAL SERVICE®

**Owensboro, KY  
Area Mail Processing (AMP)  
Public Meeting**

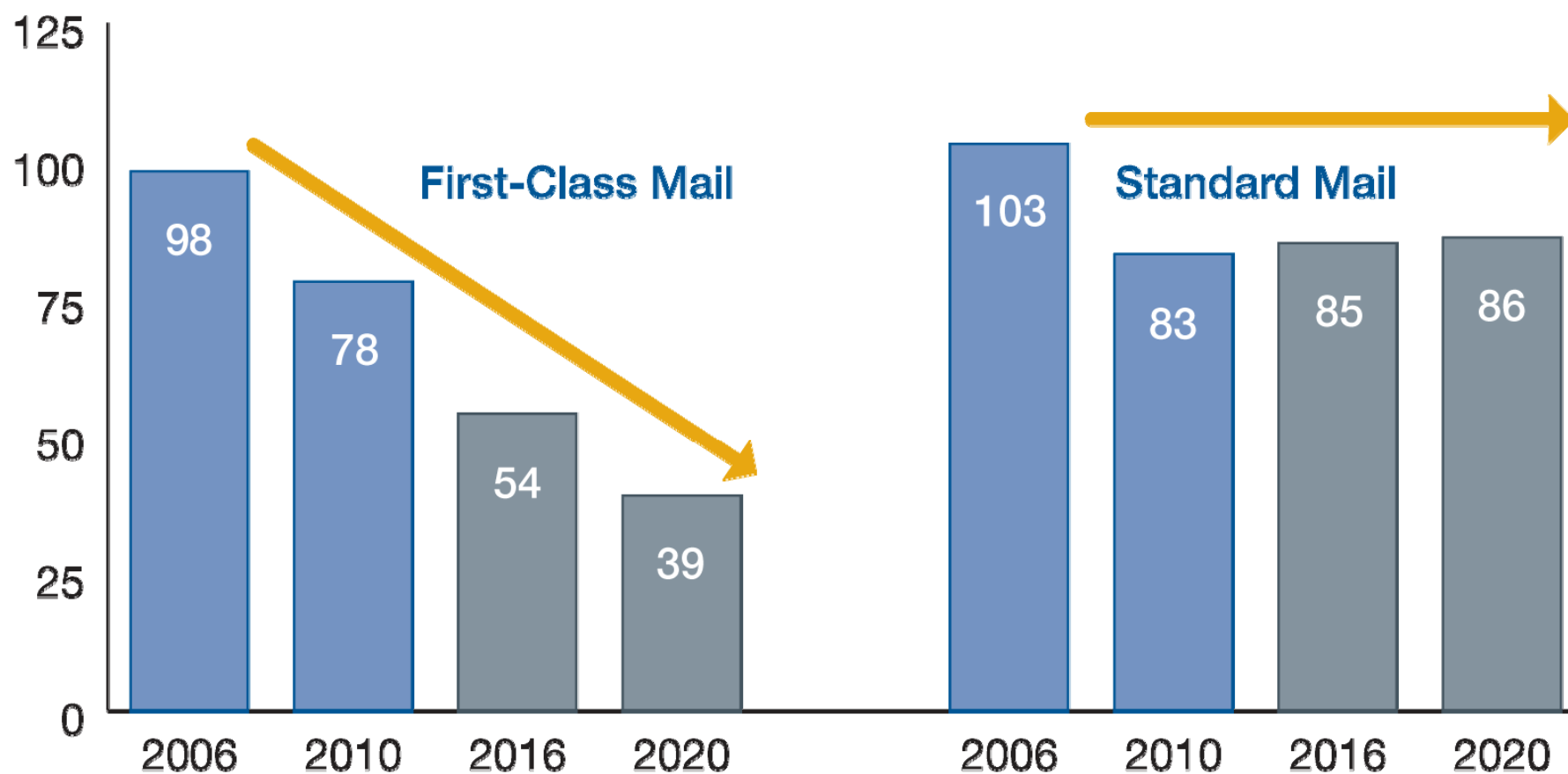
**November 3, 2011**



# Two Topics

**Radical  
Network  
Realignment**

**Area Mail  
Processing  
Study**



Volume in Billions of Pieces

# NETWORK CAPACITY

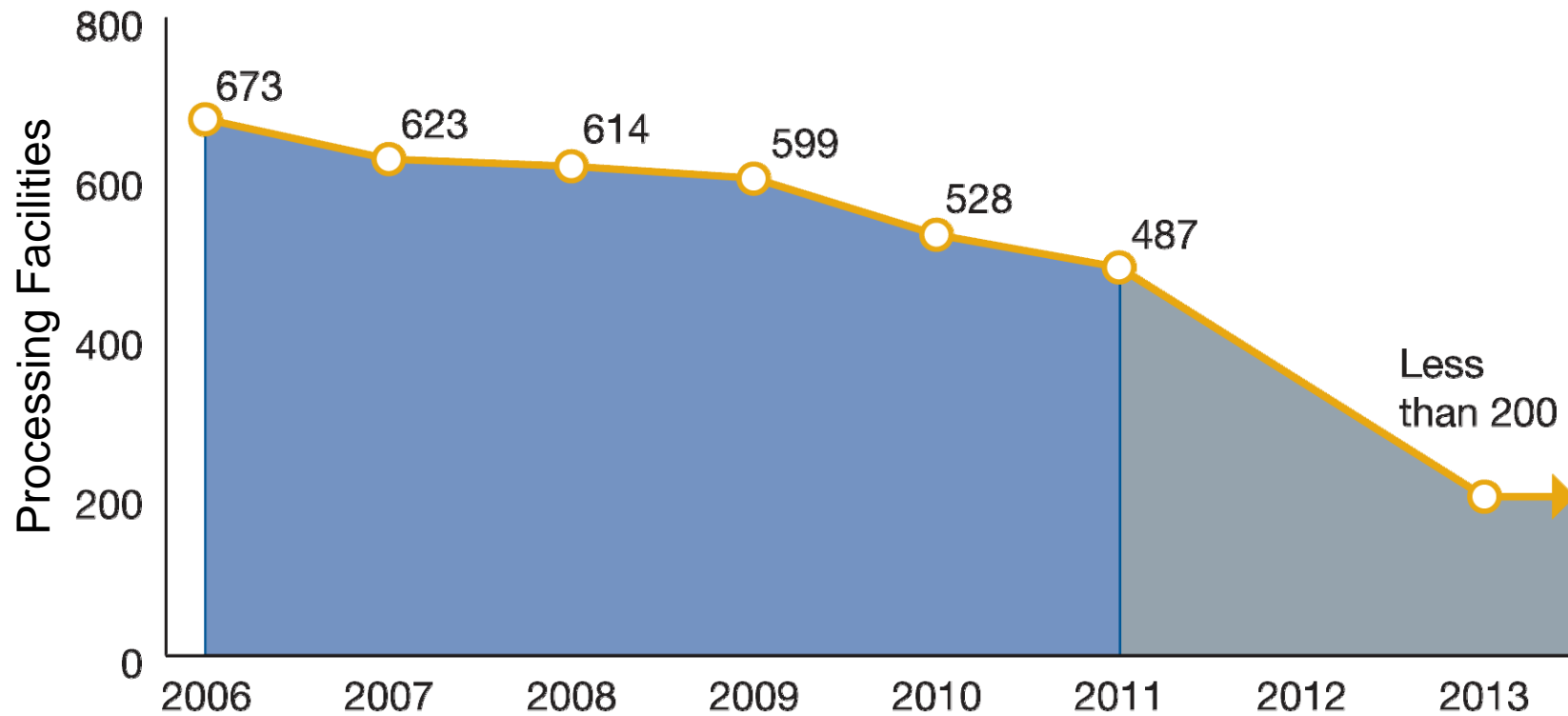
**GROWTH**  
Capacity Expansion



# NETWORK CAPACITY



## Potential Decrease in Processing Facilities Through 2013



## 487 Facilities Today



● Current Mail Processing Sites

## Studying 252 Facilities for Potential Consolidation



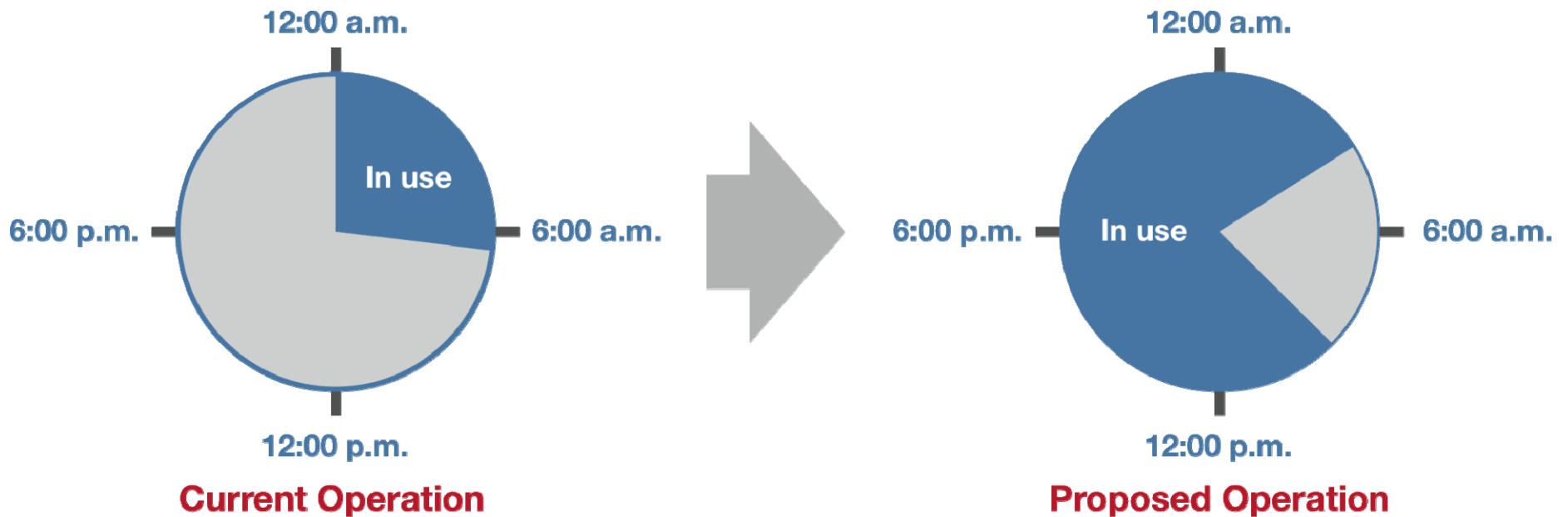


## Potential Network





**Mail Processing Facility**



## **FUTURE NETWORK**

- Support 2-3 day Service Standards
  - Revised Entry Times
  - Reduced Equipment
  - Reduced Footprint
- 

## **BENEFITS**

- Eliminate Excess Capacity
- More Efficient Transportation Network
- Fully Utilized Workforces
- Substantial Savings

## CHANGES

- Planning for new mail processing footprint and transport pattern
  - Transitioning to 2-3 day service standard
- 

## OUR APPROACH

- Ongoing communication and collaborative solutions

**559,000**

Total Career Employees

**151,000**

Total Mail Processing Employees

**35,000**

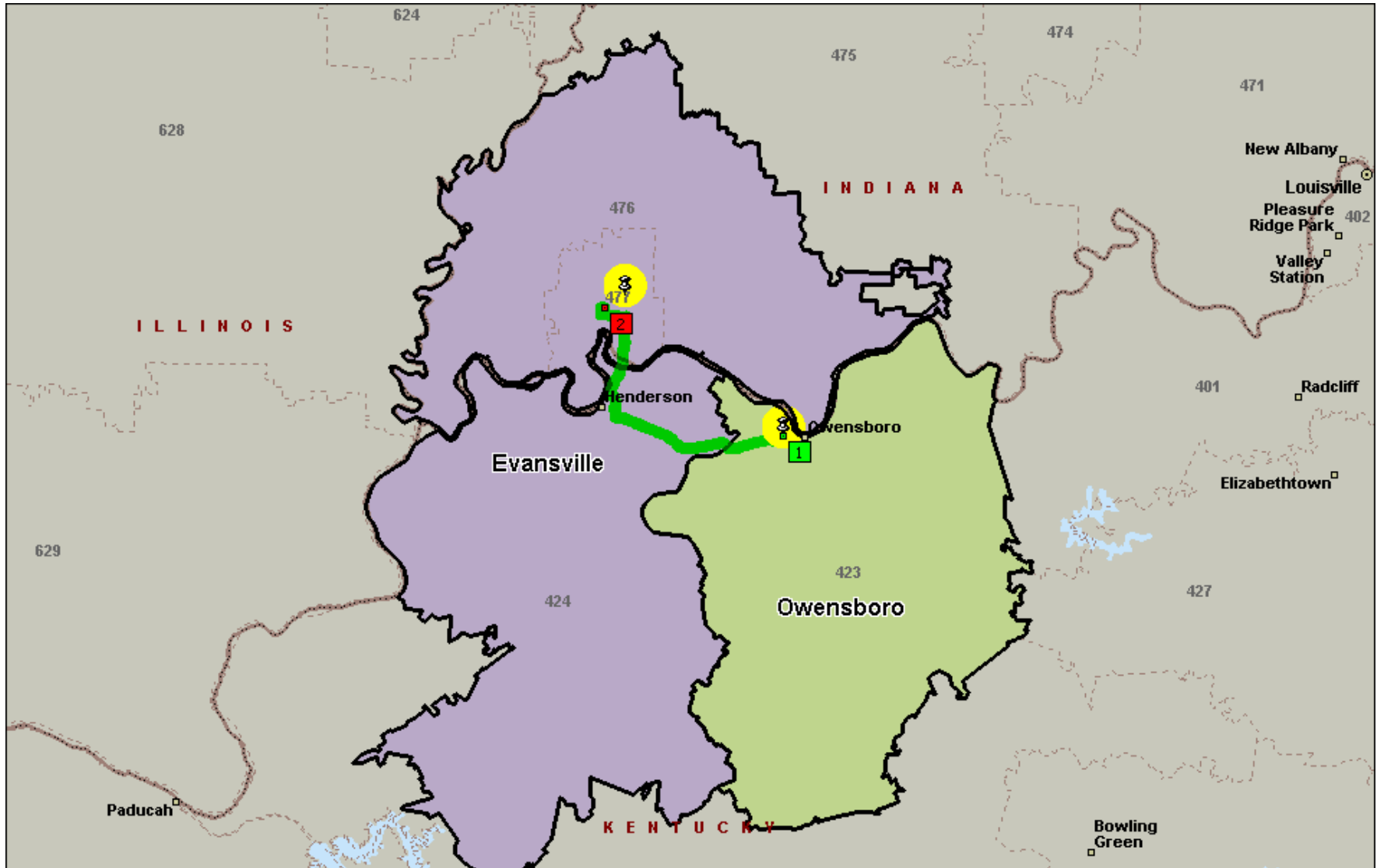
Fewer Mail Processing Positions



# Topic

**Area Mail  
Processing  
Study**

# DISTANCE BETWEEN FACILITIES – 43.1 miles



## BUSINESS CASE\*

Mail Processing Workhour Savings: \$56,161

Transportation Savings: \$183,918

---

Proposed Annual Savings: \$3,346,630

**\*Preliminary results subject to change**



## **EMPLOYEE IMPACTS\***

Net craft impacts: -1

All bargaining employee reassignments will be made in accordance with the respective collective bargaining agreements.

**\*Preliminary results subject to change**

## CUSTOMER & DELIVERY SERVICES

- Retail hours remain the same
- Business mail acceptance remains the same
- Collection mail remains the same
- Local postmark remains
- Mailers who drop ship to DCSF 423 can expect changes if the AMP is approved

## First-Class Mail Service Standard Changes

- Upgrade 2-day to Overnight
  - Paducah to Owensboro
  - Terre Haute to Owensboro

## NEXT STEPS

- Complete Area and HQ review
- Review Public Comments



*Mail additional comments to:*

Manager, Consumer & Industry Contact  
Kentuckiana District  
PO Box 31631  
Louisville, KY 40231-9631

*Must be postmarked by November 18, 2011*