

AUCTION SUMMARY

TO_LS751		3,360 hd		Tuesday	
RIVERTON LIVESTOCK AUCTION					
		Riverton, WY			
Feeder Steers	400-500 lbs	102.00-111.00	Feeder Heifers	400-500 lbs	93.00-95.00
Medium &	500-600 lbs	pkg 99.50	Medium &	500-600 lbs	
Large #1	600-700 lbs	95.00-103.60	Large #1	600-700 lbs	90.25-97.00
	700-800 lbs	95.00-102.25		700-800 lbs	88.00-95.00
	800-900 lbs	89.75-102.25		800-900 lbs	84.75-92.10

JC_LS763		2,429 hd		Tuesday	
OZARKS REGIONAL STOCKYARD					
		West Plains, MO			
Feeder Steers	400-500 lbs	103.00-119.00	Feeder Heifers	400-500 lbs	95.00-105.00
Medium &	500-600 lbs	102.00-112.50	Medium &	500-600 lbs	90.00-99.00
Large #1	600-700 lbs	100.00-106.50	Large #1	600-700 lbs	92.00-95.50
	700-800 lbs	91.00-99.25		700-800 lbs	pkg 86.00
	800-900 lbs	91.00-94.50		800-900 lbs	

NW_LS754		2,000 hd		Tuesday	
HUMESTON LIVESTOCK AUCTION					
		Humeston, IA			
Feeder Steers	400-500 lbs	109.50-117.75	Feeder Heifers	400-500 lbs	97.00-103.00
Medium &	500-600 lbs	100.00-108.25	Medium &	500-600 lbs	96.75-102.25
Large #1	600-700 lbs	100.00-108.50	Large #1	600-700 lbs	97.00-100.75
	700-800 lbs	100.00-105.50		700-800 lbs	90.50-94.75
	800-900 lbs	96.75-98.25		800-900 lbs	

[Live Cattle Settlements](#) [Feeder Cattle Settlements](#) Wednesday

CHICAGO MERCANTILE EXCHANGE LIVESTOCK FUTURES SETTLEMENT			
Live Cattle	Change	Feeder Cattle	Change
Oct	87.55	Sep	99.80
Dec	87.42	Oct	100.22
Feb	88.20	Nov	101.02
	0.45		0.75
	0.55		1.05
	0.32		1.15

[Corn Settlements](#) [Soybean Settlements](#) Wednesday

CHICAGO BOARD OF TRADE GRAIN FUTURES SETTLEMENT			
Corn	Change	Soybeans	Change
Sep	3.05 1/2	Sep	9.61 1/2
Dec	3.09 3/4	Nov	9.28 1/2
Mar	3.23 1/4	Jan	9.35 3/4
	2 3/4		(7 1/2)
	2 1/4		(8)
	2 1/4		(7 1/2)

SJ_GR710		Wheat		Change	
KANSAS CITY BOARD OF TRADE					
WHEAT FUTURES SETTLEMENT					
		Sep	4.60 1/2		(4 1/2)
		Dec	4.72 1/2		(5 1/2)
		Mar	4.88 1/2		(5 3/4)

[LM_CT100](#) Wednesday

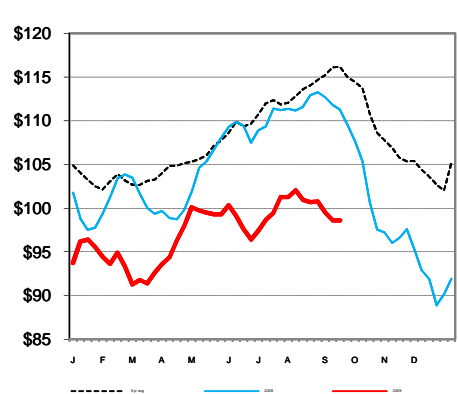
5 AREA WKLY ACCUMULATED WTD AVG SLAUGHTER CATTLE PRICE			
	Head Count	Avg Weight	Avg Price
Live Steer	507	1,358	83.12
Live Heifer	125	1,209	84.00
Dressed Steer	210	868	129.18
Dressed Heifer	216	824	131.00

[LM_XB403](#) Wednesday

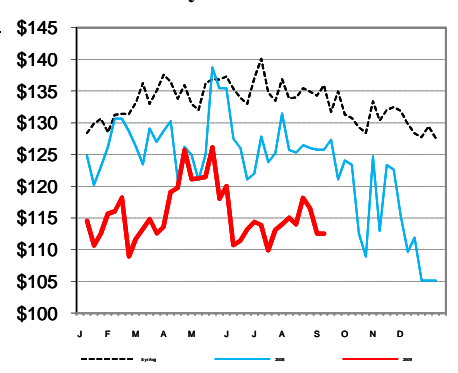
DAILY ESTIMATED BOXED BEEF CUTOUT VALUES					
Choice	Select	Choice Cuts	101	Loads	
600-900#	600-900#	Select Cuts	91	Loads	
142.69	134.47	Trimming	46	Loads	
0.19	(0.11)	Grinds	102	Loads	

SJ_LS710		KO_LS151	
ESTD DAILY CATTLE SLAUGHTER		SLAUGHTER COW MARKET	
Wed (est)	130,000	Oklahoma National Stockyards	
Week Ago (est)	129,000	Tuesday	Pct Lean Price
Year Ago (act)	128,000	Breaking	75-80 45.00
Wk to date (est)	262,000	Boning	80-85 46.00-48.50
Last Week (est)	386,000	Lean	85-90 42.00-44.50
Last Year (act)	382,000	Tuesday	
Previous Day Estimated:	Steer and Heifer	103,000	
	Cow and Bull	26,000	

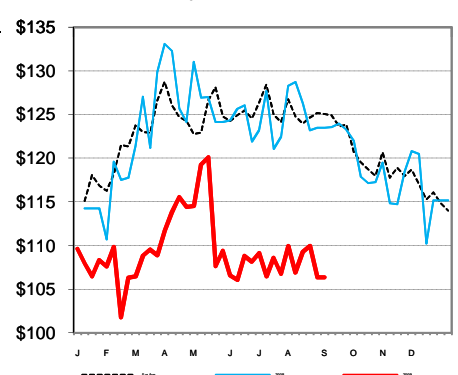
CME Feeder Cattle Index



Oklahoma City 400-500 lb Steer Price



Oklahoma City 500-600 lb Steer Price



Oklahoma City 700-800 lb Steer Price

