

DAILY DIRECT HOGS PLANT DELIVERED as of 1:30 PMNATIONAL - LM HG203:

Carcass Basis Negotiated Barrows & Gilts: **21,804**
 Compared to prior day's close, **0.21 higher**
 Base Price Range: **\$41.00 - \$52.53** Wtd Avg: **\$49.51**

IOWA/MINNESOTA - LM HG206:

Carcass Basis Negotiated Barrows & Gilts: **12,091**
 Compared to prior day's close, **0.61 higher**
 Base Price Range: **\$41.00 - \$51.50** Wtd Avg: **\$50.96**

WESTERN CORNBELT - LM HG212:

Carcass Basis Negotiated Barrows & Gilts: **15,220**
 Compared to prior day's close, **0.51 higher**
 Base Price Range: **\$41.00 - \$52.53** Wtd Avg: **\$51.01**

EASTERN CORNBELT - LM HG210:

Carcass Basis Negotiated Barrows & Gilts: **6,584**
 Compared to prior day's close, **0.34 lower**
 Base Price Range: **\$41.50 - \$50.00** Wtd Avg: **\$46.03**

NATIONAL DAILY LEAN HOG SLTR COST - LM HG213

Tuesday, 8-Sep-09	Head Count	Avg Carcass Wt	49-50%	51-52%	53-54%
	180,774	201.48	\$48.35	\$50.10	\$51.99

USDA NATIONAL CARLOT PORK REPORT - NW LS500

Carcass Cutout Values	54.15	Change:	0.86
Primal Loin	69.29		3.95
Primal Butt	56.40		(-0.84)
Primal Picnic	35.38		(-0.48)
Primal Rib	78.37		(-2.73)
Primal Ham	44.31		(-0.69)
Primal Belly	66.00		1.93
Total Loads	100.5	Lds	
Pork Cuts	90.5	Lds	
Trim/Process Pork	10.0	Lds	

DAILY EST. HOG SLAUGHTER UNDER FIS - SJ LS710

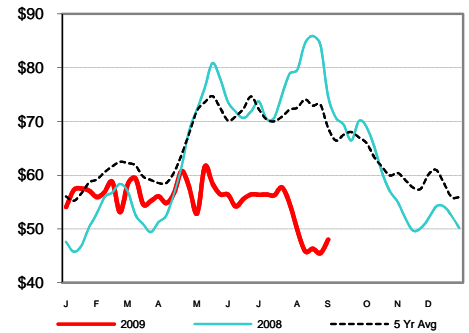
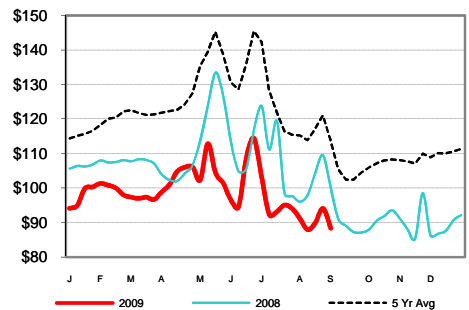
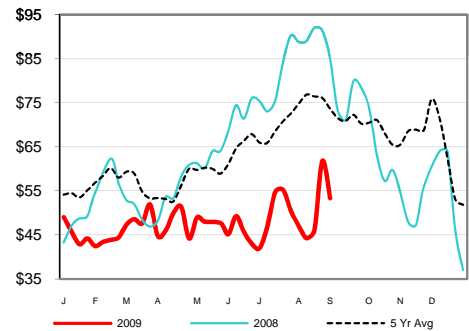
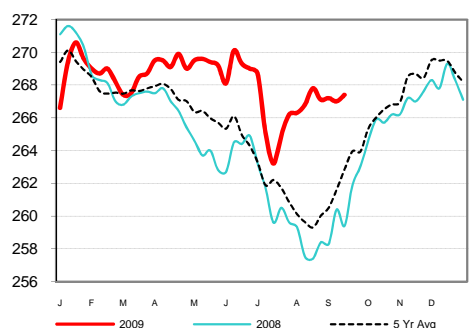
Today (est)	427,000
Week Ago (est)	430,000
Year Ago (act)	433,000
Week to Date (est)	863,000
Same Period Last Week (est)	1,292,000
Same Period Last Year (act)	1,295,000

CME LEAN HOG CLOSE

	High	Low	Settle	Change
OCT	51.90	51.00	51.45	0.47
DEC	50.00	48.85	49.65	0.70
FEB	56.35	55.05	56.23	1.47
APR	61.90	59.90	61.83	1.92

CME Lean Hog Delayed Futures - Pit-TradedIOWA-SOUTHERN MINNESOTA WEEKLY AVERAGE WEIGHT - NW LS720

For Weekending Sat, 5-Sep-09	Week Ending	Head Count	Average Weight
	9/5/2009	432,000	267.4
Week Ago:	8/29/2009	399,000	267.0
Year Ago:	9/6/2008	362,000	259.4

Weekly National Hog P.M. Wtd. AvgWeekly Sparerib Primal Value20-23# TS1 Ham Weekly Wtd AvgIowa-S.MN Average Hog Weight

USDA Livestock & Grain Market News

Des Moines, Iowa

Phone: 515-284-4460

Email: desm.lgmn@usda.govwww.ams.usda.gov/LSMarketNews