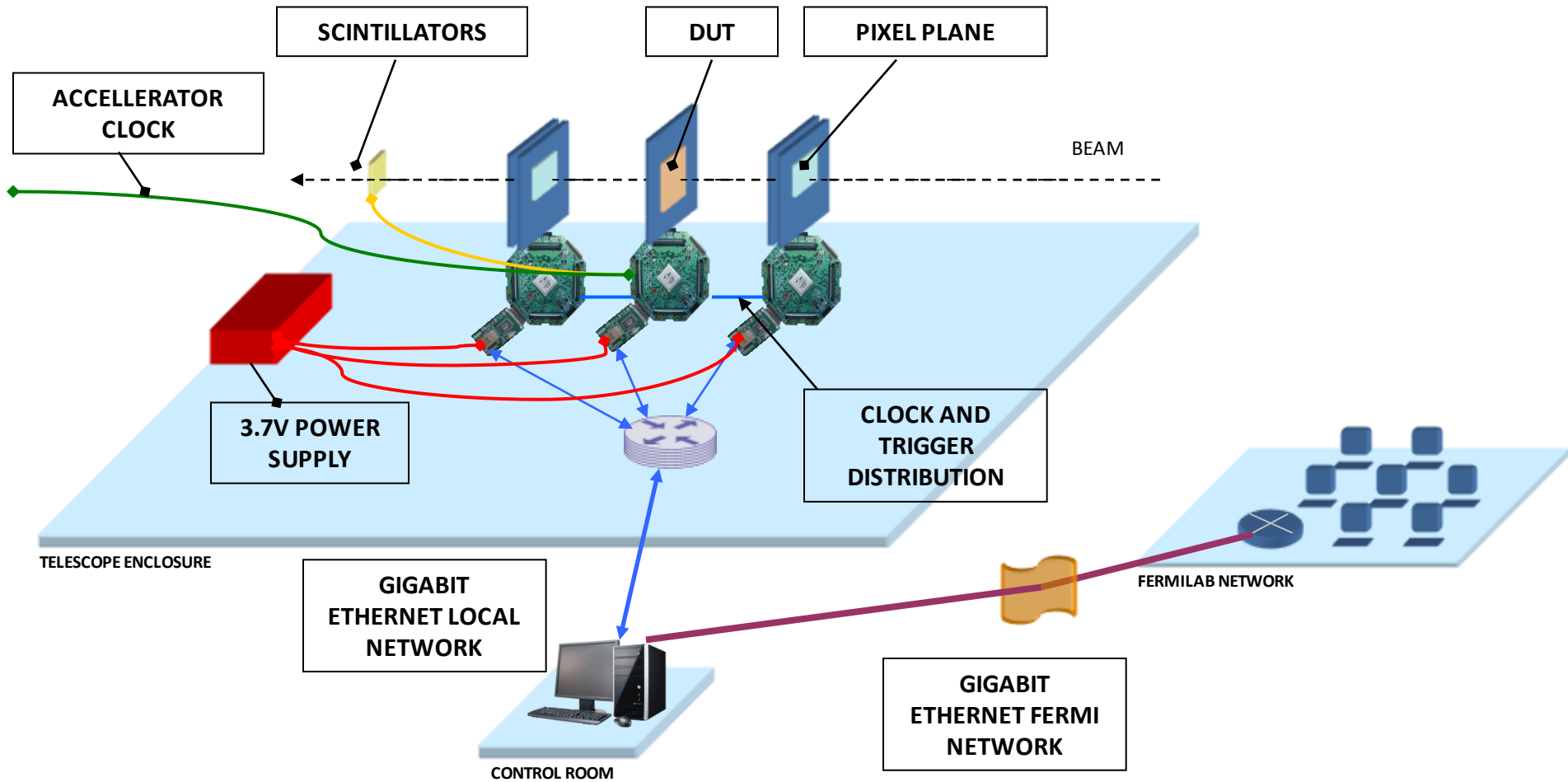


Telescope Overview



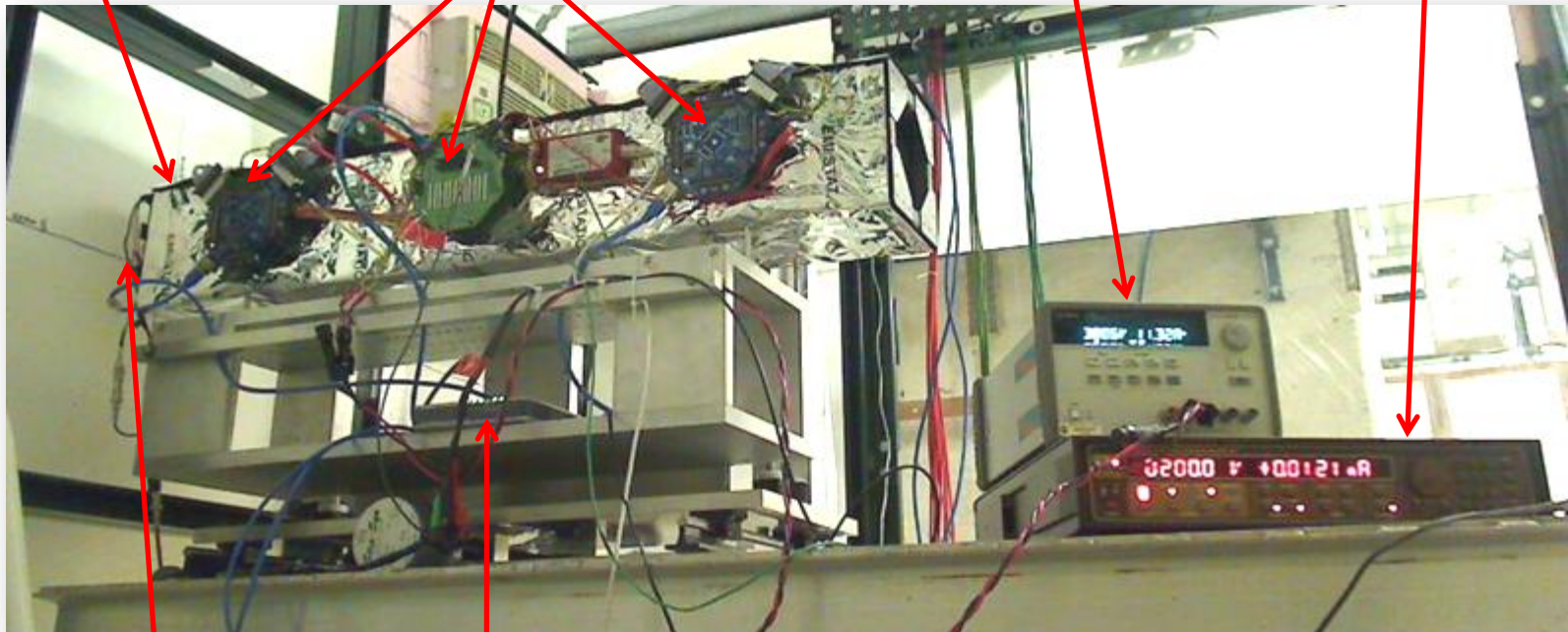
Telescope Overview Cont.

TELESCOPE BOX

CAPTAN STACK

POWER SUPPLY

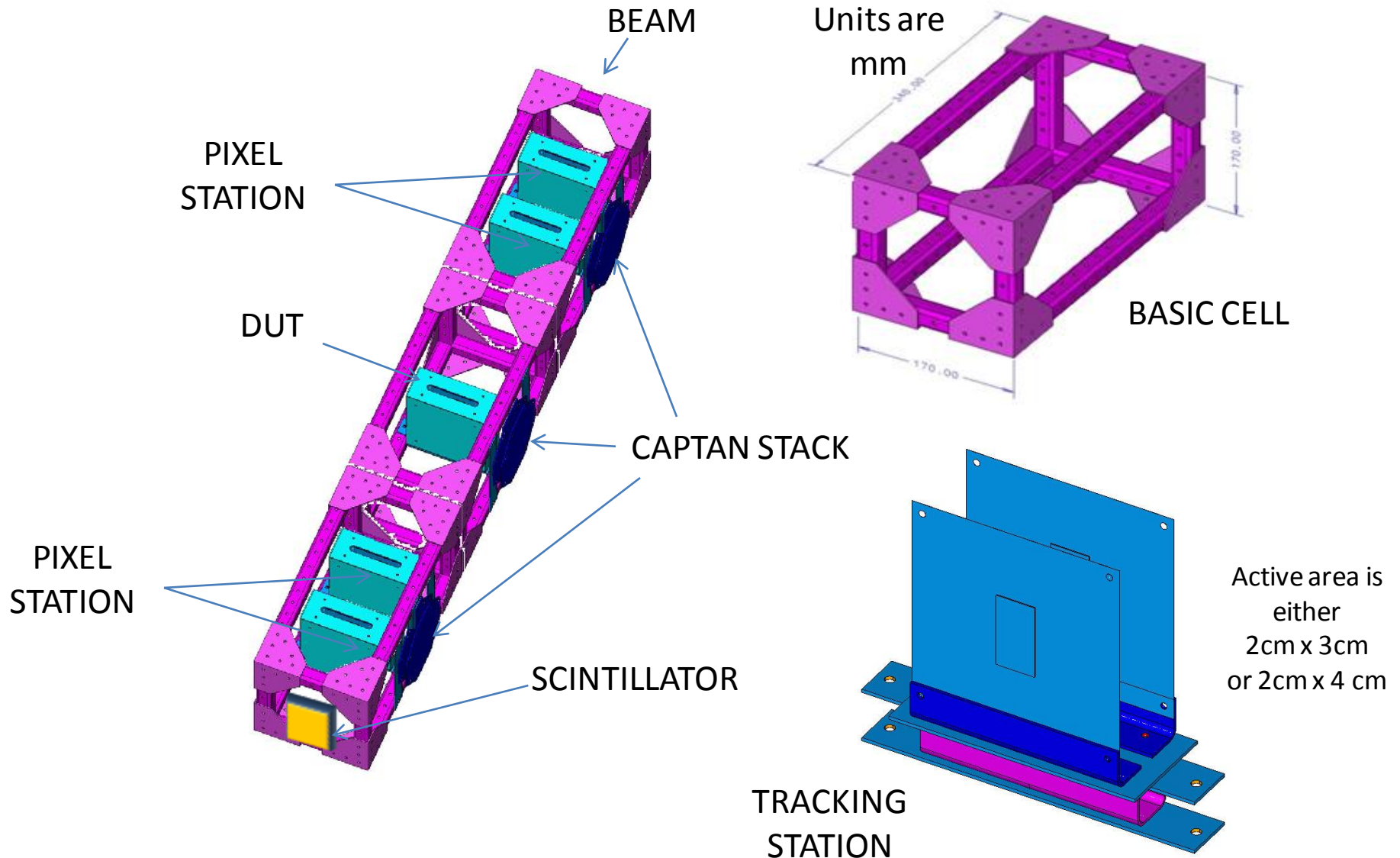
DUT SENSOR BIAS



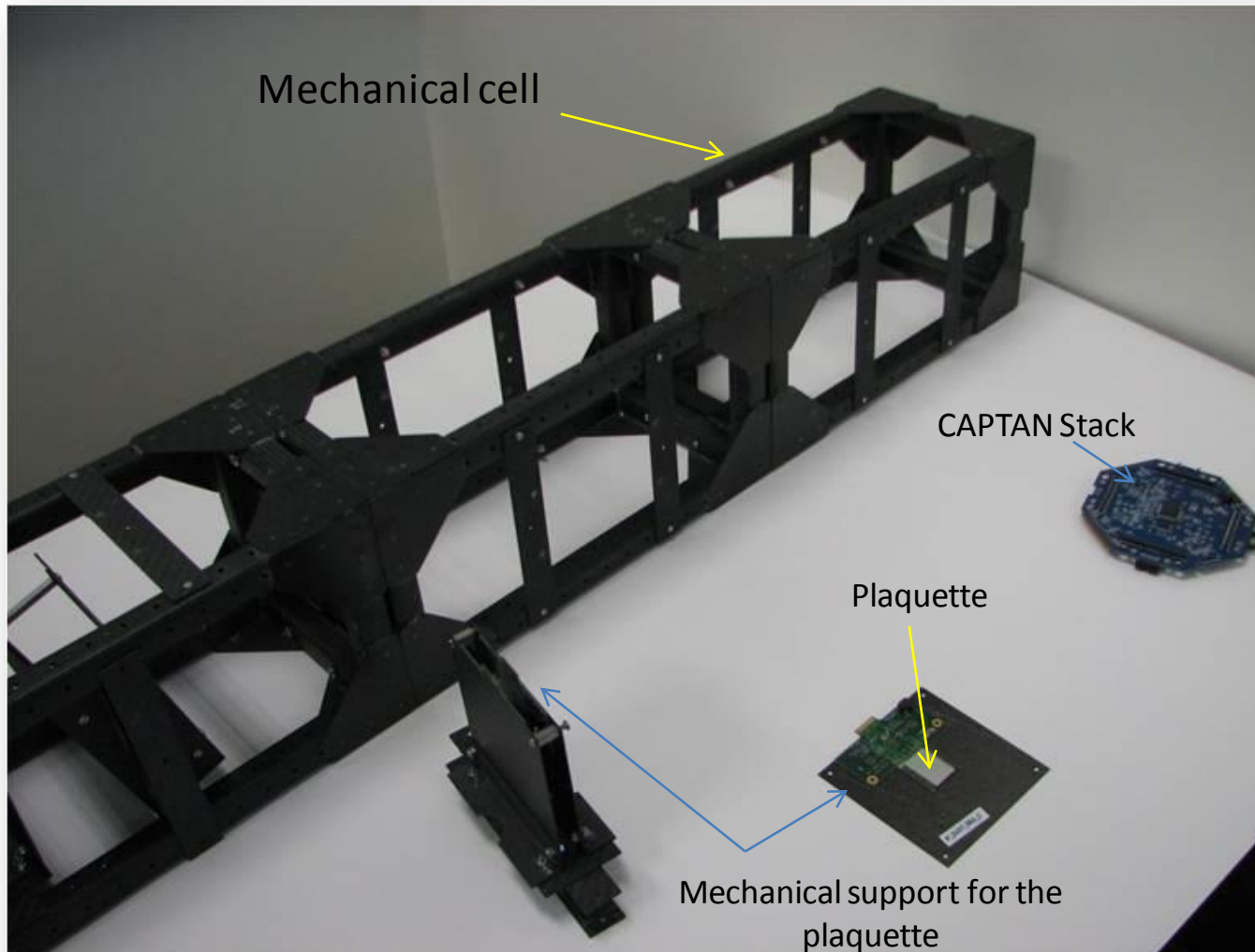
SCINTILLATOR

ROUTER

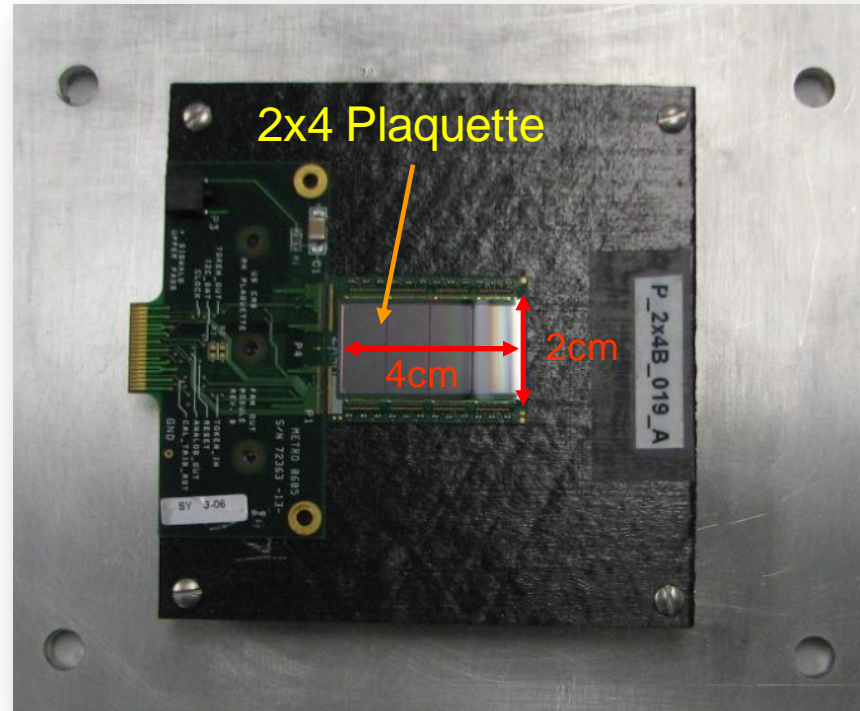
Telescope Overview Cont.



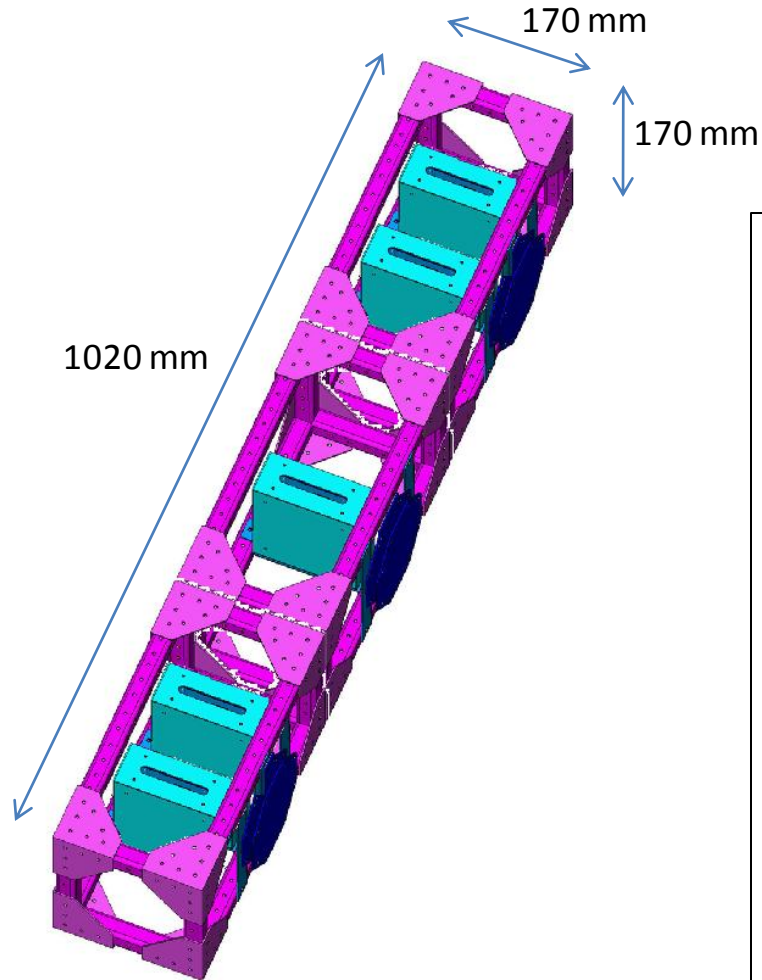
Telescope Overview Cont.



Telescope Silicon Detector



Telescope Dimensions



The telescope planes can rotate and translate within the carbon fiber frame.

The typical plane configuration is 2x4 sensors for the outside stations measuring well vertically, and 2x3 sensors for the inside stations measuring well horizontally.

In this typical running configuration the telescope is then comprised of 8 tracking planes (each tracking station has two sensors).