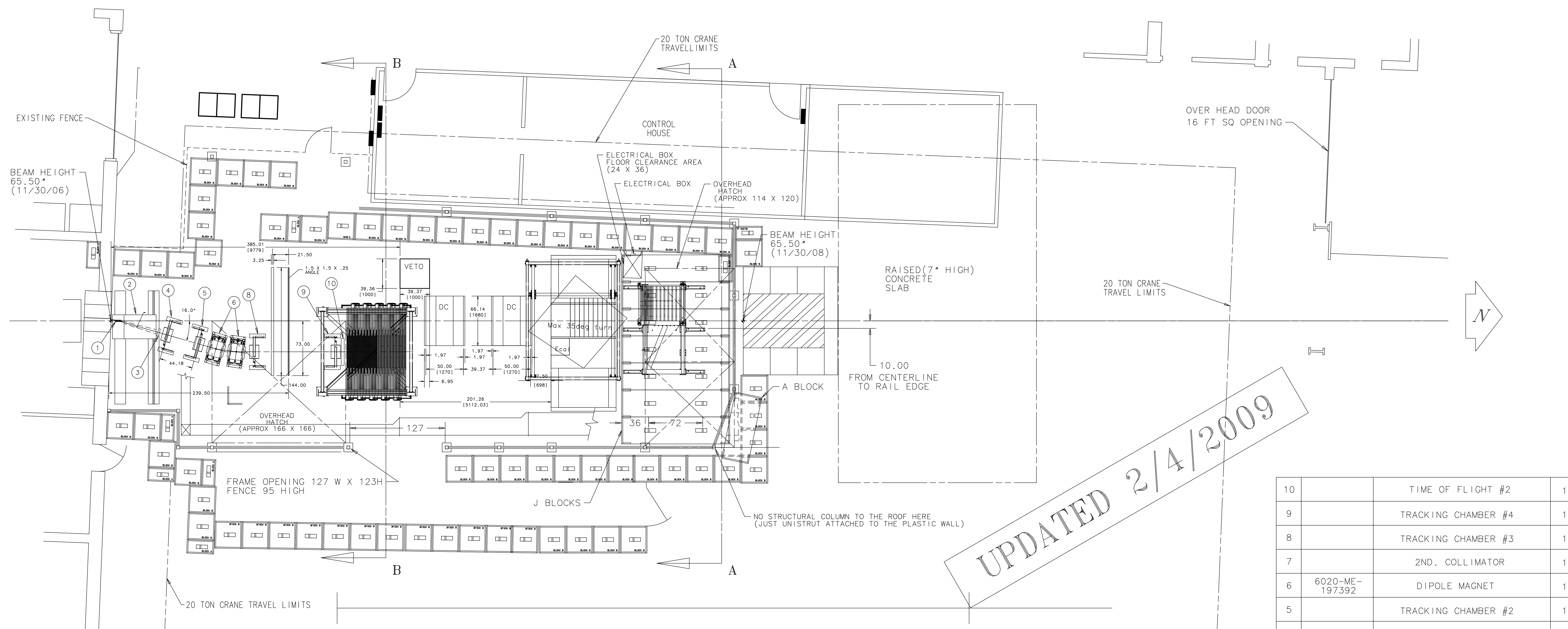
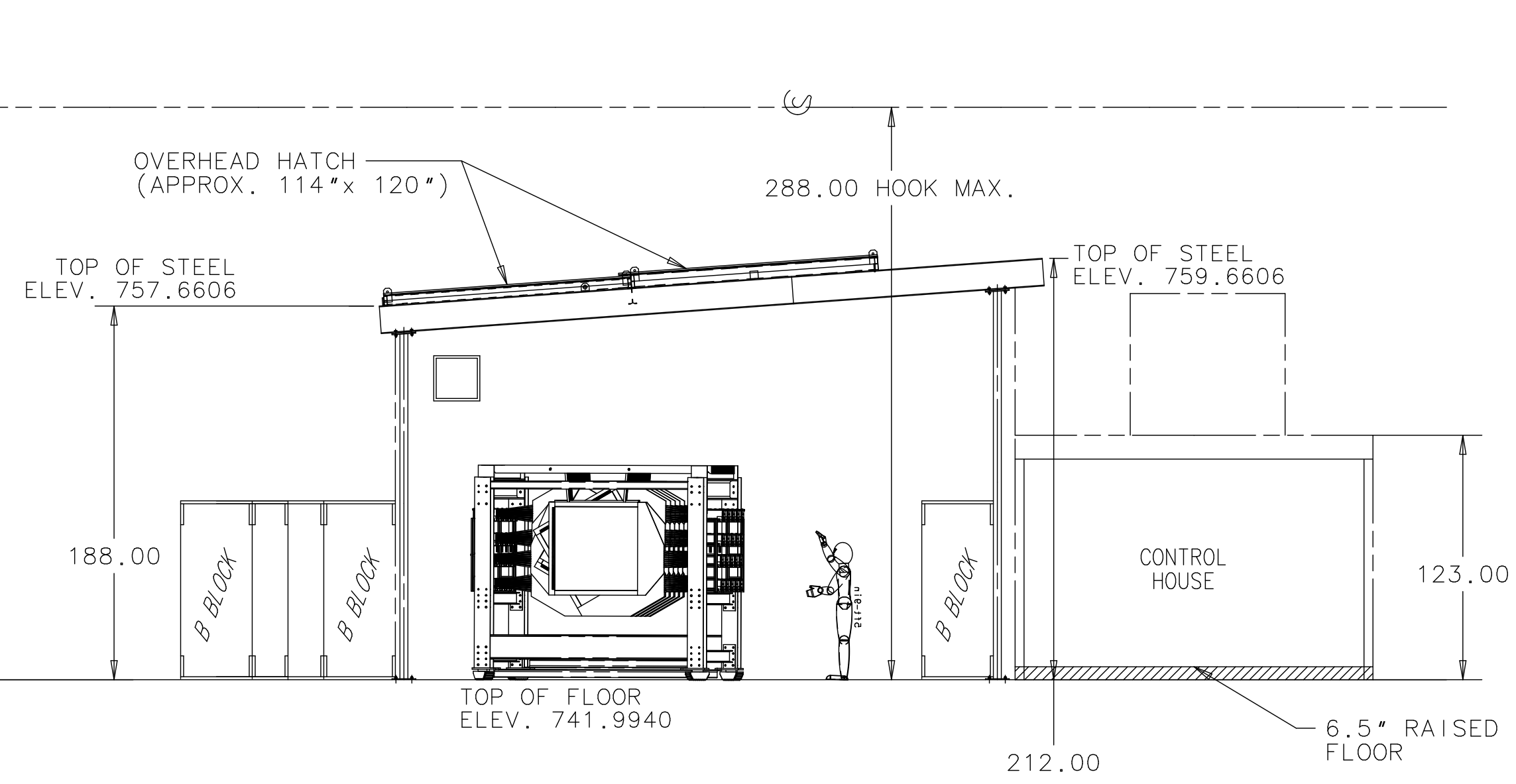


REV	DESCRIPTION	DRAWN	DATE
		APPROVED	DATE

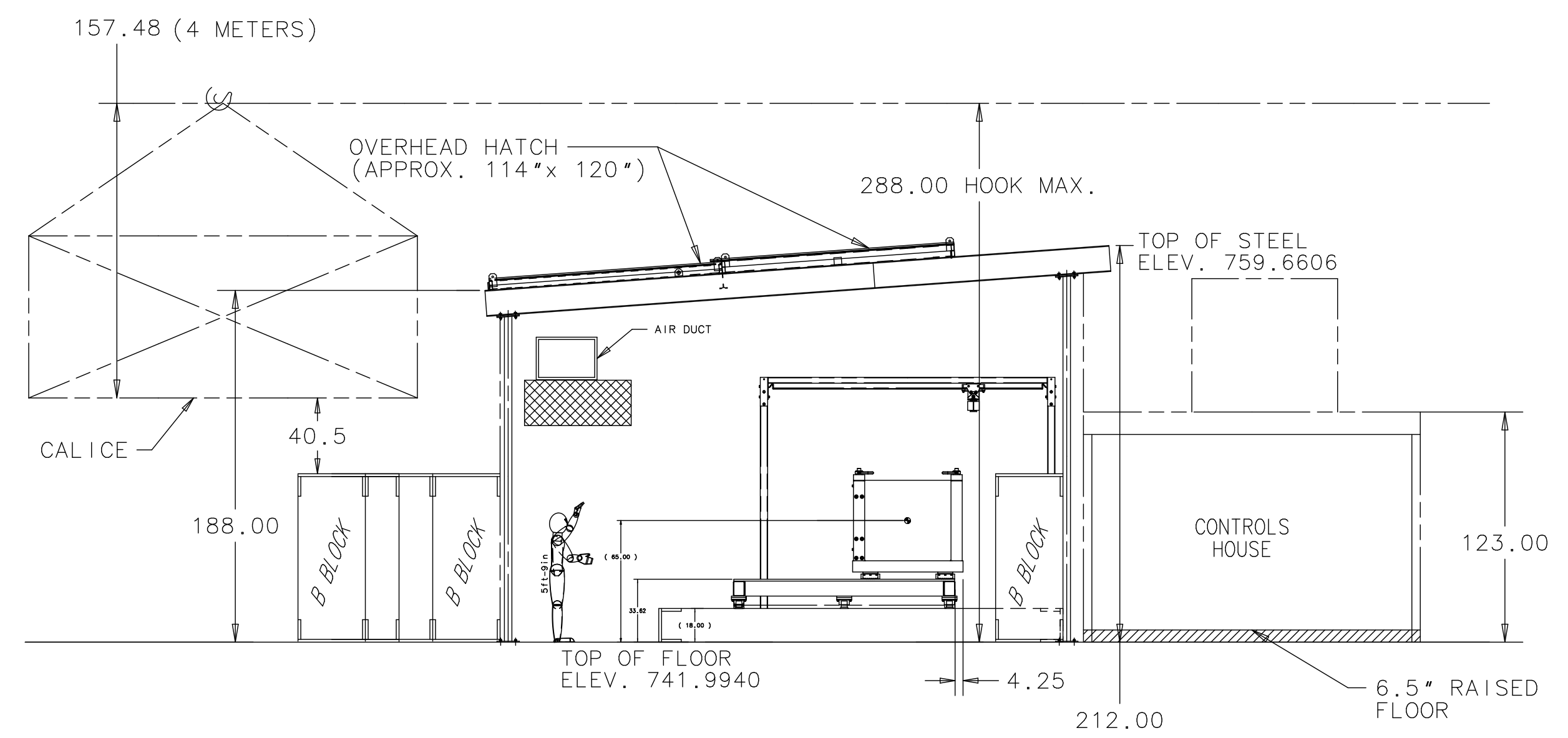


UPDATED 2/4/2009

10		TIME OF FLIGHT #2	1
9		TRACKING CHAMBER #4	1
8		TRACKING CHAMBER #3	1
7		2ND. COLLIMATOR	1
6	6020-ME-197392	DIPOLE MAGNET	1
5		TRACKING CHAMBER #2	1
4		TRACKING CHAMBER #1	1
3		TIME OF FLIGHT #1	1
2		1ST. COLLIMATOR	1
1		3" TUNGSTON TARGET	1
ITEM	PART NO.	DESCRIPTION OR SIZE	QTY.



ELEVATION VIEW B-B ROTATED 90°



ELEVATION VIEW A:A ROTATED 90°

PARTS LIST			
UNLESS OTHERWISE SPECIFIED	ORIGINATOR	J. KILMER	04-OCT-2007
.XX	.XXX	ANGLE	DRAWN
± .10	± --	± --	CHECKED
APPROVED		USED ON	
MATERIAL			
5. DRAWING UNITS: U.S. INCH			

Fermi National Accelerator Laboratory
 UNITED STATES DEPARTMENT OF ENERGY

MECHANICAL/BEAMLINE EQUIPMENT
M-TEST EQUIPMENT LAYOUT
 FISCAL YEAR - 2008

SCALE	DRAWING NUMBER	SHEET	REV
1/64	9220.000-MD-444914	1 OF 1	

CREATED WITH : Ideas12NXSeries GROUP: PPD/MECHANICAL DEPARTMENT