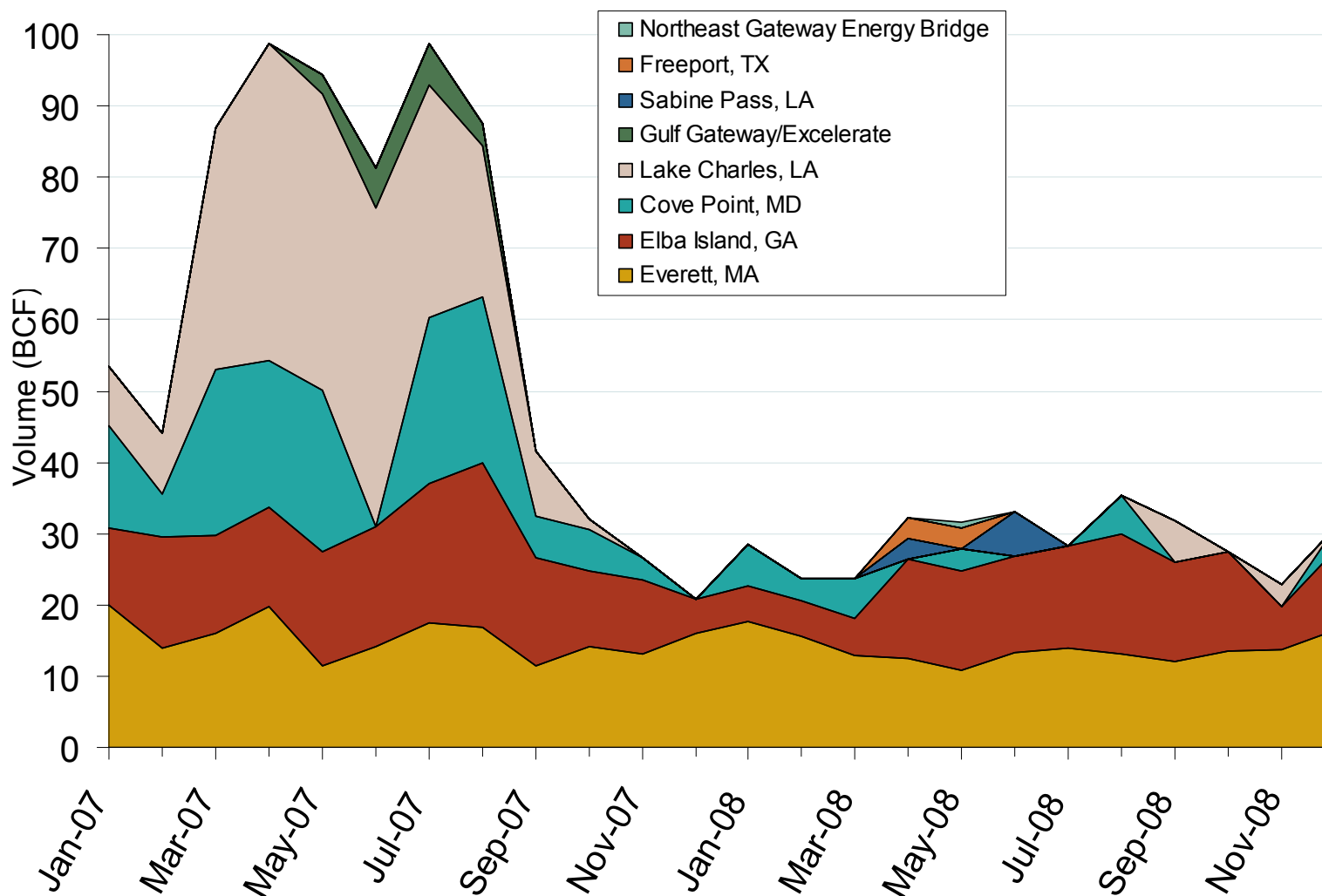


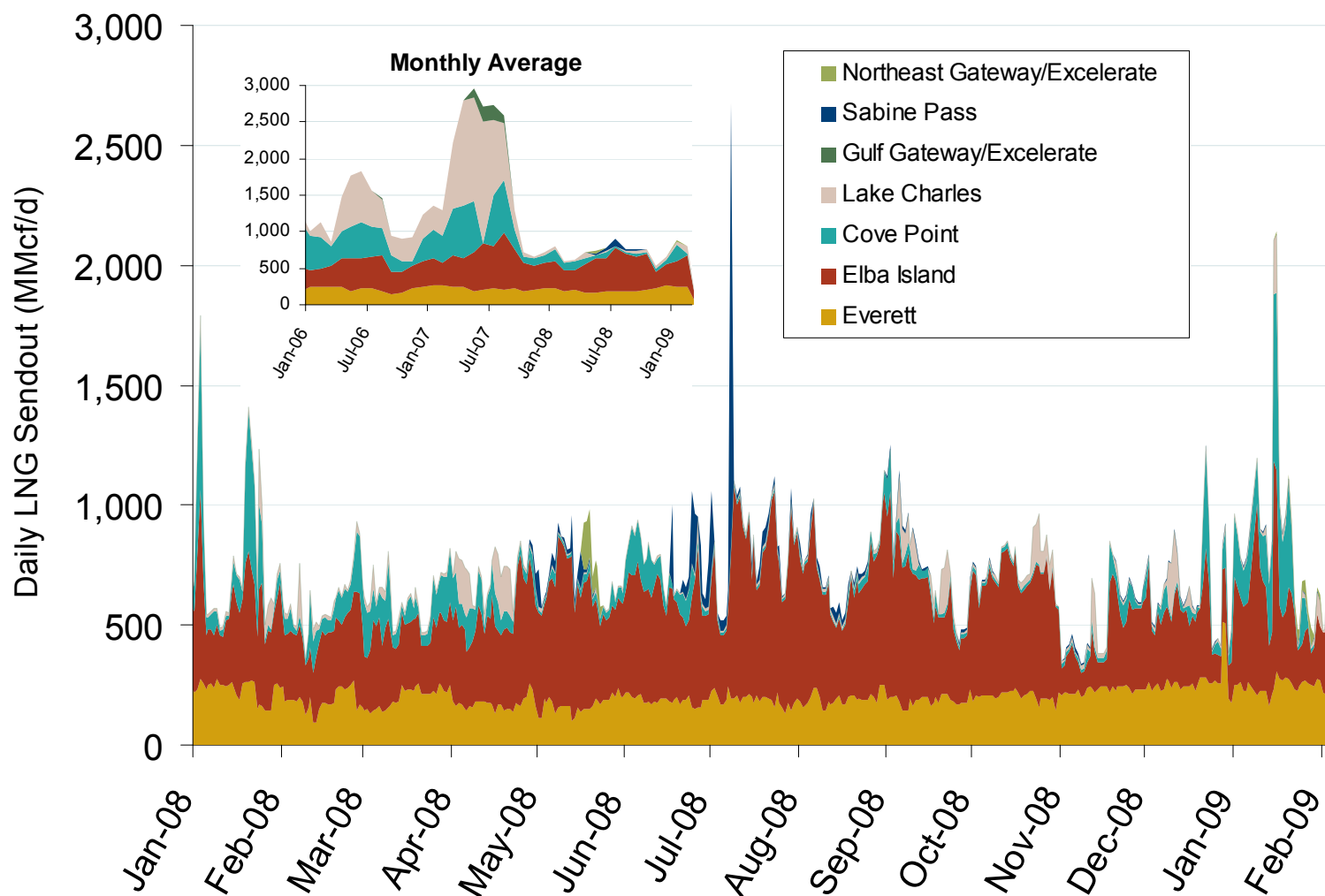
Monthly Gas Imports at Existing U.S. LNG Facilities



Source: Derived from DOE Office of Fossil Energy data.

Updated February 6, 2009

Daily Gas Sendout from Existing U.S. LNG Facilities



Source: Derived from *Bentek* data. Excludes Everett LNG delivered via truck and consumed by the Mystic plant as well as Freeport LNG which flows via intrastate pipelines.

Updated February 6, 2009

3007

World LNG Estimated February 2009 Landed Prices

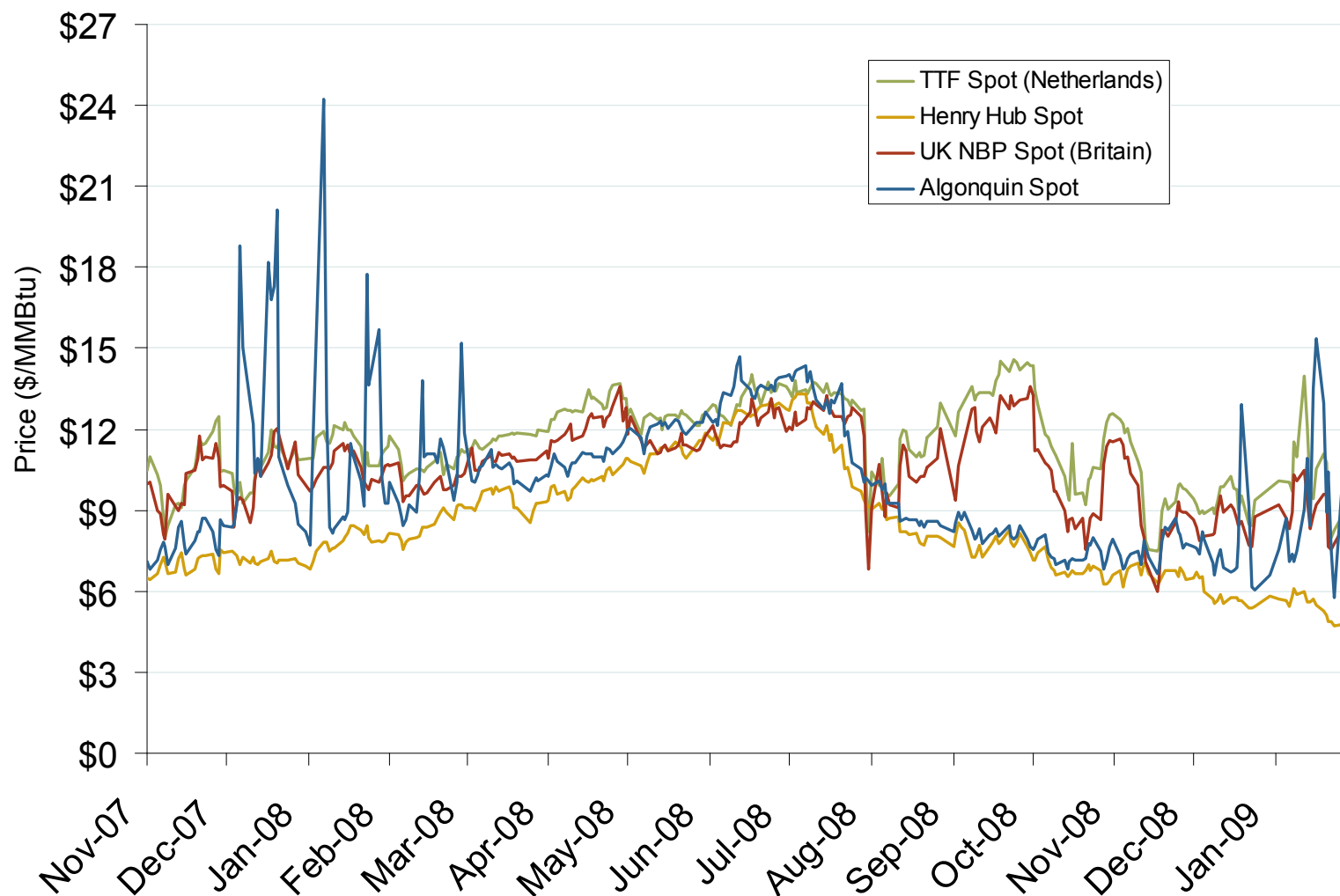


Source: *Waterborne Energy, Inc.* Data in \$US/MMBtu.

Updated February 6, 2009

3024

Atlantic Basin European and US Spot Natural Gas Prices

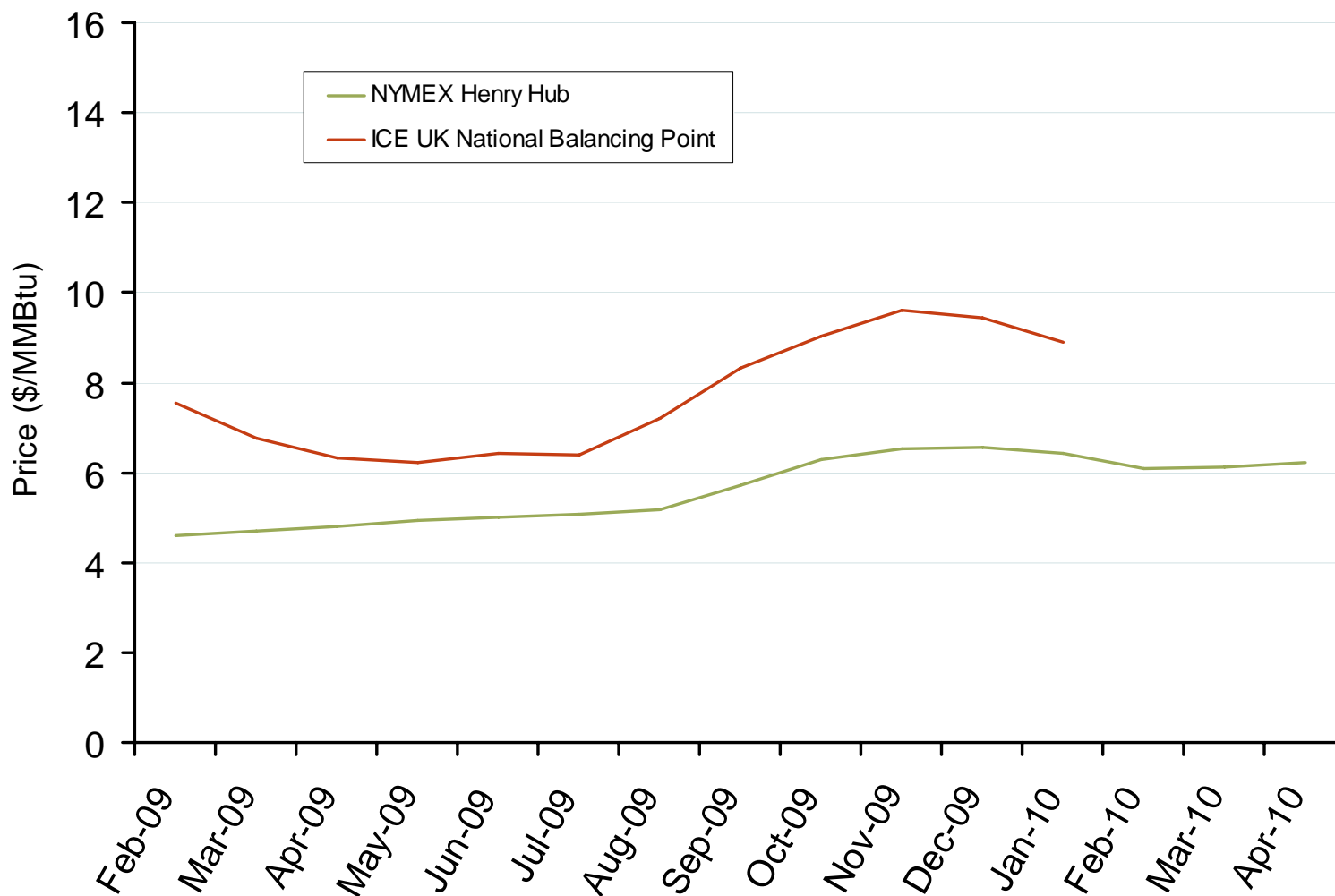


Source: Derived from *Bloomberg* and *ICE* data.

Updated February 6, 2009

3008

NYMEX Henry Hub and ICE UK National Balancing Point Natural Gas Forward Price Curves



Source: Derived from NYMEX and ICE data.

Updated February 6, 2009

3016