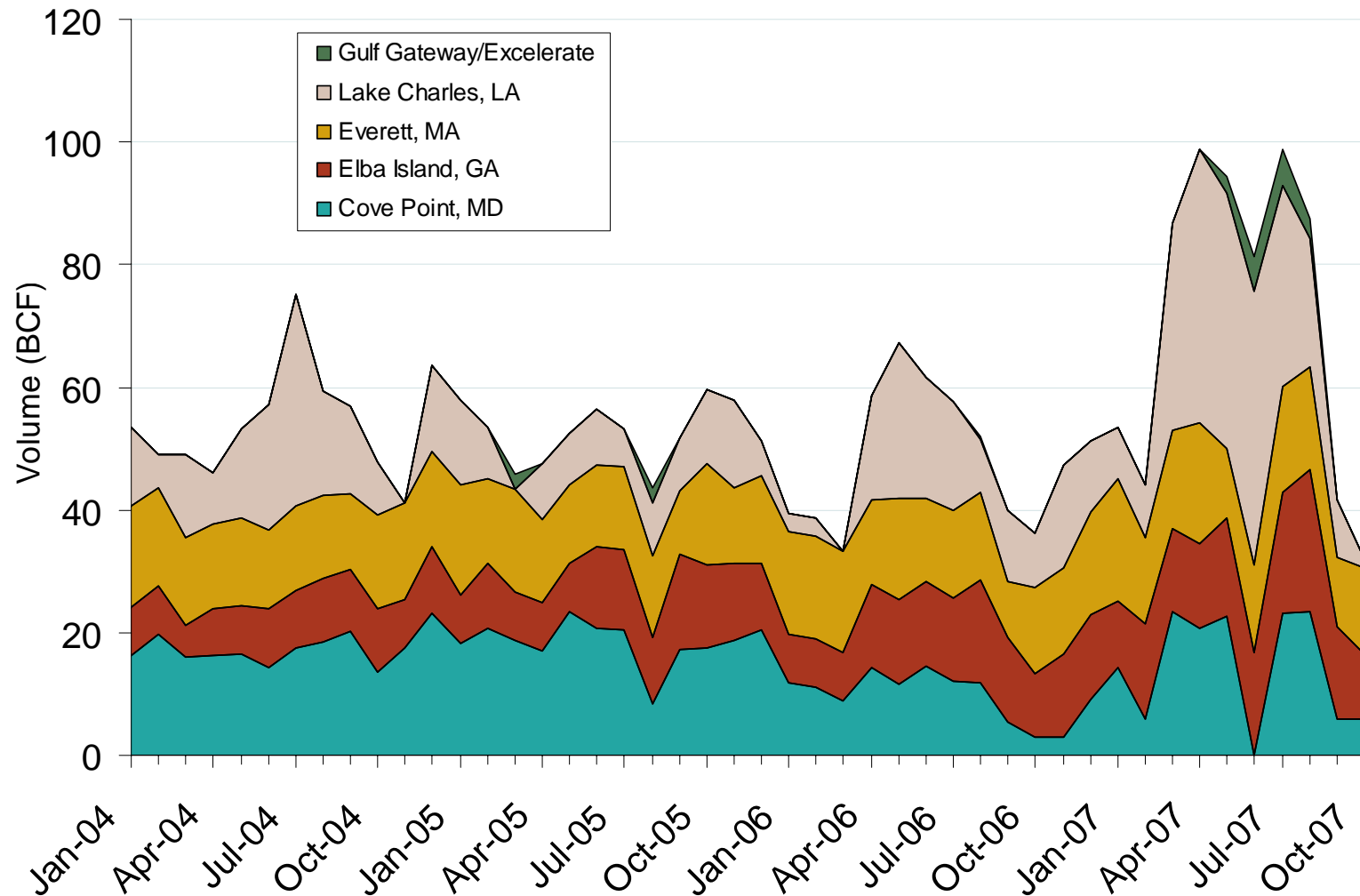


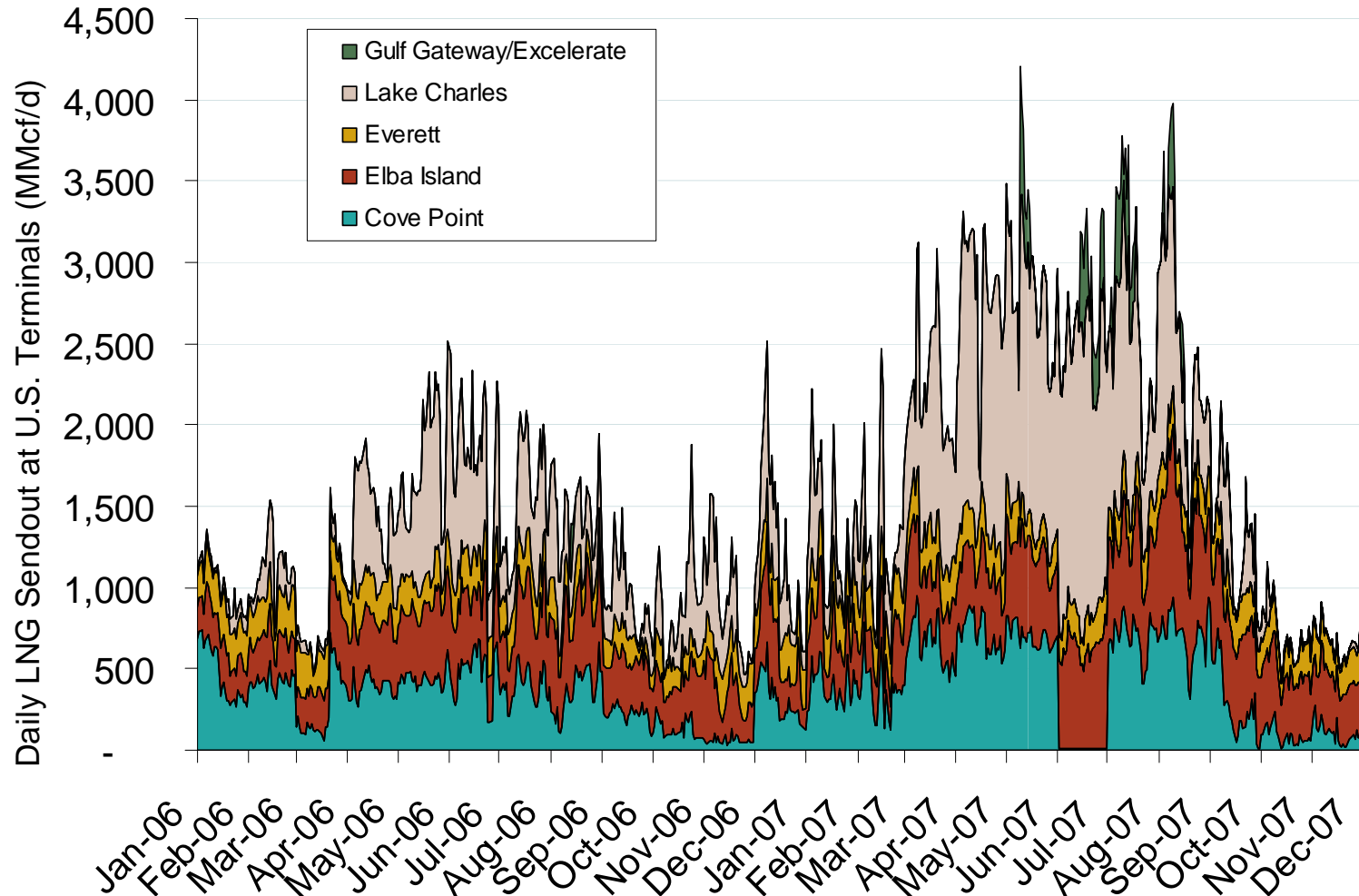
Monthly Gas Imports at Existing U.S. LNG Facilities



Source: Derived from EIA data.

Updated December 7, 2007

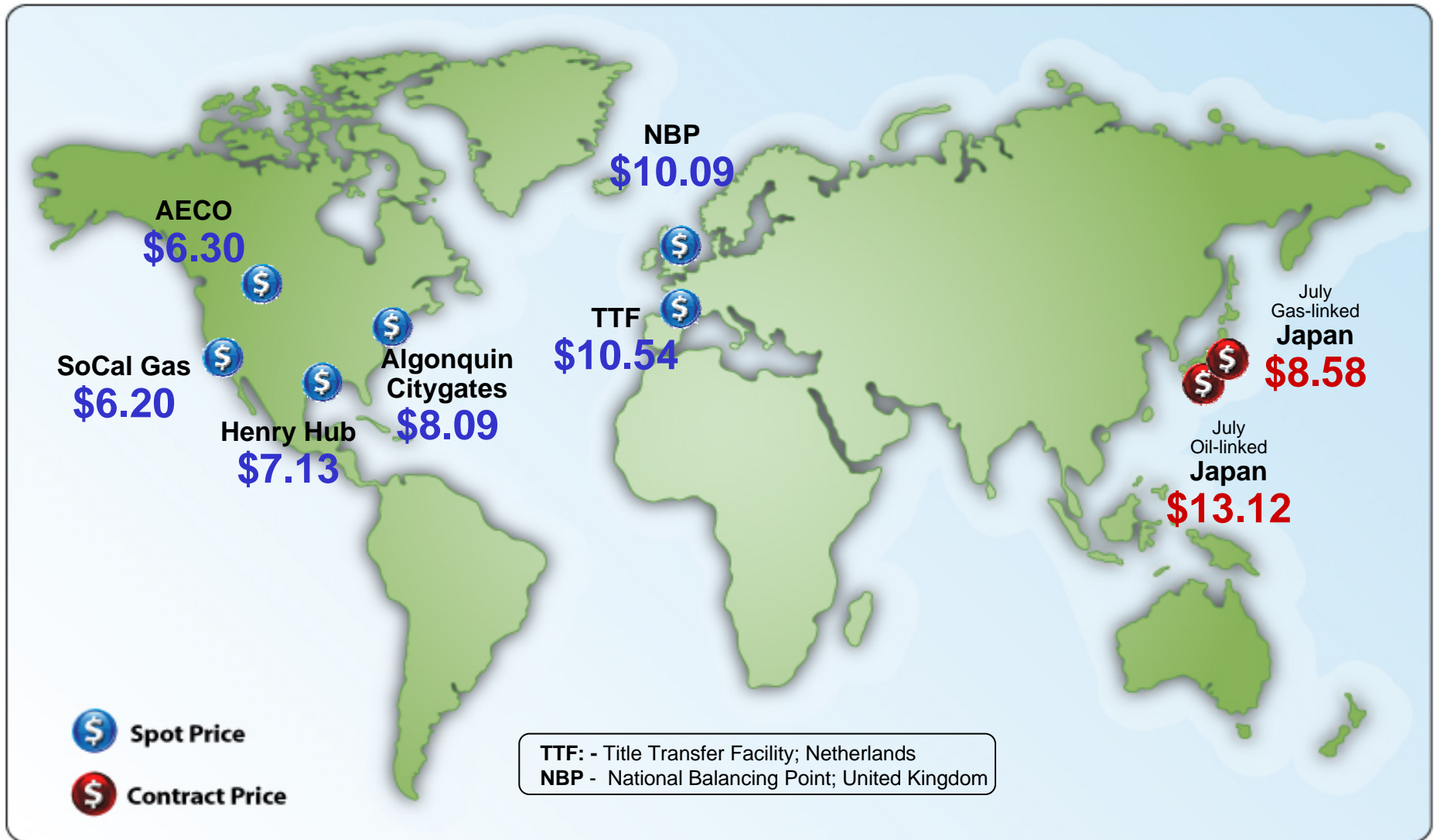
Daily Gas Sendout from Existing U.S. LNG Facilities



Source: Derived from *Bentek* data. Excludes Everett LNG delivered via truck and consumed by the Mystic plant.

Updated December 7, 2007

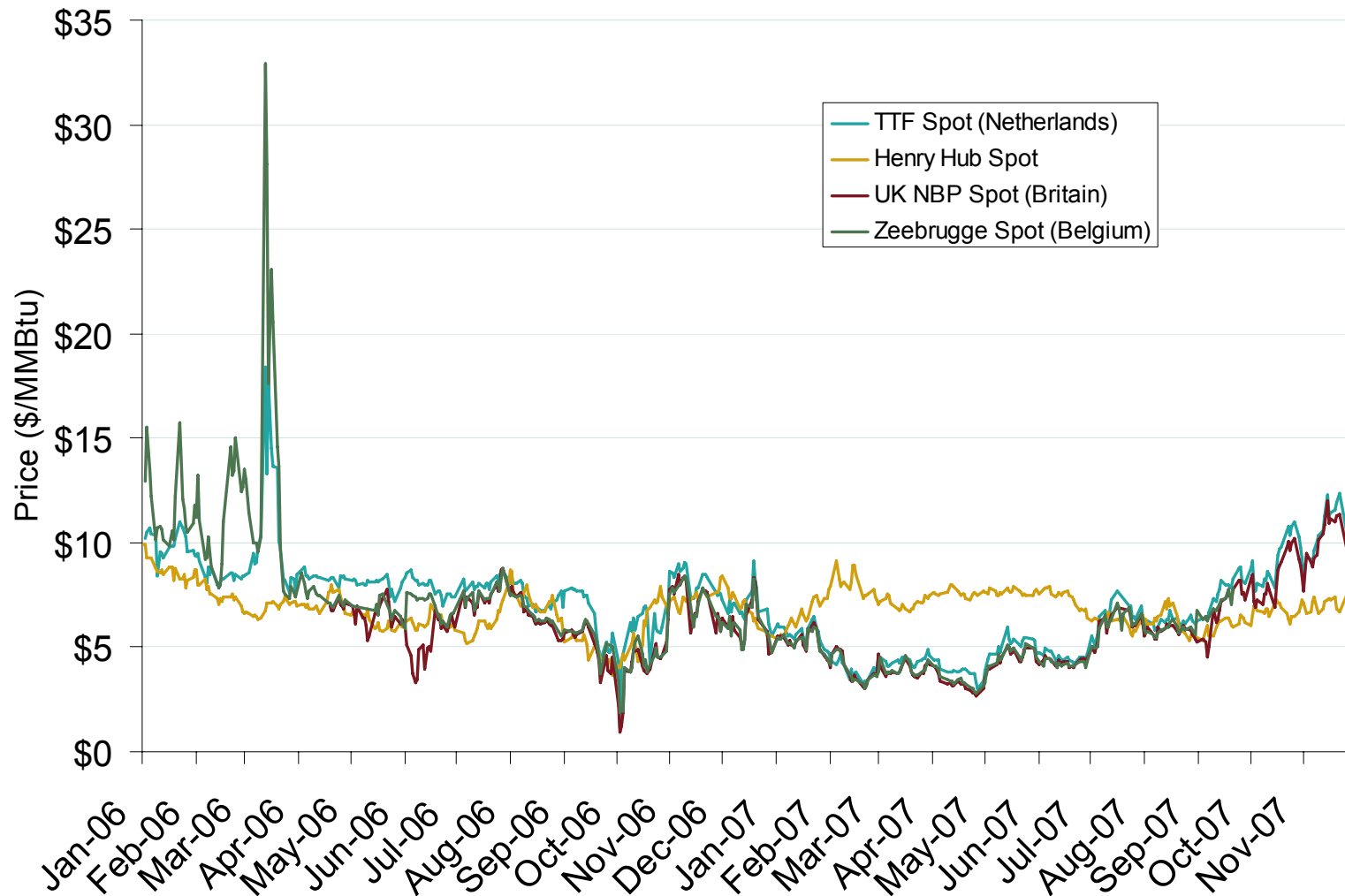
World Natural Gas Prices for December 2007



Source: Derived from *Bloomberg, ICE, ICAP and LNG Japan Corp.* data. Spot Price is a monthly average of daily prices. Contract Price is a monthly price. All prices in \$US/MMBtu.

Updated December 7, 2007

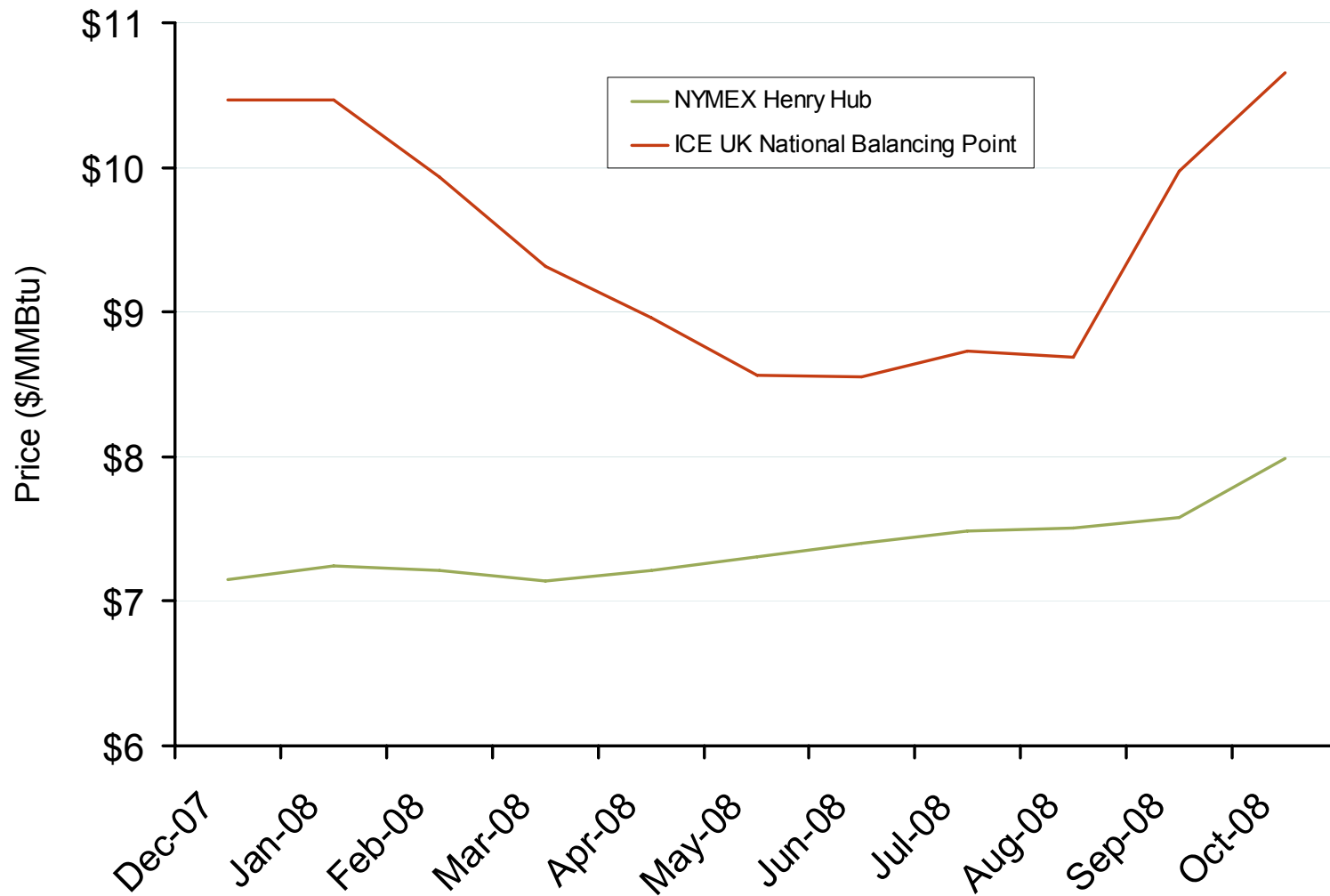
European and U.S. Spot Natural Gas Prices



Source: Derived from Bloomberg and ICE data.

Updated December 7, 2007

NYMEX Henry Hub and ICE UK National Balancing Point Natural Gas Forward Price Curves



Source: Derived from NYMEX and ICE data.

Updated December 5, 2007

3016