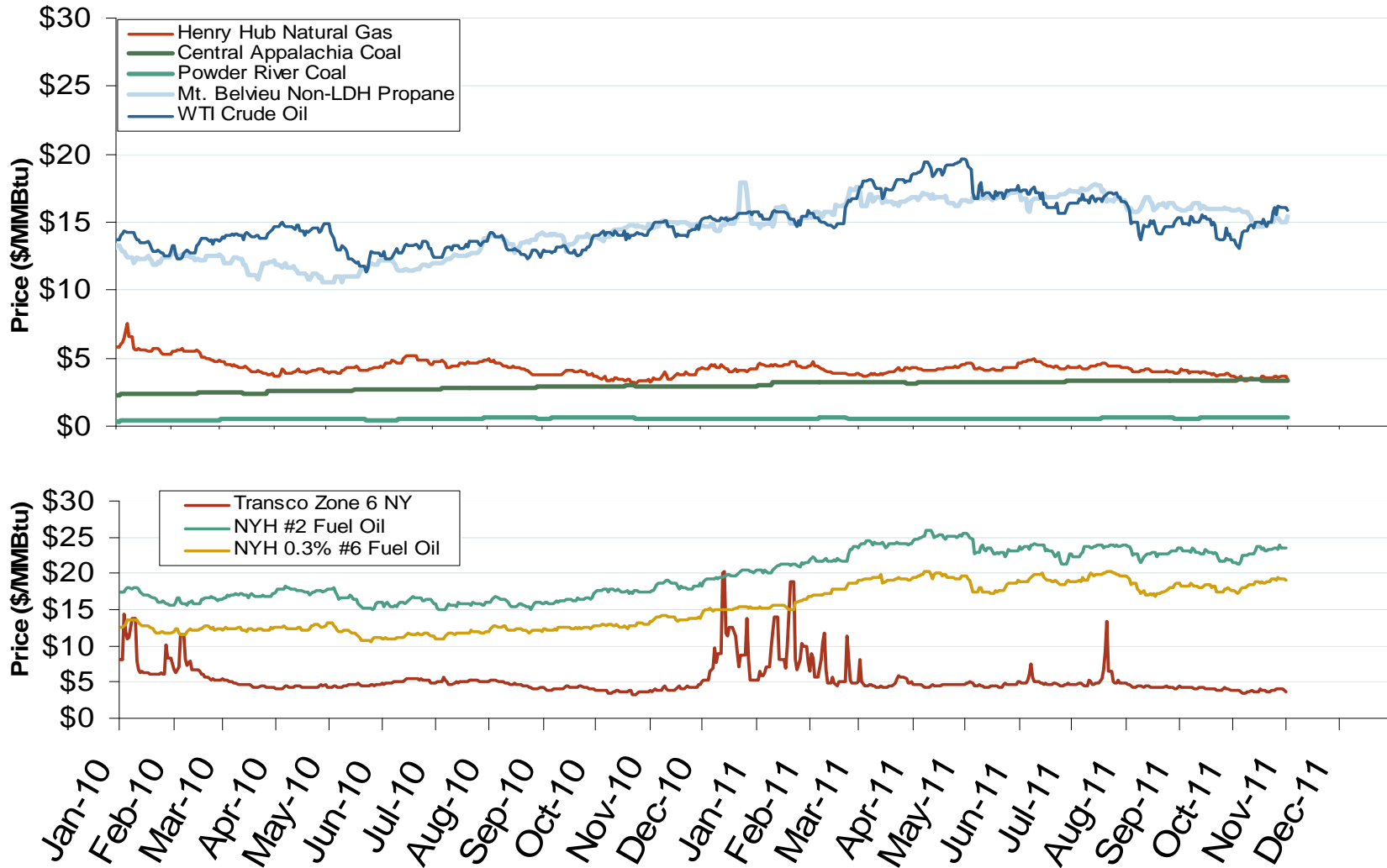


Other Fuels Market: Fossil Fuel Prices

Federal Energy Regulatory Commission • Market Oversight • www.ferc.gov/oversight

Oil, Coal, Natural Gas and Propane Daily Spot Prices

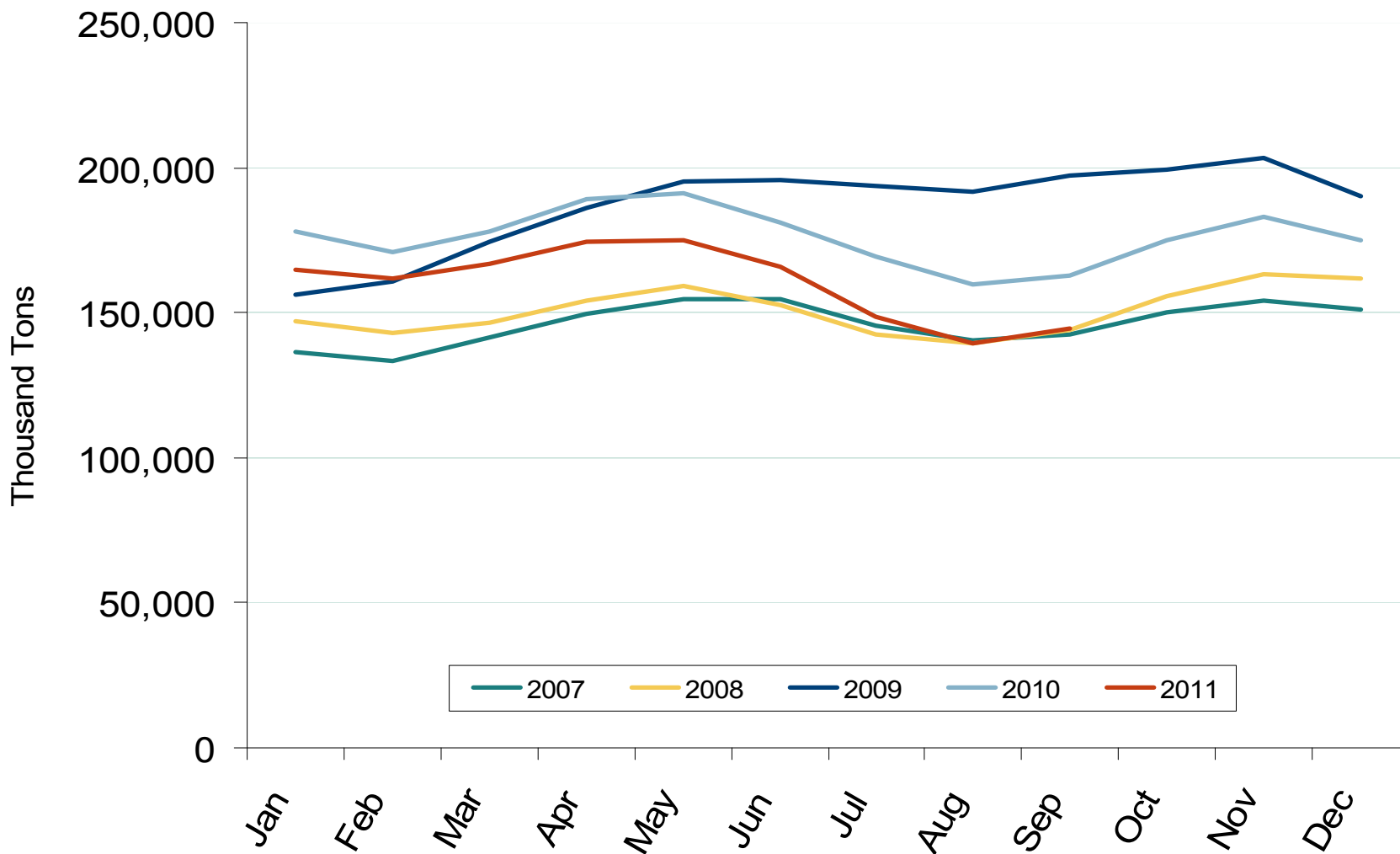


Notes: Coal prices are quoted in \$/ton. Conversion factors to \$/MMBtu are based on contract specifications of 12,000 btus/pound for Central Appalachian coal and 8800 btus/pound for Powder River Basin coal

Source: Derived from ICE and Bloomberg data

Updated: January 04, 2012

U.S. Coal Stockpiles at Electric Power Generating Facilities



Source: Derived from EIA data. Excludes Industrial and Commercial Plants
 January 2012

Updated: January 04, 2012

Oil, Natural Gas and Currency Spot Prices

