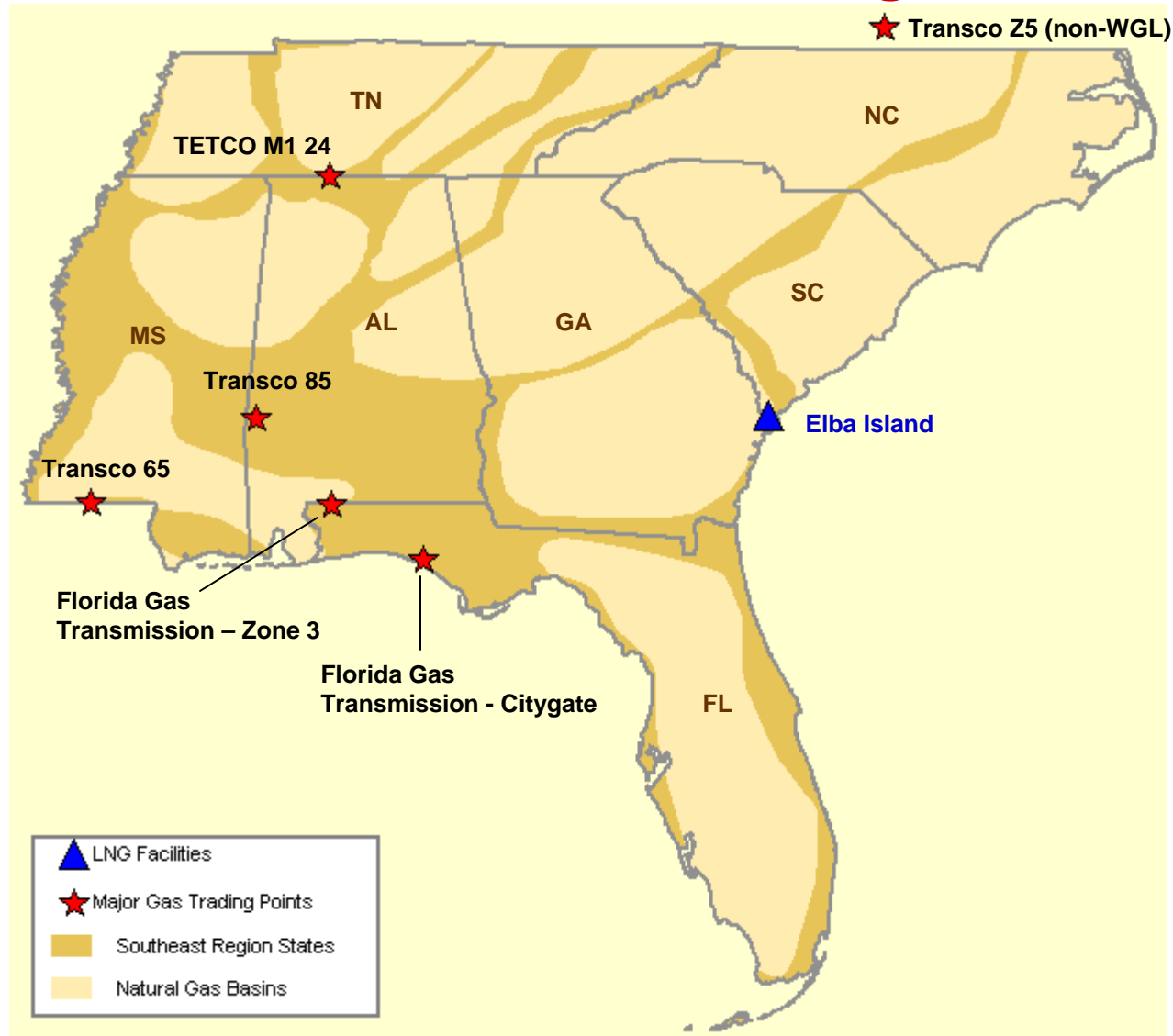


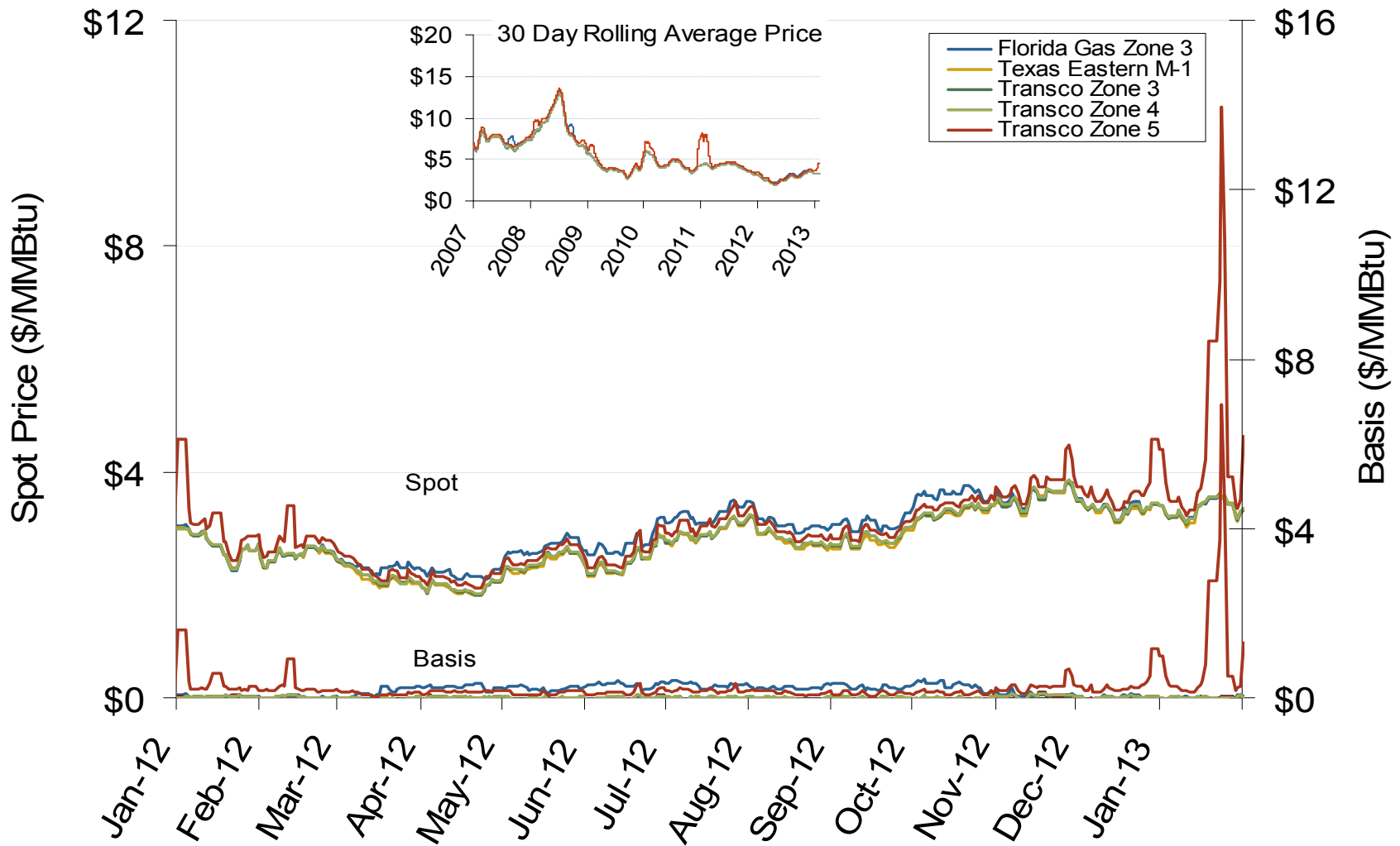
Southeast Natural Gas Region



Southeast Annual Average Spot Hub Prices

Annual Average Day Ahead Prices (\$/MMBtu)						
	2008	2009	2010	2011	2012	5-Year Avg
Henry Hub	\$8.85	\$3.92	\$4.37	\$3.99	\$2.75	\$4.78
Florida Gas Zone 3	\$9.13	\$3.98	\$4.42	\$4.05	\$2.93	\$4.90
Transco Station 65	\$8.92	\$3.96	\$4.38	\$3.98	\$2.74	\$4.80
Transco Zone 4	\$8.98	\$3.98	\$4.39	\$4.00	\$2.76	\$4.82
Transco Zone 5	\$9.46	\$4.33	\$5.04	\$4.52	\$2.94	\$5.26
Tetco M1	\$8.98	\$3.98	\$4.40	\$3.98	\$2.73	\$4.81

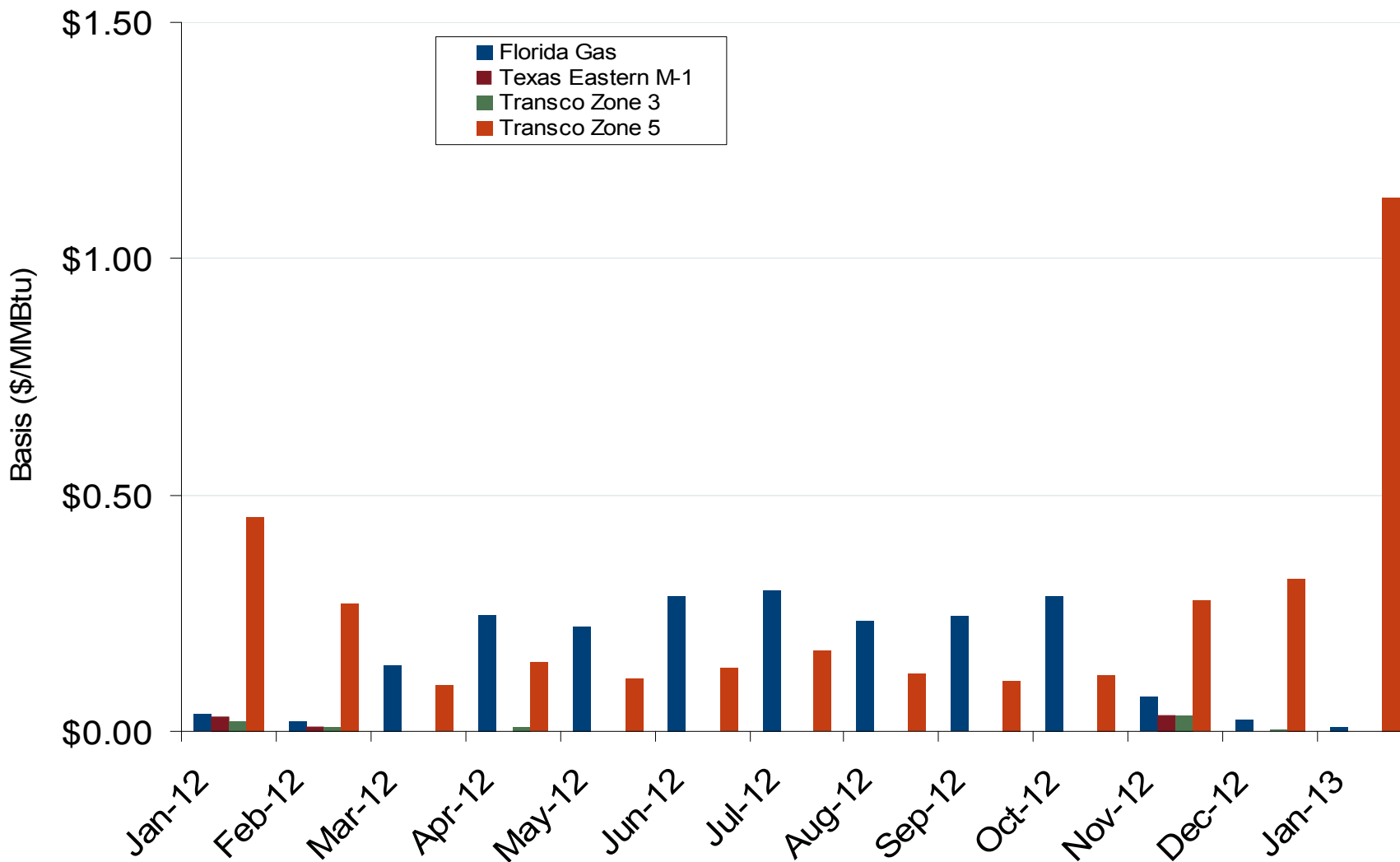
Southeastern Day-Ahead Hub Spot Prices and Basis



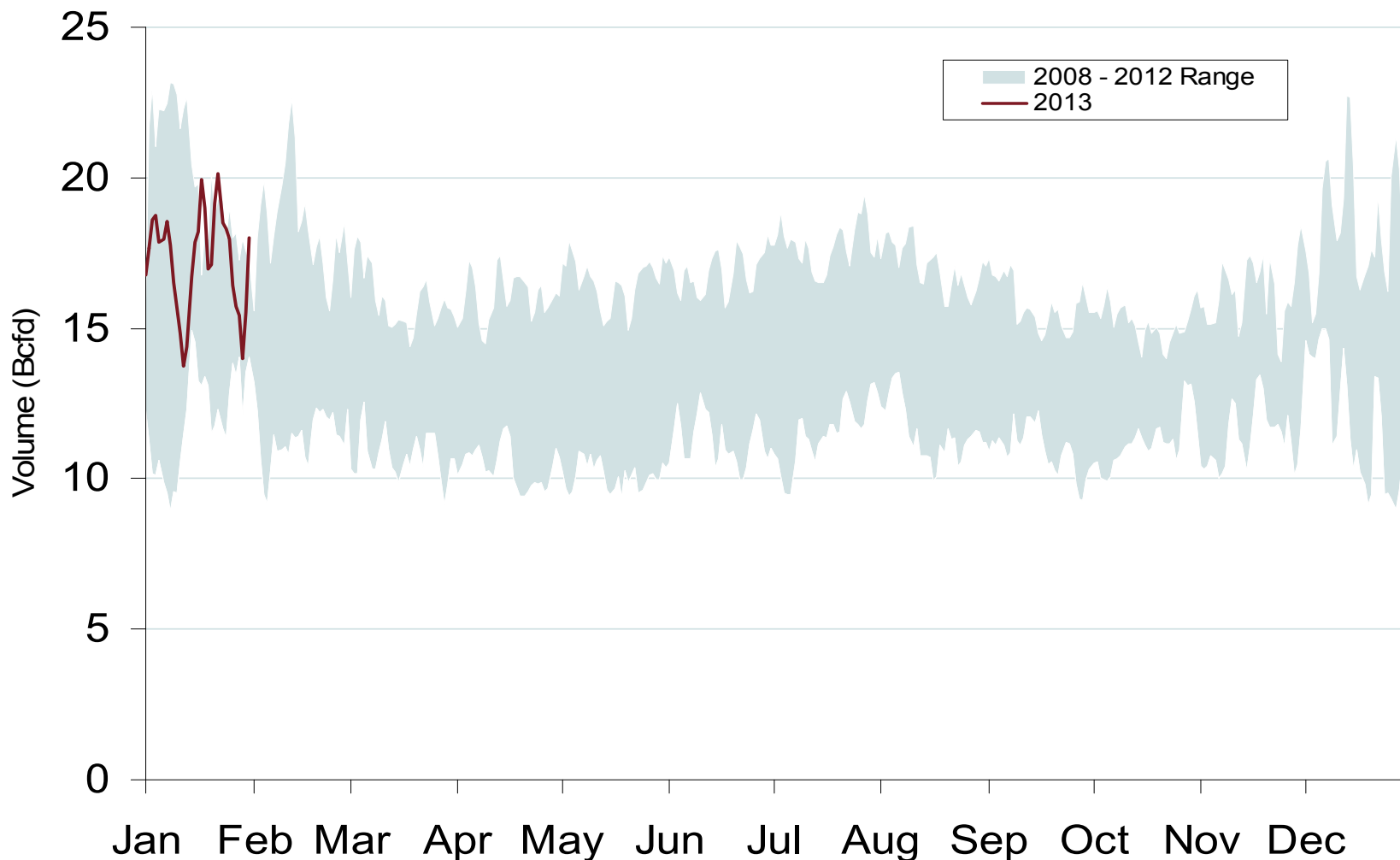
Southeast Natural Gas Market: Average Basis to Henry Hub

Federal Energy Regulatory Commission • Market Oversight • www.ferc.gov/oversight

Southeastern Monthly Average Basis Value to Henry Hub



Daily Southeast Natural Gas Demand All Sectors



Southeast Natural Gas Consumption for Power Generation

