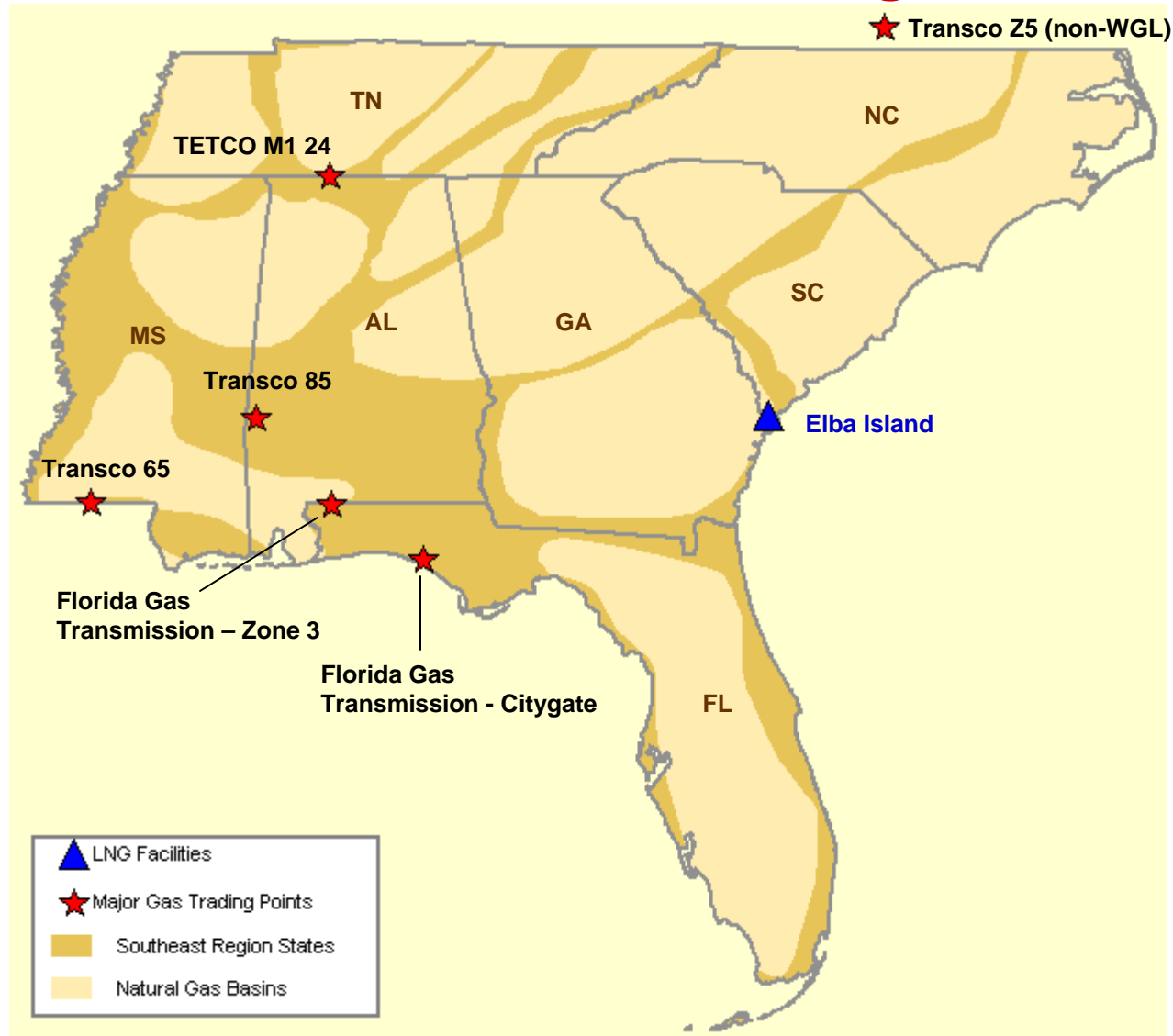


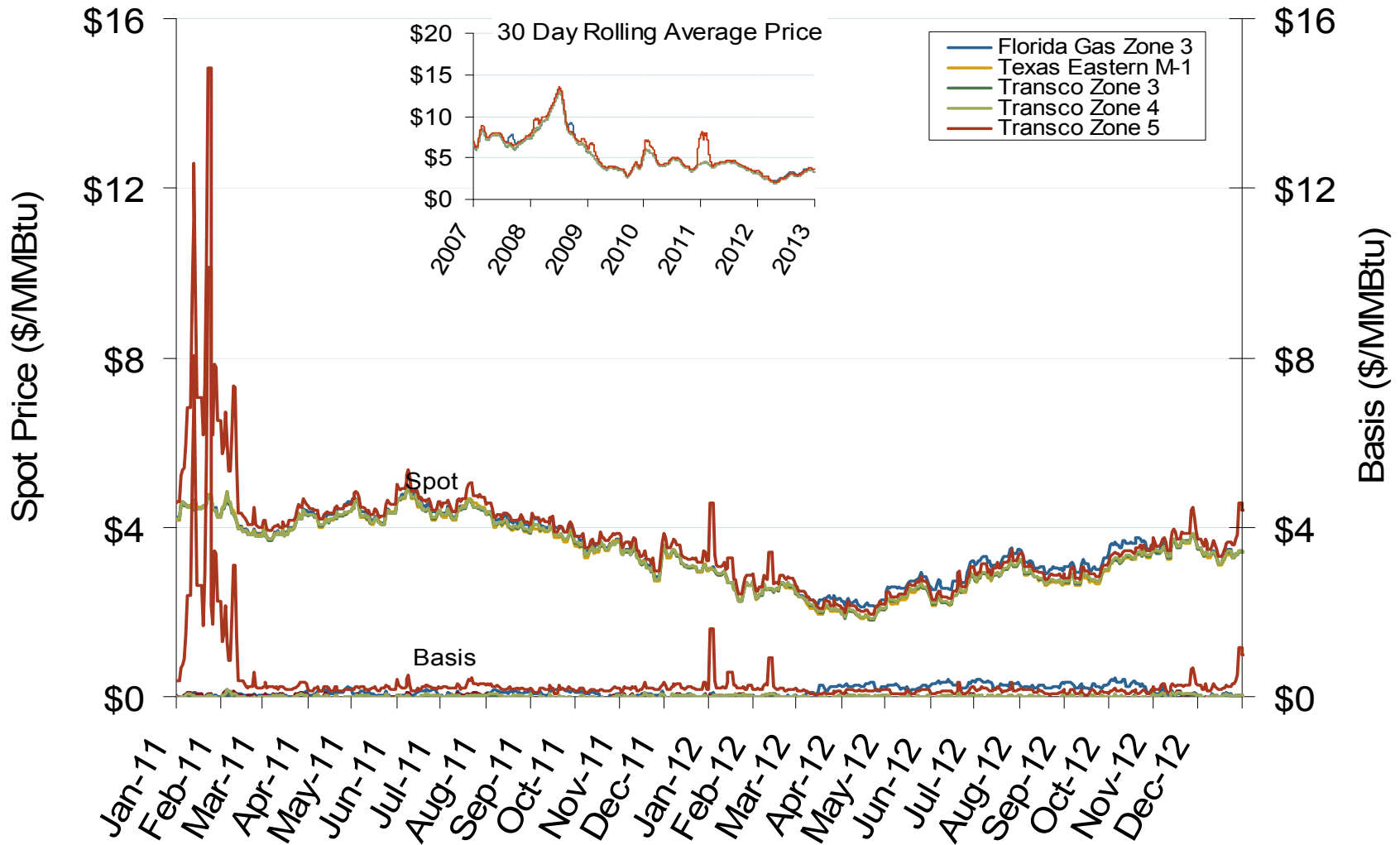
Southeast Natural Gas Region



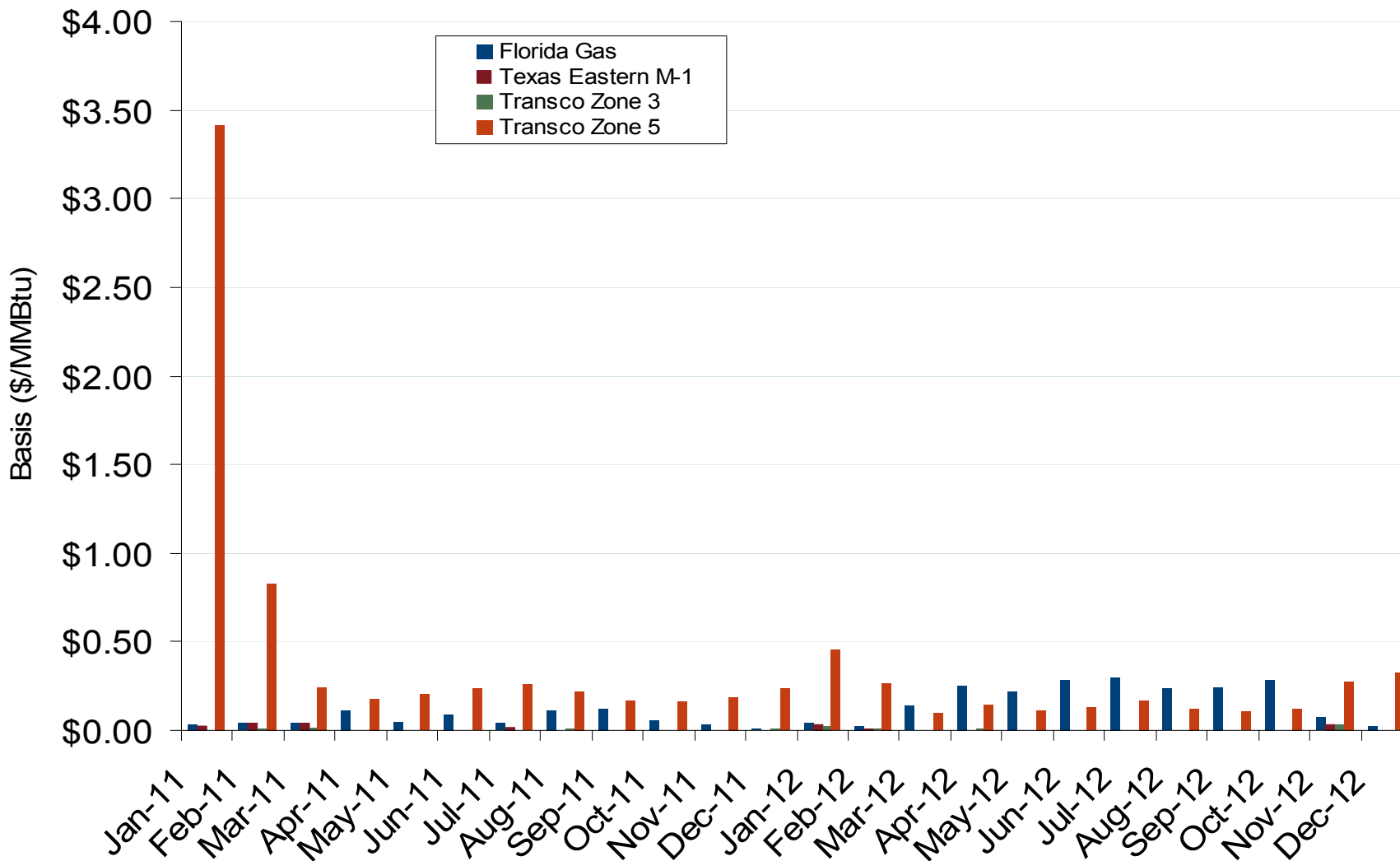
Southeast Annual Average Spot Hub Prices

| Annual Average Day Ahead Prices (\$/MMBtu) | | | | | | |
|--|--------|--------|--------|--------|--------|------------|
| | 2008 | 2009 | 2010 | 2011 | 2012 | 5-Year Avg |
| Henry Hub | \$8.85 | \$3.92 | \$4.37 | \$3.99 | \$2.75 | \$4.78 |
| Florida Gas Zone 3 | \$9.13 | \$3.98 | \$4.42 | \$4.05 | \$2.93 | \$4.90 |
| Transco Station 65 | \$8.92 | \$3.96 | \$4.38 | \$3.98 | \$2.74 | \$4.80 |
| Transco Zone 4 | \$8.98 | \$3.98 | \$4.39 | \$4.00 | \$2.76 | \$4.82 |
| Transco Zone 5 | \$9.46 | \$4.33 | \$5.04 | \$4.52 | \$2.94 | \$5.26 |
| Tetco M1 | \$8.98 | \$3.98 | \$4.40 | \$3.98 | \$2.73 | \$4.81 |

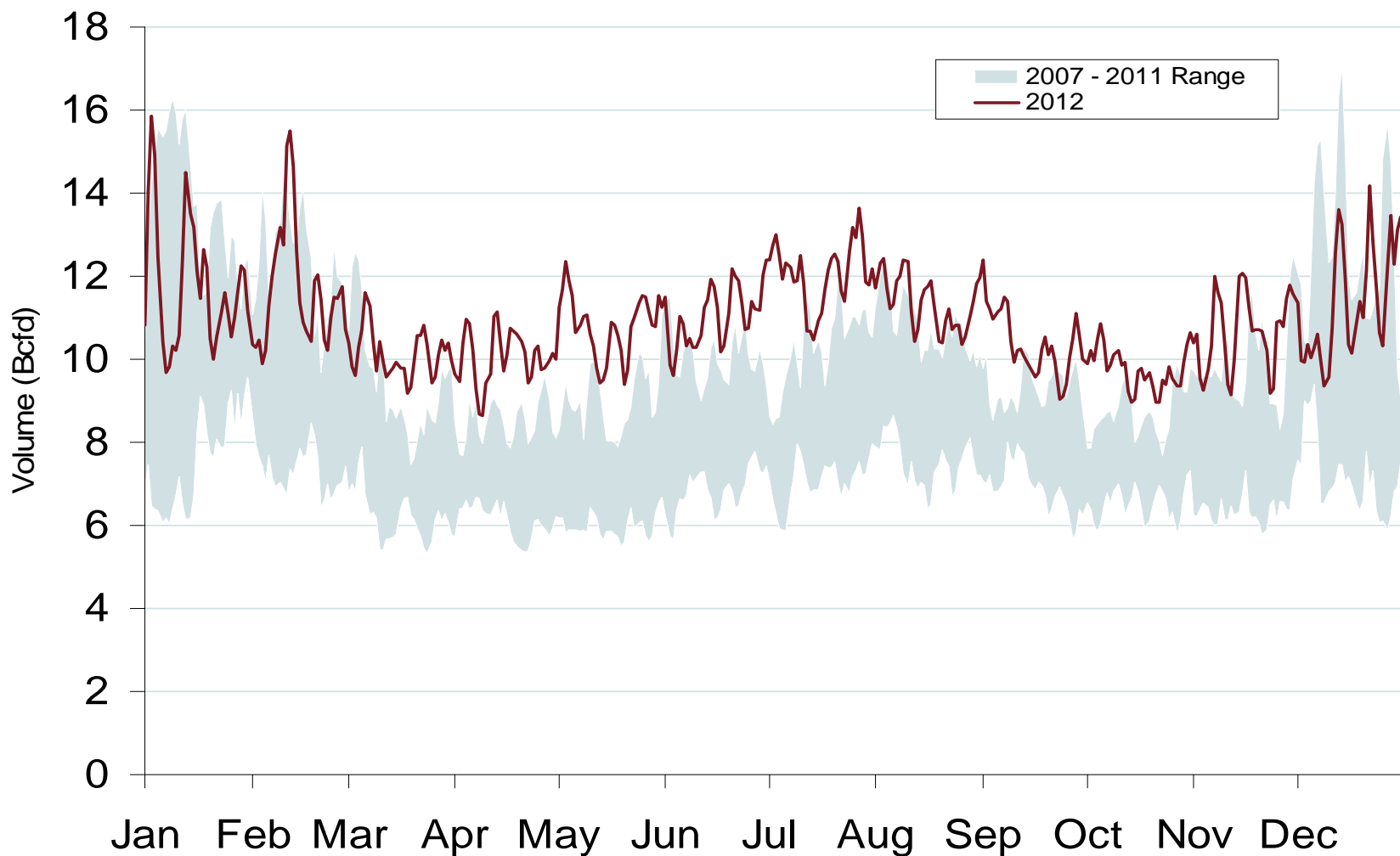
Southeastern Day-Ahead Hub Spot Prices and Basis



Southeastern Monthly Average Basis Value to Henry Hub



Daily Southeast Natural Gas Demand All Sectors



Southeast Natural Gas Consumption for Power Generation

