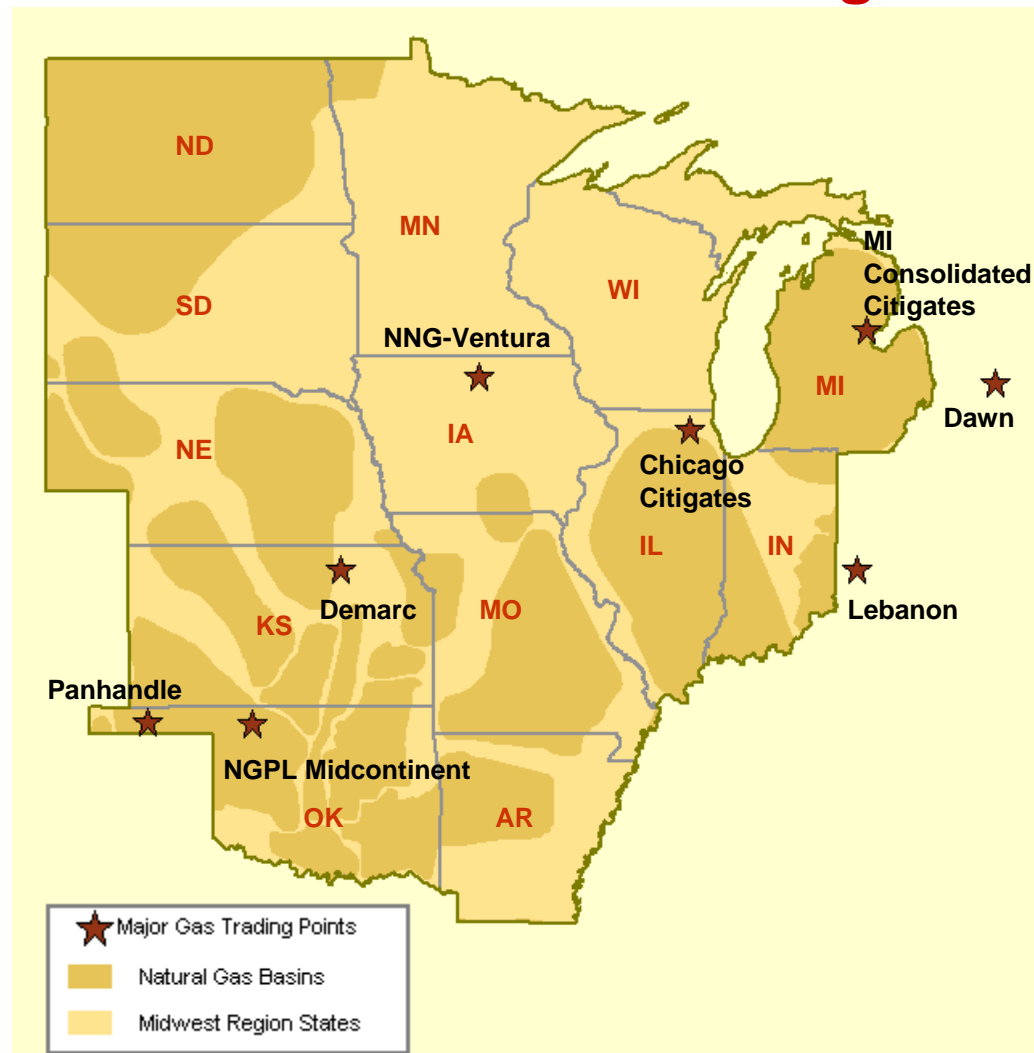


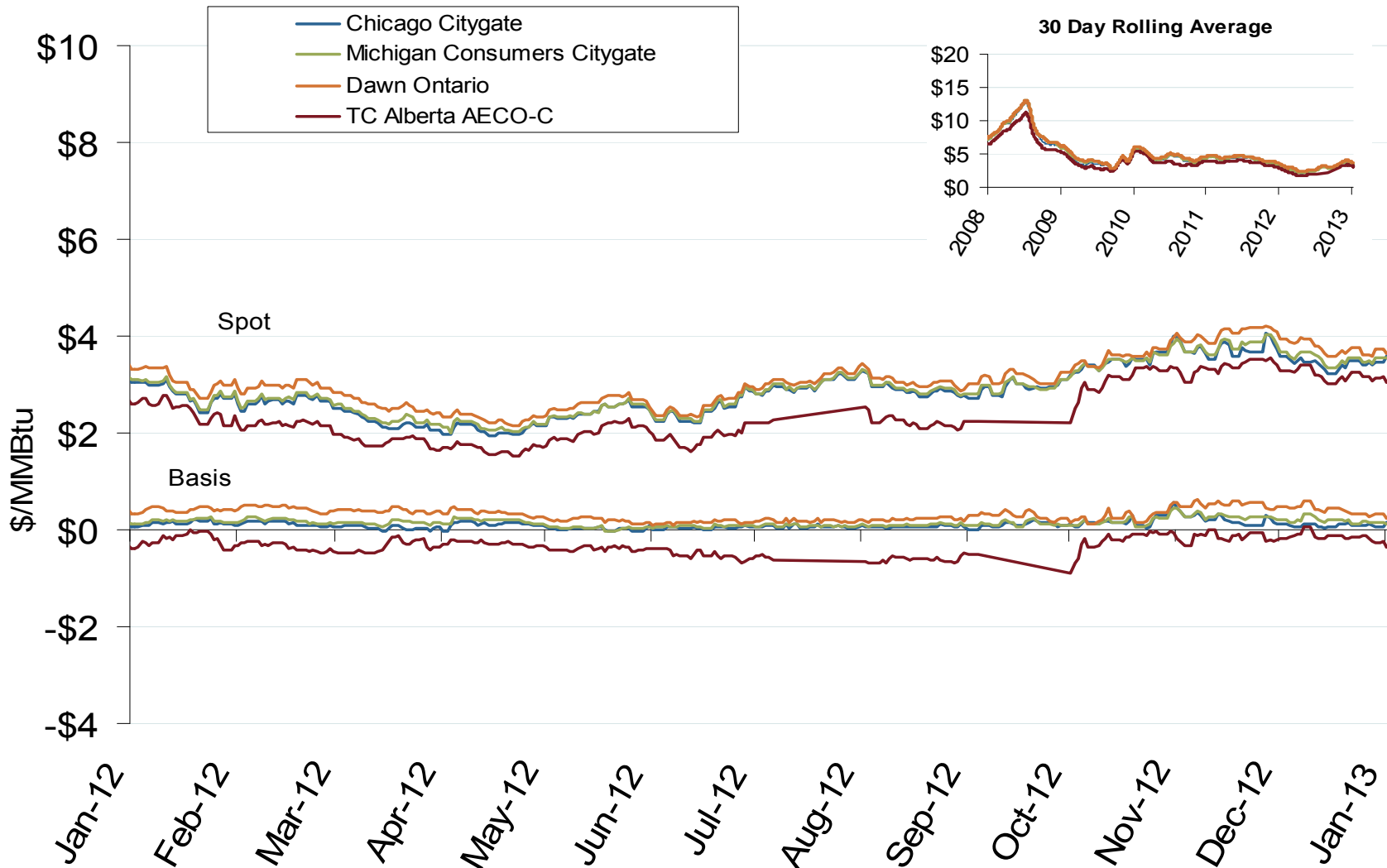
# Midwest Natural Gas Region



## Midwest Annual Average Spot Hub Prices

Annual Average Day Ahead Prices (\$/MMBtu)						
	2008	2009	2010	2011	2012	5-Year Avg
Chicago Citygate	\$8.79	\$3.92	\$4.46	\$4.11	\$2.85	\$4.82
Dawn	\$9.12	\$4.24	\$4.74	\$4.37	\$3.07	\$5.11
MichCon Citygate	\$9.02	\$4.09	\$4.54	\$4.20	\$2.90	\$4.95
AECO	\$7.76	\$3.48	\$3.88	\$3.67	\$2.39	\$4.24
Northern Ventura	\$8.28	\$3.86	\$4.38	\$4.03	\$2.77	\$4.66

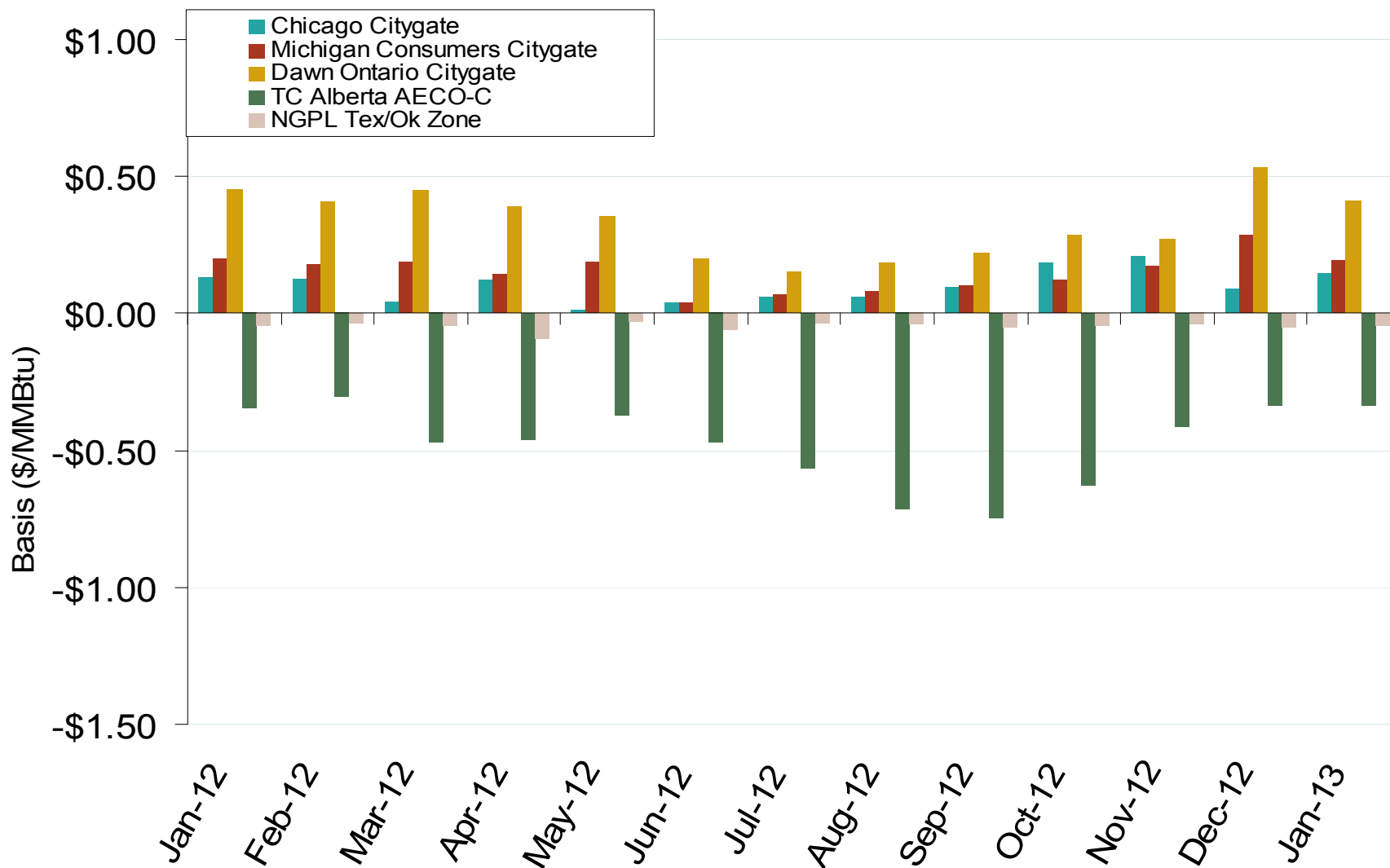
## Midwestern Day-Ahead Hub Spot Prices and Basis



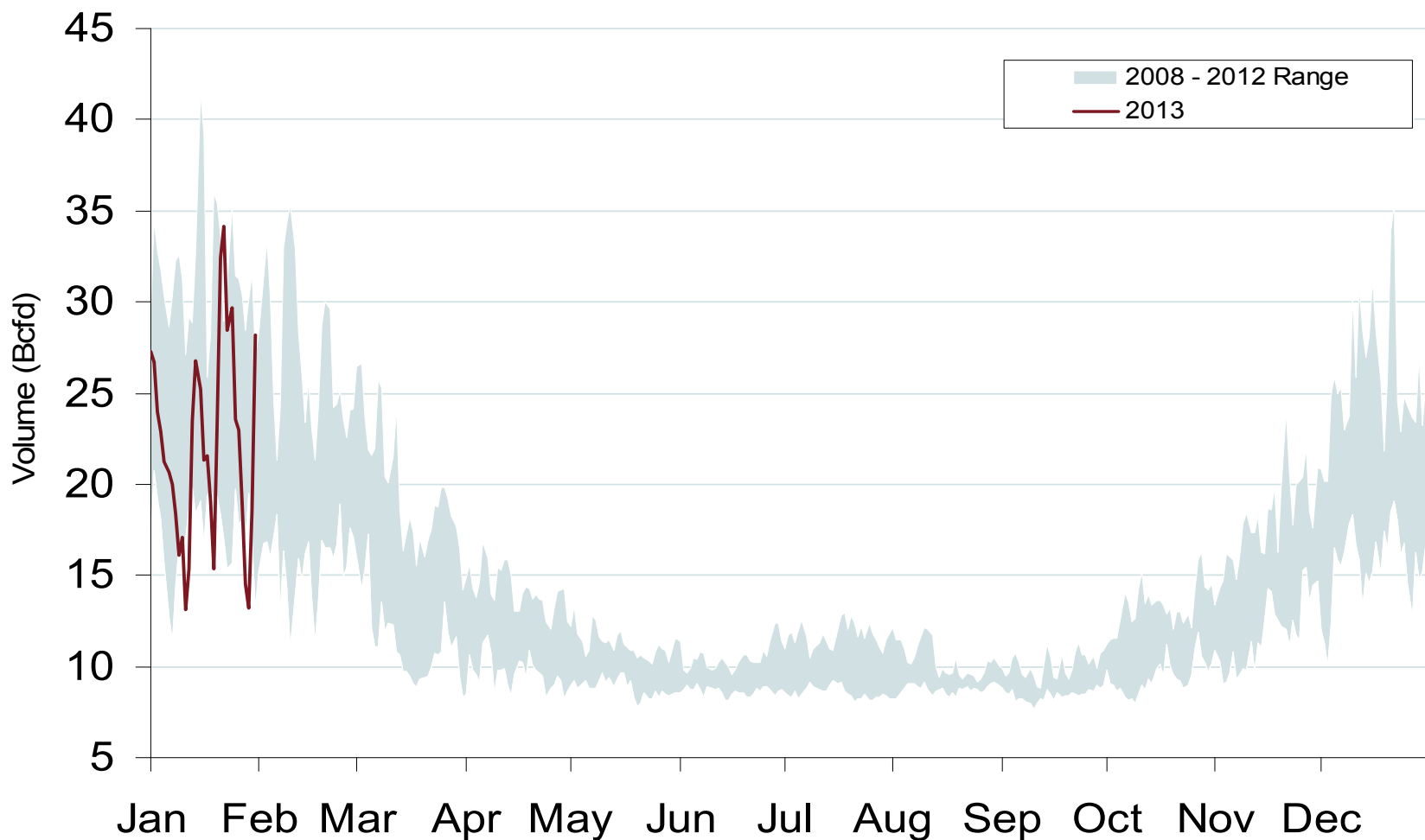
Midwest Natural Gas Market: Average Basis to Henry Hub

Federal Energy Regulatory Commission • Market Oversight • [www.ferc.gov/oversight](http://www.ferc.gov/oversight)

## Midwestern Monthly Average Basis Value to Henry Hub



## Daily Midwest Natural Gas Demand All Sectors



## Midwest Natural Gas Consumption for Power Generation

