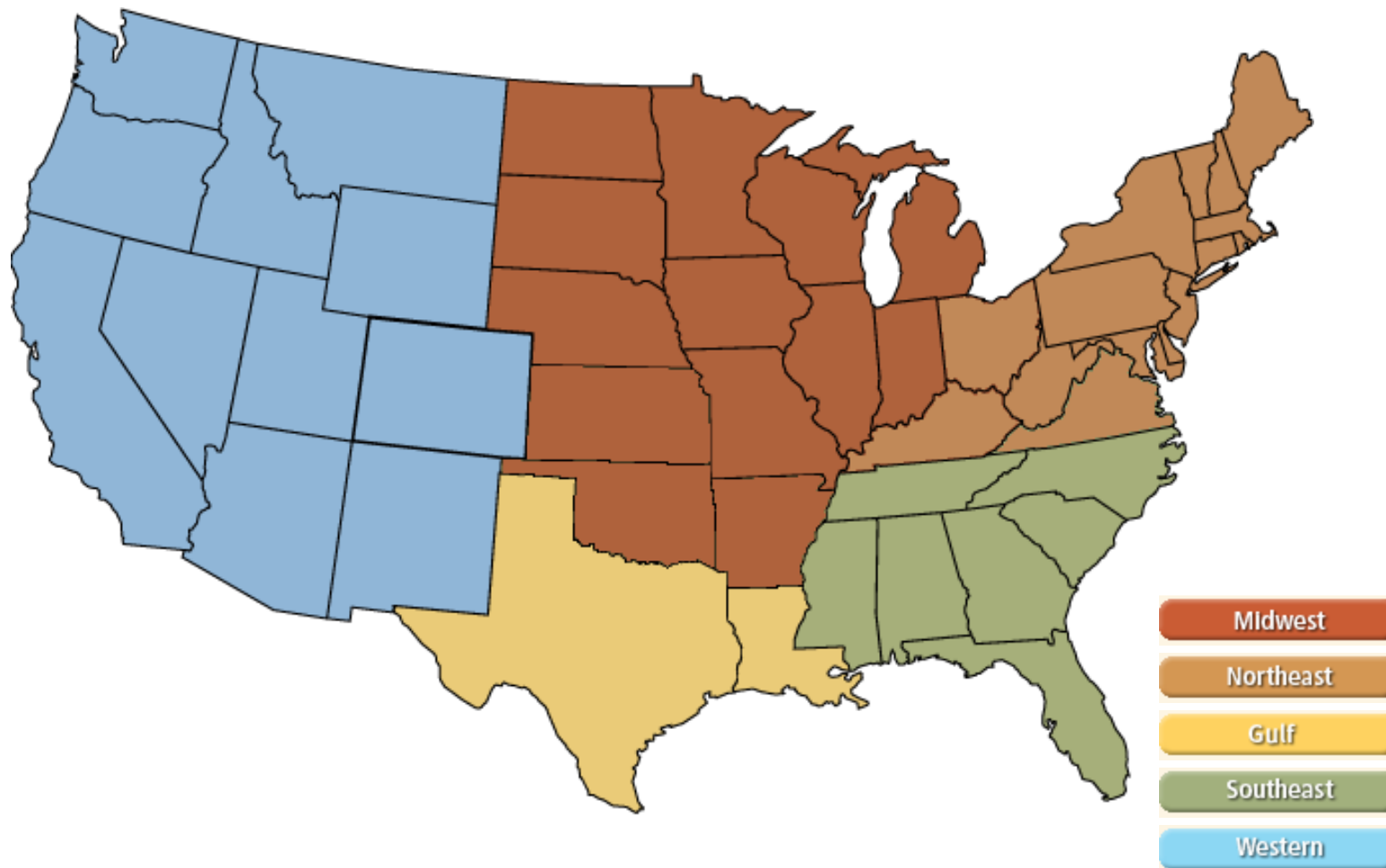
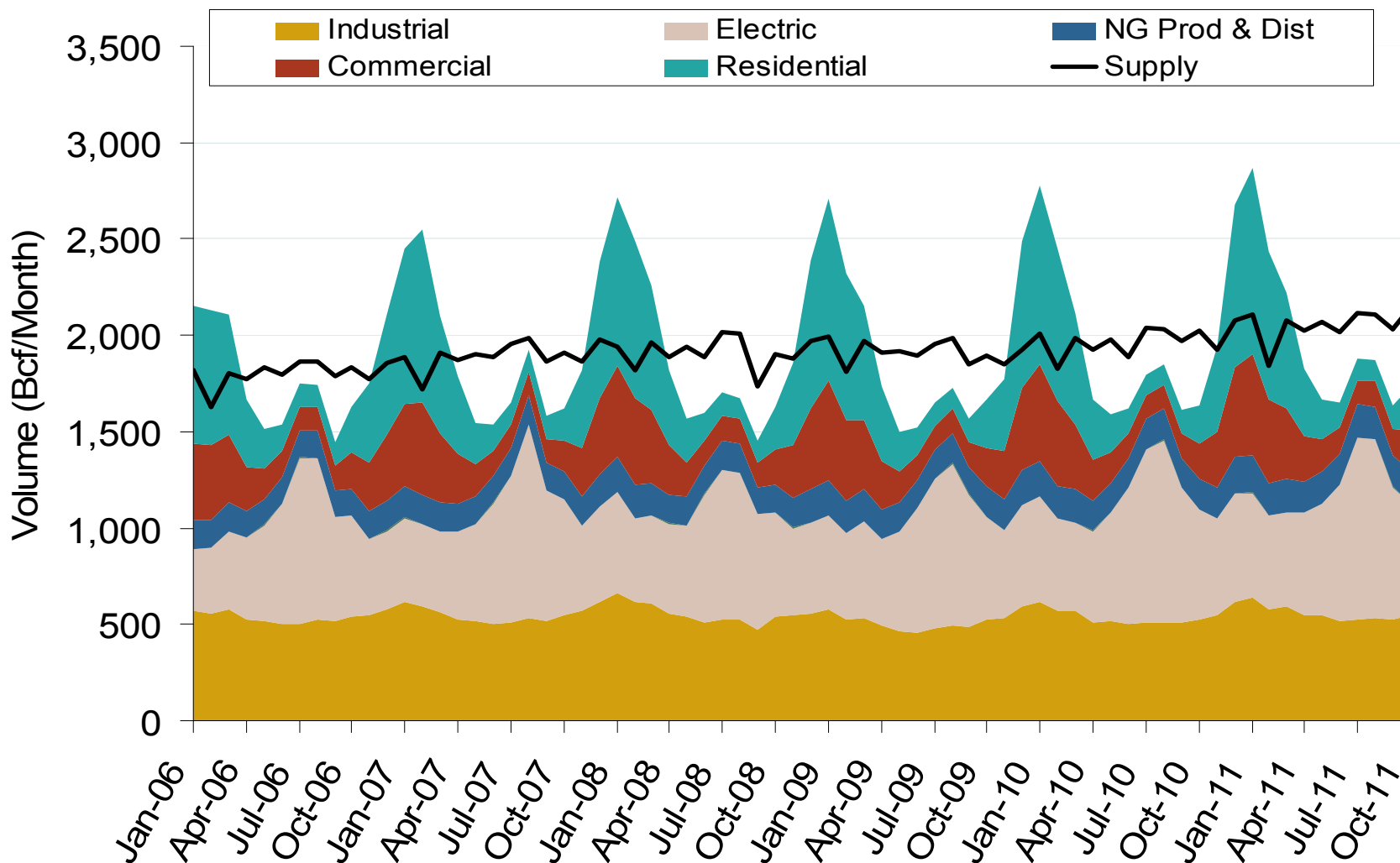


## Natural Gas Market National Overview



## Annual U.S. Natural Gas Consumption by Sector



Notes: Supply includes lower 48 state production, net pipeline imports, and LNG imports

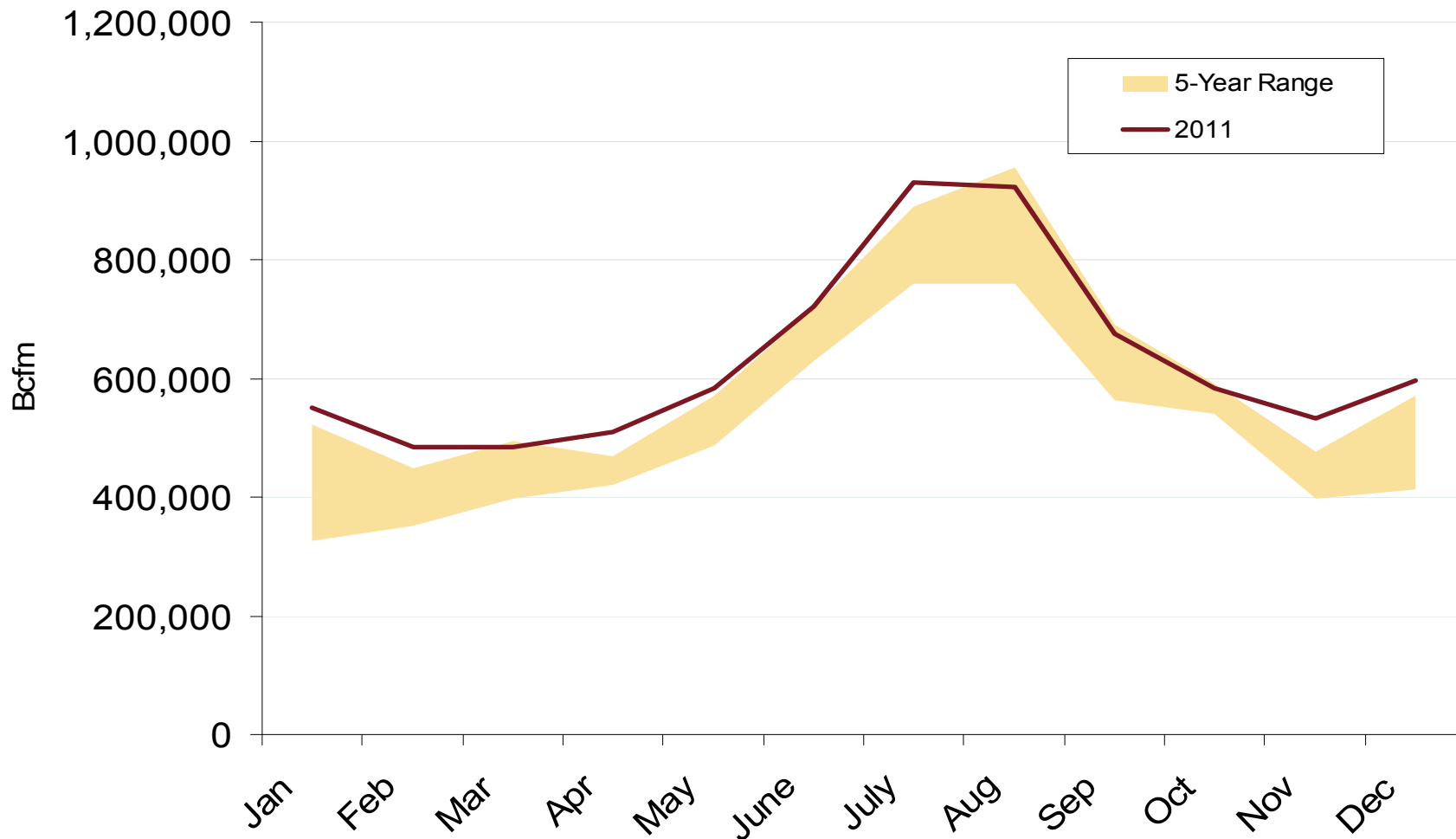
Source: Derived from EIA data

January 2012

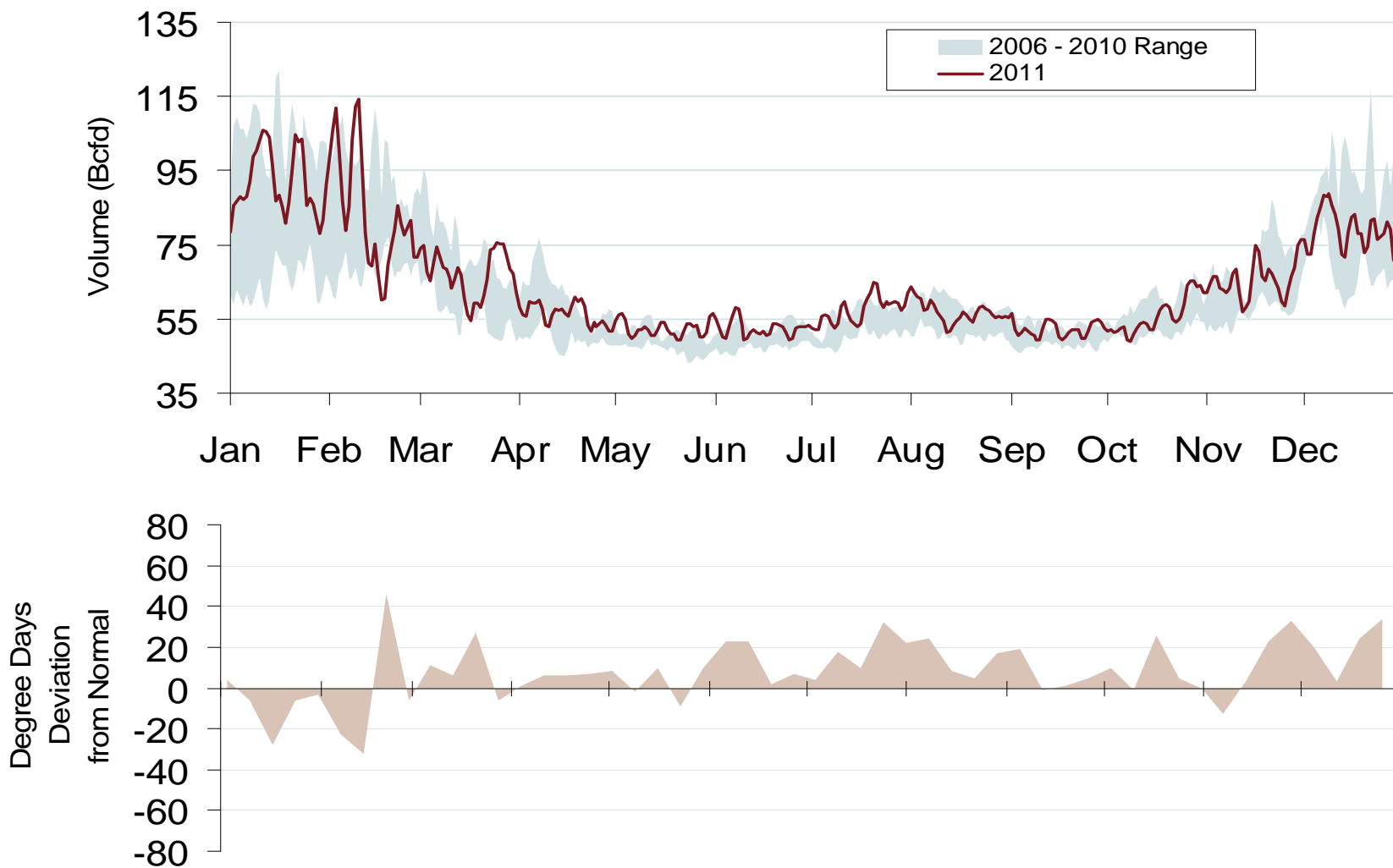
Updated: January 04, 2012

20013

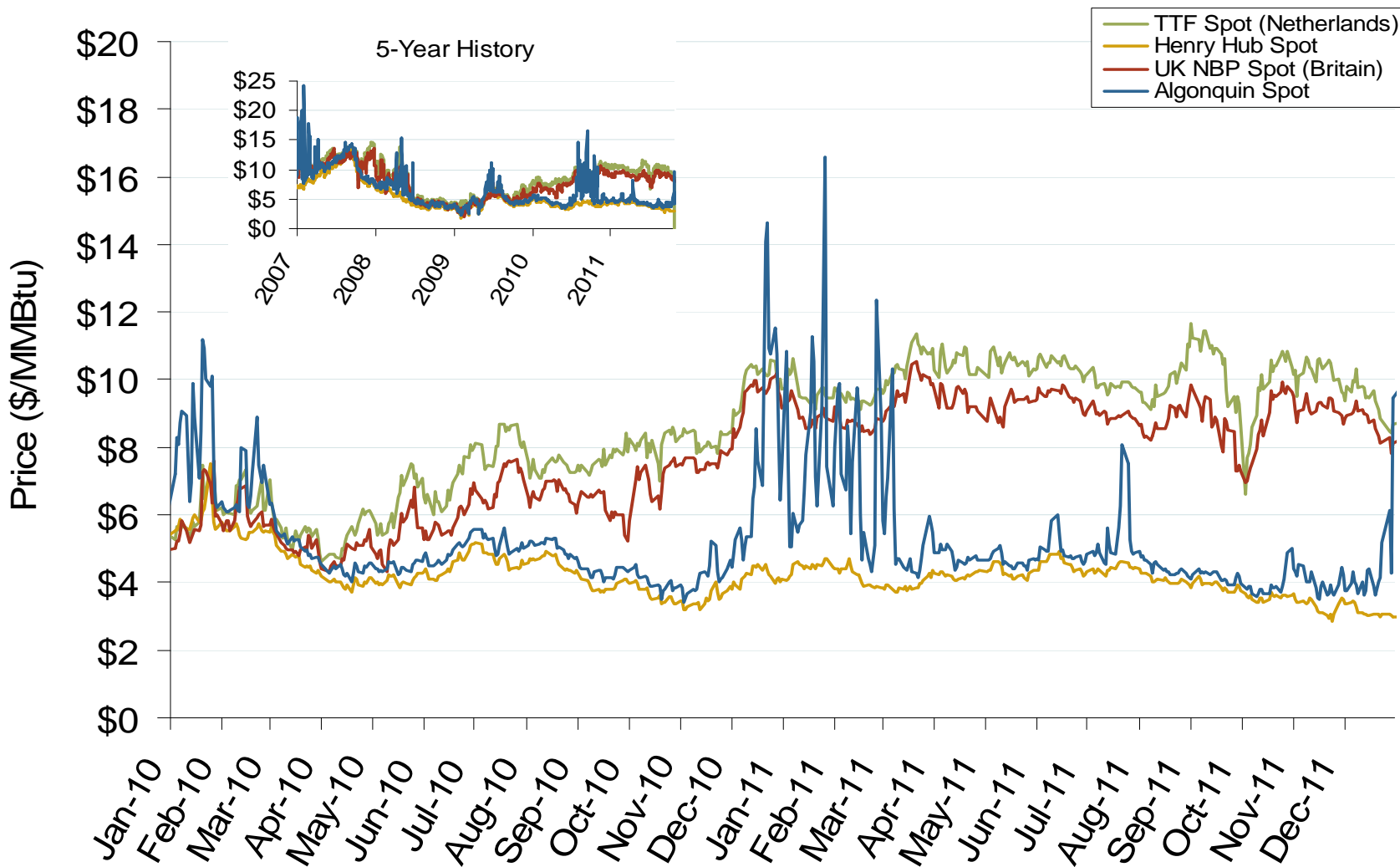
## U.S. Natural Gas Consumption for Power Generation



## Total U.S. Natural Gas Demand (All Sectors) and Temperatures



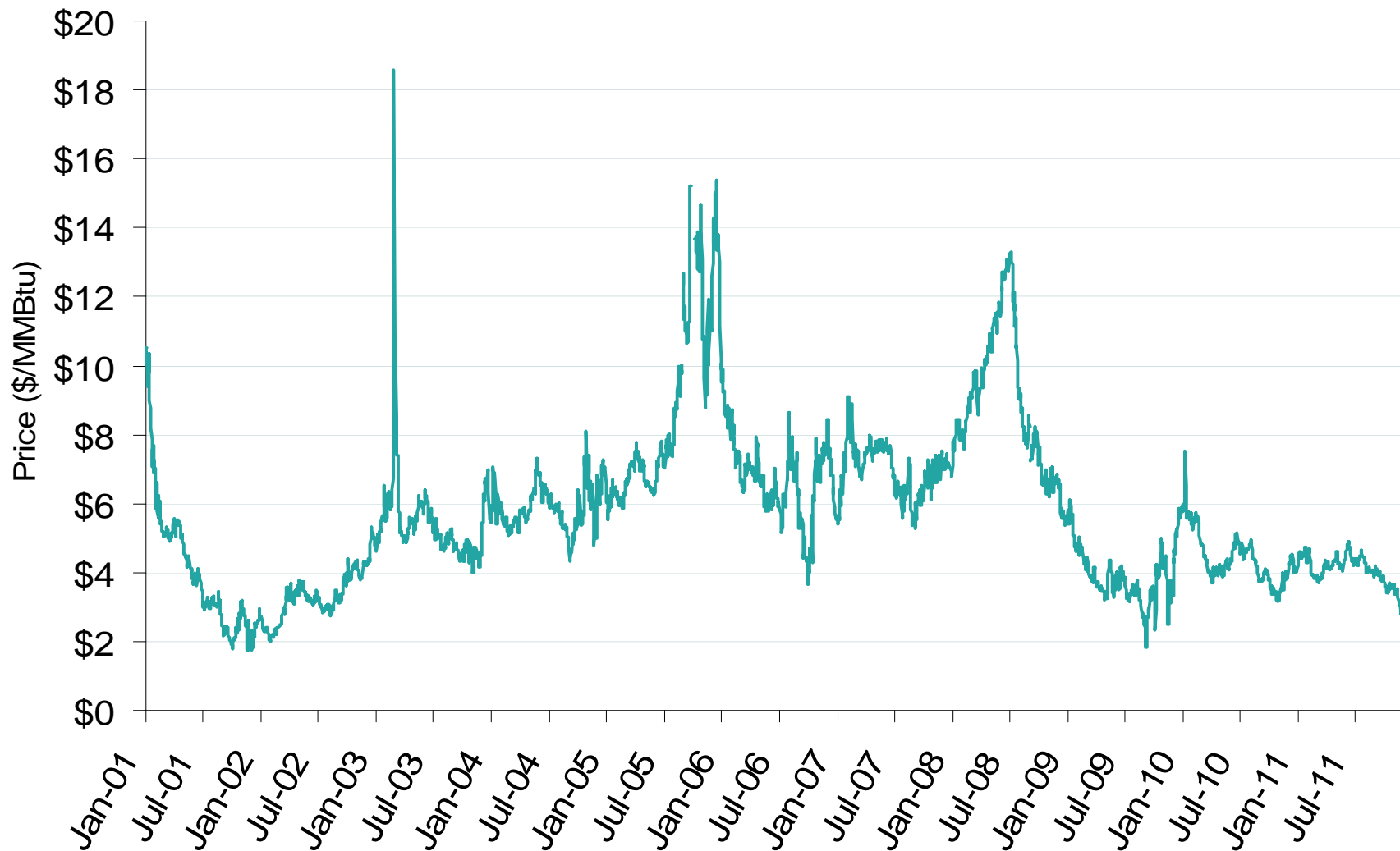
## Atlantic Basin European and US Spot Natural Gas Prices



Natural Gas Market Overview: Henry Hub Spot Prices

Federal Energy Regulatory Commission • Market Oversight • [www.ferc.gov/oversight](http://www.ferc.gov/oversight)

## Henry Hub Natural Gas Daily Spot Prices, 2001-2011



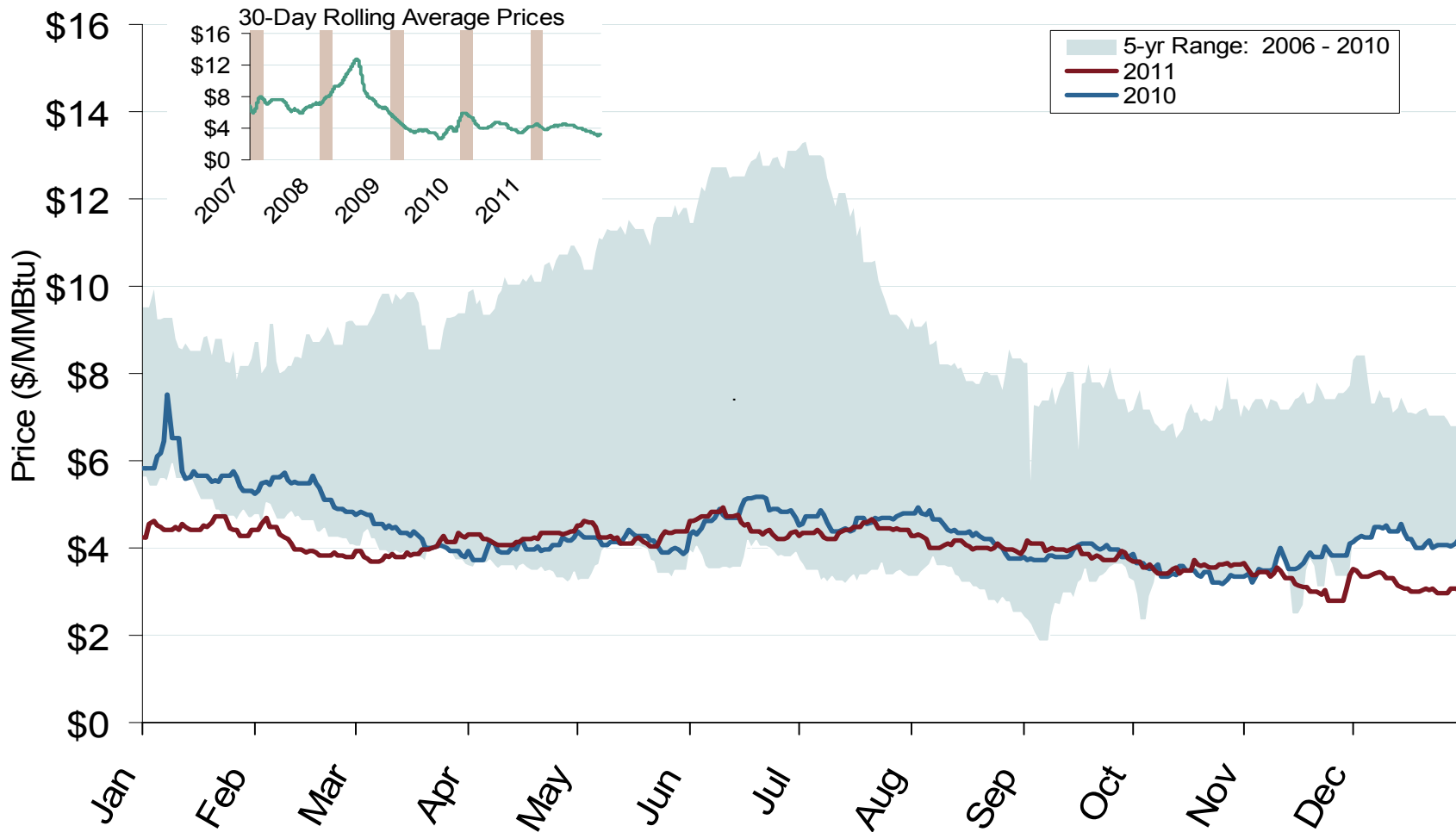
Source: Derived from *Platts* data  
January 2012

Updated: January 03, 2012

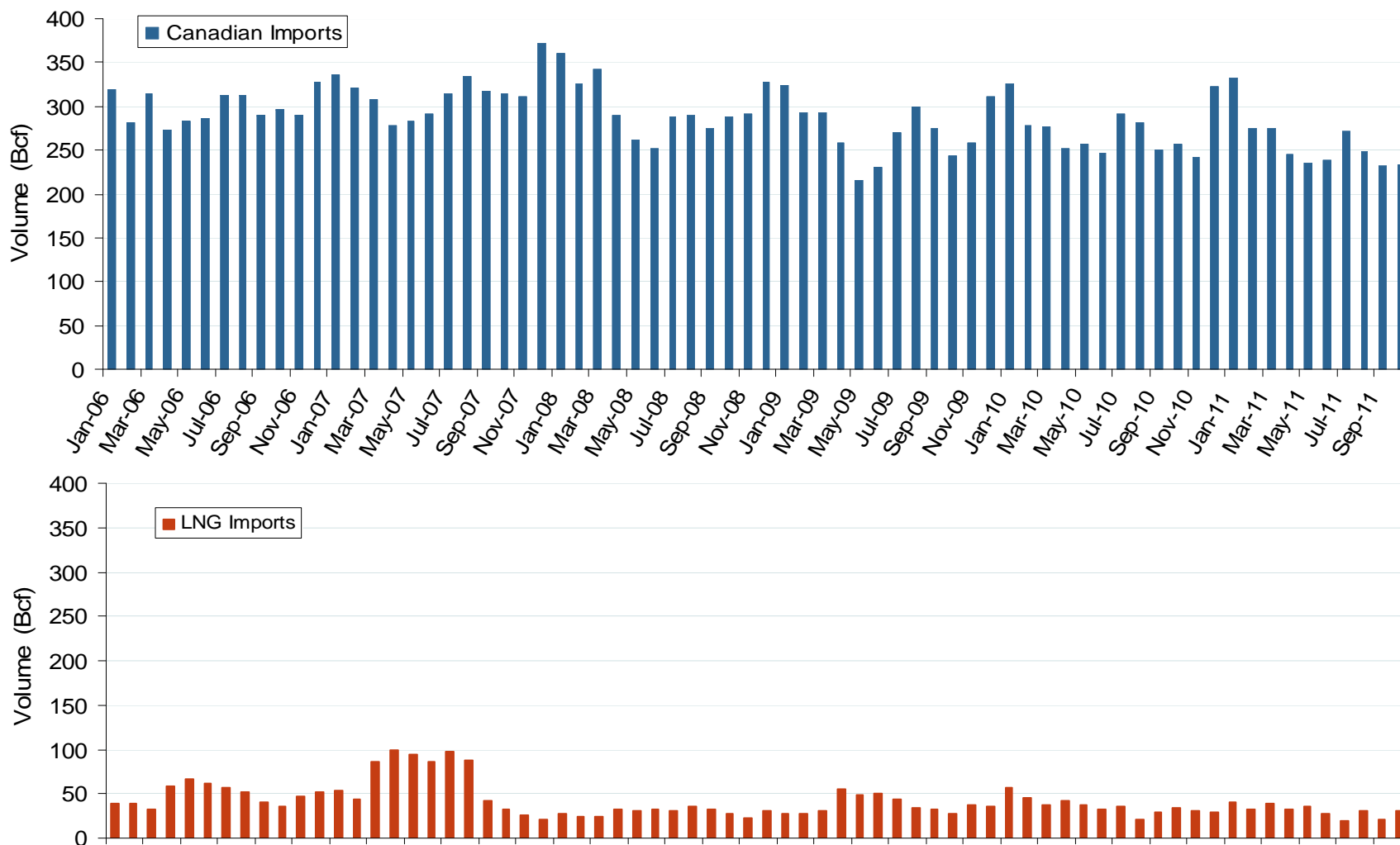
Natural Gas Market Overview: 5 Year Range of Henry Hub Spot Prices

Federal Energy Regulatory Commission • Market Oversight • [www.ferc.gov/oversight](http://www.ferc.gov/oversight)

## Henry Hub Natural Gas Daily Spot Prices

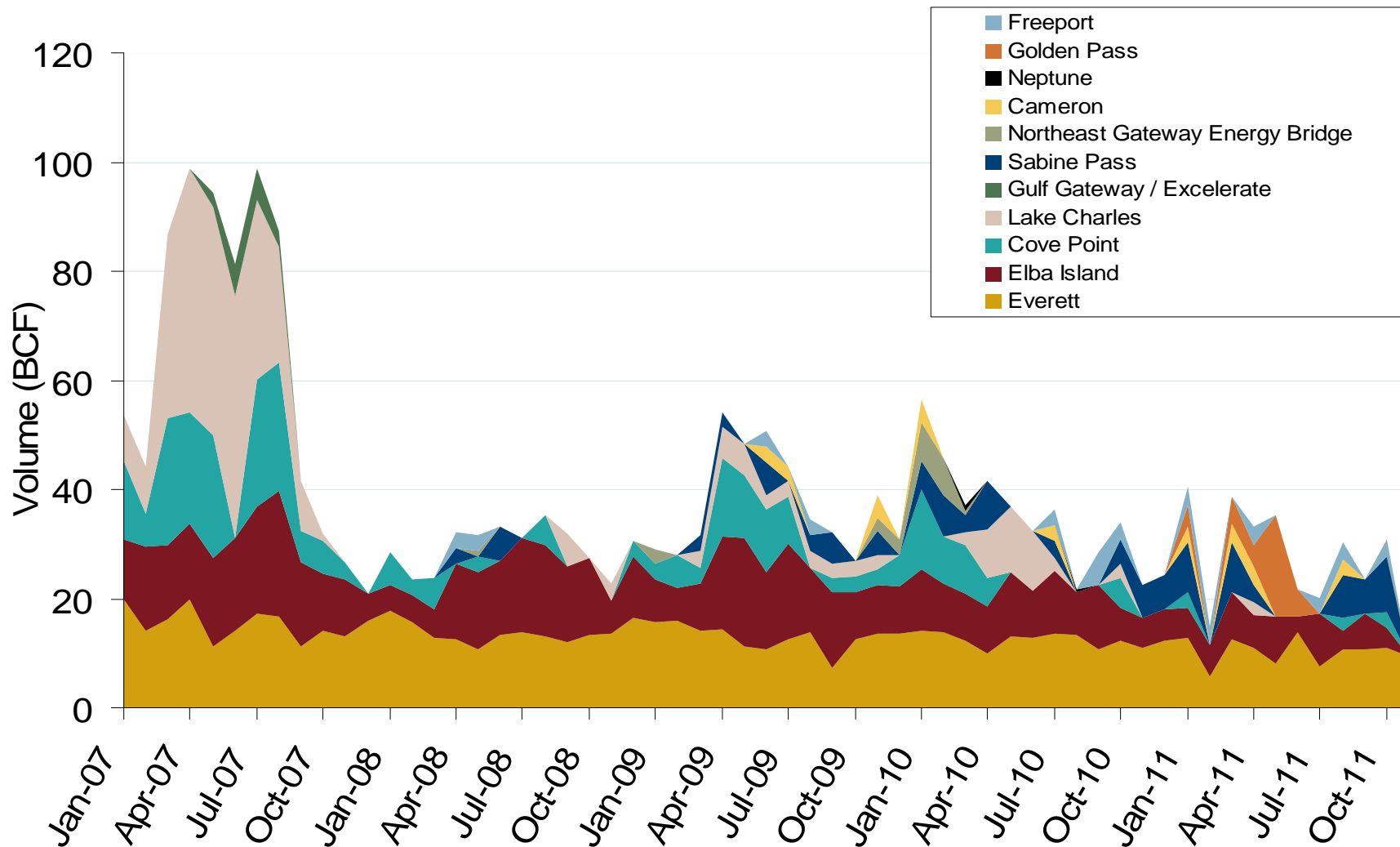


## Canadian and LNG Natural Gas Imports Into the U.S.

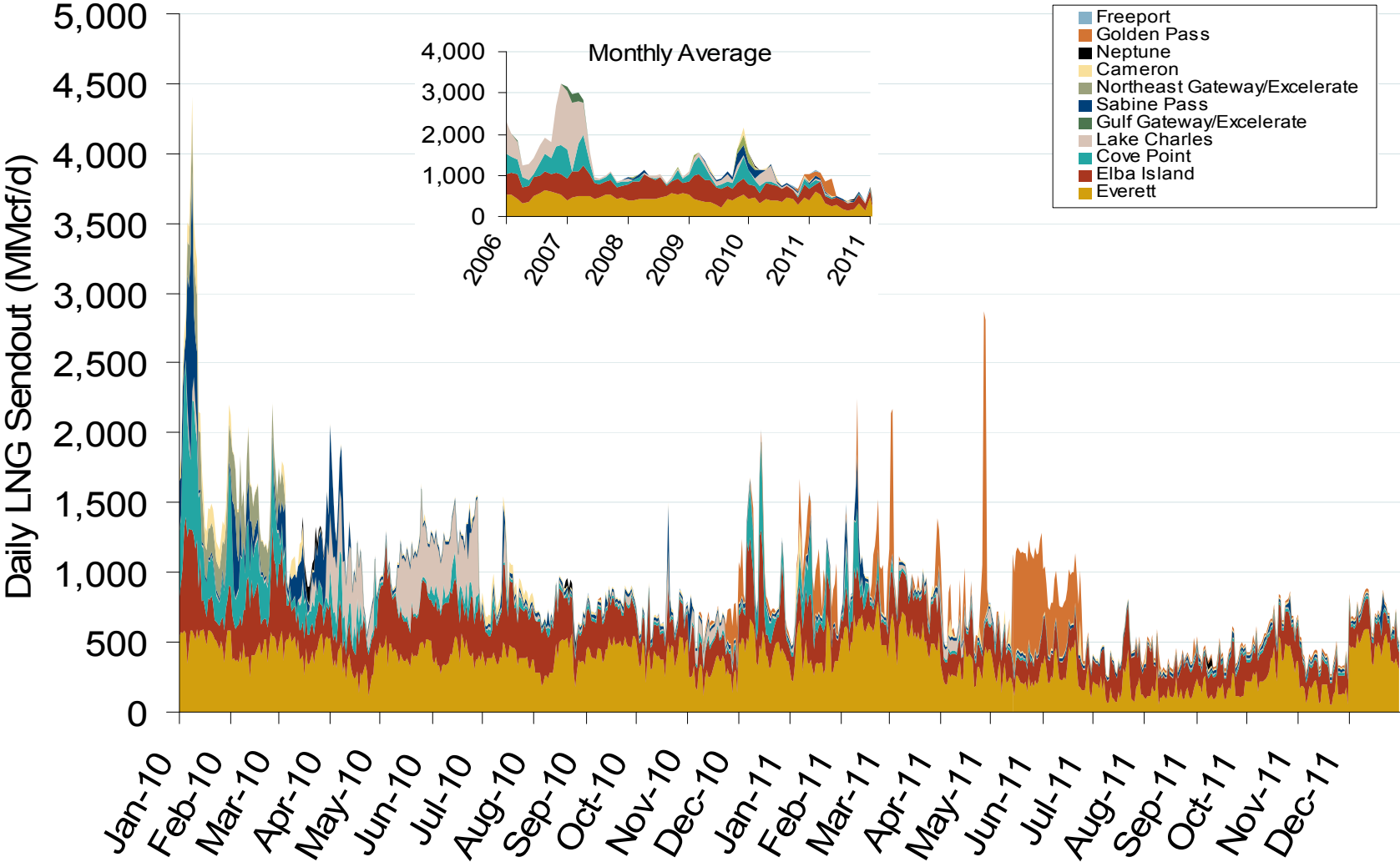




## Monthly Gas Imports at Existing U.S. LNG Facilities



### Daily Gas Sendout from Existing LNG Facilities



Notes: Everett data includes flows onto the AGT and TGP interstate lines, plus estimates of flows to the Mystic 7 power plant, Keyspan Boston Gas, and LNG trucked out of the terminal. Excludes Freeport LNG which flows via intrastate pipelines

Source: Derived from Bentek data

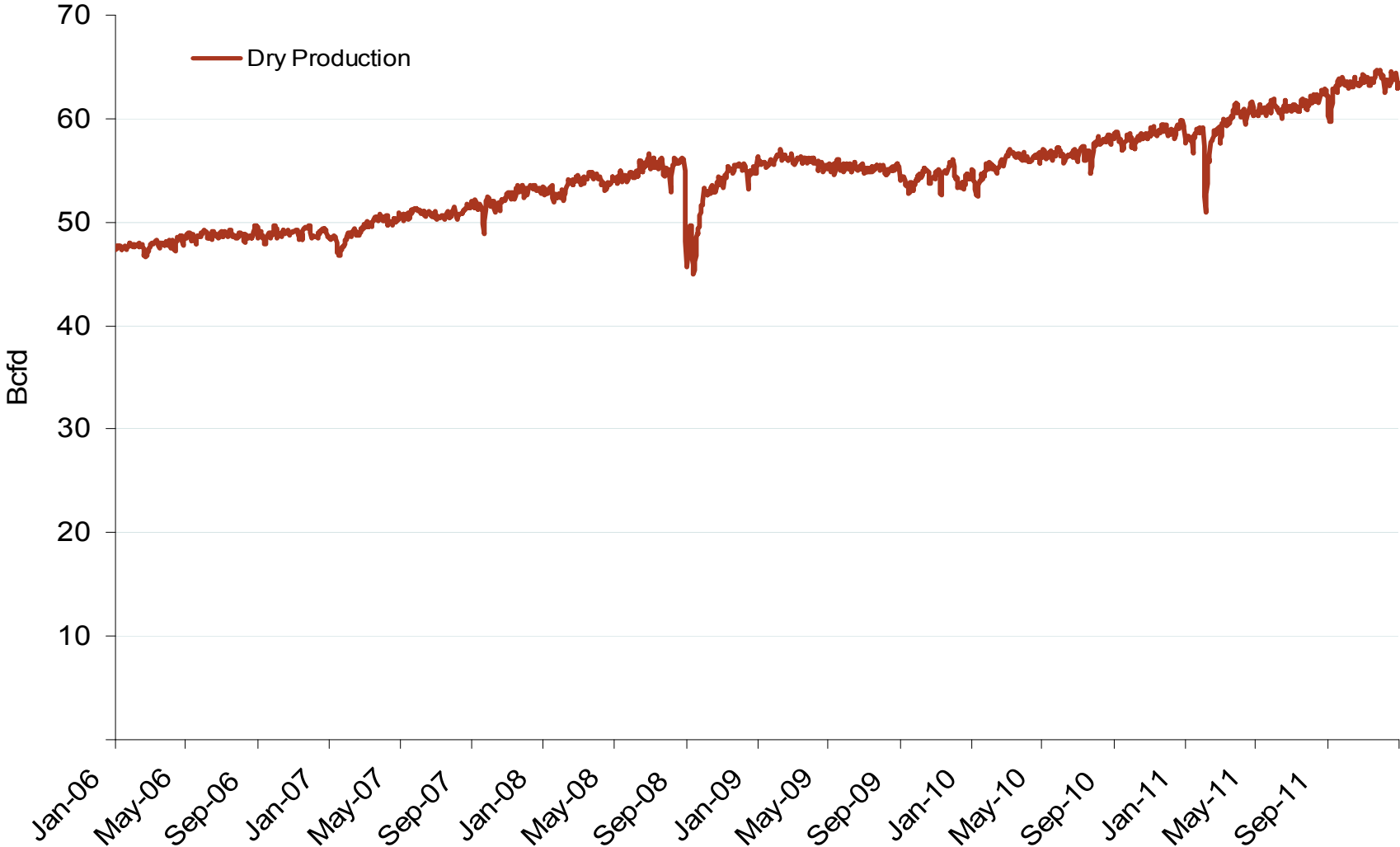
January 2012

Updated: January 09, 2012

## World LNG Estimated February 2012 Landed Prices



# Monthly U.S. Dry Gas Production – Lower 48 States



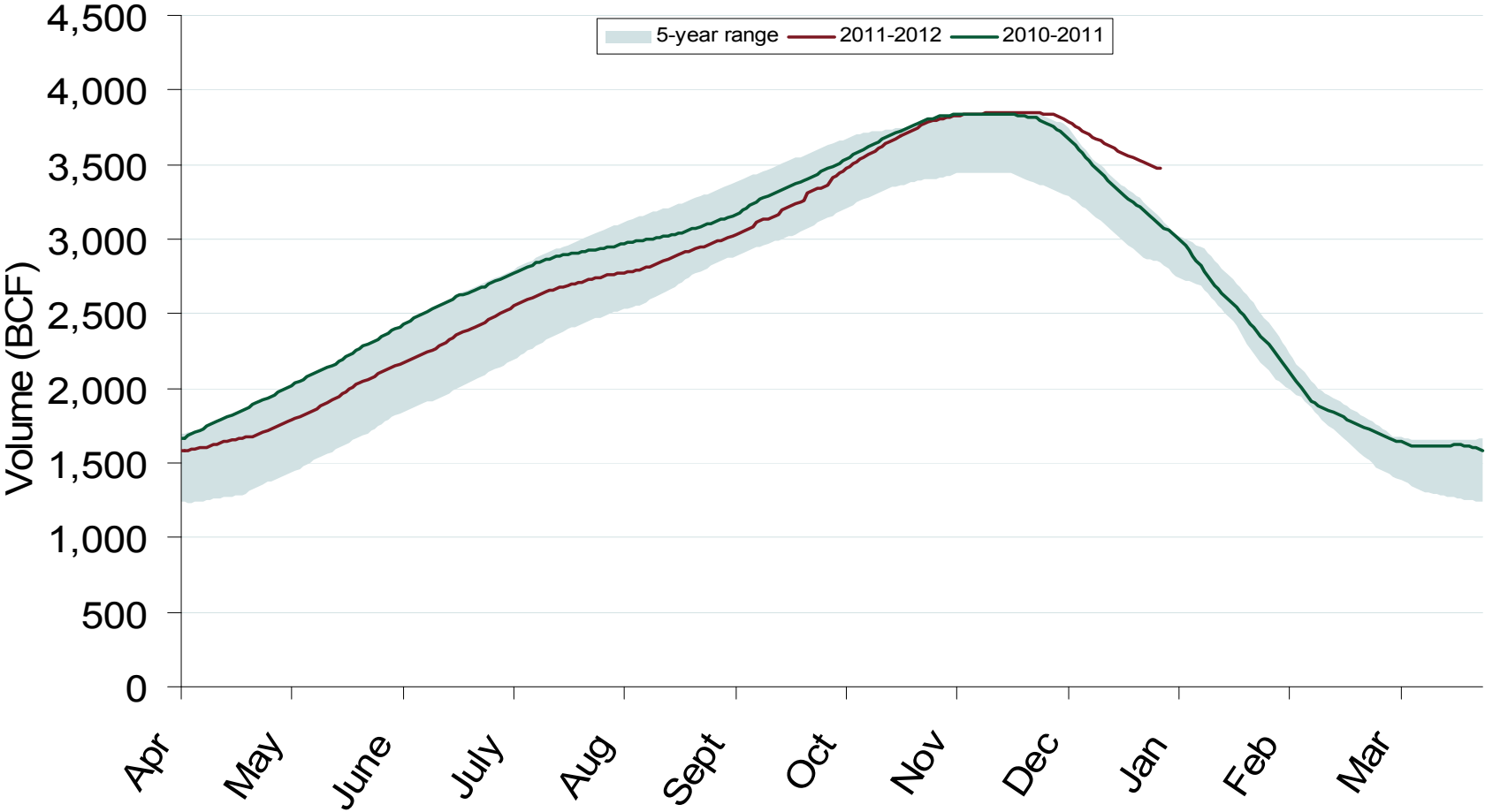
Note: Prior to July 2010, chart was derived from a combination of EIA and Bentek Energy data

Source: Derived from Bentek Energy data

January 2012

Updated: January 09, 2012

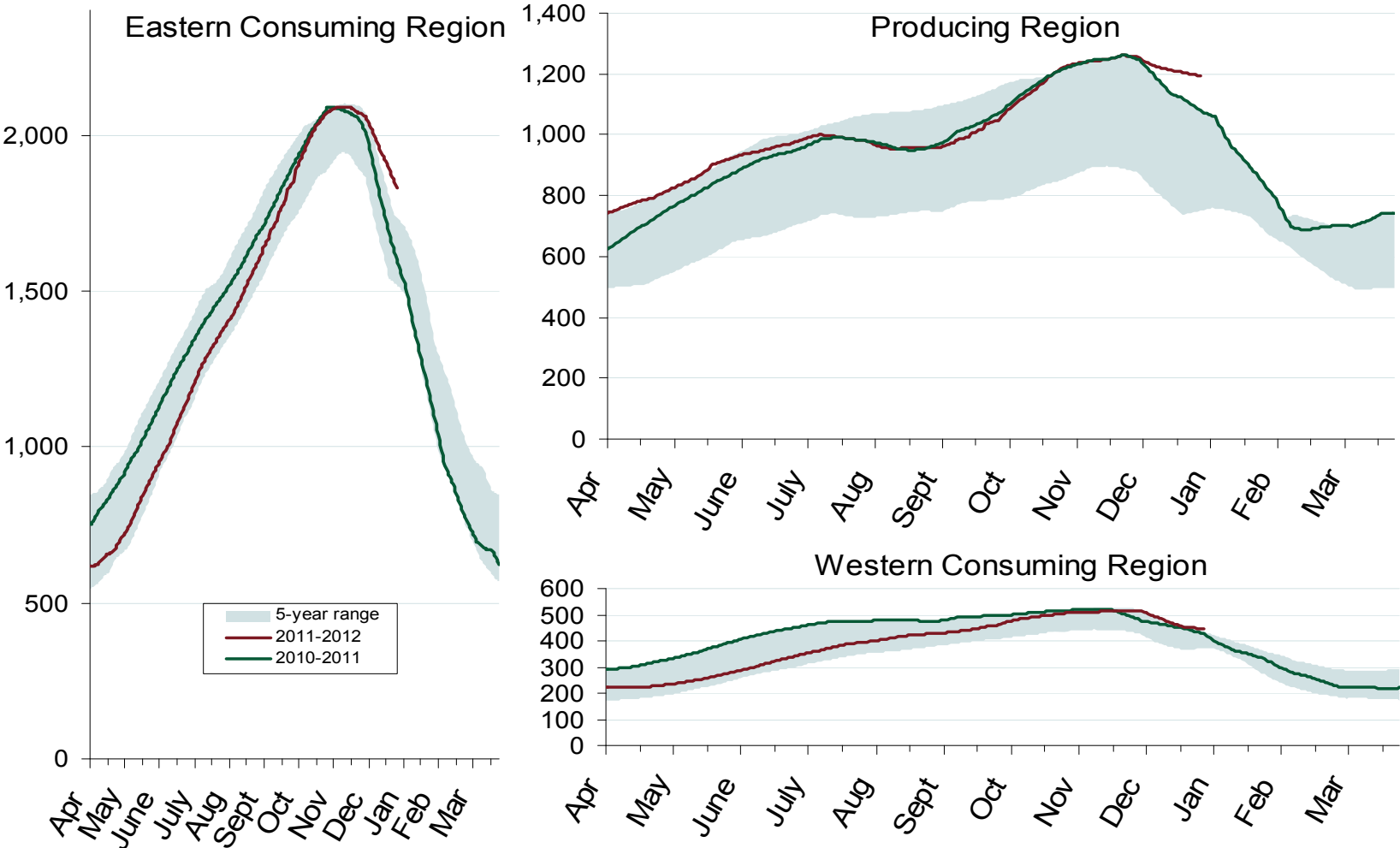
### Total U.S. Working Gas in Storage



Source: Derived from EIA data  
January 2012

Updated: January 05, 2012

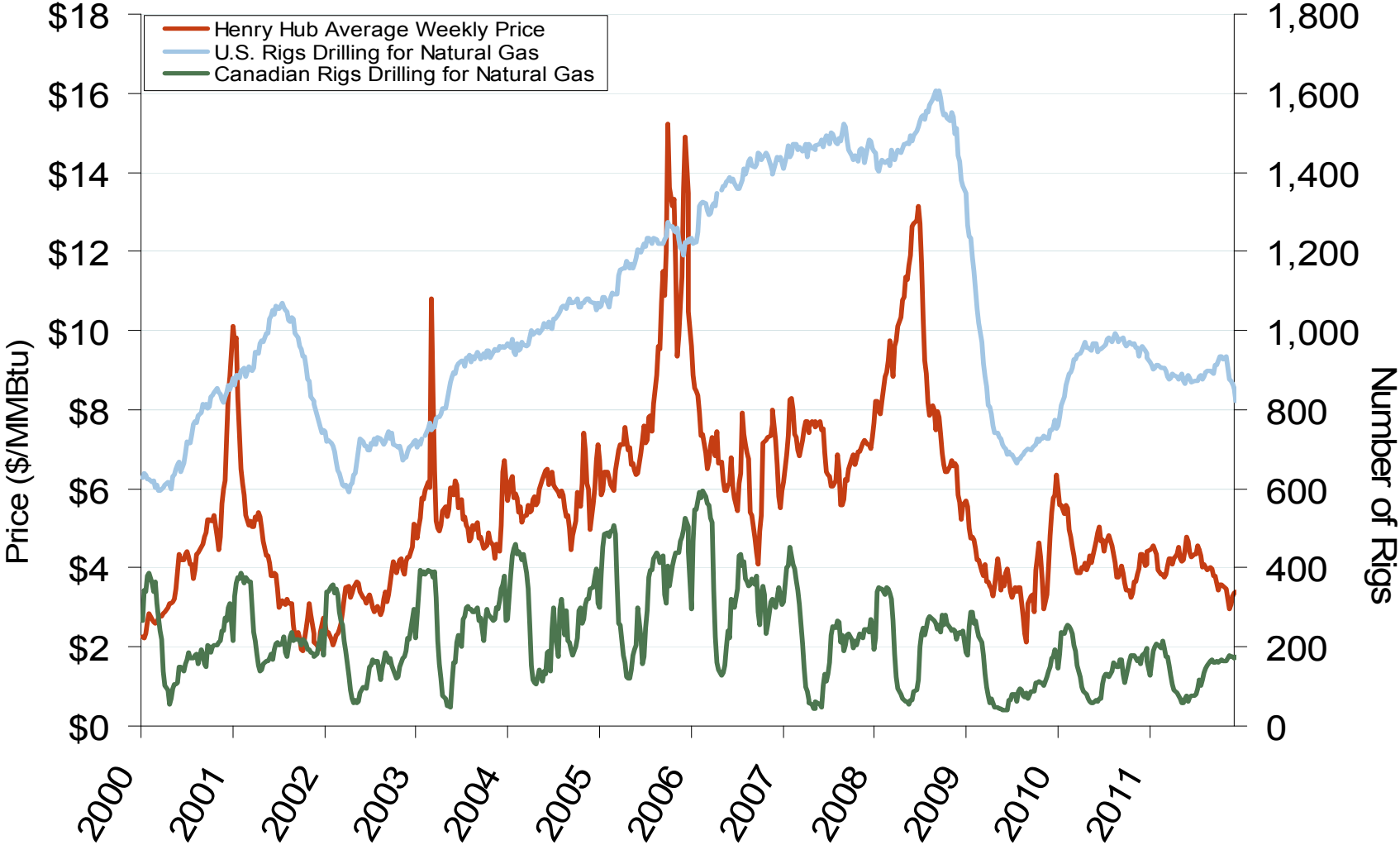
# Regional Totals of Working Gas in Storage



Source: Derived from EIA data  
January 2012

Updated: January 05, 2012

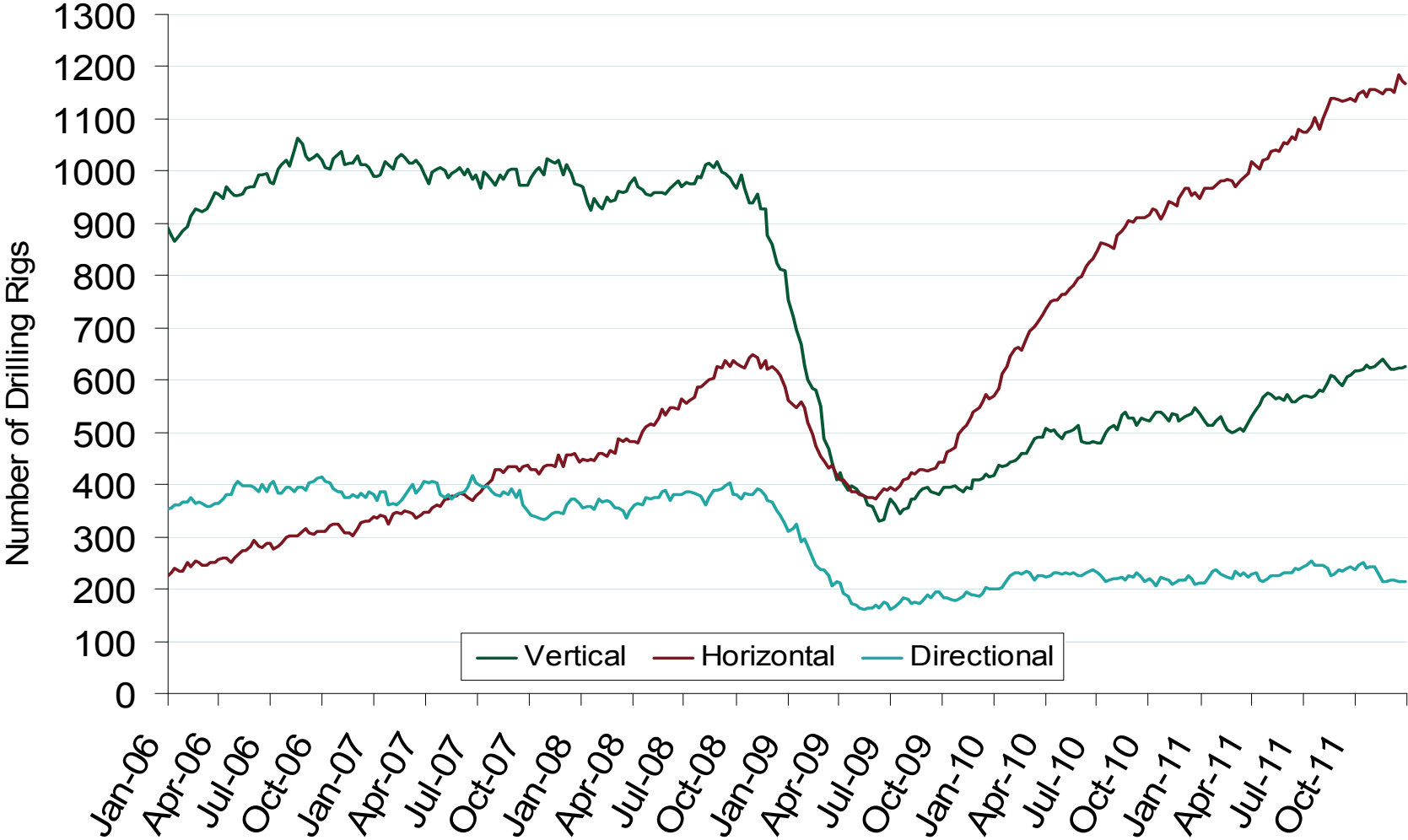
# U.S. and Canadian NG Drilling Rig Count and Daily Spot Prices



Source: Derived from *Platts* and *Baker Hughes* data  
January 2012

Updated: January 03, 2012

## U.S. Oil and Natural Gas Drilling Rig Count by Type

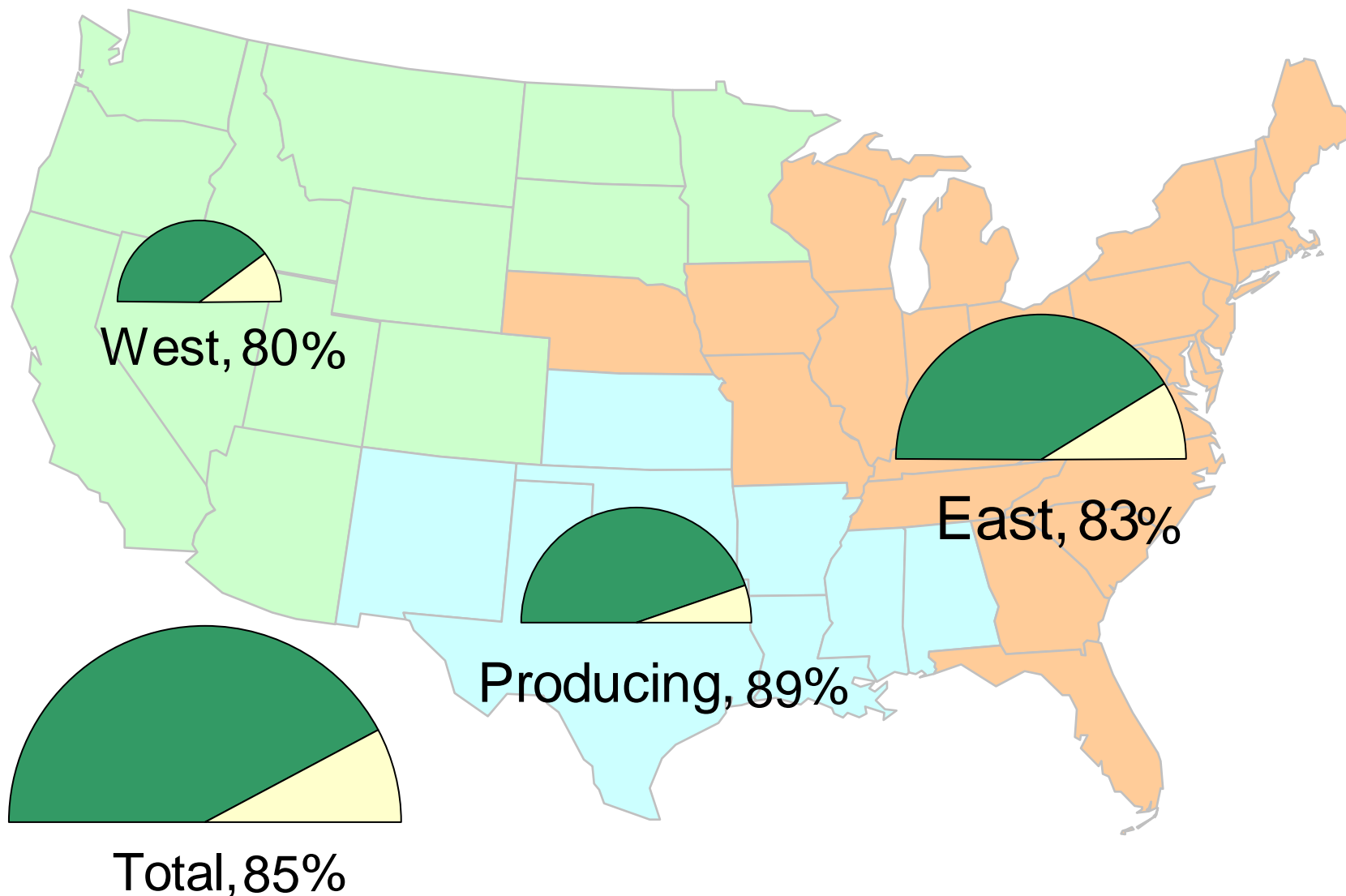


Source: Derived from *Platts* and *Baker Hughes* data  
January 2012

Updated: January 03, 2012



## Natural Gas Storage Inventories – December 30, 2011



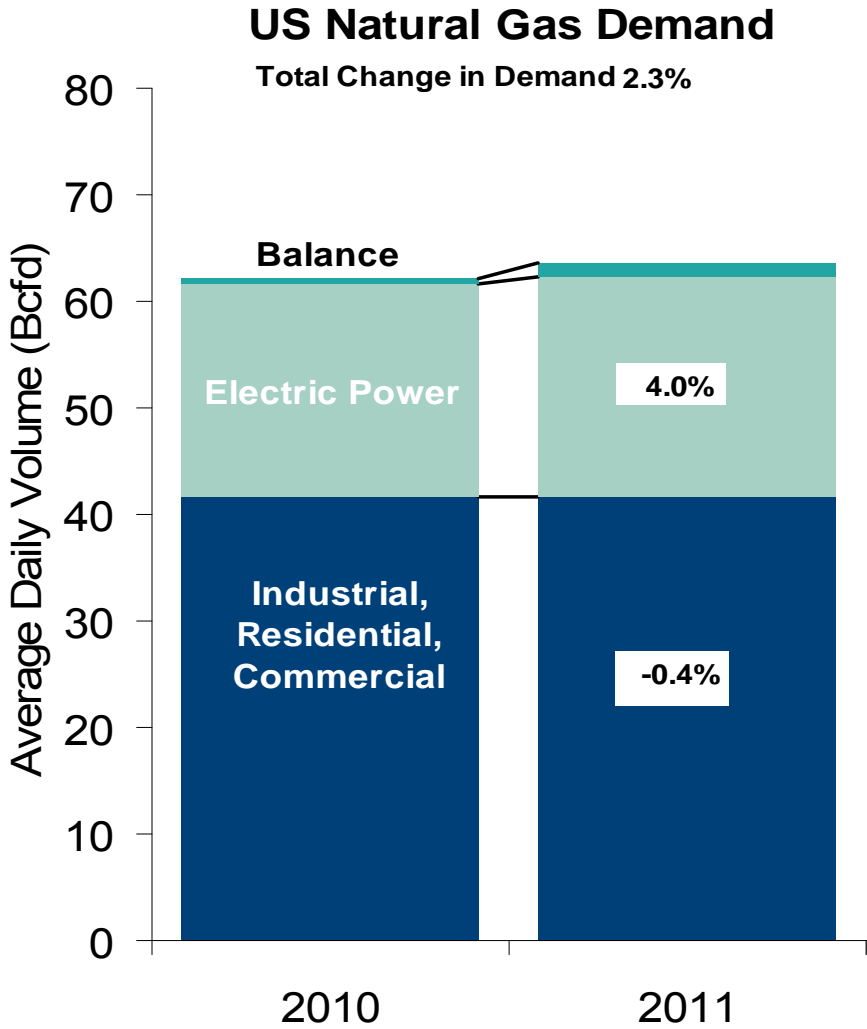
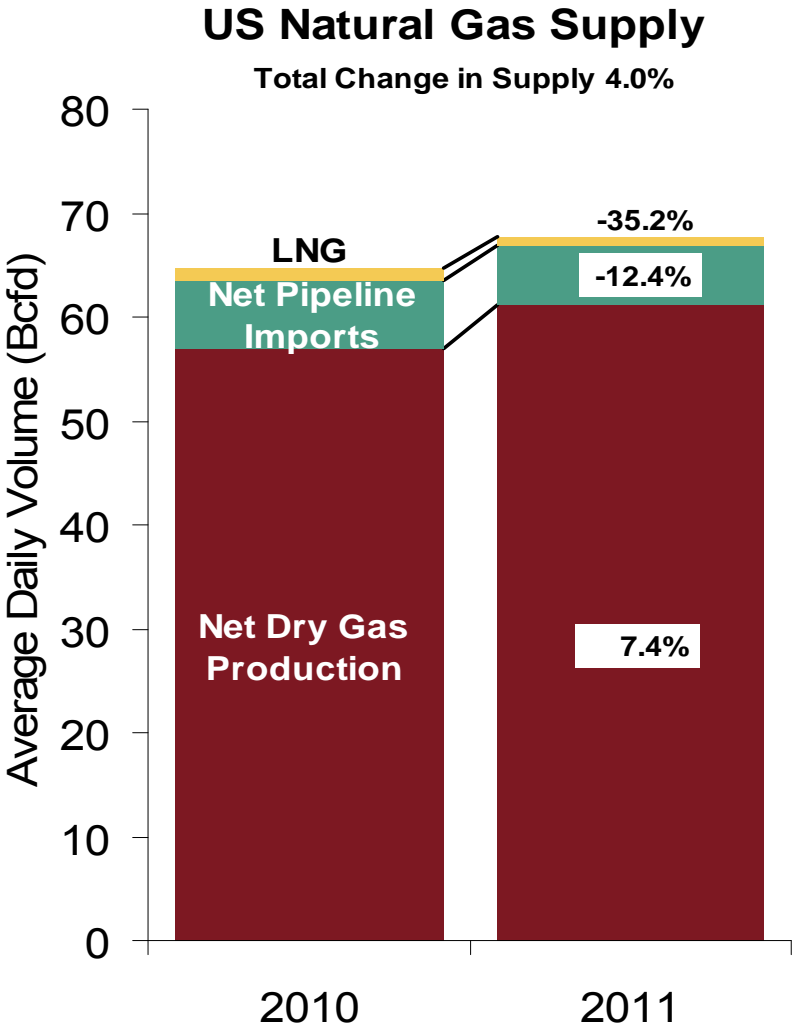
Source: Derived from *EIA Storage* and *Estimated Working Gas Capacity* data

January 2012

Updated January 3, 2012

20022

# U.S. NG Supply and Demand 2010 vs. 2011: January - December



Note: Balance includes all amounts not attributable to other categories.

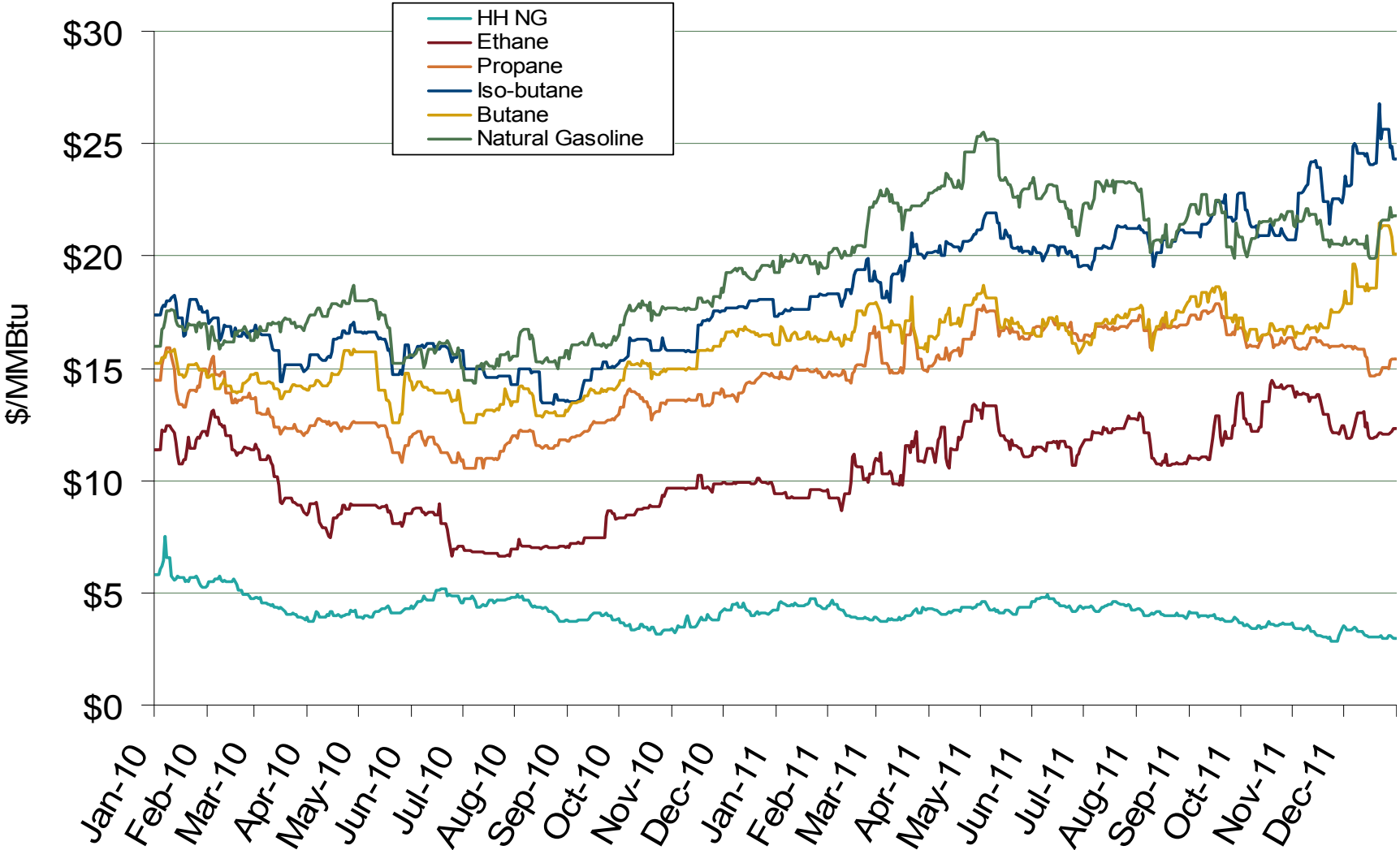
Source: Derived from *Bentek Energy* data

January 2012

Updated: January 13, 2012

Federal Energy Regulatory Commission • Market Oversight • [www.ferc.gov/oversight](http://www.ferc.gov/oversight)

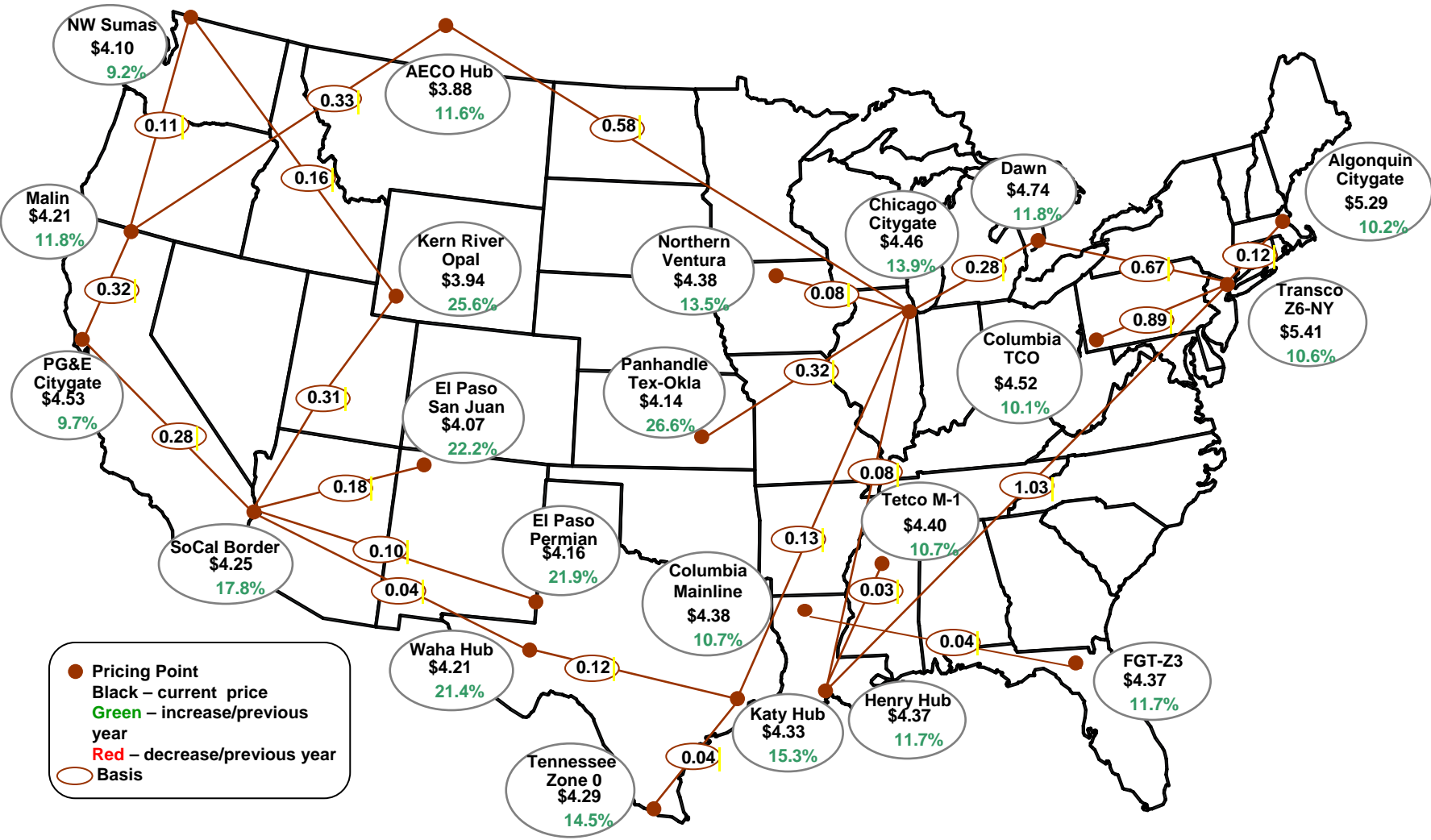
## U.S. Natural Gas vs. Natural Gas Liquids (NGL) Prices



Source: Derived from Bloomberg Data  
January 2012

Updated: January 04, 2012

# Average Spot Gas Prices, 2010 (\$MMBtu)



Source: Derived from Platts data. January 2012

Updated January 10, 2011