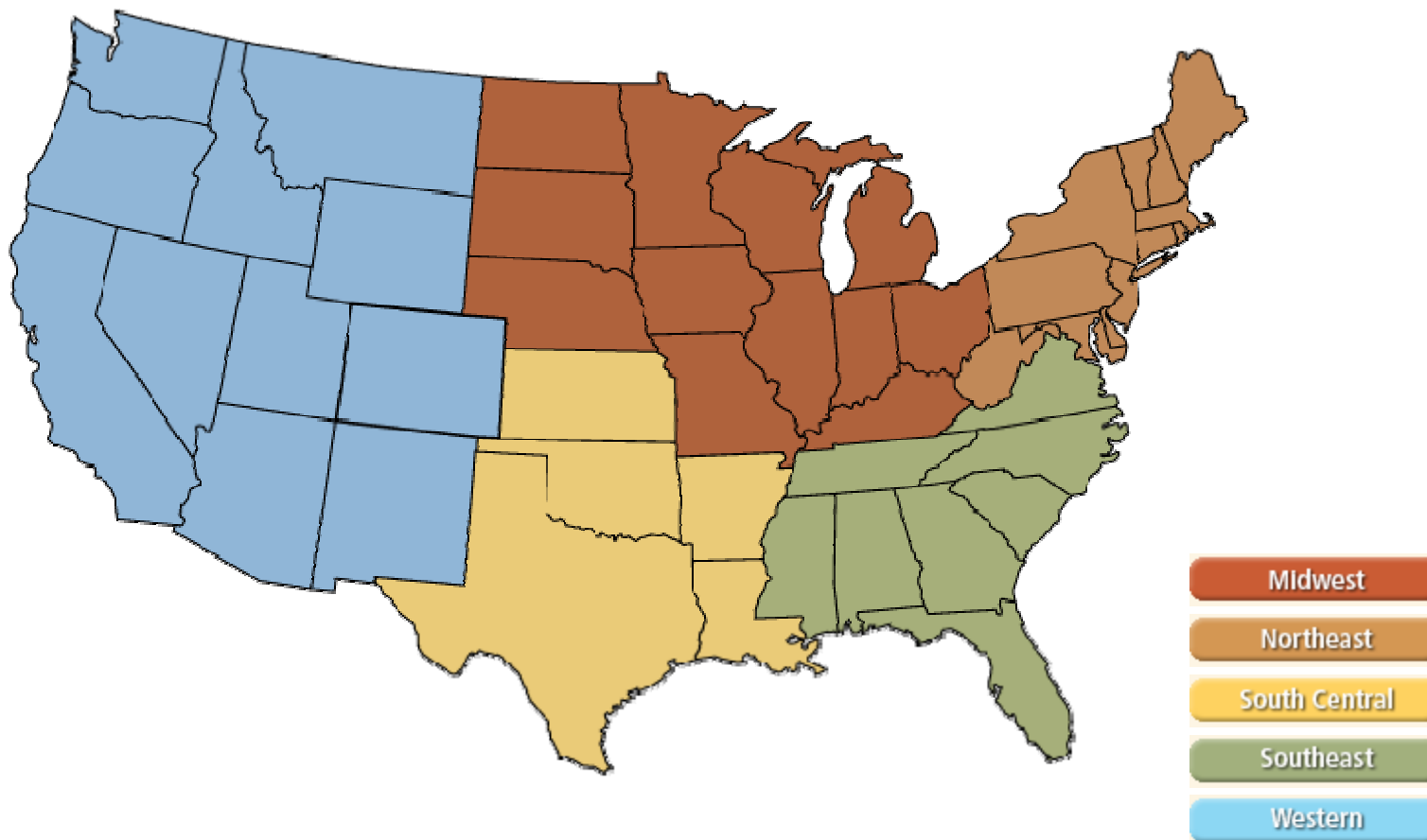
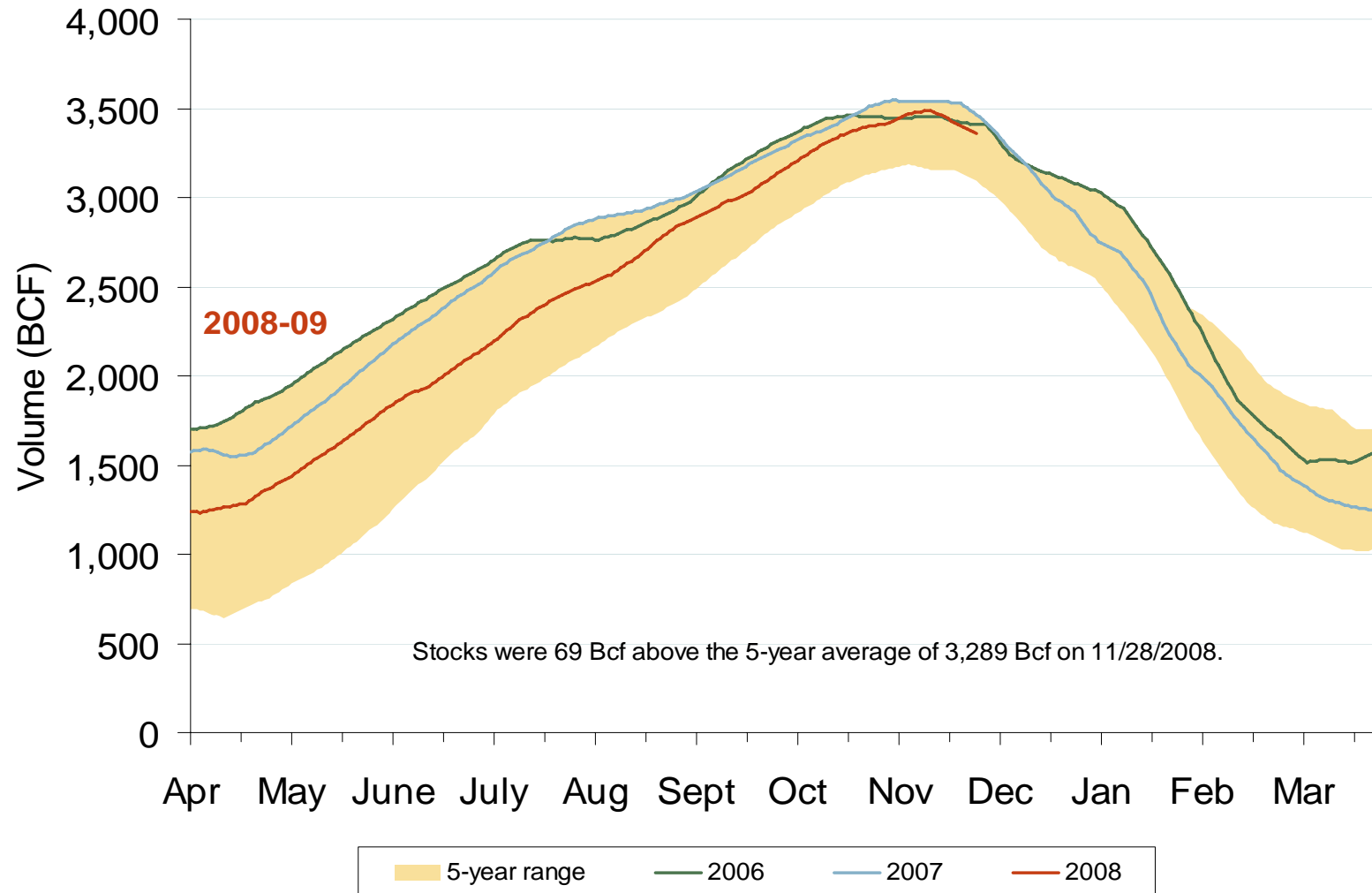


Natural Gas Market National Overview



Total U.S. Working Gas in Storage

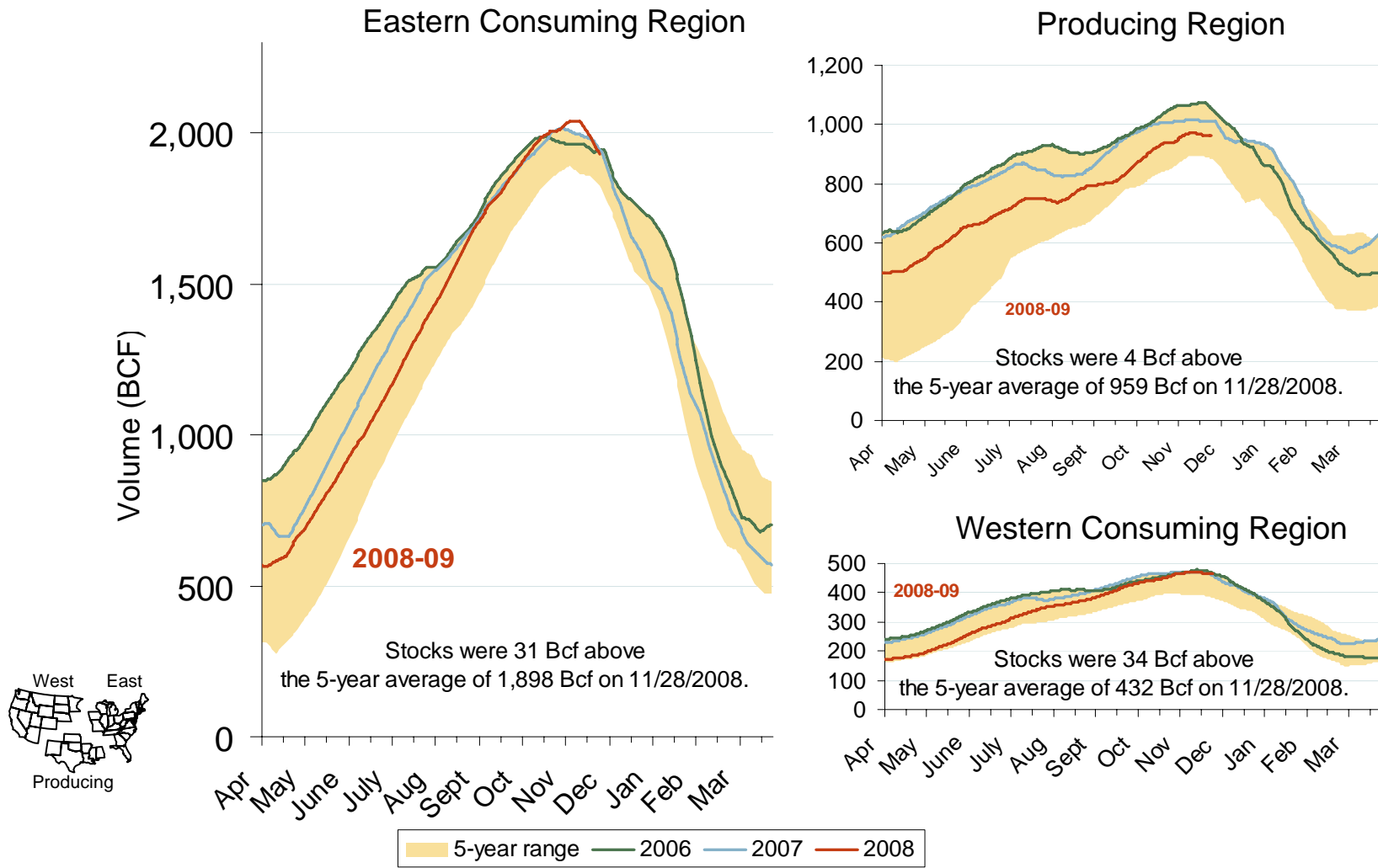


Source: Derived from EIA data.

Updated December 5, 2008

2003

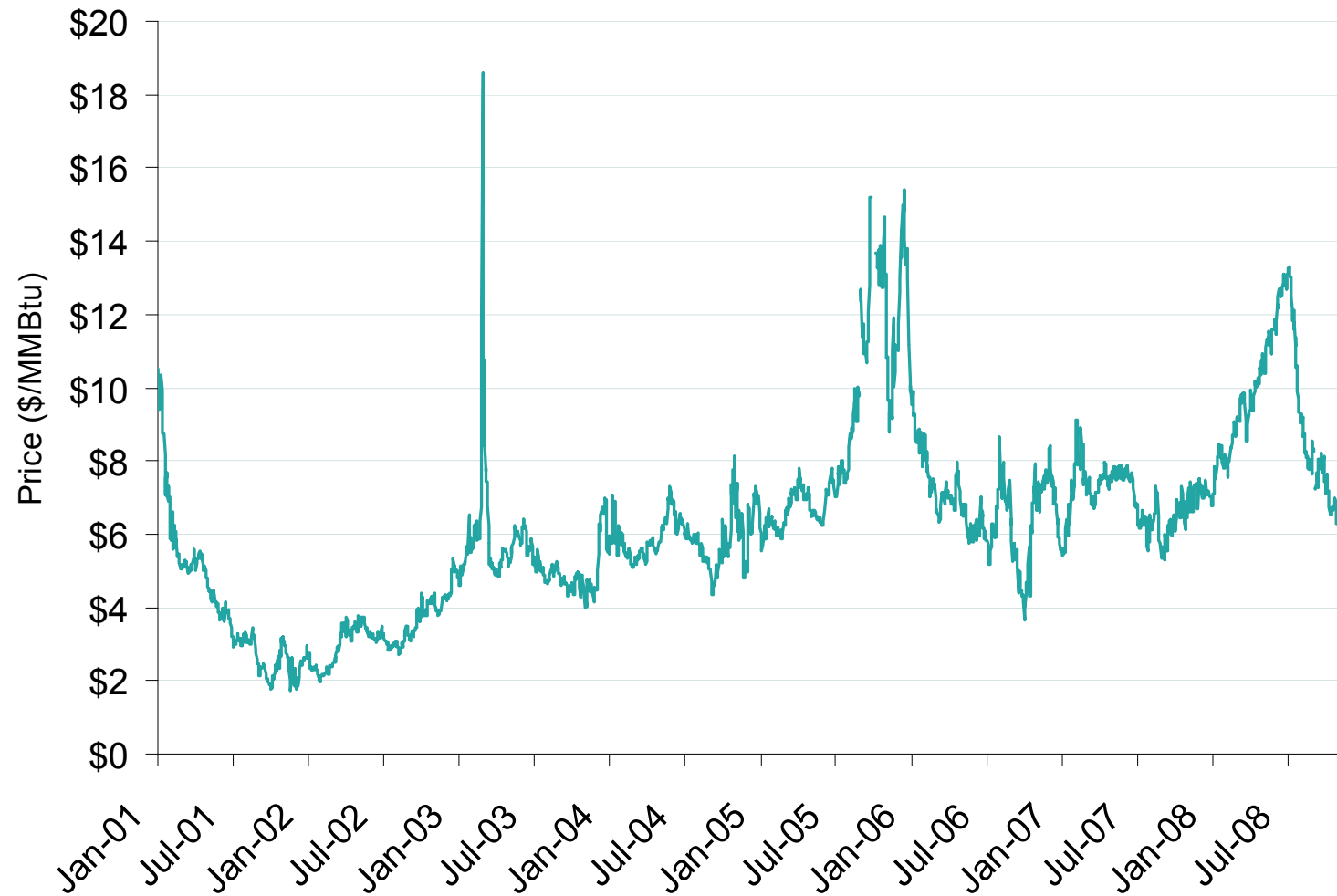
Regional Totals of Working Gas in Storage



Source: Derived from EIA data.

Updated December 5, 2008

Henry Hub Natural Gas Daily Spot Prices 2001-2008

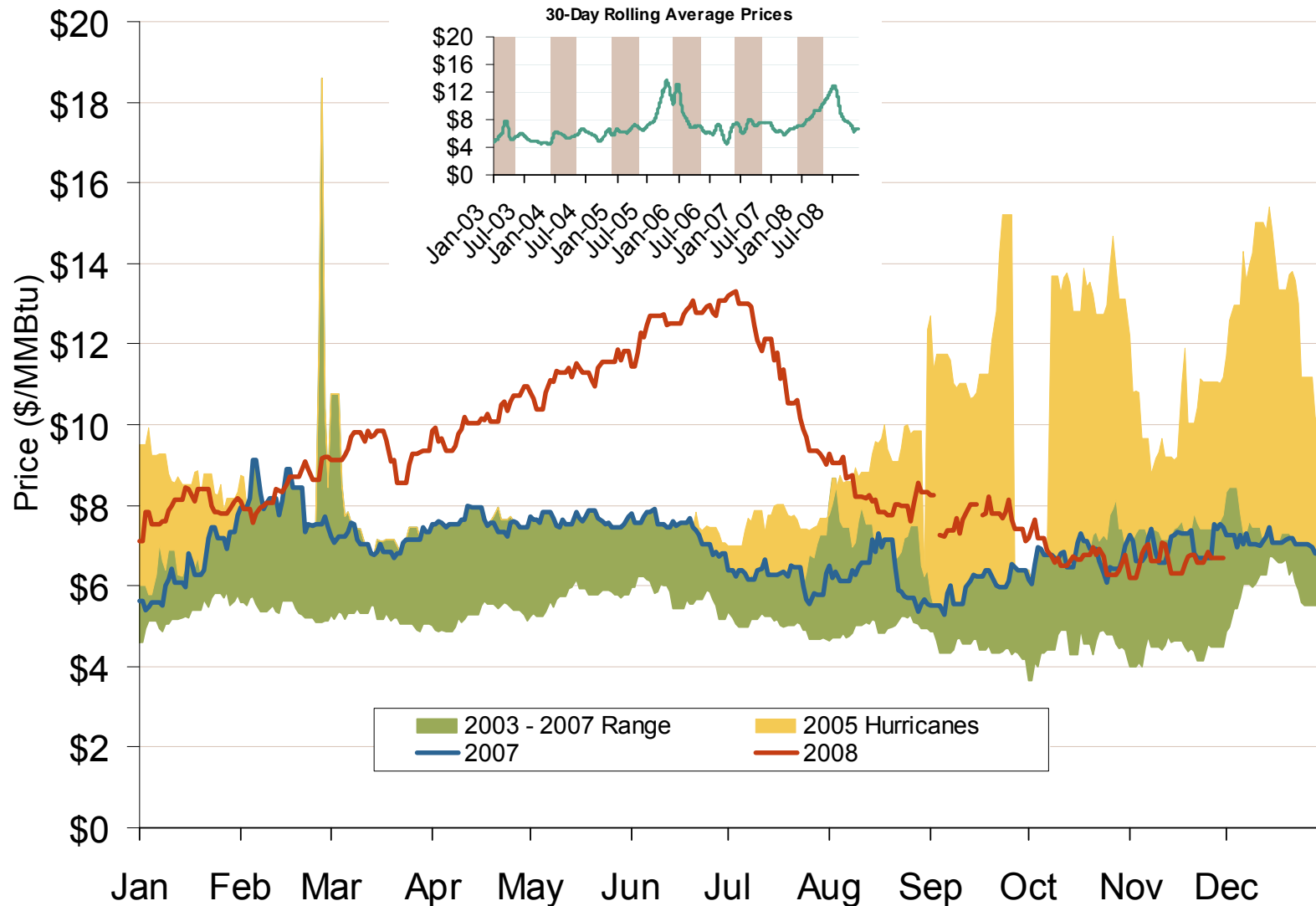


Source: Derived from *Platts* data.

Updated December 5, 2008 2001

Federal Energy Regulatory Commission • Market Oversight @ FERC.gov

Henry Hub Natural Gas Daily Spot Prices 2007, 2008 and 2003-2007 Year Range

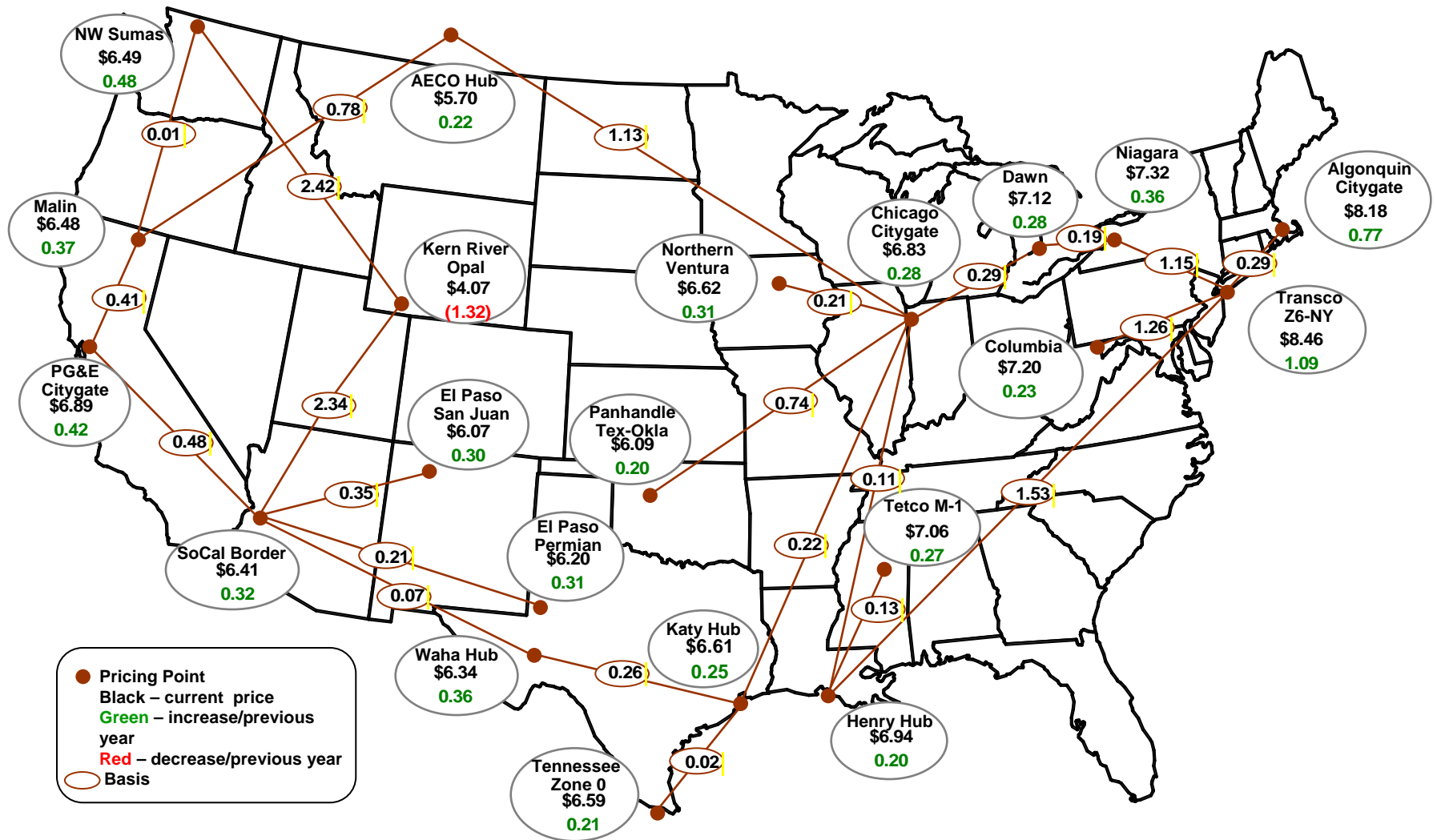


Source: Derived from *Platts* data.

Updated December 5, 2008

2085

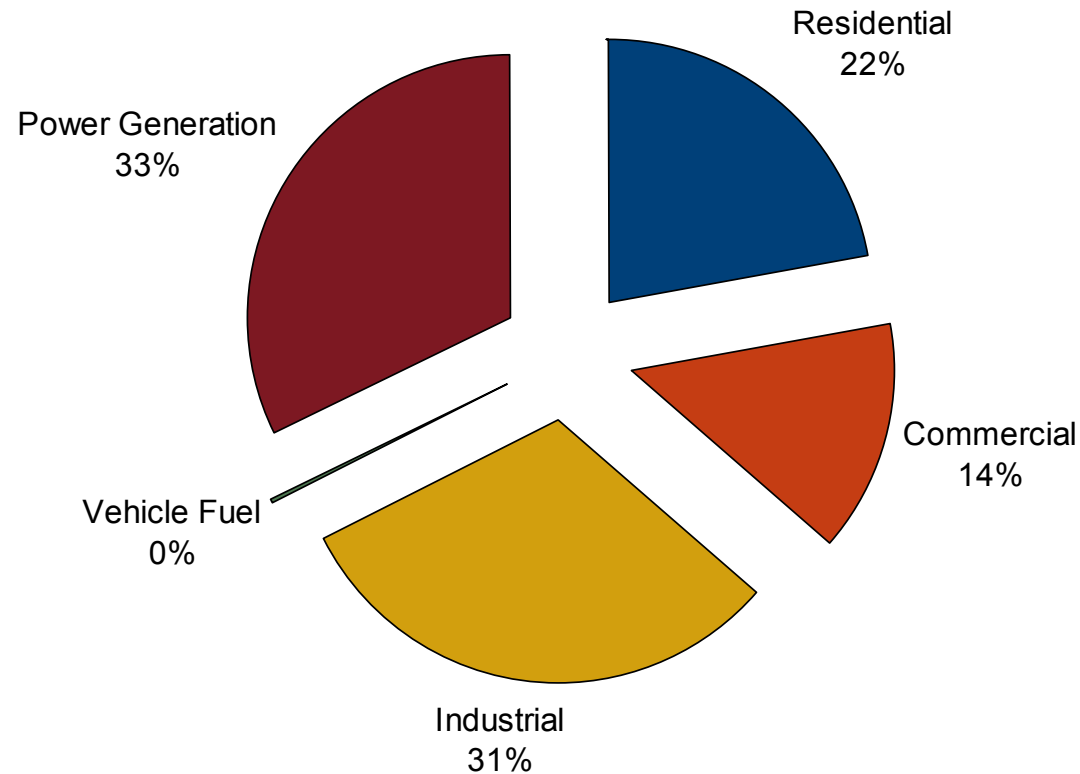
Average Spot Gas Prices, 2007



Source: Platts.

Updated September 17, 2008

U.S. Natural Gas Demand Shares by Sector in 2007

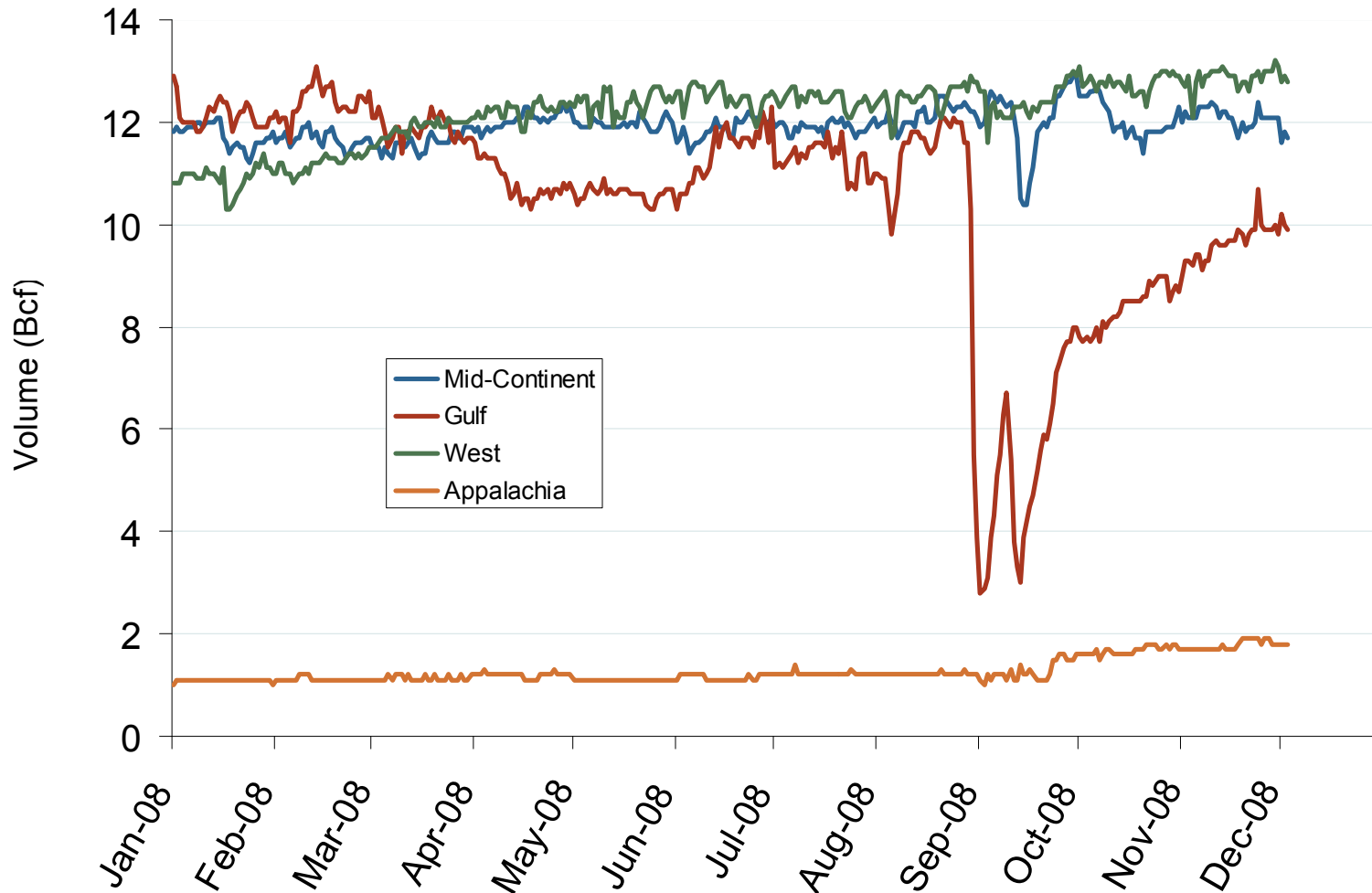


Source: Derived from EIA data.

Updated December 5, 2008

2002

Regional Natural Gas Production for 2008

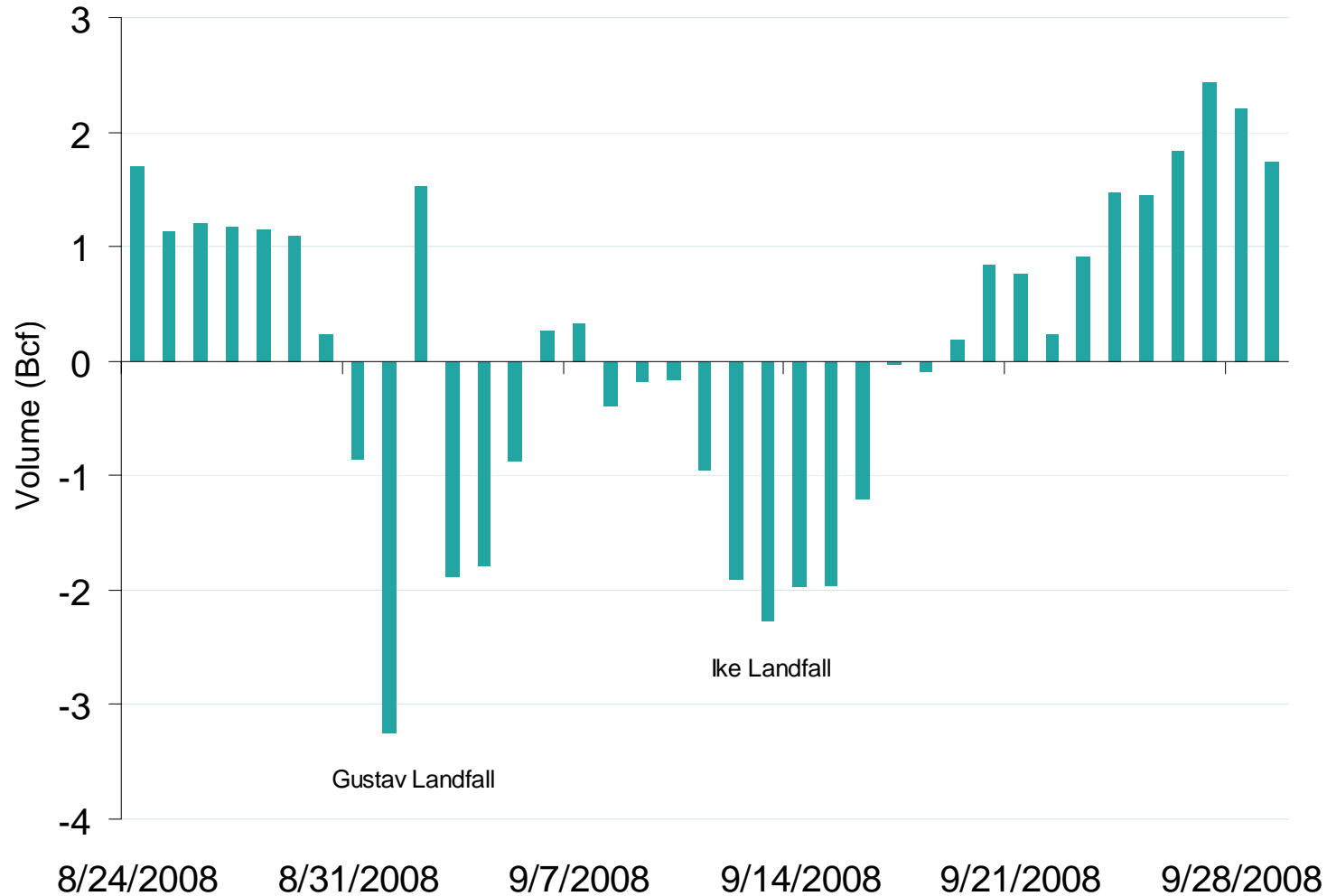


Source: Derived from *Bentek* data.

Updated December 5, 2008

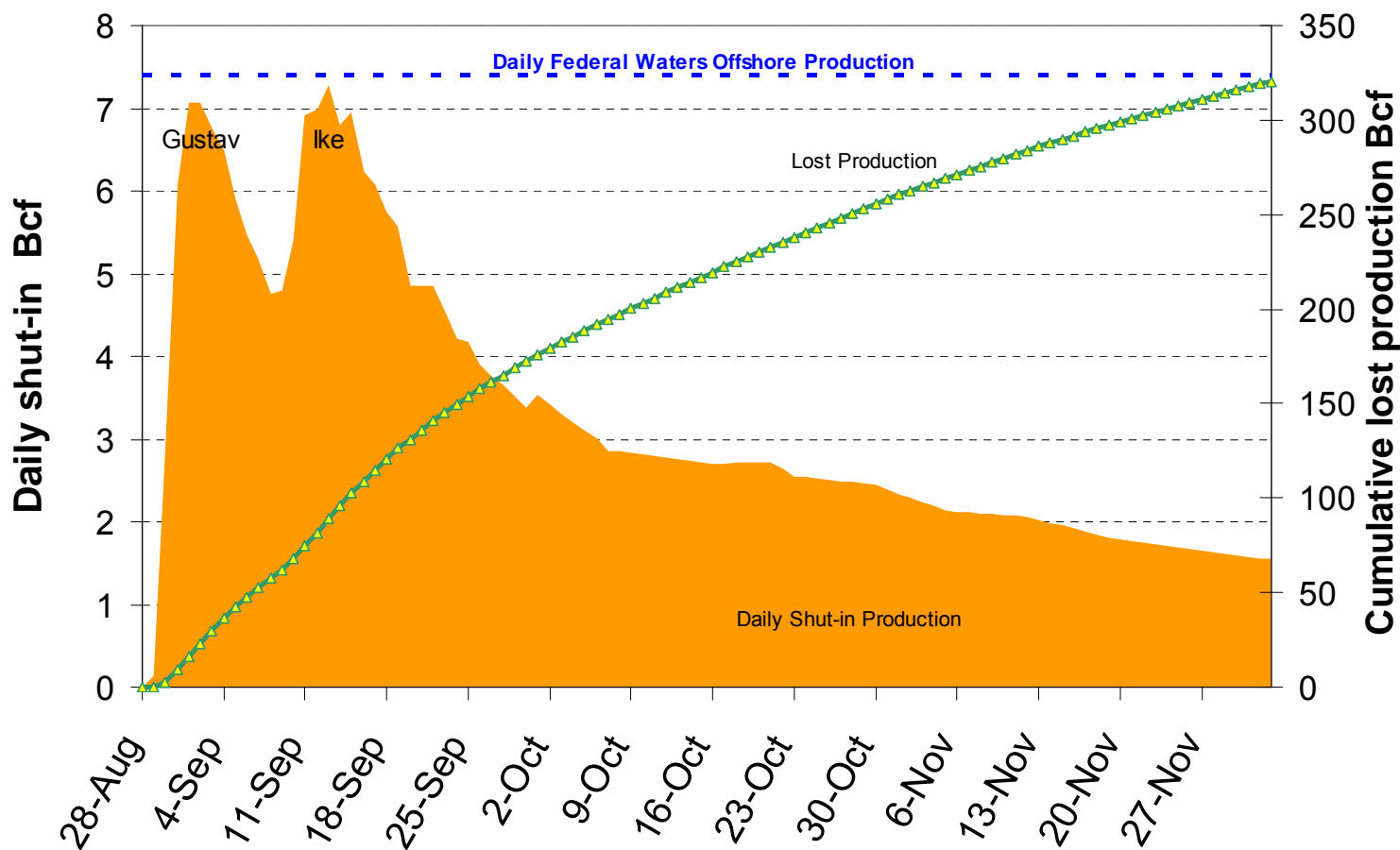
2182

Producing Region Storage Injections During Recent Hurricanes



Source: Derived from *Bentek* data.

OCS Daily Shut-in and Cumulative Lost Natural Gas Production- Gustav/Ike

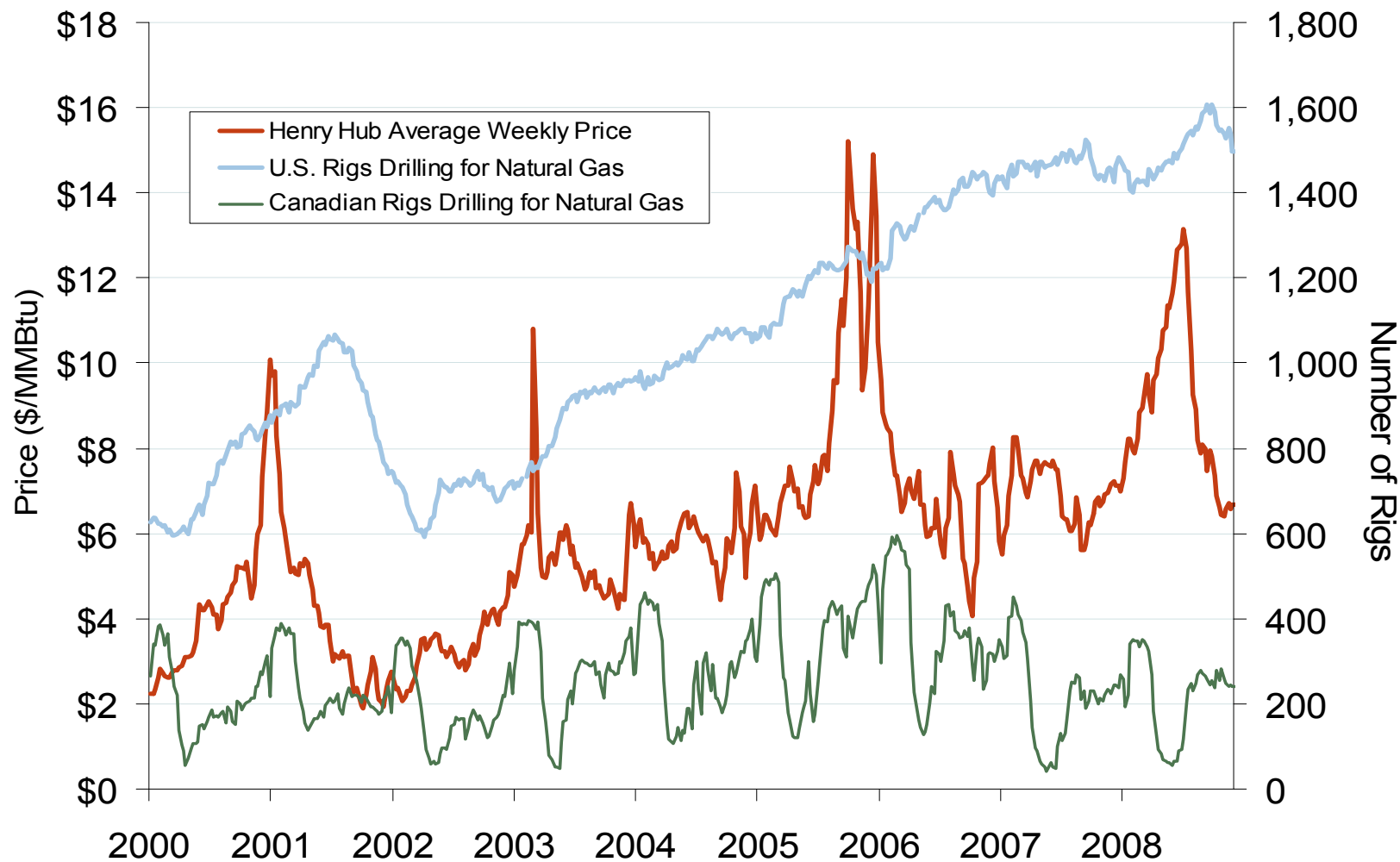


Source: Derived from *Minerals Management Service* data.

Updated December 5, 2008

2184

U.S. and Canadian Natural Gas Drilling Rig Count and Daily Spot Prices

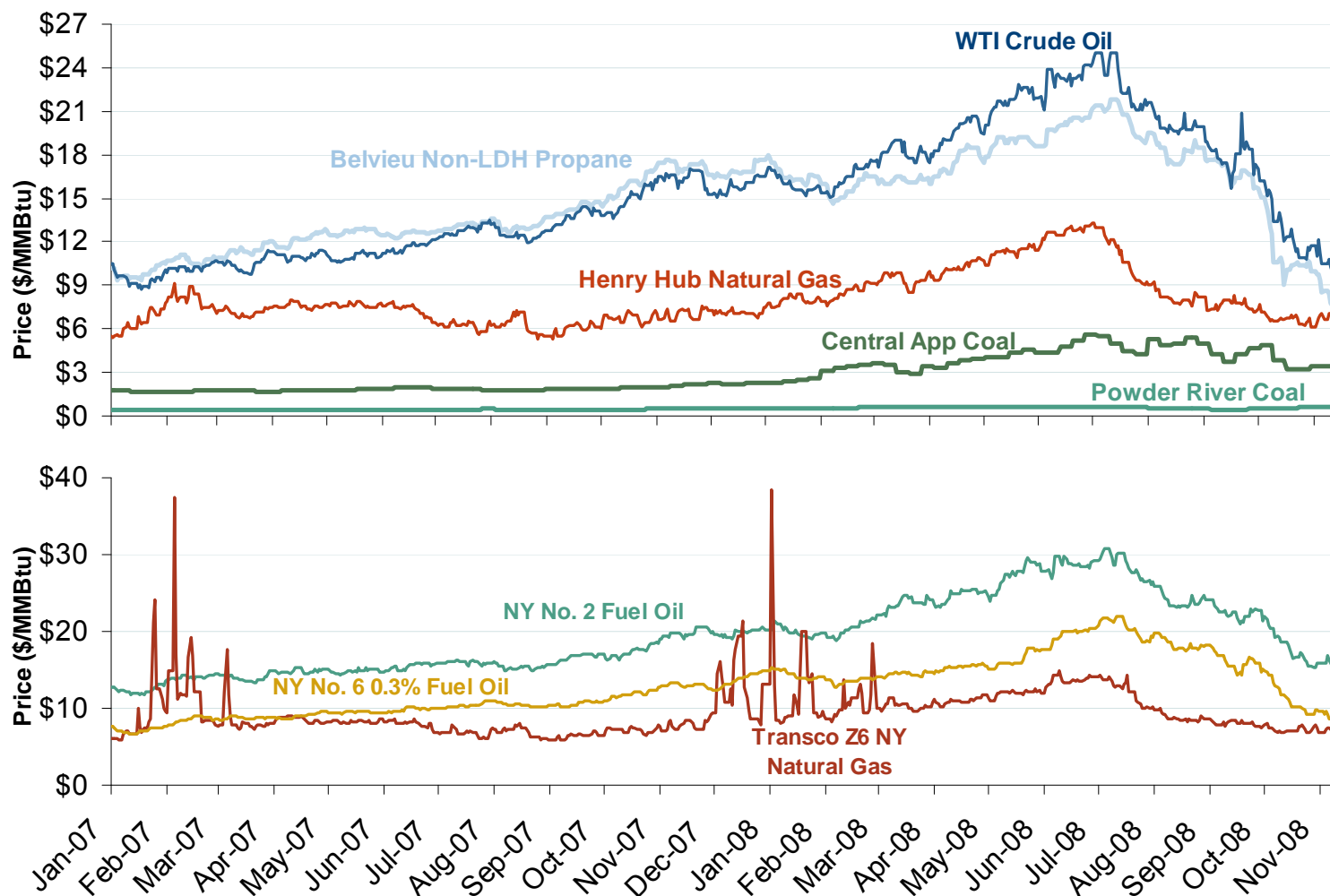


Source: Derived from *Platts* and *Baker Hughes* data.

Updated December 5, 2008

2007

Oil, Coal and Natural Gas Daily Spot Prices

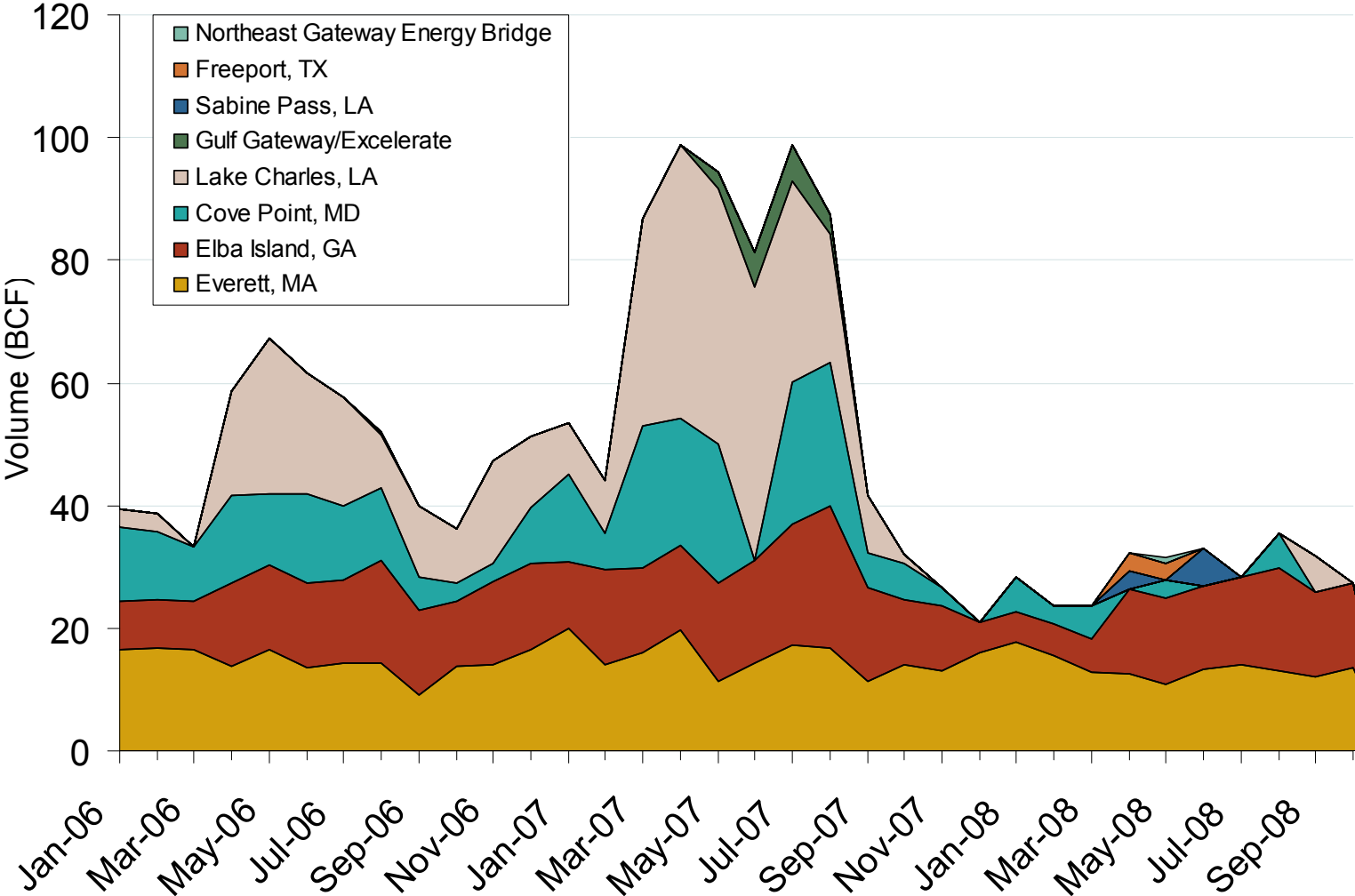


Source: Derived from ICE and Bloomberg data.

Note: Coal prices are quoted in \$/ton. Conversion factors to \$/MMBtu are based on contract specifications of 12,000 btus/pound for Central Appalachian coal and 8800 btus/pound for Powder River Basin coal.

Updated December 5, 2008₂₁₆₀

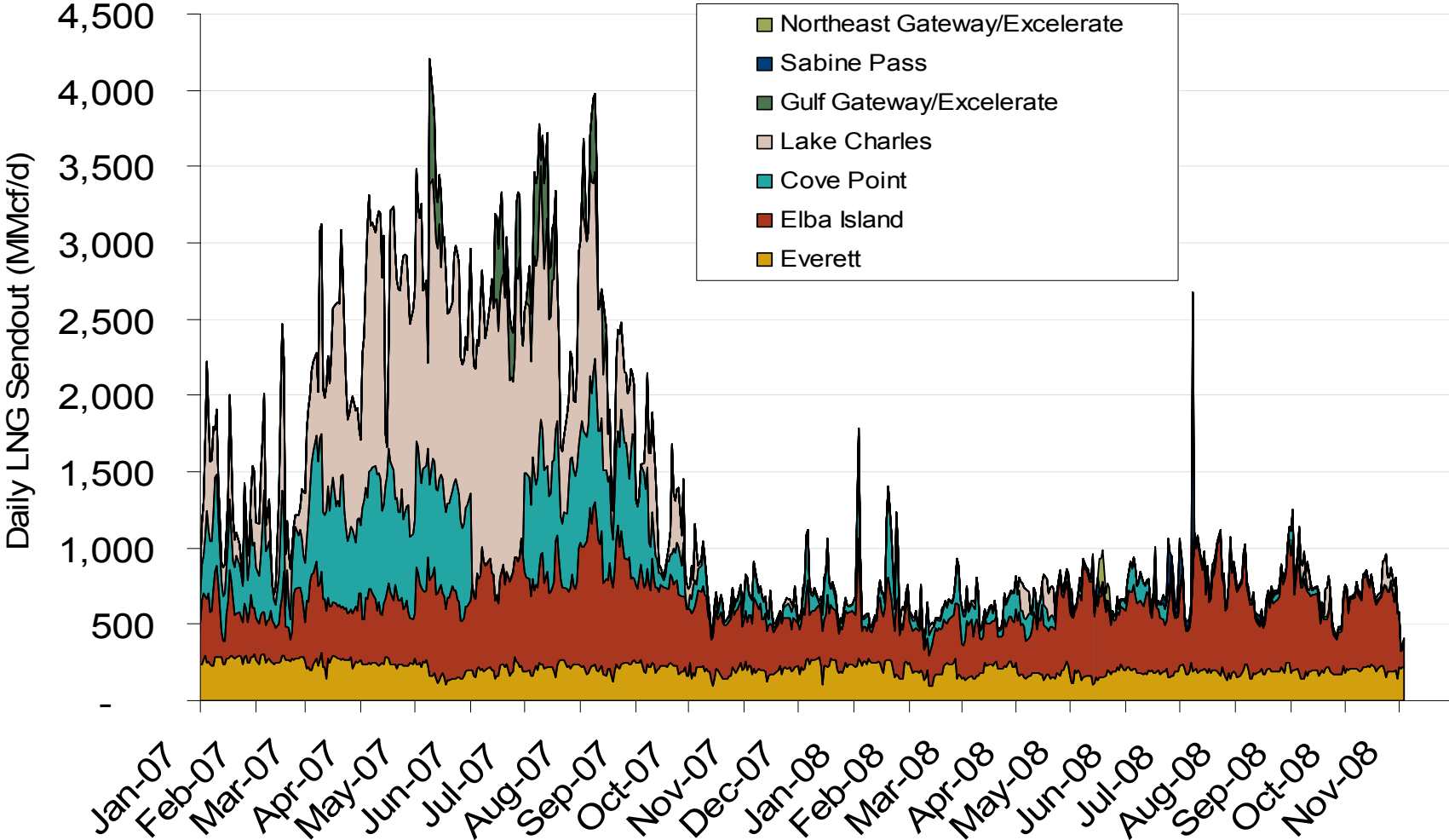
Monthly Gas Imports at Existing U.S. LNG Facilities



Source: Derived from DOE Office of Fossil Energy data.

Updated December 5, 2008

Daily Gas Sendout from Existing LNG Facilities



Source: Derived from *Bentek* data. Excludes Everett LNG delivered via truck and consumed by the Mystic plant as well as Freeport LNG which flows via intrastate pipelines.

World LNG Estimated December 2008 Landed Prices

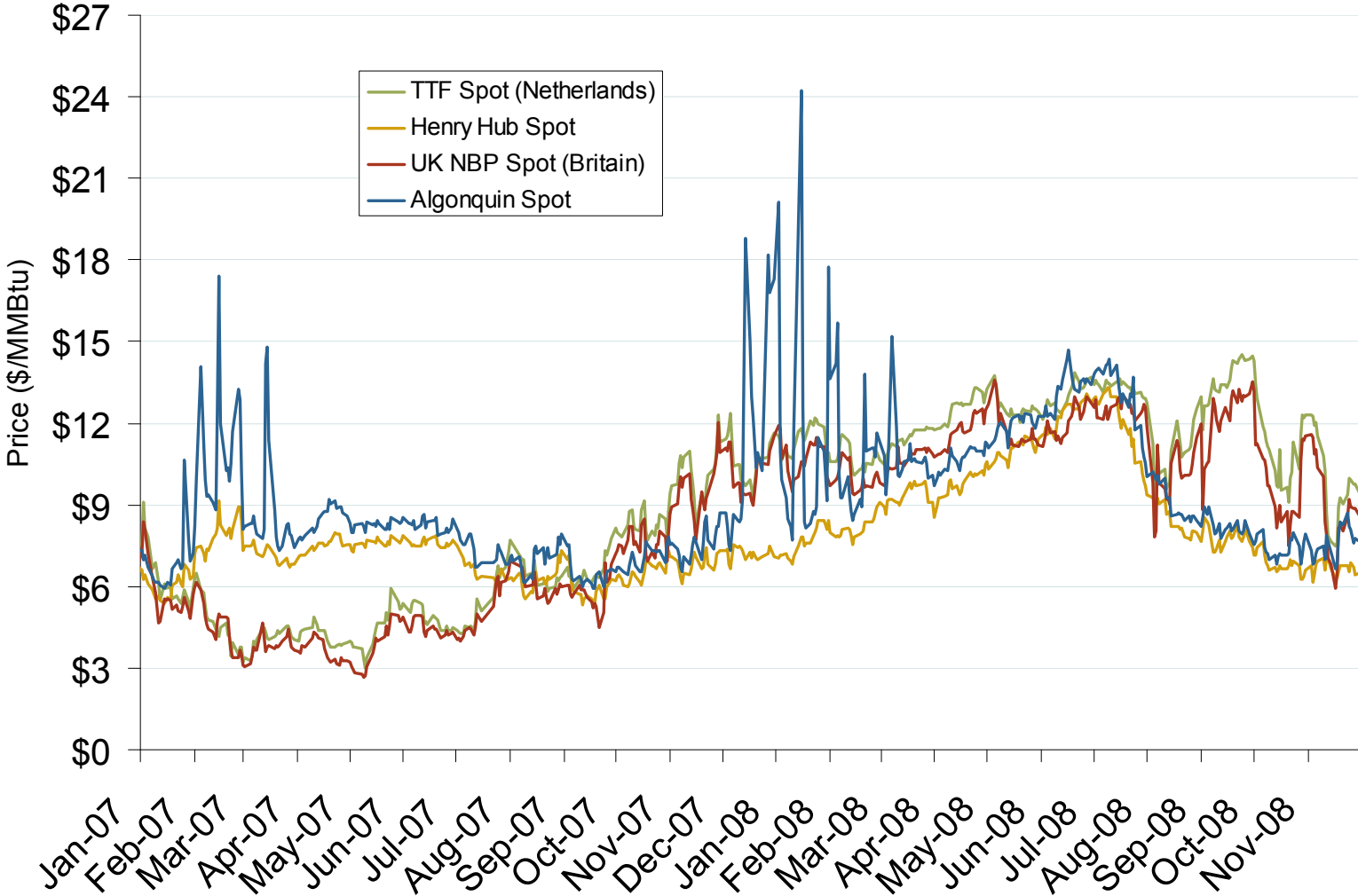


Source: *Waterborne Energy, Inc.* Data in \$US/MMBtu.

Updated November 7, 2008

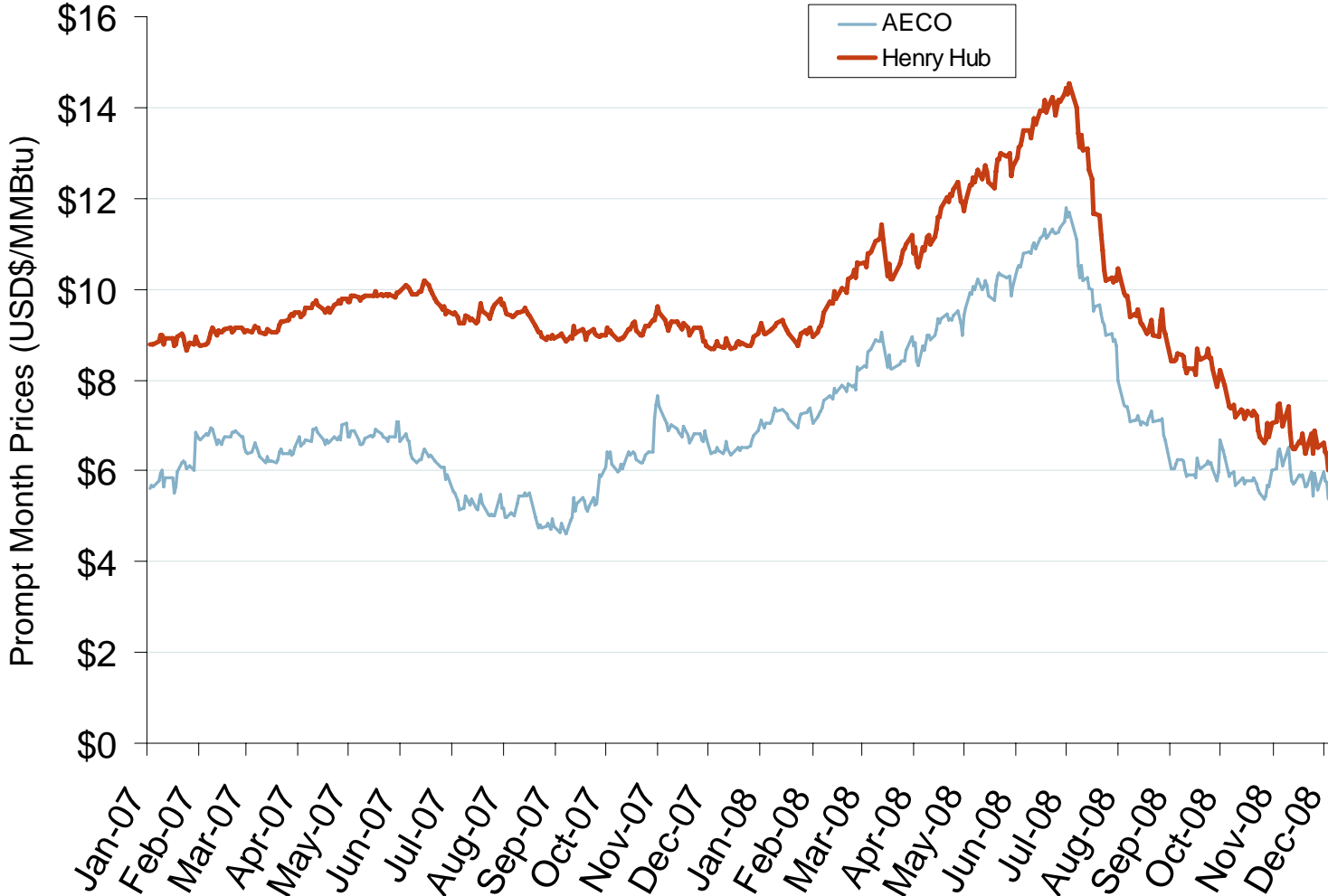
2169

Atlantic Basin European and US Spot Natural Gas Prices



Source: Derived from Bloomberg and ICE data.

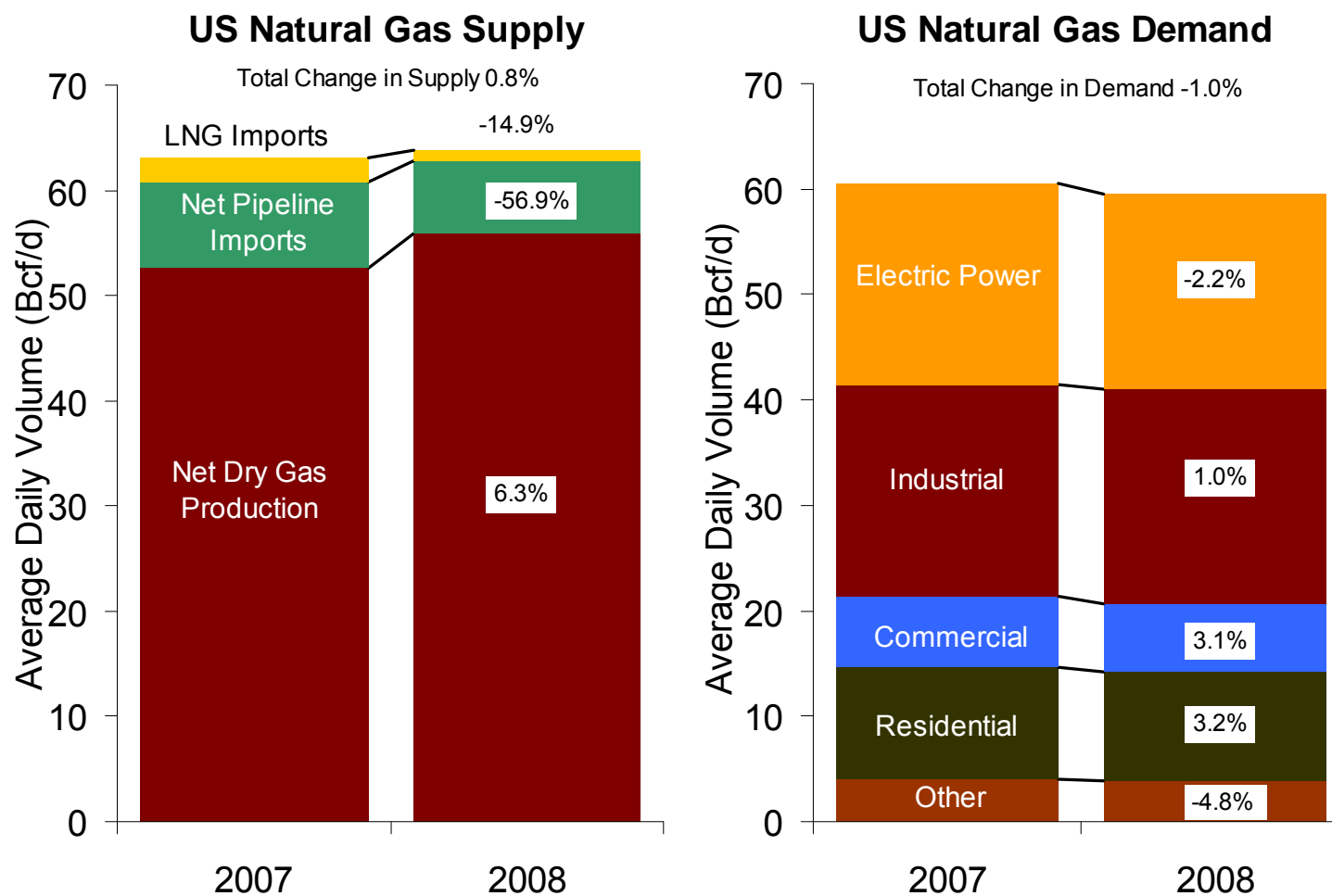
Henry Hub and AECO Prompt-Month Futures Prices



Source: Derived from ICE data.

Updated December 5, 2008

U.S. Natural Gas Supply and Consumption January-November 2008

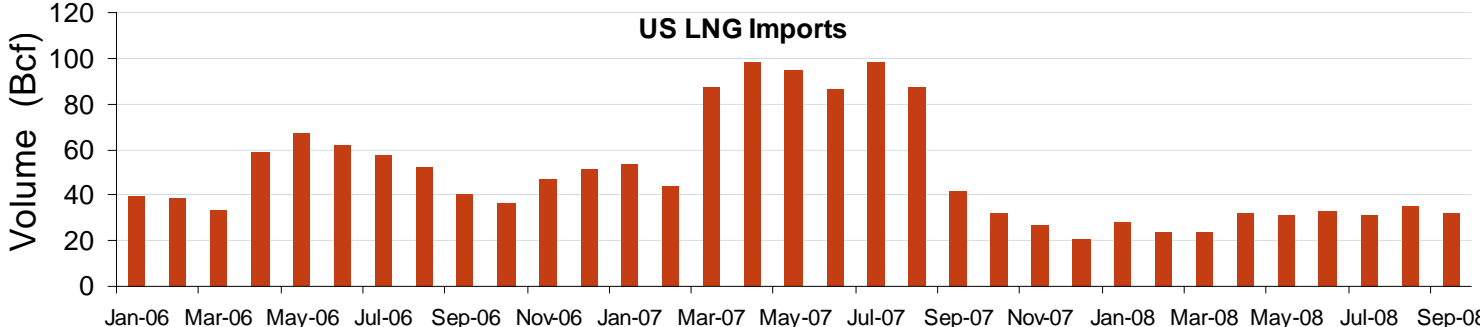
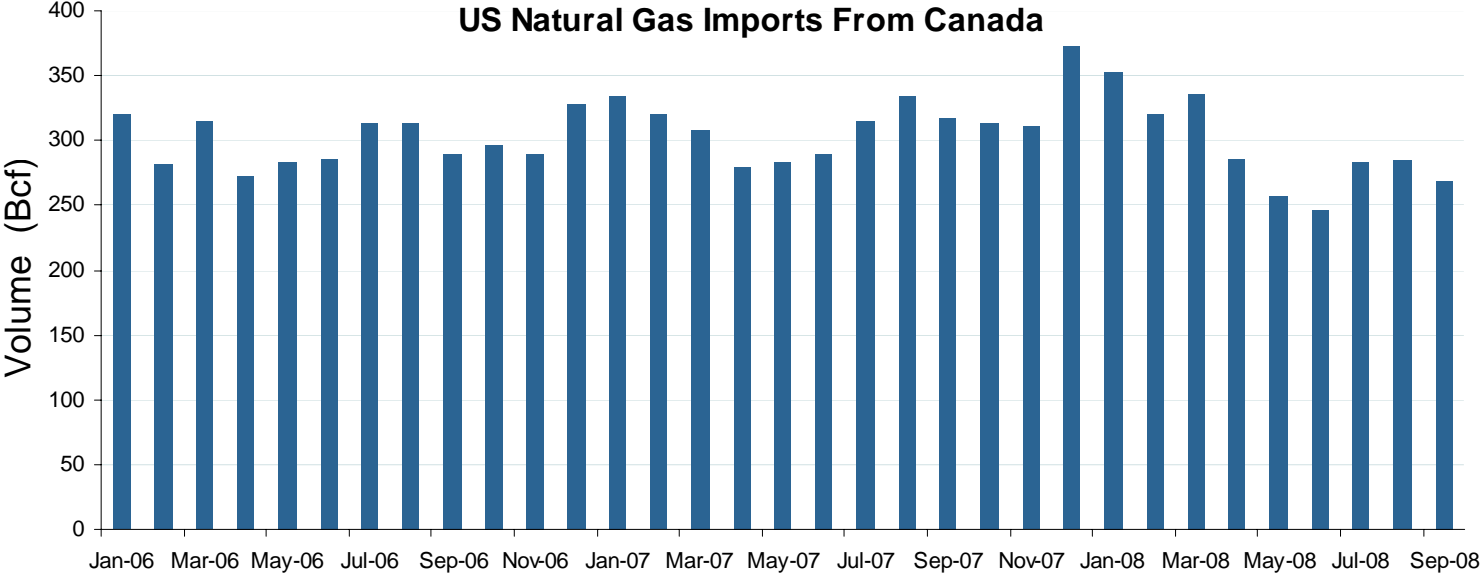


Source: Derived from EIA/STEO data.

Updated December 5, 2008

2163

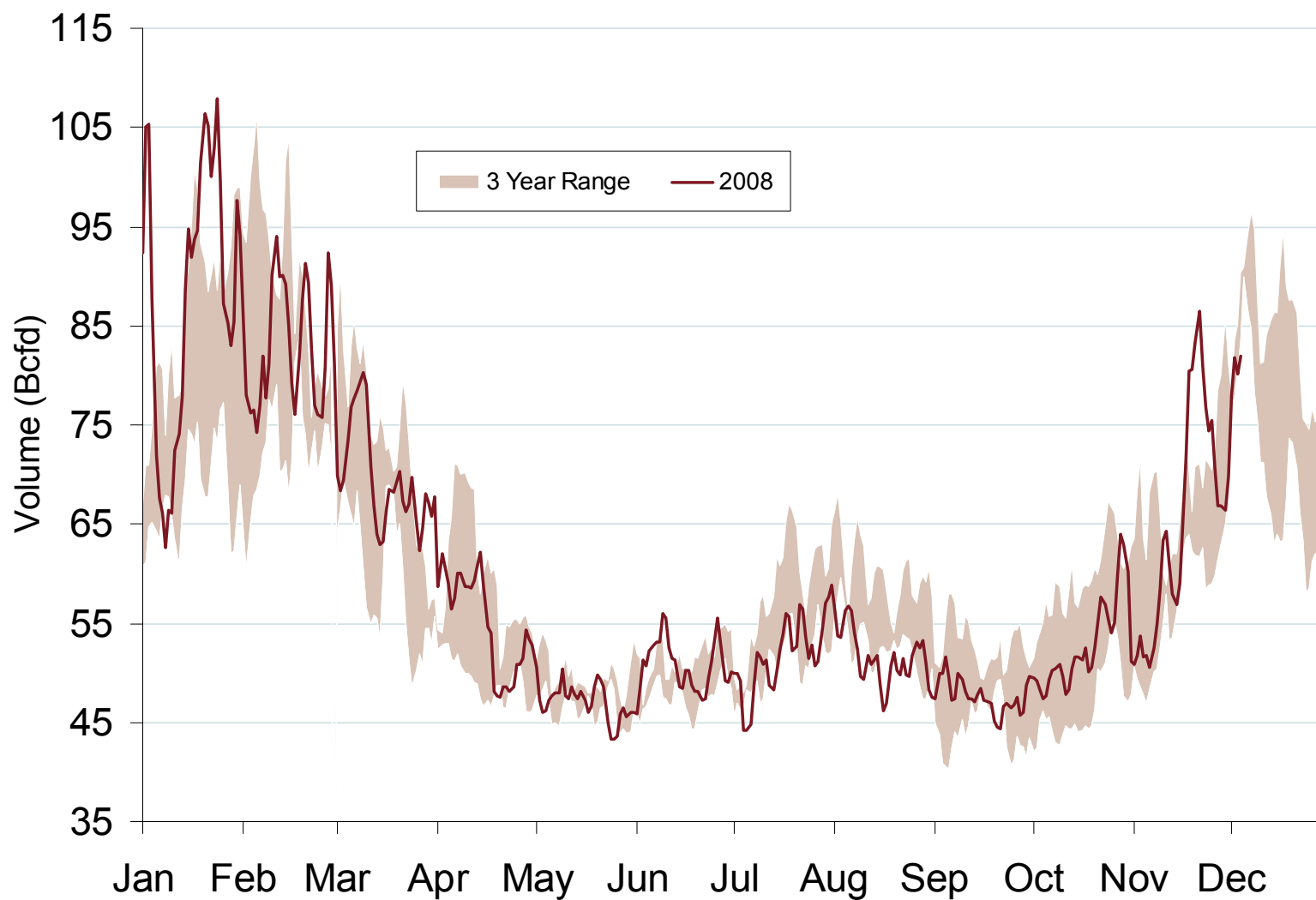
Canadian and LNG Natural Gas Imports



Source: EIA Natural Gas Monthly

Updated December 5, 2008

Total U.S. Natural Gas Demand (All Sectors)

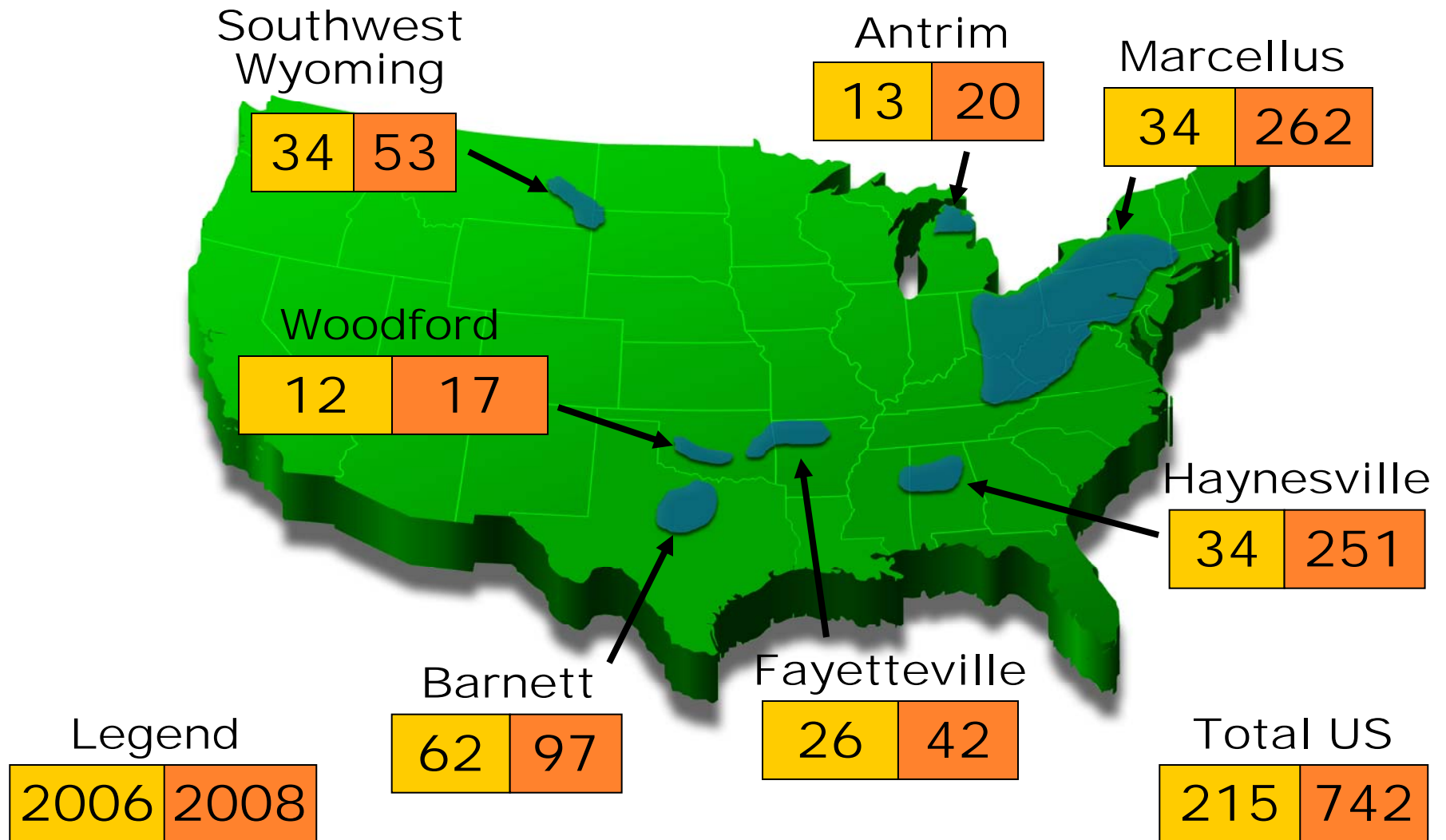


Source: Derived from *Bentek Energy* data.

Updated December 5, 2008

20009

Estimated Recoverable NG For Select Shale Basins (TCF)



Source: Derived From American Clean Skies Foundation

Updated November 18, 2008

20010