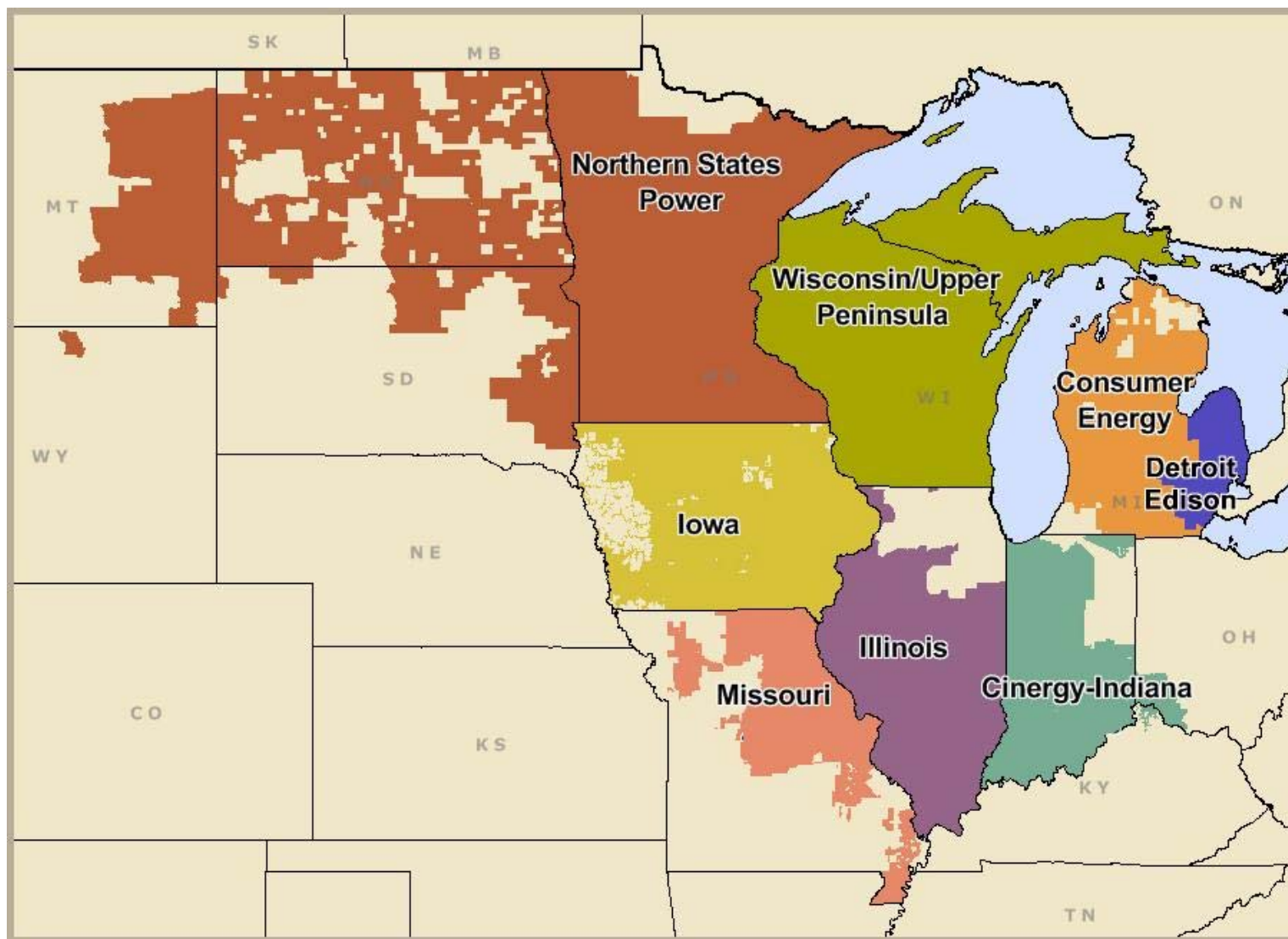


Midwest Independent System Operator (MISO)



Midwest Annual Average Bilateral Prices

Annual Average Day Ahead On Peak Prices (\$/MWh)						
	2008	2009	2010	2011	2012	5-Year Avg
Cinergy	\$66.88	\$34.65	\$41.51	\$41.17	\$34.70	\$43.79
Michigan Hub	\$69.15	\$36.56	\$43.68	\$42.73	\$36.17	\$45.67
Minnesota Hub	\$67.46	\$32.09	\$36.86	\$34.57	\$31.55	\$40.52
NI Hub	\$66.13	\$34.47	\$40.85	\$40.31	\$34.65	\$43.29
Illinois Hub	\$62.52	\$31.36	\$38.22	\$38.12	\$31.92	\$40.44
MAPP South	\$69.18	\$33.31	\$37.60	\$35.48	\$29.43	\$41.04

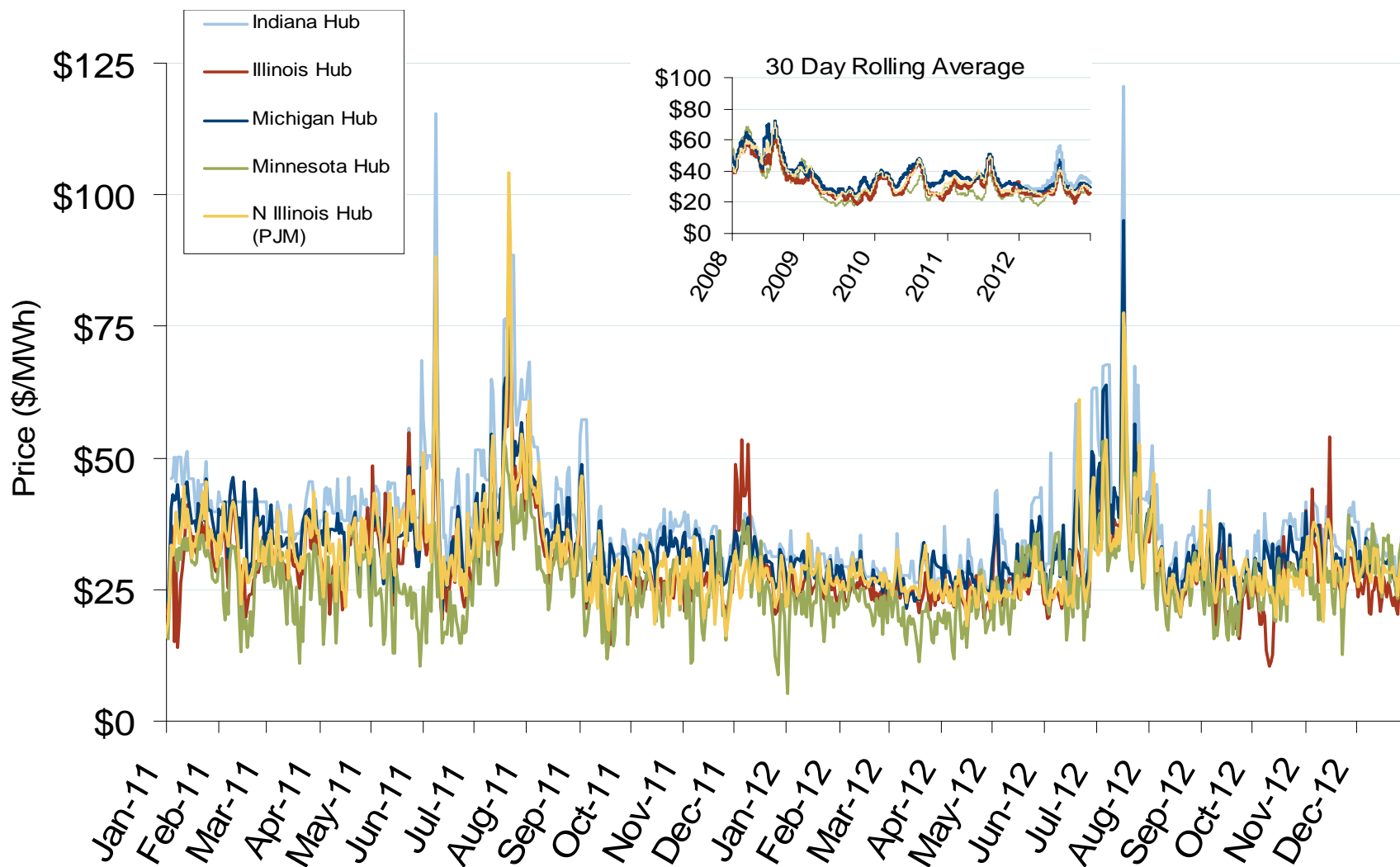
Midwest Electric Market: Last Month's RTO Prices

Federal Energy Regulatory Commission • Market Oversight • www.ferc.gov/oversight

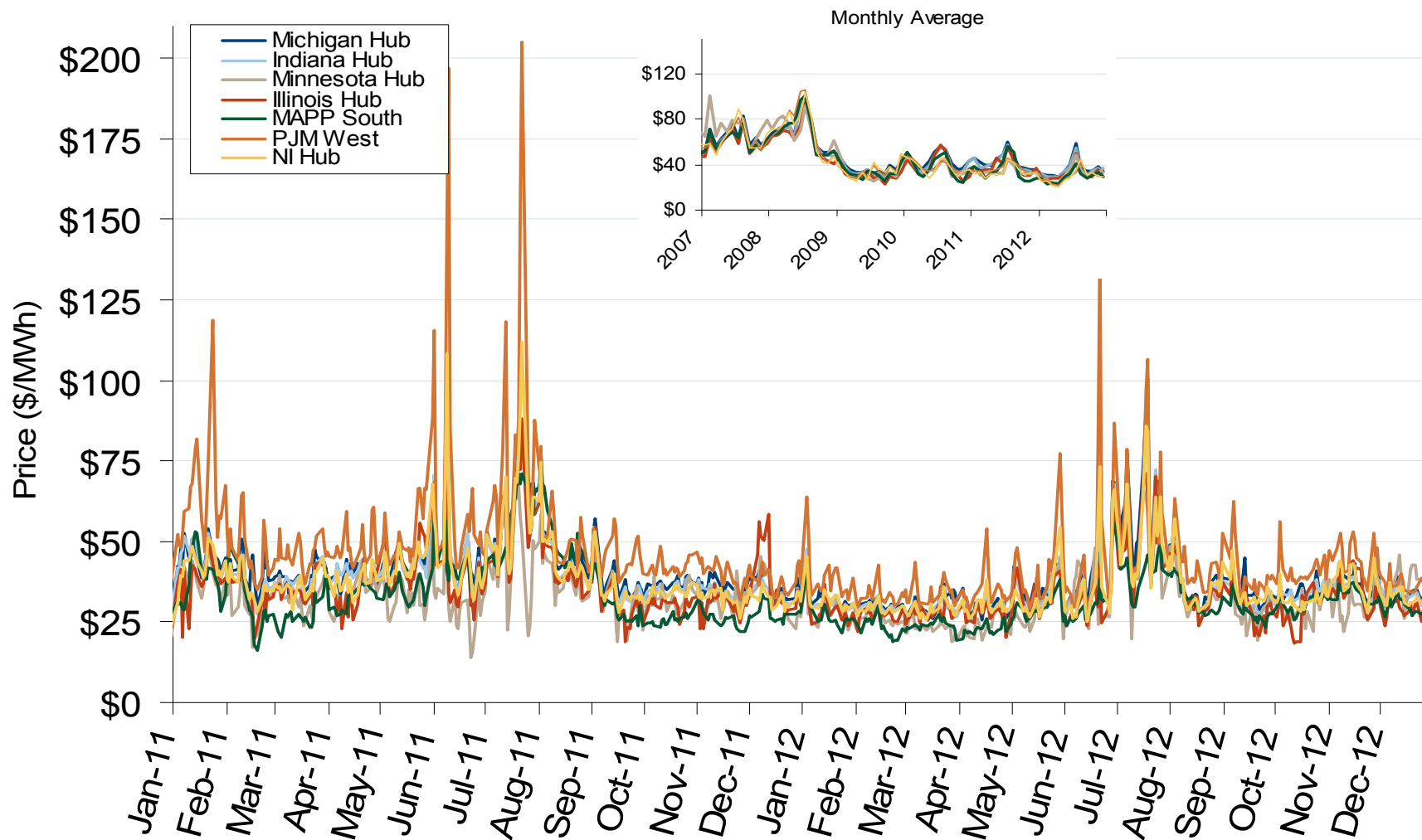
Daily Average of MISO Day-Ahead Prices - All Hours



Daily Average of MISO Day-Ahead Prices - All Hours



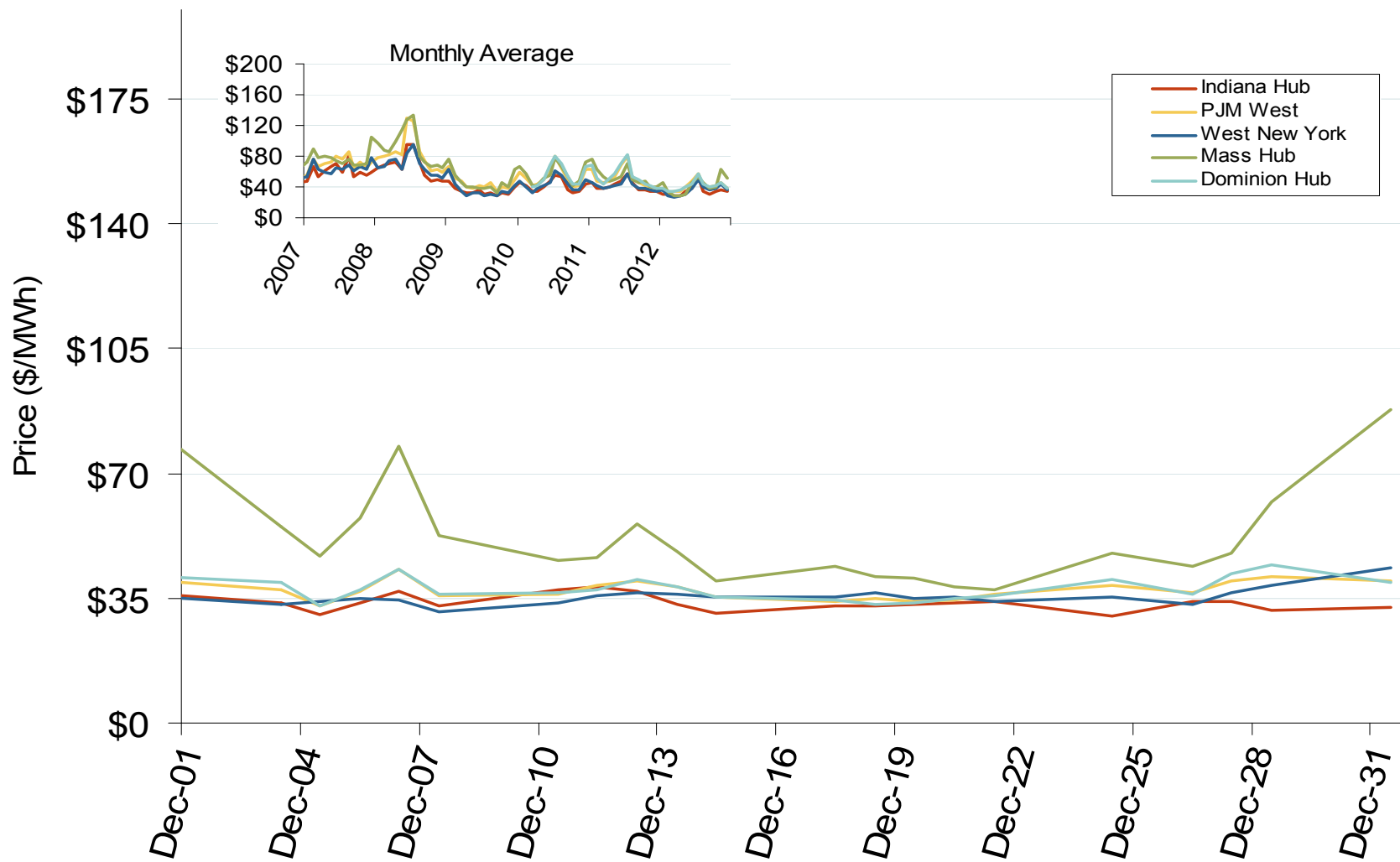
MISO/PJM Index Day-Ahead On-Peak Prices



Midwest Electric Market: Last Month's Eastern Index Prices

Federal Energy Regulatory Commission • Market Oversight • www.ferc.gov/oversight

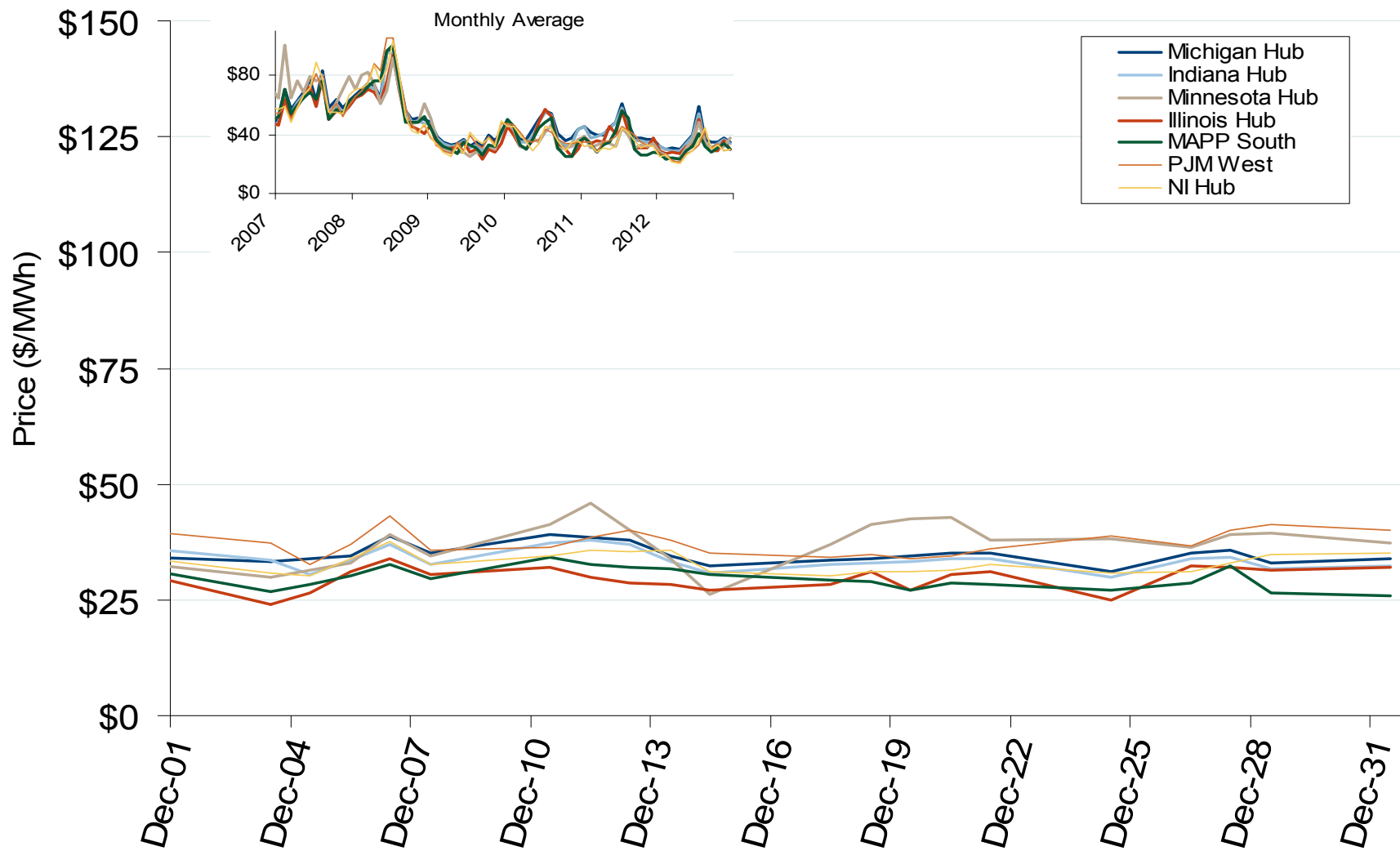
Eastern Daily Index Day-Ahead On-Peak Prices



Midwest Electric Market: Last Month's MISO/PJM Index Prices

Federal Energy Regulatory Commission • Market Oversight • www.ferc.gov/oversight

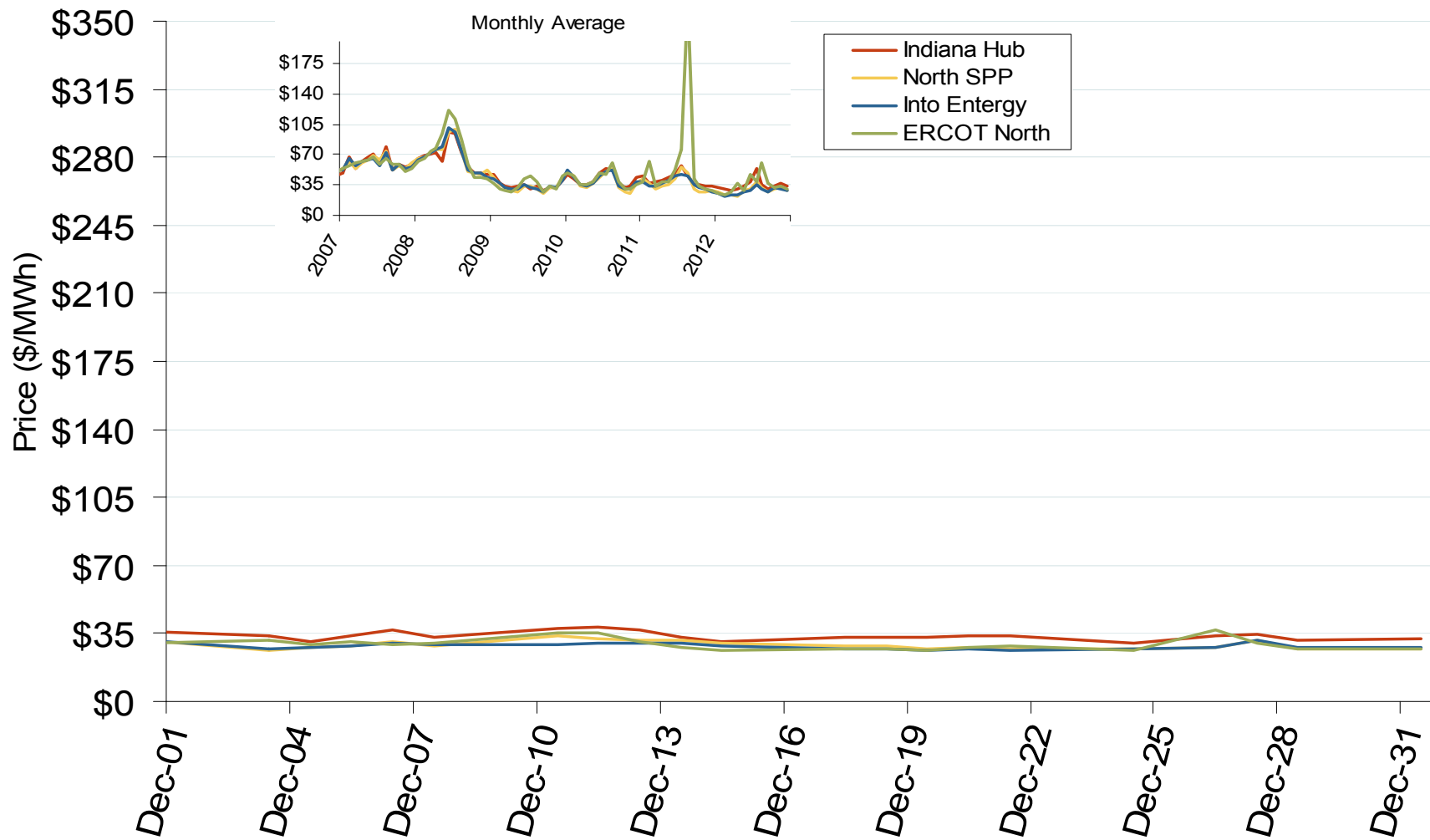
MISO/PJM Index Day-Ahead On-Peak Prices



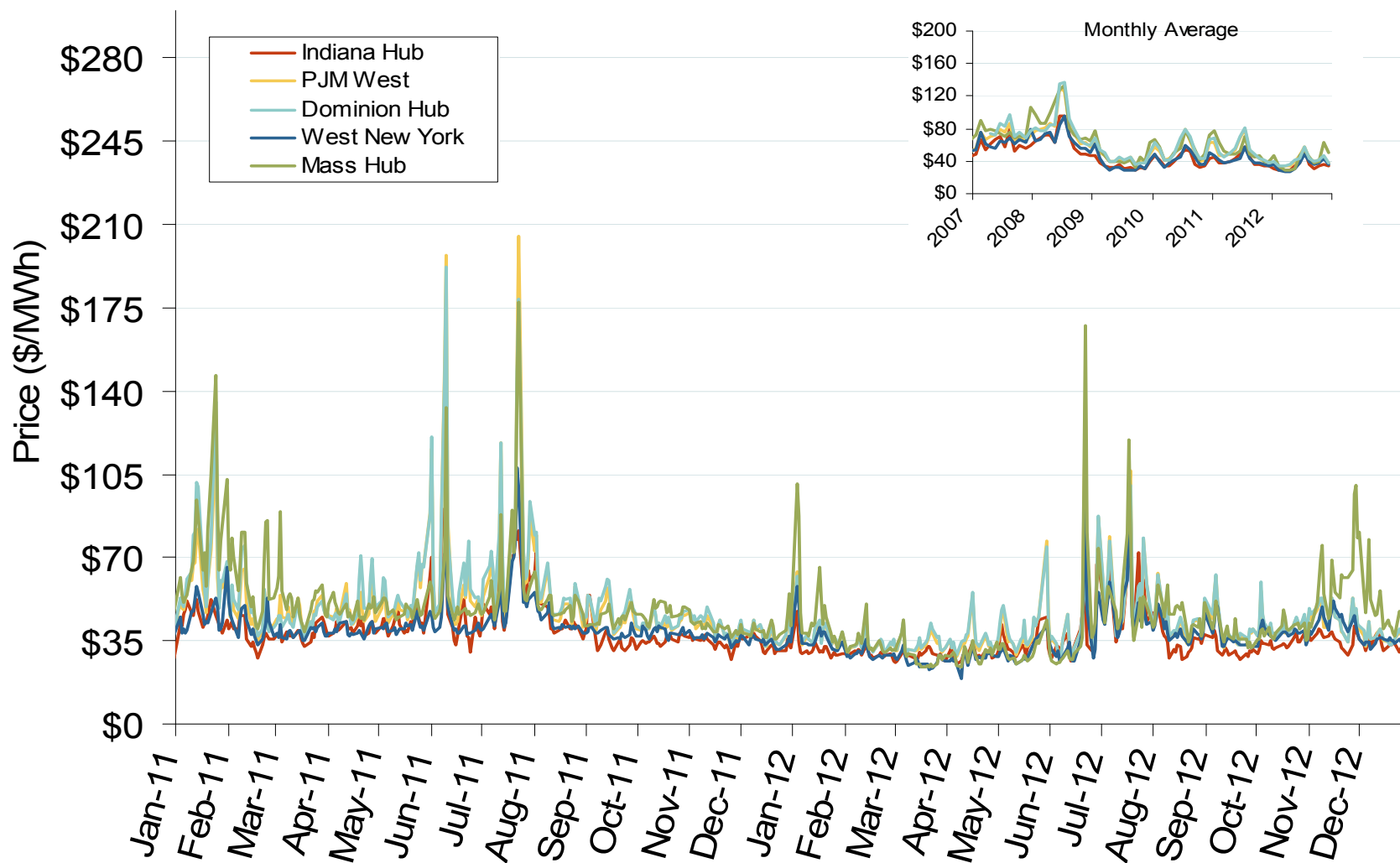
Midwest Electric Market: Last Month's Midwestern Index Prices

Federal Energy Regulatory Commission • Market Oversight • www.ferc.gov/oversight

Midwestern Daily Index Day-Ahead On-Peak Prices

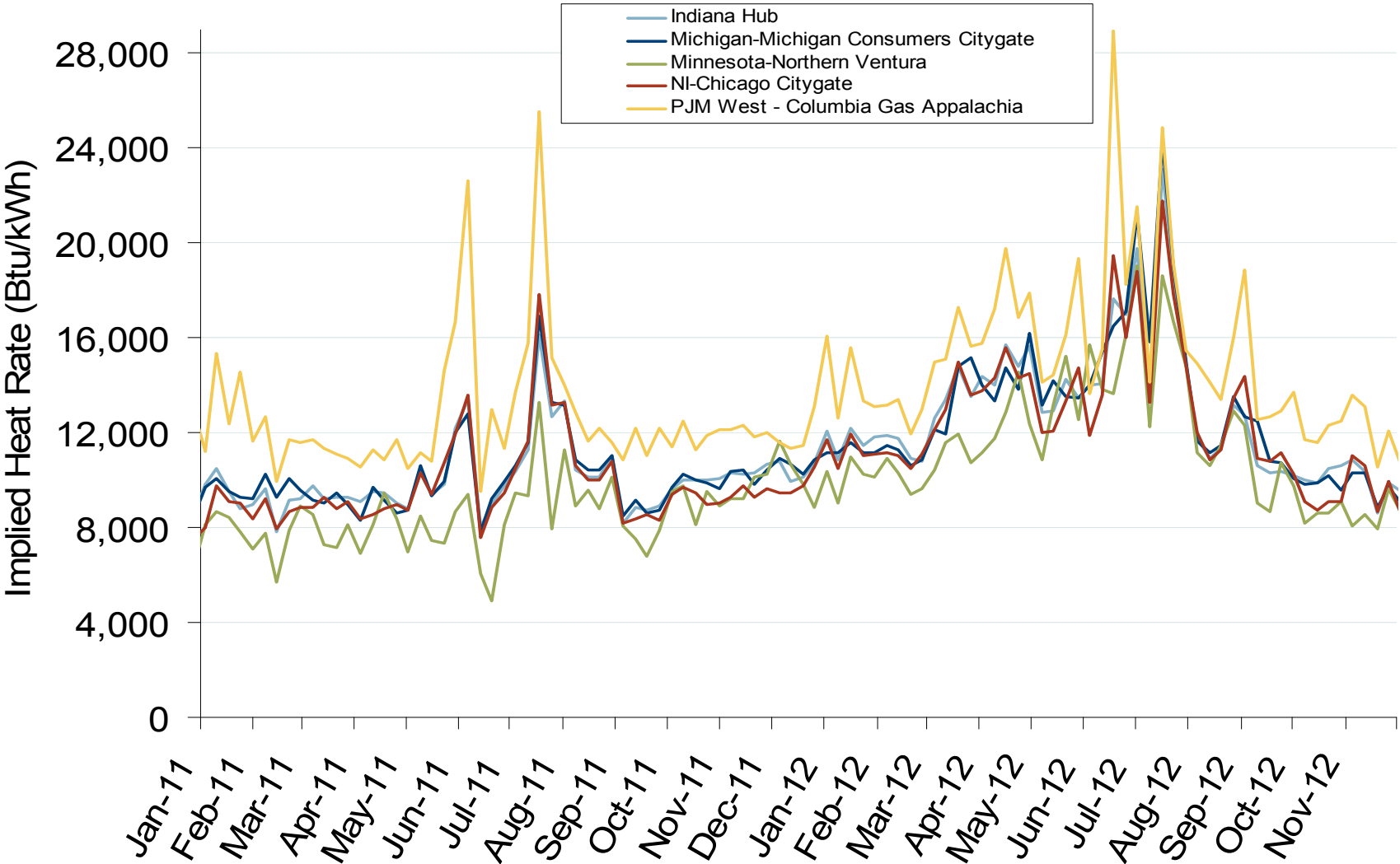


Eastern Daily Index Day-Ahead On-Peak Prices



Federal Energy Regulatory Commission • Market Oversight • www.ferc.gov/oversight

Implied Heat Rates at MISO and PJM Hubs - Weekly Averages

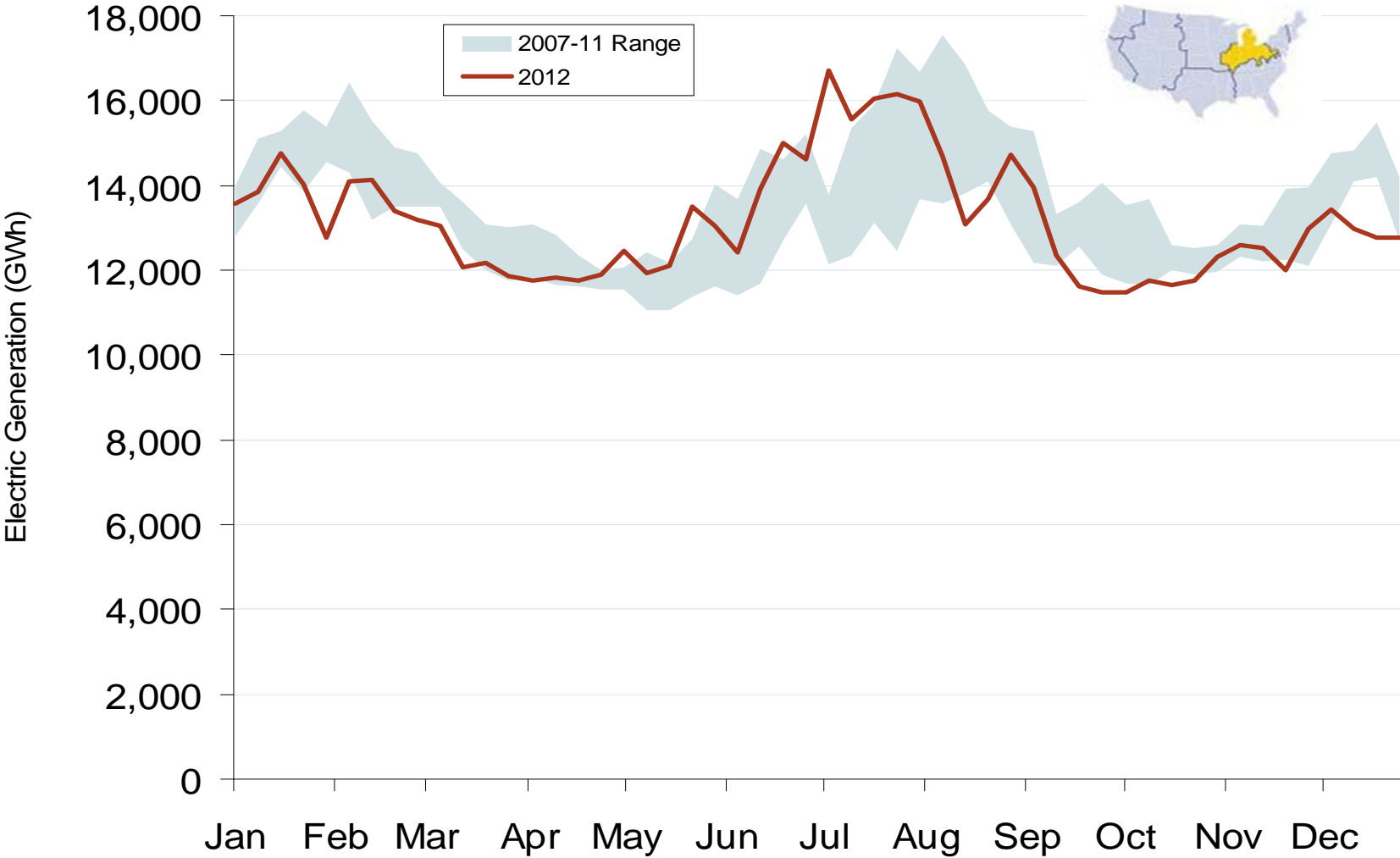


Source: Derived from Platts on-peak electric and natural gas price data
January 2013

Updated: January 15, 2013

Federal Energy Regulatory Commission • Market Oversight • www.ferc.gov/oversight

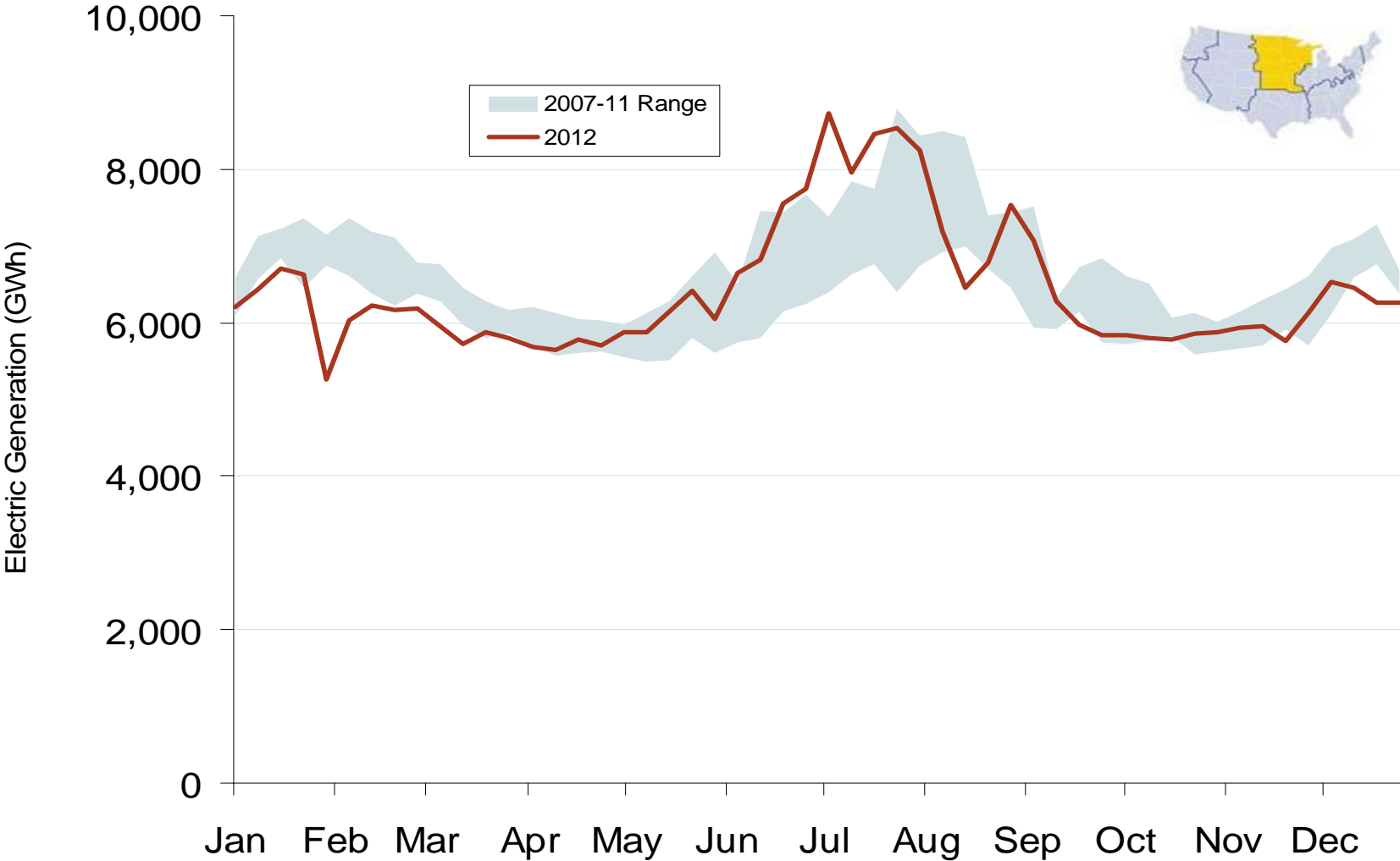
Weekly Generation Output - Central Industrial Region



Source: Derived from *EEI* data
January 2013

Updated: January 7, 2013

Weekly Generation Output - West Central



Source: Derived from *EEI* data
January 2013

Updated: January 7, 2013