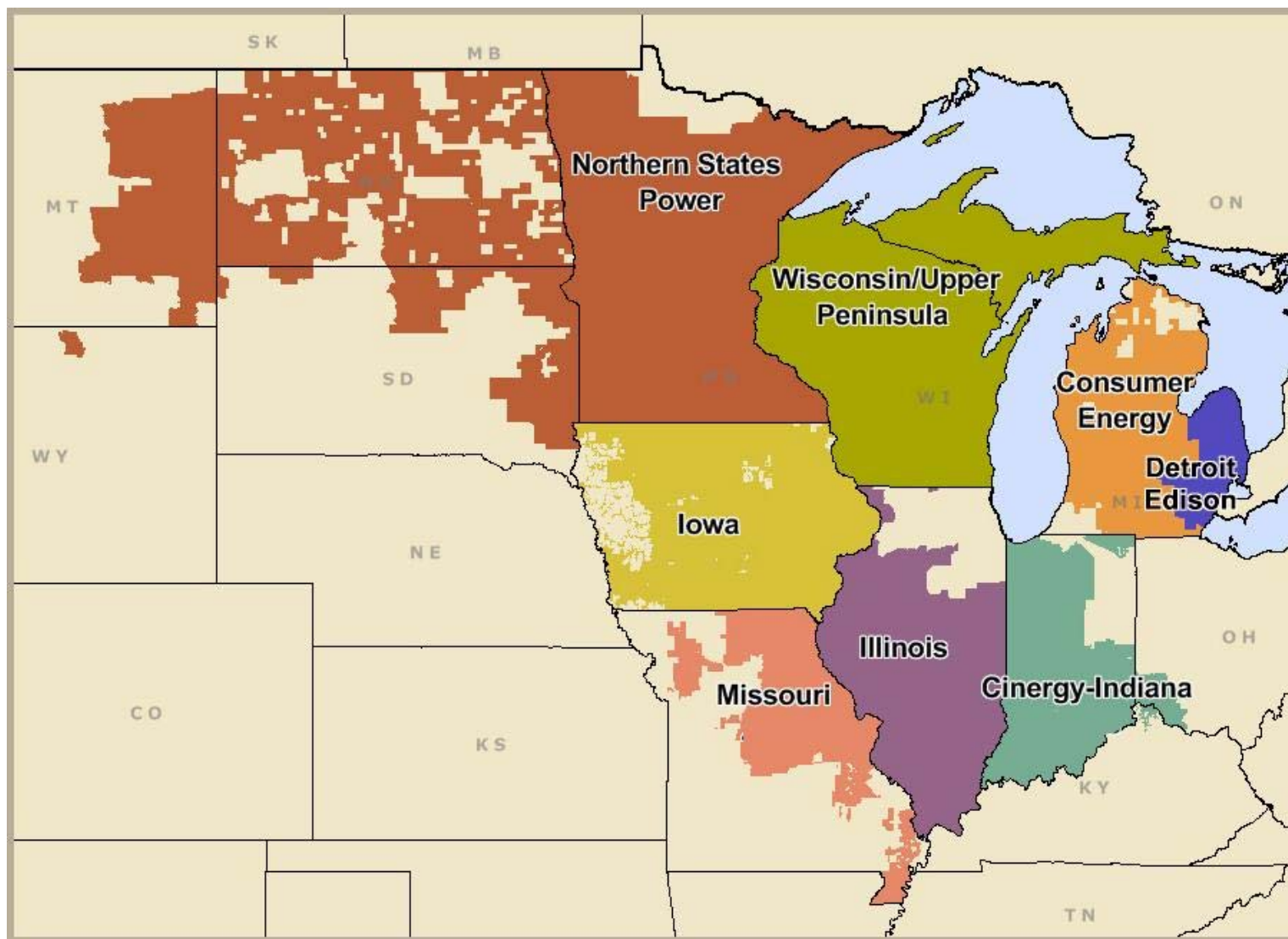


## Midwest Independent System Operator (MISO)



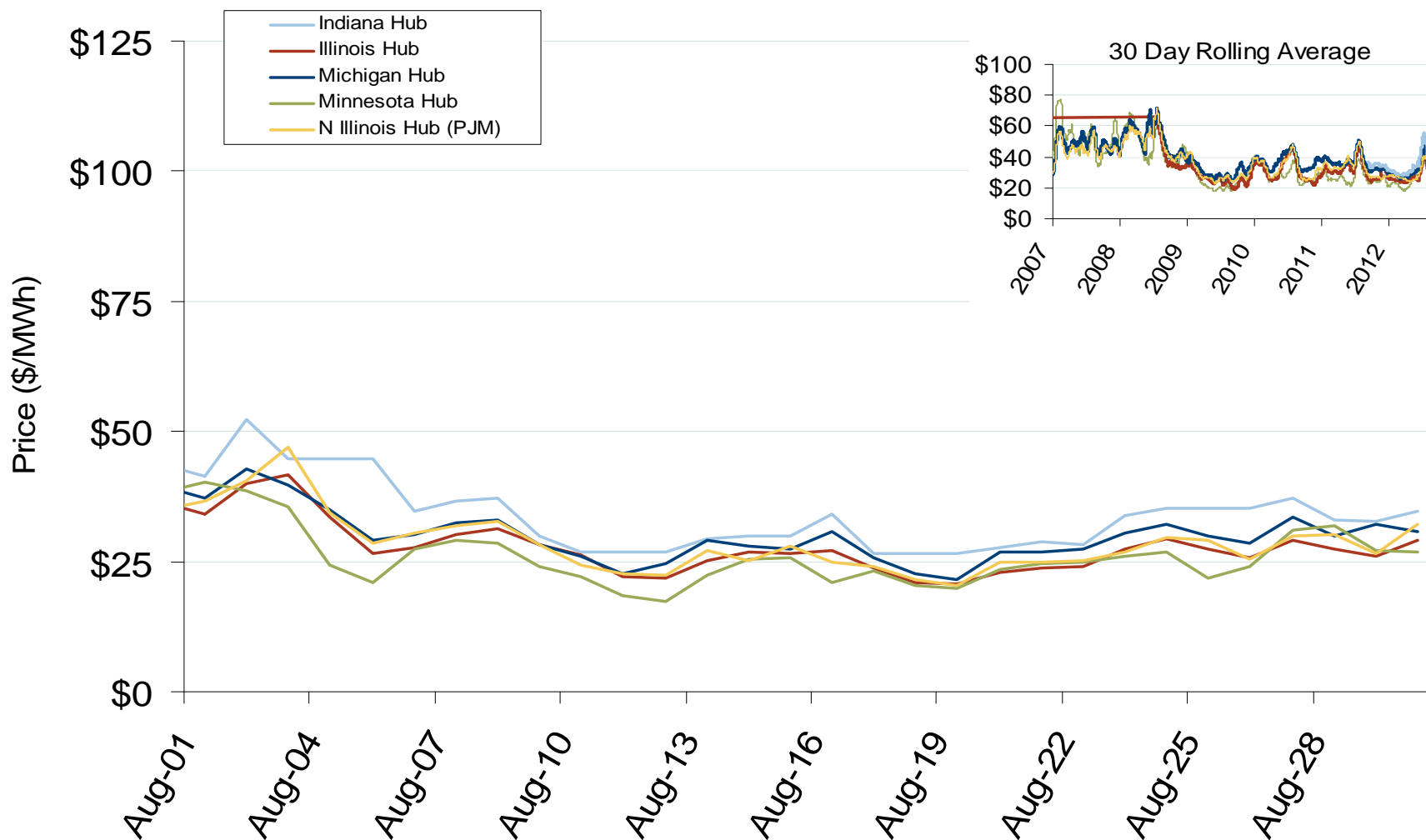
## Midwest Annual Average Bilateral Prices

Annual Average Day Ahead On Peak Prices (\$/MWh)						
	2007	2008	2009	2010	2011	5-Year Avg
Cinergy	\$61.20	\$66.88	\$34.65	\$41.51	\$41.17	\$51.20
Michigan Hub	\$64.43	\$69.15	\$36.56	\$43.68	\$42.73	\$53.81
Minnesota Hub	\$72.32	\$67.46	\$32.09	\$36.86	\$34.57	\$53.62
NI Hub	\$58.93	\$66.13	\$34.47	\$40.85	\$40.31	\$50.57
Illinois Hub	\$59.88	\$62.52	\$31.36	\$38.22	\$38.12	\$48.65
MAPP South	\$61.18	\$69.18	\$33.31	\$37.60	\$35.48	\$51.28

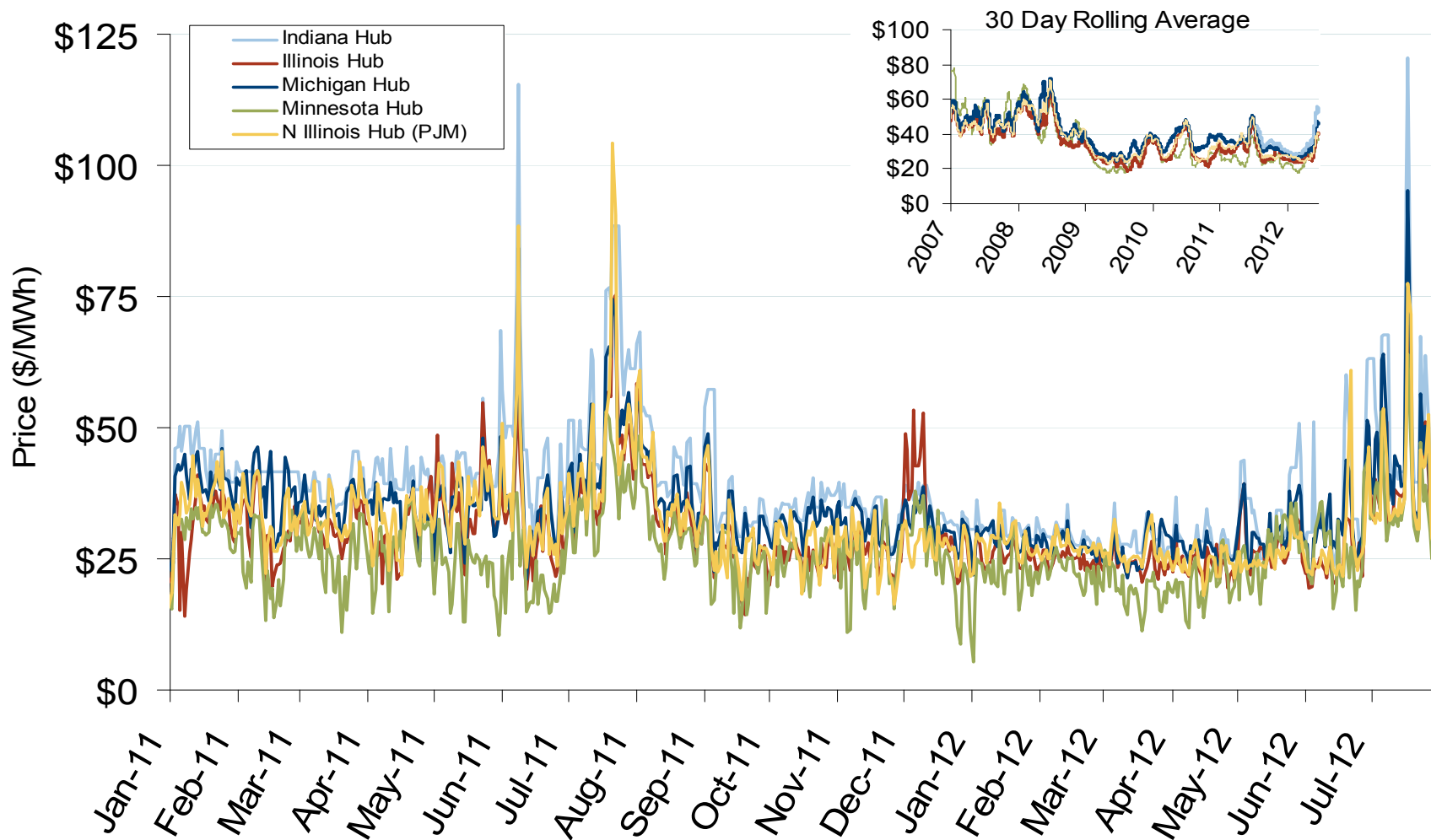
Midwest Electric Market: Last Month's RTO Prices

Federal Energy Regulatory Commission • Market Oversight • [www.ferc.gov/oversight](http://www.ferc.gov/oversight)

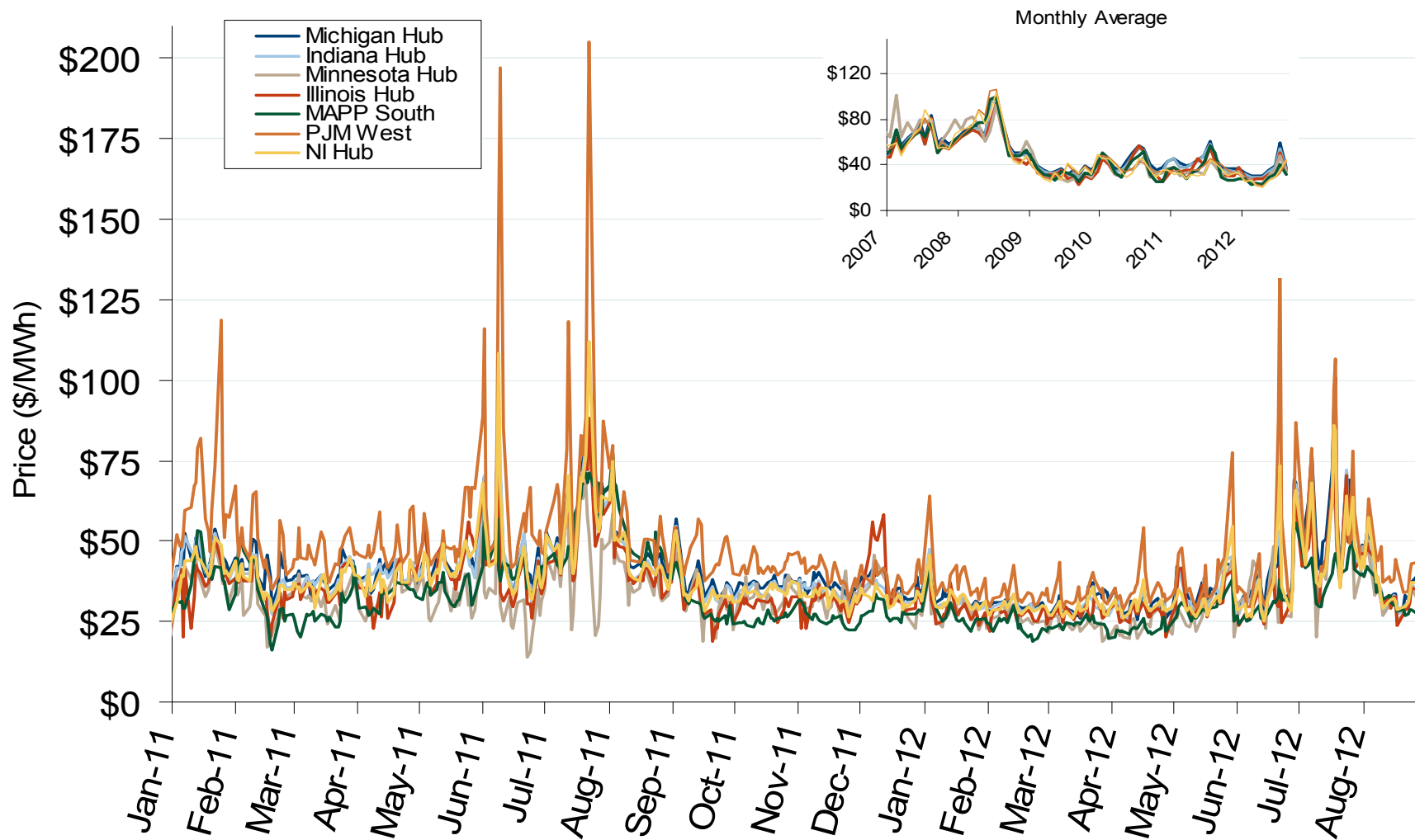
## Daily Average of MISO Day-Ahead Prices - All Hours



## Daily Average of MISO Day-Ahead Prices - All Hours



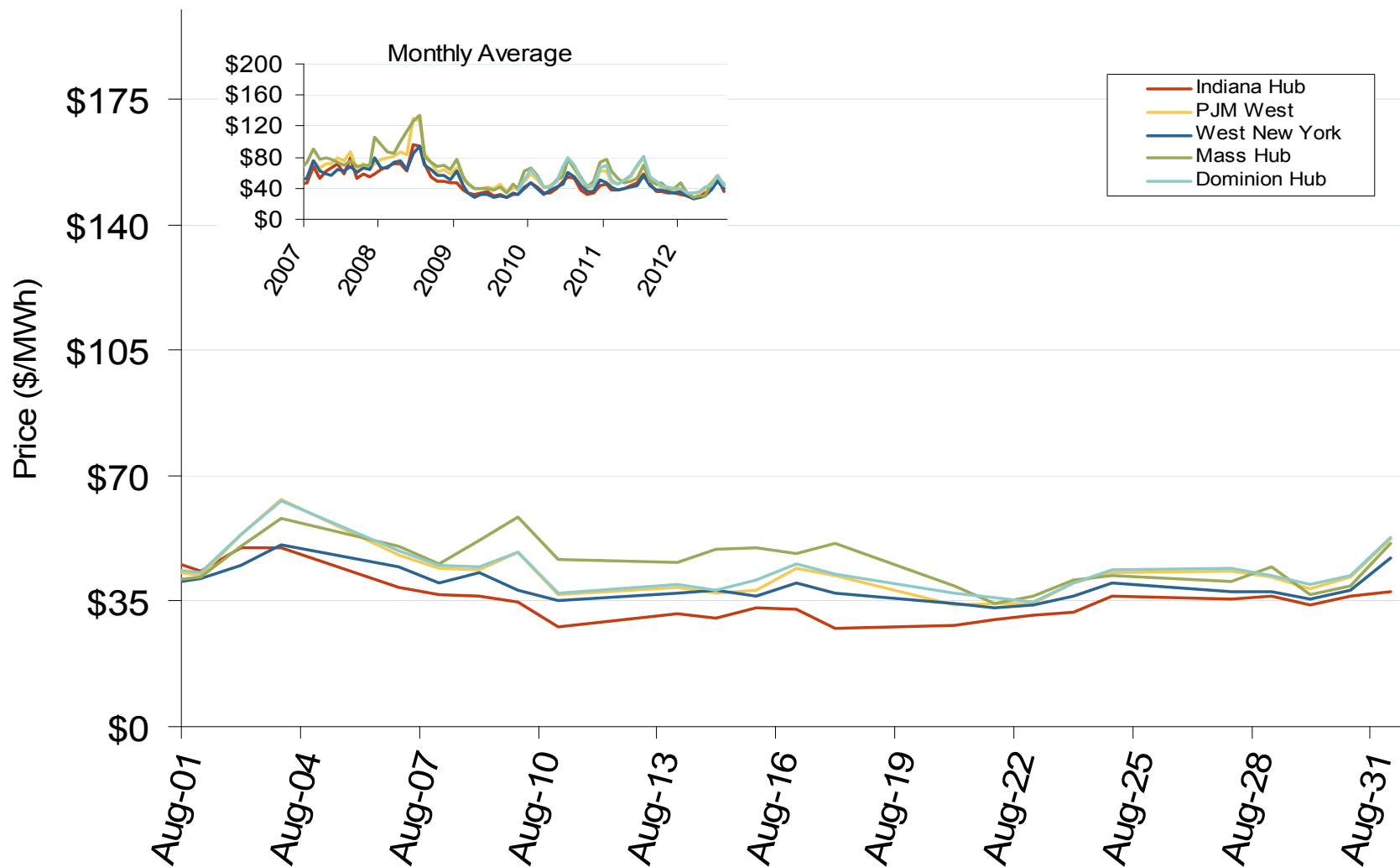
## MISO/PJM Index Day-Ahead On-Peak Prices



Midwest Electric Market: Last Month's Eastern Index Prices

Federal Energy Regulatory Commission • Market Oversight • [www.ferc.gov/oversight](http://www.ferc.gov/oversight)

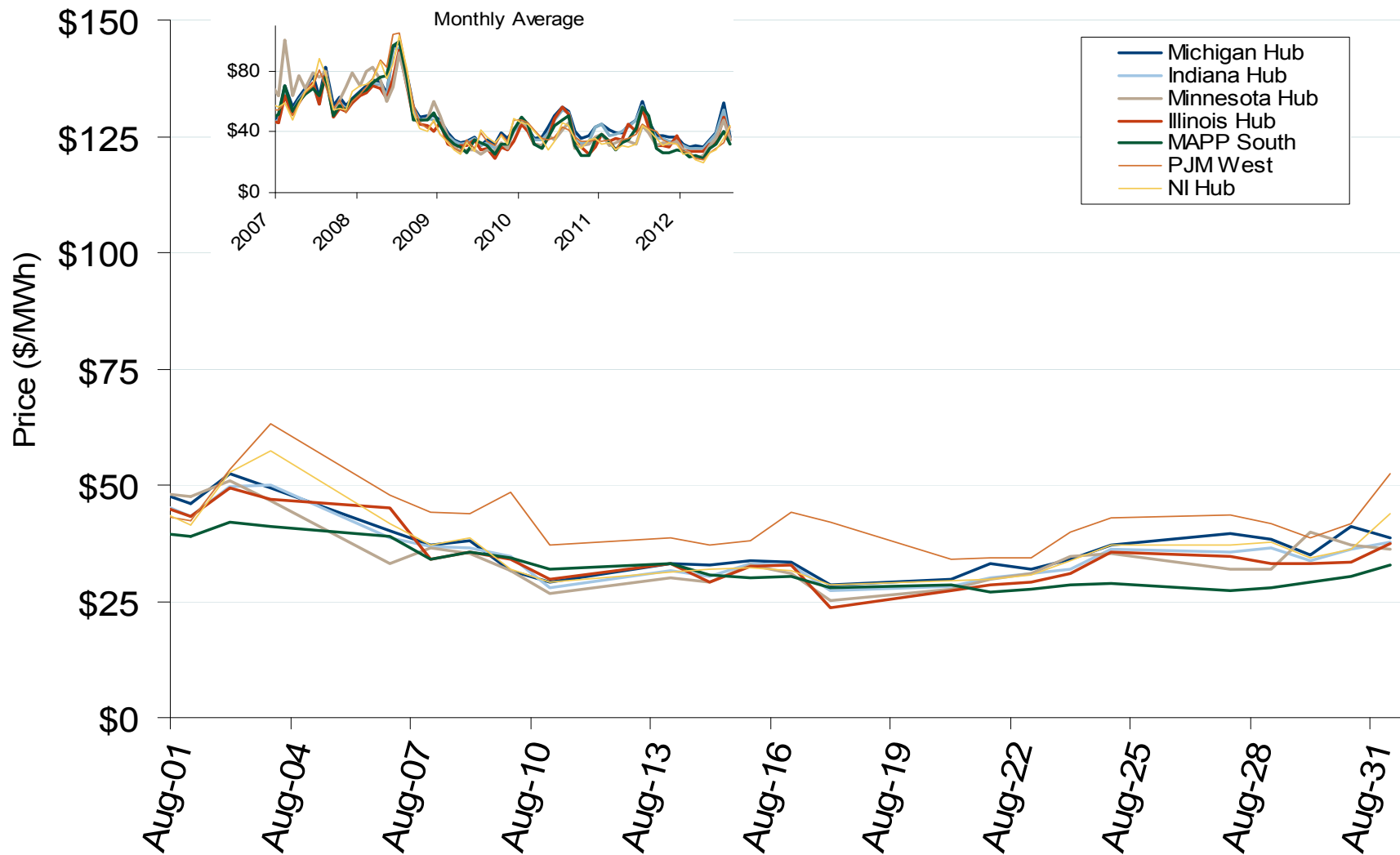
## Eastern Daily Index Day-Ahead On-Peak Prices



Midwest Electric Market: Last Month's MISO/PJM Index Prices

Federal Energy Regulatory Commission • Market Oversight • [www.ferc.gov/oversight](http://www.ferc.gov/oversight)

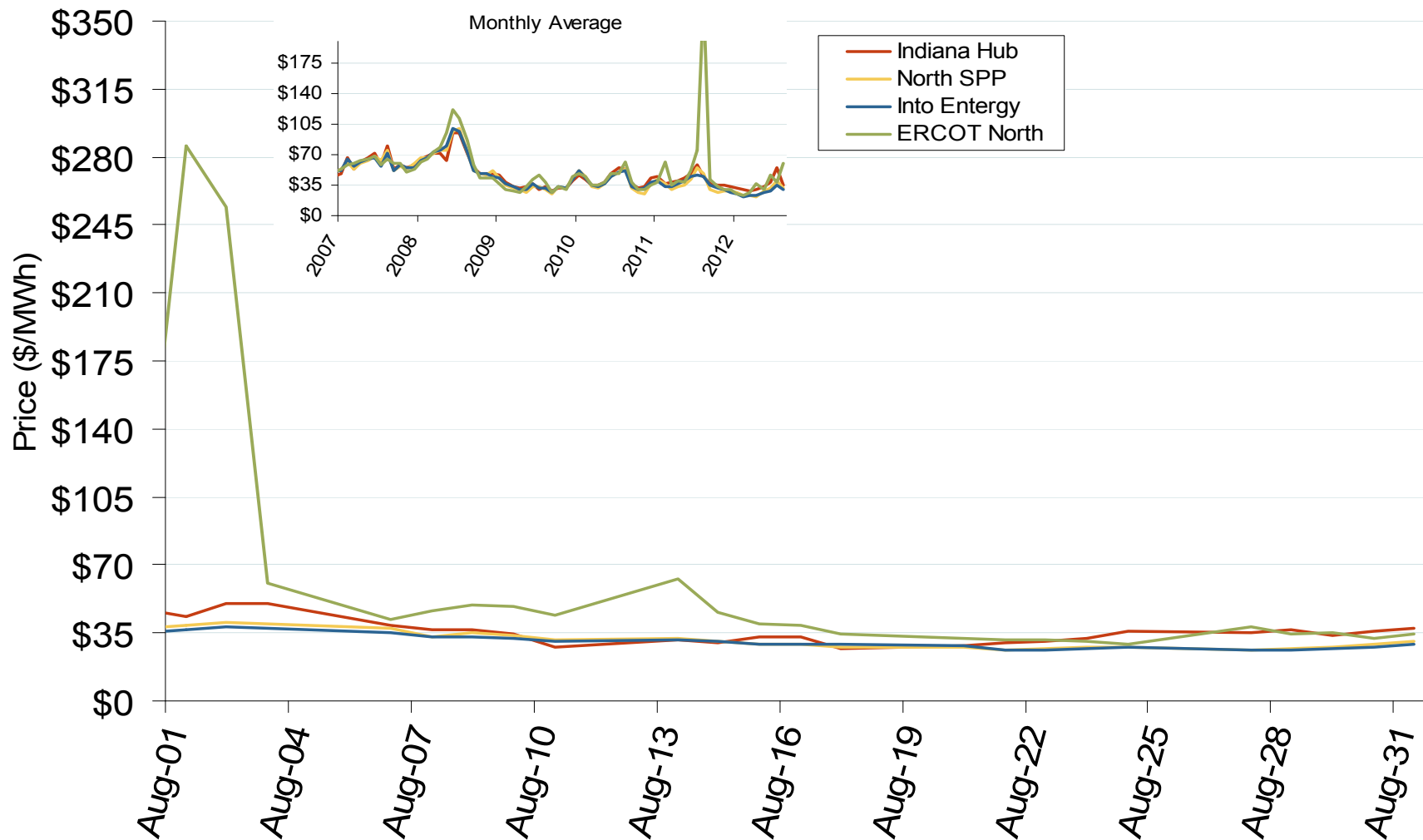
## MISO/PJM Index Day-Ahead On-Peak Prices



Midwest Electric Market: Last Month's Midwestern Index Prices

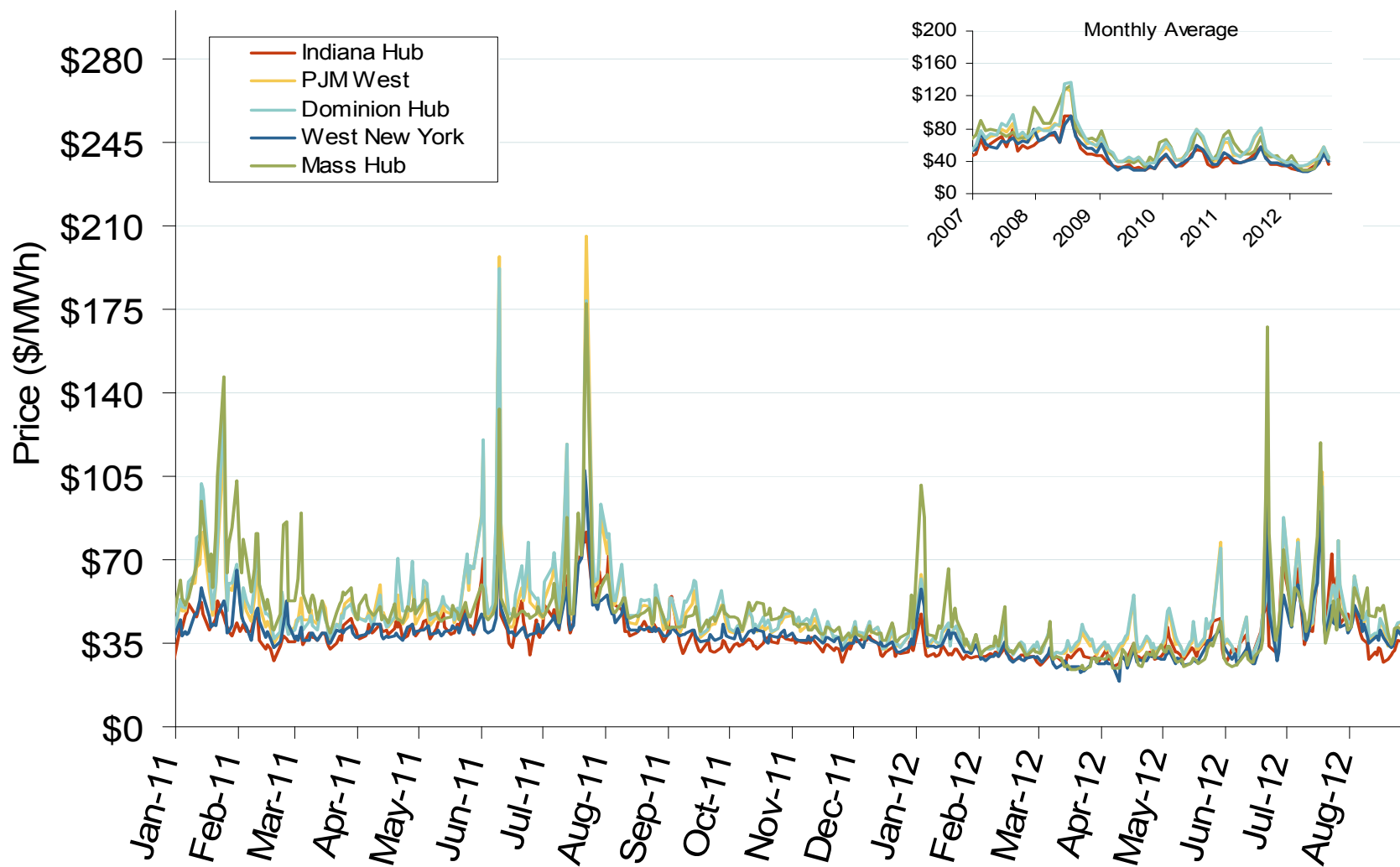
Federal Energy Regulatory Commission • Market Oversight • [www.ferc.gov/oversight](http://www.ferc.gov/oversight)

## Midwestern Daily Index Day-Ahead On-Peak Prices



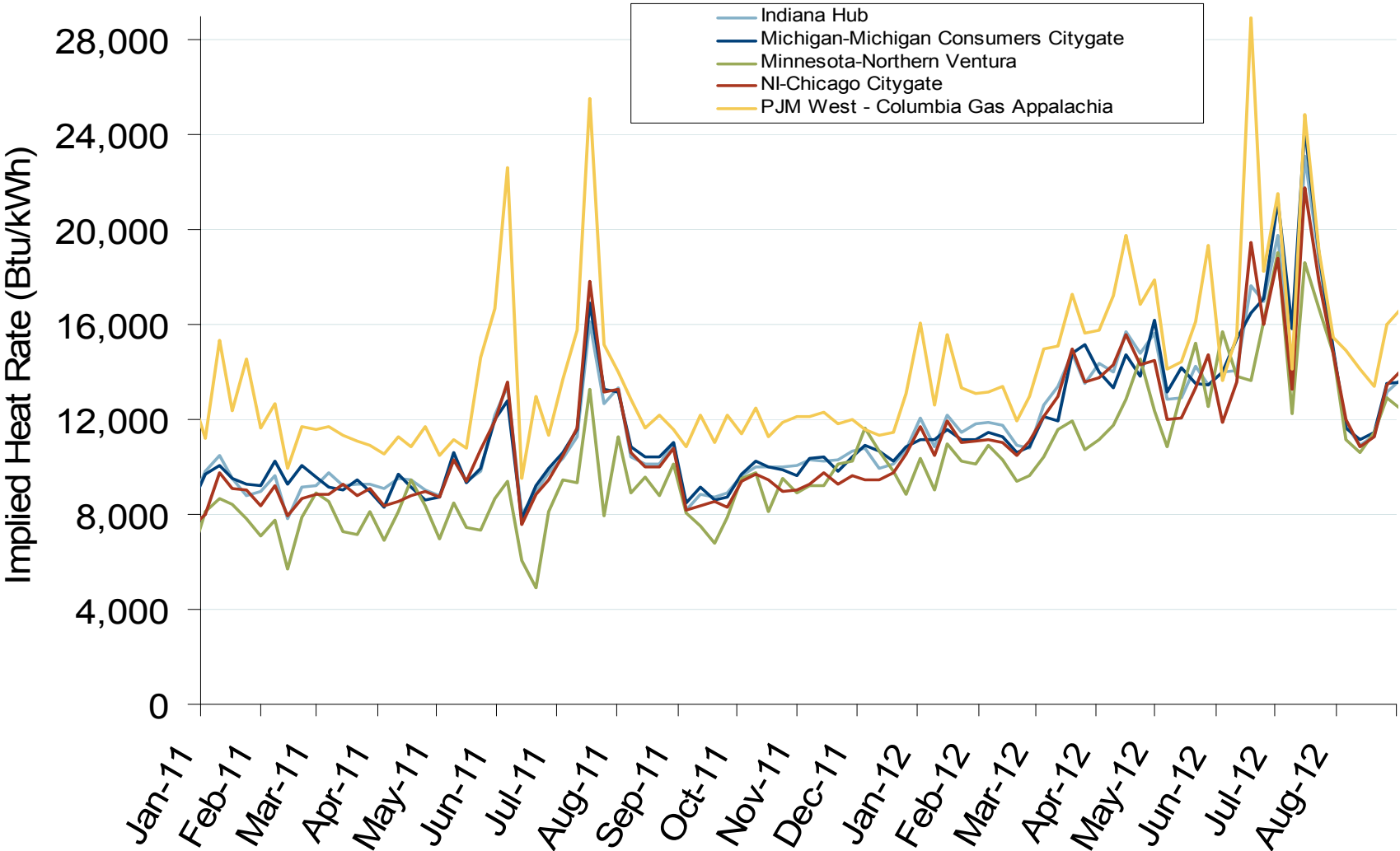


## Eastern Daily Index Day-Ahead On-Peak Prices



Federal Energy Regulatory Commission • Market Oversight • [www.ferc.gov/oversight](http://www.ferc.gov/oversight)

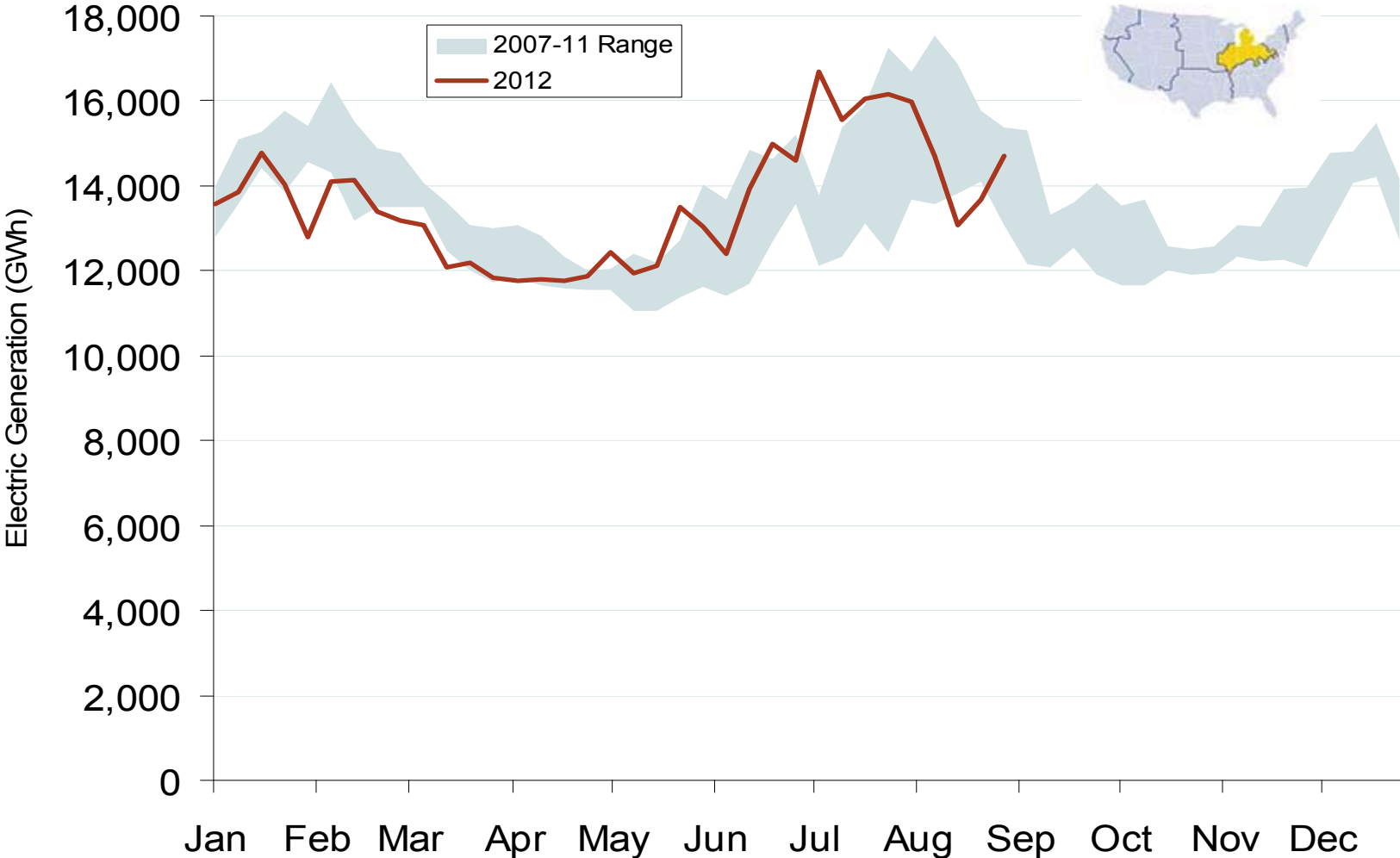
# Implied Heat Rates at MISO and PJM Hubs - Weekly Averages



Source: Derived from Platts on-peak electric and natural gas price data  
September 2012

Updated: September 06, 2012

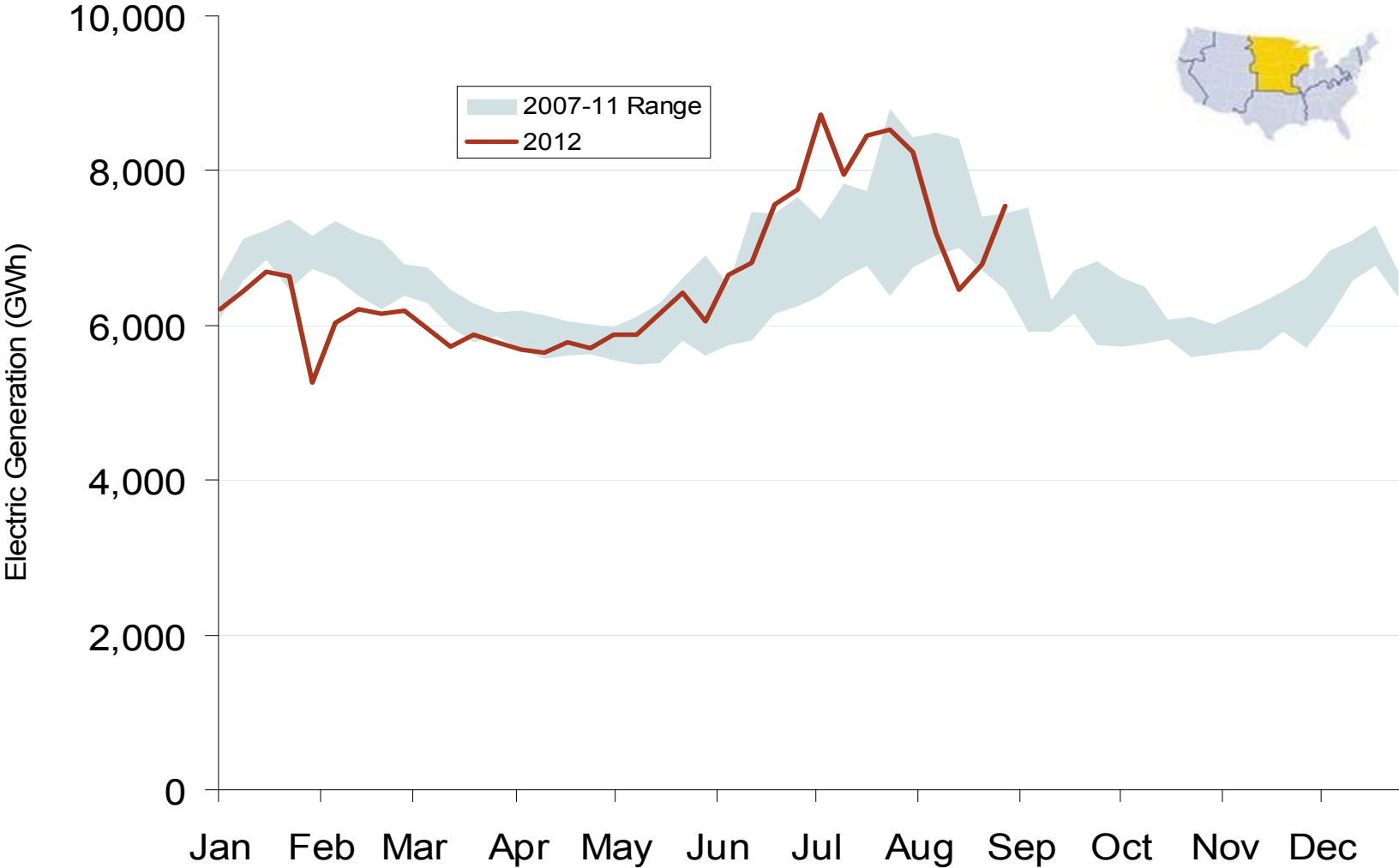
# Weekly Generation Output - Central Industrial Region



Source: Derived from *EEI* data  
September 2012

Updated: September 06, 2012

### Weekly Generation Output - West Central



Source: Derived from EEI data  
September 2012

Updated: September 06, 2012