

Clinical Laboratory Improvement Advisory Committee September 7, 2005



- Joe Boone, PhD
- Associate Director for Science
- Division of Public Health Partnerships



SAFER • HEALTHIER • PEOPLE™





I QLM Update

Progress since last
CLIAC Meeting

- Inaugural IQLM Conference
- Progress of Workgroups
- Incorporation of IQLM
- Call for nominees for Board of Directors
- Newsletter
- Conference Proceedings
iqlm.org
- Conference Highlights in **MedGenMed**
medscape.com/viewarticle/506782
- Next Steps

IQOLM

INSTITUTE FOR QUALITY IN
LABORATORY MEDICINE

2005

Conference
April 28-30

Recognizing
EXCELLENCE
in Practice

OMNI HOTEL - CNN CENTER
ATLANTA, GEORGIA

2005 Landmark Conference

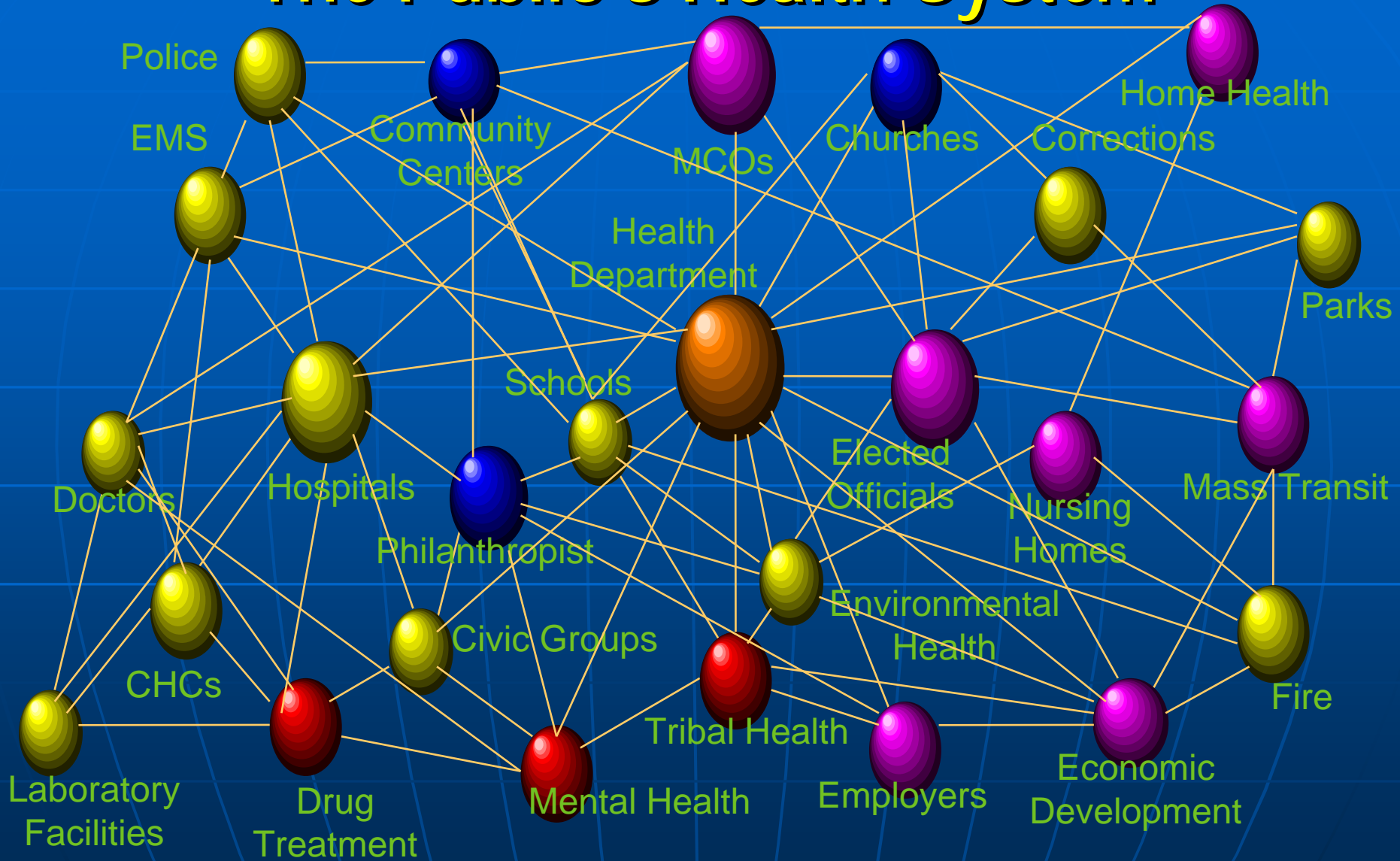
- 277 stakeholders: Healthcare providers, laboratory service providers, diagnostic industry representatives, public health practitioners, health system researchers, payers and others.
- Opportunity to hear from healthcare leaders



Dr. Kizer's Keynote



The Public's Health System



Who is responsible?

69 year old diabetic patient
with pneumonia

Community clinician

Nursing Home

Skilled nursing unit

Medical Ward

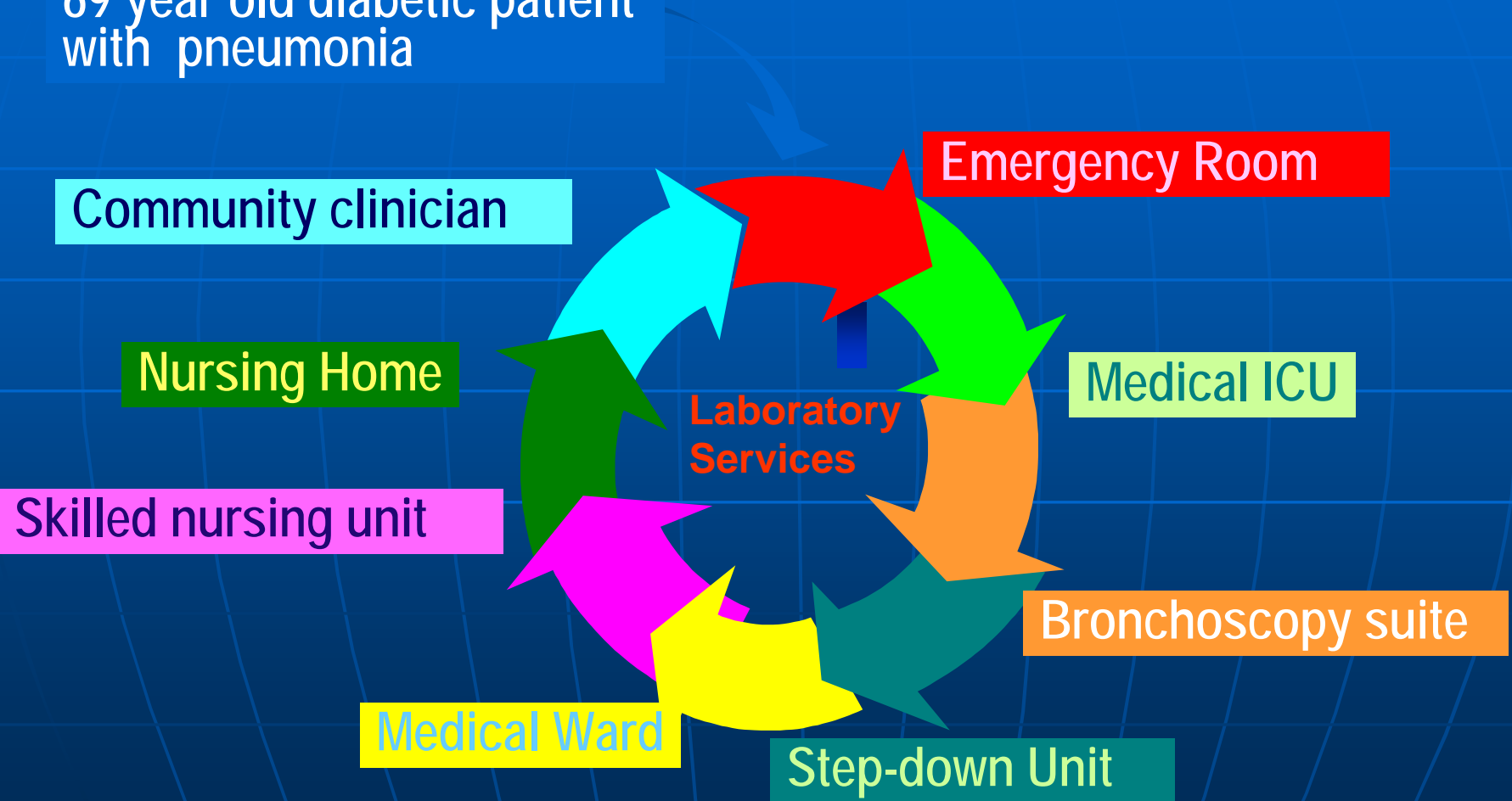
Step-down Unit

Bronchoscopy suite

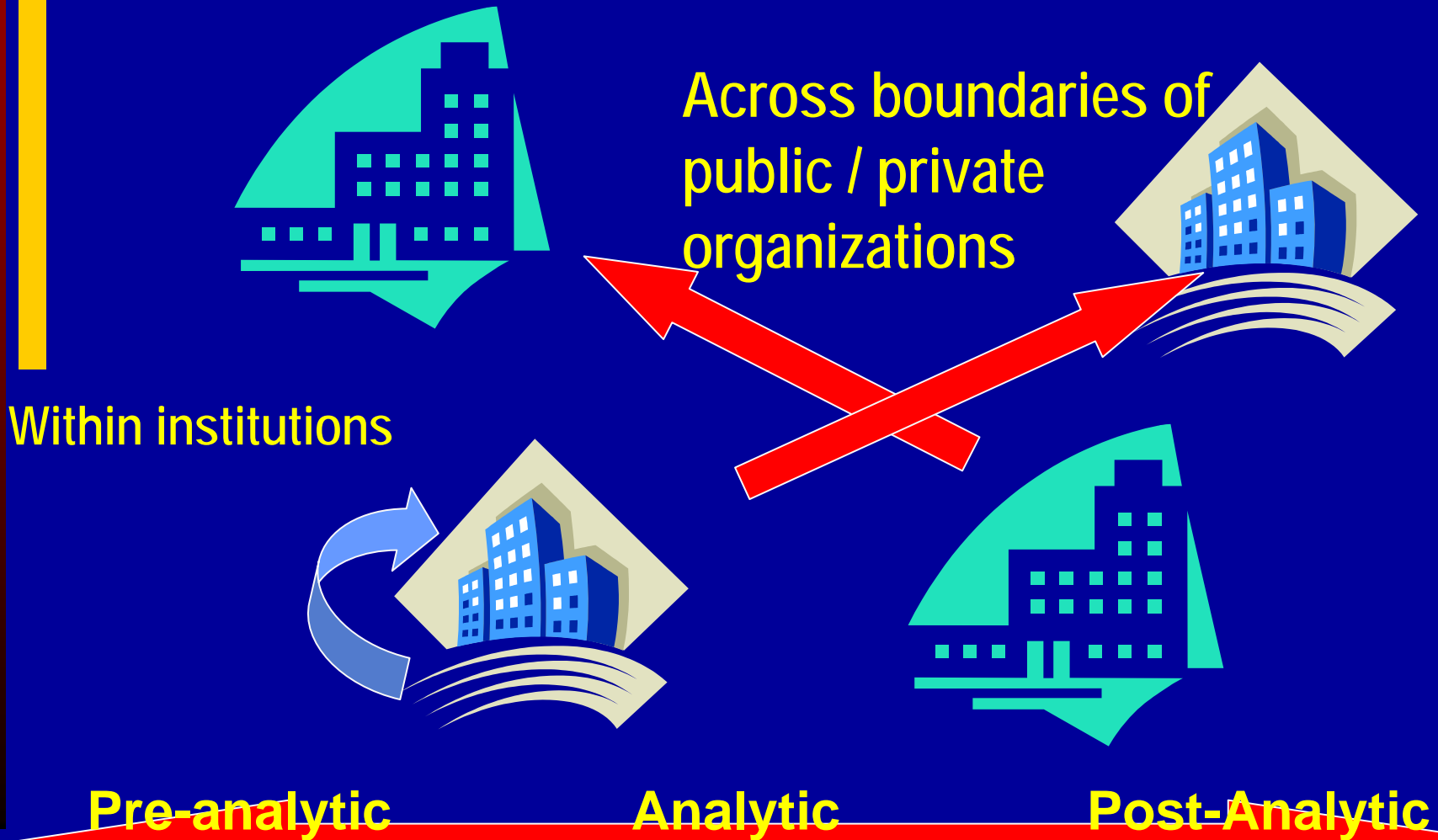
Medical ICU

Emergency Room

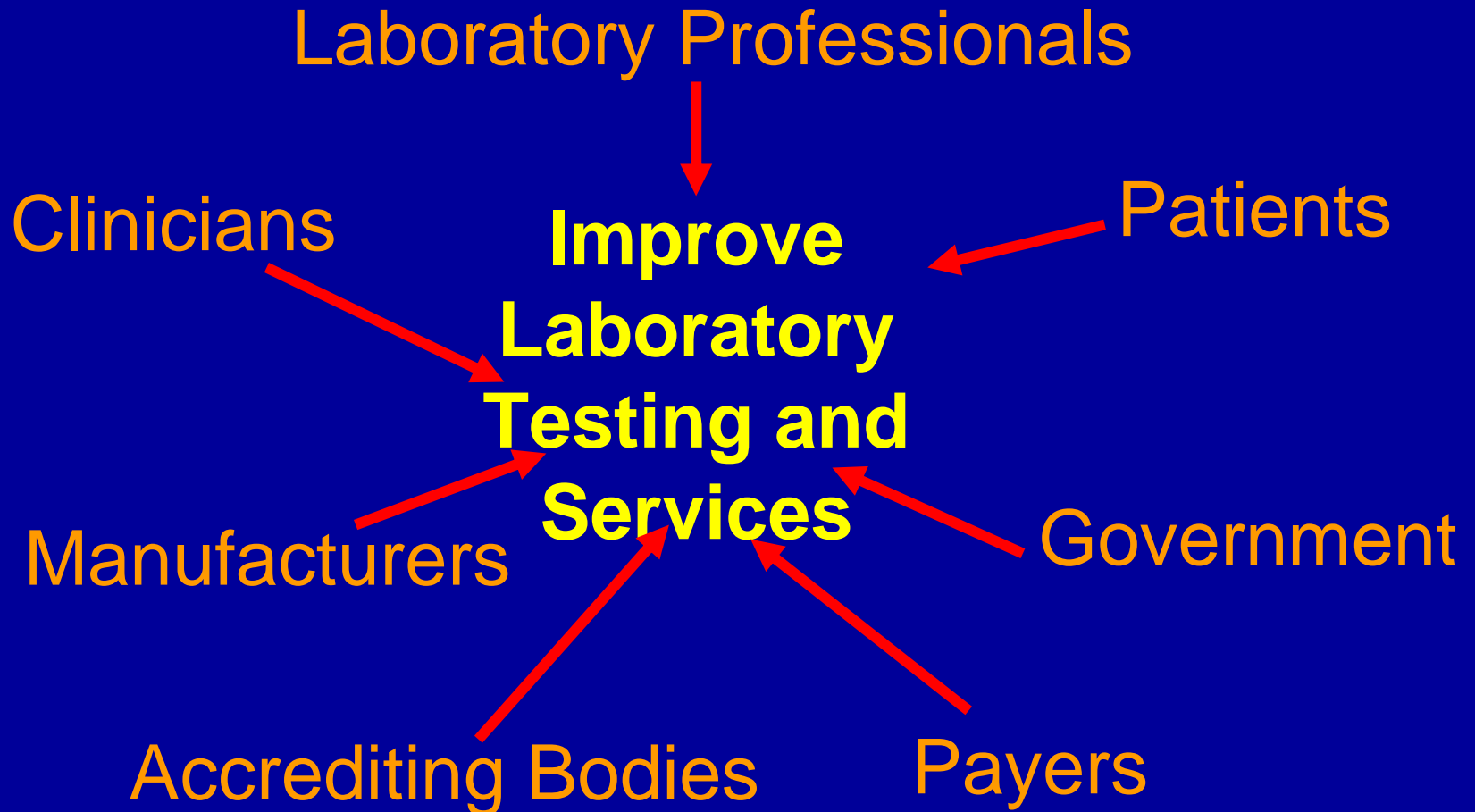
Laboratory
Services



Institute for Quality in Laboratory Medicine - Promoting Integrated System of Services within and across boundaries



Institute for Quality in Laboratory Medicine Teamwork





Recognizing the Best



2005 IQLM Conference

Recognizing Excellence in Practice

Winner

Brent James

James P. Bagian

James O. Westgard

Peter Howanitz

Michael Laposata

Carl Wittwer

Kenneth W. Kizer

Dennis S. O'Leary

George D. Lundberg

David M. Eddy

Award

Excellence in Quality of Care

Patient Safety

Improved Quality Process

Improved Quality Process

Improved Clinical Integration

Technical Advancement

Leadership - Organizational

Leadership - Organizational

Career

Distinguished Achievement

Networks Workgroup Session

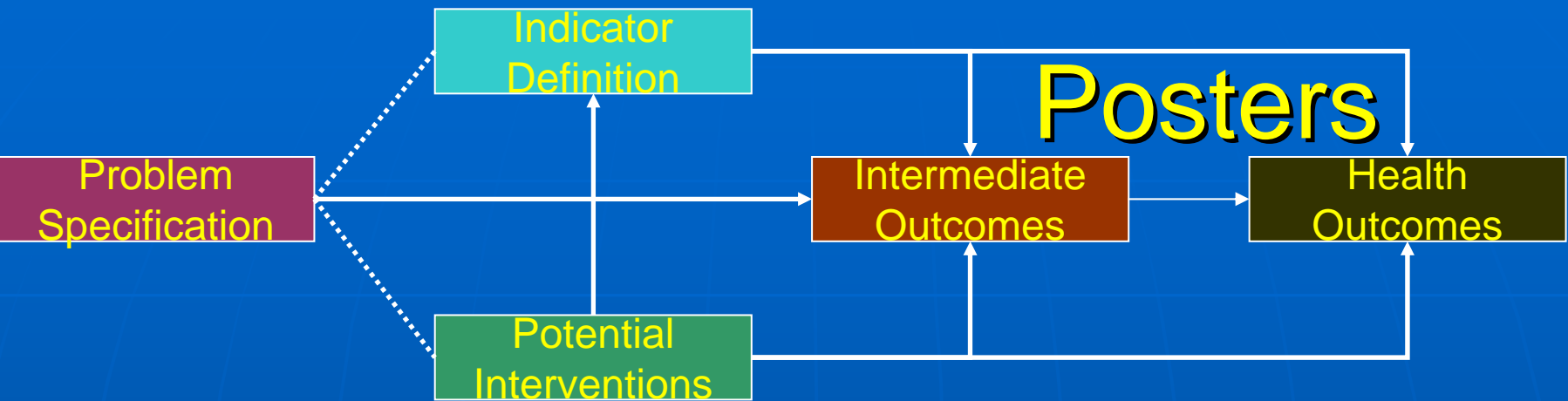


Workgroup Reports



What was shared:

- Set of Quality Laboratory Indicators
- Results of Pilot Survey of Quality Practices
- Outline of National Report on Quality of Laboratory Services



What was shared - Results of Studies on:

- **Quality Improvement/Quality Indicators,**
- **Laboratory Errors & Impact on Patient Safety**
- **Laboratory Utilization**
- **Partnerships to Improve Quality**
- **Performance Evaluation/Cost-Effectiveness**
- **Informatics/Information Technology**



Business Case for Quality

What was shared:

- **Best Practices from perspective of:**
 - Laboratory
 - Government
 - Insurers
 - Economics
 - Information Technology
 - International
 - Industry
 - Clinicians/ patients



Learning From the Field



- Lessons Learned
- Quality improvement efforts of participants



Comments from Conference

- “ I will incorporate some of the ideas and points described in both the sessions and on the posters into our QA/QI program. It generated a good exchange of ideas and practices”
- “ Begin to document our practices and the gains we have made”



An opportunity to participate

- **Sign up for the Newsletter**
- **Look for opportunities to be involved**
- **Make a commitment**

Individuals and Institutions



- **Become part of IQLM - Help create a new future**
- **Incorporate best practices**
- **Assist with the IQLM projects**
- **Promote better communication and collaboration**

Next Steps

- CDC works with NQF to define laboratory service issues and identify potential solutions
- IQLM continues to develop as a public/private partnership
- IQLM continues to develop as a source of information and point of coordination for activities to improve laboratory services and patient safety

CDC in conjunction with the National Quality Forum

Series of NQF Workgroups

- NQF members define Quality Laboratory Services - **2005**
- Describe Performance Measures that would be useful to assess laboratory services - **2005**
- Define utility of tests currently used in laboratory services - **2006**
- Describe appropriate incentives for quality laboratory services – **2006**



Ahead for IQLM

Continue

- Quality indicators evaluation
- Networks to collect timely information
- Development of National Report Items
- Newsletter and Improved Web-site

Recent IQLM

- Incorporated: July 2005
- Board of Directors
- New Workgroups (1 Yr terms)
- Partner Councils (over 70 organizations)
- Volunteers

The Laboratory and Healthcare

- Time is right to use laboratory service as to a means to enhance healthcare
- IQLM could help focus efforts

Healthcare System - Issues for the future

- Rising costs
- Public/purchaser awareness & accountability
- Value-based decision on payment
- Integrated healthcare delivery
- Information Technology as change agent
- Performance measures

Healthcare System– Changing Economics

- Salary: Do as little as possible for as few as possible
- Capitation: Do as little as possible for as many as possible
- Fee for Service: Do as much as possible for as many as possible
- Pay for Performance: Do the things that matter and nothing else

Healthcare System – Performance Measures (P4P Example UK)

- **Link 25% of 1^o Care pay to Quality of Performance**
 - Guidelines then Audits, then Peers,
 - Then \$
- **76 indicators extracted from ELR**
 - % Patients with TC in last 15 months
- **Expected Effects**
 - Increased use of IT
 - More large integrated care teams
 - Improved health outcomes
 - Gaming
 - Worst care for non-incentive conditions

Laboratory services and healthcare

- Rising costs
 - Promote appropriate use of laboratory services
- Public & purchaser awareness and accountability
 - Promote knowledge of best practices
- Performance measures
 - Promote measures with incentives that matter

Laboratory services and healthcare

- Value-based decision on payment
 - Promote practices which lead to better outcomes
- Integrated healthcare delivery
 - Promote a truly integrated delivery system
- Information Technology promoted as change agent
 - Promote better use of technology



Questions?



HHS Website for Deployment of Healthcare Professionals

- <https://volunteer.hhs.gov>
- 1-866-kat medi
- Morticians
- Physicians
- EMT
- Laboratory Technicians
- Nurses
- Medical Examiners