



**Department of  
Defense**



**Federal Aviation  
Administration**

# **NOTAM Briefing: Guidance for NOTAM “D” Standardization**

# Standardization of D NOTAMs

- **Reclassify Local NOTAMs**
- **Expand definition of Distant NOTAMs**
  - NOTAM Handbook 7930.2 updates
  - U.S. NOTAM System enhancements
- **Introduce Keywords**
- **Create central repository for all NOTAMs**
- **Prepare for full ICAO implementation**

# Why Modernize?

- **Must respond to customer concerns**
  - ICAO standardization
  - Local NOTAM accessibility
  - Data reliability, accuracy, and timeliness
  - Digital delivery of data
- **Need to operate more efficiently**
  - Resources are limited
  - Improve service delivery without increase in cost
- **Need to work cooperatively with stakeholders**
  - May 2007
    - DoD/FAA formed partnership to harmonize/consolidate NOTAM system
    - Held Industry Day

# Modernization Goals

- **Improve the quality of NOTAMs**
  - Provide meaningful information
  - Enhance NOTAM interpretation
    - Graphical depiction necessary
  - Improve reliability and accessibility
    - Digital data exchange will enhance filtering and sorting
- **Conform to ICAO standards**
- **Provide a single source for all NOTAMs**
  - One collection and distribution point for all information
  - Consolidate inefficient legacy systems for improved customer service
- **Balance diverse customer needs**
  - Airlines, ATC, General Aviation, International, Military

# Initial Policy Change

- **Expand definition of a Distant (D) NOTAM**
  - Adopt ICAO criteria for aerodrome movement area
    - Now includes taxiways, ramps, and aprons with associated lighting
- **Label unverified reports of hazards**
  - Information that meets NOTAM criteria but is unverified will be tagged with (U) and disseminated as D NOTAM
    - Applicable only where letters of agreement exist
    - Currently Alaska is the only state utilizing (U) NOTAMs
- **Label other information that doesn't meet ICAO criteria**
  - Other information that may impact aircraft operations will be tagged with (O) and disseminated as D NOTAM
- **Shift NOTAM authority to U.S. NOTAM Office**

# January 28, 2008 Implementation

- **Domestic**

- U.S. NOTAM System to enforce keywords
- Non-conforming NOTAMs will be rejected back to the originator

- **International**

- International NOTAM dissemination will remain as-is for specific locations
- A-series NOTAMs will contain keywords
- All keywords will cross over in ICAO format

# Keywords

- **All (D) NOTAM shall be prefaced with a keyword:**
  - AD Aerodrome
  - AIRSPACE Airspace
  - APRON Apron
  - COM Communications
  - NAV NAVAID
  - (O) Other Aeronautical Information
  - OBST Obstructions
  - RAMP Ramp
  - RWY Runway
  - SVC Services
  - TWY Taxiway
  - (U) Unverified Movement Area

# Aerodrome “AD”

- Applies to any hazard to aircraft operations on or within 5 SM of an aerodrome which encompasses airport, heliport, helipad, and maneuvering area that are not covered under runways, taxiways, ramps, aprons, obstructions, nav aids, services, communications or airspaces
- !RIU O88 AD HELI DCMSND
- !AOO 29D AD CLSD EXC PPR 0330-1430 MON-FRI
- !LAL LAL AD GRASS LDG STRIP LCTD 400 S RWY 9R/27L 1700 X 55 AVBL VMC DALGT PPR SUN N FUN WEF 0804151100-0804232359
- Aerodrome = a defined area on land or water (including any buildings, installations, and equipment) intended to be used either wholly or in part for the arrival, departure and surface movement of aircraft (ICAO Annex 14)



# Airspace “AIRSPACE”

- Applies to hazards associated with special use airspace, CARF, aircraft operations, aerial refueling, unmanned rockets, balloons, fireworks, parachute jumping/sky diving, and high altitude balloons.
- !BKW BKW AIRSPACE PYROTECHNIC DEMO 1000/BLW 8 W .5 NMR AVOIDANCE ADZD WEF 0812312230-0812312300
- !CARF ZNY AIRSPACE STATIONARY AIRSPACE RESERVATION WITHIN 100 NM RADIUS FJC360020 5500-FL270 WEF 0811131500-0811231700

# Apron “APRON”/Ramp “RAMP”

- Applies to hazards associated with defined surface areas on an aerodrome. The terms ramp and apron are synonymous and are currently used in various publications.
- !ATL ATL APRON NORTH TWY L3 NORTH APRON CLSD
- !MEM MEM RAMP FEDEX FEEDER RAMP P 1/2 IN LOOSE SN FEDEX FEEDER RAMP
- Apron/Ramp = a defined area, on a land aerodrome, intended to accommodate aircraft for purposes of loading or unloading passengers, mail or cargo, fueling, parking, or maintenance

# Communications “COM”

- Applies to communication outlet commissioning, decommissioning, outage, unavailability, and ATC frequency status
- !DCA PSK COM RCO OTS
- !IPT IPT COM VOR VOICE OTS
- !DCA PSK COM RCO OTS
- !IPT IPT COM VOR VOICE OTS
- !ENA ENA COM LAA 123.6 OTS

# NAVAID “NAV”

- Applies to navigation aid status such as VORs, ILS, WAAS, GPS, MLS, TACANs, NDBs, etc.
- !PNC PER NAV VOR UNUSBL 045-060 BYD 20  
BLW 2000
- !LEX LEX NAV RWY 5 ILS OTS
- !PNC PER NAV VOR UNUSBL 045-060 BYD 20  
BLW 2000

# Other Aeronautical Information “(O)”

- Applies to aeronautical information received from any authorized source that may be beneficial to aircraft operations and does not meet defined NOTAM criteria
- !LOZ LOZ (O) CONTROLLED BURN OF HOUSE 8 NE APCH END RWY 23 WEF 0810211300-0810211700

# Obstructions “OBST”

- Applies to obstructions including obstruction lighting outages, moored balloons, kites, towers, cranes, stacks, etc.
  - All obstruction light outages within a 5-statute mile (4.3 nautical miles) radius of an airport, or obstruction light outages outside a 5-statute mile radius that exceed 200 feet above ground level (AGL).
- !MIV N52 OBST TOWER 580 (305 AGL) 7 SW LGTS OTS (ASR NUMBER) TIL 0812302300
- !PIE CLW OBST CRANE 195 (125 AGL) .25 NE (2755N08241W) TIL 0811032000
  - NOTE: Insert latitude/longitude, if known, immediately after cardinal direction in the format shown above.

# Runway “RWY”

- Applies to landing, take-off surfaces, associated lighting and signage.
- !STL STL RWY 12L/30R CLSD EXC TXG
- !LEX LEX RWY 5 REIL OTS
- !MIV MIV RWY 10/28 CLSD WEF 0807021200-0807021600
- !STL STL RWY 12L/30R CLSD EXC TXG
- !LEX LEX RWY 5 REILS OTS
- !PRC SJN RWY 13/31 NOW RWY 14/32

# Services “SVC”

- Applies to facilities and services
- !MIV MIV SVC FUEL UNAVBL TIL 0809301600
- !SHD SHD SVC TWR 1215-0300 MON-FRI/1430-2300 SAT/1600-2200/SUN TIL 0809142200
- !MIV MIV SVC FUEL UNAVBL TIL 0807301600



# Taxiway “TWY”

- Conditions pertaining to single or multiple taxiways. Use runway format, identifying each taxiway by letter or letter/number as assigned, separated by commas, or specify ‘all’. If not identified, describe as adjacent to a runway or direction from the runway.
- !LNS LNS TWY A LGTS OTS
- !DSM DSM TWY P1, P3 CLSD
- !RDU RDU TWY A CLSD BTWN A1, A2 TIL  
0807011600

# Unverified Aeronautical Information “(U)”

- Conditions pertaining to movement areas or other information received that meets NOTAM criteria and has not been confirmed by the Airport Manager (AMGR) or their designee.
- For use only where authorized by Letters of Agreement exist.
- If Flight Service is unable to contact airport management, Flight Service shall forward (U) NOTAM information to USNS. Subsequent to USNS distribution of a (U) NOTAM, Flight Service will inform airport management of the action taken as soon as practical. Any such NOTAM will be prefaced with ‘(U)’ as the keyword and followed by the appropriate keyword contraction, as set forth in this Policy, following the Location Identifier.
- !ORT 6K8 (U) RWY ABANDONED VEHICLE

# Dual Use of Keywords

- Keyword is associated with the outage or the event being reported
- !ATL ATL NAV RWY 8L ILS CAT 2 NA
- !BWI BWI SVC RWY 10 RVRR OTS
- !PRC SJN RWY 13/31 NOW RWY 14/32

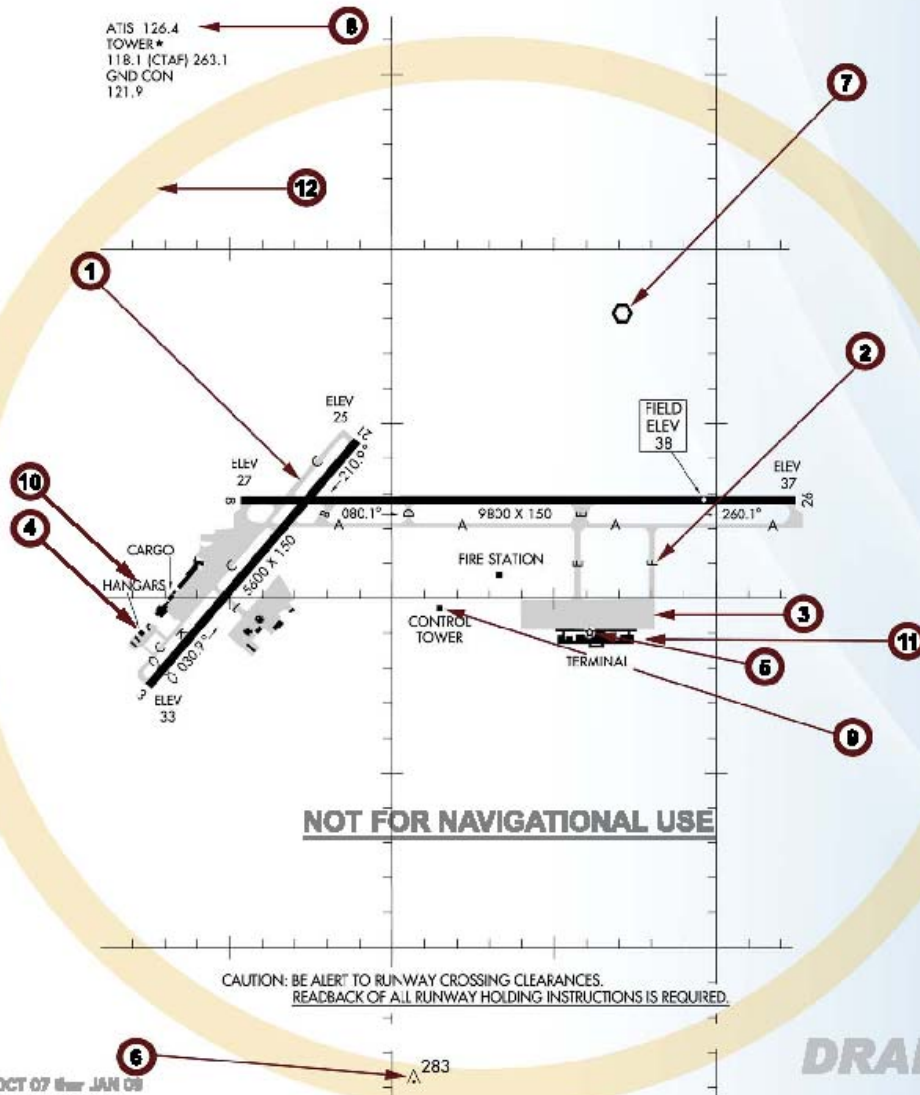
# Personnel and Equipment Working (PAEW)

- PAEW is not a keyword
- Any NOTAM associated with “Personnel and Equipment Working” (PAEW), will be associated with RWY, TWY, RAMP, or APRON and a direction from the associated Movement Area, as appropriate.
- !CHO CHO RWY 23 PAEW FIRST 500 ALONG SE SIDE
- !SBY SBY TWY E PAEW SOUTH SIDE BTN RWY 5/TWY G
- !MEM MEM RAMP PAEW FEDEX CARGO RAMP EAST SIDE

# Pointer NOTAMs

- A pointer NOTAM is a type of D NOTAM that points to another NOTAM, which includes D, FDC, or published NOTAMs
- Pointer NOTAMs shall use the keyword associated with the affected event with the reference NOTAM
- !CPR CPR AIRSPACE SEE DDY 12/045 PJE WEF  
0812141400-0812141830

# The "D" NOTAM



## Keywords

## Explanations

Keywords	Explanations
<b>RWY</b>	<b>1</b> RWY 321 CLSD Runway 3 and Runway 21 is closed to aircraft
<b>TWY</b>	<b>2</b> TWY F LGTS OTS Taxiway F has its lights out of service
<b>RAMP</b>	<b>3</b> RAMP TERMINAL EAST SIDE CONSTRUCTION The ramp in front of the east side of the terminal has ongoing construction.
<b>APRON</b>	<b>4</b> APRON SW TWY C NEAR HANGARS CLSD The apron near the southwest taxiway C in front of the hangars is closed
<b>AD</b>	<b>5</b> AD ASN OTS The aerodrome airport beacon is out of service
<b>OBST</b>	<b>6</b> OBST TOWER 283 (246 AGL) 22.2 8 LGTS OTS (ASN 1005881) TIL 0707272300 An obstruction exists for a tower that is 283 feet above Mean Sea Level (MSL) or 246 feet Above Ground Level (AGL) 2.2 statute miles south of the field has its lights being reported out of service. The Airborne structure registration number (ASR) for this obstruction is 1005881 in the FCC database and this light will be returned to service at 2300 UTC (Universal Coordinated Time) on July 27, 2007.
<b>NAV</b>	<b>7</b> NAV VOR OTS Navigation, the VOR located on this aerodrome is out of service
<b>COM</b>	<b>8</b> COM ATIS OTS Communications, The Automatic Terminal Information Service (ATIS) is out of service.
<b>SVC</b>	<b>9</b> SVC TWR 1215-0330 MON-FRI/1430-2300 SAT/000-0100 SUN TIL 0707300100 Services, the control tower has new operating hours, 1215-0300 UTC Monday Thru Friday, 1430-2300 UTC on Saturday, and 1800-0100 UTC on Sunday until 0100 UTC on July 30, 2007
	<b>10</b> SVC FUEL UNAVBL TIL 0707281800 Services all fuel for this aerodrome is unavailable until July 28, 2007 at 1800 UTC
	<b>11</b> SVC CUSTOMS UNAVBL TIL 0708130000 Services, United States Customs service for this aerodrome will not be available until August 15, 2007 at 0800 UTC
<b>AIRSPACE</b>	<b>12</b> AIRSPACE AIRSHOW ACFT 5000/BLW 5 NMR AERODROME AVOIDANCE ADZD WSP 0707132000-0707132200 Airspace, There is an airshow being held at this aerodrome with aircraft flying 5000 feet and below within a 5 nautical mile radius, avoidance is advised from 2000 UTC on July 15, 2007 until 2200 UTC on July 15, 2007

NOTE: All NOTAM "D" will have a keyword at the beginning of the text of each NOTAM.

DRAFT 07 2007



Federal Aviation  
Administration



# Summary of Changes

- **Reclassified civil Local NOTAMs**
  - All current local NOTAMs reclassified as D NOTAMs
- **Created keywords for all D NOTAMs for improved sorting and parsing**

– AD	AIRSPACE	APRON	COM
– NAV	OBST	(O)	RAMP
– RWY	SVC	TWY	(U)
- **Created central repository for all NOTAMs**
- **Standardized NOTAM policy**
- **Preparation for full ICAO format August 28, 2009**