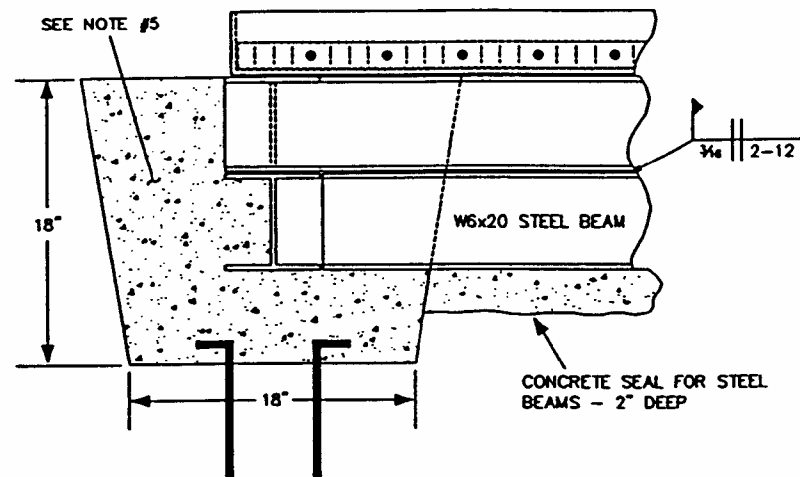


SPECIAL CONDITIONS DETAIL - SITE S-13

N.T.S.

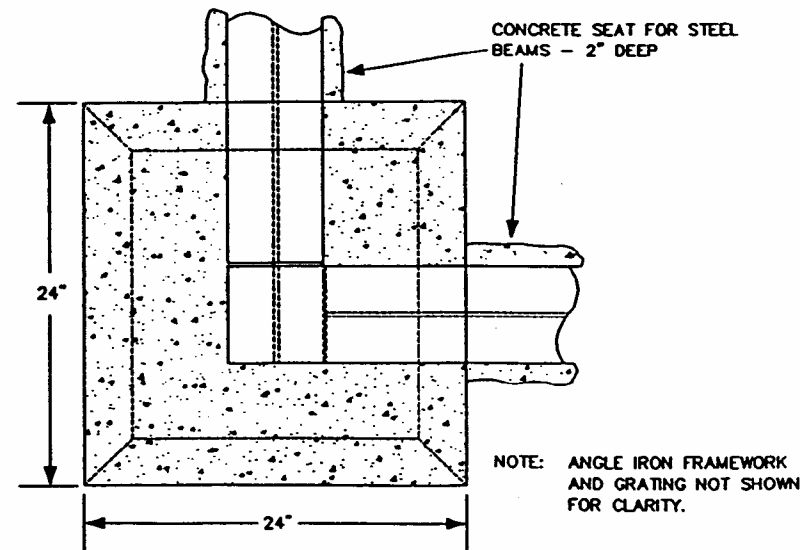
CORNER DETAIL - SIDE VIEW

N.T.S.



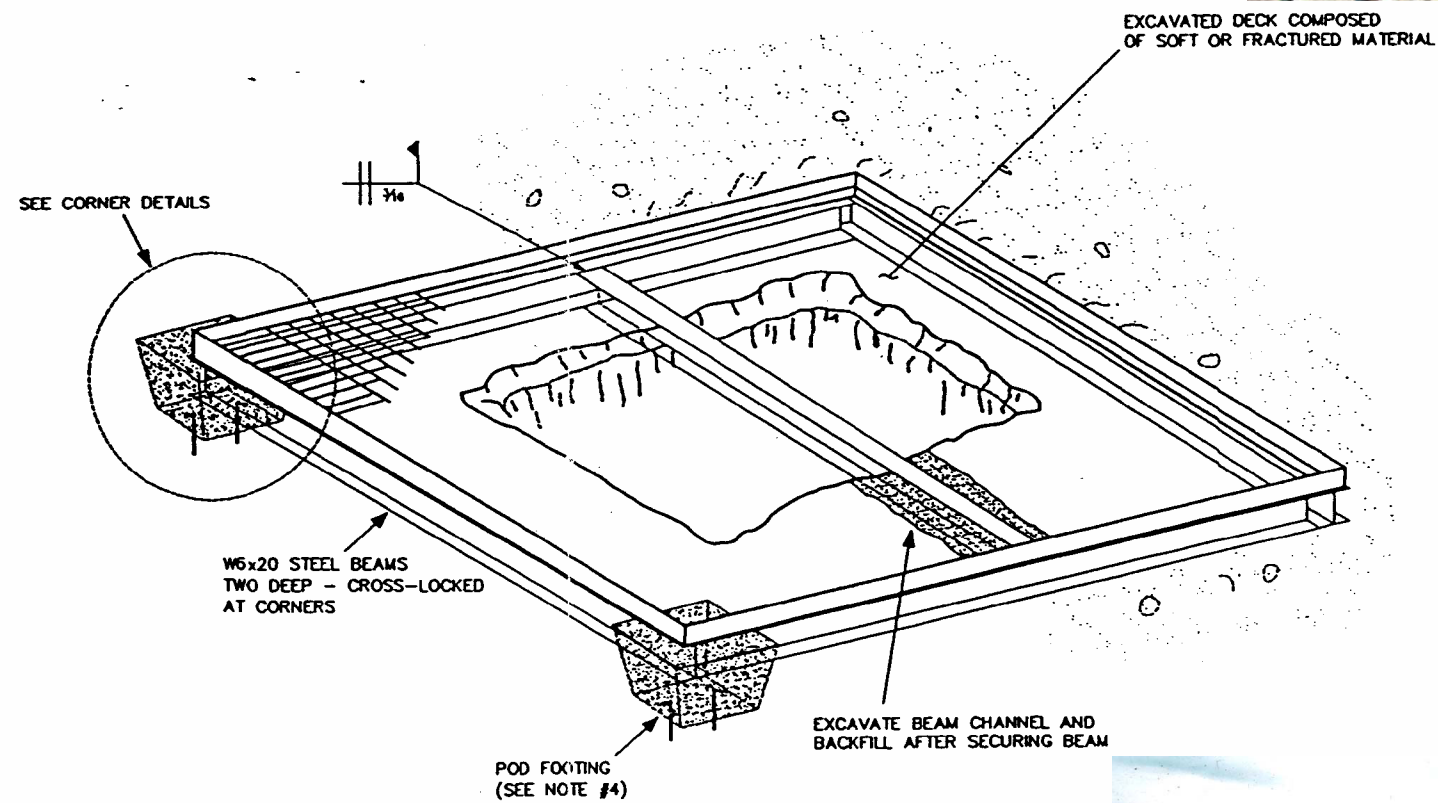
CORNER DETAIL - TOP VIEW

N.T.S.



ISOMETRIC VIEW

N.T.S.



EXCAVATED DECK COMPOSED OF SOFT OR FRACTURED MATERIAL

NOTES:

- 1) ALL STRUCTURES DEPICTED HEREON SHALL BE CONSTRUCTED AT OR BELOW THE EXISTING GRADE LINE.
- 2) PERIMETER FRAMES SHALL BE SIZED TO ACCOMMODATE FULL WIDTH GRATE PANELS ONLY.
- 3) GRATING SHALL BE SECURED TO ANGLE STEEL FRAMEWORK BY 2" WELDMENTS ON 12" CENTERS.
- 4) POD FOOTINGS SHALL BE LOCATED AT ALL CORNERS. IN THE EVENT A CORNER IS LOCATED IN COMPETENT ROCK, AN ALTERNATIVE ANCHORING METHOD MAY BE USED AT THE PROJECT MANAGER'S DIRECTION.
- 5) STEEL BEAMS SHALL BE IMBEDDED IN CONCRETE FOOTING.
- 6) STEEL GRATING SHALL BE A WELDFORGED WELDED RECTANGULAR DESIGN AS MANUFACTURED BY IKG/BORDEN INDUSTRIES TYPE WB 2" X 3/16" MAIN BEARING BARS SPACED 15/16" C.T.C. CROSS RODS SHALL BE WELDED AT RIGHT ANGLES TO MAIN BARS ON 4" CENTERS.



CAUTION- THIS PROJECT REQUIRES CONSTRUCTION WORK AROUND AND OVER HAZARDOUS AND UNPROTECTED MINE SHAFTS, STOPS, ADITS AND OTHER OPENINGS WHICH MAY BE OPEN TO THE SURFACE OR HIDDEN FROM VIEW BY TRASH, DEBRIS OR THIN AND UNSTABLE LAYERS OF SURFICIAL MATERIAL. THE CONTRACTOR SHALL BE RESPONSIBLE FOR THOROUGHLY INVESTIGATING THE SITE CONDITIONS AND SCHEDULING HIS EQUIPMENT, EQUIPMENT OPERATIONS, PERSONNEL AND SAFETY PROCEDURES TO PREVENT ACCIDENTS AND INJURIES.



RAILROAD COMMISSION OF TEXAS
 JAMES E. (JIM) RUCENT, Chairman
 BARRY WILLIAMSON, Commissioner
 MARY SCOTT HARRIS, Commissioner
 SURFACE MINING AND RECLAMATION DIVISION
 MELVIN B. BODCERS, P.E., Director

SCALE	NOT TO SCALE	DATE
DRAWN BY	I. WOOTTON	8/94
DESIGNED BY	S. TRUESDALE	8/94
CHECKED BY	S. WILEY	8/94
APPROVED BY	M. RHODES	8/94
REVISED BY		

BIG BEND NATIONAL PARK
 AML PROJECT
 DRAWING TITLE
 SPECIAL CONDITIONS DETAIL - SITE S-13
 PERSPECTIVE VIEW

DRAWING NO.
 11
 REV.