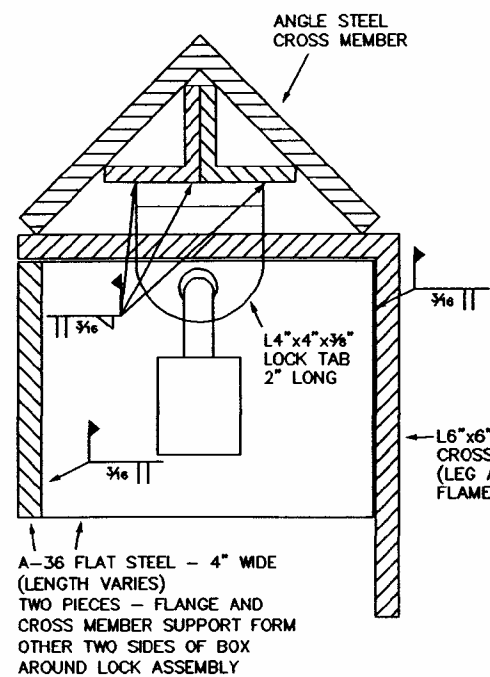


CORRUGATED STEEL/BAT GATE CLOSURE – SITE C-10

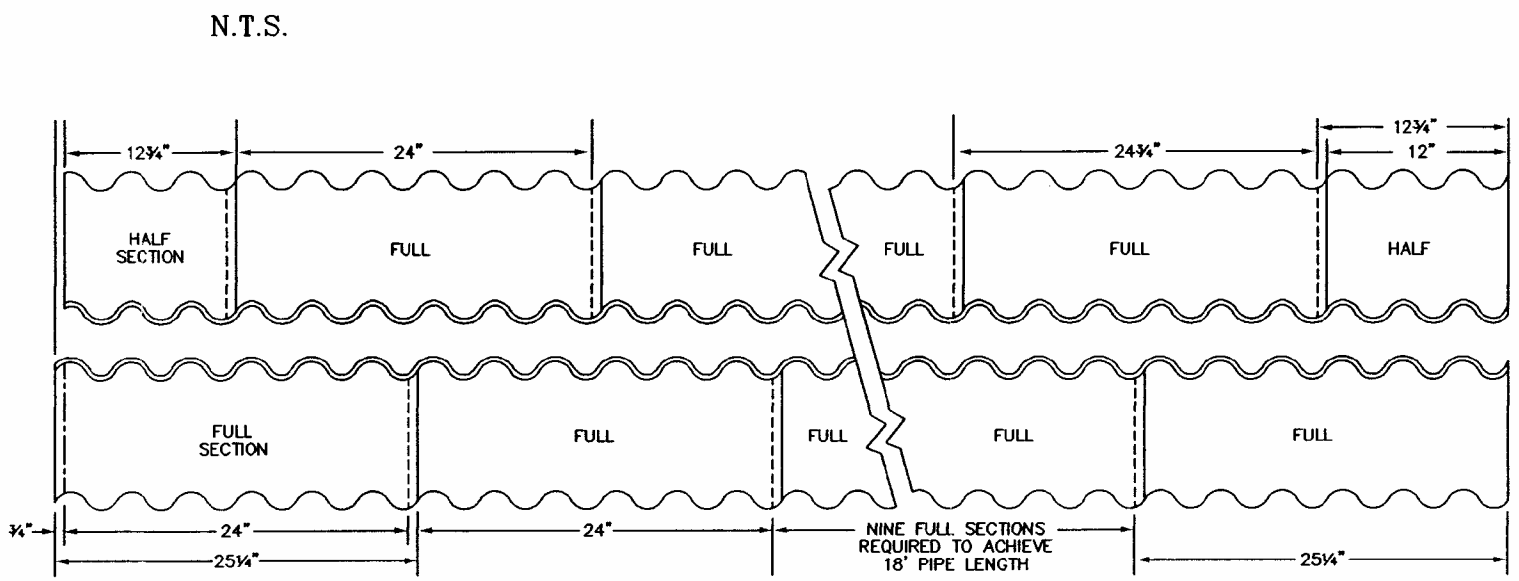
REMOVABLE BAR AND SECTIONAL PIPE DETAIL



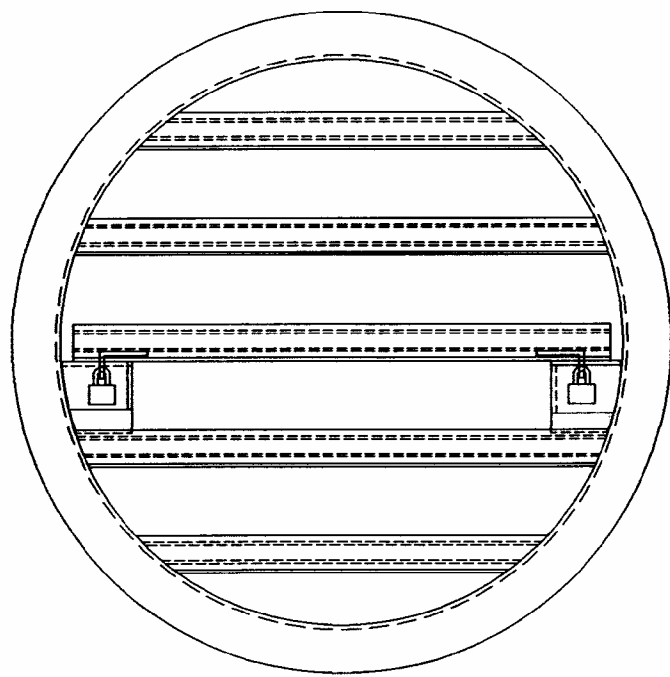
LOCK TAB DETAIL
N.T.S.



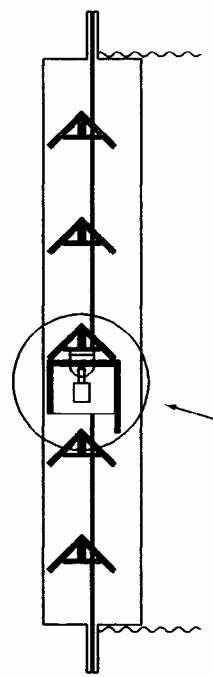
L6"x6"x3/8" ANGLE STEEL
CROSS MEMBER SUPPORT
(LEG ADJACENT TO FLANGE
FLAME CUT TO FIT)



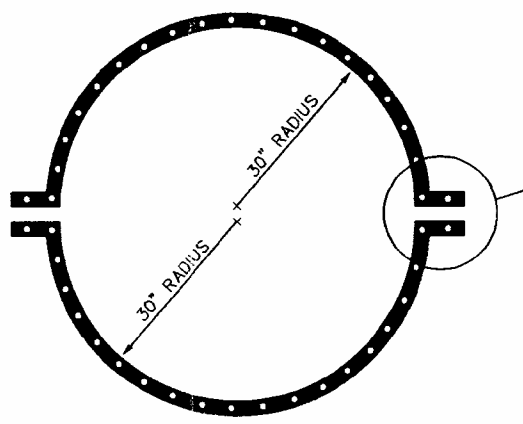
SECTIONAL PIPE ASSEMBLY DETAIL
N.T.S.



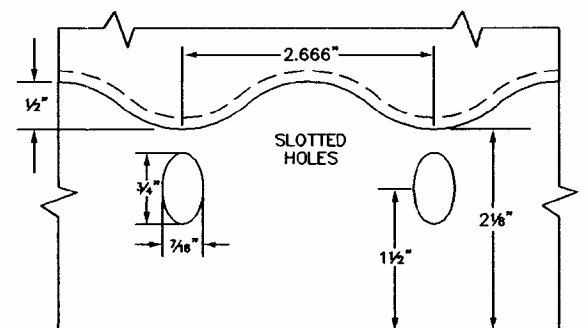
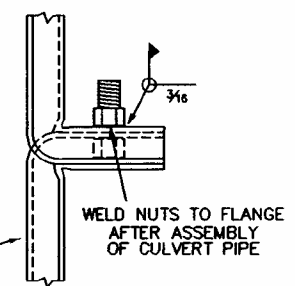
FRONT VIEW
N.T.S.



SIDE VIEW
N.T.S.



SECTIONAL PIPE CROSS SECTION
N.T.S.



based on original design by Roy Powers
and the American Cave Conservation Association

CAUTION— THIS PROJECT REQUIRES CONSTRUCTION WORK AROUND AND OVER HAZARDOUS AND UNPROTECTED MINE SHAFTS, STOPES, ADITS AND OTHER OPENINGS WHICH MAY BE OPEN TO THE SURFACE OR HIDDEN FROM VIEW BY TRASH, DEBRIS OR THIN AND UNSTABLE LAYERS OF SURFICIAL MATERIAL. THE CONTRACTOR SHALL BE RESPONSIBLE FOR THOROUGHLY INVESTIGATING THE SITE CONDITIONS AND SCHEDULING HIS EQUIPMENT, EQUIPMENT OPERATIONS, PERSONNEL AND SAFETY PROCEDURES TO PREVENT ACCIDENTS AND INJURIES.

	RAILROAD COMMISSION OF TEXAS		SCALE	NOT TO SCALE	DATE	GUADALUPE MOUNTAINS NATIONAL PARK AML PROJECT DRAWING TITLE CORRUGATED STEEL/BAT GATE CLOSURE REMOVABLE BAR AND SECTIONAL PIPE DETAIL	DRAWING NO. 4 REV.
	CAROLE KERTON RYLANDER, Chairman BARRY WILLIAMSON, Commissioner CHARLES R. MATTHEWS, Commissioner		DRAWN BY	T. WOOTTON	12/95		
	SURFACE MINING AND RECLAMATION DIVISION MELVIN B. HODGKISS, P.E., Director		DESIGNED BY	PREVIOUS	12/95		
			CHECKED BY	S. WILEY	12/95		
			APPROVED BY	M. RHODES	12/95		
		REVISED BY					