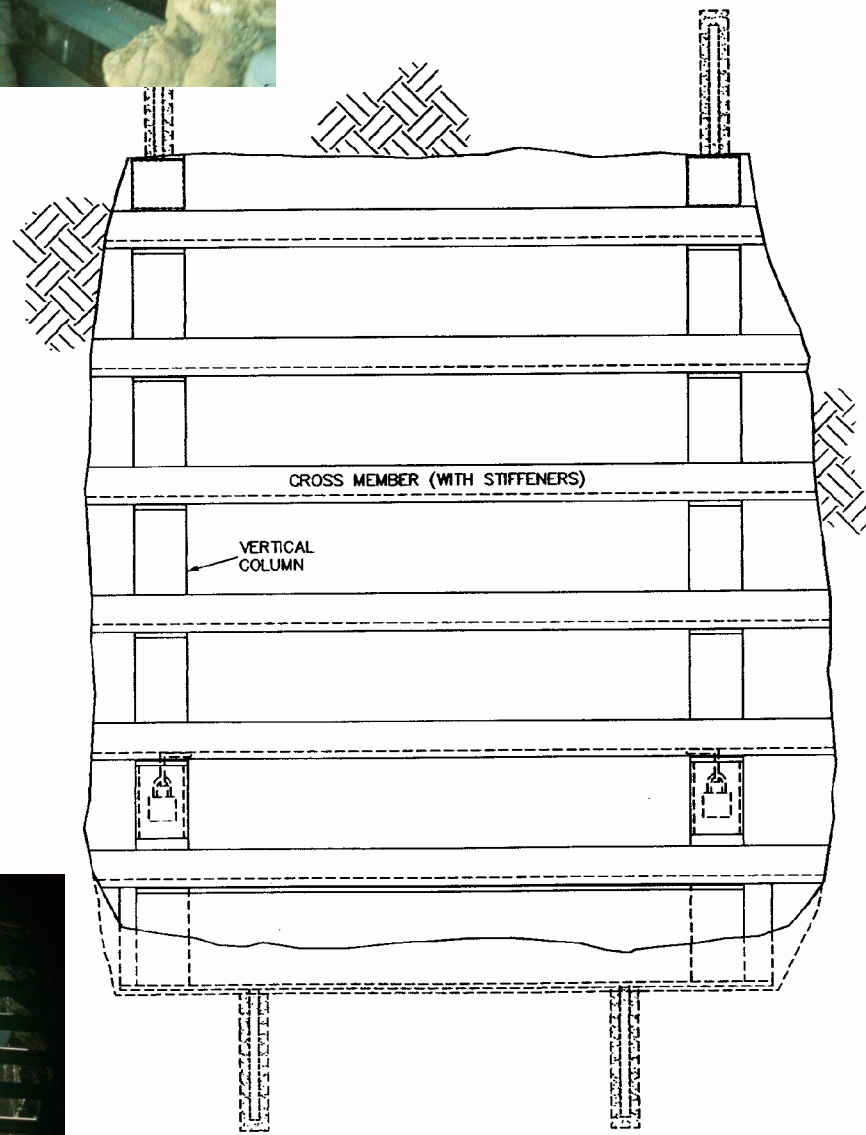




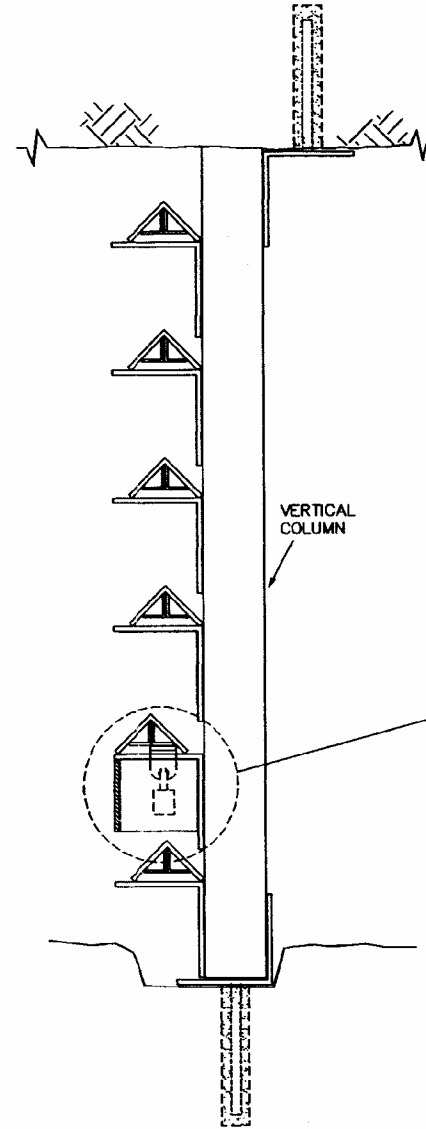
**TYPICAL REMOVABLE BAR DETAIL**  
**SITES C-3, C-4 & C-8**  
 N.T.S.



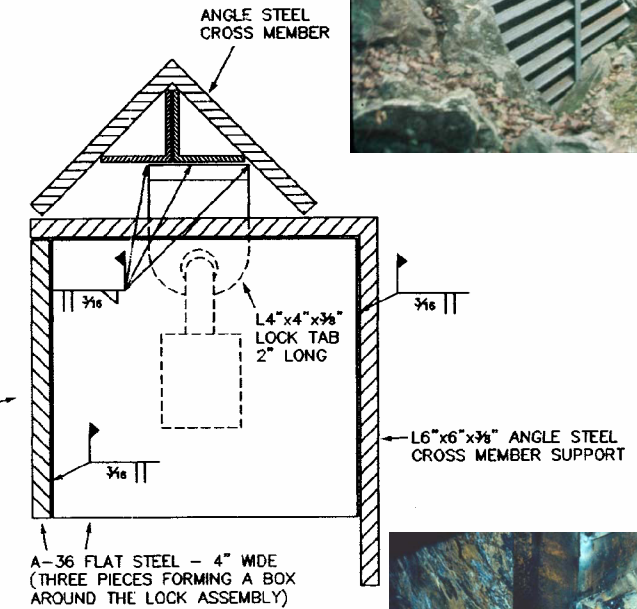
McGard bolts can be used in lieu of locks.



**FRONT VIEW**  
 N.T.S.



**SIDE VIEW**  
 N.T.S.

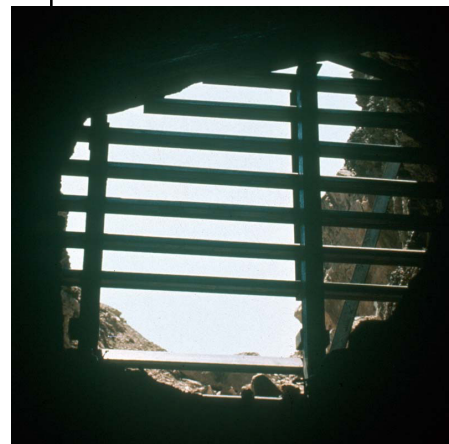


**LOCK TAB DETAIL**  
 N.T.S.



NOTE: CERTAIN COMPONENTS OF THE BAT GATE ASSEMBLY HAVE BEEN OMITTED FROM THIS DRAWING FOR CLARITY. THE ONLY REVISIONS THAT SHOULD BE INFERRED ARE THOSE TO THE HATCH AND LOCKING ASSEMBLIES. ALL OTHER CONSTRUCTION SPECIFICATIONS SHALL REMAIN AS INDICATED IN THE ORIGINAL DESIGN.

based on original design by Roy Powers  
 and the American Cave Conservation Association



**CAUTION**— THIS PROJECT REQUIRES CONSTRUCTION WORK AROUND AND OVER HAZARDOUS AND UNPROTECTED MINE SHAFTS, STOPES, ADITS AND OTHER OPENINGS WHICH MAY BE OPEN TO THE SURFACE OR HIDDEN FROM VIEW BY TRASH, DEBRIS OR THIN AND UNSTABLE LAYERS OF SURFICIAL MATERIAL. THE CONTRACTOR SHALL BE RESPONSIBLE FOR THOROUGHLY INVESTIGATING THE SITE CONDITIONS AND SCHEDULING HIS EQUIPMENT, EQUIPMENT OPERATIONS, PERSONNEL AND SAFETY PROCEDURES TO PREVENT ACCIDENTS AND INJURIES.



RAILROAD COMMISSION OF TEXAS  
 CAROLE KEETON EYLANDER, Chairman  
 BARRY WILLIAMSON, Commissioner  
 CHARLES R. MATTHEWS, Commissioner  
 SURFACE MINING AND RECLAMATION DIVISION  
 MELVIN B. HODGESS, P.E., Director

SCALE	NOT TO SCALE	DATE
DRAWN BY	T. WOOTTON	12/95
DESIGNED BY	PREVIOUS	12/95
CHECKED BY	S. WILEY	12/95
APPROVED BY	M. RHODES	12/95
REVISED BY		

GUADALUPE MOUNTAINS  
 NATIONAL PARK AML PROJECT  
 DRAWING TITLE  
 TYPICAL REMOVABLE BAR DETAIL

DRAWING NO.	REV.
2	1