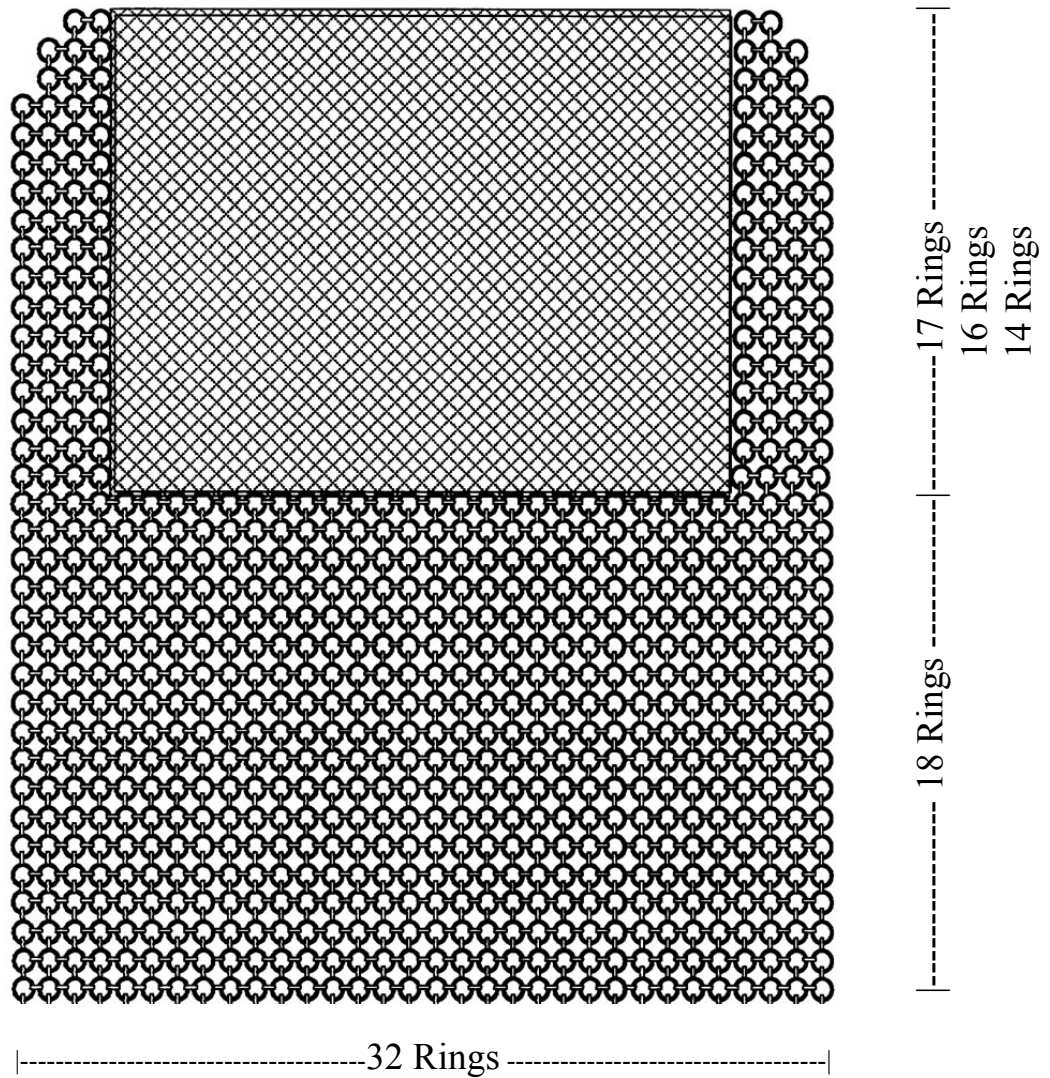


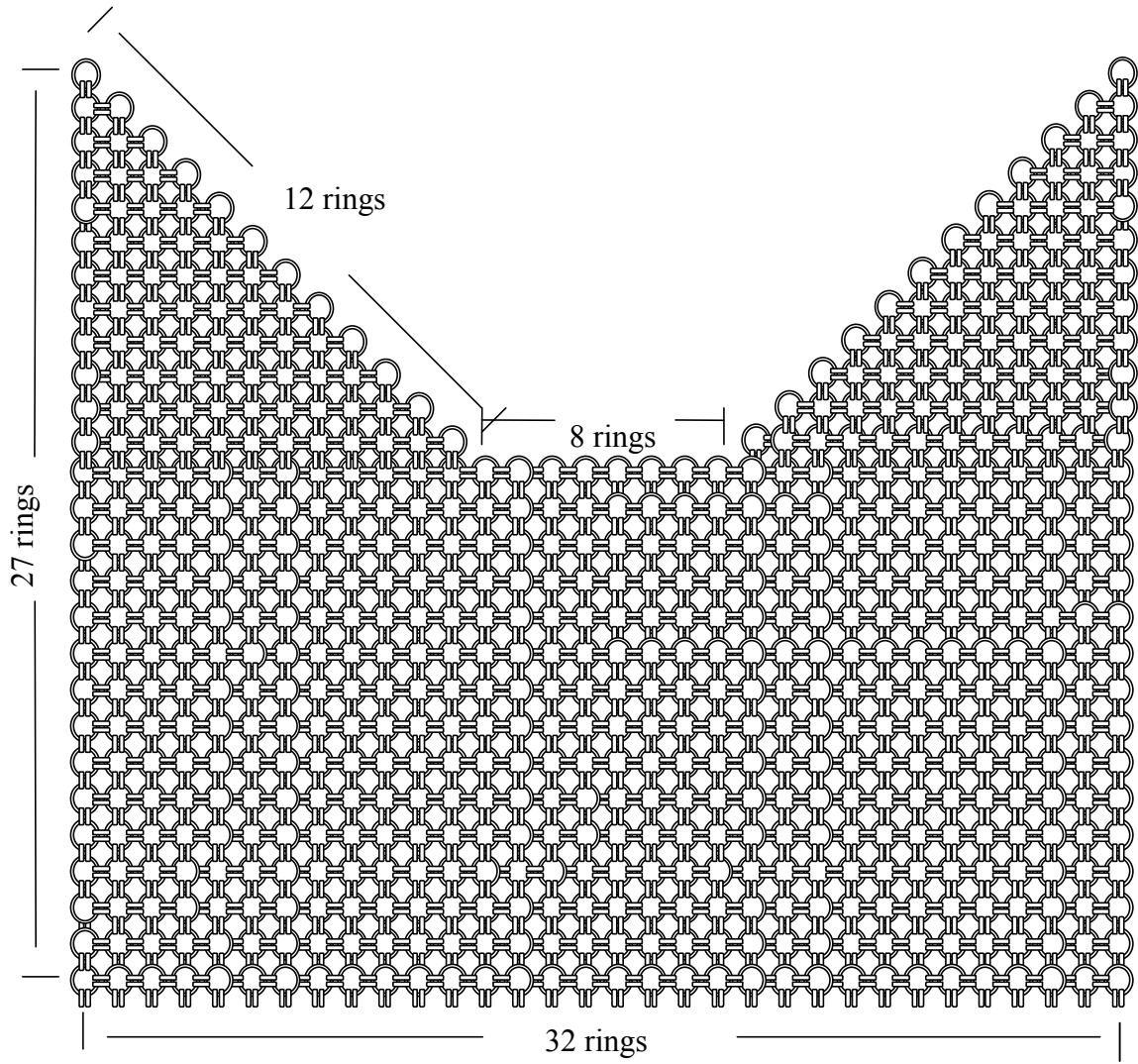
Specifications for Construction of NEFSC Standard Scallop Dredge

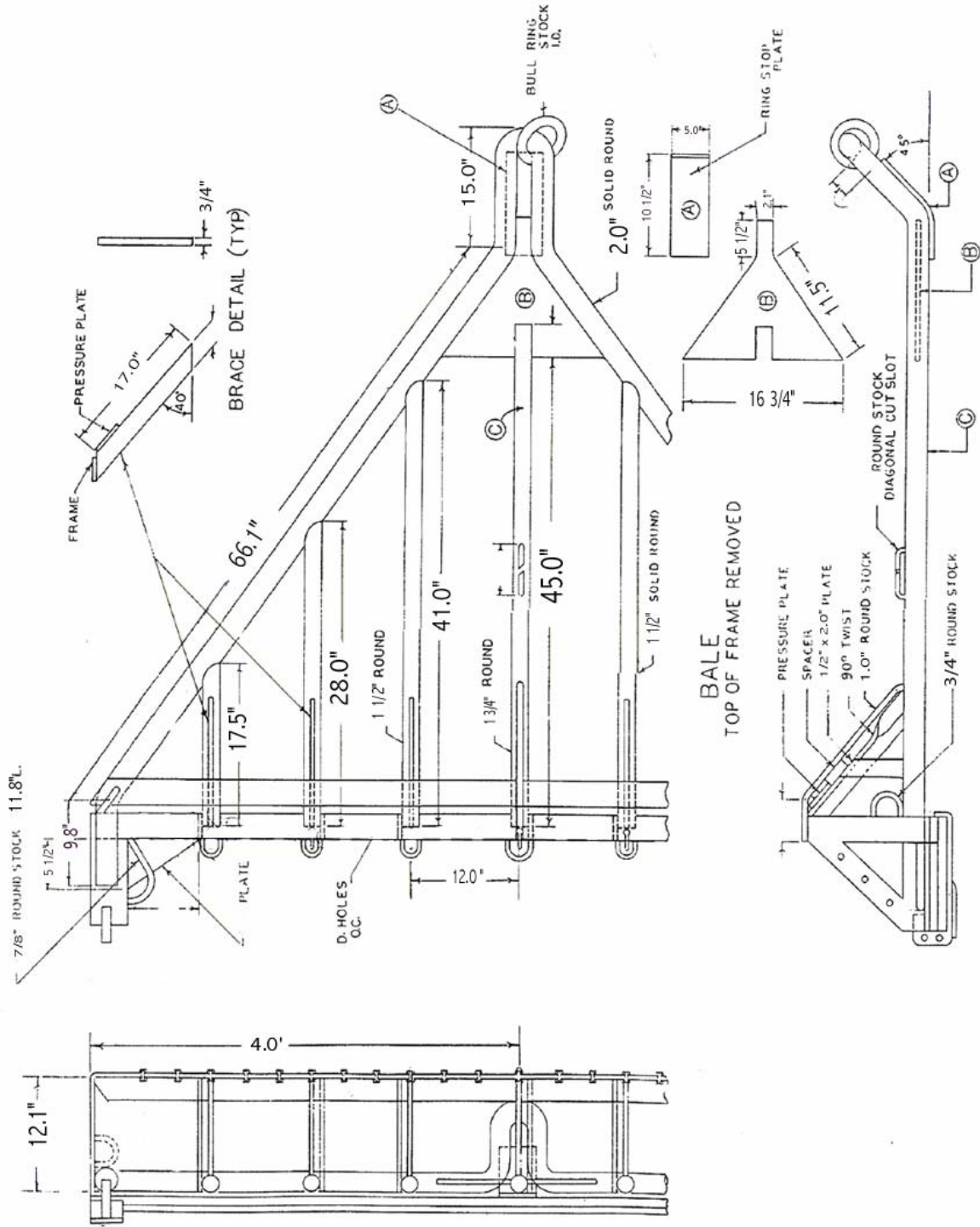
COMMENTS NET ID _____ DATE _____ INSPECTOR _____

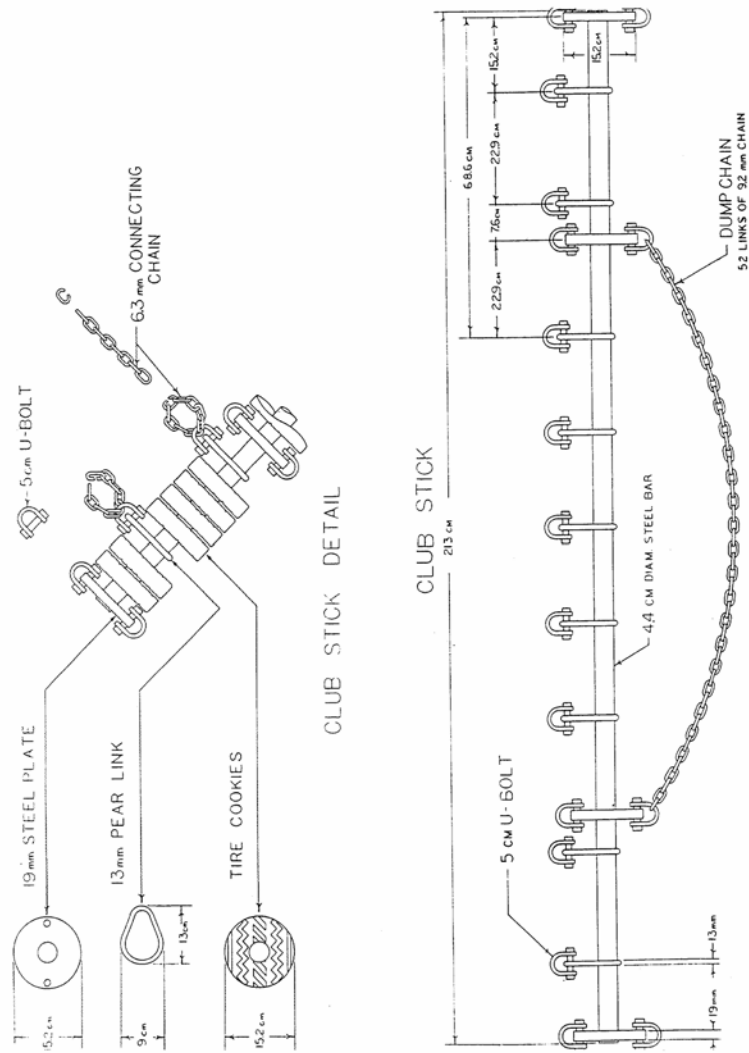
Body of dredge

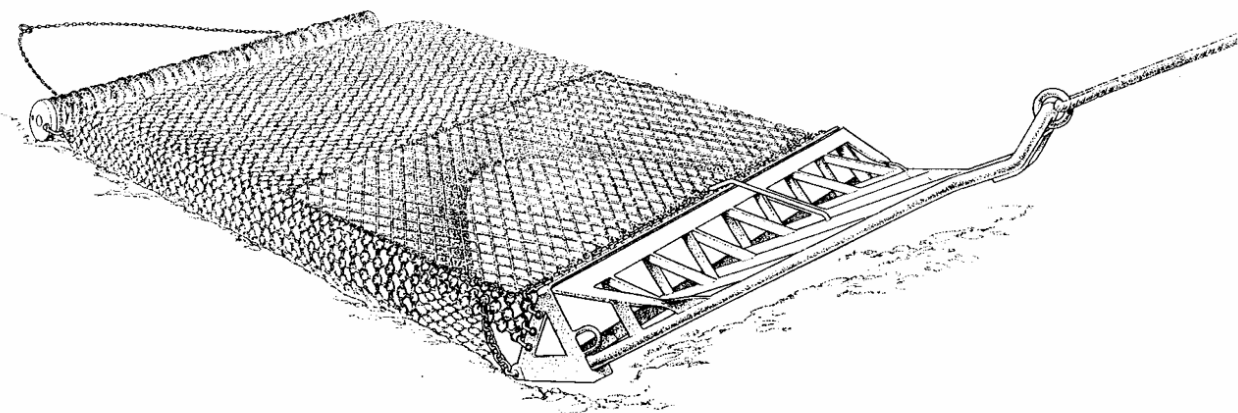
Dimensions of the sections are shown on the attached plan. Rings for the dredge are two inch by 5/16".











Apron (top)	32 rings x 18 rings
Bag (bottom)	32 rings x 15 rings
Front length	6'3" long (from eye to bag attachment)
Front width	8' wide
Rings	2" x 5/16"
Sweep chain	77 links of 5/8" casehardened steel
Top twine	4" SM. nylon with 1 1/2" Poly - 63" deep
Weight	1425 lbs.
Liner	1 1/2" polyethylene #21 twine (2.2 mm)