



# Federal Geographic Data Committee Overview

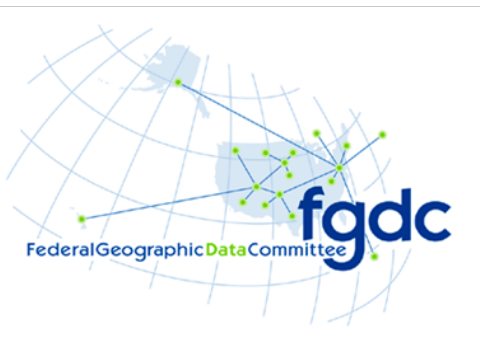
FGDC Steering Committee  
June 7, 2011

Ivan DeLoatch, Executive Director  
FGDC Secretariat, USGS

# What is the FGDC?

---

- ◆ FGDC is a Federal interagency committee responsible for leading and facilitating the coordinated development, use, sharing, and dissemination of geospatial data on a national basis
- ◆ Provides executive direction, guidance, and oversight for geospatial policy decisions and initiatives across the Federal government
- ◆ Facilitates coordination between agencies, governments, academia, industry and professional organizations in developing geographic information and technology
- ◆ Promotes the efficient, transparent, accountable, and effective use of geospatial information in meeting national requirements
- ◆ Acts as the interagency coordinating body for National Spatial Data Infrastructure (NSDI)-related activities



# Policy, Guidance, and Mandate

## ◆ OMB Circular A-16

- 1990: Formally established FGDC and designated Secretary of the Interior as Chair
- 2002: Revised and established OMB as Vice Chair
- 2010: OMB Circular A-16 Supplemental Guidance

## ◆ Executive Order 12906

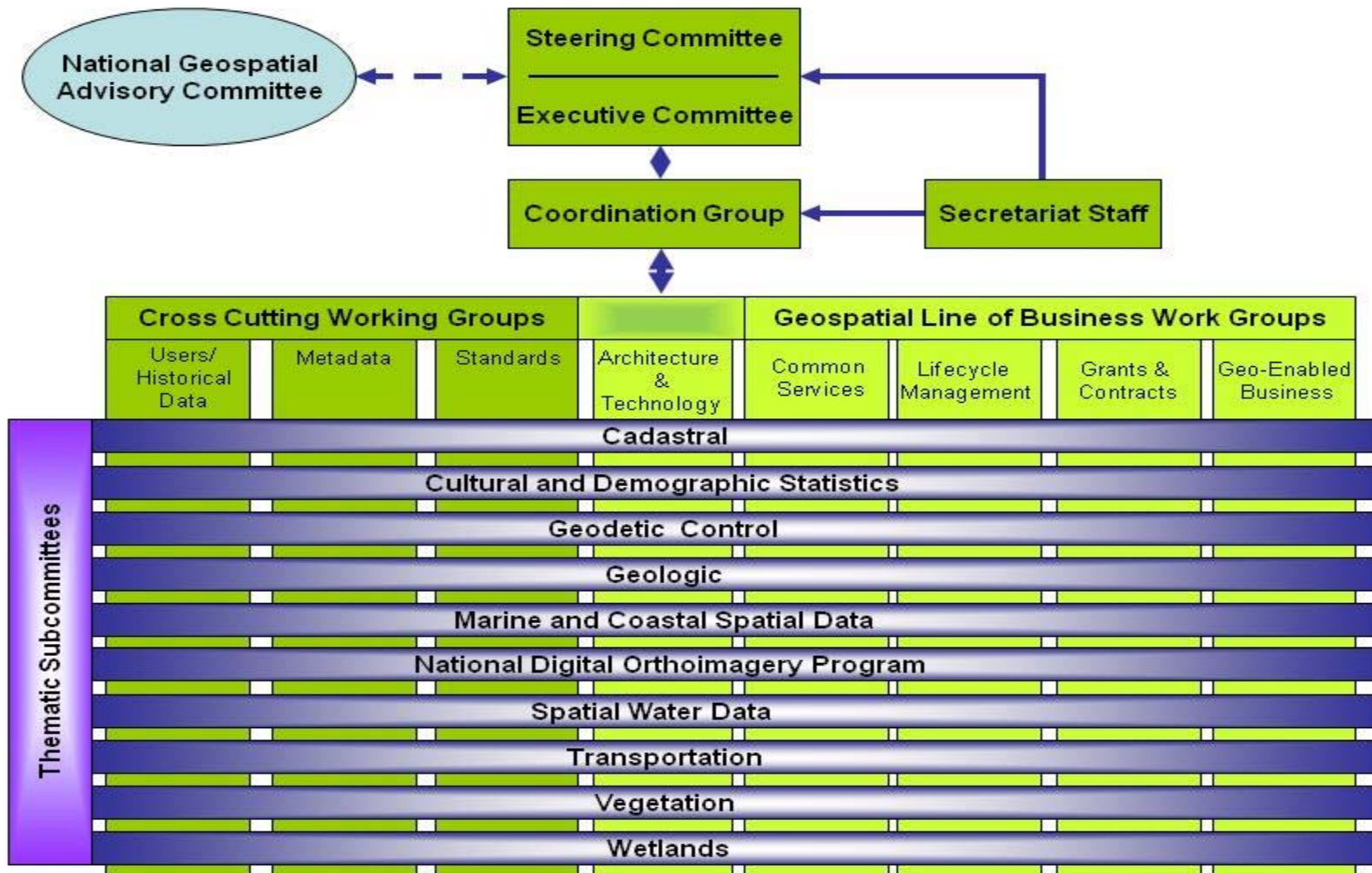
- 1994: Called for development of National Spatial Data Infrastructure (NSDI) and assigned FGDC to lead and coordinate
- 2003: Revised and recognized Department of Homeland Security

## ◆ E-Government Act, Section 216

- 2002: Called for DOI, through the FGDC, to develop common protocols for geographic information



# FGDC Organizational Overview



# What is the NSDI?

*“... the technology policies, standards, human resources, and related activities necessary to acquire, process, distribute, use, maintain, and preserve spatial data.” (OMB Circular A-16)*

## ◆ Major Components:

- The organizations and individuals who generate or use geographic data;
  - The technologies that facilitate the use and transfer of geographic data; and
  - The actual data.
- ◆ The NSDI is a cooperative effort involving federal, state, and local government, the private sector, and academia. The FGDC is charged with providing the federal leadership for evolving the NSDI.



# FGDC Enterprise Initiatives



# Recent FGDC Activities and Achievements

---

- ◆ Support for Recovery.gov
- ◆ Support for Data.gov
- ◆ Support to agencies implementing the Administration's Place-Based policy
- ◆ Established the National Geospatial Advisory Committee as advisory body
- ◆ Launched the GeoCloud Computing Pilot
- ◆ Completed the OMB Circular A-16 Supplemental Guidance
- ◆ Endorsed over 70 technical and content standards
- ◆ Completed the Modernization Roadmap for the Geospatial Platform



# Thank You

# Questions?

Ivan DeLoatch, Executive Director

FGDC Secretariat, USGS

703-648-5752

[ideloatch@fgdc.gov](mailto:ideloatch@fgdc.gov)

