



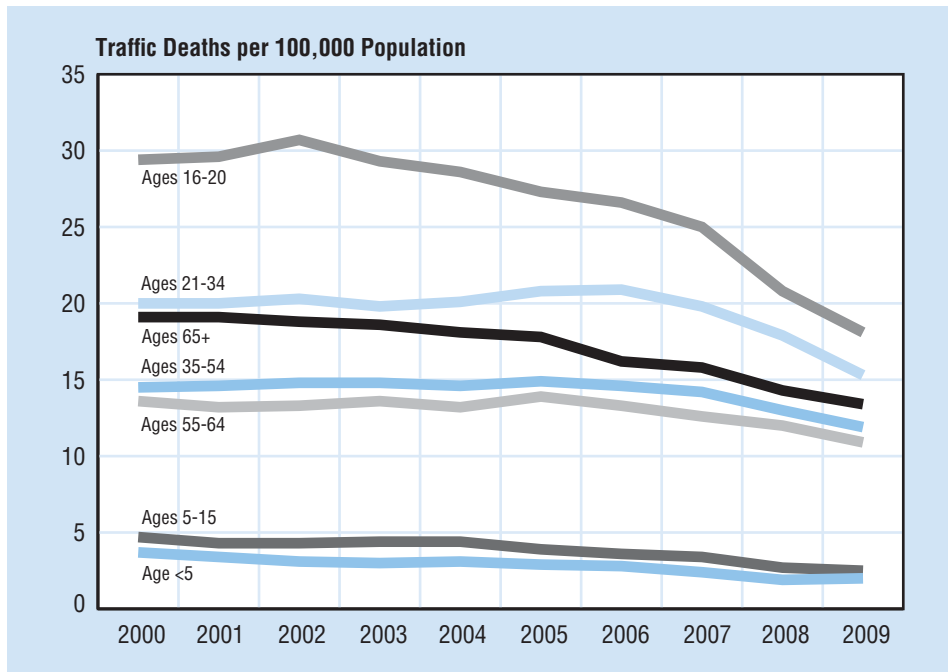
## Older Population

This fact sheet focuses on the older population in the United States which includes all people age 65 and older. In 2009, 13 percent of the total U.S. resident population (40 million) were people age 65 and older.

In 2009, 5,288 people age 65 and older were killed and 187,000 were injured in traffic crashes. These older individuals made up 16 percent of all traffic fatalities and 8 percent of all people injured in traffic crashes during the year. Compared to 2008, fatalities among people age 65 and older decreased by 5 percent. Among people injured in this age group there was a 2-percent increase from 2008.

*In 2009, 16 percent of all traffic fatalities in the United States were among people age 65 and older.*

Figure 1  
**Motor Vehicle Traffic Fatality Rates by Age Group, 2000-2009**



Over three-fourths (79%) of all older occupants of passenger vehicles involved in fatal crashes were using restraints at the time of the crash, compared to 64 percent for other adult occupants (18 to 64 years old).

Table 1  
**Involvement of the Older Population in Traffic Fatalities by Sex, 2000 and 2009**

	2000			2009			Percentage Change, 2000-2009	
	Total	Age 65+	Percentage of Total	Total	Age 65+	Percentage of Total	Total	Age 65+
<b>Population (Thousands)</b>								
Total*	282,172	35,074	12.4	307,007	39,571	12.9	9	13
Male	138,459	14,454	10.4	151,449	16,824	11.1	9	16
Female	143,713	20,620	14.3	155,557	22,747	14.6	8	10
<b>Drivers Involved in Fatal Crashes</b>								
Total*	57,280	6,281	11.0	45,230	5,418	12.0	-21	-14
Male	41,795	4,272	10.2	32,807	3,737	11.4	-22	-13
Female	14,790	2,009	13.6	11,825	1,679	14.2	-20	-16
<b>Driver Fatalities</b>								
Total*	25,567	3,997	15.6	21,798	3,297	15.1	-15	-18
Male	18,939	2,683	14.2	16,678	2,266	13.6	-12	-16
Female	6,627	1,314	19.8	5,115	1,031	20.2	-23	-22
<b>Total Traffic Fatalities</b>								
Total*	41,945	6,701	16.0	33,808	5,288	15.6	-19	-21
Male	28,545	3,791	13.3	23,726	3,170	13.4	-17	-16
Female	13,396	2,910	21.7	10,070	2,118	21.0	-25	-27
<b>Occupant Fatalities</b>								
Total*	36,348	5,623	15.5	28,936	4,401	15.2	-20	-22
Male	24,571	3,150	12.8	20,250	2,600	12.8	-18	-17
Female	11,773	2,473	21.0	8,675	1,801	20.8	-26	-27
<b>Pedestrian Fatalities</b>								
Total	4,763	996	20.9	4,092	775	18.9	-14	-22
Male	3,251	568	17.5	2,814	472	16.8	-13	-17
Female	1,512	428	28.3	1,277	303	23.7	-16	-29

\*Total includes unknown gender.

Among the 65-and-older age group, from 2000 to 2009, the total population increased by 13 percent (increased for males by 16% and for females by 10%). However, driver fatalities for this age group declined by 18 percent (decreased for males by 16% and for females by 22%).

*Older drivers made up 15 percent of all licensed drivers in 2008, compared with 14 percent in 1999.*

## Drivers

There were 32 million licensed older drivers in 2008 (latest data available)—a 20-percent increase from 1999. In contrast, the total number of licensed drivers increased by only 11 percent from 1999 to 2008. Older drivers made up 15 percent of all licensed drivers in 2008, compared with 14 percent in 1999.

Most traffic fatalities involving older drivers in 2009 occurred during the daytime (81%), occurred on weekdays (71%), and involved other vehicles (69%).

As shown in Table 2, of all drivers, older drivers involved in fatal crashes had the lowest proportion of total drivers with blood alcohol concentration (BAC) of .08 grams per deciliter (g/dL) or higher.

Table 2

**Age and Alcohol of Drivers Involved in Fatal Crashes, 2009**

Age Group (Years)	Total	BAC= .08+	
		Number	Percent of Total
<16	181	13	7
16-20	5,051	951	19
21-34	13,207	4,310	33
35-54	15,421	3,700	24
55-64	5,276	669	13
65+	5,418	284	5
<b>Total</b>	<b>*45,230</b>	<b>10,102</b>	<b>22</b>

\*Includes 676 drivers of unknown age.

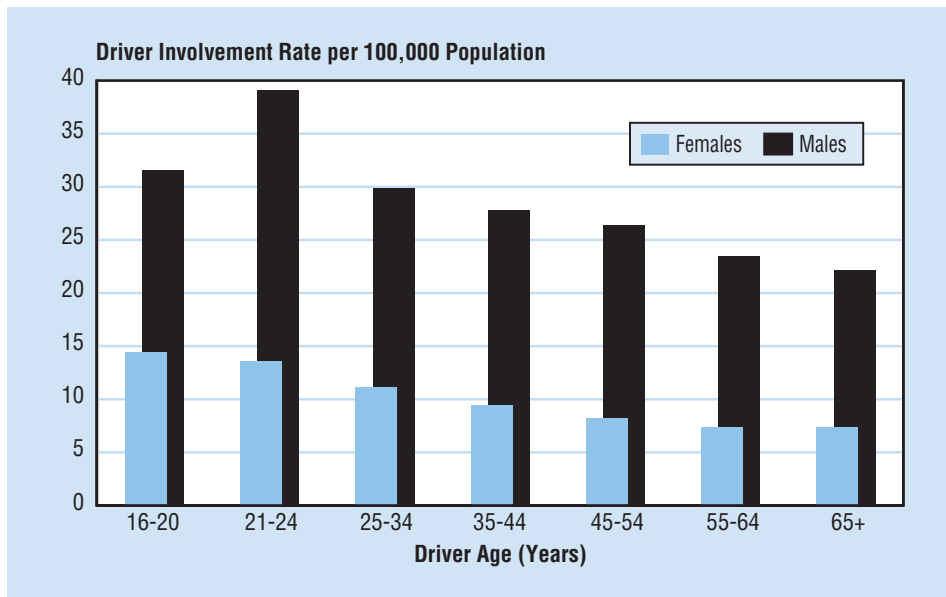
Table 3

**Fatalities in Crashes Involving Drivers Age 65 and Older, 2000–2009**

Year	2000	2001	2002	2003	2004	2005	2006	2007	2008	2009
Fatalities	6,726	6,742	6,663	6,805	6,585	6,647	6,334	6,169	5,825	5,593

People killed in crashes involving an older driver declined by 17 percent from 6,726 in 2000 to 5,593 in 2009. Since 2008, people killed in crashes involving an older driver declined by 4 percent.

Figure 2

**Driver Involvement Rates in Fatal Crashes by Age and Sex, 2009**

In two-vehicle fatal crashes involving an older driver and a younger driver, the vehicle driven by the older person was 1.7 times more likely to be the one that was struck (58% and 34%, respectively). In 46 percent of these crashes, both vehicles were proceeding straight at the time of the collision. In 24 percent, the older driver was turning left – 4 times more often than the younger driver.

*In two-vehicle fatal crashes involving an older driver and a younger driver, the vehicle driven by the older person was 1.7 times as likely to be the one that was struck.*

*For older pedestrians, 64 percent of fatalities in 2009 occurred at non-intersection locations.*

## Pedestrians

For older people, 64 percent of pedestrian fatalities in 2009 occurred at non-intersection locations. For other pedestrians, 78 percent of fatalities occurred at non-intersection locations.

Among all fatally injured adult pedestrians, older pedestrians had the lowest proportion of pedestrians with BAC of .08 g/dL or higher.

Table 4  
**Age and Alcohol of Pedestrian Fatalities, 2009**

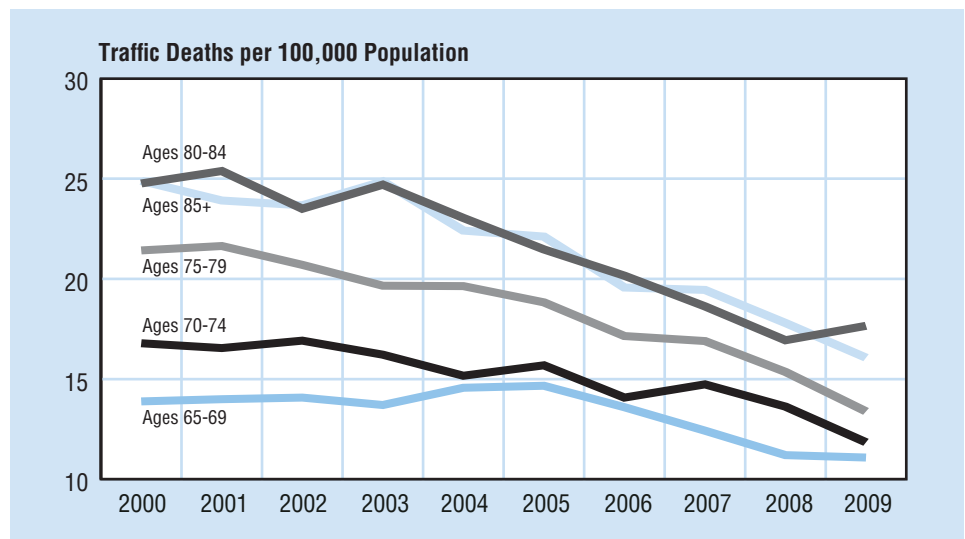
Age Group (Years)	Total	BAC= .08+	
		Number	Percent of Total
<16	276	6	2
16-20	232	56	24
21-34	811	399	49
35-54	1,418	704	50
55-64	558	170	31
65+	775	73	9
<b>Total</b>	<b>*4,092</b>	<b>1,416</b>	<b>35</b>

\*Includes 22 pedestrian fatalities of unknown age.

## Older Population Age Groups

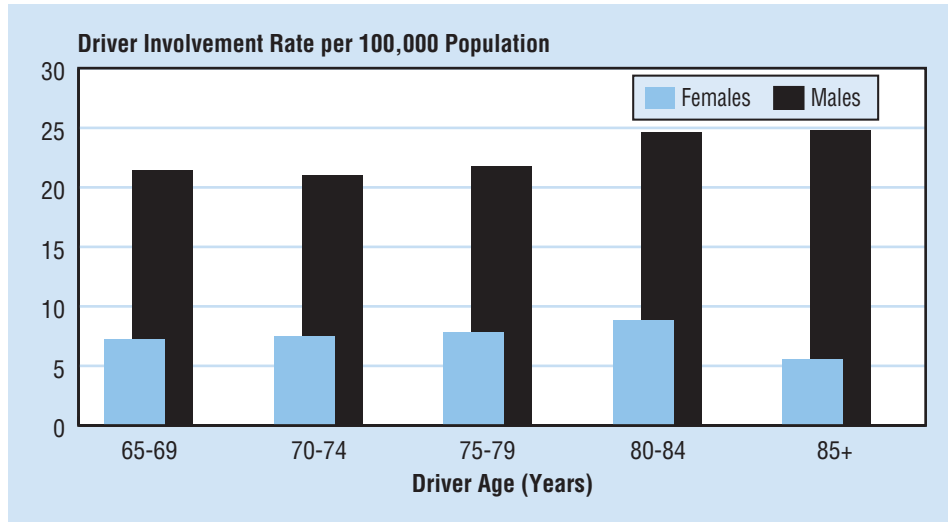
In 2009, among the older population, the fatality rate for the 80-84 age group was 17.66 per 100,000 population, which was higher than any other age group.

Figure 3  
**Motor Vehicle Traffic Fatality Rates Among Older Population by Age Group, 2000-2009**



In 2009, driver involvement rates per 100,000 population among older male drivers was highest (24.79) in the 85-and-older age group; and among older female drivers was highest in the 80-84 age group (8.83).

Figure 4  
**Involvement Rates for Older Drivers in Fatal Crashes by Age Group and Sex, 2009**



### For more information:

Information on traffic fatalities is available from the National Center for Statistics and Analysis (NCSA), NVS-424, 1200 New Jersey Avenue SE., Washington, DC 20590. NCSA can be contacted at 800-934-8517 or via the following e-mail address: [ncsaweb@dot.gov](mailto:ncsaweb@dot.gov). General information on highway traffic safety can be accessed by Internet users at [www.nhtsa.gov/NCSA](http://www.nhtsa.gov/NCSA). To report a safety-related problem or to inquire about motor vehicle safety information, contact the Vehicle Safety Hotline at 888-327-4236.

Other fact sheets available from the National Center for Statistics and Analysis are *Alcohol*, *African American*, *Bicyclists and Other Cyclists*, *Children*, *Hispanic*, *Large Trucks*, *Motorcycles*, *Occupant Protection*, *Overview*, *Pedestrians*, *Race and Ethnicity*, *Rural/Urban Comparisons*, *School Transportation-Related Crashes*, *Speeding*, *State Alcohol Estimates*, *State Traffic Data*, and *Young Drivers*. Detailed data on motor vehicle traffic crashes are published annually in *Traffic Safety Facts: A Compilation of Motor Vehicle Crash Data from the Fatality Analysis Reporting System and the General Estimates System*. The fact sheets and annual Traffic Safety Facts report can be accessed online at [www-nrd.nhtsa.dot.gov/CATS/index.aspx](http://www-nrd.nhtsa.dot.gov/CATS/index.aspx).

Table 5  
**Driver Involvement in Fatal Traffic Crashes by State and Age Group, 2009**

State	Total*	Total 65+	Percentage of Total	Age Group (Years)								
				<16	16-20	21-34	35-54	55-69	70-74	75-79	80-84	85+
Alabama	1,137	135	11.9	6	134	311	403	176	33	29	21	12
Alaska	88	8	9.1	0	10	29	32	13	1	1	2	0
Arizona	981	120	12.2	4	90	296	312	147	26	18	18	18
Arkansas	770	86	11.2	7	82	223	289	116	24	14	10	3
California	4,180	401	9.6	8	421	1,345	1,429	599	83	61	68	56
Colorado	653	73	11.2	2	62	189	245	99	16	13	14	10
Connecticut	300	27	9.0	1	31	112	92	43	6	8	3	3
Delaware	154	20	13.0	0	23	44	55	14	6	5	4	2
Dist of Columbia	37	1	2.7	0	2	16	13	1	0	0	0	1
Florida	3,487	469	13.4	12	350	1,030	1,129	547	113	72	82	63
Georgia	1,741	204	11.7	5	143	549	597	284	57	30	32	21
Hawaii	139	7	5.0	1	15	51	42	23	1	1	1	0
Idaho	287	43	15.0	6	37	68	100	44	14	5	8	3
Illinois	1,296	155	12.0	3	118	414	439	179	30	38	26	23
Indiana	991	118	11.9	4	112	268	365	153	30	17	22	11
Iowa	503	73	14.5	9	55	133	178	68	21	17	13	8
Kansas	498	72	14.5	5	65	147	156	65	22	10	11	15
Kentucky	1,110	142	12.8	4	129	318	379	180	36	27	24	11
Louisiana	1,032	107	10.4	4	129	334	354	119	26	16	23	10
Maine	236	33	14.0	0	20	70	83	36	9	7	4	7
Maryland	776	98	12.6	0	91	221	269	115	26	15	16	10
Massachusetts	437	61	14.0	1	48	146	131	65	12	12	10	9
Michigan	1,239	179	14.4	5	146	317	423	192	21	42	38	25
Minnesota	551	82	14.9	1	68	129	194	97	16	12	19	11
Mississippi	857	93	10.9	14	111	244	298	118	23	17	14	13
Missouri	1,141	150	13.1	5	142	306	386	192	27	34	19	19
Montana	271	37	13.7	3	38	71	94	38	11	10	6	0
Nebraska	327	36	11.0	8	47	92	109	41	5	7	8	7
Nevada	335	35	10.4	1	36	88	127	57	9	8	2	2
New Hampshire	144	20	13.9	0	16	27	59	29	4	2	5	2
New Jersey	824	135	16.4	0	81	206	292	127	26	27	20	25
New Mexico	454	56	12.3	1	54	136	142	73	16	8	14	5
New York	1,514	186	12.3	2	174	446	511	202	41	36	37	26
North Carolina	1,772	202	11.4	7	199	524	591	283	51	48	26	20
North Dakota	168	24	14.3	1	19	48	46	32	5	7	4	5
Ohio	1,423	178	12.5	3	172	339	536	235	41	26	31	25
Oklahoma	942	119	12.6	4	111	255	340	147	28	17	20	10
Oregon	487	72	14.8	1	45	139	168	78	11	14	11	12
Pennsylvania	1,722	271	15.7	2	197	442	589	274	58	62	51	35
Rhode Island	99	15	15.2	0	11	25	39	13	2	1	4	2
South Carolina	1,151	133	11.6	3	125	333	384	212	29	28	18	15
South Dakota	143	16	11.2	2	18	42	43	29	1	5	0	3
Tennessee	1,305	162	12.4	5	144	387	435	212	37	39	23	15
Texas	4,163	350	8.4	17	511	1,338	1,428	559	89	70	42	30
Utah	345	36	10.4	2	48	93	126	53	6	8	5	3
Vermont	97	16	16.5	0	10	13	43	21	2	3	1	4
Virginia	965	128	13.3	0	111	299	303	157	28	25	19	16
Washington	634	62	9.8	2	88	201	192	108	9	11	6	10
West Virginia	449	58	12.9	2	52	127	137	92	11	12	5	10
Wisconsin	727	100	13.8	8	84	189	242	133	26	17	16	12
Wyoming	148	14	9.5	0	26	37	52	26	3	1	2	1
<b>U.S. Total</b>	<b>45,230</b>	<b>5,418</b>	<b>12.0</b>	<b>181</b>	<b>5,051</b>	<b>13,207</b>	<b>15,421</b>	<b>6,916</b>	<b>1,228</b>	<b>1,013</b>	<b>878</b>	<b>659</b>
Puerto Rico	472	35	7.4	2	48	193	124	45	14	6	4	3

\*Includes drivers of unknown age. U.S. had 676 drivers of unknown age.

Table 6  
**Fatalities in Traffic Crashes by State and Age Group, 2009**

State	Total*	Total 65+	Percentage of Total	Age Group (Years)								
				<16	16-20	21-34	35-54	55-69	70-74	75-79	80-84	85+
Alabama	848	133	15.7	43	112	204	251	133	31	23	28	16
Alaska	64	7	10.9	5	8	18	22	7	2	0	2	0
Arizona	807	126	15.6	50	71	209	238	132	29	16	29	23
Arkansas	585	79	13.5	28	59	151	196	100	20	15	11	4
California	3,081	467	15.2	159	351	865	892	464	83	83	88	92
Colorado	465	69	14.8	17	45	126	149	75	17	13	12	11
Connecticut	223	24	10.8	5	30	74	62	31	4	5	7	4
Delaware	116	21	18.1	13	13	26	38	9	8	3	3	3
Dist of Columbia	29	2	6.9	1	2	11	10	3	0	0	0	1
Florida	2,558	447	17.5	86	251	678	803	400	98	72	83	83
Georgia	1,284	201	15.7	55	113	353	386	236	56	28	32	23
Hawaii	109	10	9.2	4	16	38	30	15	0	2	2	2
Idaho	226	37	16.4	16	28	47	69	41	7	4	9	5
Illinois	911	153	16.8	36	98	255	278	119	23	34	33	35
Indiana	693	118	17.0	34	78	190	214	93	19	20	28	16
Iowa	372	65	17.5	19	37	89	119	57	22	10	10	8
Kansas	386	71	18.4	15	55	109	96	53	19	10	12	17
Kentucky	791	127	16.1	31	84	221	239	115	32	26	29	14
Louisiana	821	83	10.1	47	114	232	272	95	18	13	19	10
Maine	159	29	18.2	4	17	43	44	28	5	6	4	8
Maryland	547	92	16.8	18	66	140	167	86	18	12	22	14
Massachusetts	334	54	16.2	13	34	98	98	56	10	4	13	8
Michigan	871	167	19.2	35	110	199	266	130	17	38	42	33
Minnesota	421	84	20.0	22	42	85	128	72	15	14	20	23
Mississippi	700	79	11.3	41	97	189	216	95	16	15	15	16
Missouri	878	138	15.7	35	107	225	276	129	22	33	21	29
Montana	221	32	14.5	12	32	59	64	33	10	5	5	1
Nebraska	223	36	16.1	12	30	59	68	25	7	6	10	6
Nevada	243	34	14.0	12	28	60	76	47	6	6	6	2
New Hampshire	110	21	19.1	4	14	16	37	25	4	2	5	3
New Jersey	583	137	23.5	17	54	138	165	95	28	30	27	29
New Mexico	361	52	14.4	25	45	90	111	43	14	9	12	8
New York	1,156	235	20.3	58	130	307	290	175	46	37	53	49
North Carolina	1,314	192	14.6	58	165	363	384	193	38	45	34	32
North Dakota	140	24	17.1	6	20	34	37	23	0	10	4	6
Ohio	1,021	172	16.8	45	124	230	337	153	34	32	35	31
Oklahoma	738	119	16.1	44	88	180	237	110	23	16	25	15
Oregon	377	62	16.4	14	45	94	117	62	10	13	12	10
Pennsylvania	1,256	246	19.6	40	152	316	380	167	42	57	51	50
Rhode Island	83	18	21.7	1	14	18	28	10	4	2	3	3
South Carolina	894	113	12.6	31	102	259	281	140	24	20	15	21
South Dakota	131	11	8.4	9	22	30	40	23	0	4	0	3
Tennessee	989	163	16.5	33	110	263	309	148	30	44	27	25
Texas	3,071	340	11.1	171	386	888	935	426	84	66	58	46
Utah	244	32	13.1	22	36	50	70	42	3	9	8	4
Vermont	74	19	25.7	3	7	8	25	18	2	5	2	4
Virginia	757	125	16.5	25	94	220	218	105	28	26	22	19
Washington	492	57	11.6	25	61	147	138	81	10	9	9	11
West Virginia	356	51	14.3	7	42	100	105	63	9	8	10	12
Wisconsin	561	98	17.5	26	69	141	167	88	16	19	19	16
Wyoming	134	16	11.9	6	24	31	45	19	4	2	2	1
<b>U.S. Total</b>	<b>33,808</b>	<b>5,288</b>	<b>15.6</b>	<b>1,538</b>	<b>3,932</b>	<b>8,976</b>	<b>10,223</b>	<b>5,088</b>	<b>1,067</b>	<b>981</b>	<b>1,028</b>	<b>905</b>
Puerto Rico	365	56	15.3	24	30	119	98	41	17	12	7	7

\*Total includes fatalities of unknown age. U.S. had 70 fatalities of unknown age.