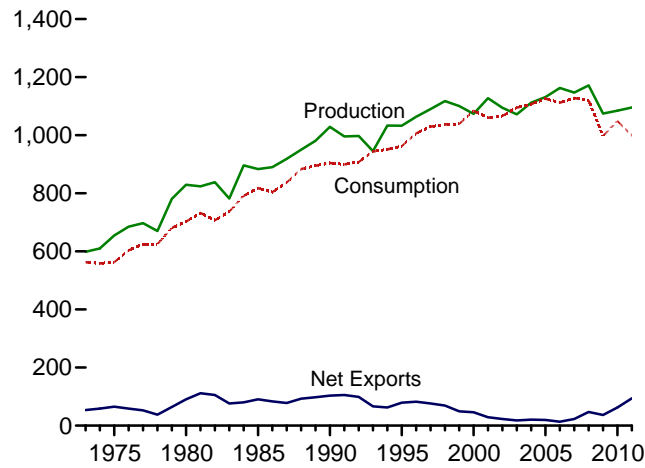


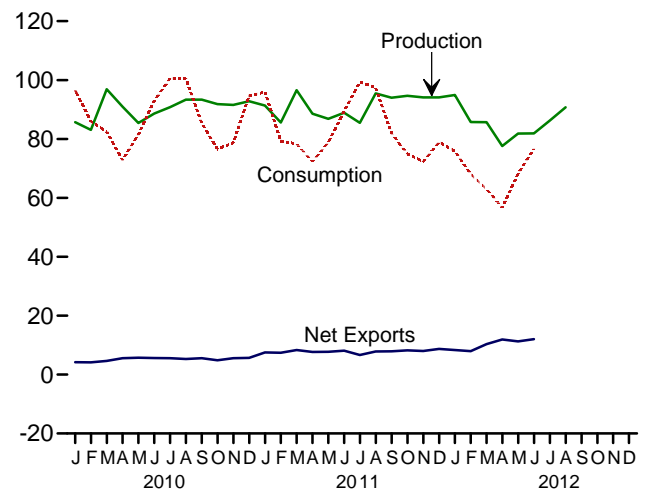
6. Coal

Figure 6.1 Coal
(Million Short Tons)

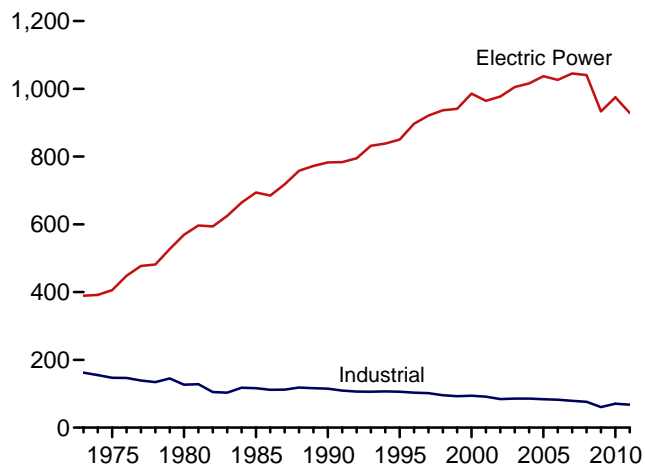
Overview, 1973-2011



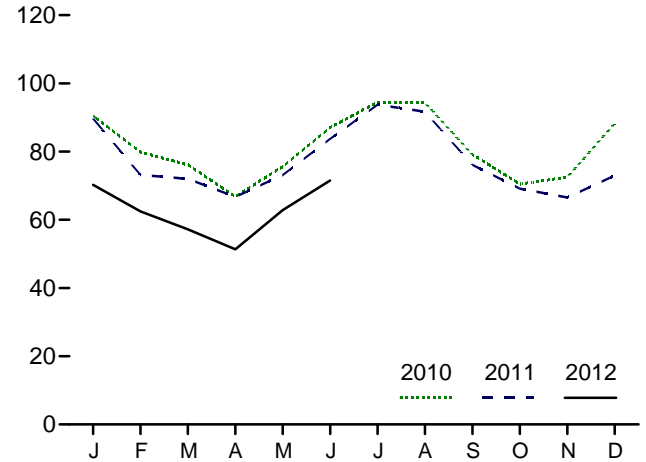
Overview, Monthly



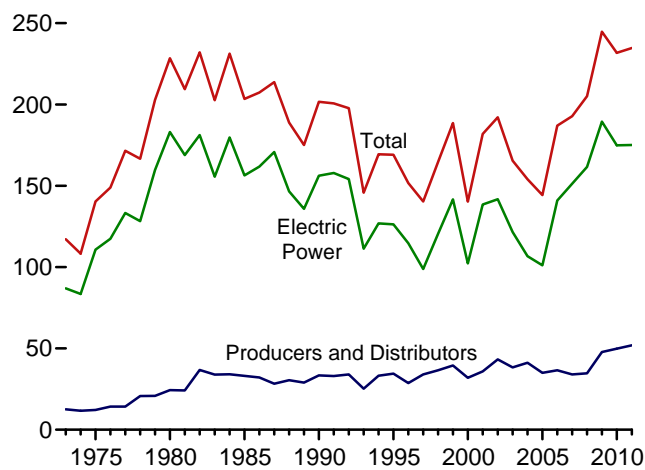
Consumption by Sector, 1973-2011



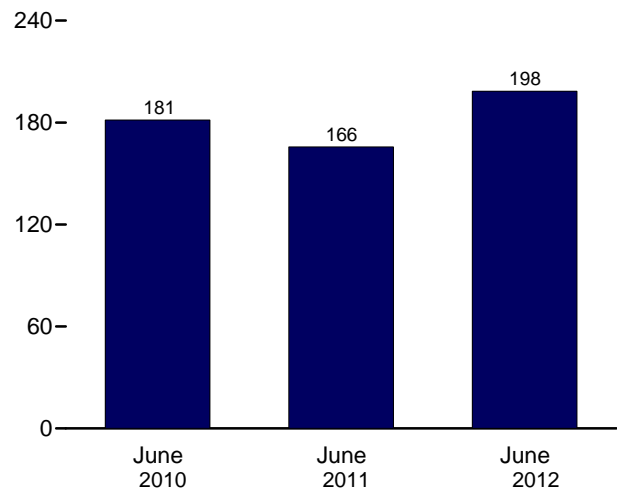
Electric Power Sector Consumption, Monthly



Stocks, End of Year, 1973-2011



Electric Power Sector Stocks, End of Month



Web Page: <http://www.eia.gov/totalenergy/data/monthly/#coal>.
Sources: Tables 6.1-6.3.

Table 6.1 Coal Overview
(Thousand Short Tons)

	Production ^a	Waste Coal Supplied ^b	Trade			Stock Change ^{d,e}	Losses and Unaccounted for ^f	Consumption
			Imports	Exports	Net Imports ^c			
1973 Total	598,568	NA	127	53,587	-53,460	402	-17,878	562,584
1975 Total	654,641	NA	940	66,309	-65,369	32,154	-5,522	562,640
1980 Total	829,700	NA	1,194	91,742	-90,548	25,595	10,827	702,730
1985 Total	883,638	NA	1,952	92,680	-90,727	-27,934	2,796	818,049
1990 Total	1,029,076	3,339	2,699	105,804	-103,104	26,542	-1,730	904,498
1995 Total	1,032,974	8,561	9,473	88,547	-79,074	-275	632	962,104
1996 Total	1,063,856	8,778	8,115	90,473	-82,357	-17,456	1,411	1,006,321
1997 Total	1,089,932	8,096	7,487	83,545	-76,058	-11,253	3,678	1,029,544
1998 Total	1,117,535	8,690	8,724	78,048	-69,324	24,228	-4,430	1,037,103
1999 Total	1,100,431	8,683	9,089	58,476	-49,387	23,988	-2,906	1,038,647
2000 Total	1,073,612	9,089	12,513	58,489	-45,976	-48,309	938	1,084,095
2001 Total	1,127,689	10,085	19,787	48,666	-28,879	41,630	7,120	1,060,146
2002 Total	1,094,283	9,052	16,875	39,601	-22,726	10,215	4,040	1,066,355
2003 Total	1,071,753	10,016	25,044	43,014	-17,970	-26,659	-4,403	1,094,861
2004 Total	1,112,099	11,299	27,280	47,998	-20,718	-11,462	6,887	1,107,255
2005 Total	1,131,498	13,352	30,460	49,942	-19,482	-9,702	9,092	1,125,978
2006 Total	1,162,750	14,409	36,246	49,647	-13,401	42,642	8,824	1,112,292
2007 Total	1,146,635	14,076	36,347	59,163	-22,816	5,812	4,085	1,127,998
2008 Total	1,171,809	14,146	34,208	81,519	-47,311	12,354	5,740	1,120,548
2009 Total	1,074,923	13,666	22,639	59,097	-36,458	39,668	14,985	997,478
2010								
January	85,711	1,187	1,665	5,866	-4,202	-10,695	-3,103	96,494
February	83,087	908	1,239	5,386	-4,146	-7,306	1,154	86,001
March	96,904	1,192	1,899	6,554	-4,655	8,127	2,870	82,444
April	90,960	1,071	1,812	7,358	-5,545	11,519	2,176	72,790
May	85,401	1,138	1,475	7,220	-5,745	2,723	-3,500	81,570
June	88,621	1,219	1,771	7,387	-5,616	-9,407	647	92,983
July	90,795	1,273	1,390	6,928	-5,539	-15,499	1,446	100,582
August	93,350	1,261	1,702	7,001	-5,299	-8,766	-2,316	100,393
September	93,360	1,102	1,588	7,145	-5,556	5,111	-1,591	85,386
October	91,831	982	1,775	6,623	-4,849	11,463	-90	76,591
November	91,558	1,121	1,473	7,015	-5,542	8,878	-437	78,697
December	92,791	1,197	1,563	7,232	-5,669	-9,187	2,925	94,582
Total	1,084,368	13,651	19,353	81,716	-62,363	-13,039	182	1,048,514
2011								
January	R 91,355	1,187	1,014	8,509	-7,496	R -11,414	R 499	R 95,961
February	R 85,575	1,030	843	8,275	-7,432	R -3,196	R 3,109	R 79,259
March	R 96,548	1,068	1,524	9,832	-8,308	R 4,097	R 6,890	R 78,320
April	R 88,563	910	1,136	8,843	-7,706	R 9,055	R 402	R 72,310
May	R 86,850	852	1,313	9,042	-7,730	R 2,348	R -1,243	R 78,868
June	R 88,878	1,109	970	9,102	-8,132	R -9,771	R 2,193	R 89,434
July	R 85,498	1,173	1,208	7,865	-6,657	R -15,675	R -3,622	R 99,311
August	R 95,495	1,142	1,545	9,387	-7,843	R -10,712	R 2,088	R 97,418
September	R 94,013	1,087	835	8,723	-7,888	R 5,044	R 259	R 81,909
October	R 94,643	999	917	9,159	-8,242	R 13,535	R -1,052	R 74,916
November	R 94,109	1,039	807	8,808	-8,001	R 11,801	R 2,997	R 72,349
December	R 94,101	934	976	9,713	-8,737	R 7,812	R -481	R 78,968
Total	R 1,095,628	12,529	13,088	107,259	-94,171	R 2,924	R 12,039	R 999,022
2012								
January	94,944	1,068	789	9,126	-8,337	R 2,713	R 9,089	R 75,873
February	85,763	891	534	8,460	-7,927	R 6,532	R 4,134	R 68,062
March	85,698	837	699	11,055	-10,356	R 10,601	R 2,604	R 62,973
April	R 77,624	R 725	623	12,529	-11,905	R 7,351	R 2,436	R 56,657
May	R 81,825	R 892	986	12,257	-11,271	R -929	R 4,189	R 68,187
June	R 81,911	R 854	719	12,749	-12,030	R -4,540	R -1,385	R 76,660
July	86,244	NA	NA	NA	NA	NA	NA	NA
August	90,768	NA	NA	NA	NA	NA	NA	NA
8-Month Total	684,777	NA	NA	NA	NA	NA	NA	NA
2011 8-Month Total	718,761	8,471	9,553	70,857	-61,303	-35,267	10,316	690,880
2010 8-Month Total	714,828	9,249	12,953	53,701	-40,748	-29,304	-625	713,258

^a Beginning in 2001, includes a small amount of refuse recovery (coal recaptured from a refuse mine and cleaned to reduce the concentration of noncombustible materials).

^b Waste coal (including fine coal, coal obtained from a refuse bank or slurry dam, anthracite culm, bituminous gob, and lignite waste) consumed by the electric power and industrial sectors. Beginning in 1989, waste coal supplied is counted as a supply-side item to balance the same amount of waste coal included in "Consumption."

^c Net imports equal imports minus exports. A minus sign indicates exports are greater than imports.

^d For 1980-2007, excludes coal stocks in the residential and commercial sectors.

^e A negative value indicates a decrease in stocks; a positive value indicates an increase.

^f The difference between calculated coal supply and disposition, due to coal quantities lost or to data reporting problems.

R=Revised. NA=Not available.

Notes: • For methodology used to calculate production, consumption, and stocks, see Note 1, "Coal Production," Note 2, "Coal Consumption," and Note 3, "Coal Stocks," at end of section. • Data include refined coal. • Data values preceded by "F" are derived from the U.S. Energy Information Administration's Short-Term Integrated Forecasting System. See Note 4, "Coal Forecast Values," at end of section. • Totals may not equal sum of components due to independent rounding. • Geographic coverage is the 50 States and the District of Columbia.

Web Page: See <http://www.eia.gov/totalenergy/data/monthly/#coal> for all available data beginning in 1973.

Sources: See end of section.

Table 6.3 Coal Stocks by Sector
(Thousand Short Tons)

	Producers and Distributors	End-Use Sectors					Electric Power Sector ^{b,c}	Total
		Residential and Commercial	Industrial			Total		
			Coke Plants	Other ^a	Total			
1973 Year	12,530	290	6,998	10,370	17,368	17,658	86,967	117,155
1975 Year	12,108	233	8,797	8,529	17,326	17,559	110,724	140,391
1980 Year	24,379	NA	9,067	11,951	21,018	21,018	183,010	228,407
1985 Year	33,133	NA	3,420	10,438	13,857	13,857	156,376	203,367
1990 Year	33,418	NA	3,329	8,716	12,044	12,044	156,166	201,629
1995 Year	34,444	NA	2,632	5,702	8,334	8,334	126,304	169,083
1996 Year	28,648	NA	2,667	5,688	8,355	8,355	114,623	151,627
1997 Year	33,973	NA	1,978	5,597	7,576	7,576	98,826	140,374
1998 Year	36,530	NA	2,026	5,545	7,571	7,571	120,501	164,602
1999 Year	39,475	NA	1,943	5,569	7,511	7,511	^c 141,604	188,590
2000 Year	31,905	NA	1,494	4,587	6,081	6,081	102,296	140,282
2001 Year	35,900	NA	1,510	6,006	7,516	7,516	138,496	181,912
2002 Year	43,257	NA	1,364	5,792	7,156	7,156	141,714	192,127
2003 Year	38,277	NA	905	4,718	5,623	5,623	121,567	165,468
2004 Year	41,151	NA	1,344	4,842	6,186	6,186	106,669	154,006
2005 Year	34,971	NA	2,615	5,582	8,196	8,196	101,137	144,304
2006 Year	36,548	NA	2,928	6,506	9,434	9,434	140,964	186,946
2007 Year	33,977	NA	1,936	5,624	7,560	7,560	151,221	192,758
2008 Year	34,688	498	2,331	6,007	8,338	8,338	161,589	205,112
2009 Year	47,718	529	1,957	5,109	7,066	7,595	189,467	244,780
2010 January	48,854	510	1,832	4,798	6,630	7,140	178,091	234,085
February	49,069	490	1,708	4,486	6,194	6,684	171,026	226,779
March	50,936	471	1,583	4,175	5,758	6,229	177,742	234,906
April	50,761	482	1,715	4,207	5,922	6,404	189,260	246,425
May	50,900	494	1,846	4,239	6,086	6,579	191,669	249,148
June	51,497	505	1,978	4,272	6,250	6,755	181,490	239,741
July	47,935	509	1,948	4,345	6,294	6,803	169,504	224,242
August	48,638	513	1,918	4,419	6,337	6,851	159,987	215,476
September	49,913	517	1,889	4,492	6,381	6,899	163,776	220,587
October	49,430	529	1,901	4,503	6,404	6,933	175,686	232,050
November	50,571	541	1,913	4,514	6,428	6,968	183,389	240,928
December	49,820	552	1,925	4,525	6,451	7,003	174,917	231,740
2011 January	R 48,709	536	1,937	4,305	6,241	6,777	164,840	R 220,327
February	R 49,140	520	1,948	4,084	6,032	6,552	161,439	R 217,131
March	R 48,165	503	1,959	3,864	5,823	6,326	166,737	R 221,228
April	R 49,852	R 505	1,958	R 3,969	R 5,927	6,433	173,999	R 230,283
May	R 51,473	R 508	1,957	R 4,075	R 6,032	6,539	174,619	R 232,631
June	R 50,507	R 510	1,956	R 4,181	R 6,136	6,646	165,707	R 222,860
July	R 52,420	R 513	2,082	R 4,203	R 6,285	6,798	147,967	R 207,185
August	R 50,287	R 515	2,221	R 4,225	R 6,446	6,961	139,225	R 196,473
September	R 49,909	R 518	2,405	R 4,247	R 6,652	7,170	144,438	R 201,517
October	R 50,810	R 546	2,473	R 4,316	R 6,790	7,336	156,906	R 215,052
November	R 50,997	R 575	2,541	R 4,386	R 6,927	7,502	168,354	R 226,853
December	R 51,897	R 603	2,610	R 4,455	R 7,065	7,668	175,100	R 234,664
2012 January	RF 48,424	R 587	2,507	R 4,238	R 6,745	R 7,332	181,621	R 237,377
February	RF 49,954	R 572	2,403	R 4,021	R 6,424	R 6,996	186,958	R 243,908
March	RF 51,458	R 557	2,300	R 3,804	R 6,104	R 6,661	196,391	R 254,510
April	RF 51,705	R 566	R 2,299	R 3,896	R 6,195	R 6,761	203,394	R 261,860
May	RF 51,253	R 575	R 2,297	R 3,989	R 6,286	R 6,862	202,816	R 260,931
June	F 51,007	585	2,295	4,082	6,377	6,962	198,422	256,391

^a Through 1977, data are for stocks held by the manufacturing and transportation sectors. Beginning in 1978, data are for stocks held at manufacturing plants only.

^b The electric power sector comprises electricity-only and combined-heat-and-power (CHP) plants within the NAICS 22 category whose primary business is to sell electricity, or electricity and heat, to the public.

^c Through 1998, data are for stocks at electric utilities only. Beginning in 1999, data also include stocks at independent power producers.

R=Revised. NA=Not available. F=Forecast.

Notes: • Stocks are at end of period. • Electric power sector monthly values

are from Table 7.5; producers and distributors monthly values are estimates derived from collected annual data; all other monthly values are estimates derived from collected quarterly values. • Data include refined coal. • Data values preceded by "R" are derived from the U.S. Energy Information Administration's Short-Term Integrated Forecasting System. See Note 4, "Coal Forecast Values," at end of section. • Totals may not equal sum of components due to independent rounding. • Geographic coverage is the 50 States and the District of Columbia.

Web Page: See <http://www.eia.gov/totalenergy/data/monthly/#coal> for all available data beginning in 1973.

Sources: See end of section.

Coal

Note 1. Coal Production. Preliminary monthly estimates of national coal production are the sum of weekly estimates developed by the U.S. Energy Information Administration (EIA) and published in the *Weekly Coal Production* report. When a week extends into a new month, production is allocated on a daily basis and added to the appropriate month. Weekly estimates are based on Association of American Railroads (AAR) data showing the number of railcars loaded with coal during the week by Class I and certain other railroads.

Prior to 2002, the weekly coal production model converted AAR data into short tons of coal by using the average number of short tons of coal per railcar loaded reported in the “Quarterly Freight Commodity Statistics” from the Surface Transportation Board. If an average coal tonnage per railcar loaded was not available for a specific railroad, the national average was used. To derive the estimate of total weekly production, the total rail tonnage for the week was divided by the ratio of quarterly production shipped by rail and total quarterly production. Data for the corresponding quarter of previous years were used to derive this ratio. This method ensured that the seasonal variations were preserved in the production estimates.

Beginning in 2002, the weekly coal production model uses statistical autoregressive methods to estimate national coal production as a function of railcar loadings of coal, and heating degree-days and cooling degree-days. On Thursday of each week, EIA receives from the AAR data for the previous week. The latest weekly national data for heating degree-days and cooling degree-days are obtained from the National Oceanic and Atmospheric Administration’s Climate Prediction Center. The weekly coal model is run and a national level coal production estimate is obtained. The weekly coal model is refit every quarter after preliminary coal data are available.

When preliminary quarterly data become available, the monthly and weekly estimates are adjusted to conform to the quarterly figures. The adjustment procedure uses State-level production data and is explained in EIA’s *Quarterly Coal Report*. Initial estimates of annual production published in January of the following year are based on preliminary production data covering the first nine months (three quarters) and weekly/monthly estimates for the fourth quarter. The fourth quarter estimates may or may not be revised when preliminary data become available in March of the following year, depending on the magnitude of the difference between the estimates and the preliminary data. In any event, all quarterly, monthly, and weekly production figures are adjusted to conform to the final annual production data published in the *Monthly Energy Review* in the fall of the following year.

Note 2. Coal Consumption. Coal consumption data are reported by major end-use sector. Forecast data (designated

by an “F”) are derived from forecasted values shown in the EIA *Short-Term Energy Outlook* (DOE/EIA-0202) table titled “U.S. Coal Supply and Demand: Base Case.” The monthly estimates are based on the quarterly values, which are released in March, June, September, and December. The estimates are revised quarterly as collected data become available from the data sources. Sector-specific information follows.

Residential and Commercial—Coal consumption by the residential and commercial sectors is reported to EIA for the two sectors combined; EIA estimates the amount consumed by the sectors individually. To create the estimates, it is first assumed that an occupied coal-heated housing unit consumes fuel at the same Btu rate as an oil-heated housing unit. Then, for the years in which data are available on the number of occupied housing units by heating source (1973–1981 and subsequent odd-numbered years), residential consumption of coal is estimated by the following steps: a ratio is created of the number of occupied housing units heated by coal to the number of occupied housing units heated by oil; that ratio is then multiplied by the Btu quantity of oil consumed by the residential sector to derive an estimate of the Btu quantity of coal consumed by the residential sector; and, finally, the amount estimated as the residential sector consumption is subtracted from the residential and commercial sectors’ combined consumption to derive the commercial sector’s estimated consumption. The 2007 share is applied to 2008 forward, and the other missing years’ shares are interpolated.

Industrial Coke Plants—Prior to 1980, monthly coke plant consumption data were taken directly from reported data. For 1980–1987, coke plant consumption estimates were derived by proportioning reported quarterly data by using the ratios of monthly-to-quarterly consumption data in 1979, the last year in which monthly data were reported. Beginning in January 1988, monthly coke plant consumption estimates are derived from the reported quarterly data by using monthly ratios of raw steel production data from the American Iron and Steel Institute. The ratios are the monthly raw steel production from open hearth and basic oxygen process furnaces as a proportion of the quarterly production from those kinds of furnaces.

Industrial Other—Prior to 1978, monthly consumption data for the other industrial sector (all industrial users minus coke plants) were derived by using reported data to modify baseline consumption figures from the most recent Bureau of the Census Annual Survey of Manufactures or Census of Manufactures. For 1978 and 1979, monthly estimates were derived from data reported on Forms EIA-3 and EIA-6. For 1980–1987, monthly figures were estimated by proportioning quarterly data by using the ratios of monthly-to-quarterly consumption data in 1979, the last year in which monthly data were reported on Form EIA-3. Beginning in January 1988, monthly consumption for the other industrial sector is estimated from reported quarterly data by using ratios derived from industrial production indices published by the Board of Governors of the

Federal Reserve System. Indices for six major industry groups are used as the basis for calculating the ratios: food manufacturing, which is North American Industry Classification System (NAICS) code 311; paper manufacturing, NAICS 322; chemical manufacturing, NAICS 325; petroleum and coal products, NAICS 324; non-metallic mineral products manufacturing, NAICS 327; and primary metal manufacturing, NAICS 331. The monthly ratios are computed as the monthly sum of the weighted indices as a proportion of the quarterly sum of the weighted indices by using the 1977 proportion as the weights. Prior to 2008, quarterly consumption data for the other industrial sector were derived by adding beginning stocks at manufacturing plants to current receipts and subtracting ending stocks at manufacturing plants. In this calculation, current receipts are the greater of either reported receipts from manufacturing plants (Form EIA-3) or reported shipments to the other industrial sector (Form EIA-6), thereby ensuring that agriculture, forestry, fishing, and construction consumption data were included where appropriate. Beginning in 2008, quarterly consumption totals for other industrial coal include data for manufacturing and mining only. Over time, surveyed coal consumption data for agriculture, forestry, fishing, and construction dwindled to about 20,000 to 30,000 tons annually. Therefore, in 2008, EIA consolidated its programs by eliminating agriculture, forestry, fishing, and construction as surveyed sectors.

Electric Power Sector—Monthly consumption data for electric power plants are taken directly from reported data.

Note 3. Coal Stocks. Coal stocks data are reported by major end-use sector. Forecast data for the most recent months (designated by an “F”) are derived from forecasted values shown in the EIA *Short-Term Energy Outlook* (DOE/EIA-0202) table titled “U.S. Coal Supply and Demand: Base Case.” The monthly estimates are based on the quarterly values (released in March, June, September, and December) or annual values. The estimates are revised as collected data become available from the data sources. Sector-specific information follows.

Producers and Distributors—Prior to 1998, quarterly stocks at producers and distributors were taken directly from reported data. Monthly data were estimated by using one-third of the current quarterly change to indicate the monthly change in stocks. Beginning in 1998, end-of-year stocks are taken from reported data. Monthly stocks are estimated by a model.

Residential and Commercial—Prior to 1980, stock estimates for the residential and commercial sector were taken directly from reported data. For 1980–2007, stock estimates were not collected. Beginning in 2008, quarterly stocks data are collected on Form EIA-3 (data for “Commercial and Institutional Coal Users”).

Industrial Coke Plants—Prior to 1980, monthly stocks at coke plants were taken directly from reported data.

Beginning in 1980, coke plant stocks are estimated by using one-third of the current quarterly change to indicate the monthly change in stocks. Quarterly stocks are taken directly from data reported on Form EIA-5.

Industrial Other—Prior to 1978, stocks for the other industrial sector were derived by using reported data to modify baseline figures from a one-time Bureau of Mines survey of consumers. For 1978–1982, monthly estimates were derived by judgmentally proportioning reported quarterly data based on representative seasonal patterns of supply and demand. Beginning in 1983, other industrial coal stocks are estimated as indicated above for coke plants. Quarterly stocks are taken directly from data reported on Form EIA-3 and therefore include only manufacturing industries; data for agriculture, forestry, fishing, mining, and construction stocks are not available.

Electric Power Sector—Monthly stocks data at electric power plants are taken directly from reported data.

Note 4. Coal Forecast Values. Data values preceded by “F” in this section are forecast values. They are derived from EIA Short-Term Integrated Forecasting System (STIFS). The model is driven primarily by data and assumptions about key macroeconomic variables, the world oil price, and weather. The coal forecast relies on other variables as well, such as alternative fuel prices (natural gas and oil) and power generation by sources other than fossil fuels, including nuclear and hydroelectric power. Each month, EIA staff review the model output and make adjustments, if appropriate, based on their knowledge of developments in the coal industry.

The STIFS model results are published monthly in EIA’s *Short-Term Energy Outlook*, which is accessible on the Web at <http://www.eia.gov/forecasts/steo/>.

Note 5. Additional Coal Information. EIA’s *Quarterly Coal Report* provides additional information about coal data and estimation procedures.

Table 6.1 Sources

Production

1973–September 1977: U.S. Department of the Interior, Bureau of Mines, *Minerals Yearbook* and *Minerals Industry Surveys*.

October 1977 forward: U.S. Energy Information Administration (EIA), *Weekly Coal Production*.

Waste Coal Supplied

1989–1997: EIA, Form EIA-867, “Annual Nonutility Power Producer Report.”

1998–2000: EIA, Form EIA-860B, “Annual Electric Generator Report—Nonutility.”

2001–2003: EIA, Form EIA-906, “Power Plant Report,” and Form EIA-3, “Quarterly Coal Consumption and

Quality Report—Manufacturing Plants.”

2004–2007: EIA, Form EIA-906, “Power Plant Report,” Form EIA-920, “Combined Heat and Power Plant Report,” and Form EIA-3, “Quarterly Coal Consumption and Quality Report—Manufacturing Plants.”

2008 forward: EIA, Form EIA-923, “Power Plant Operations Report,” and Form EIA-3, “Quarterly Coal Consumption and Quality Report, Manufacturing and Transformation/Processing Coal Plants and Commercial and Institutional Coal Users”; and, for forecast values, EIA, Short-Term Integrated Forecasting System.

Imports and Exports

U.S. Department of Commerce, Bureau of the Census, Monthly Reports IM 145 (Imports) and EM 545 (Exports).

Stock Change

Calculated from data in Table 6.3. (The 1973 stock change value is calculated using the 1972 total stocks value of 116,753 thousand short tons from EIA, *Annual Energy Review*, Table 7.6. The 1972 stocks value excludes stocks at producers and distributors.)

Losses and Unaccounted for

Calculated as the sum of production, imports, and waste coal supplied, minus exports, stock change, and consumption.

Consumption

Table 6.2.

Table 6.2 Sources

Residential and Commercial Total

Coal consumption by the residential and commercial sectors combined is reported to the U.S. Energy Information Administration (EIA). EIA estimates the sectors individually using the method described in Note 2, “Consumption,” at the end of Section 6. Data for the residential and commercial sectors combined are from:

1973–1976: U.S. Department of the Interior (DOI), Bureau of Mines (BOM), *Minerals Yearbook*.

January–September 1977: DOI, BOM, Form 6-1400, “Monthly Coal Report, Retail Dealers—Upper Lake Docks.”

October 1977–1979: EIA, Form EIA-2, “Monthly Coal Report, Retail Dealers—Upper Lake Docks.”

1980–1997: EIA, Form EIA-6, “Coal Distribution Report,” quarterly.

1998–2007: DOI, Mine Safety and Health Administration, Form 7000-2, “Quarterly Mine Employment and Coal Production.”

2008 forward: EIA, Form EIA-3, “Quarterly Coal Consumption and Quality Report, Manufacturing and Transformation/Processing Coal Plants and Commercial and Institutional Coal Users” (data for “Commercial and Institutional Coal Users”); and, for forecast values, EIA, Short-Term Integrated Forecasting System (STIFS).

Commercial CHP

Table 7.4c.

Commercial Other

Calculated as “Commercial Total” minus “Commercial CHP.”

Industrial Coke Plants

1973–September 1977: DOI, BOM, *Minerals Yearbook* and *Minerals Industry Surveys*.

October 1977–1980: EIA, Form EIA-5/5A, “Coke and Coal Chemicals—Monthly/Annual Supplement.”

1981–1984: EIA, Form EIA-5/5A, “Coke Plant Report—Quarterly/Annual Supplement.”

1985 forward: EIA, Form EIA-5, “Coke Plant Report—Quarterly”; and, for forecast values, EIA, STIFS.

Other Industrial Total

1973–September 1977: DOI, BOM, *Minerals Yearbook* and *Minerals Industry Surveys*.

October 1977–1979: EIA, Form EIA-3, “Monthly Coal Consumption Report—Manufacturing Plants.”

1980–1997: EIA, Form EIA-3, “Quarterly Coal Consumption Report—Manufacturing Plants,” and Form EIA-6, “Coal Distribution Report,” quarterly.

1998–2007: EIA, Form EIA-3, “Quarterly Coal Consumption Report—Manufacturing Plants,” Form EIA-6A, “Coal Distribution Report,” annual, and Form EIA-7A, “Coal Production Report,” annual.

2008 forward: EIA, Form EIA-3, “Quarterly Coal Consumption and Quality Report, Manufacturing and Transformation/Processing Coal Plants and Commercial and Institutional Coal Users,” and Form EIA-7A, “Coal Production Report,” annual; and, for forecast values, EIA, STIFS.

Other Industrial CHP

Table 7.4c.

Other Industrial Non-CHP

Calculated as “Other Industrial Total” minus “Other Industrial CHP.”

Transportation

1973–1976: DOI, BOM, *Minerals Yearbook*.

January–September 1977: DOI, BOM, Form 6-1400, “Monthly Coal Report, Retail Dealers—Upper Lake Docks.”

October–December 1977: EIA, Form EIA-6, “Coal Distribution Report,” quarterly.

Electric Power

Table 7.4b.

Table 6.3 Sources

Producers and Distributors

1973–1979: U.S. Department of the Interior (DOI), Bureau of Mines (BOM), Form 6-1419Q, “Distribution of Bituminous Coal and Lignite Shipments.”

1980–1997: U.S. Energy Information Administration

(EIA), Form EIA-6, "Coal Distribution Report," quarterly.
1998–2007: EIA, Form EIA-6A, "Coal Distribution Report," annual.
2008 forward: EIA, Form EIA-7A, "Coal Production Report," annual, and Form EIA-8A, "Coal Stocks Report," annual; and, for forecast values, EIA internal estimates.

Residential and Commercial

1973–1976: DOI, BOM, *Minerals Yearbook*.
January–September 1977: DOI, BOM, Form 6-1400, "Monthly Coal Report, Retail Dealers—Upper Lake Docks."
October 1977–1979: EIA, Form EIA-2, "Monthly Coal Report, Retail Dealers—Upper Lake Docks."
2008 forward: EIA, Form EIA-3, "Quarterly Coal Consumption and Quality Report, Manufacturing and Transformation/Processing Coal Plants and Commercial and Institutional Coal Users" (data for "Commercial and Institutional Coal Users"); and, for forecast values, EIA, STIFS.

Industrial Coke Plants

1973–September 1977: DOI, BOM, *Minerals Yearbook* and *Minerals Industry Surveys*.

October 1977–1980: EIA, Form EIA-5/5A, "Coke and Coal Chemicals—Monthly/Annual."

1981–1984: EIA, Form EIA 5/5A, "Coke Plant Report—Quarterly/Annual Supplement."

1985 forward: EIA, Form EIA-5, "Coke Plant Report—Quarterly"; and, for forecast values, EIA, STIFS.

Industrial Other

1973–September 1977: DOI, BOM, *Minerals Yearbook* and *Minerals Industry Surveys*.

October 1977–1979: EIA, Form EIA-3, "Monthly Coal Consumption Report—Manufacturing Plants."

1980–2007: EIA, Form EIA-3, "Quarterly Coal Consumption Report—Manufacturing Plants."

2008 forward: EIA, Form EIA-3, "Quarterly Coal Consumption and Quality Report, Manufacturing and Transformation/Processing Coal Plants and Commercial and Institutional Coal Users"; and, for forecast values, EIA, STIFS.

Electric Power

Table 7.5.

THIS PAGE INTENTIONALLY LEFT BLANK