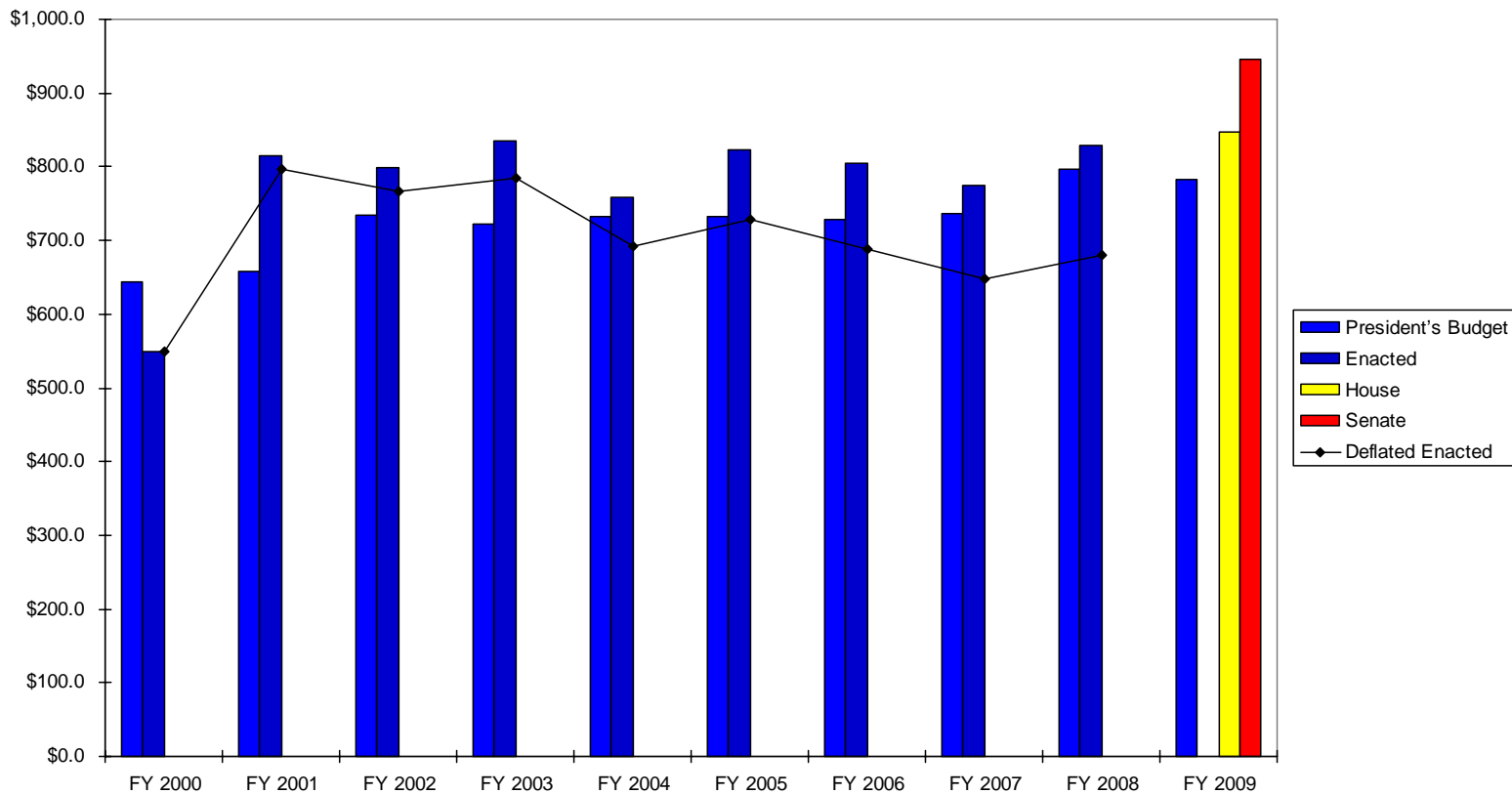




# Historical NMFS Budget Trends (\$ Millions, Excludes Emergency Supplementals)

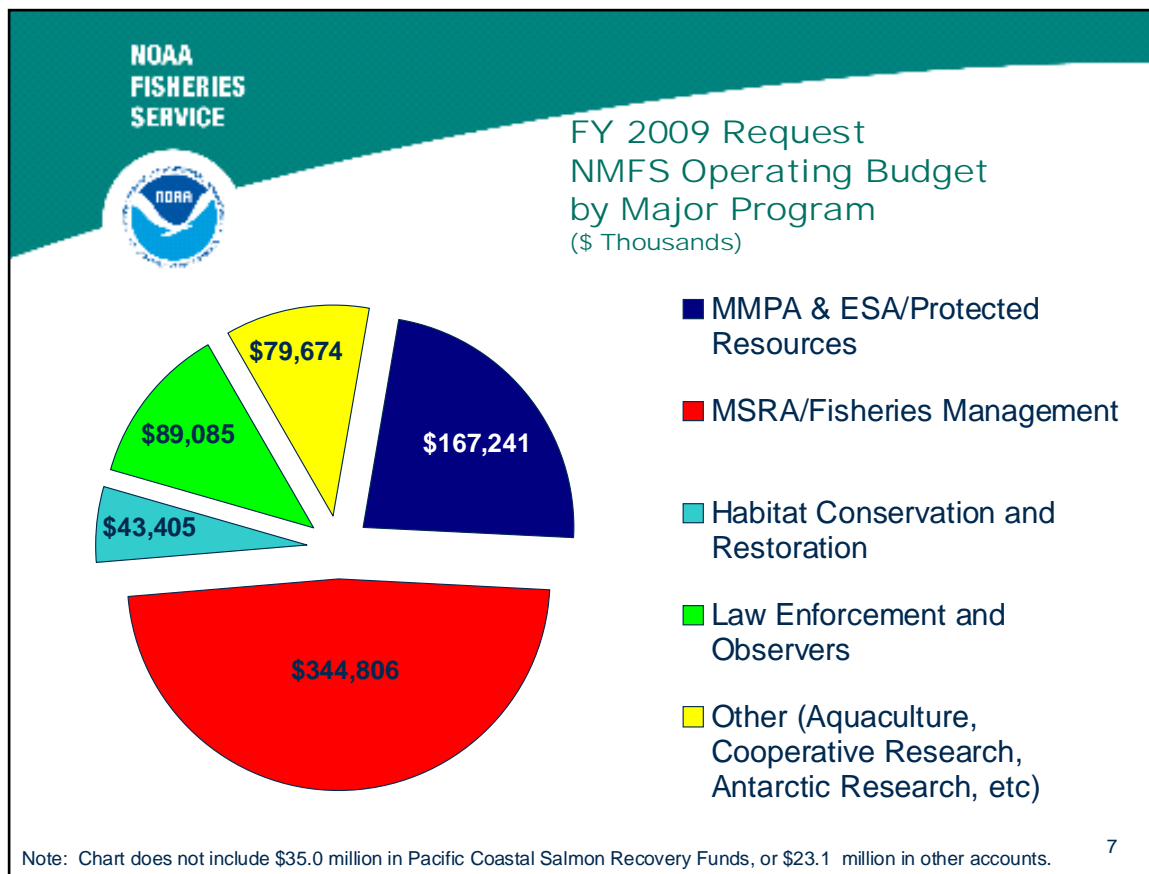




# FY 2009 NMFS Budget Overview



- FY 2009 Budget provides **\$782.3M** for NMFS
  - a \$46.1M (5.6%) decrease from the FY 2008 Enacted Budget
  - a \$13.6M (1.7%) decrease from the FY 2008 President's Budget
- \$10.1M for Net Adjustments to Base
- \$34.3 M for Net Program Changes
- Supports highest priorities of the Magnuson-Stevens Fishery Conservation and Management Reauthorization Act of 2006 (MSRA).





# FY 2009 NMFS Budget Change



<b>Program Change</b>	<b>Amount</b>
Total ATBs	\$10.1
MSRA	[\$31.8]
Expand Annual Stock Assessments	\$8.5
Limited Access Privilege Programs (LAPPs)	\$4.8
Recreational Fisheries Information	\$3.0
Annual Catch Limits (ACLs) and Stipends	\$5.1
Economics and Social Sciences	\$4.7
IUU Enforcement	\$1.1
Cooperative Research	\$1.2
Deep Sea Corals	\$1.5
Western Central Pacific Fisheries Management Commission (WCPFMC)	\$1.0
Pacific Whiting Treaty	\$0.25
Reduce Bycatch	\$0.6
Marine Mammals Conservation & Recovery Activities	\$1.5
Atlantic Salmon	\$4.2
Open Rivers Initiative	\$5.4
Antarctic Research	\$0.5
Other Restorations FY 2008 Presidents Request	\$41.0
NMFS Decreases (Pacific Salmon, Penobscot River Restoration, Columbia River BiOP)	(\$50.0)
<b>TOTAL PROGRAM CHANGE (excludes ATBs)</b>	<b>\$34.3</b>



<b>NOAA Fisheries Service (\$ in millions)</b>	<b>FY 2008 Enacted</b>	<b>FY 2009 Request</b>	<b>FY2009 House</b>	<b>FY 2009 Senate</b>
<b>Operations, Research and Facilities</b>				
Protected Resources Research and Management	163.8	167.2	177.8	178.1
Fisheries Research and Management	327	344.8	352.5	370.3
Enforcement and Observers/Training	84.8	89.1	89.1	90.1
Habitat Conservation and Restoration	50.2	43.4	54.9	48.4
Other Activities Supporting Fisheries	81.9	79.7	83.9	90.4
<b>Subtotal NOAA Fisheries Service ORF</b>	<b>707.7</b>	<b>724.2</b>	<b>758.2</b>	<b>777.3</b>
<b>Procurement, Acquisition, and Construction</b>	<b>2</b>	<b>0</b>	<b>0</b>	<b>4.6</b>
<b>PCSRF</b>	<b>66.9</b>	<b>35.0</b>	<b>65.0</b>	<b>90.0</b>
<b>Other Discretionary Accounts</b>	<b>-76.8</b>	<b>-78.6</b>	<b>-78.6</b>	<b>-28.582</b>
<b>Other Mandatory Accounts</b>	<b>128.5</b>	<b>101.7</b>	<b>101.7</b>	<b>101.7</b>
<b>Total</b>	<b>828.4</b>	<b>782.3</b>	<b>846.3</b>	<b>945.0</b>