

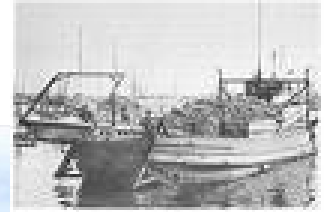
# Marine Spatial Planning for the US: Balancing Competing Ocean Uses



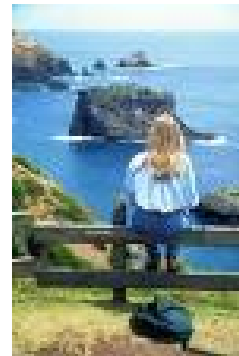
**Dr. Charles M. Wahle**  
**Senior Scientist**  
**National MPA Center**  
**NOAA**

**MAFAC Meeting**  
**Monterey, CA**  
**May 13, 2009**

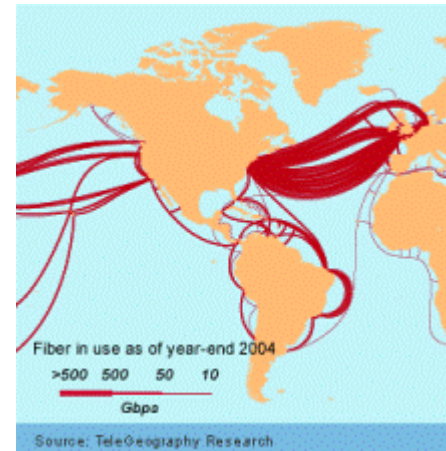
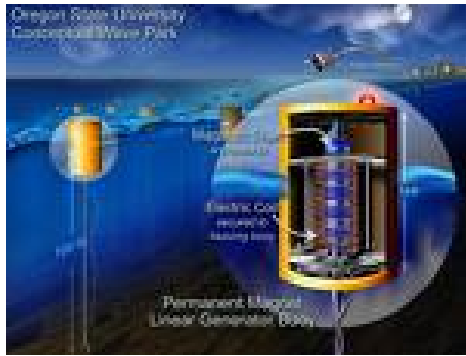
# Oceans Are Becoming Crowded Places: *Fishing Uses*



# Oceans Are Becoming Crowded Places: *Non-Consumptive Uses*



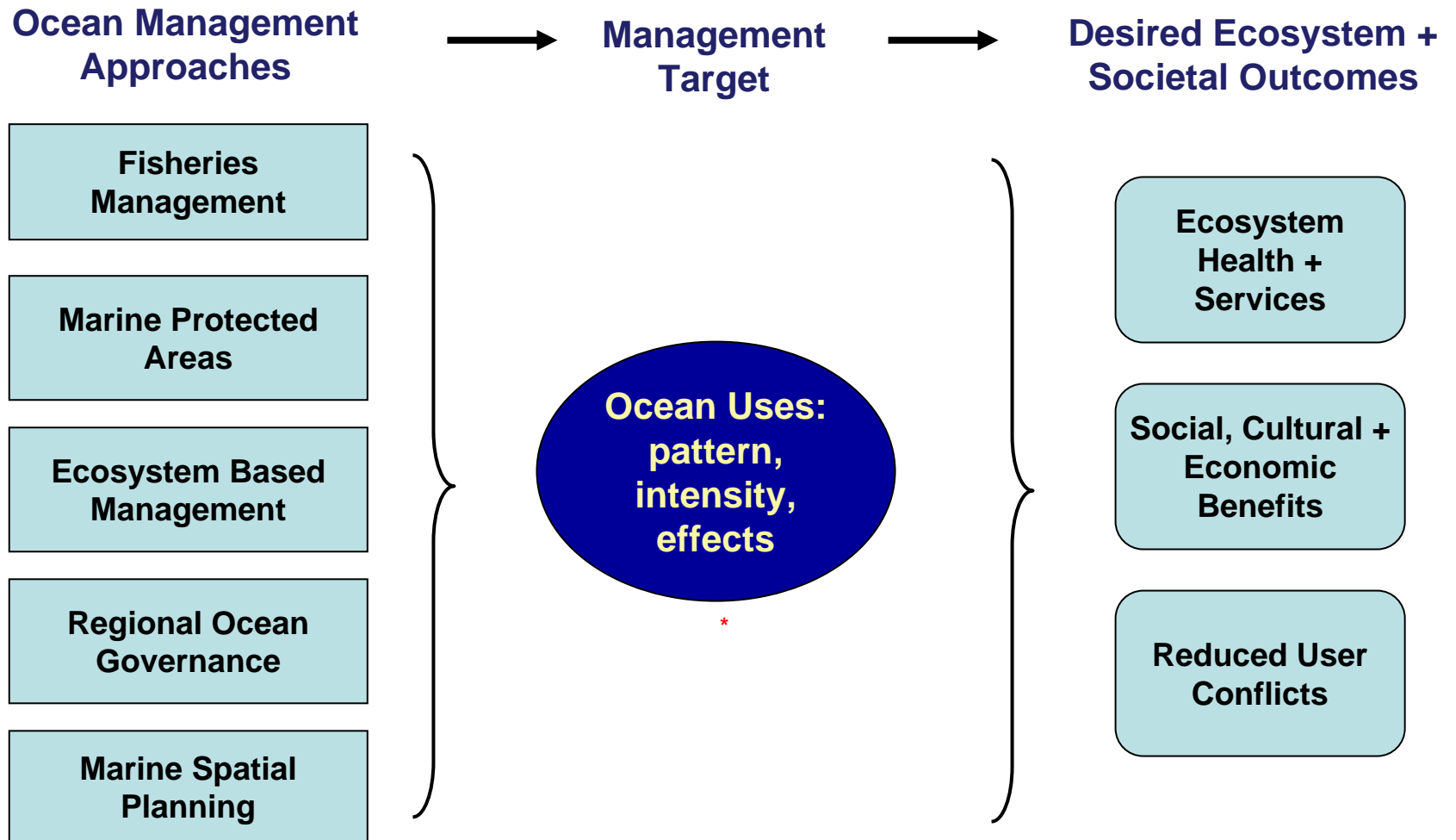
# Oceans Are Becoming Crowded Places: *Industrial and Military Uses*



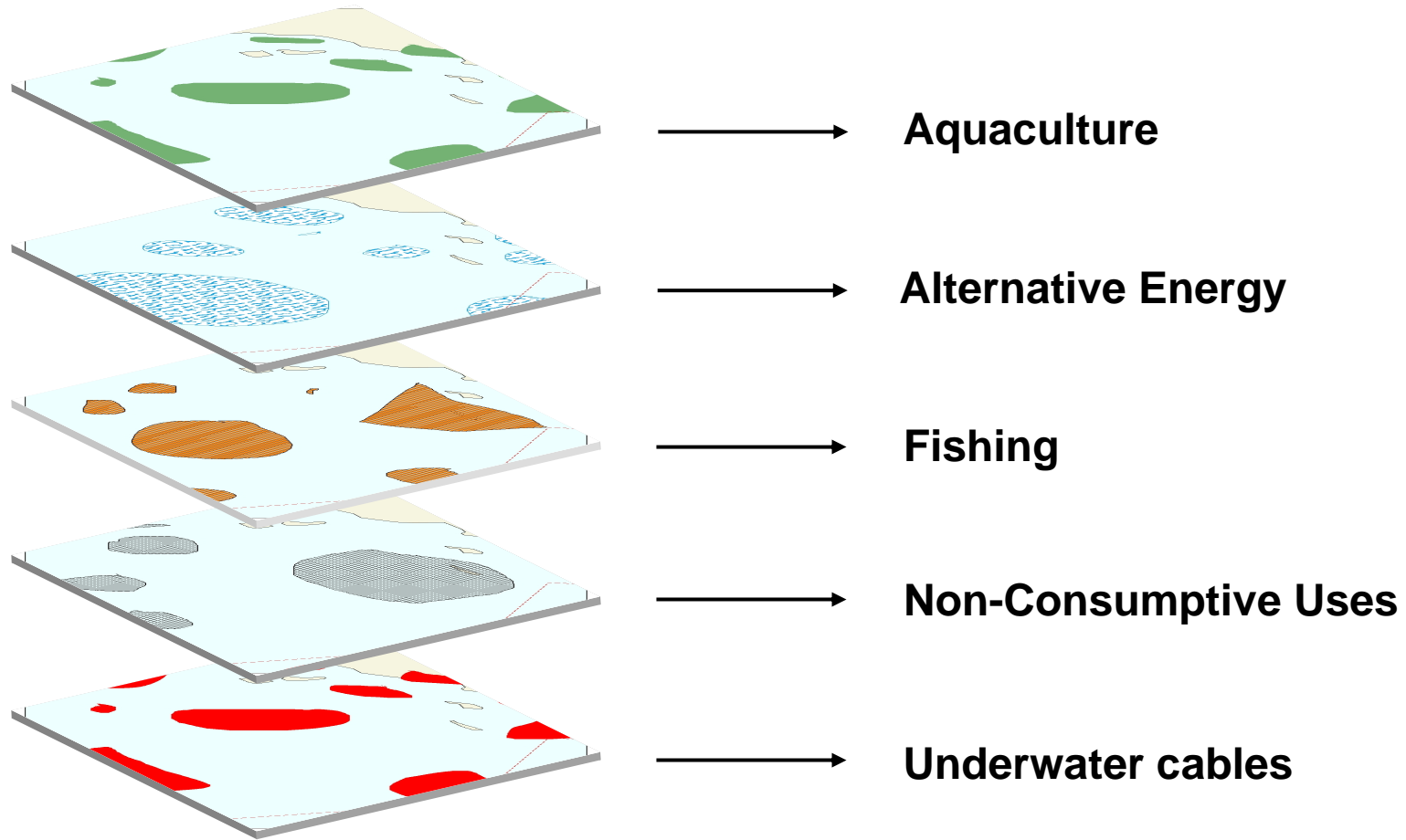
# Oceans Are Becoming Crowded Places: *The Other Guys*



# Effective Ocean Management Increasingly Requires Planning For All Ocean Uses



# The Missing Puzzle Piece: Comprehensive Understanding of Current and Planned Ocean Uses



# Filling the Knowledge Gap: The California Ocean Uses Atlas

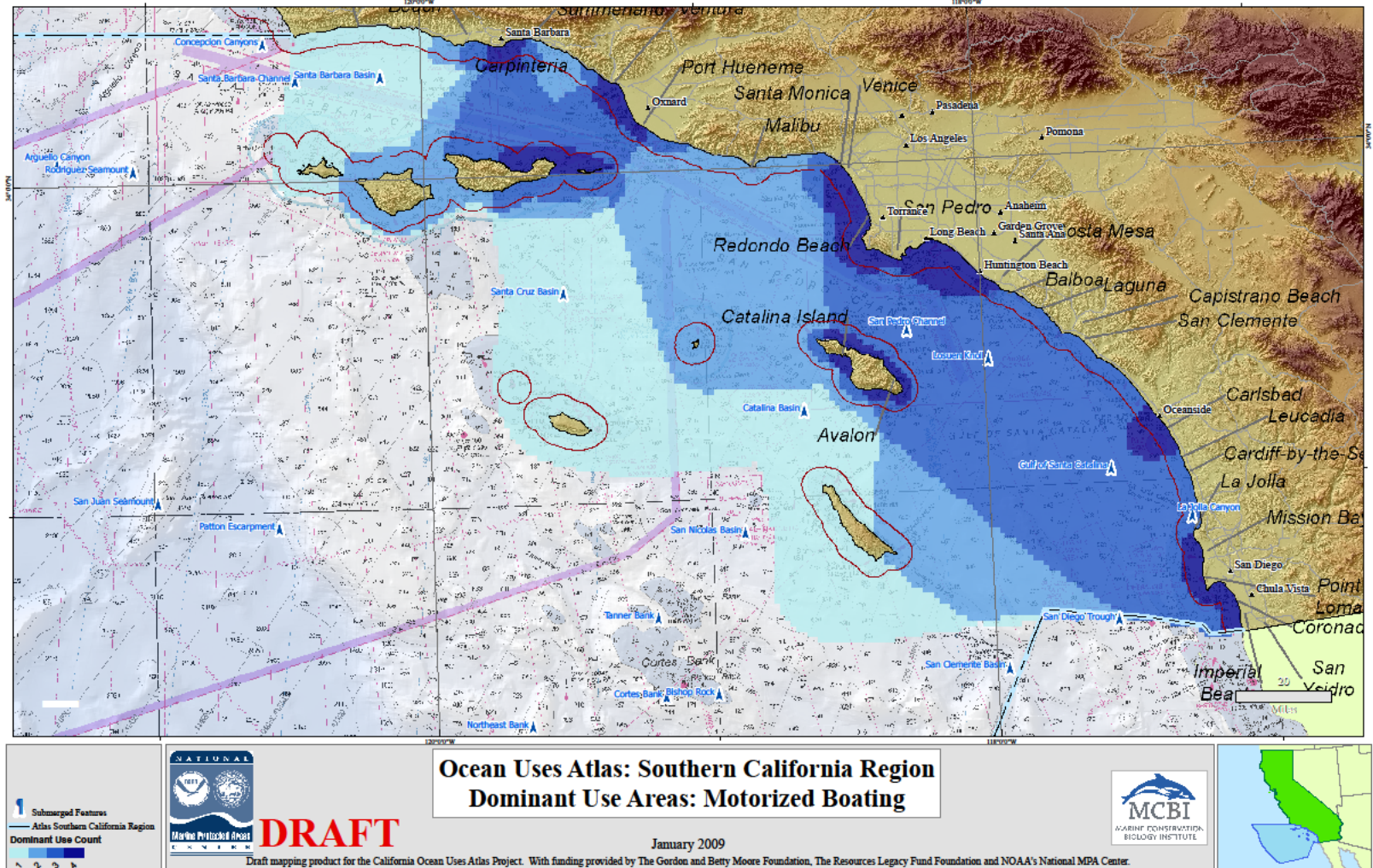
- **Purpose** – to enhance CA ocean management by filling key data gap on the full range of human uses
- **Approach** – regional experts (e.g. managers + users) create GIS maps of 30 uses based on collective knowledge
  - non-consumptive
  - fishing
  - industrial and military
- **Partners** –
  - NOAA Marine Protected Areas Center
  - Marine Conservation Biology Institute
  - *Gordon and Betty Moore Foundation*
  - *Resources Legacy Fund Foundation*
- **Timeline** – Jan 2008 – Sep 2009





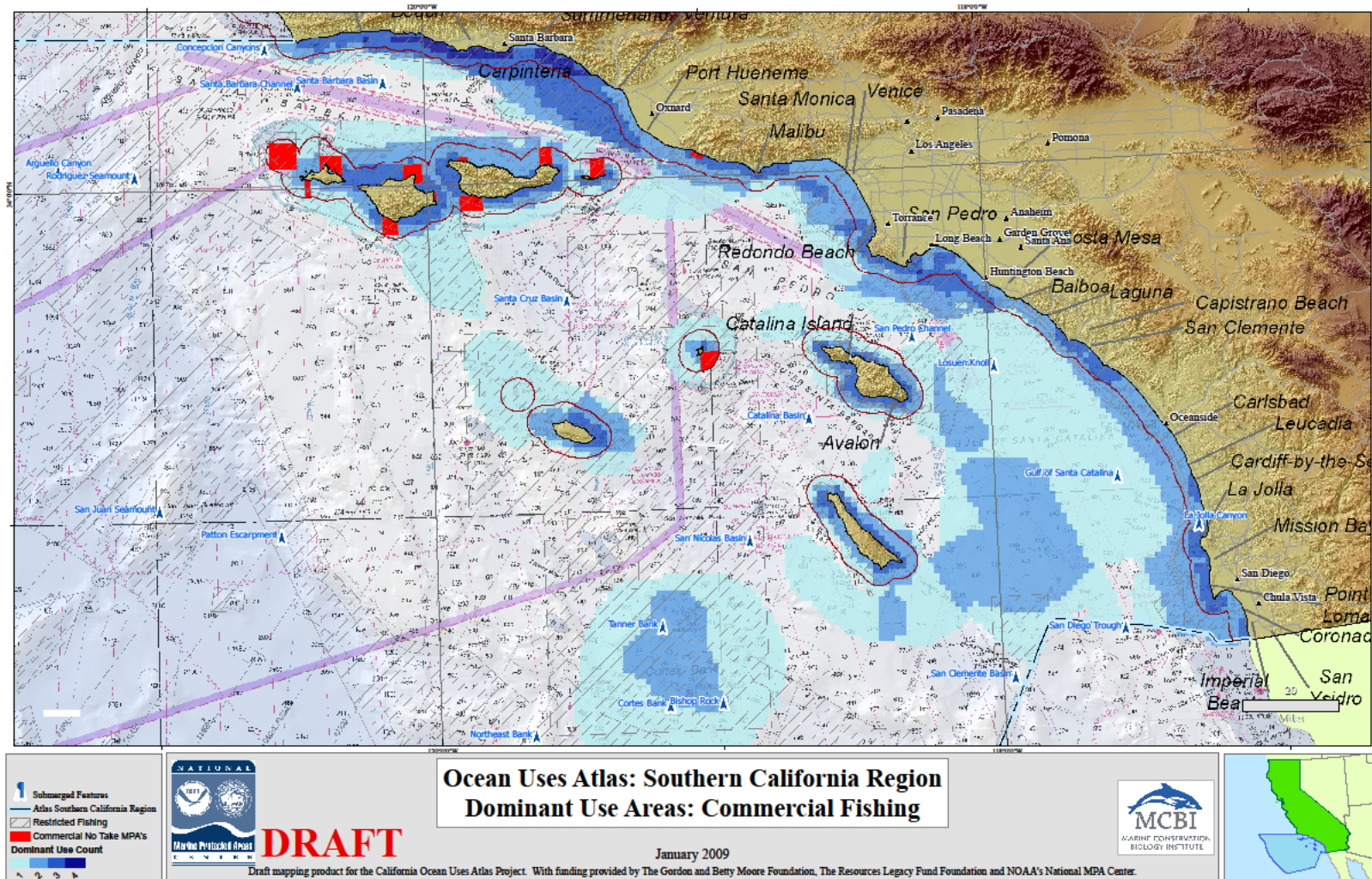
# Dominant Use Area of Motorized Boating

## Sample Map from SoCal Atlas



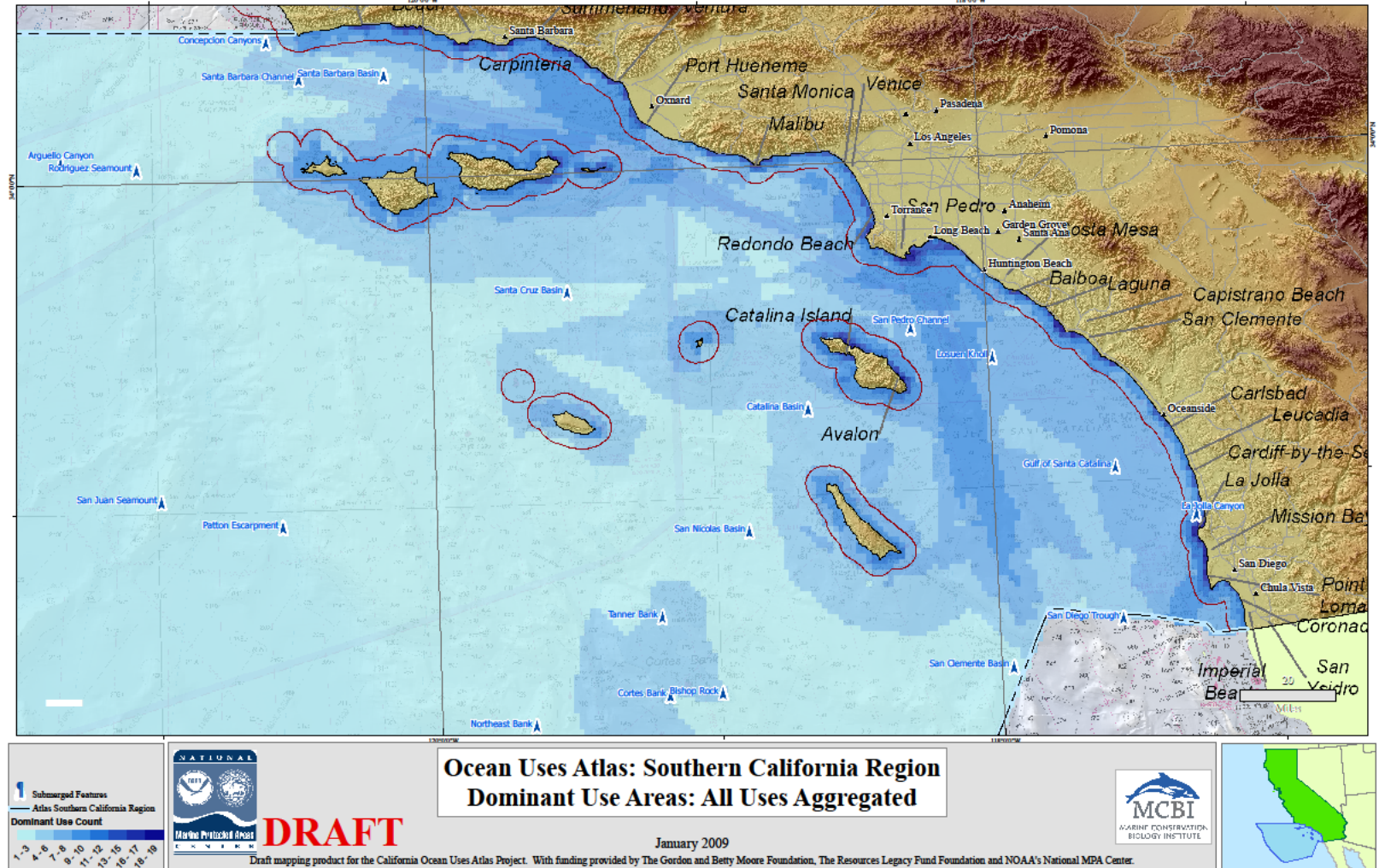
# Related Uses Combined: Commercial Fishing

## Sample Map from SoCal Atlas



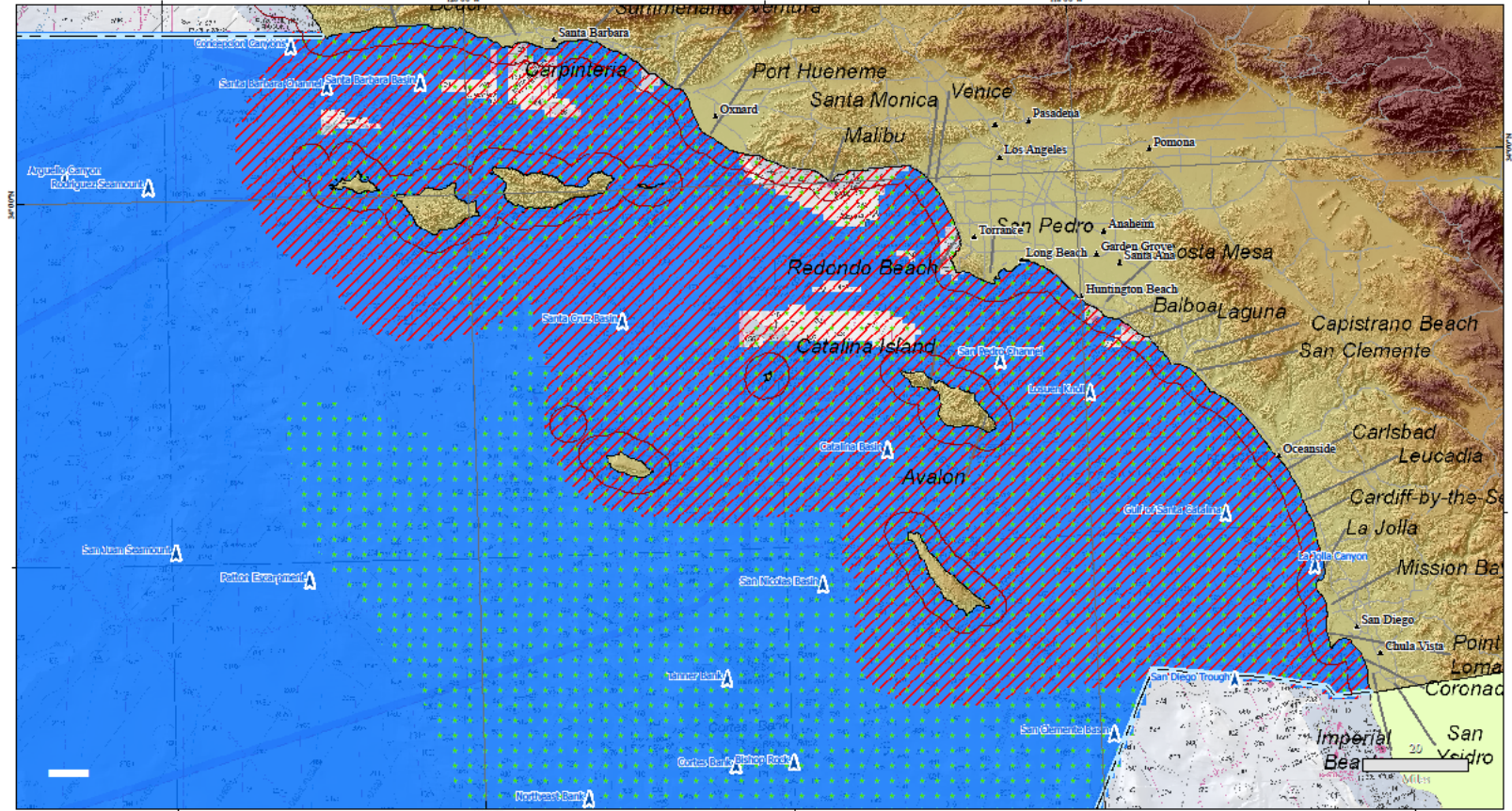
# All Ocean Uses Combined

## Sample Map from SoCal Atlas



# Overlap of All 3 Use Sectors

## Sample Map from SoCal Atlas



**Ocean Uses Atlas: Southern California Region**  
**Dominant Use Areas: All Sectors**

**DRAFT**

January 2009

Draft mapping product for the California Ocean Uses Atlas Project. With funding provided by The Gordon and Betty Moore Foundation, The Resources Legacy Fund Foundation and NOAA's National MPA Center.

**NATIONAL**  
MARINE Protected Areas  
PROGRAM

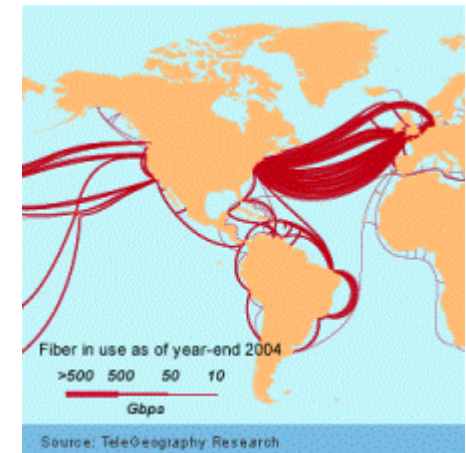
**MCBI**  
MARINE CONSERVATION  
BIOLOGY INSTITUTE

Submerged Features  
Atlas Southern California Region  
Fishing Use Areas  
Non-Consumptive Use Areas  
Industrial Use Areas

# Implications of Emerging Ocean Uses

**Ocean uses are expanding faster than our ability to manage them**

- 1. Increasing pressure on ocean resources and ecosystems**
- 2. Increasing conflicts among users**
- 3. Decreasing access to ocean areas necessary for specific uses**



# A Practical Way Forward: Marine Spatial Planning

---

**Marine Spatial Planning** is a comprehensive, ecosystem-based process through which compatible human uses are objectively and transparently allocated to appropriate ocean areas to sustain critical ecological, economic and cultural services for future generations.

Draft Working Definition, May 2009

# World-Wide Examples of Comprehensive Marine Spatial Planning

---

- **Europe** – Belgium and Germany – driven by renewable energy
- **Australia** – Great Barrier Reef Marine Park Authority – driven by ecosystem declines
- **Massachusetts Ocean Planning** – driven initially by renewable energy proposals
- **US Coastal Regions** – New England, Gulf of Mexico, West Coast – driven by suite of ocean use pressures
- **US National System of MPAs** – driven by need for comprehensive, science-based approach to planning and management

# What Will It Take?

## Core Components of MSP

---

### **Spatial Data and Planning Tools**

- *Spatially Explicit Ecosystem Information*
- *Spatially Explicit Ocean Uses Information*
- *Decision Support Tools*

### **Policy Framework and Leadership**

- *Interagency Coordination and Regional Planning*
- *Policy Framework*



# Getting There From Here: Evolutionary Pathway to Comprehensive Ocean Management

- **Traditional sectoral management**
- **Sectoral management informed by comprehensive spatial data**
- **Collaborative, integrated, regional marine spatial planning under existing authorities**
- **New legal authorities and/or policy direction mandating comprehensive ocean planning and management**



# CONTACT

**Dr. Charlie Wahle  
Senior Scientist**

**NOAA MPA Center  
99 Pacific Street  
Suite 100-F  
Monterey, CA 93940**

**831-242-2052**

**[charles.wahle@noaa.gov](mailto:charles.wahle@noaa.gov)**

