



United States Department of Energy
Oak Ridge Office
Accomplishing the Mission



Oak Ridge Reservation Emergency Public Information Program

Walter Perry
Deputy Director of Public Affairs
Oak Ridge Office
May 7, 2007

Overview

- **Developing the Oak Ridge Reservation
Emergency Public Information (EPI)
Program**
- **Products**
- **Lessons Learned**
- **Questions**
- **Free Copies**



Development of EPI Program

- **We all know EPI...**
 - ➔ **The process of providing the public with accurate, timely, and useful information and instructions throughout the period of an emergency**
- **What about in advance of an Emergency?**
 - ➔ **Our process takes into account education before an emergency**





Why the Need to Act?

- **EPI Program is incomplete; lacks critical content and public education component**
 - Do you know what sector you live or work in?
 - Do you know where your evacuation center is?
 - Do you know exactly what to do if the sirens sound?

- **Status of DOE's EPI Program**
 - EPI located on various Web sites
 - Web sites are incomplete
 - Very little done on the public education component

- **Result = Immediate need to act**



The Team

- **Developing the needed EPI Material: planning and development phase began in April 2006**
- **A joint effort, coordinated by the Oak Ridge Public Affairs Office, involving:**
 - ➔ **NNSA Y-12 Site Office**
 - ➔ **DOE Oak Ridge Office - Emergency Management Program**
 - ➔ **Site Contractors**
 - ➔ **Tennessee Emergency Management Agency (lead agency in coordination with local governments)**
 - ➔ **City of Oak Ridge**
 - ➔ **Oak Ridge Reservation Local Oversight Committee**
- **For the following facilities:**
 - ➔ **Oak Ridge National Laboratory**
 - ➔ **Y-12 National Security Complex**
 - ➔ **Oak Ridge Institute for Science and Education**
 - ➔ **East Tennessee Technology Park**



Overview of Products

Do you know your sector?



If you live within five miles of the Department of Energy's Oak Ridge Reservation, knowing the Sector in which you live and work is important to help you live and work safely in that emergency.

Prepare. Plan. Stay Informed.

Safety of the public is top priority on the Department of Energy's Oak Ridge Reservation. If an emergency occurs affecting the East Tennessee Technology Laboratory, Y-12 National Security Administration, you will be kept informed through the Emergency Sirens. For a copy of the free booklet *What to Do if an Emergency Occurs on the Oak Ridge Reservation*, call (865) 241-4780 or visit the Web site www.oakridge.doe.gov/emergency.

What to Do if an Emergency Occurs on the Oak Ridge Reservation

What to Do if an Emergency Occurs on the Oak Ridge Reservation

A cooperative publication of the following agencies:



• United States Department of Energy
Oak Ridge Office



• National Nuclear Security Administration
Y-12 Site Office



• Tennessee Emergency Management Agency

This document is also available on the Internet at
www.oakridge.doe.gov/emergency
DOE/ORO-2224
December 2006

On the cover: Melton Hill Lake, Oak Ridge, TN

Emergency Public Information

If the Sirens Sound...

- Seek shelter (in your home or nearest building).
- Close all doors and windows.
- Turn off air conditioning/heating systems and window/attic fans.
- Turn on local radio/TV stations for further information.
- Do NOT call 911.

Oak Ridge Reservation Sirens are tested the first Wednesday of every month around noon.
For more information, call (865) 576-0885 or visit
<http://www.oakridge.doe.gov/emergency>

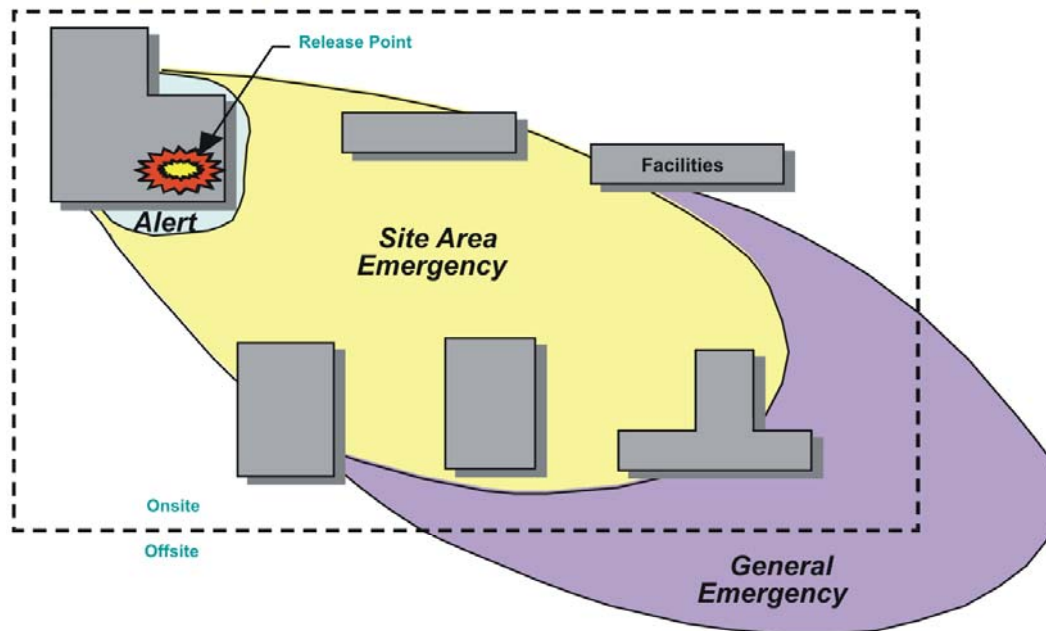


Emergency Public Information



What's Important to You? - Types of Emergencies

Emergency Classification



Alert

Harmful levels of release not exceeding the facility boundary.

Site Area Emergency

Harmful levels of release go beyond the building but are still onsite.

General Emergency

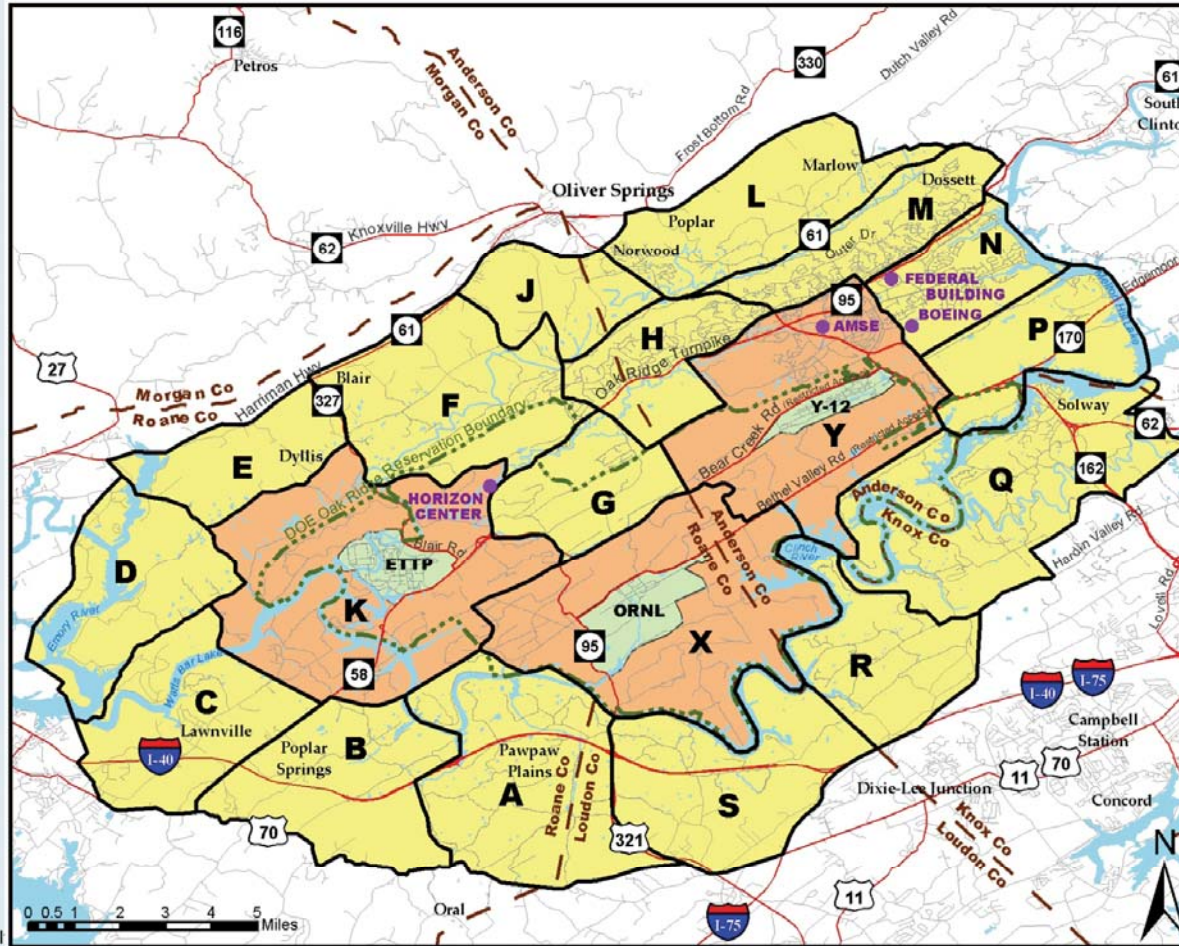
Harmful levels of release have either the potential to or have gone offsite.

Site is defined as the boundaries of either Y-12, ETTP or ORNL.



What's Important To You? – 51,000 people impacted

Sector Map



This legend applies to all sectors on and around the Oak Ridge Reservation.

Shelters

- Anderson County High School**
130 Maverick Circle
Clinton, Tennessee 37716
- Clinton High School**
425 Dragon Drive
Clinton, Tennessee 37716
- Karns High School**
2710 Byington Solway Road
Knoxville, Tennessee 37931
- Lenoir City High School**
1485 Old Highway 95
Lenoir City, Tennessee 37771
- Oak Ridge High School**
127 Providence Road
Oak Ridge, Tennessee 37830
- Roane State Community College**
276 Patton Lane
Harriman, Tennessee 37748

Evacuation Shelters by Sector

	A	B	C	D	E	F	G	H	J	K	L	M	N	P	Q	R	S	X	Y
ETTP	LC	RS	RS	RS	RS	OR	OR	-	-	RS	-	-	-	-	-	-	-	OR	-
ORNL	LC	-	-	-	-	RS	RS	AC	-	RS	-	-	-	-	KHS	KHS	LC	KHS	CHS
Y-12	-	-	-	-	-	RS	RS	RS	RS	-	AC	KHS	CHS	KHS	KHS	LC	-	LC	AC

Legend

AC - Anderson County High School, CHS - Clinton High School, KHS - Karns High School, LC - Lenoir City High School, OR - Oak Ridge High School, RS - Roane State Community College
 A dash in a sector's box indicates that no action is required.

See map and remember:

I live in Sector _____

I work in Sector _____



What's Important to You? – Sources of Information

➤ Where/how do you get information?

➔ Emergency Alert System

➔ DOE Web Site

(www.oakridge.doe.gov/emergency)

WIVK FM 107.7
Radio



WNML FM 99.1/AM 990
Radio



WOKI FM 98.7
Radio



WNOX FM 100.3
Radio



WATE-TV Channel 6
ABC affiliate



WBIR-TV Channel 10
NBC affiliate



WVLT-TV Channel 8
CBS affiliate



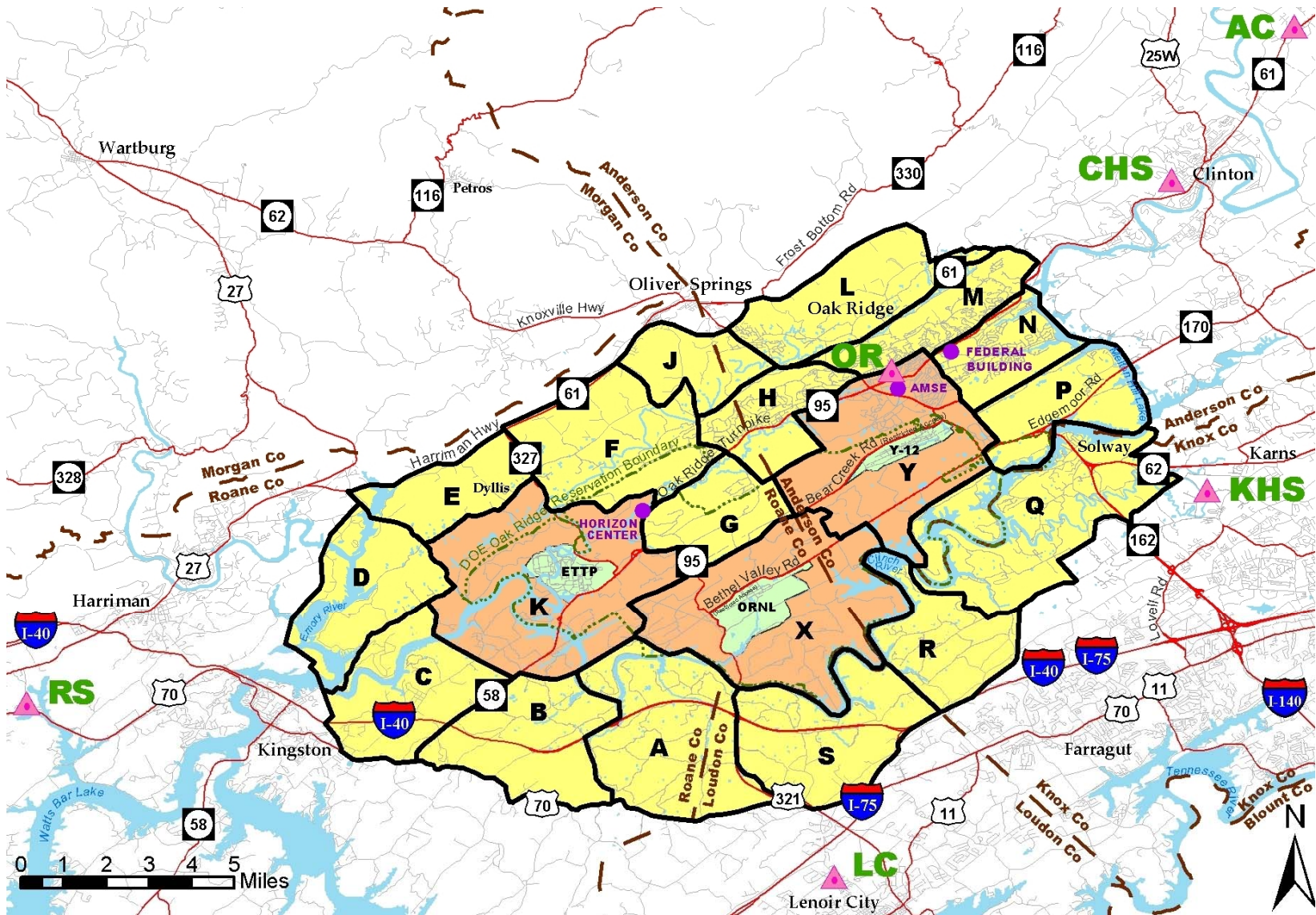
WTNZ-TV Channel 43
FOX affiliate



BBB Communications
Cable Channel 12

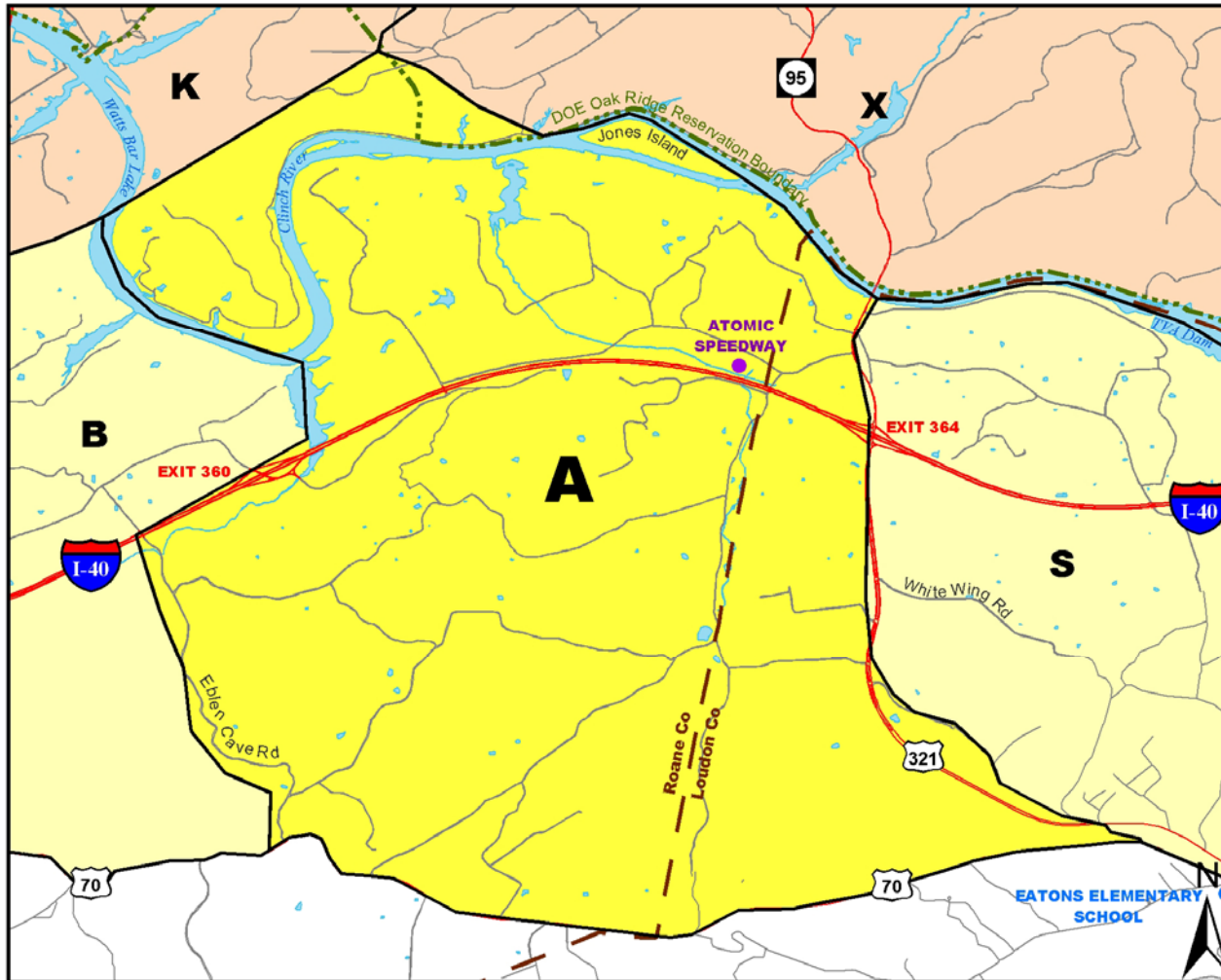


What's Important to You? – Shelter Locations



What's Important To You? – Knowing where to go

➤ Evacuation Routes



Relocation Shelter for Sector A

If there is an emergency at **ETTP** or **ORNL** requiring evacuation, Sector A reports to the shelter at:

Lenoir City High School
1485 Old Highway 95
Lenoir City, Tennessee 37771

Take most direct route to Highway 321. Travel on Highway 321 South toward Lenoir City to Old Highway 95. Travel for approximately 2 miles on Old Highway 95 to Lenoir City High School.



Lessons Learned/Problems Avoided

- **Tasks that take a long time:**
 - ➔ **Research, Writing & Editing**
 - ➔ **Coordination with state & local agencies**
 - ➔ **Printing and Distribution**
- **Assign a project manager**
- **Get local community involvement**
- **Use media to full advantage; they'll participate**

