

Savannah River Site Update



Chuck Hunter
Senior Scientist
Atmospheric Technologies Group

May 7, 2007



We Put Science To Work

1. Upgrades to the SRS Meteorological Data Polling System

Previous system:

- **A VMS-based system (RAQS) polling 10 remote onsite data loggers and 4 data loggers at sites supporting a Mutual Aid Agreement with Augusta/Richmond Co. (GA).**
- **Dedicated telephone lines used as the communication back-bone**

Issues:

- **VMS not longer a supported operating system at SRS**
- **Particular system no longer supported by the vendor and had limited ability to integrate additional sensors**
- **Degrading reliability of telephone circuits**

Upgrade to Meteorological Data Polling System (con't)

Replacement System:

- **A WinOS-based system (EDAS) compatible with the existing ESC data loggers.**
- **Utilizes TCP/IP network communications**

Advantages:

- **A fully supported hardware/software platform**
- **Flexibility needed to integrate data new sensors into the program**
- **More reliable and accessible communications infrastructure.**

2. Support to the SRS Security Force Flight Operations

- **Ceilometer (1) and visibility sensors (4) will be installed and configured to provide real-time data for SRS helicopter operations**
 - **Ceilometer and visibility sensor at helicopter pad**
 - **Visibility sensors at 3 existing met towers**
- **Measurements integrated into existing meteorological monitoring system (data acquisition, database archival, and web-based display)**
- **Visibility sensor now installed.**

3. Office of Biological and Environmental Research

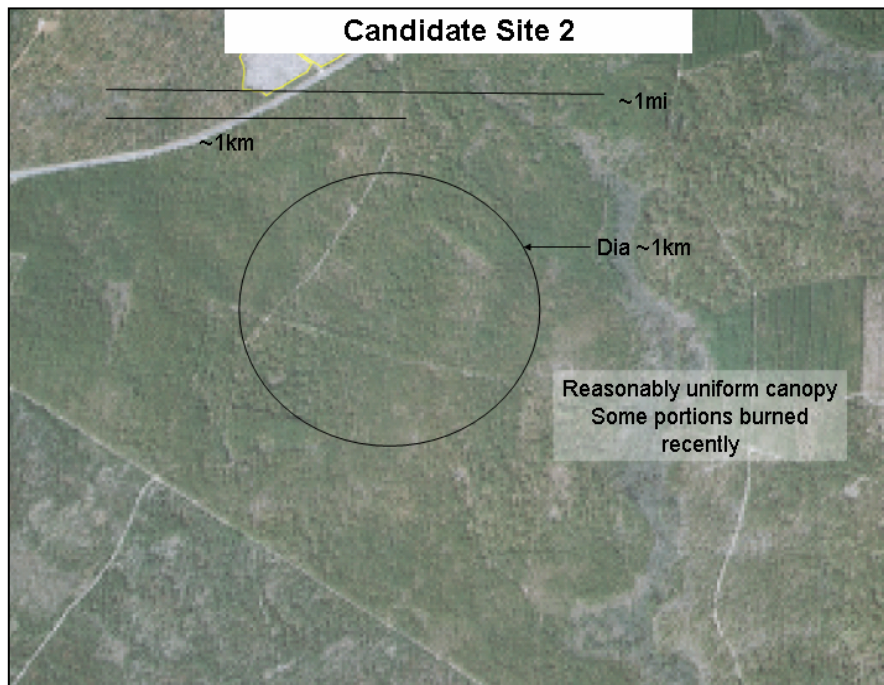
- Establish a “Carbon Flux Super Site” at SRS / SRNL
- Partners: University of Georgia
Brookhaven National Laboratory
NOAA – Global Monitoring Division
USDA Forest Service – Savannah River



Research Goals

Establishment of an AmeriFlux site at the SRS

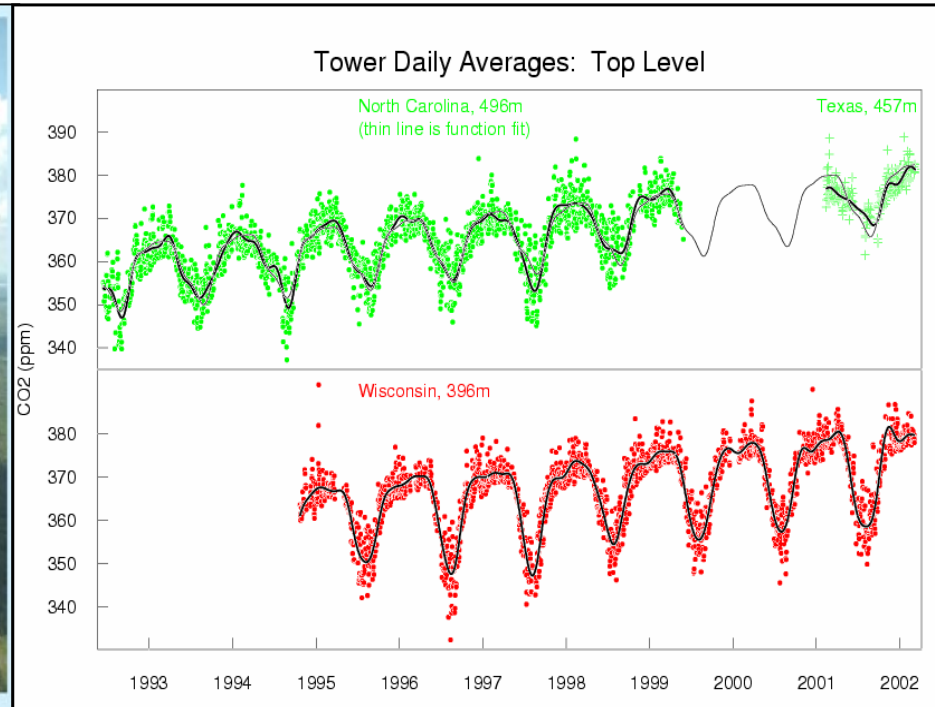
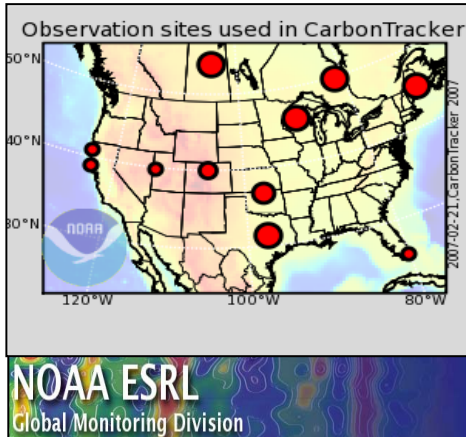
- Advanced monitoring system
- Key location in the Southeast



Research Goals

Assist NOAA-GMD with use of tall tower near the SRS

- Continuous monitoring of trace gases
- Key location in the Southeast



Research Goals

Nocturnal forest canopy tracer studies

- Better understanding of CO₂ exchange
- BNL passive tracer technologies

