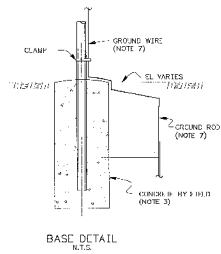
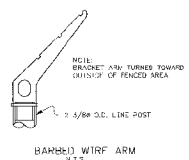
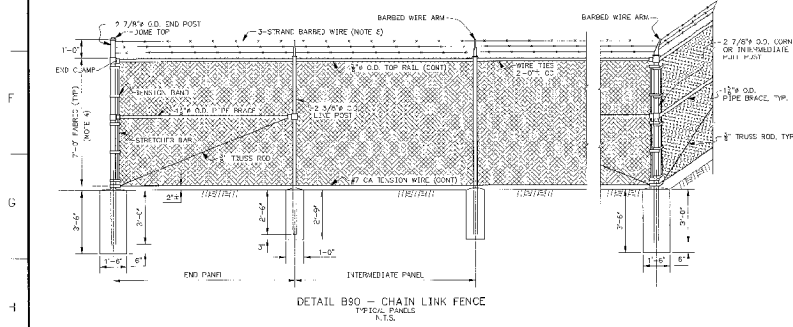


- NOTES:
 1. FOR PARAPETS 15' AND 17' HIGH SEE 10W425-B1.
 2. FOR PILES SEE 10W425-B6.



- CHAIN LINK NOTES:
 1. ALL FENCING WORK SHALL BE DONE IN ACCORDANCE WITH STANDARD INDUSTRY PRACTICE.
 2. END CLAMP SHALL BE AS SHOWN OR IN IMMEDIATE NEAR EQUIV.
 3. CONCRETE SHALL BE 2 ASS. 3" MAX. SECTION 400 CH. (FC) GENERAL CONSTRUCTION SPECIFICATION NO. 71.
 4. FENCING TO BE 2-7/8" X 3-1/2" COATED TYP. 2 CHAIN LINK FENCE FABRIC WITH THREE STRANDED (1-1/2" DIAMETER WIRE TOPPING 400#) HIGH WITH 2" ZINC COATED BOTTOM LARGEST RAIL MATERIAL AND 1-1/2" GALVANIZED 2" WIDE BY 1/4" THICKNESS RAIL. GROUND ROD SHALL BE 2" DIA. WITH 3" DIA. END CAP. FENCING SHALL COMPLY WITH ASTM F1633, DESIGN GROUP 10 AND INCLUDE POSTS, BRACING, TOP RAILS, SUN LENS BARS, HEDS ALIEN, AND FINISH WRAP. (SEE 10W425-B1).
 5. ALL POSTS AND OTHER APPURTENANCES SHALL BE HOT DIP GALVANIZED.
 6. ALL DAMAGED GALVANIZING SHALL BE REPAIRED BY USE OF ZINC PAINT.
 7. FIELD WORK FOR ELECTRICAL GROUNDING:
 GROUND FENCE AT APPROXIMATELY 95 FEET INTERVALS BY CLAMPING 2/0 GROUND CABLE TO FENCE POSTS AND TERMINATE SAME TO 5/8" X 8'-0" GROUND ROD LOCATED APPROXIMATELY 1/2'-0" INSIDE FENCE, DRIVEN SO THAT THE TOP OF GROUND ROD IS 6" BELOW GRADE SURFACE. SUBSTITUTED GROUND ALL CORNER AND END POSTS.
 8. BARBED WIRE TO BE ALUMINUM COATED STEEL.



DATE	BY	CHKD	APP'D	SCALE	NO.
10/24/90	JM	JK	JK	1" = 50'	10W425-90

SCALE: 1" = 50'
 1/4" DIA. AS SHOWN

DREDGE CELL
 DIKE RESTORATION
 SECTION & DETAILS - SHEET 3

KINISTON FOSSIL PLANT
 TENNESSEE VALLEY AUTHORITY
 10W425-90