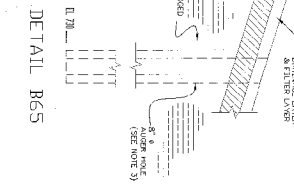
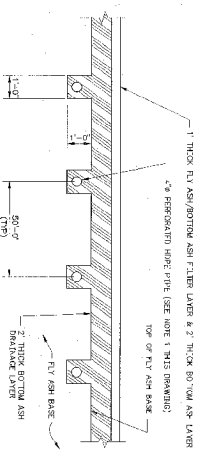


SECTION A-E
 TYPICAL CROSS SECTION
 INITIAL PHASE 2/PHASE 3 CONSTRUCTION

SCALE: 1" = 10' HORIZONTAL
 1" = 2' VERTICAL



DETAIL B65



SECTION C65

NOTES

1. SEE DIMENSIONS LIST AND LEGEND SET DWA45-20
2. FIVE (5) ROWS SOUTH OF THE EXISTING CELL SHALL BE STABILIZED AFTER THE EXISTING CELL IS COMPLETED. THESE ROWS SHALL BE STABILIZED IN ACCORDANCE WITH ASV D-714. A TENSION SHIELD SHALL BE INSTALLED IN ACCORDANCE WITH ASV D-714.
3. HOSE PIPING AND FITTINGS SHALL BE JOINED BY BOLT-TIGHTENING. IN ACCORDANCE WITH THE MANUFACTURER'S INSTRUCTIONS.
4. ACCORDANCE WITH ASV FROM THESE SHALL BE EQUAL TO THE ASV OF THE EXISTING CELL.
5. ACCORDANCE WITH ASV FROM THESE SHALL BE EQUAL TO THE ASV OF THE EXISTING CELL.
6. ACCORDANCE WITH ASV FROM THESE SHALL BE EQUAL TO THE ASV OF THE EXISTING CELL.

DREDGE CELL		LATERAL EXPANSION PHASE 2/3	
TYPICAL CROSS SECTION & DETAILS			
DATE	BY	SCALE	PROJECT
10/14/23	J. S. [Signature]	1" = 10' HORIZONTAL 1" = 2' VERTICAL	10W423-65
KINGSTON FOSSIL PLANT		TENNESSEE VALLEY AUTHORITY	
PROJECT NUMBER		SCALE	
10W423-65		1" = 10' HORIZONTAL 1" = 2' VERTICAL	
PROJECT LOCATION		DRAWN BY	
FOSSIL PLANT		J. S. [Signature]	
FOSSIL PLANT		CHECKED BY	
FOSSIL PLANT		E. S. [Signature]	
FOSSIL PLANT		APPROVED BY	
FOSSIL PLANT		[Signature]	

