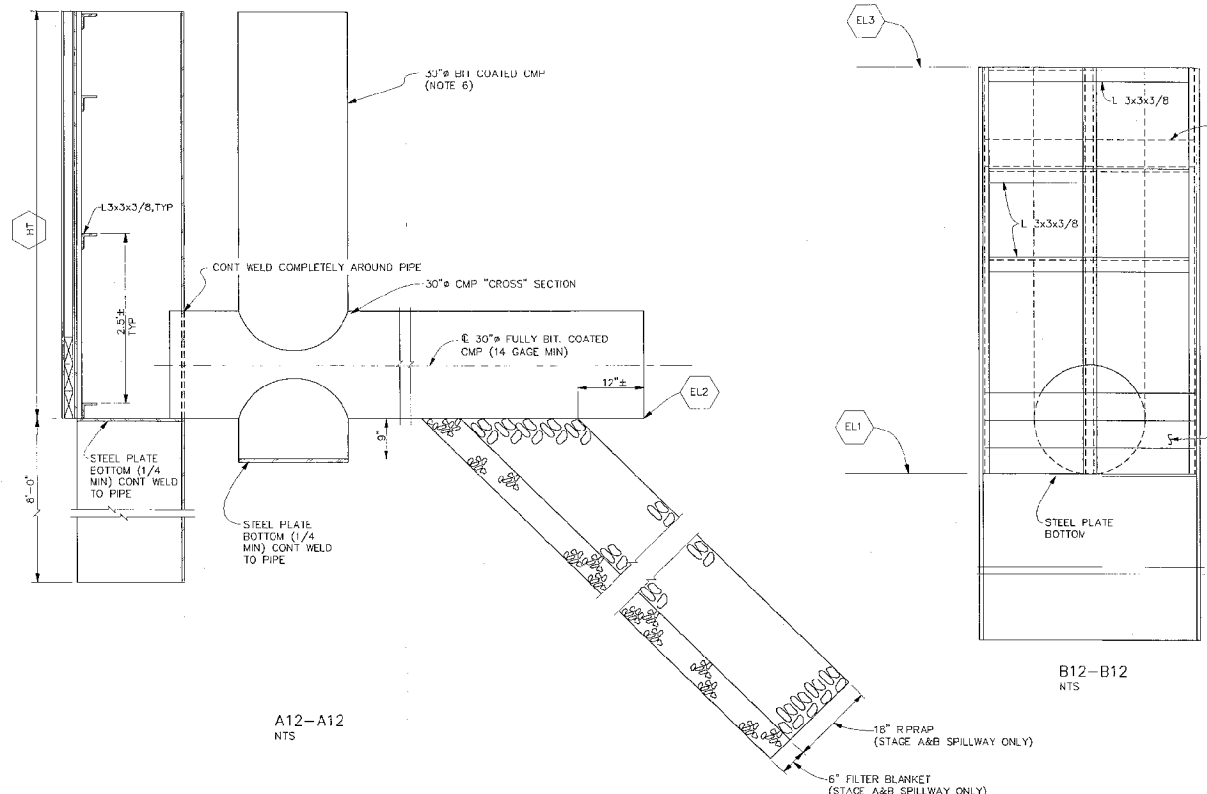
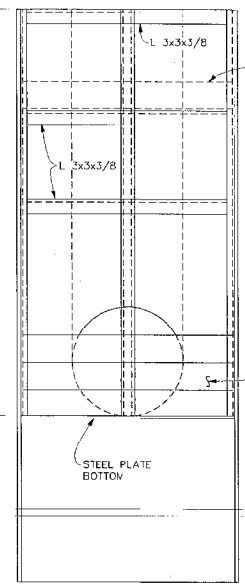


PLAN-METAL SPILLWAY
NTS



A12-A12
NTS

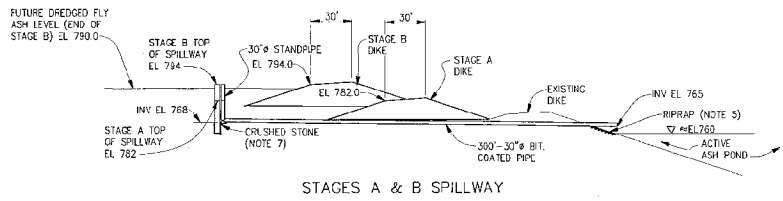


B12-B12
NTS

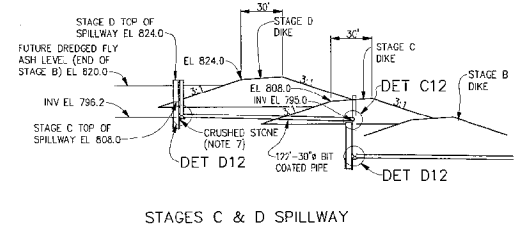
- NOTES:
1. ALL TIMBER SHALL BE SOUTHERN PINE NO. 2 DENSE SELECT TIMBER.
 2. ALL WOOD SHALL BE PRESSURE TREATED WITH 0.4-0.6 POUNDS OF PRESERVATIVE PER CUBIC FOOT OF WOOD. THE PRESERVATIVE SHALL BE HOLMAN PRESERVATIVE COA BY KOPPERS OR EQUAL.
 3. ALL NAILS SHALL BE GALVANIZED.
 4. 30 INCH CORRUGATED METAL PIPE SHALL BE FULLY BITUMINOUS COATED AND 14 GAGE (MIN) THICKNESS.
 5. RIPRAP SHALL CONSIST OF 50% OF THE STONES WEIGHING 100 LBS EACH OR GREATER, PER SECTION 575.
 6. 30 INCH CROSS SECTION AND STANDPIPE NOT REQUIRED FOR STAGE E SPILLWAY.
 7. A 6" X 6" HOLE SHALL BE EXCAVATED TO A DEPTH OF 8" FOR PLACEMENT OF THE 48" HALF-PIPE. THE AREA IS TO BE BACKFILLED WITH 1032 CRUSHED STONE AND COMPACTED UNTIL A STABLE BASE IS ACHIEVED.

DIMENSION	STAGE				
	A	B	C	D	E
EL1	768.0	768.0	795.2	795.2	825.5
EL2	765.0	765.0	795.0	795.0	825.0
EL3	782.0	794.0	808.0	824.0	840.0
EL4	780.0	792.0	805.0	822.0	836.0
HT	14.0'	26.0'	11.8'	27.8'	14.5'

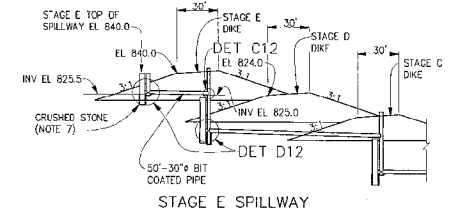
ITEM	A	B	STAGE C	D	E	UNIT
CHANNE. (C3X4.1 MIN)	42	36	36	48	44	LF
ANGLE (L3X3X3/4 MIN)	20	16	16	24	20	LF
STEEL PLATE (1/4" MIN)	114	---	114	---	114	LB
48" DIA. CMP	11	6	10	8	12	LF
30" DIA. CMP CROSS SECT.	1	---	1	---	1	EA
30" DIA. CMP TEE SECT.	---	---	1	---	1	EA
30" DIA. CMP	312	12	134	16	62	LF
2" X 6" BOARD	96	96	80	128	96	LF



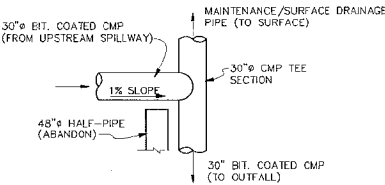
STAGES A & B SPILLWAY



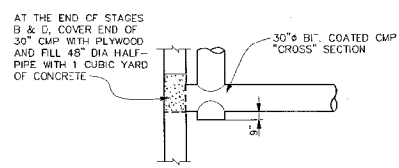
STAGES C & D SPILLWAY



STAGE E SPILLWAY



DETAIL C12
SPILLWAY CONNECTION
1"=5'



DETAIL D12
BOTTOM OF SPILLWAY
1"=5'



SCALE: 1"=40'

YARD

**DREDGE CELLS
SPILLWAY / SKIMMER DETAILS**

DESIGNED BY:	DATE:	CHECKED BY:	DATE:	PROJECT:	NO. SHEETS:
B.K. ELDER		G.C. LAWSON		10425-12	12

APPROVED BY: W.D. HALL

**KINGSTON FOSSIL PLANT
TENNESSEE VALLEY AUTHORITY
FOSSIL AND HYDRO ENGINEERING**

AUTOCAD R14 36 C 10425-12 R 0