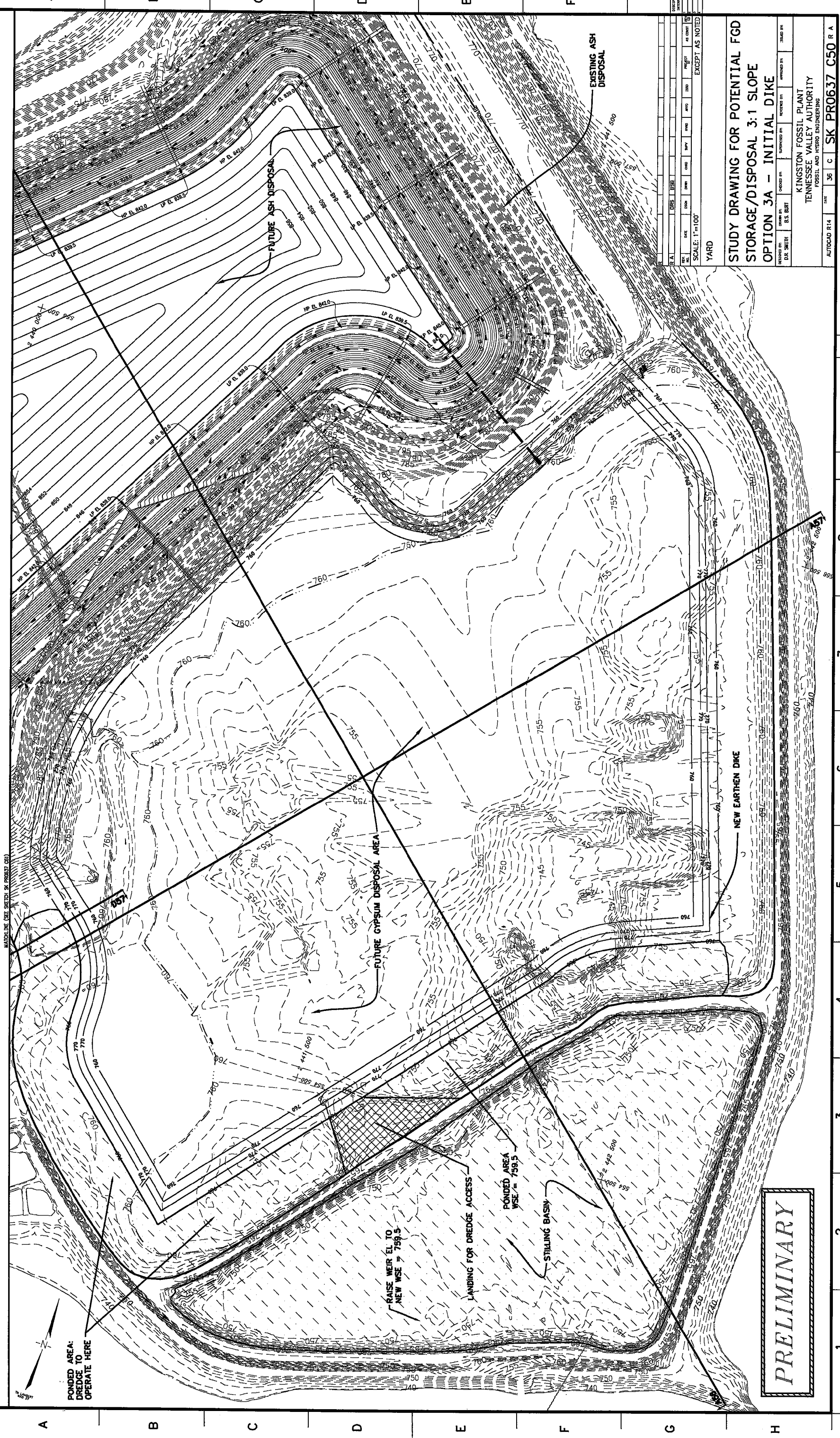


050 L90R4 SK C 96

2 3 4 5 6 7 8 9 10 11 12



PONDED AREA:
DREDGE TO
OPERATE HERE

RAISE WEIR EL TO
NEW WSE 799.5

LANDING FOR DREDGE ACCESS

PONDED AREA
WSE 795.5

STILLING BASIN

NEW EARTHEN DIKE

FUTURE ASH DISPOSAL

FUTURE GYPSUM DISPOSAL AREA

EXISTING ASH
DISPOSAL

PRELIMINARY

NO.	DATE	BY	CHKD BY	APP'D BY	AS NOTED
1	05/02/03	SK	SK	SK	EXCEPT AS NOTED

**STUDY DRAWING FOR POTENTIAL FGD
STORAGE/DISPOSAL 3:1 SLOPE
OPTION 3A - INITIAL DIKE**

KINGSTON FOSSIL PLANT
TENNESSEE VALLEY AUTHORITY
FOSSIL AND HYDRO ENGINEERING

AUTOCAD R14
DATE: 05/02/03
SCALE: 1"=100'
PLOT FACTOR: 1200
M, TVA
SK PR0637 C50 R A

PARSONS
DATE COMPLETED BY: A

REV NO: 1

REV NO: 2

REV NO: 3

REV NO: 4

REV NO: 5

REV NO: 6

REV NO: 7

REV NO: 8

05/02/03 03:59:16 PM, p0084919