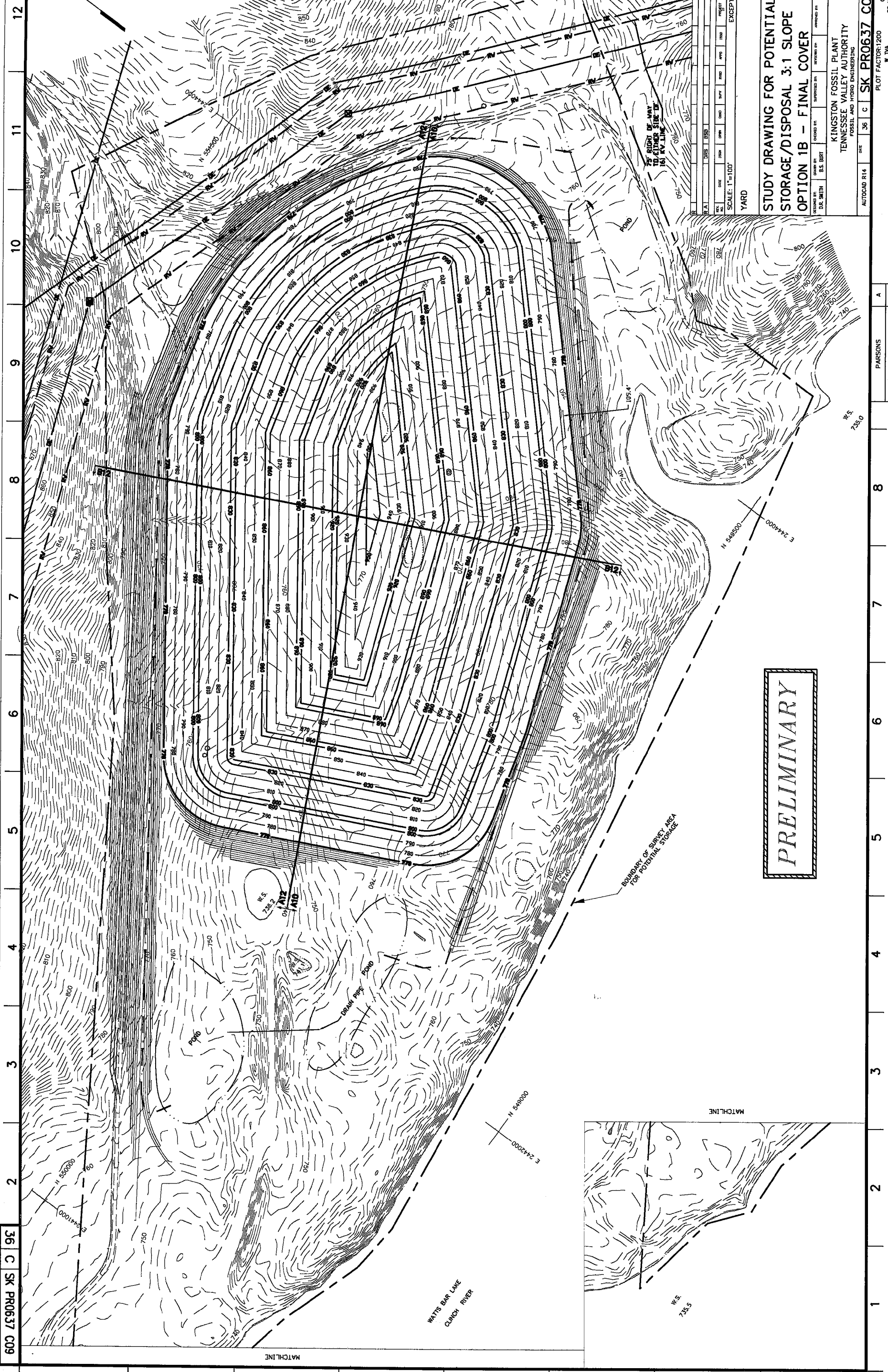


600 L590R4 SK PR0637 C09



PRELIMINARY

NO.	DATE	BY	CHKD BY	AS NOTED
1	05/02/03	DR. SMITH	E.S. BRET	
2				
3				
4				
5				
6				
7				
8				
9				
10				
11				
12				

SCALE: 1"=100'  
YARD  
EXCEPT AS NOTED

**STUDY DRAWING FOR POTENTIAL FGD STORAGE/DISPOSAL 3:1 SLOPE OPTION 1B - FINAL COVER**

KINGSTON FOSSIL PLANT  
TENNESSEE VALLEY AUTHORITY  
FOSSIL AND HYDRO ENGINEERING

DATE: 06 C SK PR0637 C09 R A  
AUTOCAD R14  
PLOT FACTOR: 1200  
N. VA  
C.A.D. DRAWING  
DO NOT ALTER MANUALLY

TASK COMPLETED BY:	REV NO
PARSONS	A

05/02/03 03:58:55 PM, p0084919