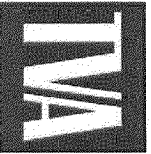


Kingston Peninsula Site

Alternative Phasing Considerations Meeting with TDEC

March 8, 2007

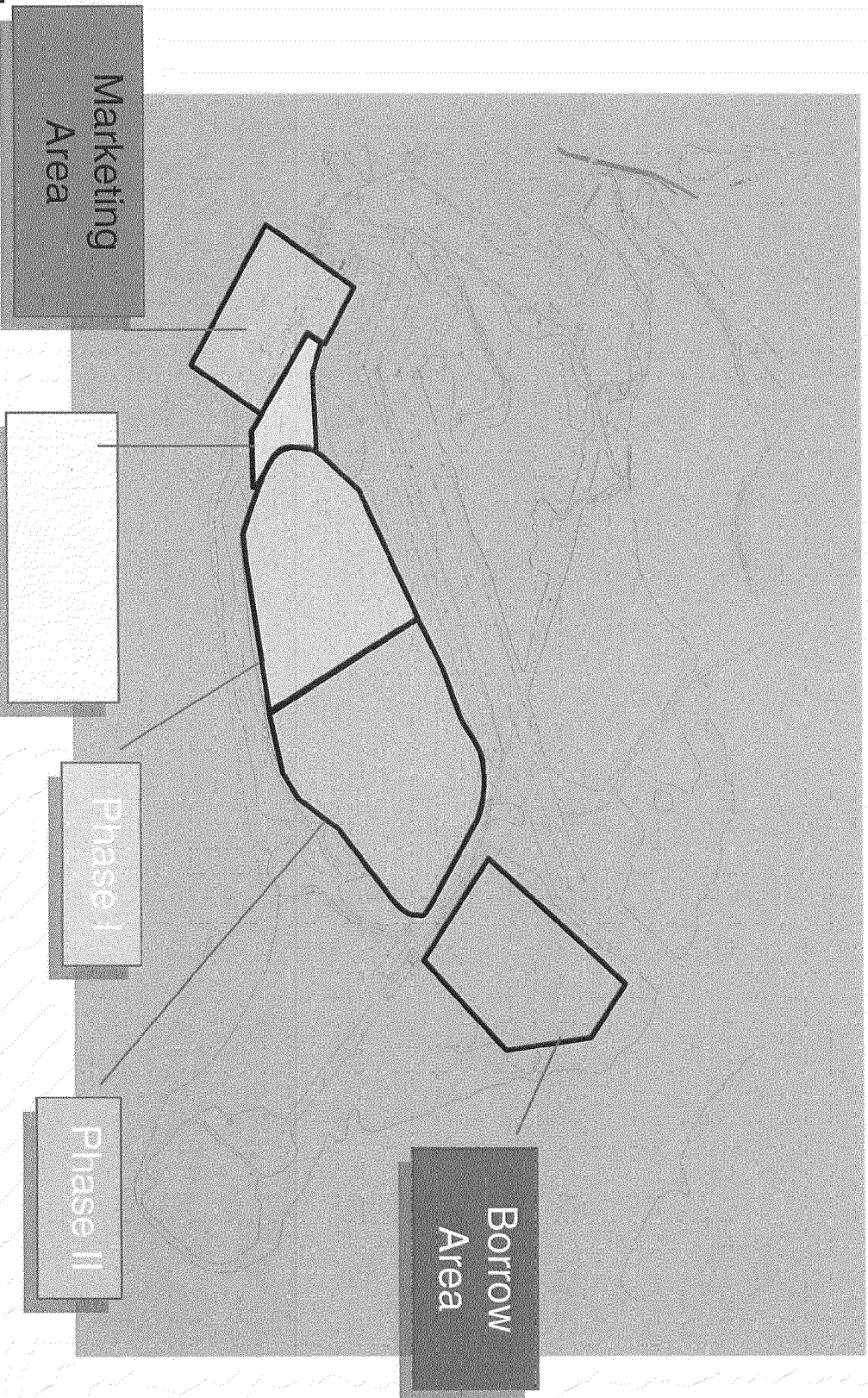


Agenda

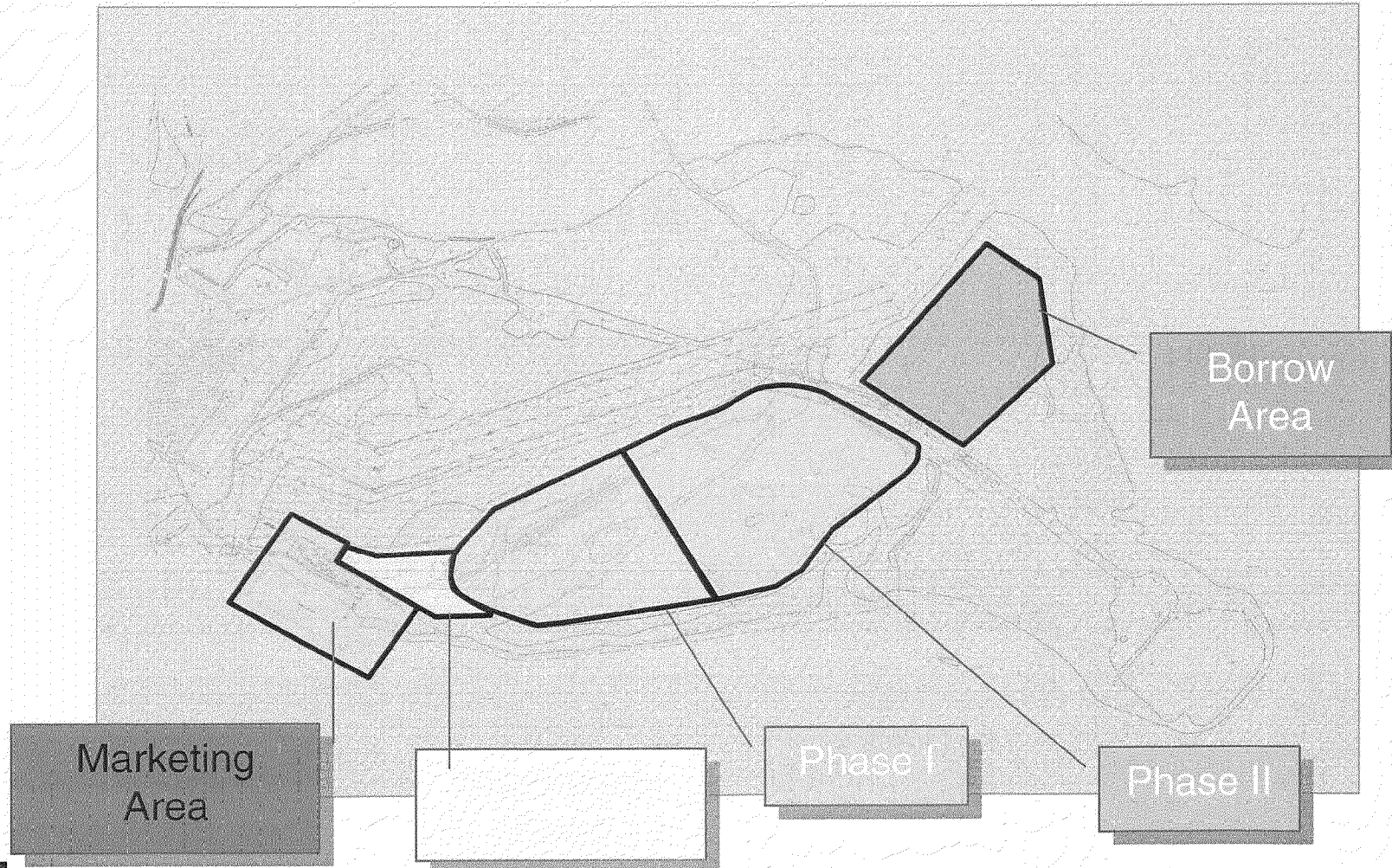
1. Introductions – Larry Bowers
2. Review of State Concerns – Glen Pugh and Rick Brown
3. TVA Response – Neil Davies/Lynn Petty
4. ARAP 404 Permitting Status and Schedule – Lynn Petty
5. Discussion – Group
6. Path Forward and Next Steps
7. Site Tour



Site Layout and Features – As Designed

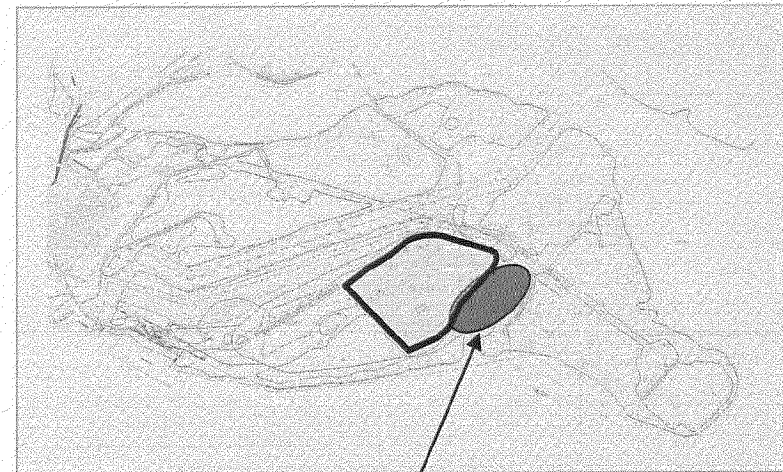


Site Layout and Features – Alternative Phasing



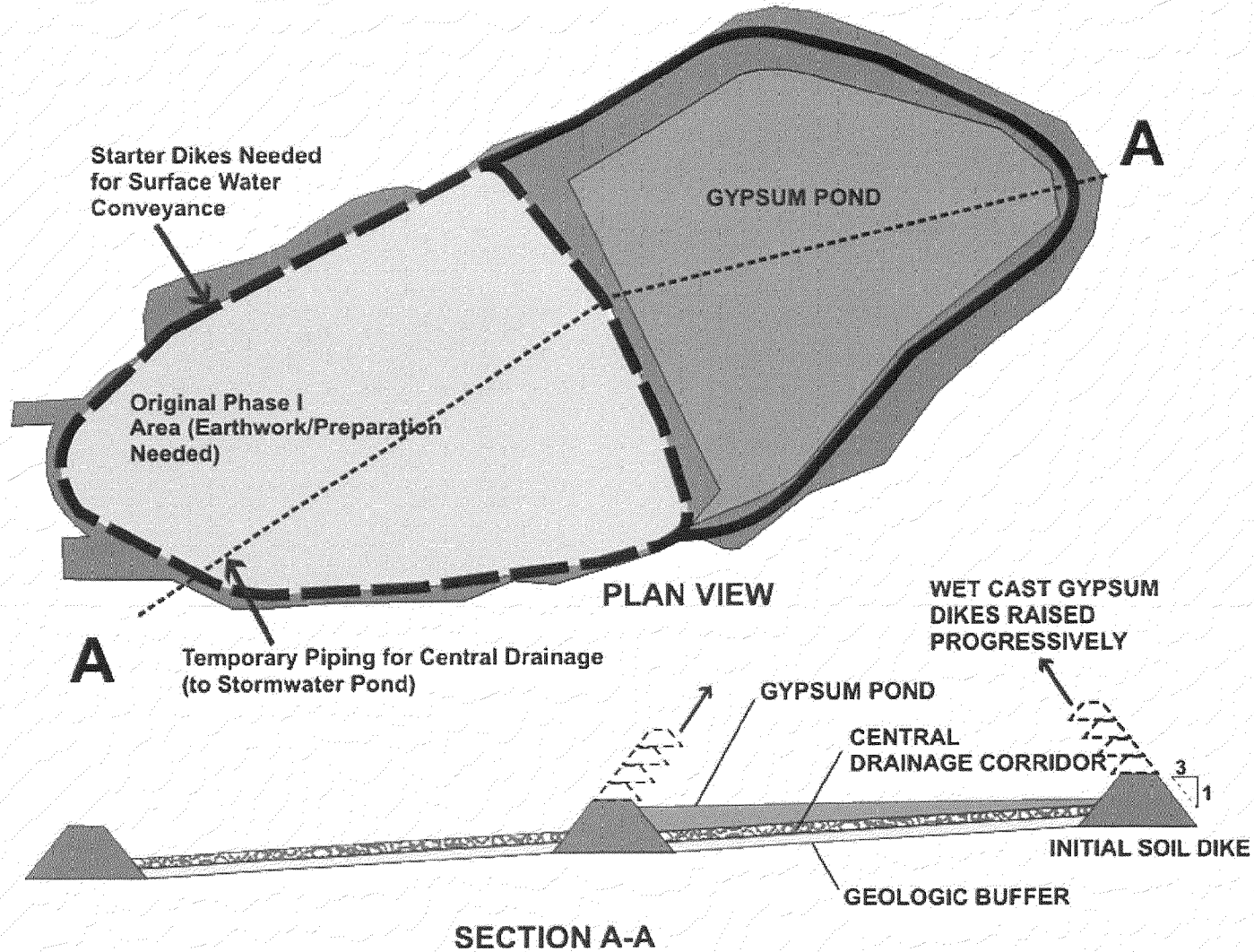
Issues Associated with Alternative Phasing

- Stormwater pond is currently located in “optimum” location:
 - Downgradient of site development
 - Shortest distance to proposed outfall
 - Adjacent to marketing area
 - Only feasible alternative location would adversely impact additional wetland area
 - For full-build-out, original location would still be required
- Assume alternative phasing maintains current stormwater pond location



Potential Alternative
Stormwater Pond
Location

Site Layout and Features – Alternative Phasing



Technical Issues – Alternative Phasing

- Initial build-out would result in greater site disturbance:
 - Stormwater pond needed from start of construction
 - Borrow material needed at an earlier stage
 - May need to conduct filling in originally proposed Phase I area (easier hauling prior to construction of Phase II)
- Stormwater Management is problematic/inefficient
 - Originally proposed Phase I starter dikes needed since these include perimeter stormwater ditch to convey water to stormwater pond
 - Alternative would be to pump large volumes of stormwater to pond
 - Temporary sumps/pumps
 - Double pumping of stormwater
- Internal Drainage (central drainage corridor)
 - Additional pump station needed; or
 - Construct piping through original Phase I area



Before



After



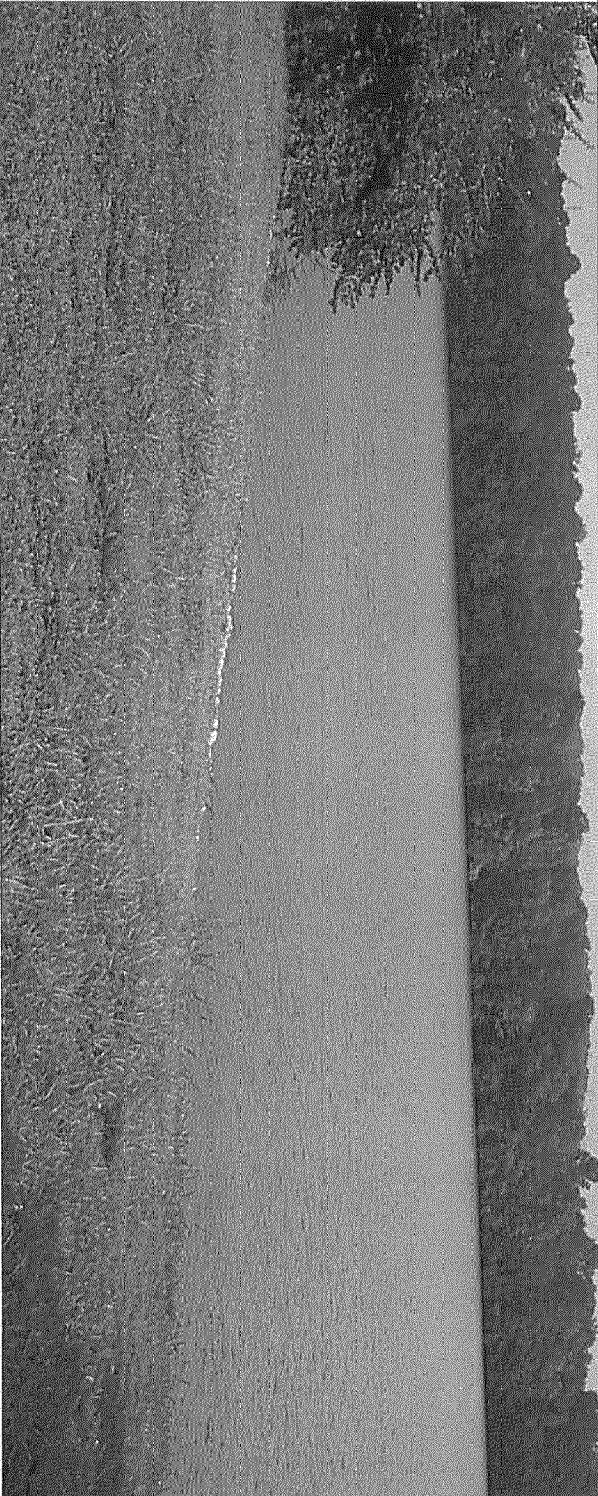
TVA

Geosyntec
consultants

Before

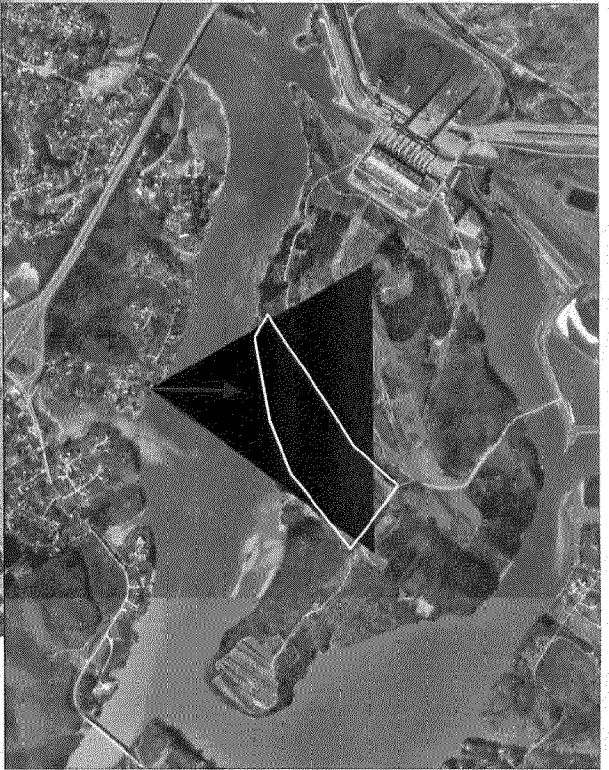
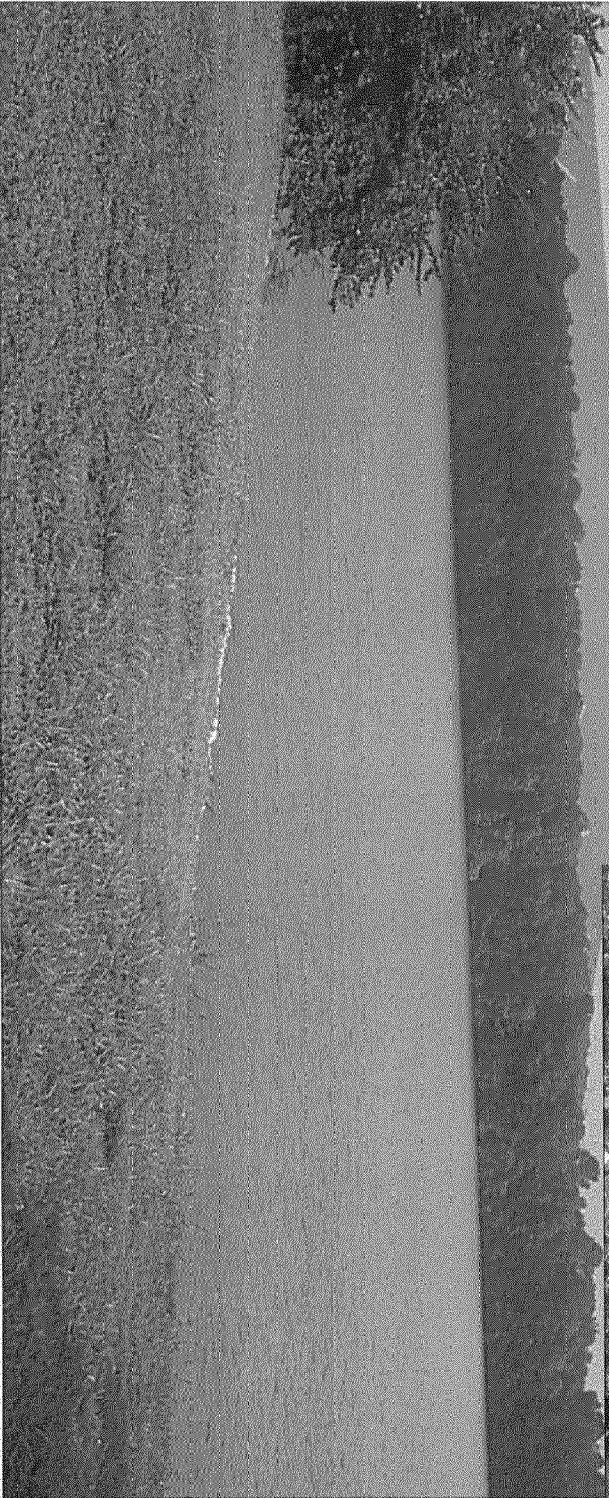


35° 53' 11.78" N
84° 30' 22.58" W
Ele. 750 ft-msl



After

35° 53' 11.78" N
84° 30' 22.58" W
Ele. 750 ft-msl



Summary

- Without extensive re-design, alternative phasing would result in:
 - Increased initial land disturbance
 - Early use of borrow area
 - Construction of original Phase I dikes and infrastructure
 - Increased likelihood or earlier development of full buildout due to lower initial airspace)



ARAP and 404 Permit

- TDEC/USACE have verbally agreed to mitigation proposal
- Application with mitigation proposal to be submitted March 9, 2007
- TVA is requesting a Public Hearing on the ARAP to accelerate timing/schedule
- TVA expects approval August 15, 2007

