

HWY 27

EXIST R/R

EXIST R/R BRIDGE

BULLARD BRANCH

FISKE ROAD

BRIDGE #2

FUTURE BRIDGE AND SITE OF DRILLING

EMORY RIVER

BRIDGE # 1



EMORY RIVER

FUTURE BRIDGE
+ SITE OF
DRILLING

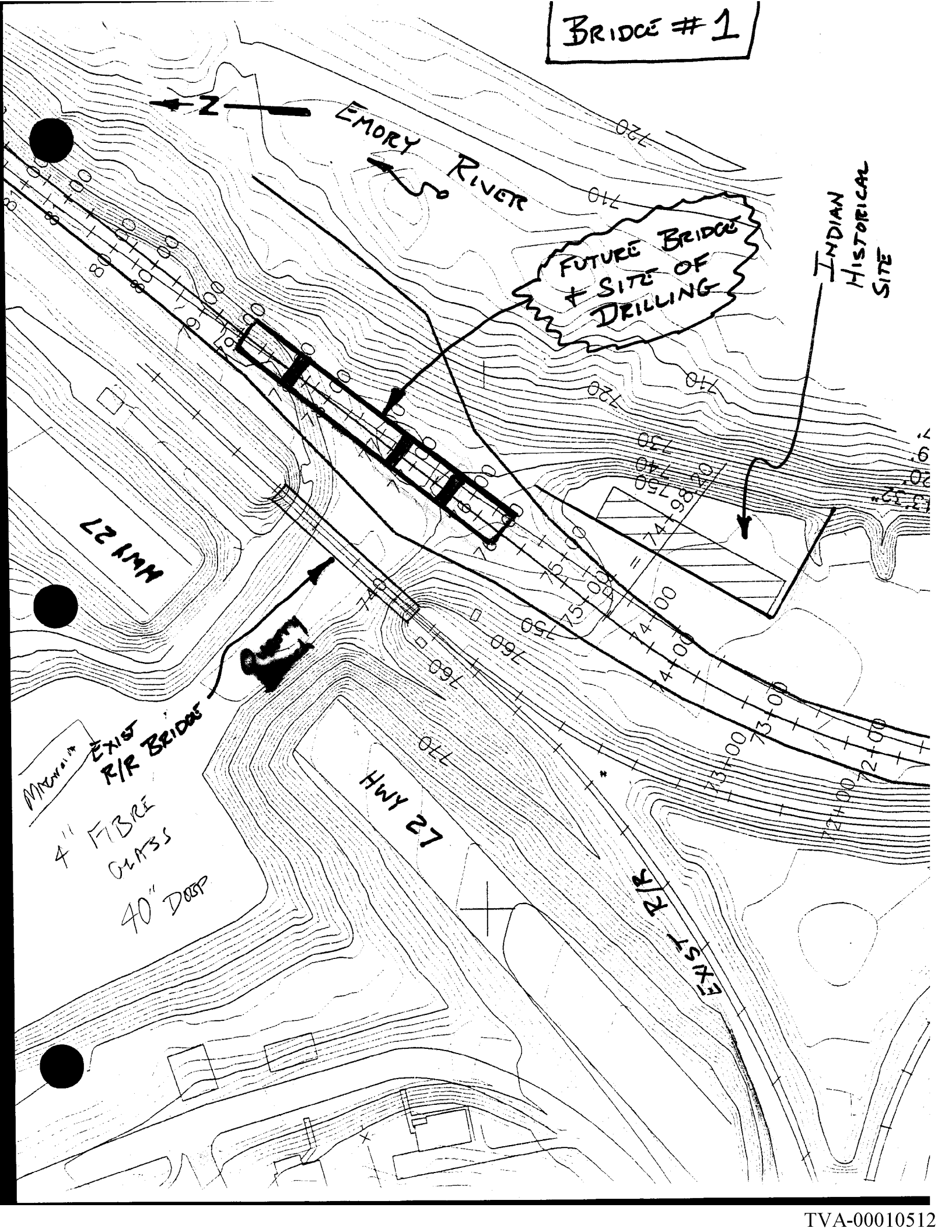
INDIAN
HISTORICAL
SITE

HWY 27

HWY 27

EXIST
R/R

EXIST
R/R BRIDGE
4" FIBRE
GLASS
40" DEEP



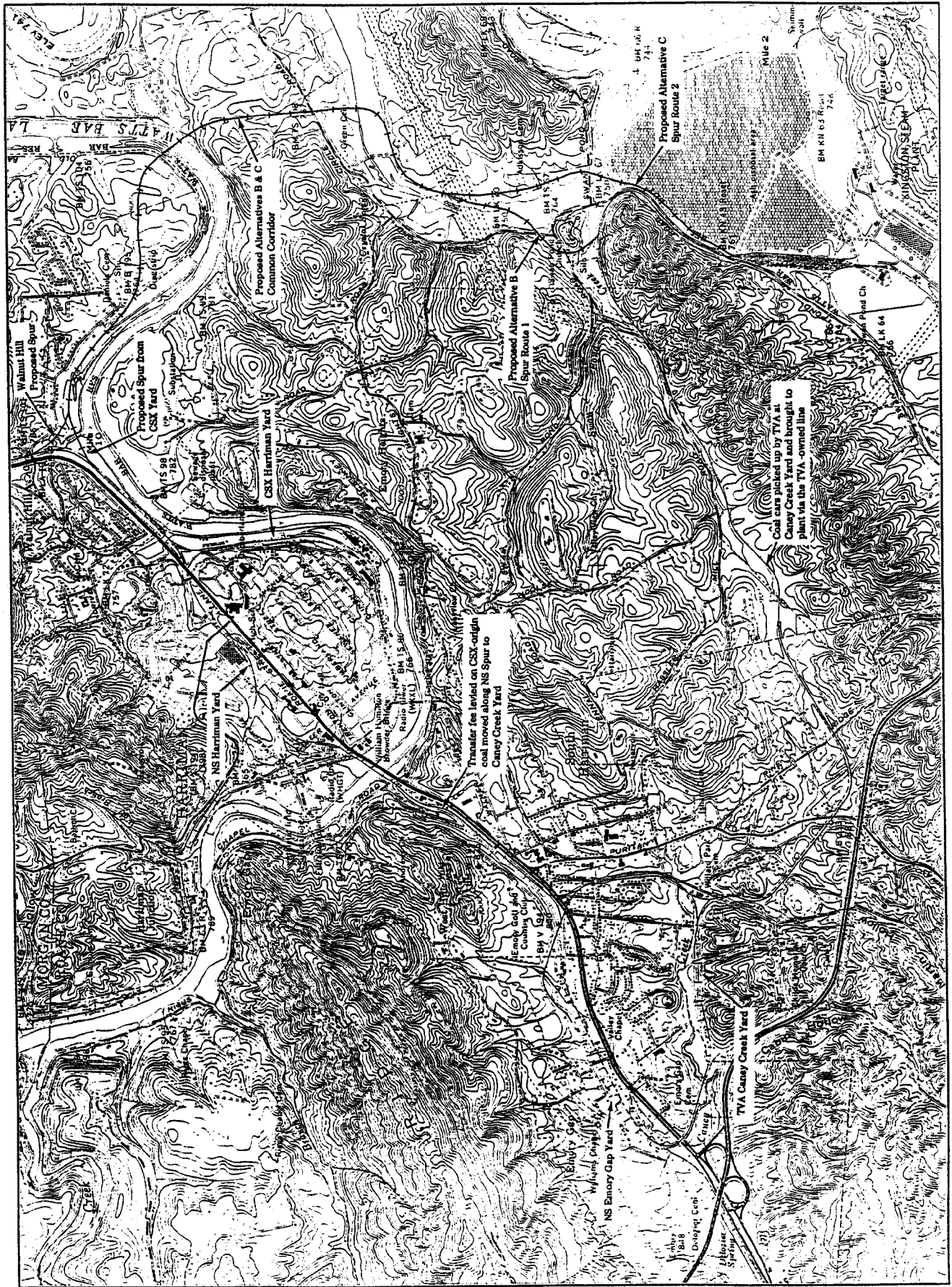
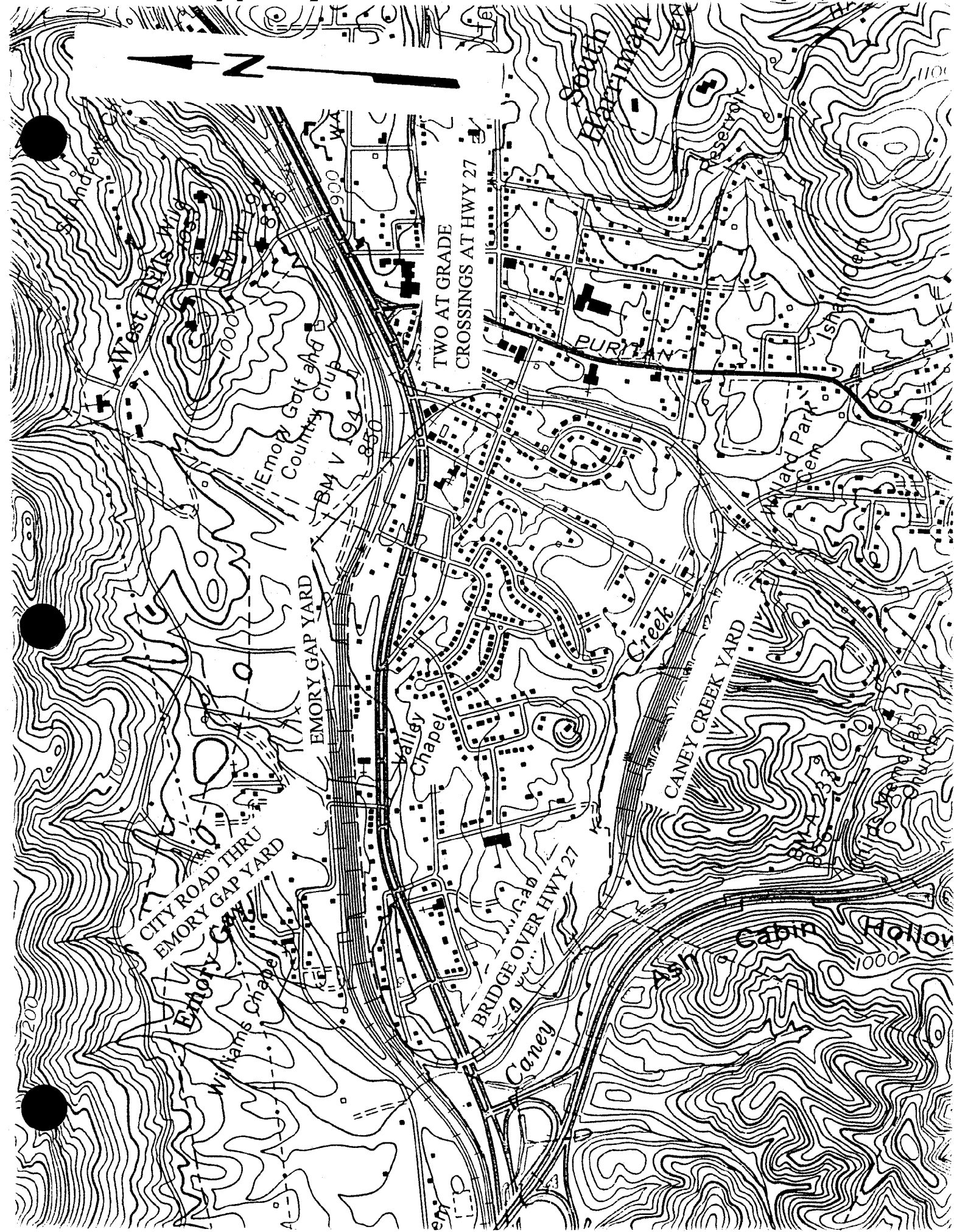
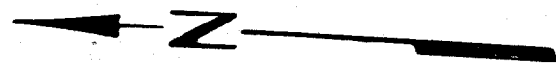
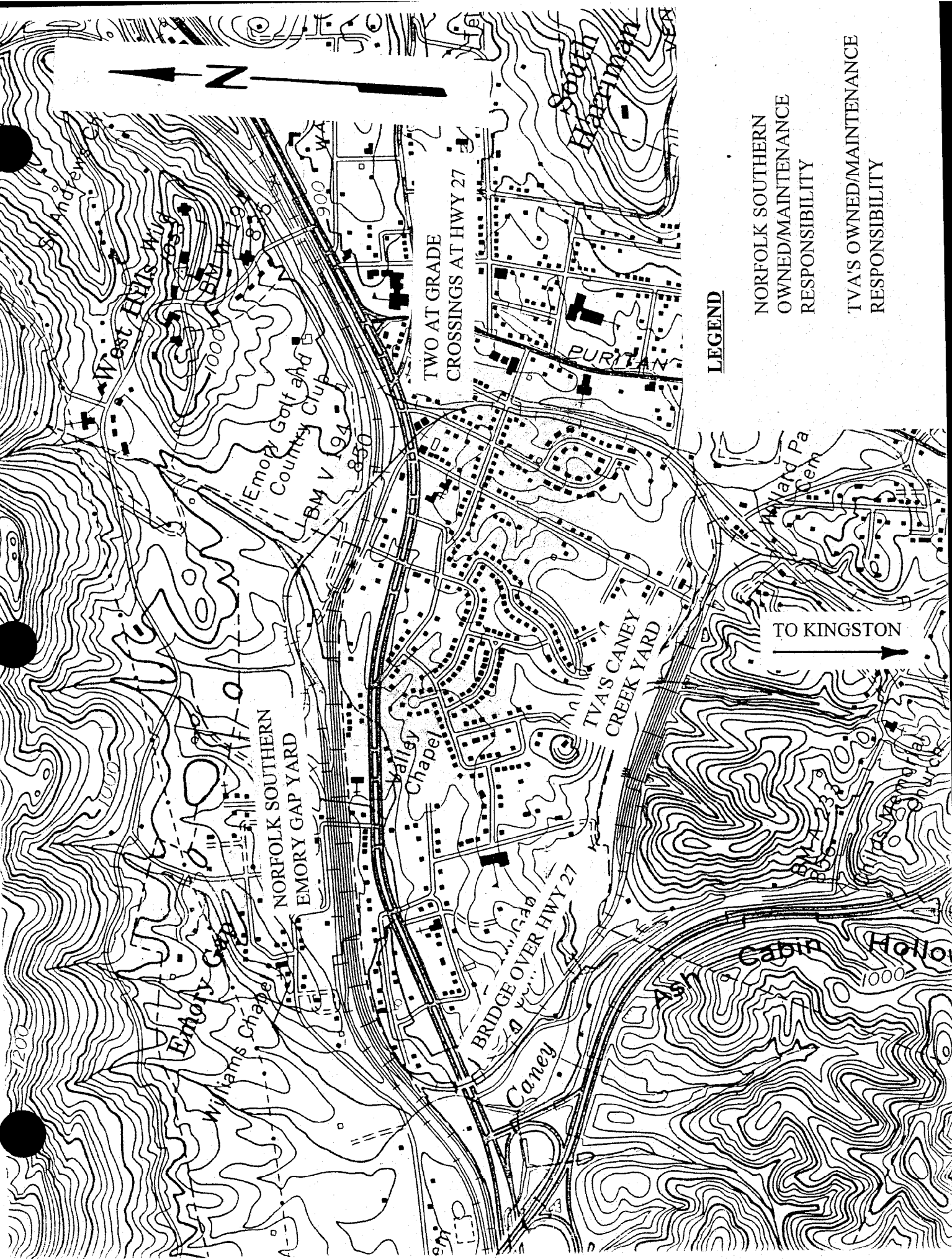


Figure 1 - A Kingston Fossil Plant, Alternative Coal Receiving System





TWO AT GRADE
CROSSINGS AT HWY 27

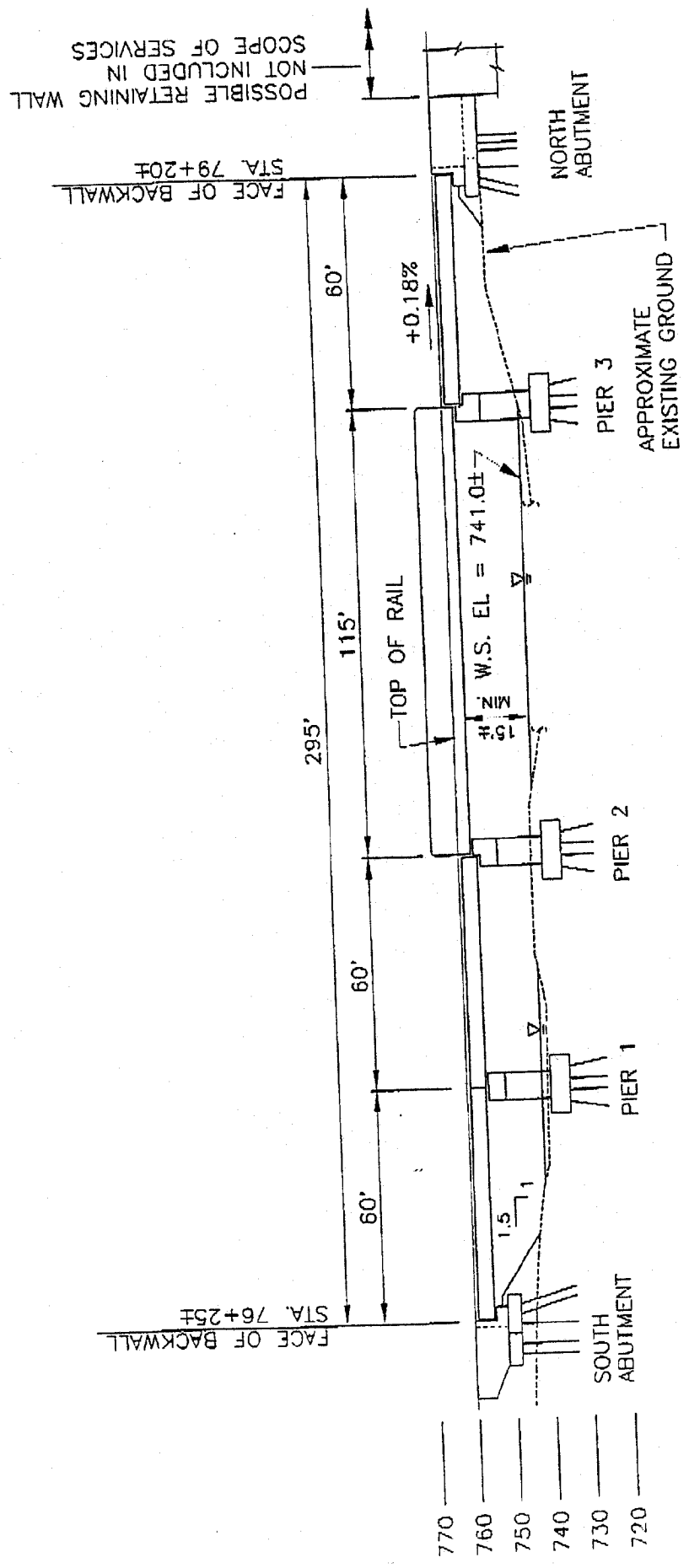
LEGEND

- NORFOLK SOUTHERN OWNED/MAINTENANCE RESPONSIBILITY
- TVA'S OWNED/MAINTENANCE RESPONSIBILITY

TO KINGSTON



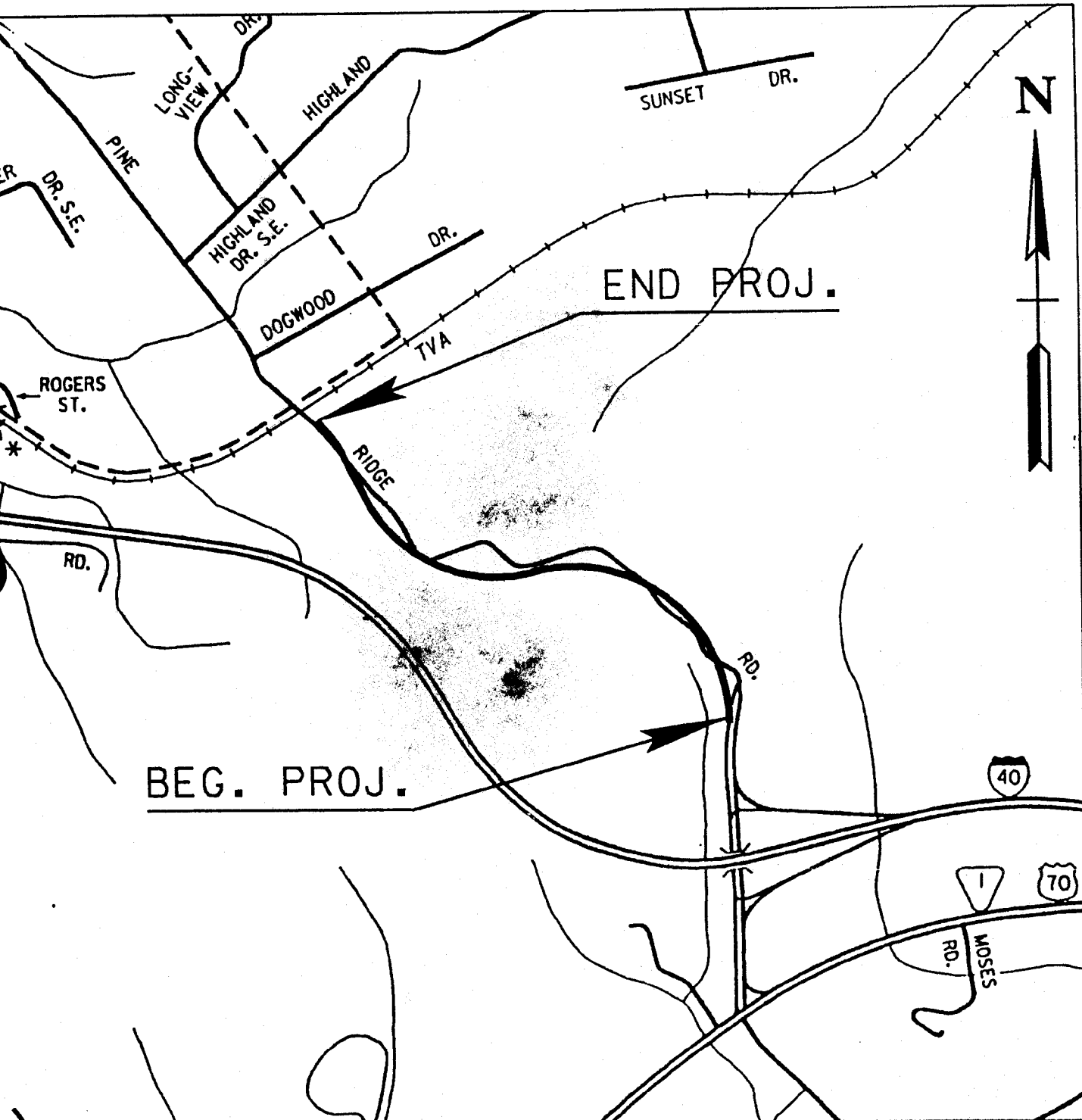
PROP. NO. 9822
DATE: 11 JULY 1997



ELEVATION VIEW
BRIDGE NO. 1 OVER UNNAMED STREAM
N.T.S.

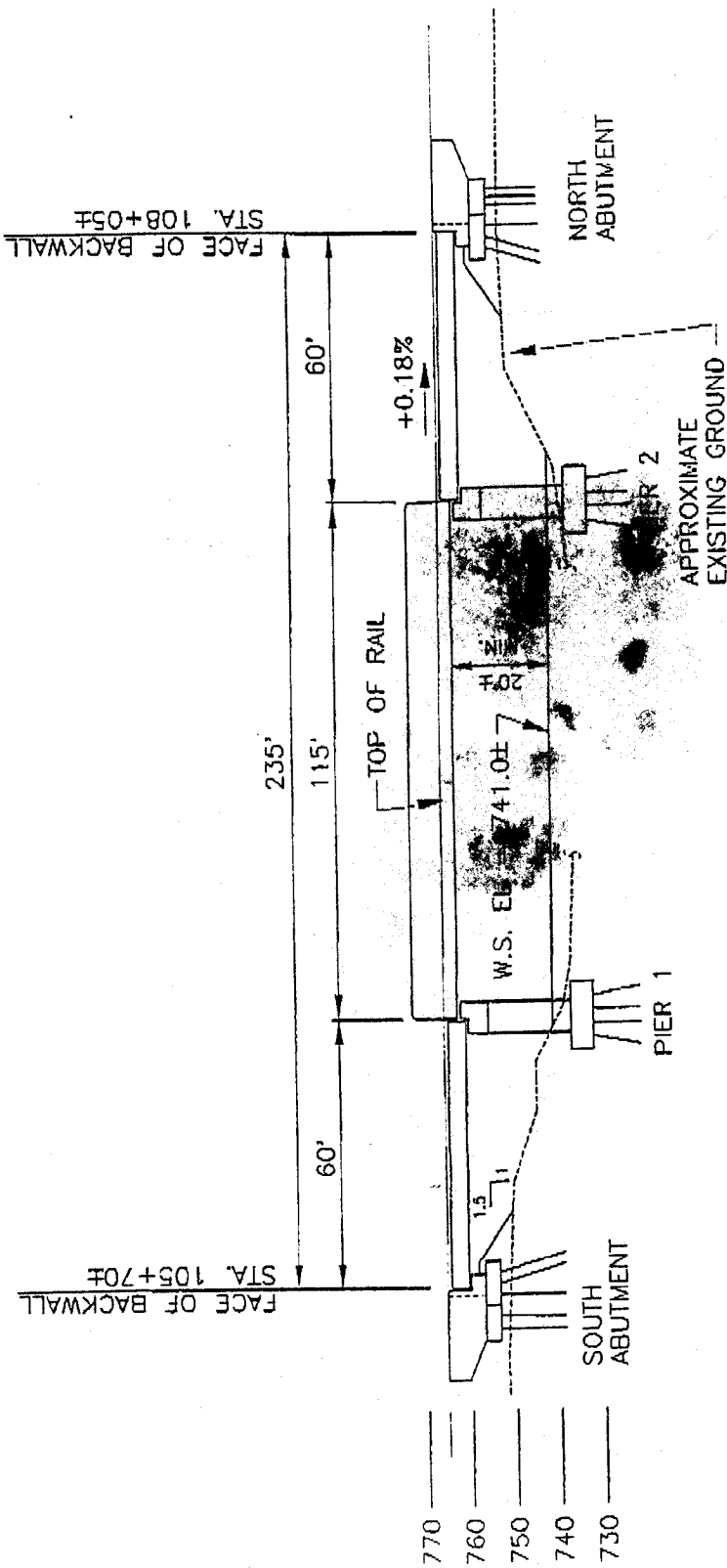
ROANE CO. - PINE RIDGE ROAD

PROJECT NUMBER 73945-2467-04



FROM I-40 TO 34± m SOUTH OF HARRIMAN CITY LIMITS

GENERAL LOCATION MAP



ELEVATION VIEW
BRIDGE NO. 2 OVER BULLARD BRANCH
 N.T.S.



PROP. NO. 9822
 DATE: 11 JULY 1997