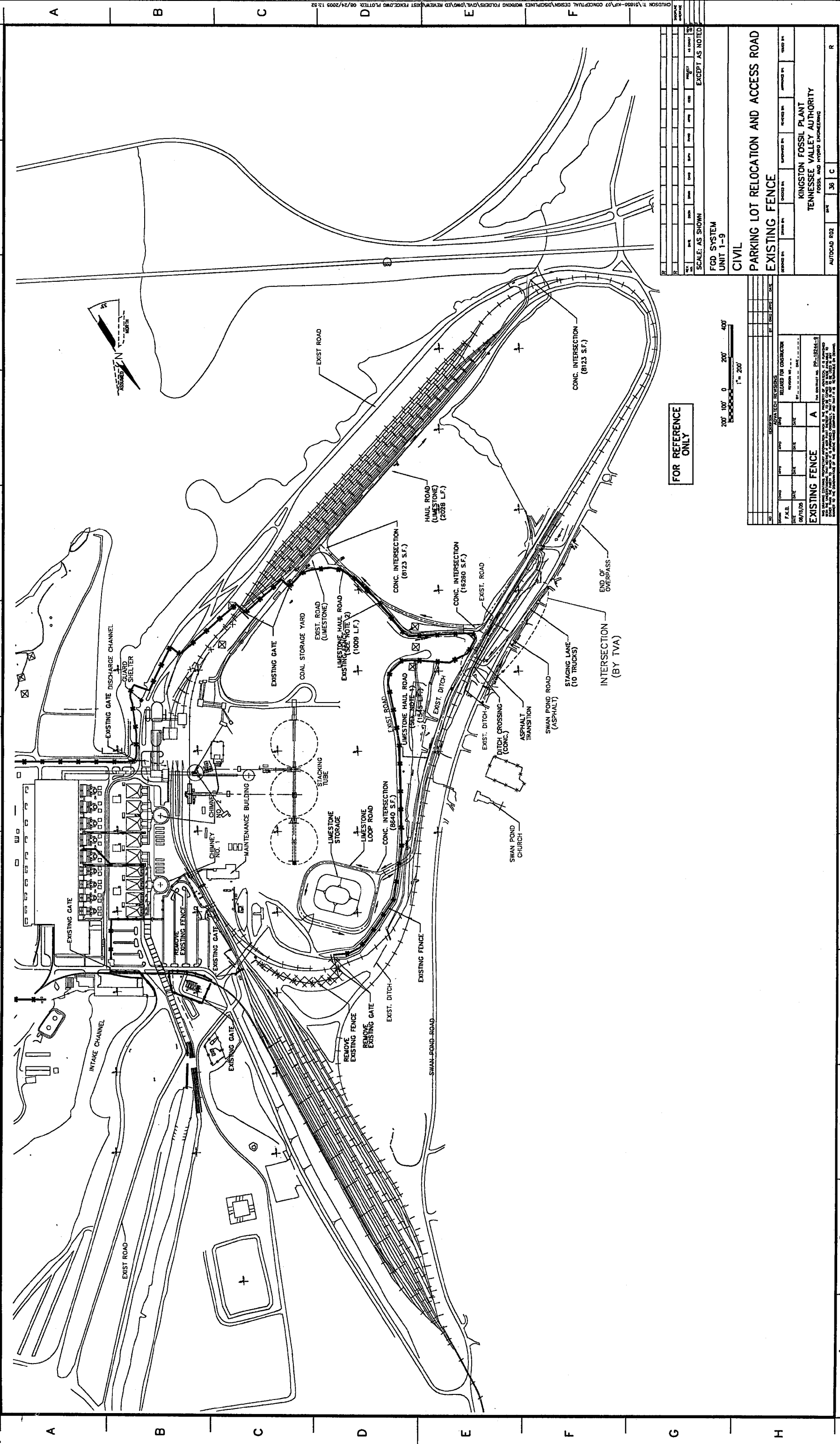


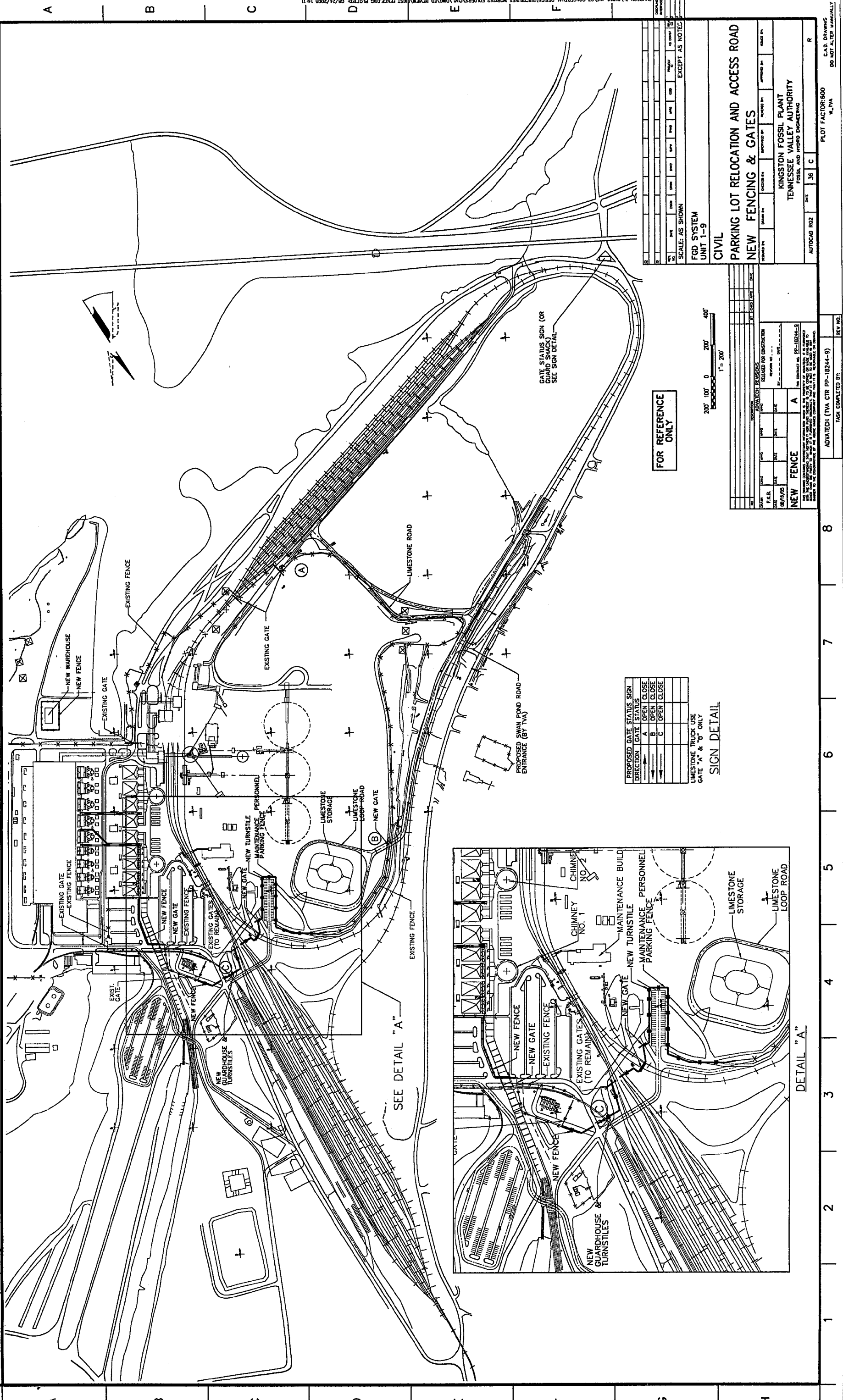
C 95 2 3 4 5 6 7 8 9 10 11 12



SCALE: AS SHOWN											
DATE	BY	CHECKED BY	DATE	BY	CHECKED BY	DATE	BY	CHECKED BY	DATE	BY	CHECKED BY
EXCEPT AS NOTED											
FGD SYSTEM UNIT 1-9											
CIVIL											
PARKING LOT RELOCATION AND ACCESS ROAD EXISTING FENCE											
KINGSTON FOSSIL PLANT TENNESSEE VALLEY AUTHORITY FOSSIL AND HYDRO ENGINEERING											
AUTOCAD R02    04"    36"    C    R											

FOR REFERENCE ONLY			
200' 100' 0' 200' 400'			
1" = 200'			
ADVATECH (VIA CIR PP-18244-9)			
TASK COMPLETED BY: _____			
REV. NO.			
EXISTING FENCE			
A			
TVA CONTRACT NO. PP-18244-9			
THIS DRAWING IS THE PROPERTY OF ADVATECH, INC. AND IS TO BE USED ONLY FOR THE PROJECT AND SITE SPECIFICALLY IDENTIFIED HEREIN. IT IS NOT TO BE REPRODUCED, COPIED, OR TRANSMITTED IN ANY FORM OR BY ANY MEANS, ELECTRONIC OR MECHANICAL, INCLUDING PHOTOCOPYING, RECORDING, OR BY ANY INFORMATION STORAGE AND RETRIEVAL SYSTEM, WITHOUT THE WRITTEN PERMISSION OF ADVATECH, INC.			

C 95 1 2 3 4 5 6 7 8 9 10 11 12

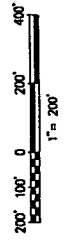


PROPOSED GATE STATUS SIGN

DIRECTION	GATE STATUS
→	A OPEN CLOSE
←	B OPEN CLOSE
→	C OPEN CLOSE

LIMESTONE TRUCK USE  
GATE "A" & "B" ONLY

FOR REFERENCE ONLY



REVISIONS

NO.	DATE	BY	DESCRIPTION
1			ISSUED FOR CONSTRUCTION
2			REVISED
3			REVISED
4			REVISED
5			REVISED
6			REVISED
7			REVISED
8			REVISED
9			REVISED
10			REVISED
11			REVISED
12			REVISED

NEW FENCE A

THIS DOCUMENT IS THE PROPERTY OF ADVANTECH (TVA) AND IS NOT TO BE REPRODUCED OR TRANSMITTED IN ANY FORM OR BY ANY MEANS, ELECTRONIC OR MECHANICAL, INCLUDING PHOTOCOPYING, RECORDING, OR BY ANY INFORMATION STORAGE AND RETRIEVAL SYSTEM, WITHOUT THE WRITTEN PERMISSION OF ADVANTECH (TVA). THIS DOCUMENT IS THE PROPERTY OF ADVANTECH (TVA) AND IS NOT TO BE REPRODUCED OR TRANSMITTED IN ANY FORM OR BY ANY MEANS, ELECTRONIC OR MECHANICAL, INCLUDING PHOTOCOPYING, RECORDING, OR BY ANY INFORMATION STORAGE AND RETRIEVAL SYSTEM, WITHOUT THE WRITTEN PERMISSION OF ADVANTECH (TVA).

SCALE: AS SHOWN

FGD SYSTEM  
UNIT 1-9  
CIVIL

**PARKING LOT RELOCATION AND ACCESS ROAD  
NEW FENCING & GATES**

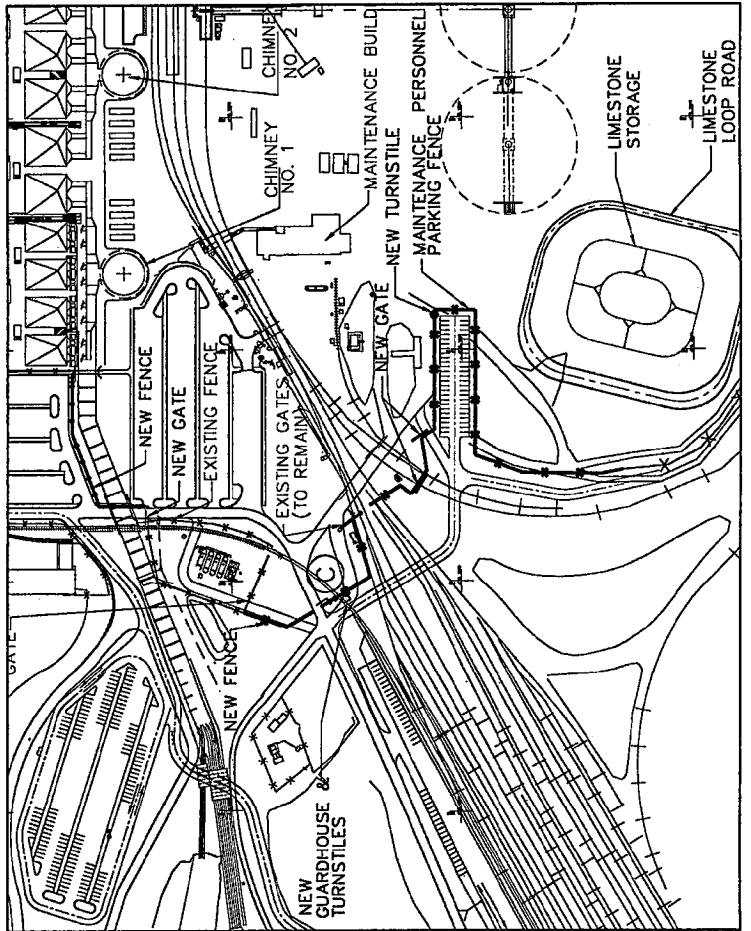
APPROVED BY: \_\_\_\_\_  
 CHECKED BY: \_\_\_\_\_  
 DESIGNED BY: \_\_\_\_\_  
 DRAWN BY: \_\_\_\_\_

KINGSTON FOSSIL PLANT  
TENNESSEE VALLEY AUTHORITY  
FOSSIL AND HYDRO ENGINEERING

AUTOCAD R02 DWG 36 C R

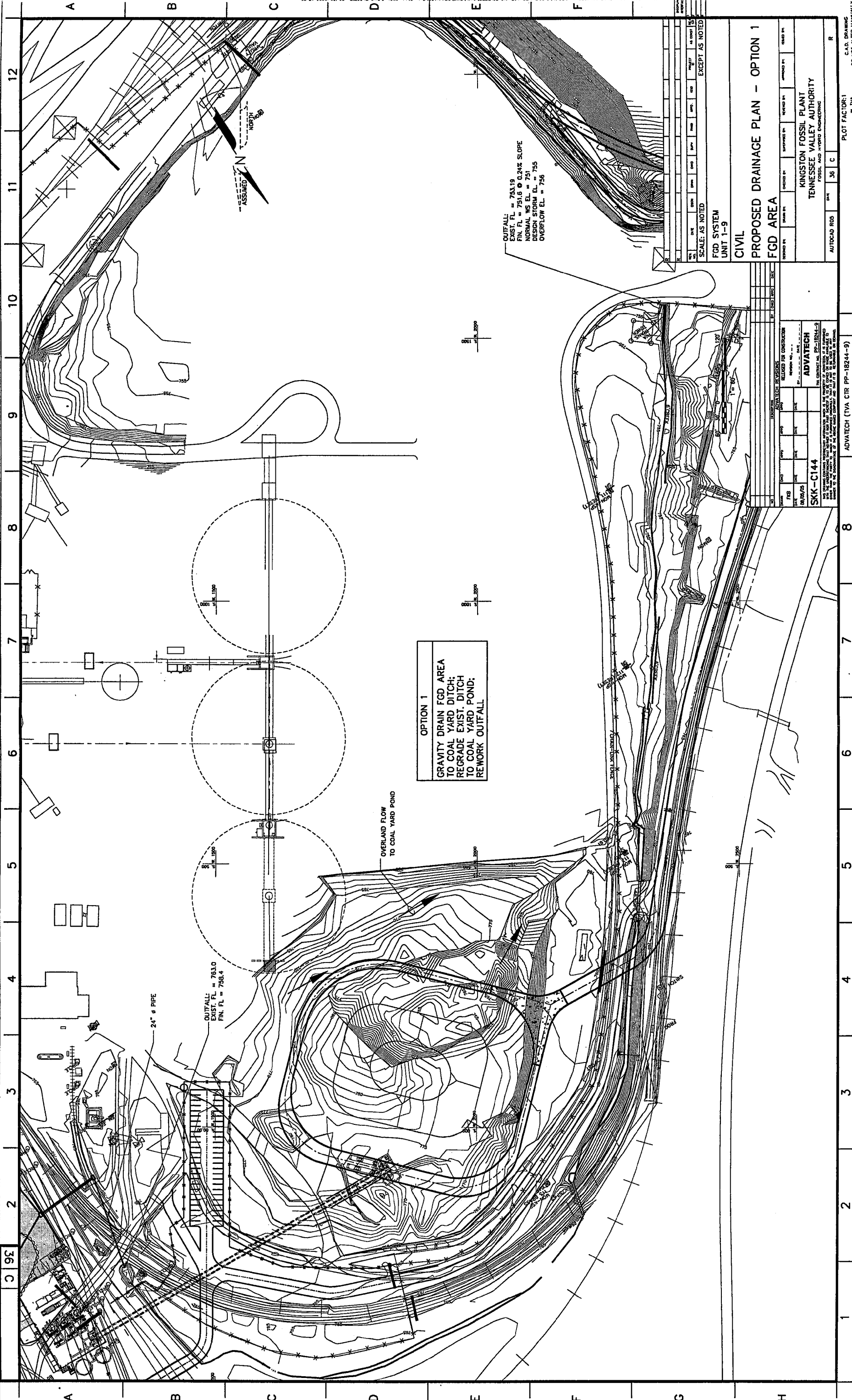
PLOT FACTOR: 600  
M, TVA

E.A.D. DRAWING  
DO NOT ALTER MANUALLY



DETAIL "A"

SEE DETAIL "A"



**OPTION 1**  
 GRAVITY DRAIN FGD AREA  
 TO COAL YARD DITCH;  
 REGRADING EXIST. DITCH  
 TO COAL YARD POND;  
 REWORK OUTFALL

OUTFALL:  
 EXIST. FL = 763.19  
 FIN. FL = 751.6 @ 0.24% SLOPE  
 NORMAL WS EL. = 751  
 DESIGN STORM EL. = 755  
 OVERFLOW EL. = 756

OUTFALL:  
 EXIST. FL = 763.0  
 FIN. FL = 758.4

24" Ø PIPE

OVERLAND FLOW  
 TO COAL YARD POND

NO.	DATE	BY	CHKD.	APP.	DESC.
1					AS NOTED

SCALE: AS NOTED

FGD SYSTEM  
 UNIT 1-9

CIVIL

**PROPOSED DRAINAGE PLAN - OPTION 1**  
**FGD AREA**

DESIGNED BY	CHECKED BY	APPROVED BY	DATE

KINGSTON FOSSIL PLANT  
 TENNESSEE VALLEY AUTHORITY  
 FOSSIL AND HYDRO ENGINEERING

AUTOCAD JOB: SKK-C144

PLOT FACTOR: 1  
 W.TVA  
 DO NOT ALTER MANUALLY

NO.	DATE	BY	CHKD.	APP.	DESC.
1					RELEASED FOR CONSTRUCTION

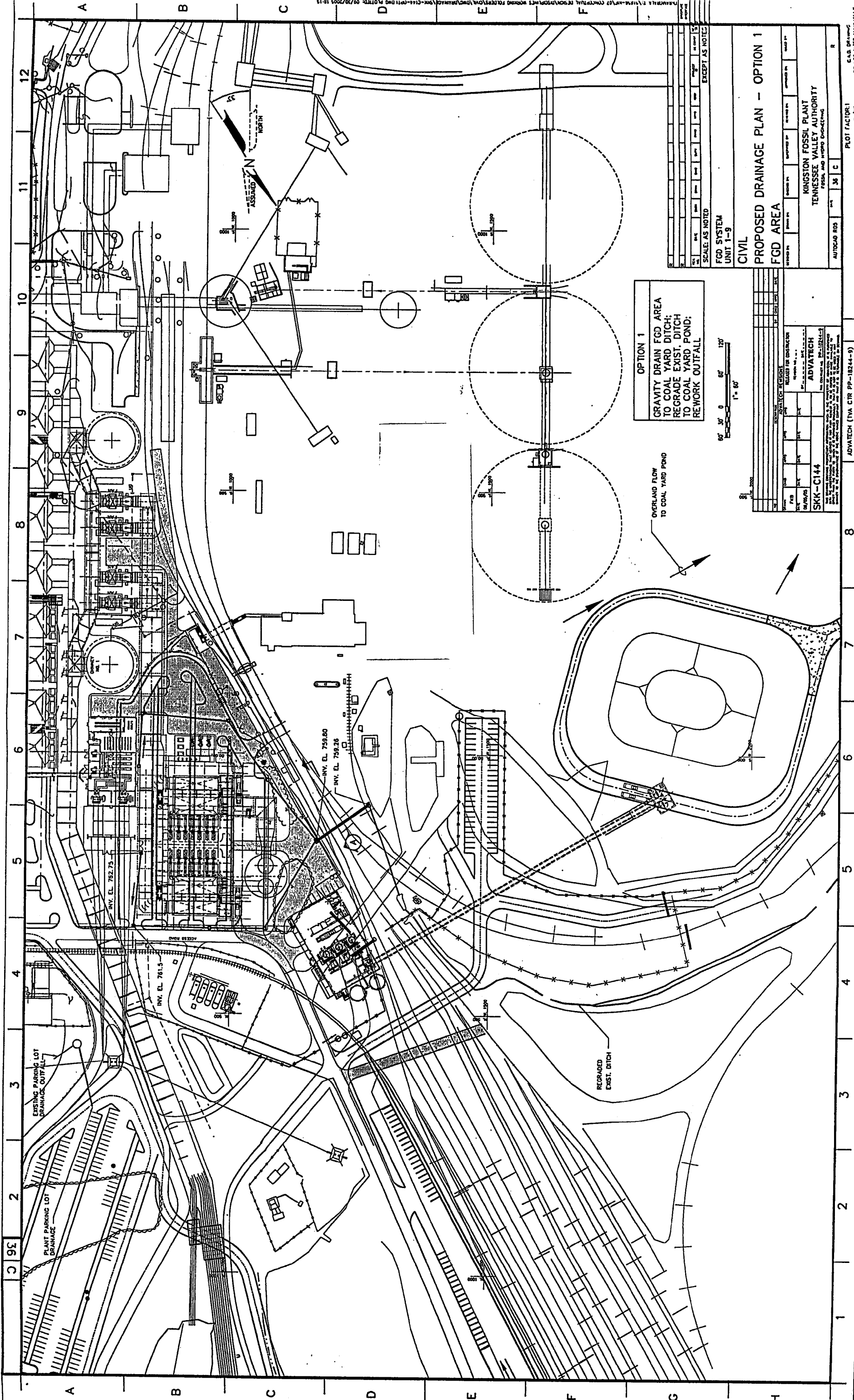
ADVATECH (TVA CTR PP-18244-9)

ADVATECH  
 SSK-C144

THIS CONTRACT NO. PP-18244-9  
 IS THE PROPERTY OF ADVATECH. IT IS TO BE USED ONLY FOR THE PROJECT AND SITE SPECIFICALLY IDENTIFIED IN THE CONTRACT. IT IS NOT TO BE REPRODUCED OR TRANSMITTED IN ANY FORM OR BY ANY MEANS, ELECTRONIC OR MECHANICAL, INCLUDING PHOTOCOPYING, RECORDING, OR BY ANY INFORMATION STORAGE AND RETRIEVAL SYSTEM, WITHOUT THE WRITTEN PERMISSION OF ADVATECH.

TASK COMPLETED BY: \_\_\_\_\_

REV. NO. \_\_\_\_\_



**OPTION 1**  
 GRAVITY DRAIN FGD AREA  
 TO COAL YARD DITCH;  
 REGRADE EXIST. DITCH  
 TO COAL YARD POND;  
 REWORK OUTFALL

OVERLAND FLOW  
 TO COAL YARD POND

REGRADED  
 EXIST. DITCH

60' 30' 0' 60' 120'  
 1" = 60'

NO.	DATE	BY	CHKD.	DESCRIPTION

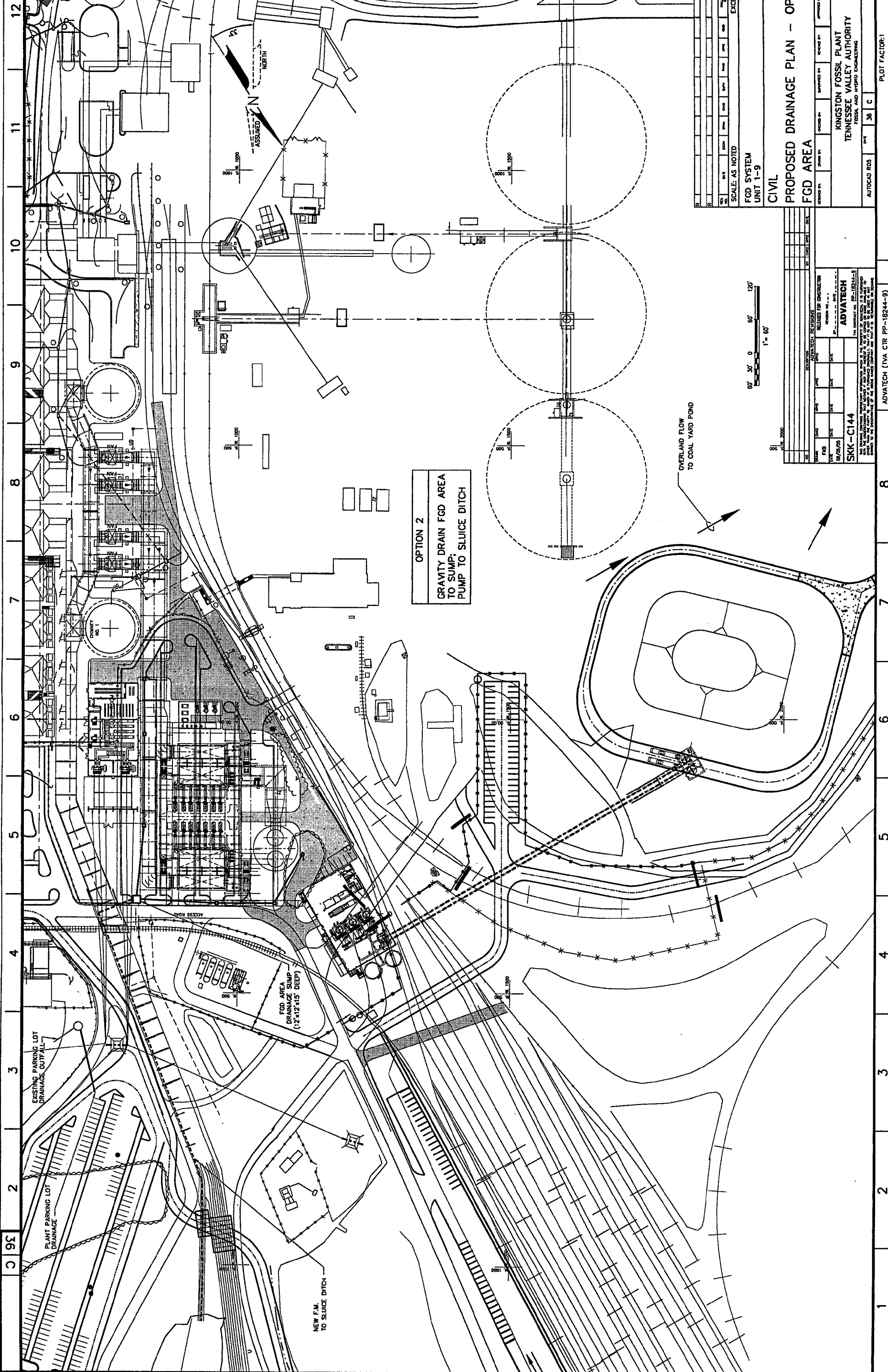
SKK-C144  
 ADVATECH  
 1000 W. 10TH AVENUE, SUITE 100  
 DENVER, CO 80202  
 TEL: 303.733.1234  
 FAX: 303.733.1235

SCALE: AS NOTED  
 EXCEPT AS NOTED  
 FGD SYSTEM  
 UNIT 1-9  
 CIVIL  
**PROPOSED DRAINAGE PLAN - OPTION 1**  
 FGD AREA

KINGSTON FOSSIL PLANT  
 TENNESSEE VALLEY AUTHORITY  
 FGD AREA

DATE	BY	CHKD.	DESCRIPTION

PLOT FACTOR: 0.214  
 C.A.B. DRAWING  
 DO NOT ALTER UNLESS



DATE	BY	CHKD	APP'D	DESCRIPTION

SCALE: AS NOTED  
EXCEPT AS NOTED

FGD SYSTEM  
UNIT 1-9

CIVIL

**PROPOSED DRAINAGE PLAN - OPTION 2  
FGD AREA**

DESIGNED BY: [ ] CHECKED BY: [ ] APPROVED BY: [ ] DRAWN BY: [ ]

KINGSTON FOSSIL PLANT  
TENNESSEE VALLEY AUTHORITY

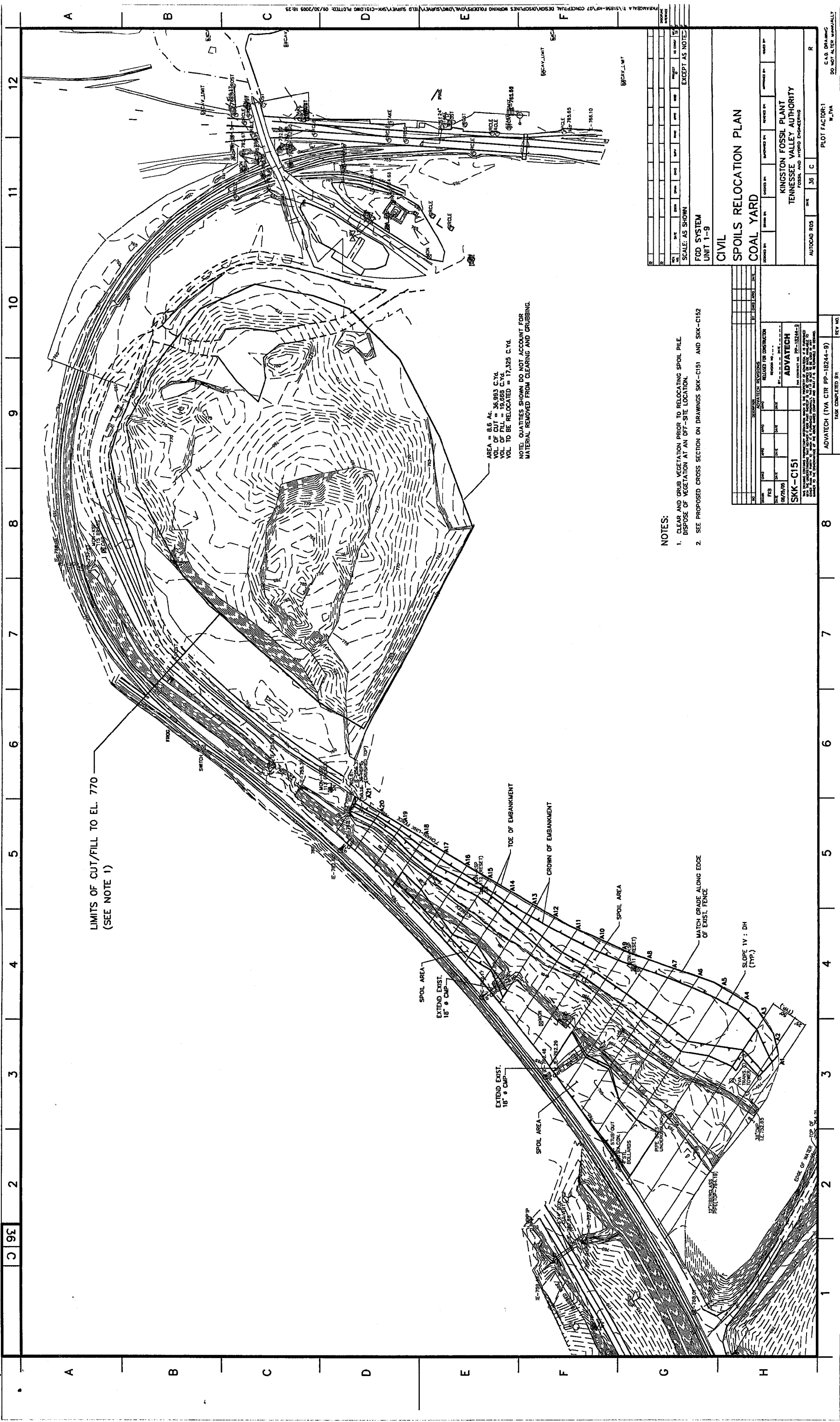
FOSSIL AND HYDRO ENGINEERING

AUTOCAD RGS DATE: 3/6/03

NO.	DATE	BY	DESCRIPTION

ADVATECH (TVA CIR PP-18244-9)  
TASK COMPLETED BY: [ ]

ADVATECH (TVA CIR PP-18244-9)  
TASK COMPLETED BY: [ ]



AREA = 8.6 AC.  
 VOL. OF CUT = 36,993 C.Y.  
 VOL. OF FILL = 19,869 C.Y.  
 VOL. TO BE RELOCATED = 17,325 C.Y.  
 NOTE: QUANTITIES SHOWN DO NOT ACCOUNT FOR MATERIAL REMOVED FROM CLEARING AND GRUBBING.

**NOTES:**

1. CLEAR AND GRUB VEGETATION PRIOR TO RELOCATING SPOIL PILE. DISPOSE OF VEGETATION AT AN OFF-SITE LOCATION.
2. SEE PROPOSED CROSS SECTION ON DRAWINGS SKK-C151 AND SKK-C152

SCALE: AS SHOWN		EXCEPT AS NOTED	
FGD SYSTEM			
UNIT 1-9			
CIVIL			
SPOILS RELOCATION PLAN			
COAL YARD			
DESIGNED BY	CHECKED BY	DATE	REVISED BY
KINGSTON FOSSIL PLANT		TENNESSEE VALLEY AUTHORITY	
FOSSIL AND HYDRO ENGINEERING			
AUTOCAD RDS	DATE	38	C
PLOT FACTOR: 1		R	

NO.	DATE	DESCRIPTION	BY	REV. NO.
1	08/29/06	ISSUE FOR CONSTRUCTION	ADVATECH	1
2	08/29/06	ISSUE FOR CONSTRUCTION	ADVATECH	2

ADVATECH (TVA CR PP-18244-9)  
 TASK COMPLETED BY: \_\_\_\_\_