

PROJECT KINGSTON FOSSIL PLANT

EST. NO. K/F93-1218-PO

DESCRIPTION COAL YARD RAINFALL RUNOFF STUDY

SHEET No. 1 of 6

ACCOUNT NO. 000QWMT

DATE MAY 26, 1994

QUANTITIES BY D. E. BOHL CHECKED BY _____

PRICED BY _____ APPROVED _____

Item / UNID Sys. No.	Description	Quantity	Unit	Rate	Material	Labor	Total Amounts
	DUPLEX PUMPING ASSY PER ATTACHED QUOTE	1	DUPLEX		145009 -		
	LEVEL CONTROL SYSTEM	1	ONLY		3000 -		
	SUMP, POLYETHYLENE PER ATTACHED QUOTE	1	ONLY		18000 -		
	36" POLYETHYLENE SUCTION RING (PREFAB)	1	ONLY		12105 -		

FOR ABUSIVE
APPLICATIONS
EXCLUSIVELY

MADE IN U.S.A.

Nagle Pumps, Inc.

May 23, 1994

Mr. Dan Bohl
Tennessee Valley Authority
1101 Market Street
Chattanooga, TN 37402

Ref: Kingston Fossil Plant/Coal Yard Drainage Sump
Nagle Budget Quote 94-05-026

Dear Dan:

In response to your fax of May 16, enclosed is our budget quote for two (2) Vertical Cantilever sump pumps in a duplex arrangement.

The pumps quoted are 6" Model CWO-E, Frame 143-XZB with 8'6" pump settings and 8'0" tailpipes. The water end wearing parts are CD4MCu with the remaining wetted parts Alloy 20. A deduct for 316 stainless steel remaining wetted parts is included on our proposal note sheet, should you deem 316 stainless steel acceptable. These units are direct driven by 40 hp, 1800 rpm TEFC-XT motors with space heaters.

With regard to the alternate you requested, if you look at the performance curve included with this proposal, you will note that the same pump will produce 1700 gpm at 58' TDH - only 100 gpm less than you indicated. We would need to go to a different selection to get the 1800 gpm at 58' TDH. At any rate, I thought you might want to consider this first. It would only require going to a 50 hp motor instead of a 40 hp, so I've included an adder on our proposal notes for the 50 hp motor.

Please review our quotation and, should you have any questions or need any further information, please don't hesitate to contact us or our representative, Gerrard and Associates.

Very truly yours,
NAGLE PUMPS, INC.


Marge M. Yacono
Applications Engineer

MMY:ps

Enclosure

cc: Gerrard & Associates, Inc.
P.O. Box 6231
Charlotte, NC 28207
704-338-1991



Nagle Pumps, Inc.

1249 CENTER AVE., CHICAGO HEIGHTS, IL 60411
312-754-2940 FAX: 312-754-2944

QUOTATION

To Tennessee Valley Authority
1101 Market Street
Chattanooga, TN 37402

Date May 23, 1994
File 94-05-026
Inv No

Attn Dan Bohl
For TVA

Plant Ki

Ph

OPERATING COND

3.2 - 3.6

Application Coal Yard Drainage Pond Liquid
Sp Gr 1.01 Temp A °F Visc. Solids Conc
GPM 1500 TDH 65 Setti

PUMP DESCRI

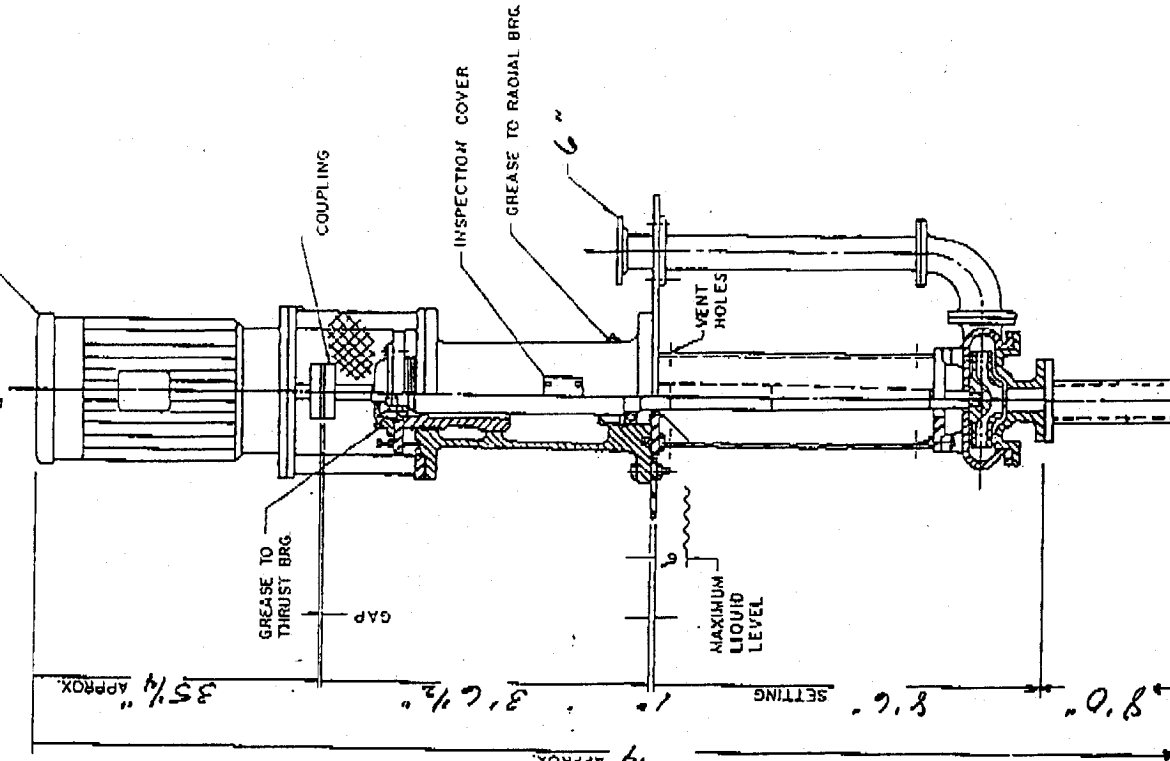
Pump Disch 6 " Type Vert. Cantilever Model C 43
Min Sump Opening 30 "x 44 " Mtg Pit Size 36 "x 50 " (Epoxy Coated)
Pump RPM 1193 Drive Method Direct Net BHP 38.9
Mat'l Of Construction: Water End CD4MCu
Alt. <3300' Rem Wetted Parts Alloy 20
Imp Dia Used 14.3 Max Dia Avail 14.3 No Of Vanes 5 Class E Port Width 1.13

DRIVE DESCRIPTION

Motor HP 40 RPM 1200 PH 3 HZ 60 V 460 Frame 364-HP Encl TEFC-XT w/Heater
Coupling Falk 1070-T-10 C.D. 1.15 S.F.

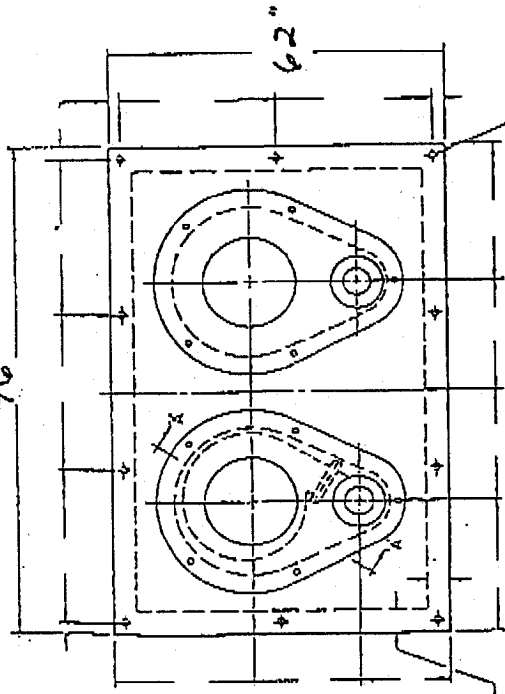
		Drive	
	WT	PRICE	
Bare Pump	6672	129,144	
Base/Overhead Mount			
Coupling/Drive	46	448	
Guard			
Motor	2160	5,980	
Motor Mounting			
Main Sump Cover	2498	4,922	
Control Panel	100	4,515	
Crating/Skidding	1144		
Total Ea Unit			
Total for 1 Units Duplex	12,620	145,009	

40 HP 1200 RPM, 3 PH, 60 HZ, 460 VOLTS
FRAME 364 HP T.E.P.C. VERTICAL MOTOR
K7



PROP. NO. 94-05-026
 PAGE NO. 181
 DATE 5-23-94
 Nagle Pumps, Inc.
 CHICAGO HEIGHTS, ILL.

OUTLINE DRAWING
 6" CW10-E 143-X20



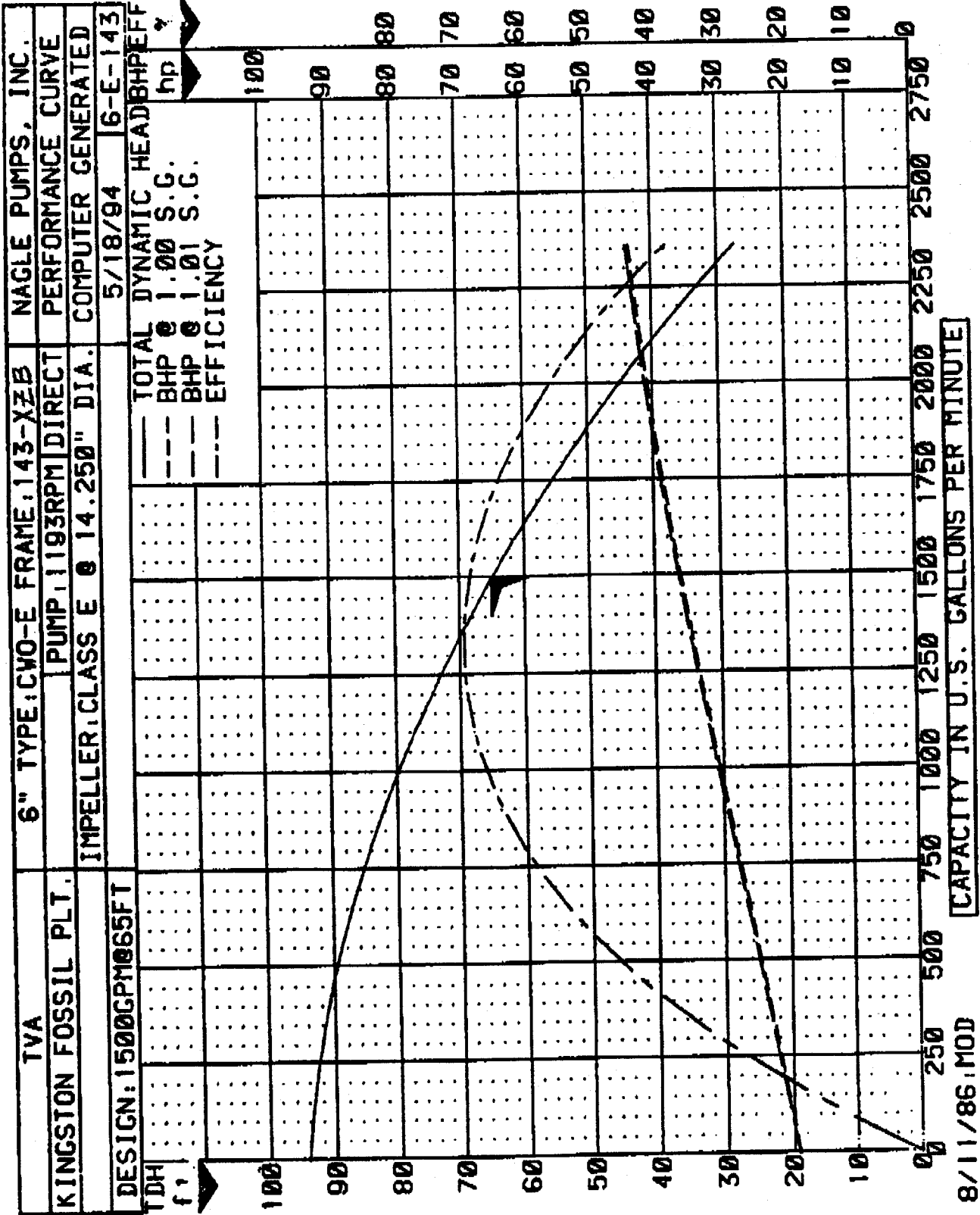
101 DIA. HOLES
FOR DIA. BOLTS

- SEE NOTE 2

NOTES

1. THE DOTTED LINE INLAND PARALLEL TO THE PLATE EDGE IS THE REQUIRED PLATE EDGE DIMENSION. THE CUSTOMER IS EXPECTED TO PROVIDE CONTINUOUS SUPPORT UNDER THE ENTIRE MOUNTING PLATE PERIMETER AS SHOWN AND TO SHIM, LEVEL AND ANCHOR THE EQUIPMENT IN ACCORDANCE WITH GOOD MOUNTING PRACTICES.

PRELIMINARY DRAWING
 NOT TO BE USED FOR
 CONSTRUCTION PURPOSES



PLASTICO

QUOTATION

32 Flicker St., P.O. Box 12183
 Memphis, TN 38182-0183
 Phone 901/452-6527 FAX 901/452-6520

Quotation Number: V05194-1
 Quotation Date: May 20, 1994

To: Tennessee Valley Authority
 Mechanical Engineering, Fossil Division
 1101 Market Street
 Chattanooga, TN 37402
 Attn: Mr. Dan Bohl
 PH# 615-751-75558

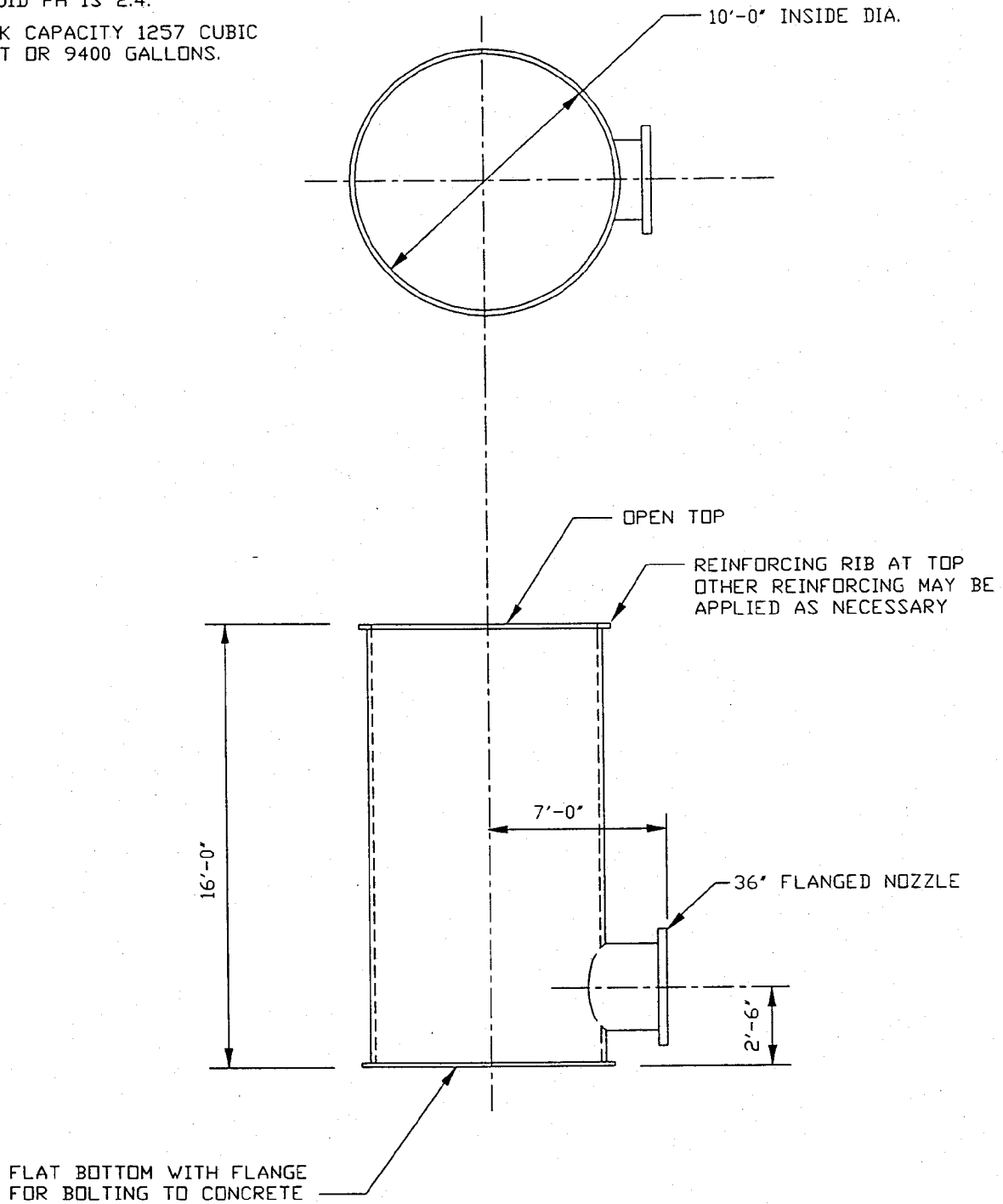
Accepted By: _____
 Date: _____

Salesman: _____

Delivery	Reference	F.O.B. Point	Terms	
6-7 Wks.	10' Dia. x 16' Tall; Black PPL Sump	Our Dock	Net 30 Days	
Quantity	Description	Unit Cost	Ext. Amount	
One	<p>Black Polypropylene Sump measuring 10' dia. x 16' tall with 3/4" Thk. materials throughout its construction.</p> <p>This sump will be fabricated to the dimensions provided on customer's Drawing Labeled Kingston Fossil Plant. Tank will be constructed from sheets thermoformed to the appropriate radius and then butt-welded together to form the 48" tall sections that comprise the body.</p> <p>The horizontal seams will all be done with an extrusion welder and then reinforced with 2" wide lap plates, extrusion welded into place. The 36" Flanged nozzle will constructed from sheet 3/4" Thk. thermoformed to the appropriate dia. and then butt-welded to form one thermally fused pipe. The flange will be drilled to ANSI Standards and constructed from 2" Thk. material.</p>		Crating	18,000.00
Quoted By:	<p><i>Alvin A. Notowich</i></p> <p>Alvin A. Notowich, V.P.</p>			
<p><i>We appreciate your business!</i></p>			<p><i>Please See Terms & Conditions Attached</i></p>	
			Total	18,000.00

NOTES:

1. TANK TO BE USED AS A PUMP BASIN LINER AND WILL BE ENCASED IN CONCRETE.
2. LIQUID PH IS 2.4.
3. TANK CAPACITY 1257 CUBIC FEET OR 9400 GALLONS.



KINGSTON FOSSIL PLANT

COAL YARD DRAINAGE SUMP

FILE: KCOALYD2

QUOTATION

Date May 23, 1994



IRRIGATION SUPPLY CO., INC

926 BAXTER AVENUE • BOX 4545 • LOUISVILLE, KY • 40204 • 502 583-6591

052394-1160

TO:

Tennessee Valley Authority

1101 Market Street

Chattanooga, Tennessee 37402-2801

FOR Coal Yard Drainage Sump

Kingston Fossil Plant

QUOTATION NO.

BID DUE

SALESMAN Jimmie T. Douglas

F.O.B. Jobsite

DELIVERY 6-12 weeks ARO

TERMS Net 30 days

ITEM	QUANTITY	SIZE	DESCRIPTION	PRICE	UNIT	TOTAL
1	1	36"	SDR 19.0 Driscopipe 1000, Cell Classification per ASTM D-3350 of 345434C, shop fabricated into one piece per dimensions as shown on TVA drawing-----	-----	----\$	12,105.00

"This quotation expires within 30 days from date hereon and in the meantime is subject to changes upon notice and shall not bind or be valid against the company until accepted by an officer of the company."

Sub Total	\$12,105.00
Sales Tax	-----
Total	-----

ACCEPTED

BY: _____
DATE: _____

IRRIGATION SUPPLY CO., INC
By *Jimmie T. Douglas*
Jimmie T. Douglas

SEE LIMITATION OF WARRANTY ON REVERSE SIDE

- POLYETHYLENE PIPE FITTINGS & FABRICATIONS
- GEOTEXTILE FABRICS
- UTILITY & INDUSTRIAL
- IRRIGATION SUPPLIES

EST. NO. K/F93-1218-PO

SHEET No. 2 of 6

DATE MAY 26, 1994

PROJECT KINGSTON FOSSIL PLANT

DESCRIPTION COAL YARD RAINFALL RUNOFF STUDY

ACCOUNT NO. 000QWMT

QUANTITIES BY D. E. BOHL CHECKED BY _____

PRICED BY _____ APPROVED _____

Item / UNID Sys. No.	Description	Quantity	Unit	Rate	Material	Labor	Total Amounts
	POLYETHYLENE PIPE 10" NOMINAL SIZE, SDR 19, DRISCOPE SERIES 1000 OR EQUAL	8400	ft				
	POLYETHYLENE FITTINGS MADE FROM 10" PIPE, SDR 19, 90° EL 10"	4	EA				
	45° EL 10"	10	EA				
	FLANGE, STUB TYPE WITH BACKING RING TO WELD TO ABOVE PIPE 10"	2	EA				

PROJECT KINGSTON FOSSIL PLANT

EST. NO. KIF93-1218-PO

DESCRIPTION COAL YARD RAINFALL RUNOFF STUDY

SHEET No. 3 of 6

ACCOUNT NO. 000QWMT

DATE MAY 26, 1994

QUANTITIES BY D. E. BOHL

PRICED BY _____ APPROVED _____

CHECKED BY _____

Item / UNID Sys. No.	Description	Quantity	Unit	Rate	Material	Labor	Total Amounts
	FLANGE, STAINLESS STEEL, FORGED, ASTM A182, TYPE 316, 150 #						
	10"	2	EA				
	6"	2	EA				
	FITTINGS, STAINLESS STEEL, FORGED, ASTM A 403, TYPE 316, BUTT WELD, SCHEDULE 40						
	90° ELBOW 6"	2	EA				
	45° ELBOW 10"	4	EA				
	REDUCER, ECCENTRIC 10" x 6"	2	EA				

PROJECT KINGSTON FOSSIL PLANT

EST. NO. K/F93-1218-PO

DESCRIPTION COAL YARD RAINFALL RUNOFF STUDY

SHEET No. 4 of 6

ACCOUNT NO. 000QWMT

DATE MAY 26, 1994

QUANTITIES BY D. E. BOHL

PRICED BY _____ APPROVED _____

Item / UNID / Sys. No.	Description	Quantity	Unit	Rate	Material	Labor	Total Amounts
	PIPE, STAINLESS STEEL, ASTM A 312 GRADE 316, SEAMLESS, SCHED 40						
	10"	20	FT				
	1"	20	FT				
	FITTINGS, FORGED, SOCKET WELD. ASTM A182, TYPE 316, CLASS 2000 OR 3000						
	SOCKET						
	10" RUN x 1" OUTLET	2	EA				
	90° ELBOW						
	1"	4	EA				
	THRODLET						
	10" RUN x 1/2" OUTLET	2	EA				
	PLUG, HEX HEAD OR SQUARE HEAD 1/2"	2	EA				

PROJECT KINGSTON FOSSIL PLANT

EST. NO. K/F93-1218-PO

DESCRIPTION COAL YARD RAINFALL RUNOFF STUDY

SHEET No. 5 of 6

ACCOUNT NO. 000QWMT

DATE MAY 26, 1994

QUANTITIES BY D. E. BOHL CHECKED BY _____

PRICED BY _____ APPROVED _____

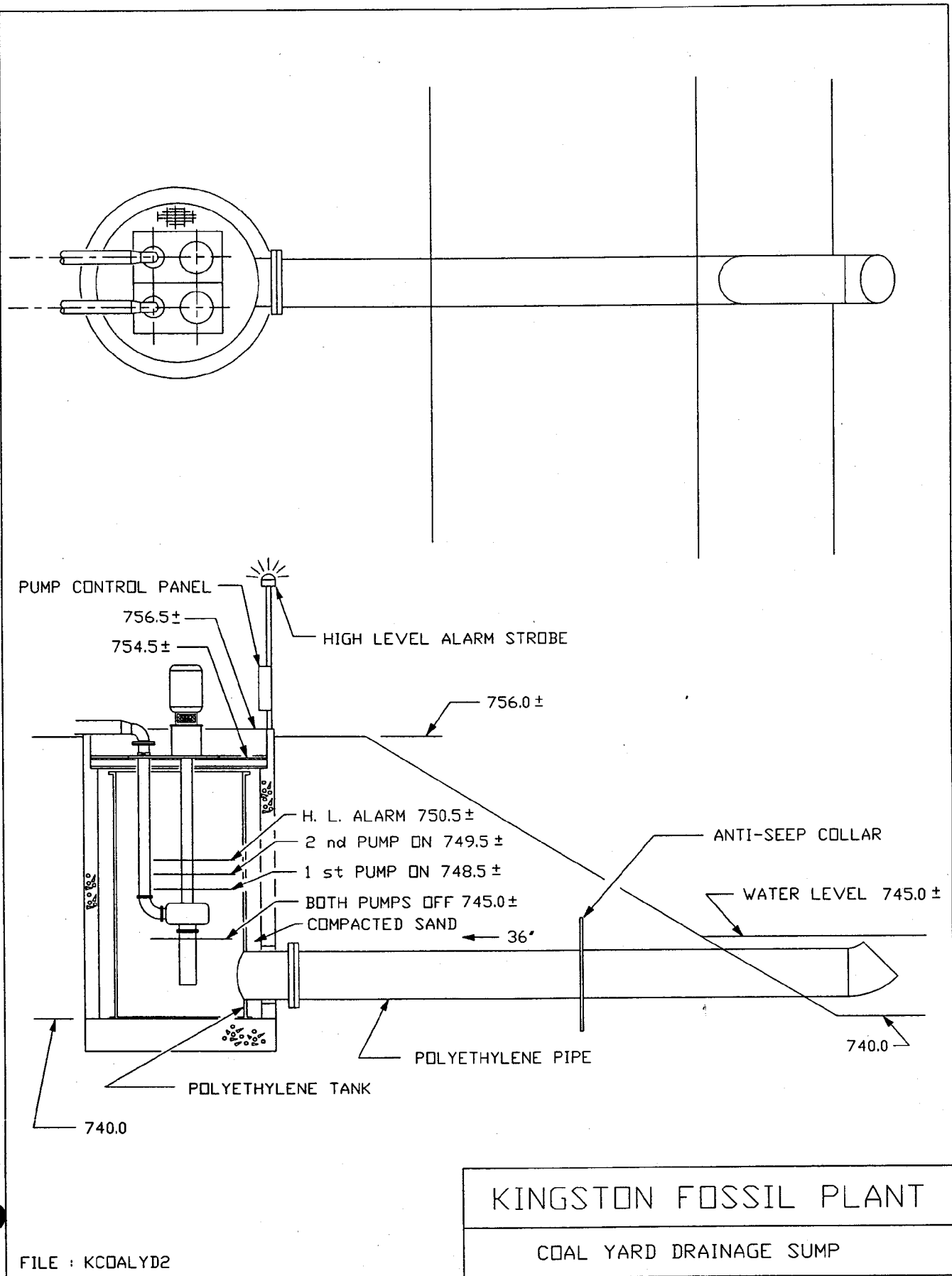
Item / UNID / Sys. No.	Description	Quantity	Unit	Rate	Material	Labor	Total Amounts
	VALVE, CHECK, STAINLESS STEEL 150 #, FLANGED.	2	EA				
	10"						
	VALVE, GATE BALL, THREADED, 316 STAINLESS STEEL, TEFLON SEALS	2	EA				
	1"						
	VALVE BOX, PLASTIC, RECTANGULAR, 20" LONG x 14" WIDE WITH HEIGHT EXTENSIONS. AMETEK JUMBO BOX OR EQUAL	2	EA				
	VALVE BOX, FOR 1" VALVE, 2 1/2" DEEP.	2	EA				

FOSSIL ENGINEERING

MECHANICAL AUXILIARIES ENGINEERING SECTION

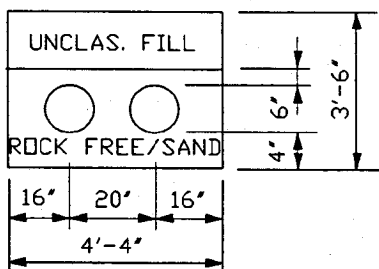
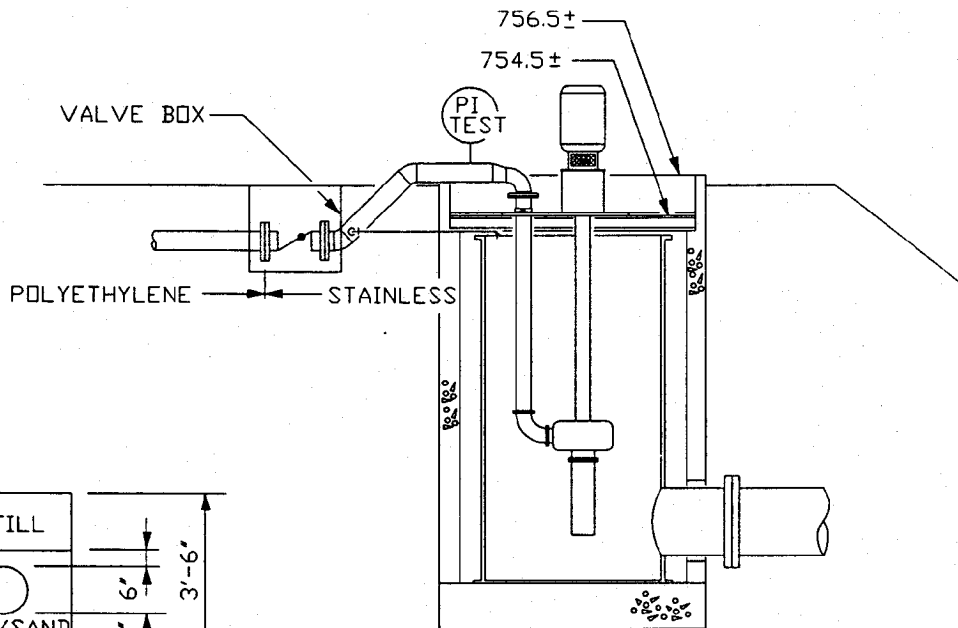
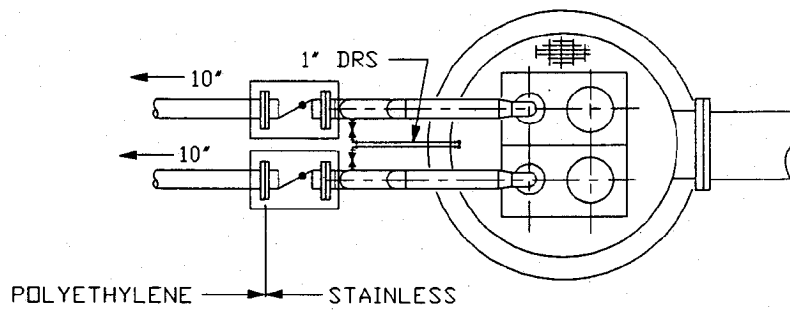
PROJECT KINGSTON FOSSIL PLANT EST. NO. K/F93-1218-PO
DESCRIPTION COAL YARD RAINFALL RUNOFF STUDY SHEET No. 6 of 6
ACCOUNT NO. 000QWMT DATE MAY 26, 1994
QUANTITIES BY D. E. BOHL CHECKED BY _____ PRICED BY _____ APPROVED _____

Item / UNID Sys. No.	Description	Quantity	Unit	Rate	Material	Labor	Total Amounts
	PIPE SLEEVES, ASTM A53, SHEED 40, CARBON STEEL, EPOXY COATED						
	12"	200	FT				
	MISC, BOLTS, WASHERS, GASKETS	1	LOT		500		



KINGSTON FOSSIL PLANT COAL YARD DRAINAGE SUMP
--

FILE : KCOALYD2



TRENCH DETAIL

KINGSTON FOSSIL PLANT

COAL YARD DRAINAGE SUMP

FILE : KCDALYD3

