

EARLY START	EARLY FINISH	ORIG DUR	BUDGET QUAN.
16SEP94		0	0
30CT94	22DEC94	56	180
30CT94	22DEC94	56	240
30CT94	22DEC94	56	120
	22DEC94	0	0
	30DEC94	0	0

KIF COAL YARD RUNOFF POND  
Phase 2

PHASE 2 PAB APPROVAL  
 PERFORM PHASE 2 MECH AUX DESIGN  
 PERFORM PHASE 2 SITE DESIGN  
 PERFORM PHASE 2 ELECT SUPPORT DESIGN  
 PDL ISSUED  
 PHASE 2 COMPLETION

SEP	OCT	NOV	DEC	1995 JAN
-----	-----	-----	-----	-------------

Plot Date 9AUG94	Activity Bar/Early Dates	EFOS K009 PRELIMINARY SCHEDULE Engineering Services Fossil Projects Current Schedule - Prel Kdr	Sheet 1 of 1 EFOS - FOSSIL PROJECTS [ BC-92 ]
Data Date 1AUG94	Critical Activity		
Project Start 22JAN93	Milestone/Flag Activity		
Project Finish 15MAR95			
(c) Primavera Systems, Inc.		Date Revision Checked/Approved	

ATTACHMENT 1

KINGSTON COAL YARD RAINFALL RUNOFF STUDY  
BASIS FOR PUMPING CAPACITY NEEDED TO PREVENT POND OVERFLOW

	VOLUME & DURATION TO PUMP SAID VOLUME	
	<u>(CU FT)</u>	<u>(DAYS)</u>
POND STORAGE (1ST PUMP START TO OVERFLOW)	1,733,200	
PUMPS OPERATING		
1,200 GPM PUMPS		
ONE PUMP, ONE LINE		7.5
TWO PUMPS, ONE LINE		6.3
TWO PUMPS, TWO LINES		3.8
1,500 GPM PUMPS		
ONE PUMP, ONE LINE		6.0
TWO PUMPS, ONE LINE		5.0
TWO PUMPS, TWO LINES		3.0
10-YEAR 24-HOUR RAINFALL EVENT	1,680,700	
1,200 GPM PUMPS		
ONE PUMP, ONE LINE		7.3
TWO PUMPS, ONE LINE		6.1
TWO PUMPS, TWO LINES		3.6
1,500 GPM PUMPS		
ONE PUMP, ONE LINE		5.8
TWO PUMPS, ONE LINE		4.9
TWO PUMPS, TWO LINES		2.9
24-HOUR PUMPING		
1,200 GPM PUMPS		
ONE PUMP, ONE LINE	231,000	1.0
TWO PUMPS, ONE LINE	277,200	1.0
TWO PUMPS, TWO LINES	462,000	1.0
1,500 GPM PUMPS		
ONE PUMP, ONE LINE	288,700	1.0
TWO PUMPS, ONE LINE	346,500	1.0
TWO PUMPS, TWO LINES	577,500	1.0
	FROM WATER TOP TO OVERFLOW ELEVATION	
	<u>(CU FT)</u>	<u>(INCHES)</u>
<del>ONE</del> RESERVE DURING FEB 1994 EVENT*		
PUMPS OPERATING		
NONE	(602,200)	(9)
1,200 GPM PUMPS		
ONE PUMP, ONE LINE	115,400	1
TWO PUMPS, ONE LINE	369,500	6
TWO PUMPS, TWO LINES	923,900	20
1,500 GPM PUMPS		
ONE PUMP, ONE LINE	404,100	7
TWO PUMPS, ONE LINE	577,400	11
TWO PUMPS, TWO LINES	1,113,200	27

dws

07/29/94

KINGSTON COAL YARD RAINFALL RUNOFF STUDY  
SIGNIFICANT RAINFALL EVENTS BETWEEN 5-1-91 & 5-31-94

INTERVAL*	----- TOTAL -----		----- PEAK -----	
	RAINFALL (INCHES)	INTERVAL (DAYS)	RAINFALL (INCHES)	INTERVAL (DAYS)
03/23-27/93	5.73	5.0	4.09	1.25
12/04-10/93	6.03	7.0	4.72	1.25
02/09-11/94	6.27	3.0	3.00	0.25
03/27-31/94	6.18	5.0	4.78	1.00
04/12-16/94	4.58	4.5	2.41	0.25

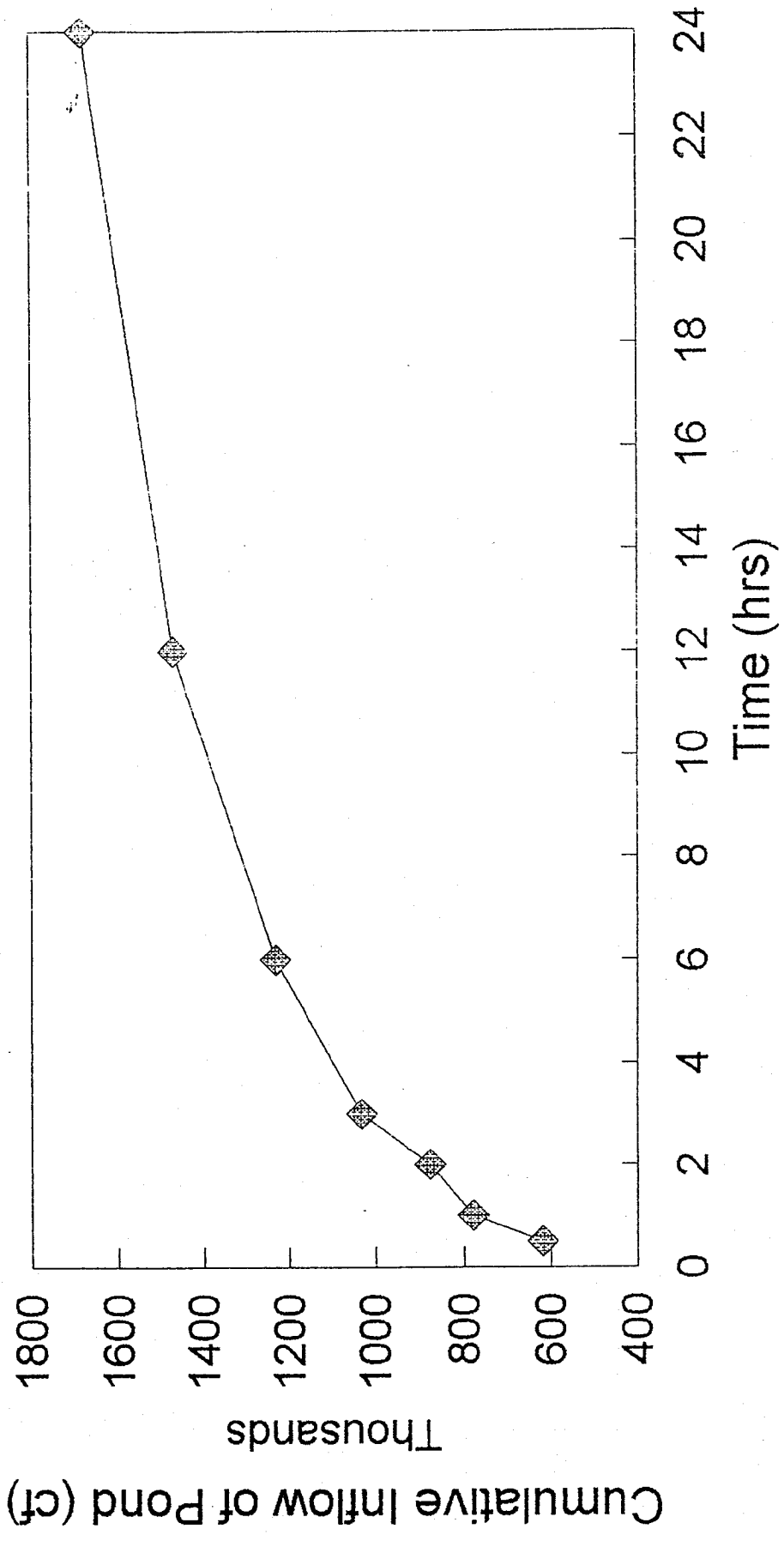
\* Five significant rainfall events occurred during the period of 5-1-91 through 5-31-94. With no pumps operating, the pond would have overflowed during each period except that of 4/12-16/94. It would not have overflowed during any event if at least one pump had been operating. The most significant event occurred in February 1994 when more than 602,000 cubic feet of water would have overflowed if no pumps had operated.

07/29/94

*Assuming pond is pumped down  
to pump start elevation 798.5*

# KINGSTON FOSSIL PLANT

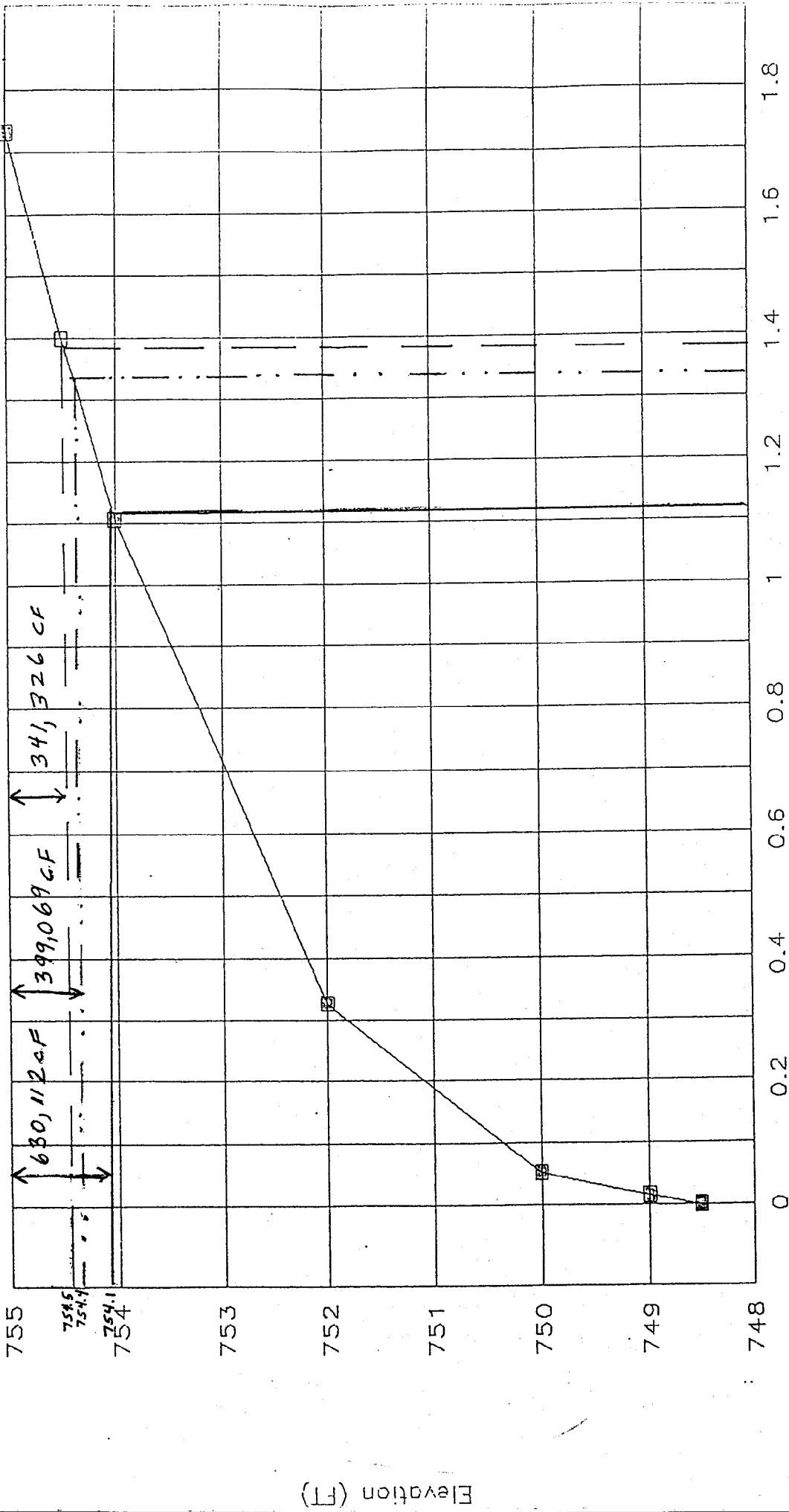
## COAL YARD RUNOFF POND



◆ 10 YR STORM DATA INFLOW

# KINGSTON FOSSIL PLANT

## COAL YARD RUNOFF POND



STORAGE AVAILABLE  
AT END OF 10 YR-24 HR  
STORM WITH

— 2 1500 gpm —••— 2 1500 - 2 LINES (120% EFF)

— 1 1500 gpm

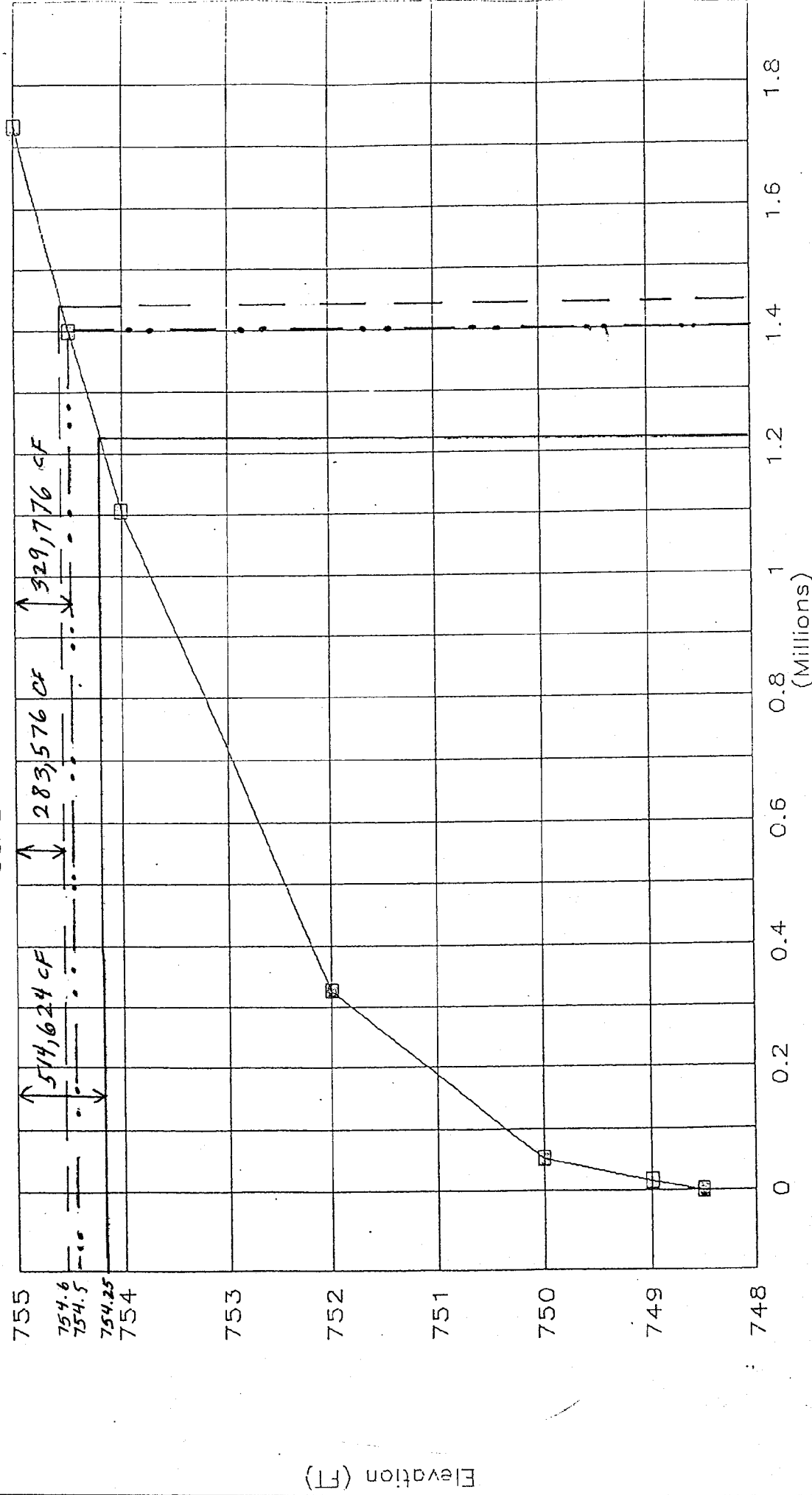
■ Cumulative Volume

Volume for Storage (CF)

(Millions)

# KINGSTON FOSSIL PLANT

## COAL YARD RUNOFF POND



STORAGE AVAILABLE  
AT END OF 10YR-24 HR  
STORM WITH

——— 2 1200 gpm  
 - - - - 1 1200 gpm  
 ····· 1 1700-2111111 (120% EFF)

Volume for Storage (CF)

□ Cumulative Volume

Elevation (FT)



IV. Bill of Material

<u>Item</u>	<u>Qty.</u>	<u>Unit</u>	<u>Description</u>
1	1	EA	Outdoor Luminaire, Holophane Type PETL-100MV-12-545-ST.
2	12	FT	Conduit, 1-1/2", Iron.
3	80	FT	Conduit, 1", Iron.
4	10	FT	Conduit, 1", Flex.
5	5	FT	Conduit, 3/4", Flex.
6	30	FT	Conduit, 3/4", Iron.
7	30	FT	Conduit, 2", Iron.
8	5	FT	Conduit, 2", Flex.
9	100	FT	Cable, 3/C #10, 90°C, 600V, EPR/Hypalon Jacket.
10	40	FT	Cable, 4/C #12, 90°C, 600V, EPR/Hypalon Jacket.
11	120	FT	Cable, 1/C #2/0, 90°C, 600V, EPR/Hypalon Jacket.
12	50	FT	Ground Cable, 2 AWG, Bare Copper.
13	1	EA	120V GFI Receptacle, Duplex, 20A, Brown, Hubbell Catalog # GF-5362.
14	1	EA	120V GFI Receptacle Cover, Weatherproof, Crouse-Hinds Catalog # WLGf-FS.
15	1	EA	Safety Switch, 3 Wire, 60A, 600V, Square D Type H362RB.

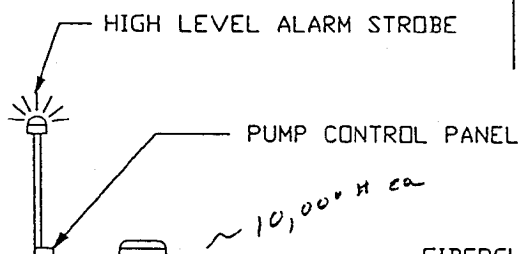
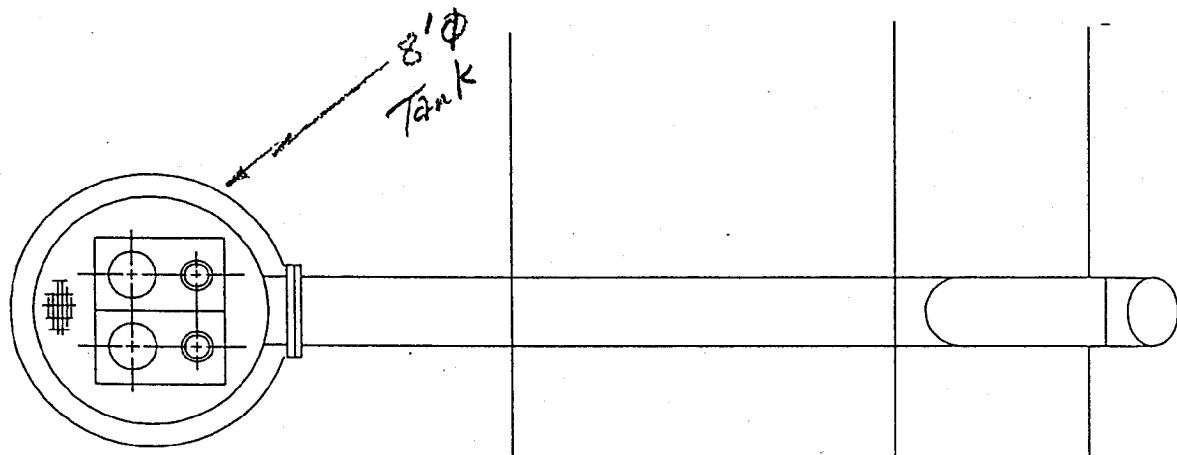
V. Electrical Scope for Phase III

- A. Field support during construction and start-up.
- B. Incorporation of electrical as-builts into the TVA drawing system.

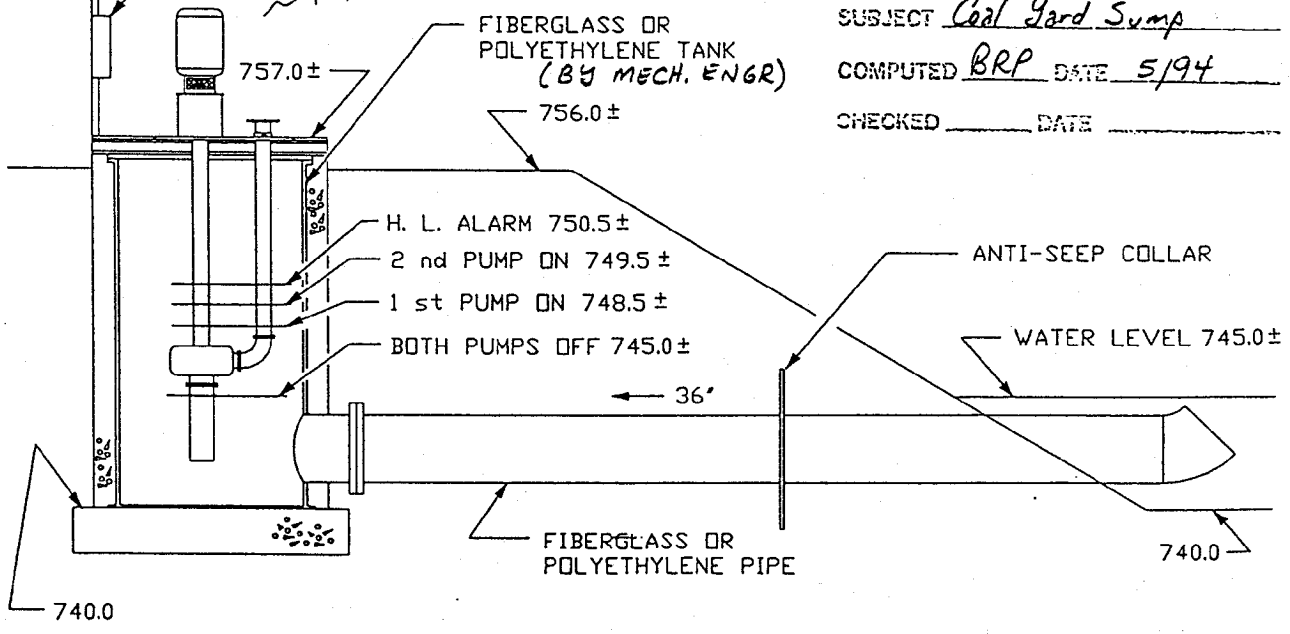


PROJECT Kingston Steam Plant ESTIMATE NO. K/F93-1218-PO  
 DESCRIPTION Coal Yard Sump SHEET No. I of 5  
 ACCOUNT NO. 000 R394 DATE 5/94  
 QUANTITIES BY Bryan R. Partin CHECKED BY \_\_\_\_\_ APPROVED \_\_\_\_\_  
 PRICED BY \_\_\_\_\_

Item / UNID / Sys. No.	Description	Quantity	Unit	Rate	Material	Labor	Total Amounts
#1	ASTM A36 steel - W14X26 Beams	0.75	TONS				
#2	1 1/2" x 3/16" Galv Bar Grating	125	SQ FT				
#3	ASTM A36 steel - L 3X3X5/16	10	LF				
#4	TRW Nelson Studs 3/4" Ø x 4 3/16 or equal	24	EA				
#5	3000 psi - Normal Wt Concrete	60	CU YD				
#6	ASTM A615 - Deformed Reinforcement	4.4	TONS				
#7	Excavation - Earth	810	CU YD				
#8	Backfill - 1" Crushed Stone	340	CU YD				
#9	PVC Sch 40 - 4" Ø pipe	10	LF				
#10	ASTM A36 Steel - R 3/4 x 1-0" x 1'-2"	6	EA				
#11	Backfill - Earth	470	CU YD				



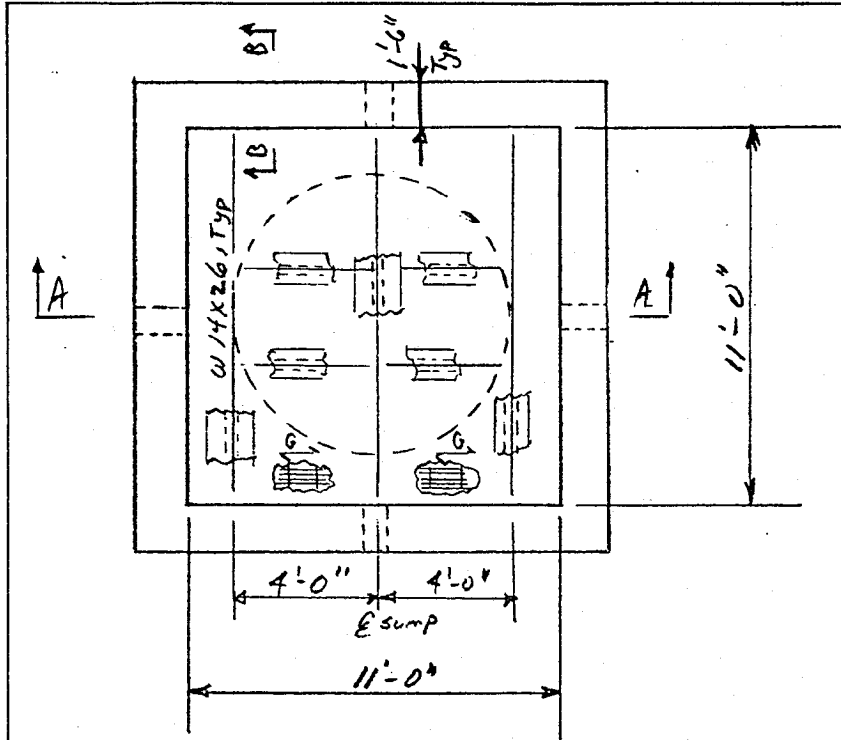
SHEET 2 OF 5  
 PROJECT KIF  
 SUBJECT Coal Yard Sump  
 COMPUTED BRP DATE 5/94  
 CHECKED \_\_\_\_\_ DATE \_\_\_\_\_



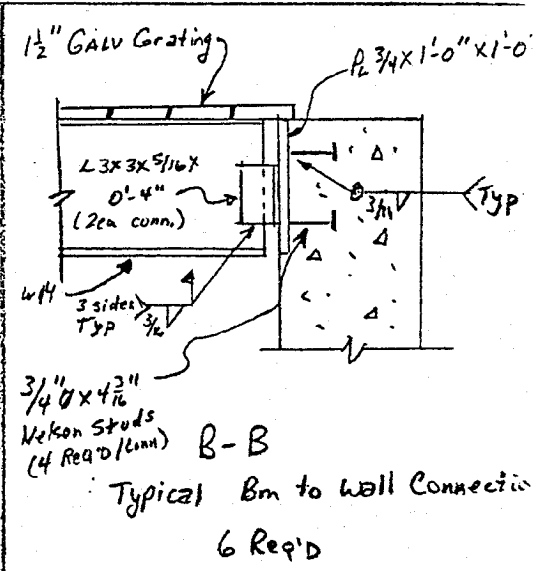
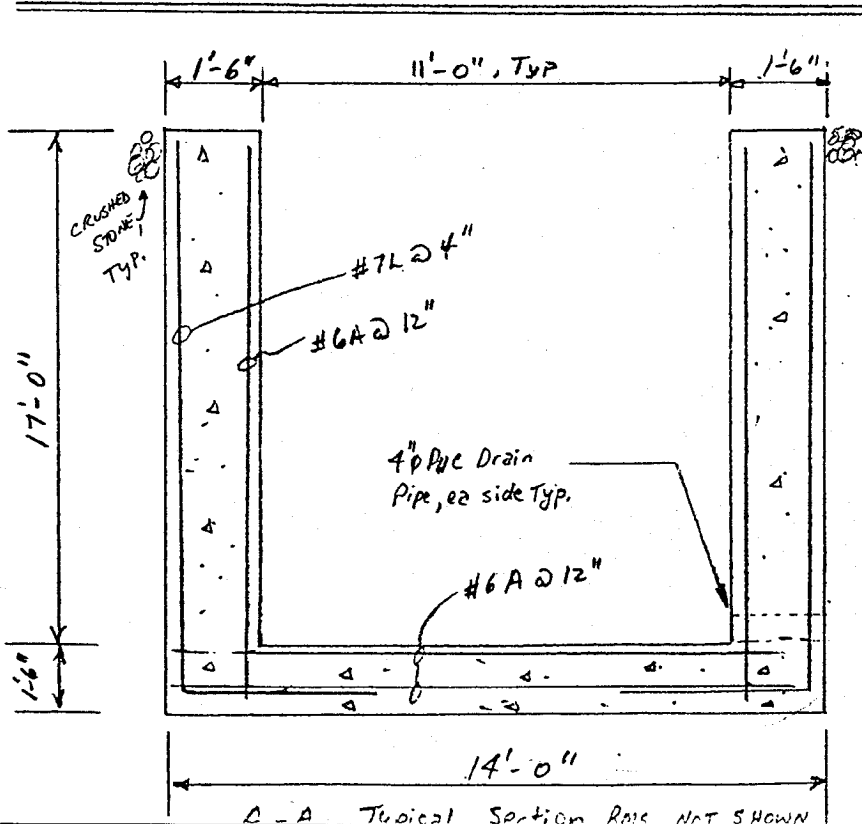
KINGSTON FOSSIL PLANT

COAL YARD DRAINAGE SUMP

FILE: KCOALYD



PLAN - SUMP W/ PLATFORM  
NTS



VA 11030 (WM-7-75)

