

UNITED STATES GOVERNMENT

Memorandum

TENNESSEE VALLEY AUTHORITY

FDP '83 0922 011

TO : H. S. Fox, Director of Fossil and Hydro Power, 716 EB-C

FROM : M. N. Sprouse, Manager of Engineering Design, W11A9 C-K

DATE : SEP 22 1983

SUBJECT: KINGSTON STEAM PLANT - ANNUAL ASH DISPOSAL AREA INSPECTION

Attached is a report from D. R. Galloway to R. E. Harris dated September 20, 1983 (FDP 830920 012), concerning the joint inspection of the Kingston Steam Plant ash disposal area. This report includes recommendations for corrective work. I concur with these recommendations.

M. N. Sprouse

DRG
 OPT:DRG:EFS

REX
 Attachments

cc: R. O. Barnett, W9D224 C-K
 C. Bonine, E7B24 C-K
 J. P. Darling, 546 CST2-C, w/attachments
 MEDS, W5B63 C-K
 O. P. Thornton, 102 SPT-K
 F. Van Meter, 500 SPT-K (3)

Principally Prepared By: D. R. Galloway, Extension 3273

S63252.03

BC/PM: *OPB*

MO: _____



Buy U.S. Savings Bonds Regularly on the Payroll Savings Plan

TVA-00005814

UNITED STATES GOVERNMENT

Memorandum

TENNESSEE VALLEY AUTHORITY

FDP '83 0920 012

TO : R. E. Harris, Civil Project Engineer, Fossil Design Projects, 338 SPT-K

FROM : D. R. Galloway, Civil Engineer, Fossil Design Projects, 334 SPT-K

DATE : SEP 20 1983

SUBJECT: KINGSTON STEAM PLANT - ANNUAL ASH DISPOSAL AREA INSPECTION

On August 24, 1983, V. Hutchinson of F&H PR, S. Ahmed of EN DES, and I inspected the ash disposal area at Kingston Steam Plant. We were accompanied on the inspection by E. McClung, Yard Operations Supervisor. Findings were discussed with Mr. McClung and Plant Superintendent, H. F. Clayton.

The last annual inspection was made on August 4, 1983 (CDB 820825 016). An interim inspection was made on March 23, 1983 (FDP 830405 010).

On the attached print of drawing 10N420, the different areas are designated.

Change In Dikes Since Last Inspection

There has been no significant change in the exterior dikes since last year's annual inspection.

The dikes appear to be stable and generally in good condition. Wetness is still evident at the toe of exterior slope of the south end of dike "C" (see picture number 1 and recommendation number 1). Several small trees were observed along the slope of this dike (see recommendation number 2).

The seepage repair along the east dike adjacent to the condenser intake channel (see pictures numbers 2 and 3) will begin by late September. CSB will construct a clay key and slope cover in accordance with EN DES plans.

An interior ash dike is being constructed for the containment of future dredging. This dike extends northeast from the deflector dike. The divider dike spillway slot has been eliminated by filling with ash.

Change In Pond Operation Since Last Inspection

There has been no basic change in pond operation since last year's annual inspection.

Condition Of Spillways, Skimmers, And Outlets

The standard spillways and skimmers in the stilling pool area appear to be in good condition and functioning properly. The spillway on the west end has been raised a section higher than the remaining spillways. Vegetation could be seen growing with at least one of the spillways/skimmers (see recommendation number 3).



Buy U.S. Savings Bonds Regularly on the Payroll Savings Plan

R. E. Harris
SEP 20 1983

KINGSTON STEAM PLANT - ANNUAL ASH DISPOSAL AREA INSPECTION

The vegetation at the base of the discharge end wall appeared to be excessive (see picture number 4 and recommendation number 4).

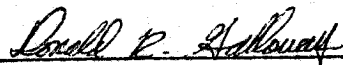
The spillway in the divider dike has been filled with ash, as previously noted. The passage of water into the stilling pool is provided by spillways constructed by plant personnel in 1980 and 1981.

Action On Recommendation Of Last Inspection

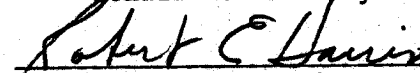
Vegetation was still observed within the spillway; however, I feel this is a regrowth condition. Vegetation was also apparent at the base of the discharge concrete end wall.

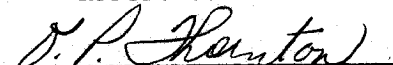
Recommendations

1. Plant personnel should continue to monitor the seepage at the toe of the exterior slope of the sound end of dike "C". Should contact F&H PR, Chattanooga, and EN DES immediately if any changing conditions are observed.
2. Should remove all small trees and brush from exterior slope of dike "C".
3. Should remove any vegetation within the spillway/skimers.
4. Should remove the weeping willow trees and vegetation at and around the base of the discharge end wall.


Donald R. Galloway

Concur:


Robert E. Harris


O. P. Thornton

DRG:EFS

Attachments

cc: O. P. Thornton, 102 SPT-K, w/attachments

OPT:EFS - SEP 20 1983
cc (Attachment):

R. O. Barnett, W9D224 C-K, w/attachments

MEDS, W5B63 C-K, w/attachment, except drawing

M. N. Sprouse, W11A9 C-K

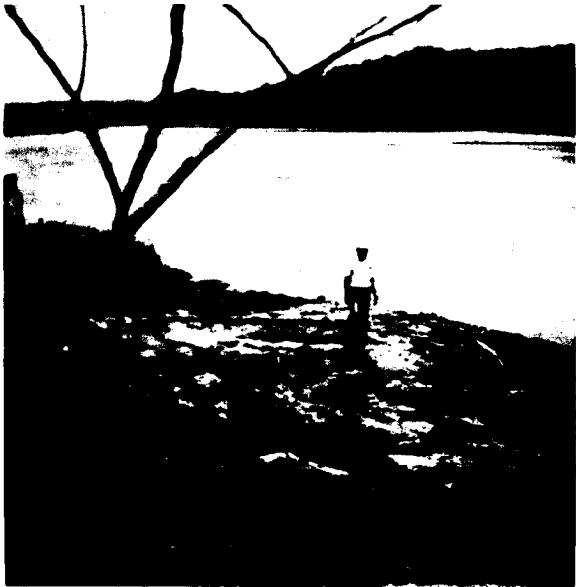
Principally Prepared By: D. R. Galloway, Extension 3273
S63252.04

*KINGSTON STEAM PLANT
1983*

① *SEEPAGE AT TOE OF DIKE "C".*



② *SEEPAGE AT EAST DIKE.*



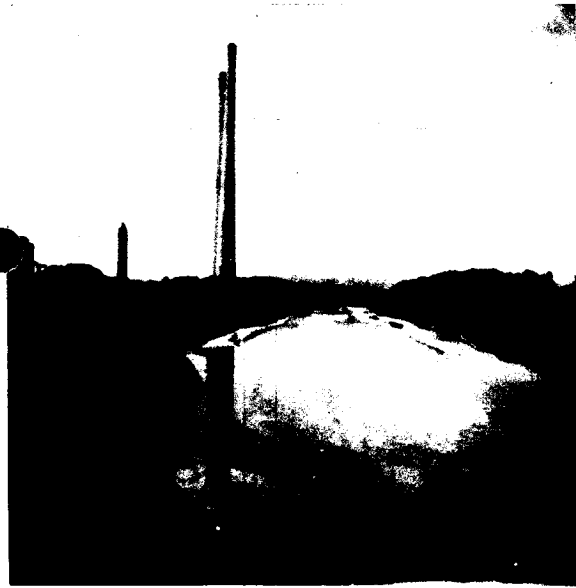
③ *SEEPAGE AT EAST DIKE.*



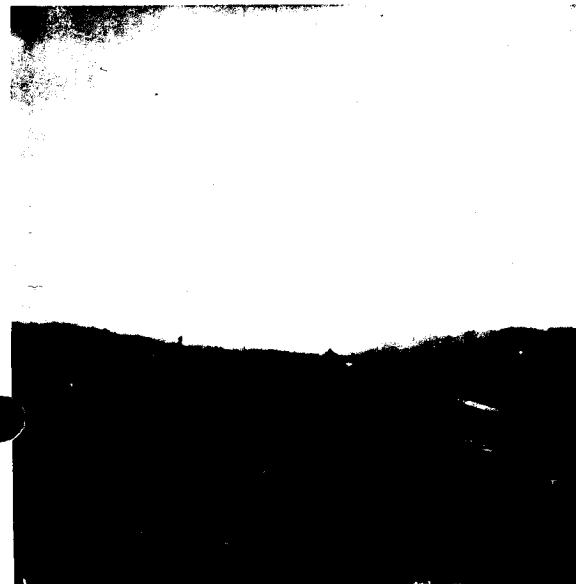
**KINGSTON STEAM PLANT
1983**



- ④ **DISCHARGE /OUTLET NOTE:
VEGETATION.**



- ⑤ **ASH DISCHARGE CHANNEL.**



- ⑥ **ASH EMBANKMENT ADJACENT
TO EAST DIKE.**

UNITED STATES GOVERNMENT

Memorandum

TENNESSEE VALLEY AUTHORITY

FDP '83 0405 010

TO : Robert E. Harris, Civil Project Engineer, Fossil Design Project, 338 SPT-K

FROM : J. P. Hillier Stivers, Civil Engineer, Fossil Design Project, 337 SPT-K

DATE : APR 5 1983

SUBJECT: INTERIM DISPOSAL AREA INSPECTION


Plant: Kingston Steam Plant Area: Ash Disposal AreaDate of last annual inspection: August 4, 1982Date of this inspection: March 23, 1983 Weather: cloudy and coldInspected by: Jerry Chumley (F&H PR) James Hoskins, Jr., (EN DES)
Ed McClung (Yard Supvr) J. P. Hillier Stivers (EN DES)
Joel Paris (F&H PR)

Discussed with: _____

	Excellent	Good	Poor
General condition of perimeter dikes	_____	<u>X</u>	_____
Vegetative cover on slopes	_____	<u>X</u>	_____
Condition of standard skimmers and spillways	_____	<u>X</u>	_____
Condition of outlet structure and channel	_____	<u>X</u>	_____
General condition of divider dike	_____	<u>X</u>	_____
Signs of loss of ash? _____ Yes <u>X</u> No			

Has action been taken on recommendations of annual inspection report? X Yes _____ No

Comments: (1) The small area of wetness at the toe of the exterior slope near the south end of dike C (noted in the August 4, 1982 inspection) is still being watched. It is believed that no danger exists at this time. The plant is to continue to observe this area. (2) Vegetation was growing inside the skimmer of one of the spillways. This vegetation is to be removed. (3) The acidic drainage between the ash dike and intake channel is approximately the same as last year. EN DES and F&H PR are studying ways to eliminate the acidic drainage.


J. P. H. Stivers

JPHS:PH

cc: O. P. Thornton, 102 SPT-K

OPT:PH -4 / 5/83

cc: R. O. Barnett, W9D224 C-K

MEDS, W5B63 C-K

M. N. Sprouse, W11A9 C-K

S53089.10



Buy U.S. Savings Bonds Regularly on the Payroll Savings Plan