

V. C. Hoop, Chief Civil Engineer, 502 AS

V. E. Calvert, Staff Civil Engineer (Highway and Railroad), 502 AS

October 24, 1968

KINGSTON STEAM PLANT - ASH DIKES

On September 24, 1968, A. E. Harty, R. J. Brown, and J. L. Glover of Engineering Design and Ralph Brown of DEP inspected the ash dikes at Kingston Steam Plant and discussed the findings with A. O. Spencer, Plant Superintendent.

The ash dikes around the initial ash area are being raised at this time. They are being raised with a very flat slope, leaving a wide berm at the top of the initial dikes and having a top width of 152 feet on the raised dike (see photographs 1 and 2). They look excellent with no problems of stability. An ash dike along the west side of this area is also being built to protect the drainage from the railroad storage yard as was recommended in last year's report (see photograph 4). Two new spillways have been built in the northeast corner of this area (see photograph 5). The skimmers were not built according to the standard drawing. They have square metal skimmers, but appear to function much like the standard.

The ash dikes around the remainder of the ash area are in good condition, much the same as last year. The tops of dikes have been sloped to the inside and the drainage picked up in pipes and taken to the ash pond. This has allowed the plant to establish some vegetation on the inside slopes. There is hardly any vegetation on the outside slopes. The wooden skimmers in this area have been rebuilt with more height to allow greater freeboard (see photograph 6).

Our recommendations are as follows:

1. Continue the same type of dike raising as is now being done.
2. When the dikes are raised in the other ash area, protect the drainage under the railroad with a dike as is being done in the initial ash area.
3. Replace the wooden spillways with the standard type when the water level is raised.
4. Attempt to get some vegetation on the outside slope of the ash dikes. We suggest sorghum.

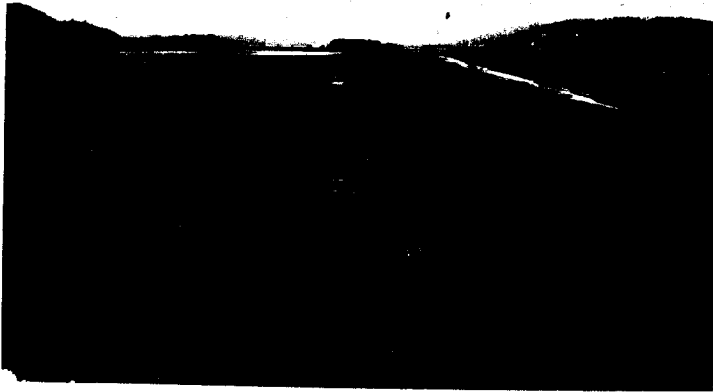
V. E. Calvert

RJB:JCH
Attachments

CONCUR:

V. C. Hoop

KINGSTON STEAM
PLANT
1968



①
*Outside slope of east dike along
initial Ash Disposal Area.*

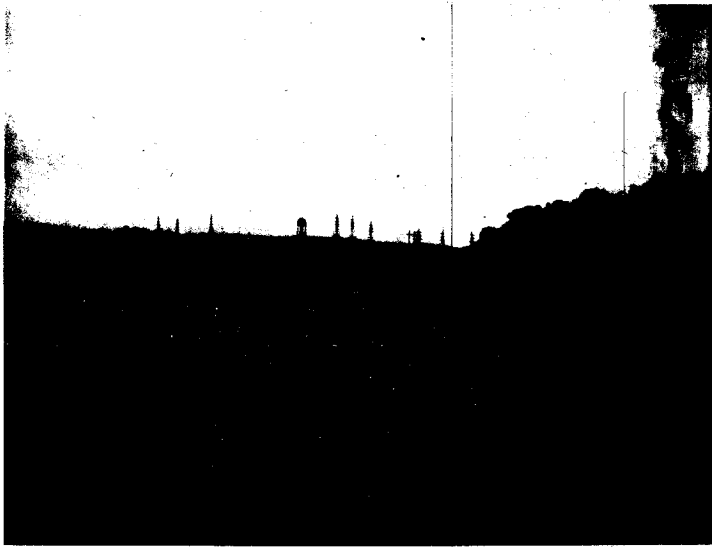


②
*Inside slope of east dike along
initial Ash Disposal Area.*

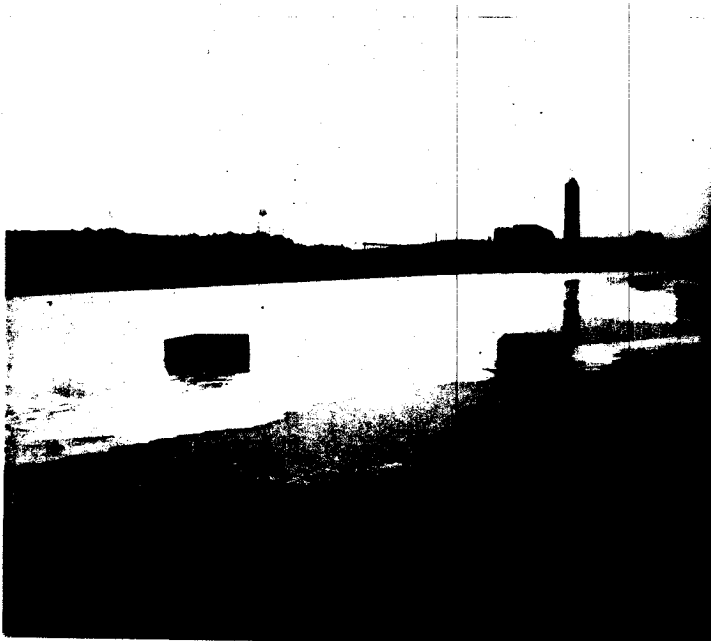


③
Raising divider dike.

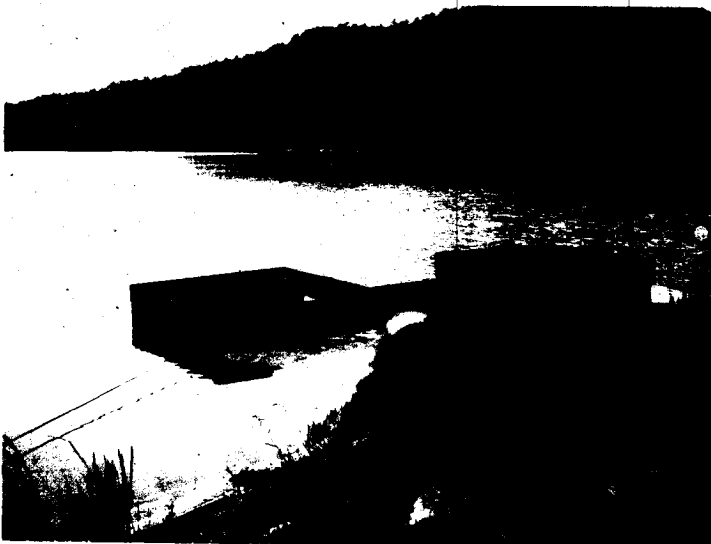
**KINGSTON STEAM
PLANT
1968**



④
*Beginning construction on dike
along Railroad Storage Yard to
protect railroad drainage.*



⑤
*New spillways in initial Ash
Disposal Area.*



⑥
*Spillway going to river from
Ash Disposal Area.*