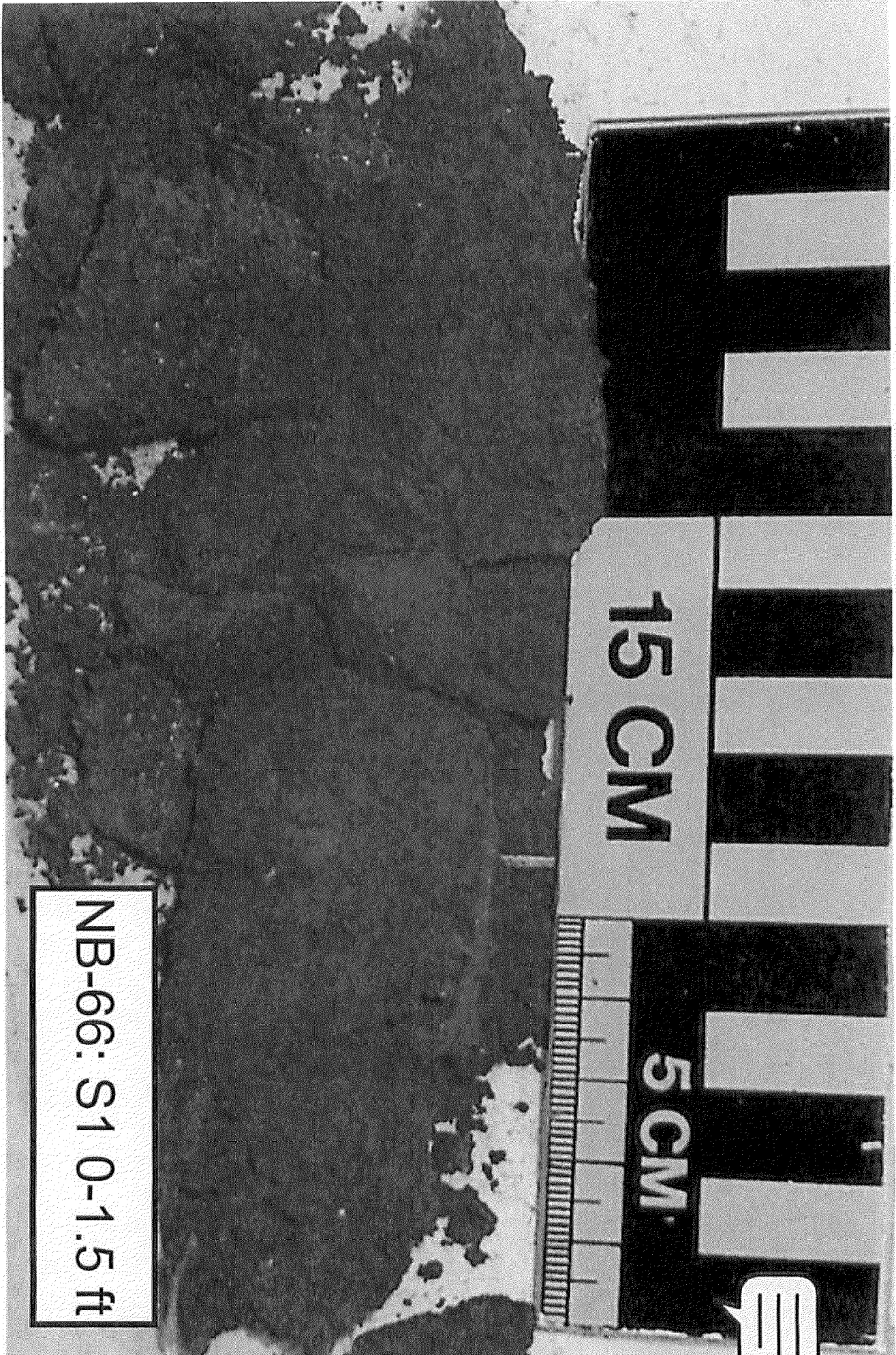


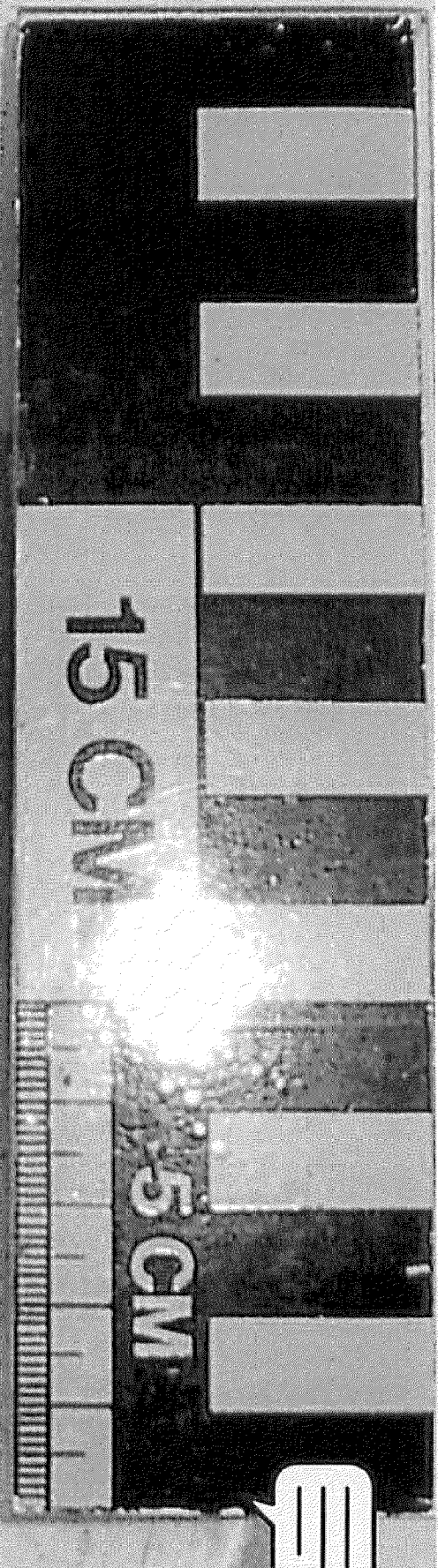
RESIDUAL SOIL



NB-66: S1 0-1.5 ft



NB-66: S2 6-7.5 ft



NB-66: S3 9.5-11 ft

15 CM

5 CM

NB-66: S4 14-14.5 ft





NB-66: S5 19-20.5 ft



NB-66: S6 24-24.5 ft

15 CM

5 CM



NB-66: S7 29-30.5 ft