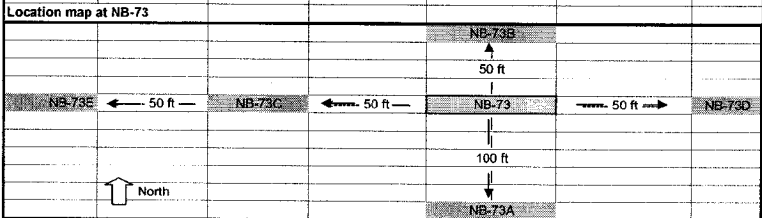
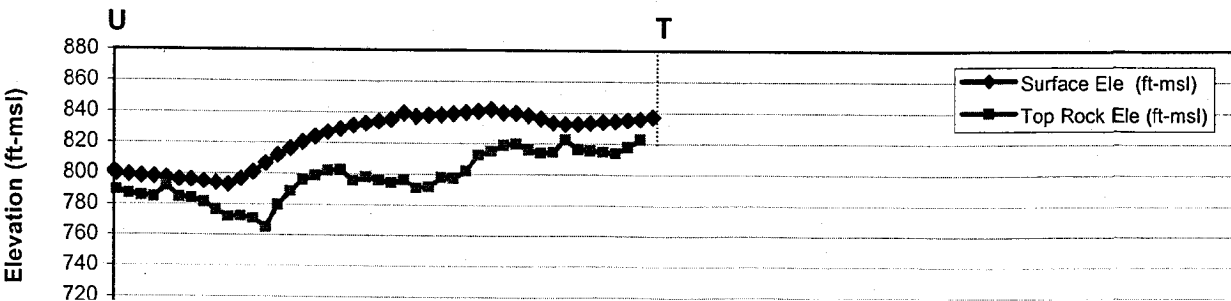
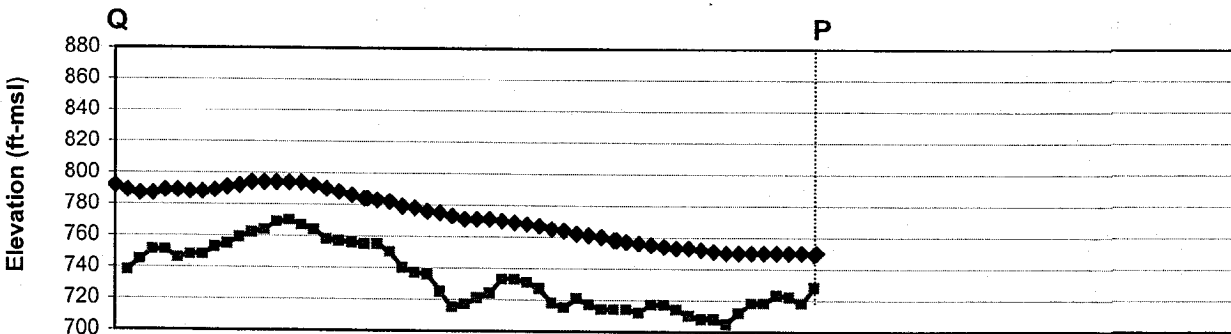
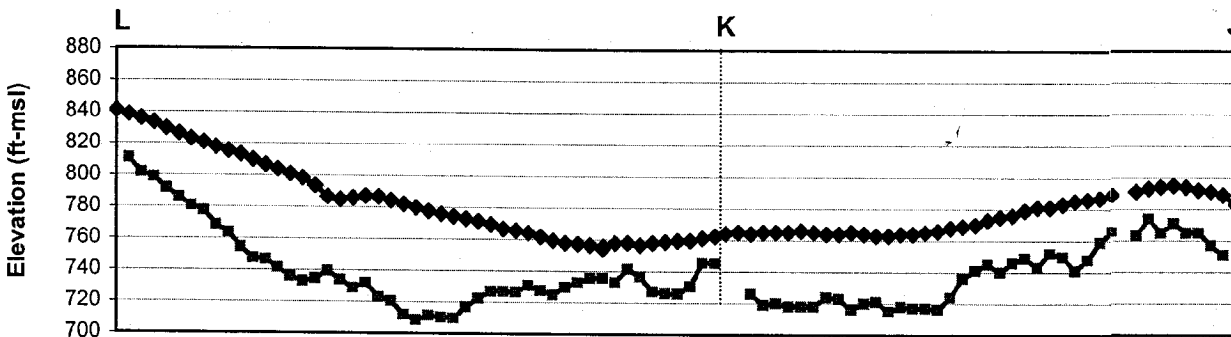
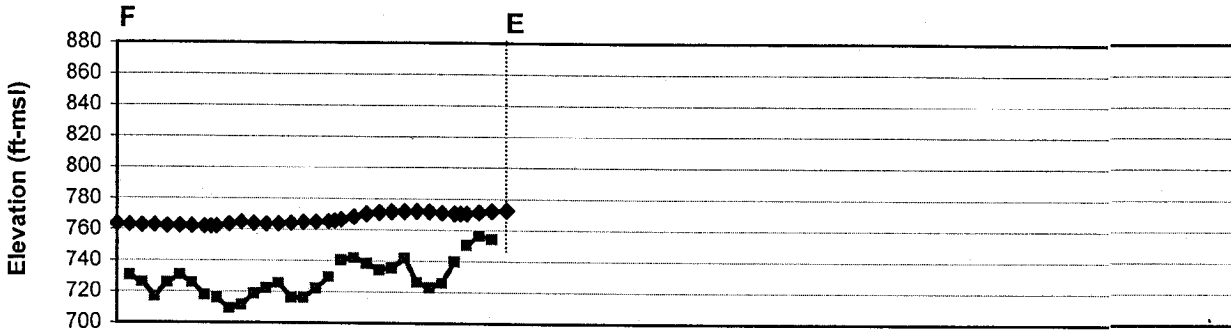
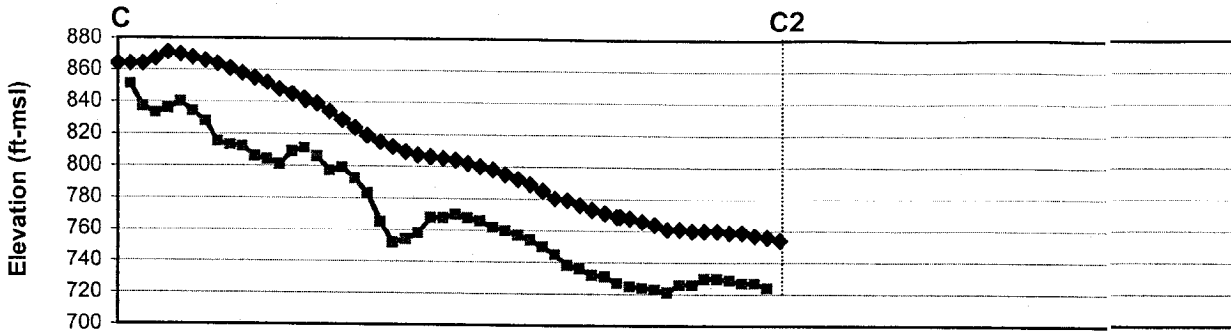
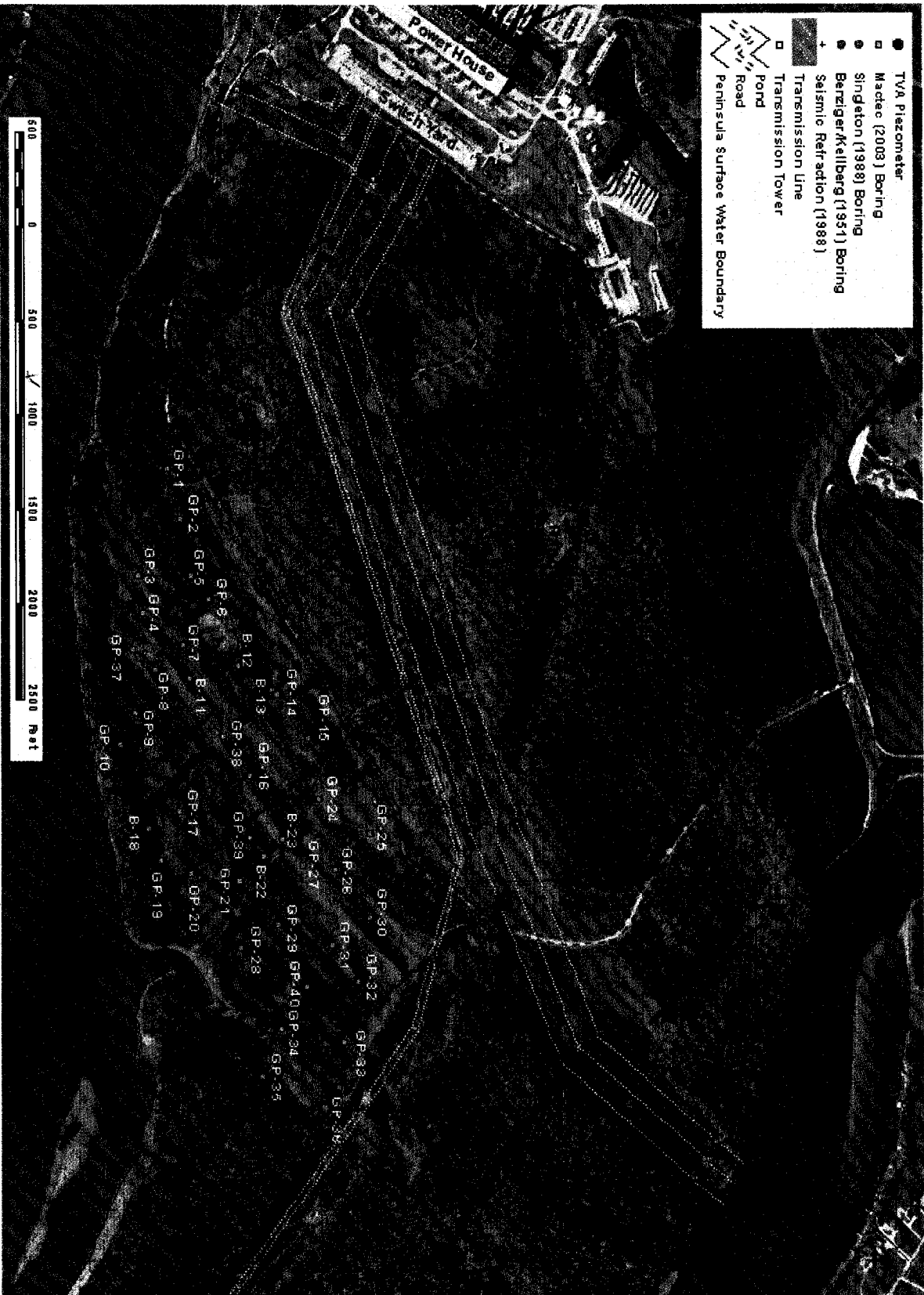


KIF Peninsula - Geoprobe Results								P = Push, Hydraulics only
note: red text holes require resurvey								LH = Light Hammer
Tennessee Lambert (NAD 27)				NGVD 29				MH= Moderate Hammer
								HH= Heavy Hammer
HOLE ID	Depth to Resistance (ft)	Northing (ft)	Easting (ft)	Ground Elevation (ft-msl)	Top of Resistance (ft msl)	Off-set (ft)	Off-set (direction)	Resistance Notations (ft from ground surface)
NB-3	39	549615.23	2441041.10	755.44		23	south	0 to 24' P only, 24' to 37' LH, 37' to 38' MH, 38' to 39' HH & loamy
NB-4	59	549618.48	2441047.69	746.80	687.80			0 to 21.5 P only, 21.5' to 38' LH, 38' to 40' HH, 40' to 44' P only, 44' to 54' LH & P, 54' to 59' HH
NB-5	Deleted	550326.85	2441195.87	812.32				inaccessible
NB-6	35.5	550124.49	2441200.66	770.12	734.62			LH 0 to 34, HH to 35.5 (Loamy)
NB-7	63	549627.05	2441208.11	760.65		5	East	Push and LH 0 to 56, HH 56 to 63 (Loamy)
NB-8	53.3	550429.54	2441364.13	824.23		14.1	East	0 to 12' P only, 12' to 27' LH, 27' to 51' P only, 51' to 52' MH, 52' to 53.3' HH
NB-9	53.8	550227.71	2441370.38	793.66		10.1	East	0 to 12' P, 12' to 16' LH, 16' to 28' P, 28' to 36' P&LH, 36' to 40' LH&MH, 40' to 52' LH, 52' to 53.8' HH
NB-12	29.6	549653.41	2441417.18	755.43	725.83			Push 0 to 19.8, MH to 21.8, Push to 23.7, MH to 29.2, HH to 29.6 (SANDY)
NB-13	50.5	549425.15	2441500.07	745.68	695.18			Push 0 to 36.8, MH to 47.5, Push to 50.5
NB-14	28.3	550534.65	2441532.38	826.49	796.19			0 to 8P, 8' to 12' LH, 12' to 18' LH&MH, 18' to 20' MH, 20' to 22' LH, 22' to 24' P, 24' to 25' MH, 25' to 27' MH, 27' to 28.3' HH
NB-15	48.3	550337.11	2441545.00	803.85	755.55			0 to 40' P, 40' to 44' MH, 44' to 46' MH to HH, 46' to 47.3' HH
NB-16	19.7	550137.49	2441545.01	779.03	759.33			Push 0 to 8, MH to 12, HH 19.7
NB-17	60.5	550692.68	2441671.50	832.89	772.39			0 to 15' P, 16' to 28' P&LH, 28' to 35' P to 36' LH, 36' to 57' P, 57' to 60.5' HH
NB-19	31.7	550498.59	2441685.44	814.48	782.78			Push 0 to 2, MH to 14, Push to 15.5, HH to 31.7 (loamy)
NB-20	57.2	550099.14	2441697.67	765.74				Push to 12.2, LH to 13.7, Push to 57.2, HH at 57.2 (SANDY)
NB-23	49.3	549433.16	2441690.16	753.87				
NB-27	37.2	550206.54	2441866.14	765.60	728.40			0-26' P, 26'-28' LH, 28'-32' P, 32'-36' LH, 36'-37.2' HH
NB-28	55.1	549678.18	2441773.72	752.33	697.23			Push 0 to 17, MH to 18.5, Push to 32, HH to 35, Push to 37, HH to 55.1 (SANDY)
NB-29	Deleted	549716.17	2441808.23	739.62				Location Inaccessible, Down ravine in the middle of creek
NB-30	76	550905.12	2442018.47	855.36	779.36			0 to 18' P, 18' to 20' LH, 20' to 24' MH, 24' to 28' MH, 28' to 50' LH, 50' to 70' P&LH, 70' to 74' MH, 74' to 76' HH
NB-31	25.9	550699.83	2442020.55	824.83	796.93			0-20' LH&P, 20'-25.9' LH-MH-HH (Truck Walking down Hill)
NB-32	44.6	550511.14	2442027.98	794.07	749.47			Push 0 to 5, LH to 11, MH to 21, Push to 41.8, HH to 44.6
NB-33	33.9	550315.82	2442040.71	764.31	730.41			Push 0 to 17, LH to 30, MH to 33.9 (SANDY)
NB-34	23.2	550127.00	2442051.50	746.91	723.71			Push 0 to 17.2, LH to 19.0, HH to 23.2
NB-36	8.5	549708.16	2442050.55	747.64	739.14			Push 0 to 6.5, MH to 8.5
NB-37	21	550995.08	2442189.76	848.02		4	South	0 to 12' P, 12' to 16' MH to HH, 16' to 20' LH, 20' to 21' HH
NB-38	23.3	550805.76	2442193.52	816.69		3.83	West	0 to 8' P&LH, 8' to 20' MH, 20' to 23'-4" HH
NB-40	13.3	551076.38	2442372.59	827.35		20.5	South	0 to 8' P, 8' to 12' MH, 12' to 13.3' HH
NB-42	37.7	550691.23	2442374.03	778.37	740.67			Push 0 to 12.4, LH to 22, Push to 34, LH to 37.7
NB-43	35.3	550501.85	2442367.58	764.07	728.77			Push 0 to 8, MH to 14, Push to 22, MH to 35.3 (SANDY)
NB-45	23.7	549851.56	2442479.11	761.45	737.75			Push 0 to 17, HH to 23.7
NB-46	45.4	550253.21	2442561.63	752.18		26	East	Push 0 to 5, MH to 13, Push to 23, MH to 35, Push to 37, HH to 45.4 could not locate
NB-48	Deleted	551080.97	2442776.31	810.59				
NB-49	74.5	550888.60	2442732.86	787.78	713.28			Push and LH 0 to 42, HH to 74.5
NB-50	23.5	550731.94	2442807.28	771.36	747.86			Push 0 to 15, MH to 23.5
NB-51	51.4	550350.81	2442748.90	754.33	702.93			Push 0 to 25, LH to 26.5, Push to 37.2, MH to 38, Push to 45, MH to 51.4 (Sandy)
NB-52	75.1	549990.54	2442848.37	775.21	700.11			Push 0 to 2.5, MH to 75.1 (Sandy)
NB-53	54.2	549811.36	2442824.67	774.53	720.33			Push 0 to 16.2, MH to 36, Push to 43.5, MH to 47, HH to 54.2
NB-55	35	551142.98	2442970.31	794.60		28	South	0-16' LH, 16'-28' P, 28'-32' LH to MH, 32'-35' HH
NB-60	41.7	551347.17	2443231.71	798.75		48	South	0-20' LH, 20'-24' MH, 24'-41.7' HH
NB-61	61.9	550879.19	2443253.67	766.37		12	North	Push 0 to 8.2, MH to 28, Push/MH to 36.5, MH to 48, HH to 61.9 Sandy
NB-64	35.6	551076.22	2443316.44	775.13	739.53			Push 0 to 29, MH to 35.6
NB-67	49.6	549688.68	2443407.78	780.10	730.50			MH 0 to 23, Push to 31, MH to 45, Push to 49.6 (Sandy)
NB-68	55.9	551132.02	2443506.10	773.16		42.8	South	Push 0 to 8, MH to 16.5, HH to 55.9 offset
NB-69	68.7	550739.28	2443575.53	765.49	696.79			Push 0 to 8, MH to 15, Push to 28, MH to 34, HH to 35.5 MH to 42, HH to 68.7
NB-70	30.4	550055.79	2443581.96	768.05	737.65			Push 0 to 3, MH to 12, HH to 25, MH to 30.4
NB-72	21.2	551141.39	2443678.20	776.84	755.64			Push 0 to 3, MH to 12, HH to 21.2
NB-73A	76	550546.45	2443773.74	747.53	671.53			0-40' P, 40'-48' MH, 48'-52' P, 52'-55' P&LH, 55'-58' LH&MH, 58'-73' P&LH, 73'-76' LH-MH-HH (Loamy)
NB-73B	30.3	550546.45	2443773.74	747.53	717.20			0-16P, 16-20' LH, 20'-28' P&LH, 28-30'-4" HH
NB-73C	120	550546.45	2443773.74	747.53	627.53			0-30P, 30'-32' LH, 32'-67' P&LH, 67'-69' HH, 69'-91' P&LH, 91'-93' P, 93'-106' LH, 106'-108' P, 108'-120' LH&P
NB-73D	35	550546.45	2443773.74	747.53	712.53			0-18' P, 18'-20' LH, 20'-34' P&LH, 34'-35' HH
NB-73E	33	550546.45	2443773.74	747.53	714.53			0-18' P, 18'-24'-24'-28' P, 28'-32' LH, 32'-33' HH (Silty w/loam)
NB-75	35.2	549947.10	2443757.52	751.08	715.88			Push 0 to 10, MH to 21, LH to 33.4, MH to 35.2 (Sandy)
NB-78	28.8	551129.05	2444016.59	775.43	746.63			Push 0 to 28.8
NB-80	51.8	550237.50	2444094.58	747.00	695.40			Push 0 to 12, MH to 28, HH to 35, Push to 48, MH to 51.6 (Sandy)
NB-83	35.7	550166.11	2444328.55	743.35	707.65			Push 0 to 21, MH to 35.7 (Sandy)
NB-86	Deleted	550530.01	2440938.14	877.74				inaccessible
NB-87	23.9	550643.76	2441240.55	873.37		14.7	West	0-4' P, 4'-8' MH, 8'-12' MH&HH, 12'-20' P, 20'-22' MH, 22'-23.9' HH
NB-88	59	550716.66	2441445.55	854.33		15.4	West	0-16' P, 16'-26' LH, 26'-40' P, 40'-46' LH, 46'-48' HH, 48'-56' LH&MH, 56'-59' HH
NB-89	42.3	550760.18	2441618.74	848.05		7	West	0-37' P, 37'-41' MH, 41'-42.3' HH





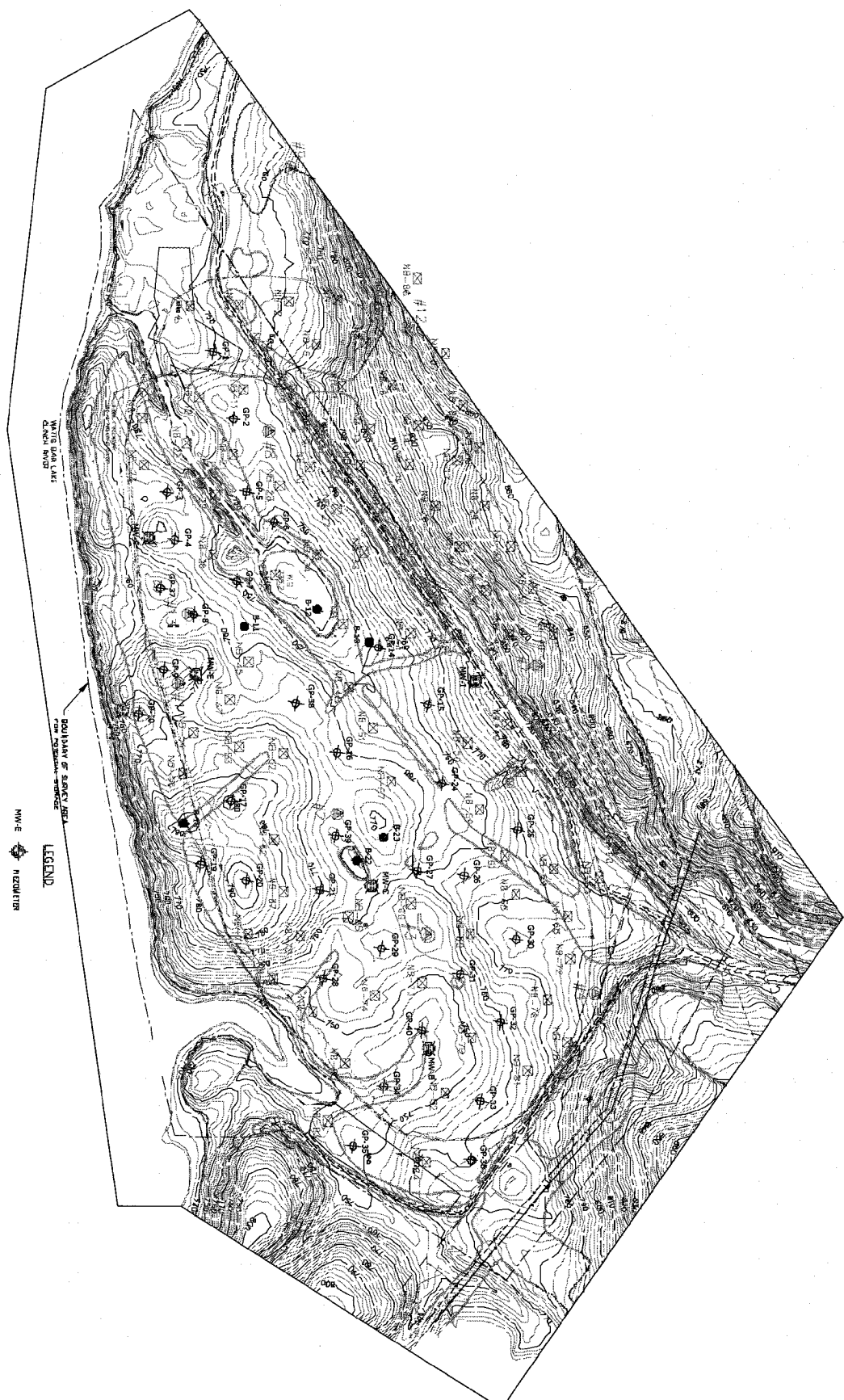
$1'' \approx 300' H$  ;  $1'' \approx 100' V$



- TVA Piezometer
- Madec (2008) Boring
- Singleton (1988) Boring
- Benziger/Kellberg (1951) Boring
- + Seismic Refraction (1988)
- Transmission Line
- Transmission Tower
- ▭ Pond
- ▭ Road
- ▭ Peninsula Surface Water Boundary



1" = 800'



WATTS BAR LAKE  
 BOUNDARY OF SERVICE AREA  
 LEGEND  
 WAVE RIZOU/TIR  
 NEW BORNIES  
 5 FT HOLES  
 MACTIC BORNIES  
 GR-20