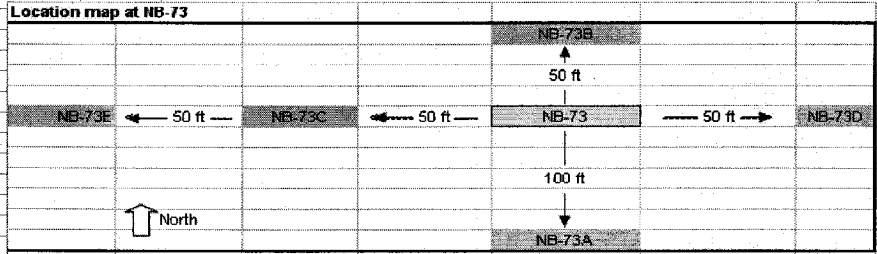


KIF Peninsula - Well and Boring Locations Requiring Resurvey

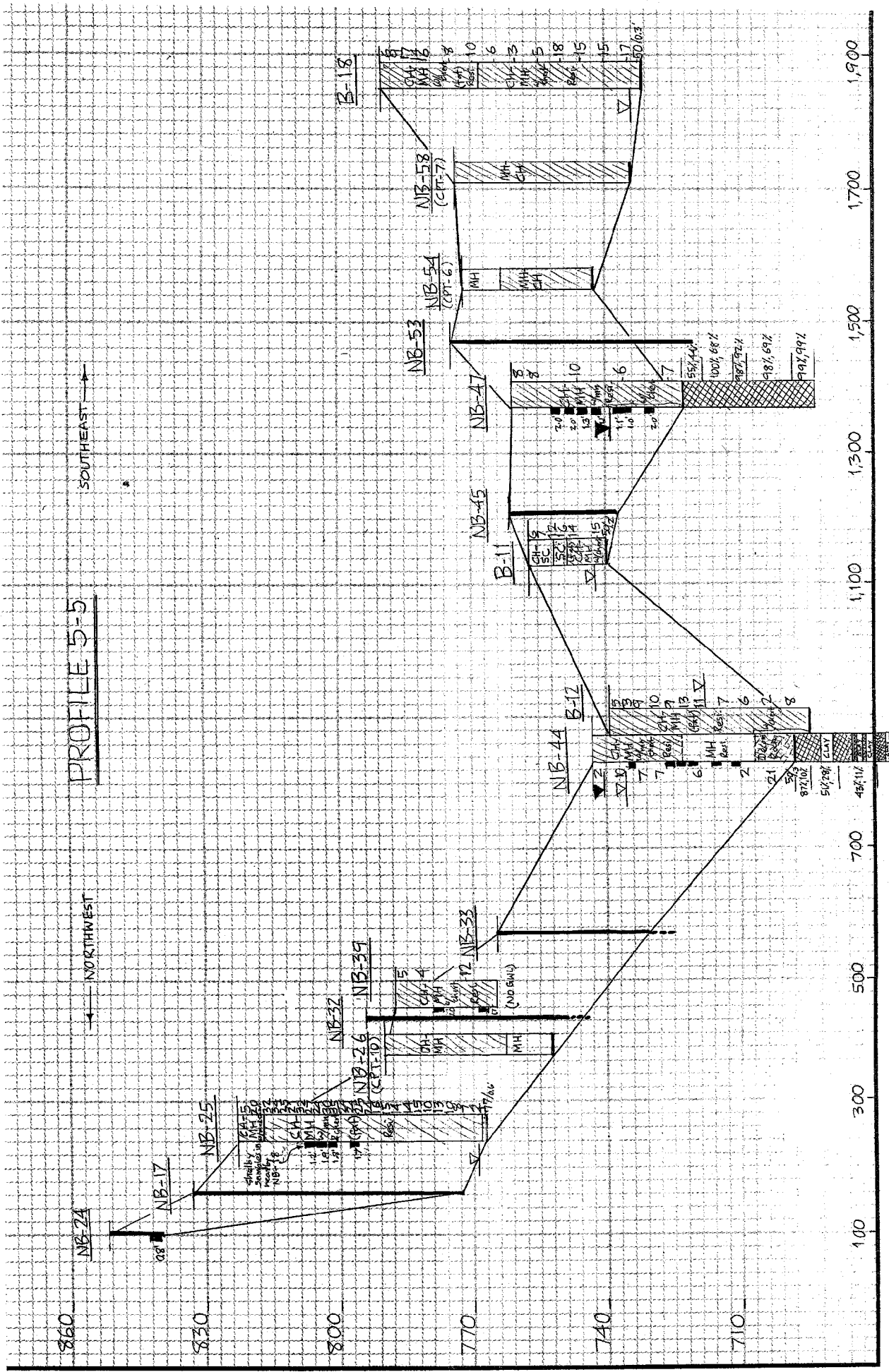
HOLE ID	Original Survey			Off-set (ft)	Off-set (direction)
	Tennessee Lambert (NAD 27)		NGVD 29 Ground Elevation (ft-msl)		
	Northing (ft)	Easting (ft)			
<b>Boring Locations Originally Surveyed</b>					
NB-3	549815.23	2441041.16	755.44	23.0	south
NB-7	549927.06	2441209.11	760.65	5.0	East
NB-8	550429.54	2441364.13	824.23	14.1	East
NB-9	550227.71	2441370.38	793.66	10.1	East
NB-18	550498.59	2441685.44	814.48	6.5	S 82 degrees W of original staked location
NB-22	549601.93	2441600.16	739.35	50.0	S 14 degrees W of original staked location
NB-37	550995.08	2442189.76	848.02	4.0	South
NB-35	never surveyed			200.0	N 45 degrees E of NB-36 and about 20 feet SE from the edge of the existing pond
NB-38	550805.76	2442193.52	816.69	3.8	West
NB-40	551076.38	2442372.59	827.35	20.5	South
NB-44	550230.34	2442326.52	743.01	9.0	S 85 degrees E of original staked location
NB-46	550253.21	2442581.63	752.18	26.0	East
NB-55	551142.98	2442970.31	794.60	28.0	South
NB-60	551347.17	2443231.71	798.75	48.0	South
NB-61	550879.19	2443263.67	766.37	12.0	North
NB-63	551260.87	2443352.08	779.64	39.0	S 45 degrees E of original staked location
NB-68	551132.02	2443506.10	773.16	42.8	South
NB-87	550643.76	2441240.55	873.37	14.7	West
NB-88	550716.66	2441445.55	854.33	15.4	West
NB-89	550780.18	2441618.74	848.05	7.0	West
<b>Well Locations Not Originally Surveyed</b>					
MW-10A	550030.19	2441383.04	768.11		at NB-10
MW-10B	550030.19	2441383.04	768.11		at NB-10
MW-21A	549791.49	2441645.61	757.00		at NB-21
MW-44A	550230.34	2442326.52	743.01		at NB-44
MW-44B	550230.34	2442326.52	743.01		at NB-44
MW-47A	549775.07	2442632.74	762.78		at NB-47
MW-63A	551260.87	2443352.08	779.64		at NB-63
MW-63B	551260.87	2443352.08	779.64		at NB-63
MW-66A	550502.24	2443453.56	752.66		at NB-66
MW-74A	550357.65	2443822.35	752.05		at NB-74
MW-77A	550108.13	2443887.66	749.32		at NB-77
MW-81A	550973.35	2444125.88	762.63		at NB-81
MW-81B	550973.35	2444125.88	762.63		at NB-81
<b>New Boring Locations Not Originally Surveyed</b>					
NB-22A	never surveyed			3.4	S 55 degrees W of NB-22
NB-47A	never surveyed			9.0	N 48 degrees E of NB-47
NB-73A	never surveyed			5.0	N 11 degrees E of NB-73
NB-74A	never surveyed			8.0	N 65 degrees E of NB-74
NB-77A	never surveyed			11.0	N 75 degrees E of NB-77
NB-85A	never surveyed			4.3	N 25 degrees W of NB-85
NB-85B	never surveyed			7.9	N 25 degrees W of NB-85
NB-73B	never surveyed			50.0	N of NB-73
NB-73C	never surveyed			50.0	E of NB-73
NB-73D	never surveyed			50.0	W of NB-73
NB-73E	never surveyed			100.0	W of NB-73

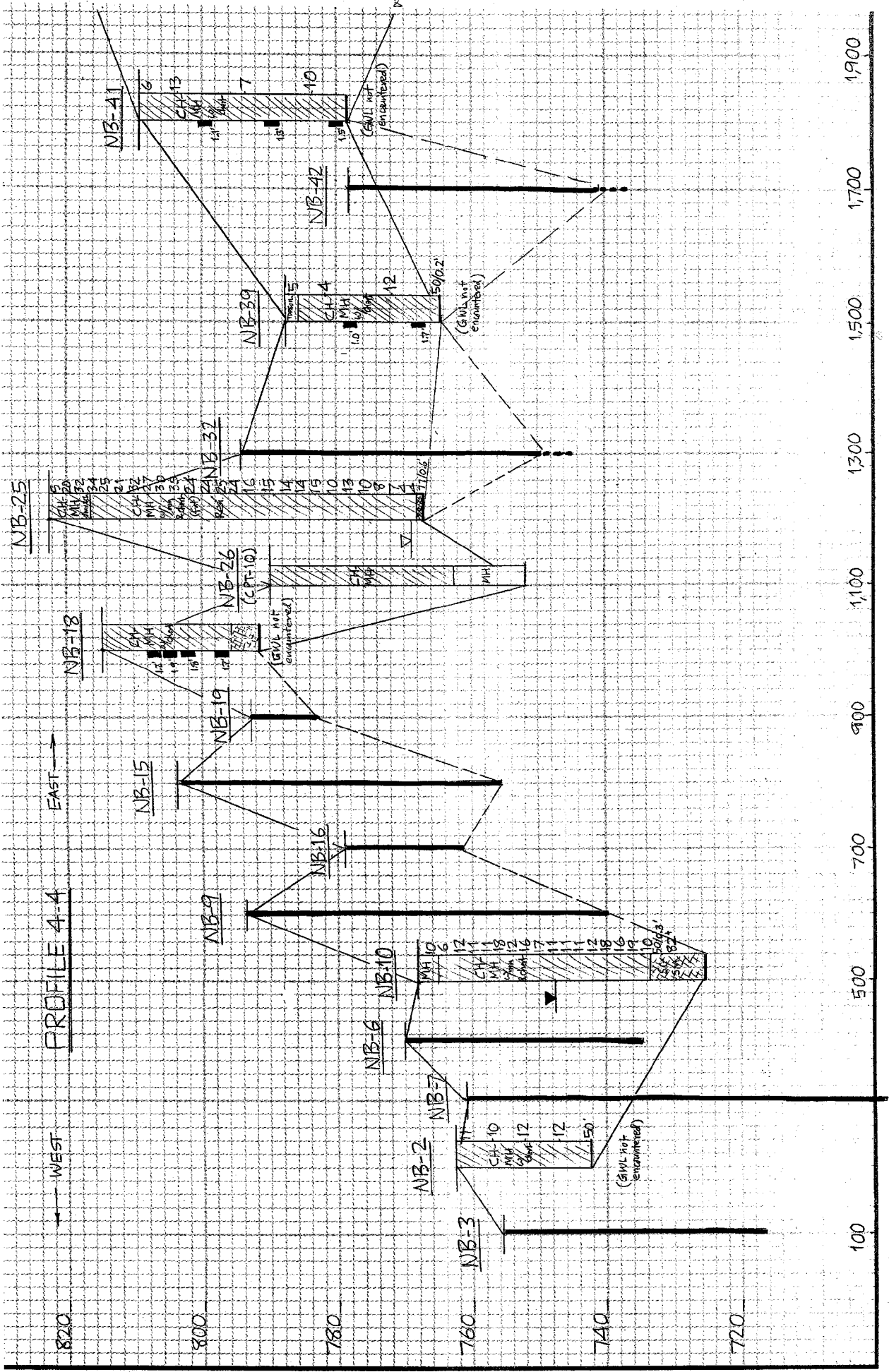


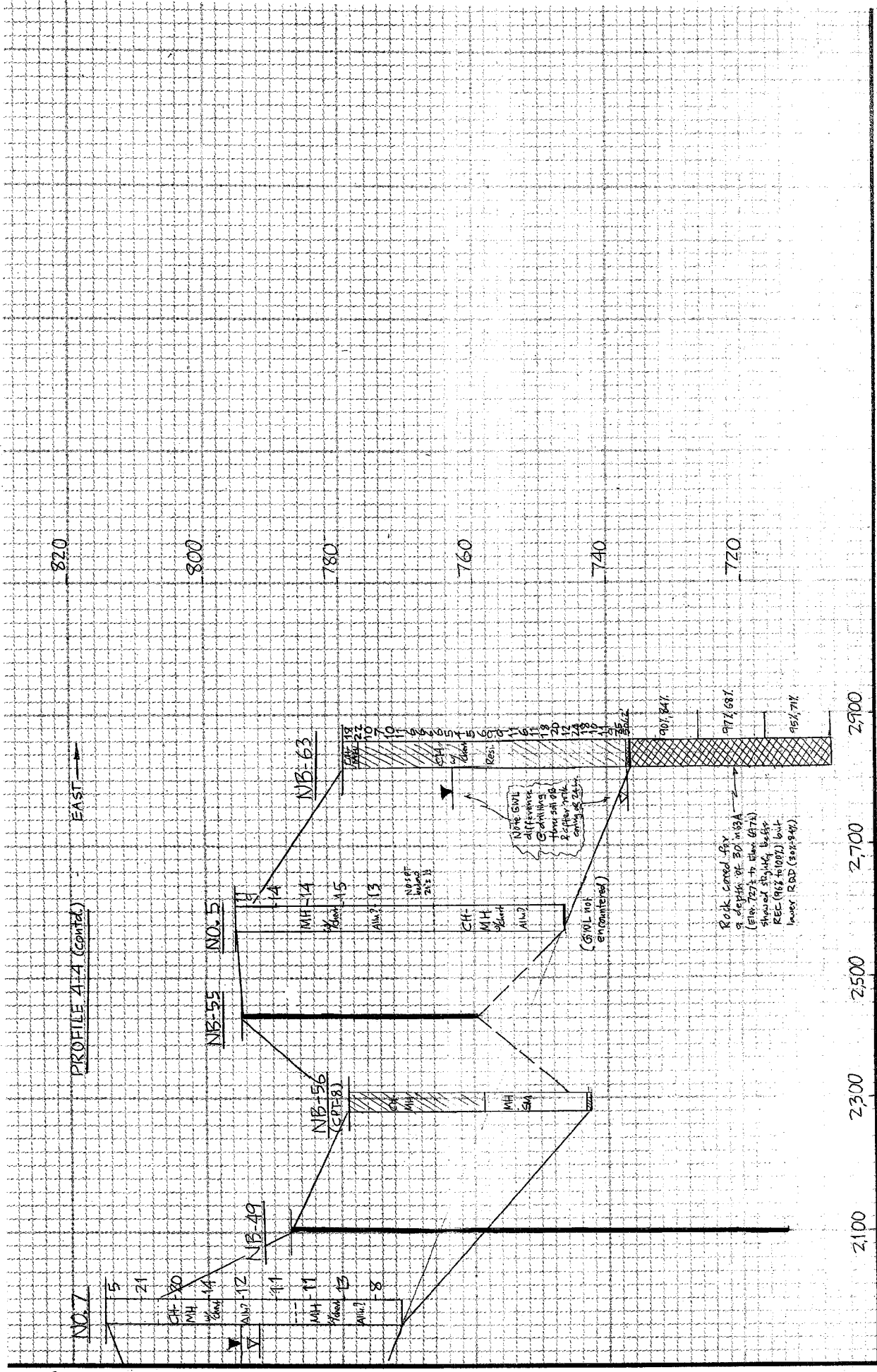
# PROFILE 5-5

SOUTHEAST

NORTHWEST







4