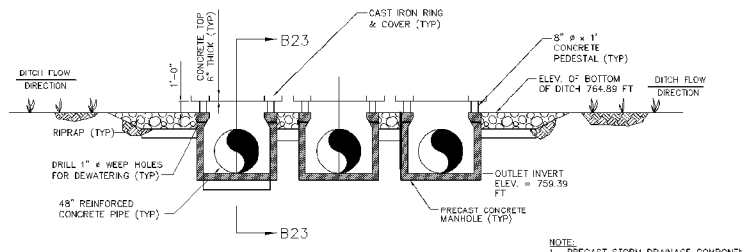


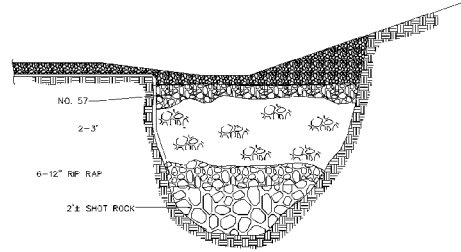
A
B
C
D
E
F
G
H

A
B
C
D
E
F
G
H

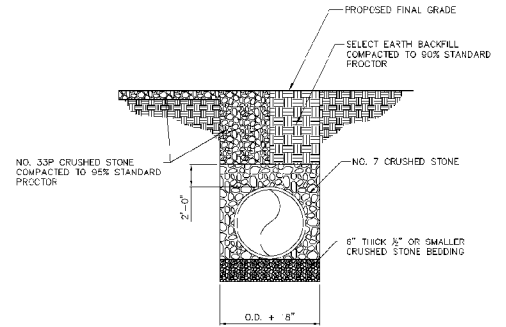


DETAIL A21
STORM WATER POND DROP INLET
SCALE: 1" = 5'

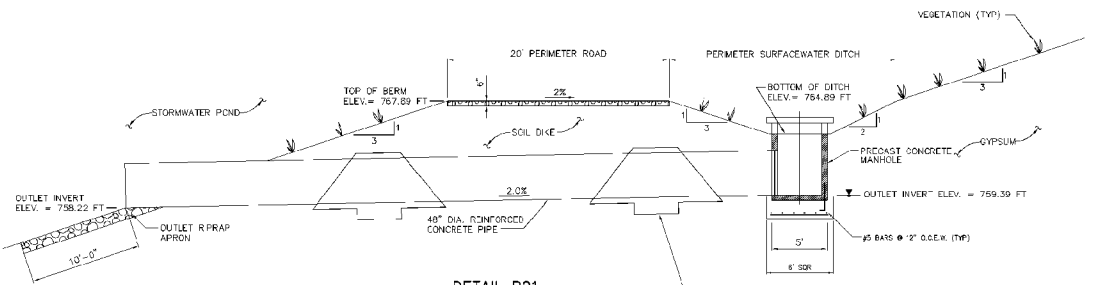
NOTE:
1. PRECAST STORM DRAINAGE COMPONENTS SHALL BE MANUFACTURED IN CONFORMANCE WITH ASTM C478. JOINT SEALS SHALL CONSIST OF BUTYL RUBBER ROPE CONFORMING TO ASTM C990.



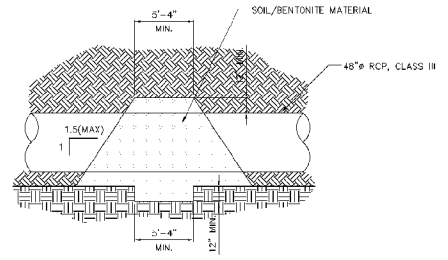
SUBGRADE STABILIZATION (IF REQUIRED)



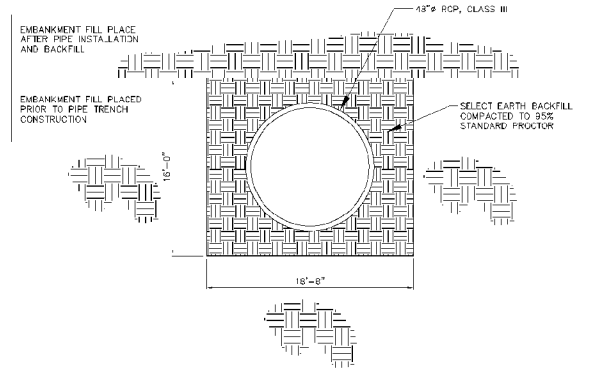
TYPICAL PIPE INSTALLATION DETAIL FOR RCP AND HDPE
N.T.S.



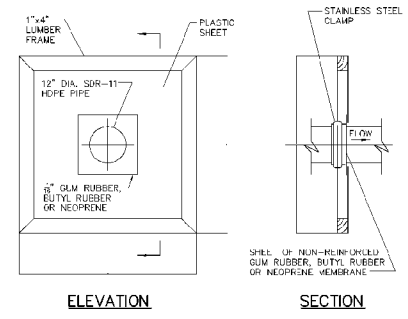
DETAIL B21
DROP INLET TO STORM WATER POND
SCALE: 1" = 5'



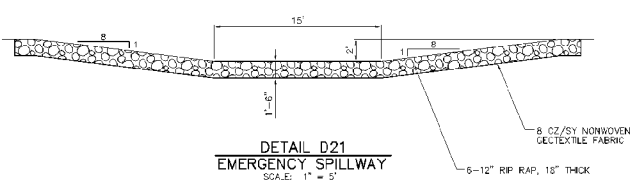
BENTONITE/EARTH ANTI-SEEP COLLAR
SCALE: 3/4" = 1'-0"



48" RCP DROP INLET PIPE INSTALLATION DETAIL
N.T.S.



DETAIL C21
FLEXIBLE ANTI-SEEP COLLAR (NOTE 1)



DETAIL D21
EMERGENCY SPILLWAY
SCALE: 1" = 5'

REV	DATE	BY	CHKD	APPD	ISSD	DESCRIPTION
R 0	02/08	JTS	SAH	JTS	HLP	BAK
INITIAL ISSUE, FOR W.D. KIT. 00-200003-000 RG						
REV	DATE	BY	CHKD	APPD	ISSD	DESCRIPTION
SCALE: 1" = 200'						
EXCEPT AS NOTED						
YARD						
FGD GYPSUM DISPOSAL FACILITY DRAINAGE SYSTEM DETAILS SHEET 1 OF 2						
DESIGNED BY:	DRAWN BY:	CHECKED BY:	SUPERVISED BY:	REVIEWED BY:	APPROVED BY:	ISSUED BY:
J.T. STEIN	S.A. HAMBY	J.T. STEIN	[Signature]	[Signature]	[Signature]	[Signature]
KINGSTON FOSSIL PLANT TENNESSEE VALLEY AUTHORITY FOSSIL AND HYDRO ENGINEERING						
AUTOCAD PLOT	DATE	SHEET	PROJECT	SCALE	PLANT	REV
02/08	36	C	10W428-21	R 0		