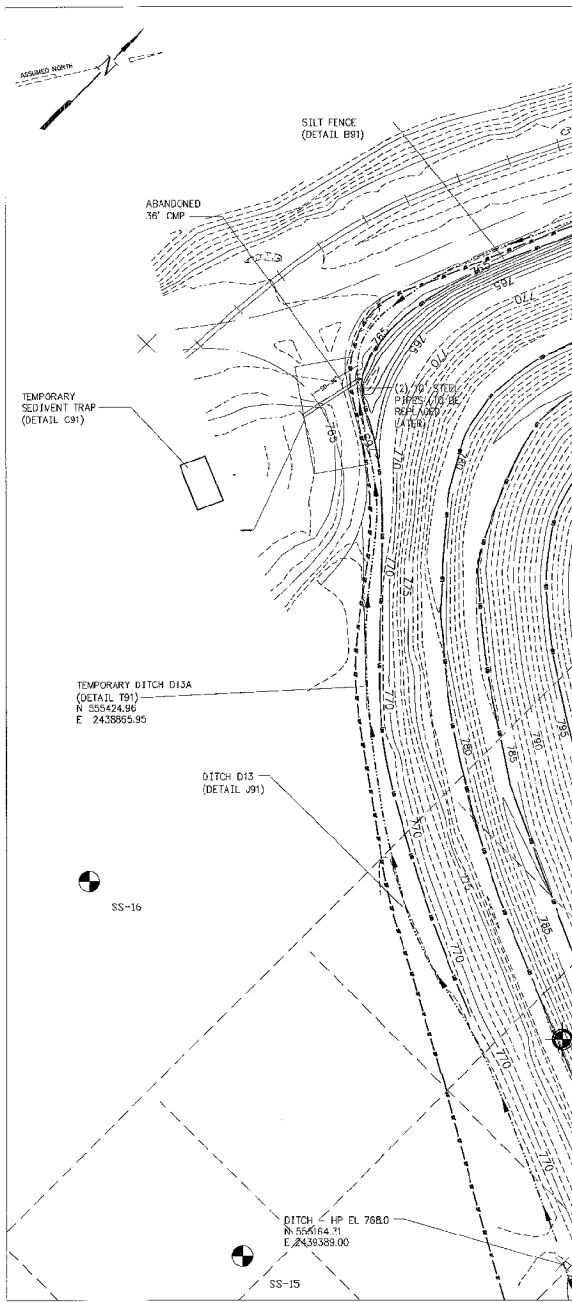
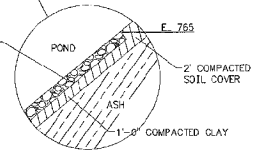
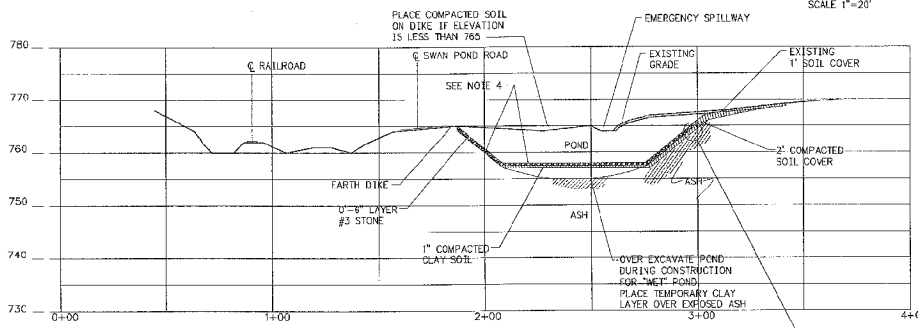
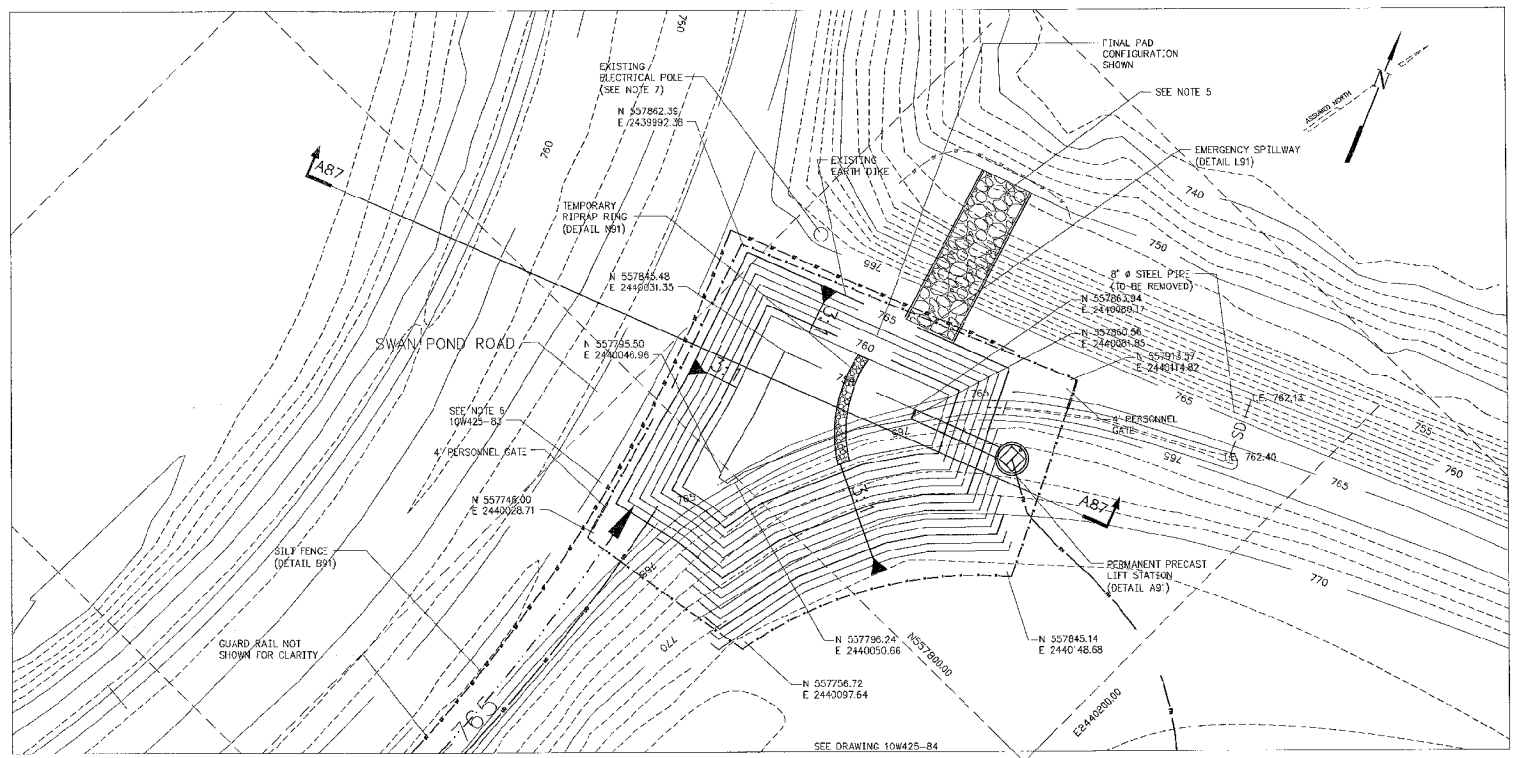


A  
B  
C  
D  
E  
F  
G  
H



MATCHLINE A, SEE DRAWING 10W425-83



- NOTES:
1. AT THE END OF CONSTRUCTION, REMOVE RIPRAP RING.
  2. REMOVE ACCUMULATED SEDIMENT WHEN LEVEL EXCEEDS THE SEDIMENT CLEANOUT LEVEL SHOWN ON DETAIL E91.
  3. REMOVE ACCUMULATED SEDIMENT IN POND AT THE END OF CONSTRUCTION.
  4. PLACE CLAY LINER AND RIPRAP LINING IN POND AT THE END OF CONSTRUCTION.
  5. RIPRAP PLACED ON SLOPE SHALL BE UNDERLAIN WITH GEOTEXTILE, AND HAND PLACED, TO PREVENT ROCK FROM BEING PLACED INTO SWAN POND EMBAYMENT.
  6. STRIP OR CUT VEGETATION PRIOR TO INSTALLING EMERGENCY SPILLWAY.
  7. EXISTING UNDERGROUND UTILITIES ARE NOT SHOWN. CONSTRUCTOR SHALL TEMPORARILY REROUTE UNDERGROUND UTILITIES TO THE EXISTING SUMP AND PERMANENTLY REROUTE UTILITY TO NEXTEL TOWER (IF REQUIRED) TO CONSTRUCT POND. FOLLOW PROPER LOCKOUT/TAGOUT PROCEDURES.

SCALE: AS SHOWN EXCEPT AS NOTED									
YARD									
DREDGE CELL									
DIKE RESTORATION									
PLANS & SECTION - SHEET 5									
DESIGNED BY:	DRAWN BY:	CHECKED BY:	APPROVED BY:	ISSUED BY:	TESTED BY:				
KINGSTON FOSSIL PLANT									
TENNESSEE VALLEY AUTHORITY									
FOSSIL AND HYDRO ENGINEERING									
AUTOCAD #2010	DATE	36	C	10W425-87	R				