

A

B

C

D

E

F

G

H

A

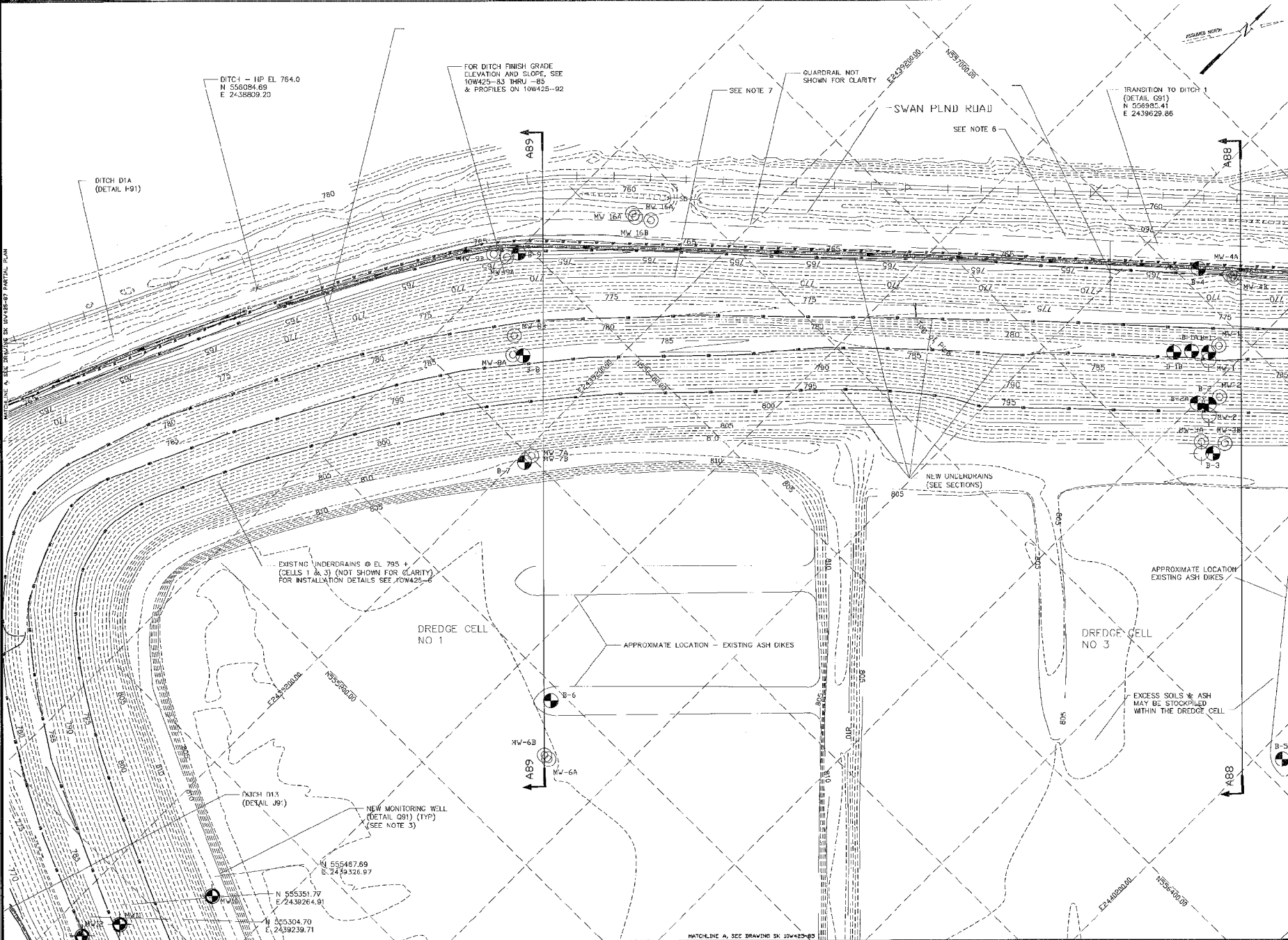
B

C

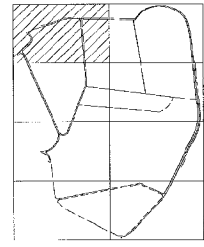
D

E

F



- NOTES:
1. FOR PERMIT MINOR MODIFICATION DRAWING INDEX AND LEGEND, SEE DRAWING 10W425-81. FOR GENERAL NOTES, SEE 10W425-20.
 2. ALL WORK SHALL COMPLY WITH THE APPROVED STORMWATER POLLUTION PREVENTION PLAN & CONSTRUCTION STORMWATER PERMIT.
 3. WELLS SHALL BE INSTALLED AFTER UNDERDRAINS, AND PRIOR TO RESUMPTION OF DREDGING ACTIVITIES. VERIFY THAT WELL LOCATIONS DO NOT INTERFERE WITH UNDERDRAINS AND LATERALS.
 4. NOT USED.
 5. REPORT IMMEDIATELY TO TVA IF ANY SIGNS OF SEEPAGE THRU THE DIKE, OR IF SATURATED GROUND CONDITIONS SUDDENLY EXIST.
 6. NOTIFY TENNESSEE ONE CALL (800) 251-1111 PRIOR TO PERFORMING ANY EXCAVATION ADJACENT TO SWAN POND ROAD.
 7. EXISTING CONTOURS ON SLOPE OF EXISTING DREDGE CELL (BELOW EL. 810) HAVE AN EXISTING 1' SOIL COVER LAYER.
 8. USE CAUTION DURING DITCH CONSTRUCTION AROUND MONITORING WELLS 4A, 4B, 9A AND 9B.



REV	DATE	BY	CHK	APP	DESCRIPTION

SCALE: 1" = 100' EXCEPT AS NOTED

YARD

**DREDGE CELL
DIKE RESTORATION
PLAN - SHEET 1**

DESIGNED BY:	DRAWN BY:	CHECKED BY:	SUPERVISED BY:	REVIEWED BY:	APPROVED BY:	DATE:

KINGSTON FOSSIL PLANT
TENNESSEE VALLEY AUTHORITY
FOSSIL AND HYDRO ENGINEERING

AUTOCAD R2000 36 C 10W425-83 R 0