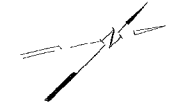
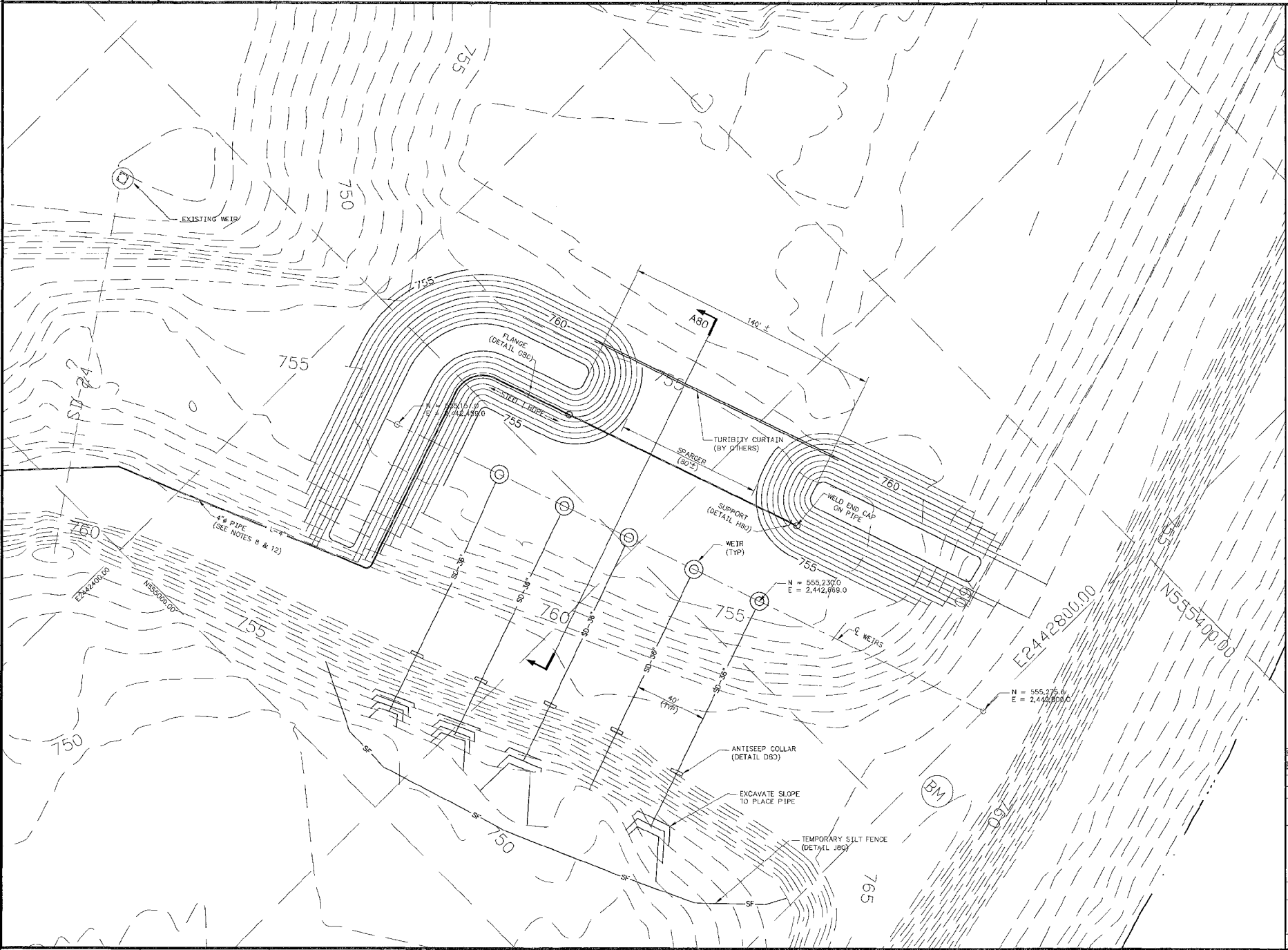


A
B
C
D
E
F
G
H



- NOTES:
- FOR WEIR REPLACEMENT GENERAL NOTES, SEE 10W425-77.
 - REMOVE EXISTING LIME SLUDGE DISCHARGE LINE WHERE IT IS ROUTED FROM THE BANK TO THE EXISTING WEIR. PIPE MAY BE REUSED AT CONSTRUCTOR'S OPTION, OR A NEW PIPE USED TO REROUTE THE LIME SLUDGE DISCHARGE LINE TO THE NEW WEIRS. NEW PIPE SHALL BE STEEL PIPE TO MATCH DIAMETER AND WALL THICKNESS OF EXISTING. BUTT WELD OR USE FLANGE CONNECTION TO SPLICE THE PIPE TOGETHER WHERE IT IS REROUTED TO THE NEW WEIR. INSTALL LIME SLUDGE DISCHARGE LINE TO THE NEW WEIRS AS SHOWN.
 - WHERE DISCHARGE PIPE IS TO BE SURMERGED, PIPING SHALL BE HDPE. SDR 11. WELD A STEEL FLANGE ADAPTOR TO THE FABRICATED AS A SPARGER. SEE DETAILS ON 10W425-80.
 - AFTER COMPLETION OF WEIR INSTALLATION, EXCAVATE THE CENTER SECTION FROM THE DIKE AS SHOWN, TO ALLOW THE ASH POND TO DISCHARGE TO THE STILLING BASIN.
 - REMOVE SECTIONS OF DISCHARGE FROM EXISTING WEIRS, AND TREMIE GROUT AS DISCUSSED IN NOTE 3 ON 10W425-77.
 - PIPE AND FITTING USED TO CONSTRUCT HDPE LIME SLUDGE DISCHARGE PIPING SHALL BE HIGH-DENSITY POLYETHYLENE (HDPE) PE 3408 PIPE. CELL CLASSIFICATIONS 345444C IN ACCORDANCE WITH ASTM D 3350. ALL PIPING AND FITTINGS SHALL BE NEW MATERIAL AND BE INSTALLED IN ACCORDANCE WITH THE MANUFACTURER'S INSTRUCTIONS.
 - ALL HDPE PIPING AND FITTINGS SHALL BE JOINED BY BUTT FUSION WELDING, IN ACCORDANCE WITH THE MANUFACTURER'S INSTRUCTIONS.
 - PROVIDE MINIMUM 0.5% SLOPE ON LIME SLURRY PIPE.
 - INSTALL WEIR AT EL 760 AS SHOWN. WEIR WILL BE LOWERED TO EL 758 PRIOR TO GYPSUM/ASH DISPOSAL FACILITY CONSTRUCTION.
 - PROTECT EXCAVATIONS BY SHORING, BRACINGS, SHEET PILING, OR OTHER METHODS AS REQUIRED TO PREVENT CAVE-IN OF LOOSE SOIL INTO EXCAVATION IN ACCORDANCE WITH OSHA 29 CFR 1926, SUBPART P - EXCAVATION.
 - PRIOR TO REMOVING INSULATION FROM EXISTING LIME SLURRY DISCHARGE PIPE, DETERMINE WHETHER INSULATION CONTAINS ASBESTOS. CONTACT KIP ENVIRONMENTAL PROGRAM ADMINISTRATOR PAE) (LINDA CAMPBELL) PRIOR TO REMOVING INSULATION. REMOVE INSULATION IN ACCORDANCE WITH OSHA REQUIREMENTS. IF IT CONTAINS ASBESTOS, DISPOSE OF ASBESTOS-CONTAINING MATERIALS IN ACCORDANCE WITH STAT OF TENNESSEE SOLID WASTE REQUIREMENTS.
 - SPACE SUPPORTS FOR 4" LIME SLURRY PIPING ON 10' CENTER TO CENTER. SEE PIPE SUPPORT DETAIL 180 ON 10W425-80.

NO.	DATE	BY	DESCRIPTION
1	07/13/20	RE, PURKLEY	INITIAL ISSUE PER ECA KIP-05-1074-005-R0
2			
3			
4			
5			
6			
7			
8			
9			
10			
11			
12			

SCALE: 1" = 20' EXCEPT AS NOTED

YARD

DREDGE CELL
WEIR REPLACEMENT
FINAL DIKE & WEIR LAYOUT

DESIGNED BY	DRAWN BY	CHECKED BY	APPROVED BY	ISSUED BY
RE, PURKLEY	D.L. DOUGAN	RE, PURKLEY	L.A. PETERSON	D.L. LINDY

KINGSTON FOSSIL PLANT
TENNESSEE VALLEY AUTHORITY
FOSSIL AND HYDRO ENGINEERING

AUTOCAD R14 36 C 10W425-79 R 0