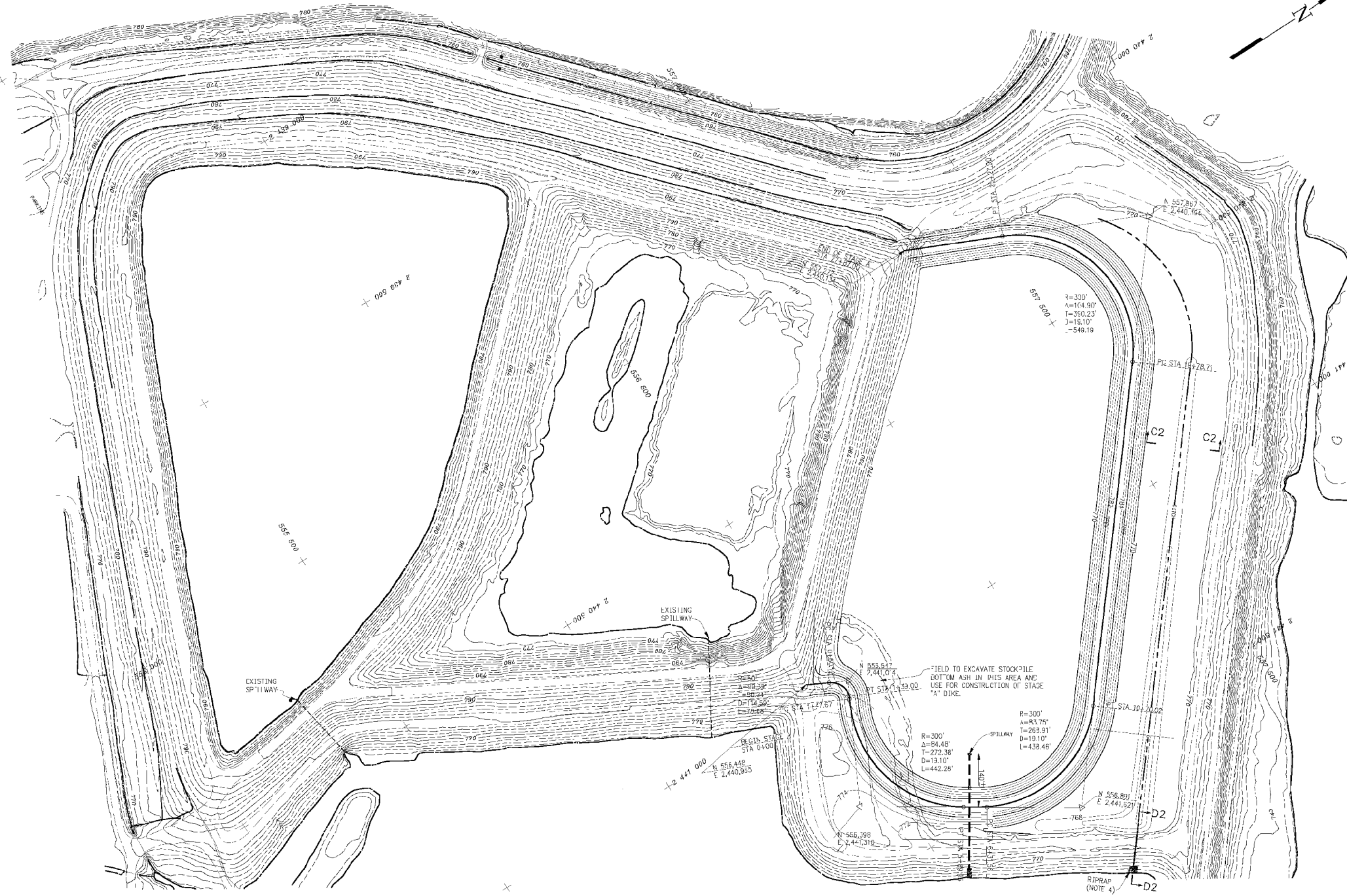


- NOTES:
1. ALL WORK SHALL BE DONE IN ACCORDANCE WITH THE "GENERAL CONSTRUCTION SPECIFICATIONS AND THE CLOSURE / POST-CLOSURE PLAN - ASH POND AREA - TVA KINGSTON FOSSIL PLANT", UNLESS OTHERWISE NOTED. SECTION NUMBERS REFER DIRECTLY TO THE T-1 SPECIFICATION.
 2. COORDINATES SHOWN ARE TENNESSEE STATE COORDINATES.
 3. DASHED CONTOURS INDICATE EXISTING GROUND. SOLID CONTOURS INDICATE FINISHED GRADING.
 4. RIPRAP SHALL BE 18 INCHES (1.5 FT) MINIMUM DIAMETER, BY WEIGHT, OF THE STONES SHALL BE 100 LB. EACH AND IN ACCORDANCE WITH SECTION 575.
 5. FACTOR OF SAFETY FOR STATIC CONDITIONS IS 1.75 OR GREATER.
 6. WHEN CONNECTING THE ENDS OF THE NEW DIKE TO THE EXISTING DIKE, EXTREME CARE SHALL BE USED TO ENSURE AN IMPERVIOUS AND STABLE CONNECTION. THE EXISTING DIKE SHALL BE BENCHED AND SCARIFIED TO A MINIMUM D-PITCH OF 6 INCHES AND THEN COMPACTED WITH THE NEW FILL TO FORM A BOND. THE UTMOST CAUTION SHALL BE USED IN REACHING THE EXISTING DIKE SLOPES SO AS NOT TO CREATE AN UNSTABLE CONDITION.
 7. TOP OF DIKE MUST BE MAINTAINED A MINIMUM OF 4' ABOVE THE ELEVATION OF THE WATER IN THE DISPOSAL AREA.



R	BKE	GEL	HLP	HLM	KWB	RGJ	WDH	KIPK	W	
INITIAL	ISSUE	DATE	PROJ	NO	REV	BY	CHKD	APPD	SCALE	
SCALE: 1" = 100'									FXCPT AS NOTED	
YARD										
DREDGE CELLS EXISTING CONTOURS AND STAGE A PLAN										
DESIGNED BY	DRAWN BY	CHECKED BY	SCALE BY	FORWARD BY	APPROVED BY	DATE				
R.K.FIDOR	S.C.LAWSON	H.J.PETTY	H.J.PETTY	K.W.BUENFITT	R.G.OHNSON	W.D.HALL				
KINGSTON FOSSIL PLANT TENNESSEE VALLEY AUTHORITY FOSSIL AND HYDRO ENGINEERING										
ALTCOD R12	36	C	10W425-1				R 0			