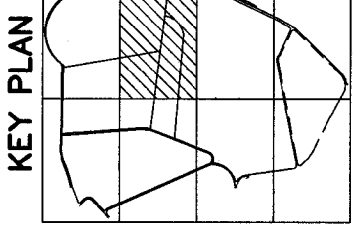


NOTES:
 1. FOR GENERAL NOTES SEE 10W425-26.
 2. FOR DIKE RAISING NOTES, SEE 10W425-49.
 3. FOR DESCRIPTION OF COMBINED GYPSUM AND ASH DISPOSAL, SEE OPERATIONS PLAN. FOR DESCRIPTION OF ASH DISPOSAL ONLY, SEE OPERATIONS PLAN.
 4. FOR DITCH DETAILS, SEE 10W425-76.

EMORY RIVER-WATTS BAR LAKE
 100 YEAR FLOOD ELEVATION 748 AT RIVER MILE 2.00
 500 YEAR FLOOD ELEVATION 750.5 AT RIVER MILE 2.00



DATE	BY	CHKD	APP'D	SCALE	EXCEPT AS NOTED
10/1/80	J. G. ADAMS	J. G. ADAMS	J. G. ADAMS	1"=50'	

DREDGE CELL LATERAL EXPANSION
STAGE 4
SHEET 4 (840-870)

DESIGNED BY: W. TAYLOR
 CHECKED BY: E. L. PERRY
 SUPERVISOR: J. G. ADAMS

KINGSTON FOSSIL PLANT
 TENNESSEE VALLEY AUTHORITY
 FOSSIL AND HYDRO ENGINEERING

AUTOCAD R14 SHEET NO. 36 OF 36 PLOT FACTOR: 600
 W_TVA 10W425-51 R.O.
 C.A.D. DRAWING DO NOT ALTER MANUALLY

36 C 10W425-51

TASK COMPLETED BY: PARSONS
 REV. NO. 0

36 C 10W425-52

11 12

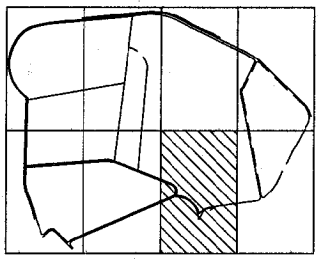
A B C D E F

NOTES:
1. FOR GENERAL NOTES SEE 10W425-28.
2. FOR DIKE RAISING NOTES, SEE 10W425-48.

EMORY RIVER-WATTS BAR LAKE
100 YEAR FLOOD ELEVATION 748 AT RIVER MILE 2.00
500 YEAR FLOOD ELEVATION 750.5 AT RIVER MILE 2.00

MATCHLINE A, SEE DRAWING 10W425-33

KEY PLAN



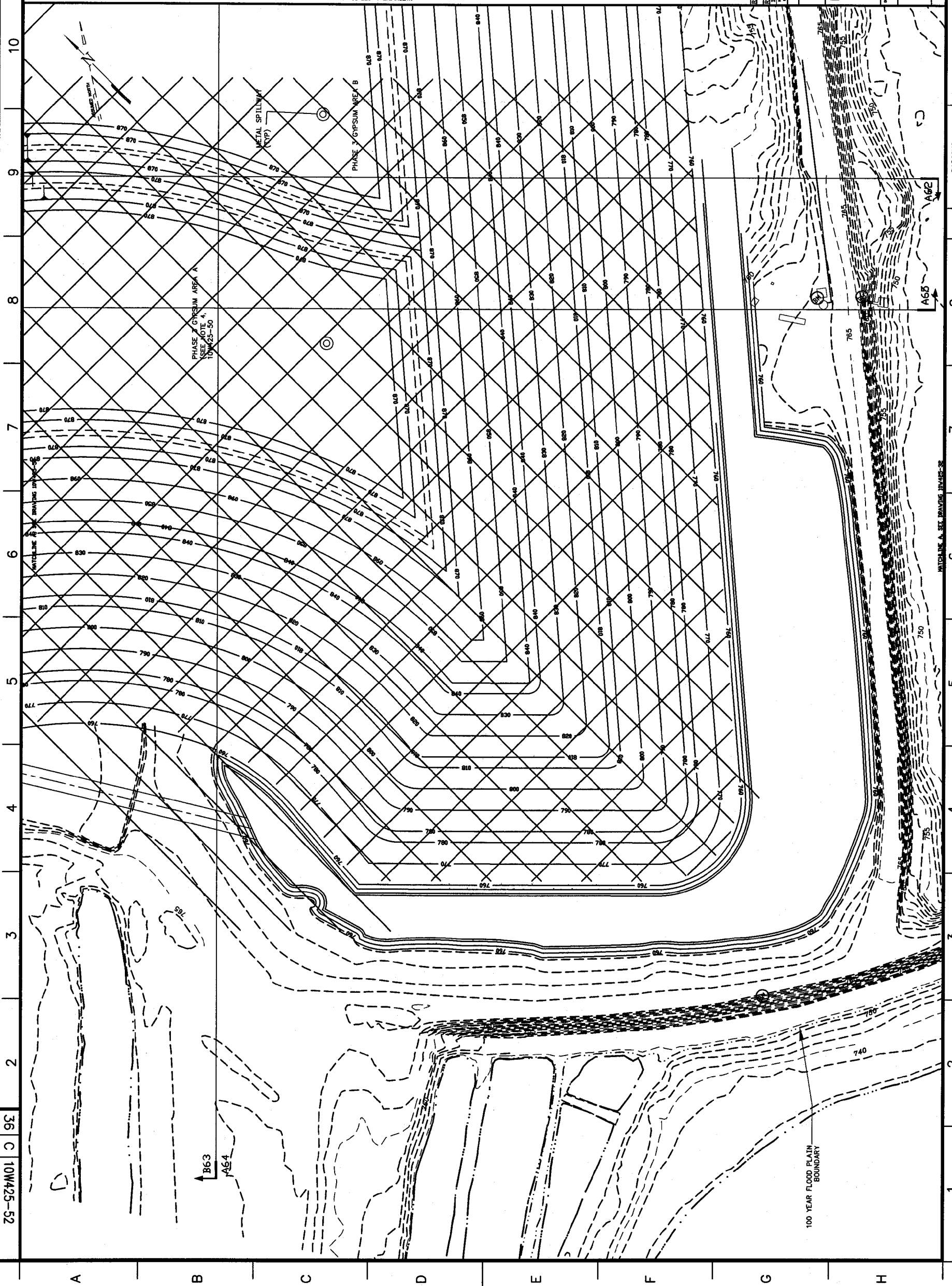
DATE	ISSUED FOR	BY	DATE	ISSUED FOR	BY	DATE	ISSUED FOR	BY
10/1/00	FOR DREDGE CELL EXPANSION PH2	D.R. SMITH	10/1/00	FOR DREDGE CELL EXPANSION PH2	D.R. SMITH	10/1/00	FOR DREDGE CELL EXPANSION PH2	D.R. SMITH

SCALE: 1"=50'
YARD
EXCEPT AS NOTED

DREDGE CELL LATERAL EXPANSION
STAGE 4
SHEET 5

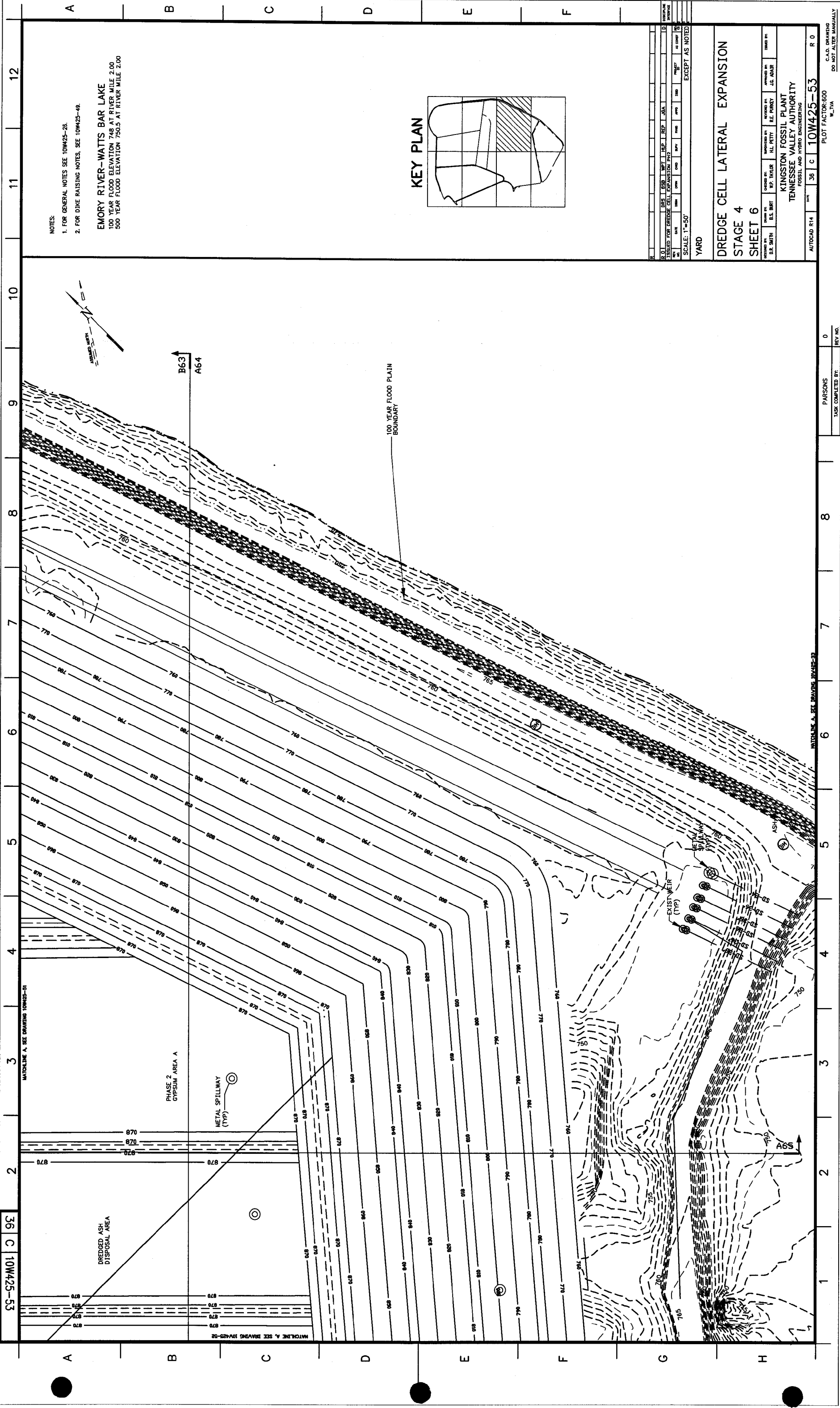
DESIGNED BY: D.R. SMITH
CHECKED BY: B.S. BART
APPROVED BY: B.E. PURNEY, J.G. ADAIR
KINGSTON FOSSIL PLANT
TENNESSEE VALLEY AUTHORITY
FOSSIL AND HYDRO ENGINEERING

AUTOCAD R14
DATE: 10/1/00
PLOT FACTOR: 600
W_TVA
R.O.



PARSONS
TASK COMPLETED BY: 0
REV. NO.

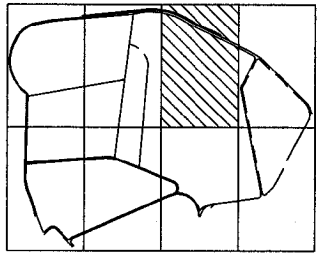
MATCHLINE A, SEE DRAWING 10W425-32



NOTES:
 1. FOR GENERAL NOTES SEE 10W425-28.
 2. FOR DYKE RAISING NOTES, SEE 10W425-49.

EMORY RIVER-WATTS BAR LAKE
 100 YEAR FLOOD ELEVATION 748 AT RIVER MILE 2.00
 500 YEAR FLOOD ELEVATION 750.5 AT RIVER MILE 2.00

KEY PLAN



NO.	DATE	BY	CHKD.	APP'D.	REVISION
1	08/11/93	J.P. TAYLOR	H.L. PERRY	J.C. ADAR	ISSUED FOR DREDGE CELL EXPANSION PROJECT
2	08/11/93	J.P. TAYLOR	H.L. PERRY	J.C. ADAR	AS NOTED

SCALE: 1"=50'
 YARD
 EXCEPT AS NOTED

DREDGE CELL LATERAL EXPANSION
STAGE 4
SHEET 6

KINGSTON FOSSIL PLANT
 TENNESSEE VALLEY AUTHORITY
 FOSSIL AND HYDRO ENGINEERING

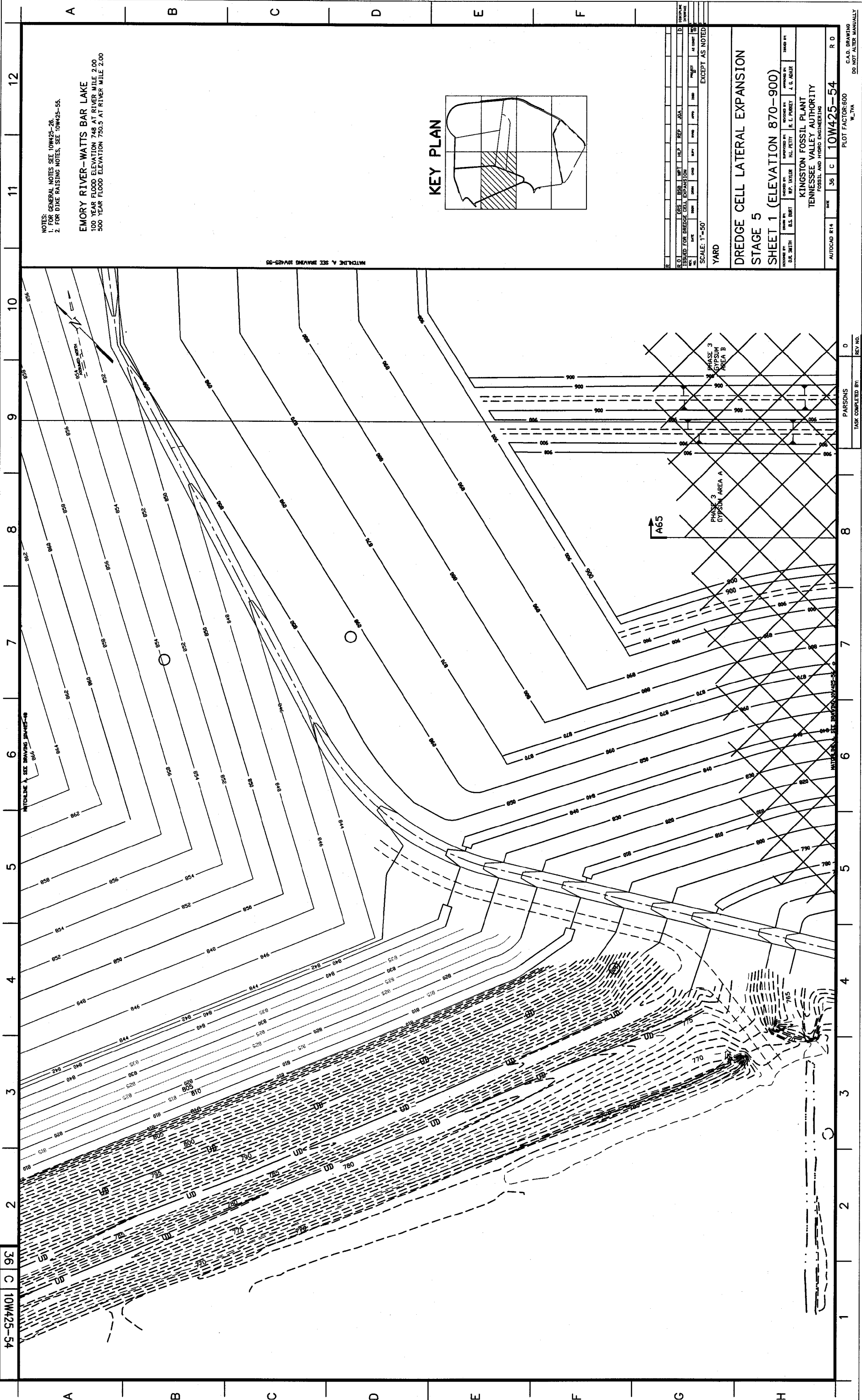
AUTOCAD R14 DATE 08/11/93 36 C 10W425-53 R 0
 PLOT FACTOR: 600 W.TVA
 U.S. DRAWING DO NOT ALTER MANUALLY

55-527M01 C 93

MATCHLINE A, SEE DRAWING 10W425-52

MATCHLINE A, SEE DRAWING 10W425-51

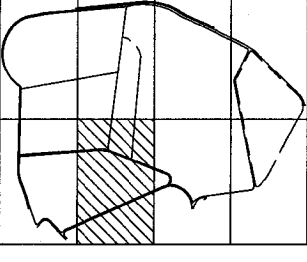
TASK COMPLETED BY: PARSONS
 REV. NO. 0



NOTES:
 1. FOR GENERAL NOTES SEE 10W425-26.
 2. FOR DIME RAISING NOTES, SEE 10W425-55.

EMORY RIVER-WATTS BAR LAKE
 100 YEAR FLOOD ELEVATION 748 AT RIVER MILE 2.00
 500 YEAR FLOOD ELEVATION 750.5 AT RIVER MILE 2.00

KEY PLAN



NO.	DATE	BY	CHKD	APPD	REMARKS
1	08/11/50	W.F. TAYLOR	H.L. PETTY	R. E. PARKER	ISSUED FOR DREDGE CELL EXPANSION
2	08/11/50	W.F. TAYLOR	H.L. PETTY	R. E. PARKER	AS CORRECTED

SCALE: 1"=50'
 YARD
 EXCEPT AS NOTED

DREDGE CELL LATERAL EXPANSION
 STAGE 5
 SHEET 1 (ELEVATION 870-900)

DESIGNED BY	W.F. TAYLOR	CHECKED BY	H.L. PETTY	APPROVED BY	R. E. PARKER
DRAWN BY	D.L. SMITH	REVISIONS BY	J. S. ADAMS	DATE	
KINGSTON FOSSIL PLANT TENNESSEE VALLEY AUTHORITY FOSSIL AND HYDRO ENGINEERING					
AUTOCAD R14	DATE	3/6	C	10W425-54	R.D.
PLOT FACTOR: 600 W.TVA C.A.D. DRAWING DO NOT ALTER MANUALLY					

36 C 10W425-54

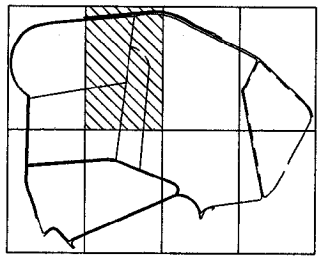
TASK COMPLETED BY: PARSONS
 REV. NO. 0

36 C 10W425-55

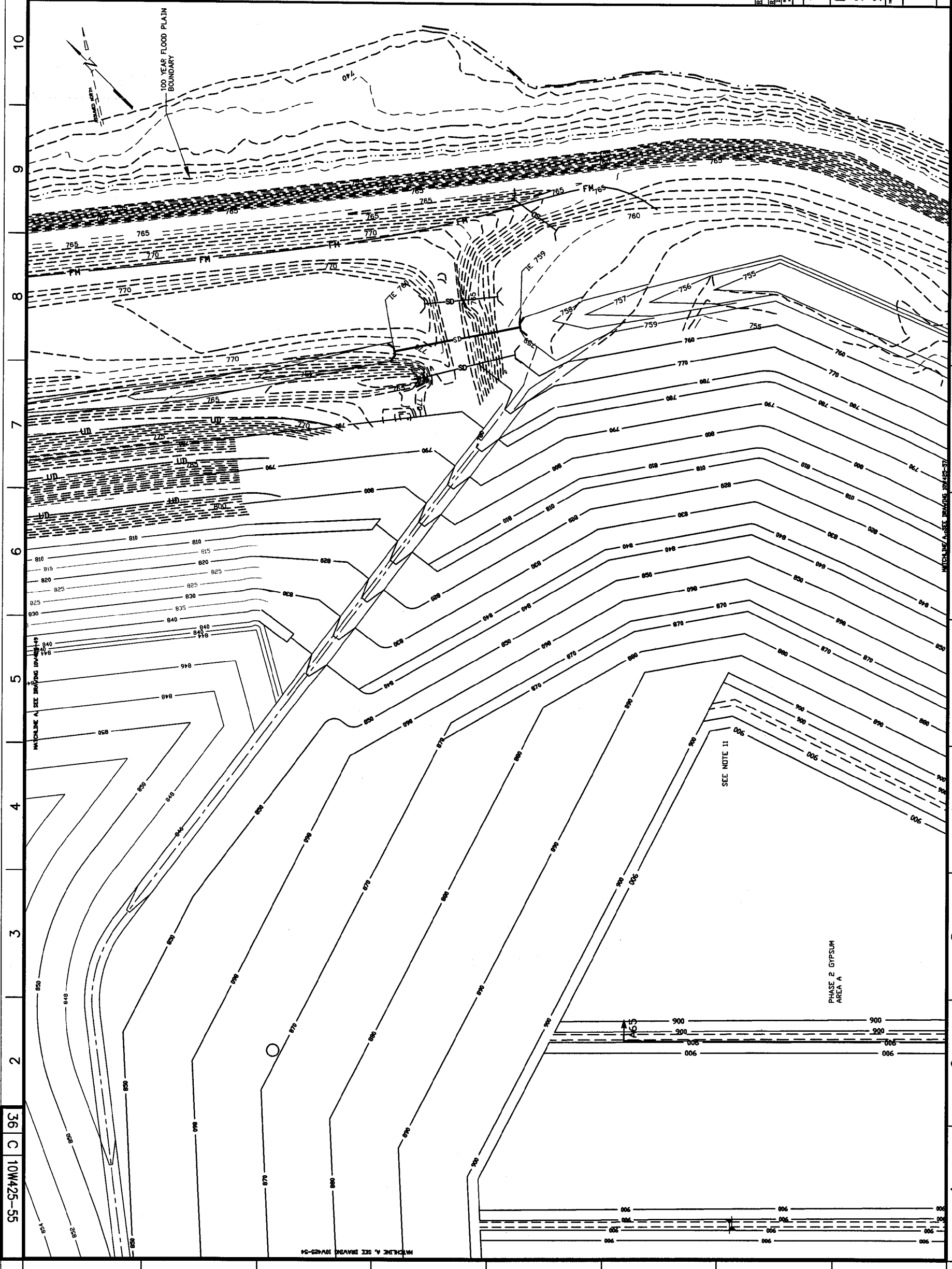
- NOTES:
1. FOR DRAWING INDEX AND LEGEND, SEE DRAWING 10W425-20.
 2. FOR GENERAL NOTES SEE 10W425-26.
 3. PROVIDE A MINIMUM OF TWO (2) FEET OF FREEBOARD TO THE FINISHED DIKE ELEVATION DURING ASH DREDGING/ GYPSUM PLACEMENT ACTIVITIES TO THE EXISTING METAL SPILLWAYS FOR PREVIOUS STAGE AS SHOWN ON 10W425-26.
 4. PROPOSED CONTOUR ELEVATIONS SHOWN FOR THE OUTER 3:1 SLOPES ARE FINISHED SURFACE ELEVATIONS (INCLUDING FINAL COVER).
 5. FINAL CLOSURE GRADE WILL BE PLACED AT TWO (2) FEET PLUS OR MINUS OF THE ACTUAL GRADE SHOWN.
 6. MAXIMUM SLOPE SHALL BE 3:1 (HORIZONTAL TO VERTICAL).
 7. FOR CONSTRUCTION OF AND RAISING OF DIKES, SEE DETAIL A69 ON SHEET 10W425-26.
 8. PREPARED WITHIN THE OUTER WET-CAST GYPSUM DIKES ARE NOT SHOWN ON THESE DRAWINGS. SEE DETAILS ON DRAWING 10W425-26.
 9. RIM DITCH ELEVATIONS ARE NOT SHOWN. IN GENERAL, RIM DITCH ELEVATIONS WILL BE LOWER THAN DIKE ELEVATION, WITH A NOMINAL 0.5% SLOPE.
 10. DREDGED FLY ASH AREA WITHIN PHASE 2 WILL NOT EXIST ABOVE EL. 870. SEE OPERATION PLAN FOR ASH STACKING FOR COMBINED GYPSUM/ASH AND FLY ASH ONLY.

EMORY RIVER-WATTS BAR LAKE
 100 YEAR FLOOD ELEVATION 748 AT RIVER MILE 2.00
 500 YEAR FLOOD ELEVATION 750.5 AT RIVER MILE 2.00

KEY PLAN



DATE	BY	CHKD	APPD	SCALE	AS NOTED
10/15/00	J. E. FURRY	J. E. FURRY	J. E. FURRY	1"=50'	EXCEPT AS NOTED
YARD					
DREDGE CELL LATERAL EXPANSION					
STAGE 5					
SHEET 2 (ELEVATION 870-900)					
KINGSTON FOSSIL PLANT					
TENNESSEE VALLEY AUTHORITY					
FOSSIL AND HYDRO ENGINEERING					
AUTOCAD R14	DATE	36	C	10W425-55	R 0



PARSONS
 TASK COMPLETED BY: 0
 REV. NO. 0
 C.A.D. DRAWING
 DO NOT ALTER MANUALLY

95-57401 C 95

12 11 10 9 8 7 6 5 4 3 2 1

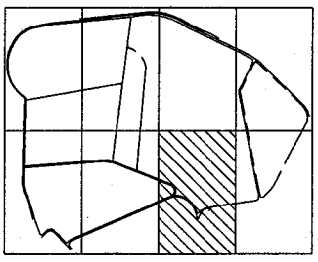
A B C D E F G H

NOTES:
1. GENERAL NOTES SEE 10W425-25
2. FOR DIME RAISING NOTES SEE 10W425-35.
3. WIDEN RIM DITCH AT CORNERS.

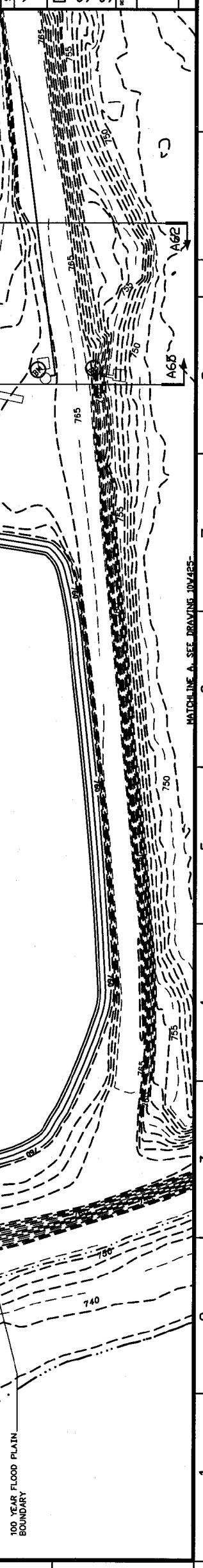
EMORY RIVER-WATTS BAR LAKE
100 YEAR FLOOD ELEVATION 748 AT RIVER MILE 2.00
500 YEAR FLOOD ELEVATION 750.5 AT RIVER MILE 2.00

MATCHLINE A, SEE DRAWING 10W425-57

KEY PLAN



100 YEAR FLOOD PLAIN
BOUNDARY



SCALE: 1"=50'

YARD

DREDGE CELL LATERAL EXPANSION
STAGE 5
SHEET 3

DESIGNED BY	D.E. SMITH	CHECKED BY	E.S. BART	APPROVED BY	J.G. ADUR
DRAWN BY	E.S. BART	REVIEWED BY	R.E. PERRY	APPROVED BY	J.G. ADUR
PROJECT NO.	10W425-56	SHEET NO.	3	TITLE	DREDGE CELL LATERAL EXPANSION
DATE		SCALE	1"=50'	EXCEPT AS NOTED	

KINGSTON FOSSIL PLANT
TENNESSEE VALLEY AUTHORITY
FOSSIL AND HYDRO ENGINEERING

AUTOCAD R14
PLOT FACTOR: 600
W_L_TVA

PARSONS
TASK COMPLETED BY: 0
REV. NO.

0

8

7

6

5

4

3

2

1

0

REV. NO.

0

PARSONS

TASK COMPLETED BY: 0

REV. NO.

0

PARSONS

TASK COMPLETED BY: 0

REV. NO.

0

PARSONS

TASK COMPLETED BY: 0

REV. NO.

0

PARSONS

TASK COMPLETED BY: 0

REV. NO.

0

PARSONS

TASK COMPLETED BY: 0

REV. NO.

0

PARSONS

TASK COMPLETED BY: 0

REV. NO.

0

PARSONS

TASK COMPLETED BY: 0

REV. NO.

0

PARSONS

TASK COMPLETED BY: 0

REV. NO.

0

PARSONS

TASK COMPLETED BY: 0

REV. NO.

0

PARSONS

TASK COMPLETED BY: 0

REV. NO.

0

PARSONS

TASK COMPLETED BY: 0

REV. NO.

0

PARSONS

TASK COMPLETED BY: 0

REV. NO.

0

PARSONS

TASK COMPLETED BY: 0

REV. NO.

0

PARSONS

TASK COMPLETED BY: 0

REV. NO.

0

PARSONS

TASK COMPLETED BY: 0

REV. NO.

0

PARSONS

TASK COMPLETED BY: 0

REV. NO.

0

PARSONS

TASK COMPLETED BY: 0

REV. NO.

0

PARSONS

TASK COMPLETED BY: 0

REV. NO.

0

PARSONS

TASK COMPLETED BY: 0

REV. NO.

0

PARSONS

TASK COMPLETED BY: 0

REV. NO.

0

PARSONS

TASK COMPLETED BY: 0

REV. NO.

0

PARSONS

TASK COMPLETED BY: 0

REV. NO.

0

PARSONS

TASK COMPLETED BY: 0

REV. NO.

0

PARSONS

TASK COMPLETED BY: 0

REV. NO.

0

PARSONS

TASK COMPLETED BY: 0

REV. NO.

0

PARSONS

TASK COMPLETED BY: 0

REV. NO.

0

PARSONS

TASK COMPLETED BY: 0

REV. NO.

0

PARSONS

TASK COMPLETED BY: 0

REV. NO.

0

PARSONS

TASK COMPLETED BY: 0

REV. NO.

0

PARSONS

TASK COMPLETED BY: 0

REV. NO.

0

PARSONS

TASK COMPLETED BY: 0

REV. NO.

0

PARSONS

TASK COMPLETED BY: 0

REV. NO.

0

PARSONS

TASK COMPLETED BY: 0

REV. NO.

0

PARSONS

TASK COMPLETED BY: 0

REV. NO.

0

PARSONS

TASK COMPLETED BY: 0

REV. NO.

0

PARSONS

TASK COMPLETED BY: 0

REV. NO.

0

PARSONS

TASK COMPLETED BY: 0

REV. NO.

0

PARSONS

TASK COMPLETED BY: 0

REV. NO.

0

PARSONS

TASK COMPLETED BY: 0

REV. NO.

0

PARSONS

TASK COMPLETED BY: 0

REV. NO.

0

PARSONS

TASK COMPLETED BY: 0

REV. NO.

0

PARSONS

TASK COMPLETED BY: 0

REV. NO.

0

PARSONS

TASK COMPLETED BY: 0

REV. NO.

0

PARSONS

TASK COMPLETED BY: 0

REV. NO.

0

PARSONS

TASK COMPLETED BY: 0

REV. NO.

0

PARSONS

TASK COMPLETED BY: 0

REV. NO.

0

PARSONS

TASK COMPLETED BY: 0

REV. NO.

0

PARSONS

TASK COMPLETED BY: 0

REV. NO.

0

PARSONS

TASK COMPLETED BY: 0

REV. NO.

0

PARSONS

TASK COMPLETED BY: 0

REV. NO.

0

PARSONS

TASK COMPLETED BY: 0

REV. NO.

0

PARSONS

TASK COMPLETED BY: 0

REV. NO.

0

PARSONS

TASK COMPLETED BY: 0

REV. NO.

0

PARSONS

TASK COMPLETED BY: 0

REV. NO.

0

PARSONS

TASK COMPLETED BY: 0

REV. NO.

0

PARSONS

TASK COMPLETED BY: 0

REV. NO.

0

PARSONS

TASK COMPLETED BY: 0

REV. NO.

0

PARSONS

TASK COMPLETED BY: 0

REV. NO.

0

PARSONS

TASK COMPLETED BY: 0

REV. NO.

0

PARSONS

TASK COMPLETED BY: 0

REV. NO.

0

PARSONS

TASK COMPLETED BY: 0

REV. NO.

0

PARSONS

TASK COMPLETED BY: 0

REV. NO.

0

PARSONS

TASK COMPLETED BY: 0

REV. NO.

0

PARSONS

TASK COMPLETED BY: 0

REV. NO.

0

PARSONS

TASK COMPLETED BY: 0

REV. NO.

0

PARSONS

TASK COMPLETED BY: 0

REV. NO.

0

PARSONS

TASK COMPLETED BY: 0

REV. NO.

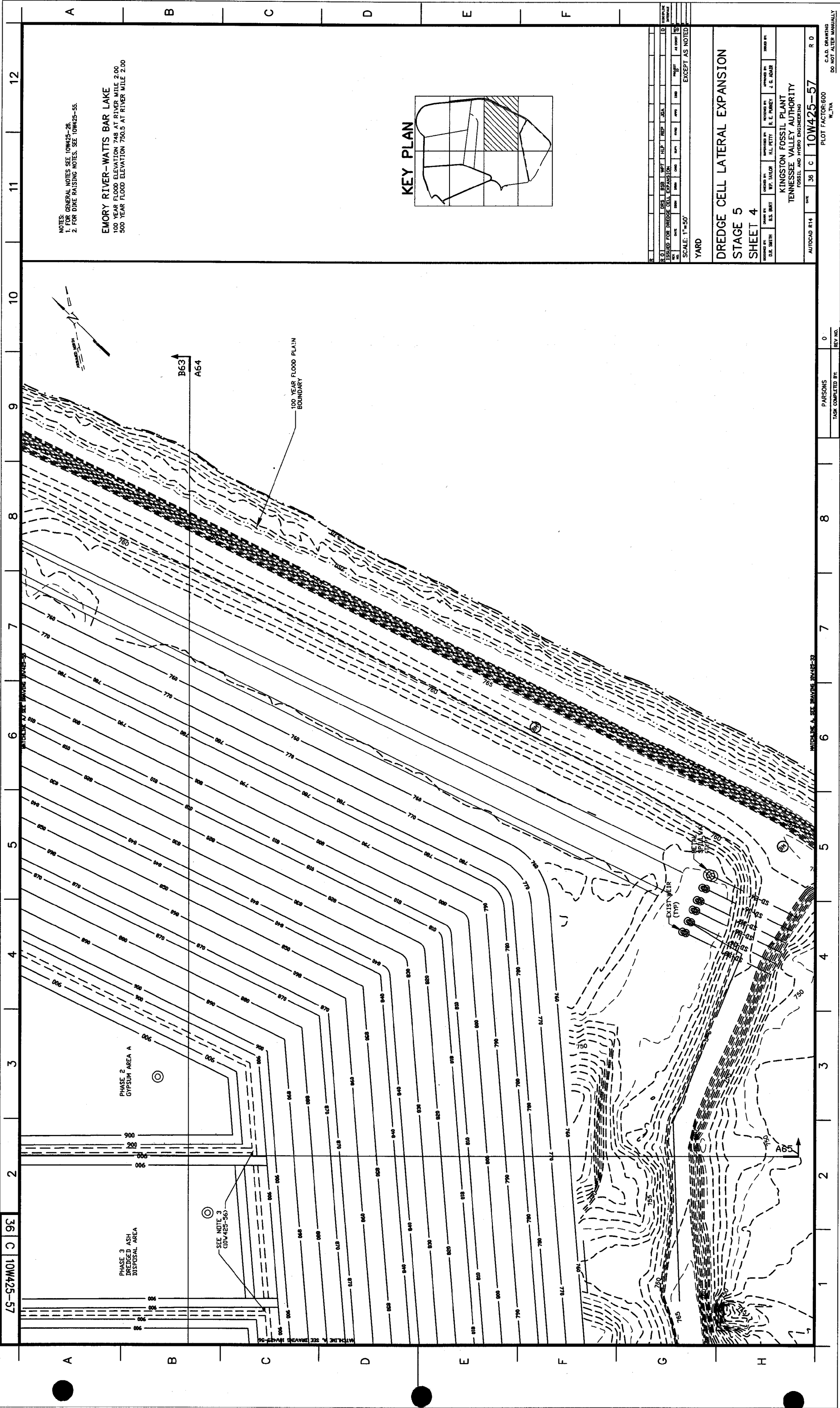
0

PARSONS

TASK COMPLETED BY: 0

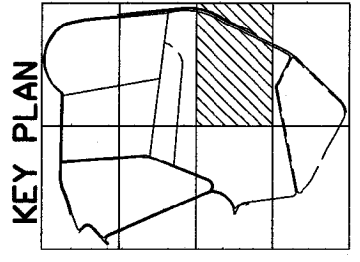
REV. NO.

0



NOTES:
 1. FOR GENERAL NOTES SEE 10W425-26.
 2. FOR DIKE RAISING NOTES, SEE 10W425-55.

EMORY RIVER-WATTS BAR LAKE
 100 YEAR FLOOD ELEVATION 748 AT RIVER MILE 2.00
 500 YEAR FLOOD ELEVATION 750.5 AT RIVER MILE 2.00



DATE	BY	CHKD	APPD	REV	DESCRIPTION
10/15/03	D.E. SMITH	B.S. BRYE	R.F. TAYLOR	1	ISSUED FOR DREDGE CELL EXPANSION
10/15/03	D.E. SMITH	B.S. BRYE	R.F. TAYLOR	2	REVISED TO SHOW DREDGE CELL EXPANSION
10/15/03	D.E. SMITH	B.S. BRYE	R.F. TAYLOR	3	REVISED TO SHOW DREDGE CELL EXPANSION
10/15/03	D.E. SMITH	B.S. BRYE	R.F. TAYLOR	4	REVISED TO SHOW DREDGE CELL EXPANSION
10/15/03	D.E. SMITH	B.S. BRYE	R.F. TAYLOR	5	REVISED TO SHOW DREDGE CELL EXPANSION
10/15/03	D.E. SMITH	B.S. BRYE	R.F. TAYLOR	6	REVISED TO SHOW DREDGE CELL EXPANSION
10/15/03	D.E. SMITH	B.S. BRYE	R.F. TAYLOR	7	REVISED TO SHOW DREDGE CELL EXPANSION
10/15/03	D.E. SMITH	B.S. BRYE	R.F. TAYLOR	8	REVISED TO SHOW DREDGE CELL EXPANSION
10/15/03	D.E. SMITH	B.S. BRYE	R.F. TAYLOR	9	REVISED TO SHOW DREDGE CELL EXPANSION
10/15/03	D.E. SMITH	B.S. BRYE	R.F. TAYLOR	10	REVISED TO SHOW DREDGE CELL EXPANSION
10/15/03	D.E. SMITH	B.S. BRYE	R.F. TAYLOR	11	REVISED TO SHOW DREDGE CELL EXPANSION
10/15/03	D.E. SMITH	B.S. BRYE	R.F. TAYLOR	12	REVISED TO SHOW DREDGE CELL EXPANSION

SCALE: 1"=50'
 YARD

DREDGE CELL LATERAL EXPANSION
 STAGE 5
 SHEET 4

DESIGNED BY: D.E. SMITH
 CHECKED BY: B.S. BRYE
 APPROVED BY: R.F. TAYLOR

DESIGNED BY: R.L. FETTY
 CHECKED BY: E.E. PARREY
 APPROVED BY: J.G. ADAIR

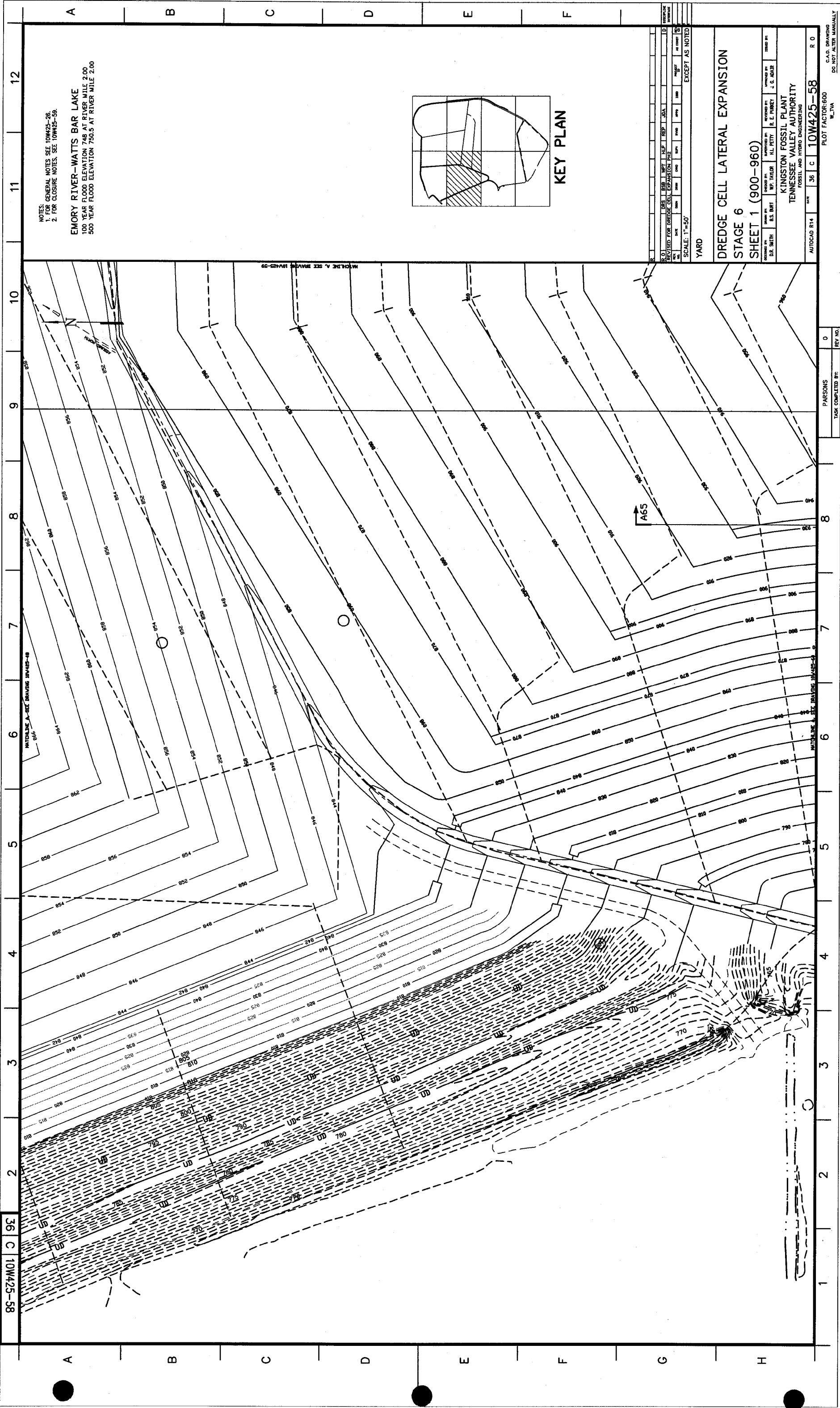
KINGSTON FOSSIL PLANT
 TENNESSEE VALLEY AUTHORITY
 FOSSIL AND HYDRO ENGINEERING

AUTOCAD R14
 DATE: 3/5/03
 PLOT FACTOR: 600
 W.TVA
 R.D.
 DO NOT ALTER MANUALLY

10W425-57 C 36

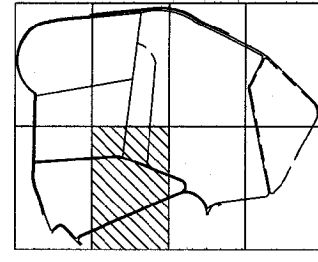
PARSONS
 TASK COMPLETED BY: 0
 REV. NO.

MATCH LINE A, SEE DRAWING 10W425-33



NOTES:
 1. GENERAL NOTES SEE 10W425-26
 2. FOR CLOSURE NOTES, SEE 10W425-59.

EMORY RIVER-WATTS BAR LAKE
 100 YEAR FLOOD ELEVATION 748 AT RIVER MILE 2.00
 500 YEAR FLOOD ELEVATION 750.5 AT RIVER MILE 2.00



KEY PLAN

DATE	BY	CHKD	APP'D	REVISION
10/11/85	J.P.	J.P.	J.P.	1.0
10/11/85	J.P.	J.P.	J.P.	1.1
10/11/85	J.P.	J.P.	J.P.	1.2
10/11/85	J.P.	J.P.	J.P.	1.3
10/11/85	J.P.	J.P.	J.P.	1.4
10/11/85	J.P.	J.P.	J.P.	1.5
10/11/85	J.P.	J.P.	J.P.	1.6
10/11/85	J.P.	J.P.	J.P.	1.7
10/11/85	J.P.	J.P.	J.P.	1.8
10/11/85	J.P.	J.P.	J.P.	1.9
10/11/85	J.P.	J.P.	J.P.	2.0

SCALE: 1"=50'
 YARD
 EXCEPT AS NOTED

DREDGE CELL LATERAL EXPANSION
STAGE 6
SHEET 1 (900-960)

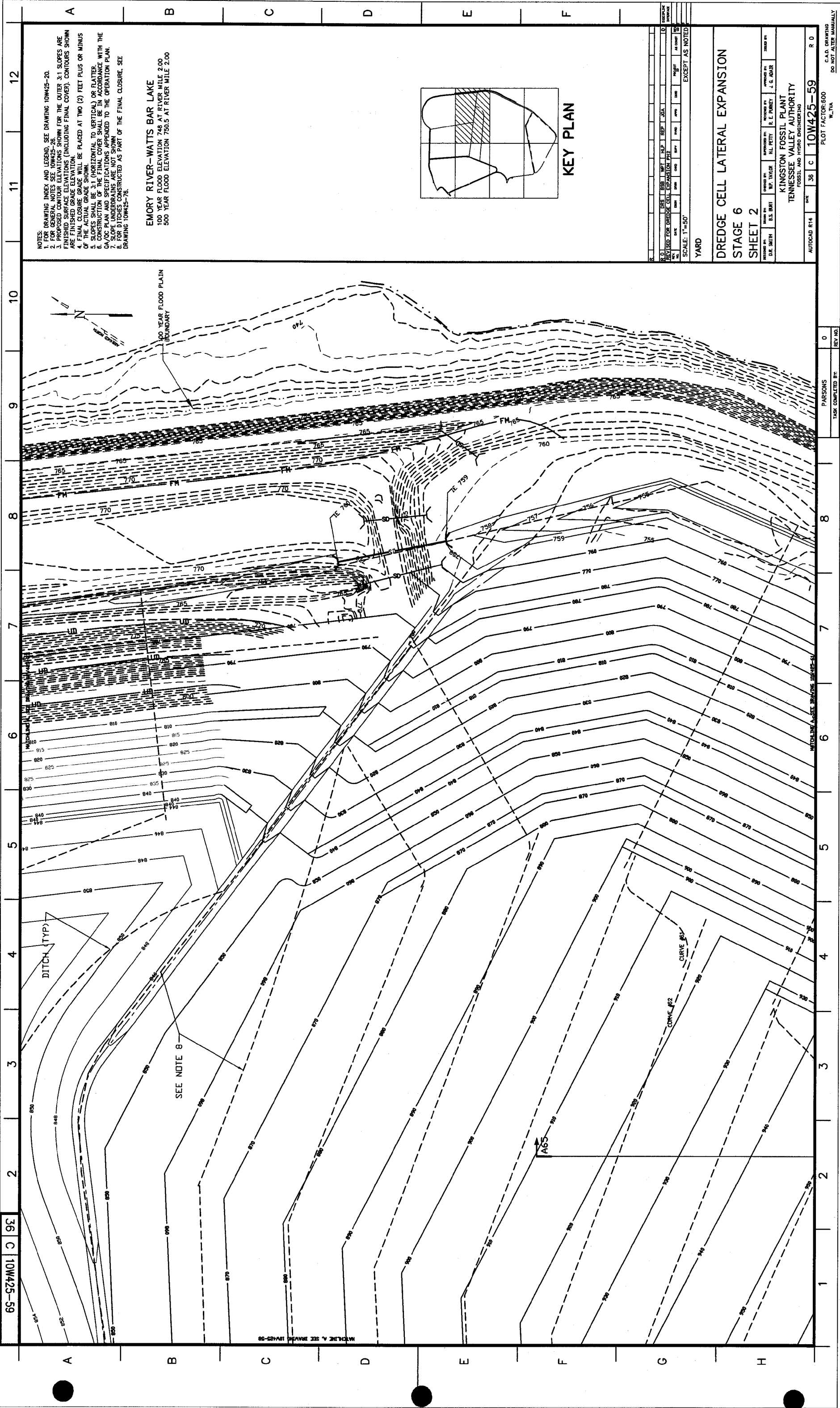
DESIGNED BY: D.E. SMITH
 CHECKED BY: S.S. BART
 DRAWN BY: W.P. TAYLOR
 SUPERVISOR: H.L. PETTY
 APPROVED BY: R.E. PARREY
 J.G. ADLER

KINGSTON FOSSIL PLANT
 TENNESSEE VALLEY AUTHORITY
 FOSSIL AND HYDRO ENGINEERING

AUTOCAD P14
 PLOT FACTOR: 600
 W.TVA
 10W425-58
 R.O.

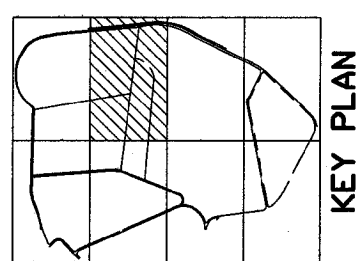
85-SZ-M01 C 9C
 10W425-58

PARSONS
 TASK COMPLETED BY: 0
 REV. NO. 0



NOTES:
 1. FOR DRAWING INDEX AND LEGEND, SEE DRAWING 10W425-20.
 2. FOR GENERAL NOTES SEE 10W425-26.
 3. PROPOSED SURFACE ELEVATIONS SHOWN FOR THE OUTER 3:1 SLOPES ARE FINISHED SURFACE ELEVATIONS (INCLUDING FINAL COVER). CONTOURS SHOWN ARE FINISHED GRADE ELEVATION.
 4. FINAL CLOSURE GRADE WILL BE PLACED AT TWO (2) FEET PLUS OR MINUS OF THE ACTUAL GRADE SHOWN (HORIZONTAL TO VERTICAL) OR FLATTER.
 5. CONSTRUCTION OF THE FINAL COVER SHALL BE IN ACCORDANCE WITH THE DA/DC PLAN AND SPECIFICATIONS APPENDED TO THE OPERATION PLAN.
 6. SLOPE UNDERDRAINS ARE NOT SHOWN.
 7. FOR DITCHES CONSTRUCTED AS PART OF THE FINAL CLOSURE, SEE DRAWING 10W425-76.

EMORY RIVER-WATTS BAR LAKE
 100 YEAR FLOOD ELEVATION 748 AT RIVER MILE 2.00
 500 YEAR FLOOD ELEVATION 750.5 AT RIVER MILE 2.00



NO.	DATE	BY	CHKD.	APPV.	DESC.
1	08/11/88	REP. T. JOA			REVISED FOR DREDGE CELL EXPANSION
2	08/11/88	REP. T. JOA			REVISED FOR DREDGE CELL EXPANSION
3	08/11/88	REP. T. JOA			REVISED FOR DREDGE CELL EXPANSION
4	08/11/88	REP. T. JOA			REVISED FOR DREDGE CELL EXPANSION
5	08/11/88	REP. T. JOA			REVISED FOR DREDGE CELL EXPANSION
6	08/11/88	REP. T. JOA			REVISED FOR DREDGE CELL EXPANSION
7	08/11/88	REP. T. JOA			REVISED FOR DREDGE CELL EXPANSION
8	08/11/88	REP. T. JOA			REVISED FOR DREDGE CELL EXPANSION
9	08/11/88	REP. T. JOA			REVISED FOR DREDGE CELL EXPANSION
10	08/11/88	REP. T. JOA			REVISED FOR DREDGE CELL EXPANSION
11	08/11/88	REP. T. JOA			REVISED FOR DREDGE CELL EXPANSION
12	08/11/88	REP. T. JOA			REVISED FOR DREDGE CELL EXPANSION

SCALE: 1"=50'
 YARD

DREDGE CELL LATERAL EXPANSION
STAGE 6
SHEET 2

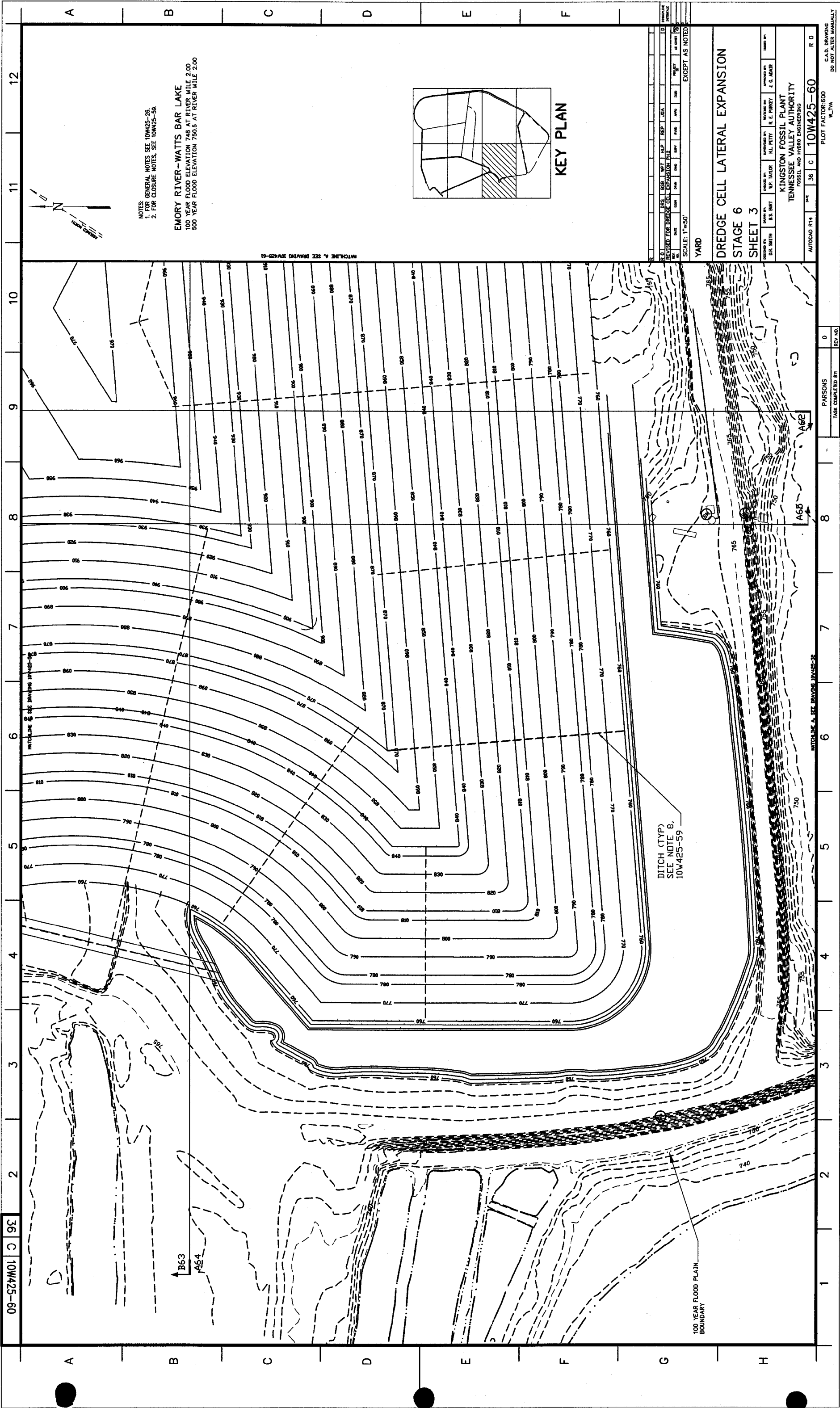
DESIGNED BY: B.S. BERT
 CHECKED BY: R.F. TAYLOR
 APPROVED BY: R.E. PARNEY, J.G. ADAIR

KINGSTON FOSSIL PLANT
 TENNESSEE VALLEY AUTHORITY
 FOSSIL AND HYDRO ENGINEERING

AUTOCAD 814
 SHEET NO. 36 C 10W425-59
 PLOT FACTOR: 600
 W.TVA
 DO NOT ALTER MANUALLY

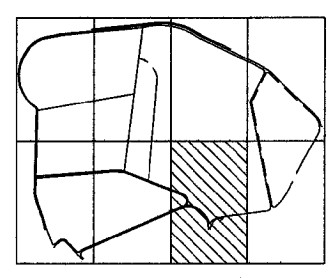
65-527M01 C 9C

PARSONS
 TASK COMPLETED BY: 0
 REV. NO.



NOTES:
 1. FOR GENERAL NOTES SEE 10W425-26.
 2. FOR CLOSURE NOTES, SEE 10W425-58.

EMORY RIVER-WATTS BAR LAKE
 100 YEAR FLOOD ELEVATION 748 AT RIVER MILE 2.00
 500 YEAR FLOOD ELEVATION 750.5 AT RIVER MILE 2.00



KEY PLAN

DITCH (TYP)
 SEE NOTE 6,
 10W425-59

100 YEAR FLOOD PLAIN
 BOUNDARY

SCALE: 1"=50'
 YARD

DREDGE CELL LATERAL EXPANSION
STAGE 6
SHEET 3

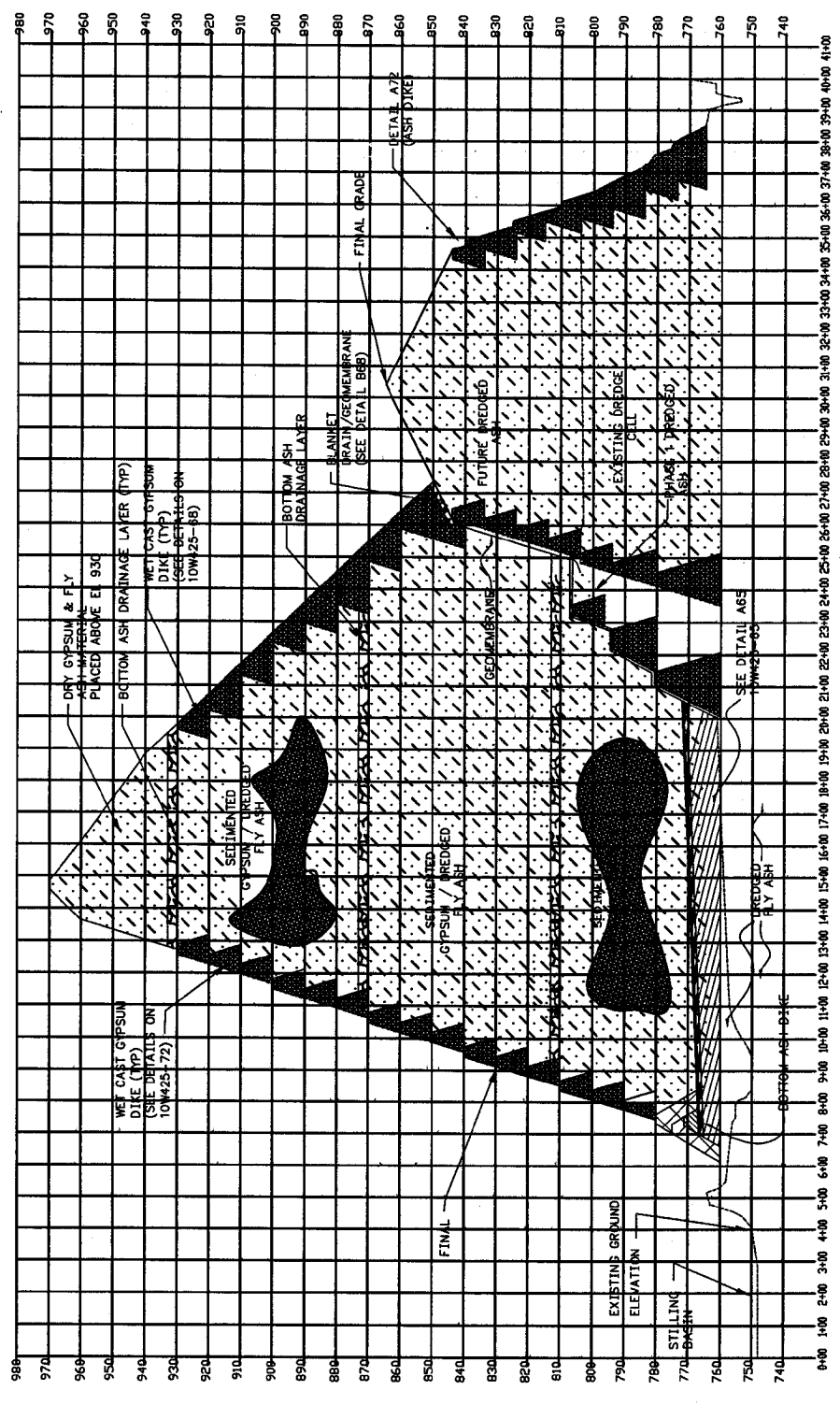
DESIGNED BY	D.E. SMITH	CHECKED BY	B.S. BREY	APPROVED BY	R.E. PINEY	DATE	10/25/00
DESIGNED BY	R.F. TAYLOR	CHECKED BY	R.L. PETTY	APPROVED BY	J.G. ADUR	DATE	10/25/00
KINGSTON FOSSIL PLANT TENNESSEE VALLEY AUTHORITY FOSSIL AND HYDRO ENGINEERING							
AUTOCAD R14	DATE	3/6	C	10W425-60	R.D.	PLOT FACTOR: 600	
						W.TVA DO NOT ALTER MANUALLY	

09-C2W01 C 36

PARSONS	0
TASK COMPLETED BY:	REV. NO.

A B C D E F

NOTES:
1. FOR DRAWINGS LIST AND LEGEND SEE 10W425-20
2. FOR GENERAL NOTES SEE 10W425-26



SECTION A62
SCALE: 1" = 200' HORIZONTAL
1" = 20' VERTICAL

DATE	NO.	BY	CHKD.	APP'D.	REVISION
10/11/00	1	D.S. SMITH	H.L. RITTY	R.E. PARKER	J.G. ADLER
SCALE: 1"=100'					
YARD					
DREDGE CELL LATERAL EXPANSION					
SECTIONS					
SHEET #1					
KINGSTON FOSSIL PLANT TENNESSEE VALLEY AUTHORITY FOSSIL AND HYDRO ENGINEERING					
AUTOCAD R14	DATE	36	C	10W425-62	R 0
PLOT FACTOR: 1200 W.TVA					
C.A.D. DRAWING DO NOT ALTER MANUALLY					

TASK COMPLETED BY:	PARSONS	REV. NO.	0
--------------------	---------	----------	---