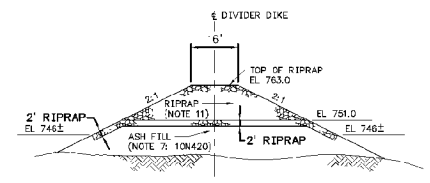
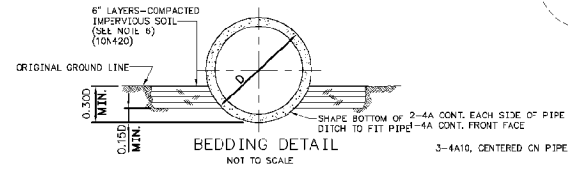


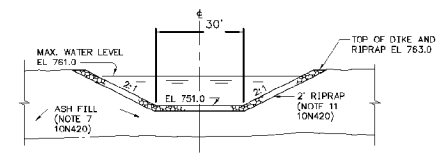
DETAIL B
SCALE: 1"=20'



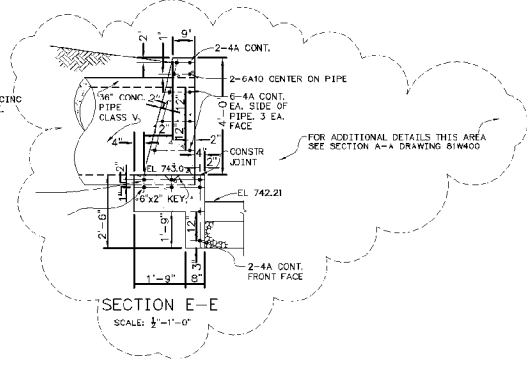
SECTION AA-AA
SCALE: 1"=20'



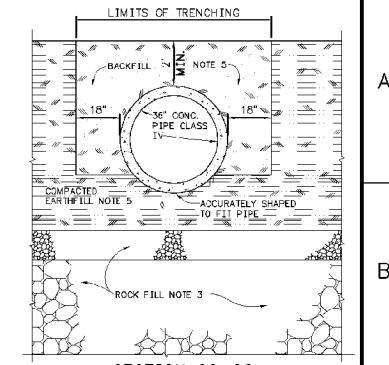
BEDDING DETAIL
NOT TO SCALE



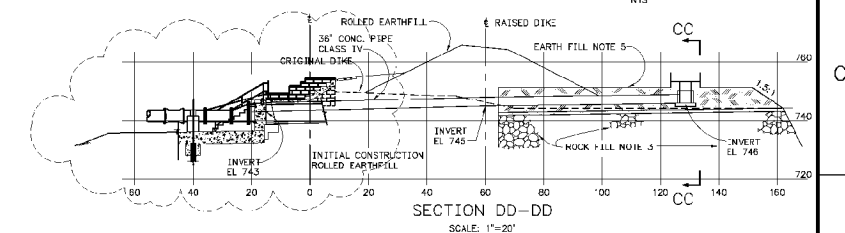
SECTION BB-BB
SCALE: 1"=20'



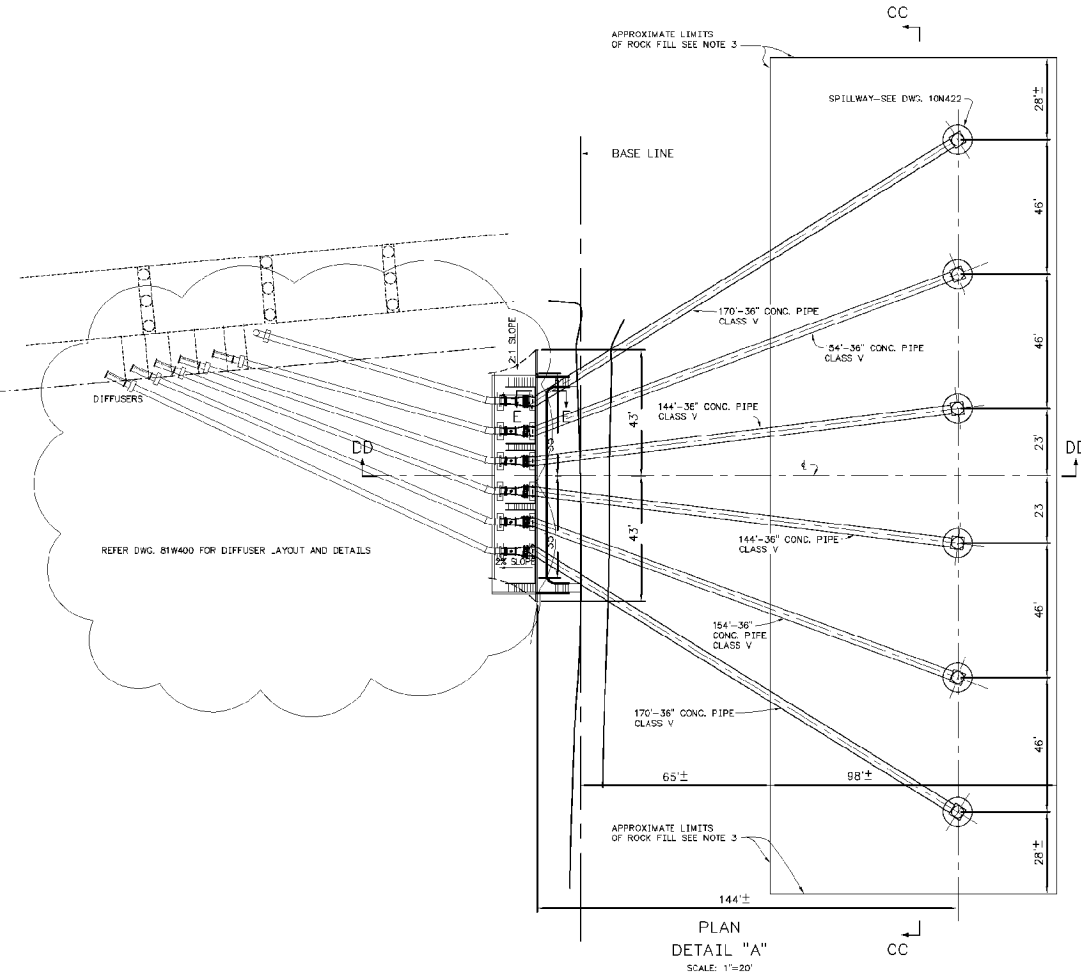
SECTION E-E
SCALE: 1/2"=1'-0"



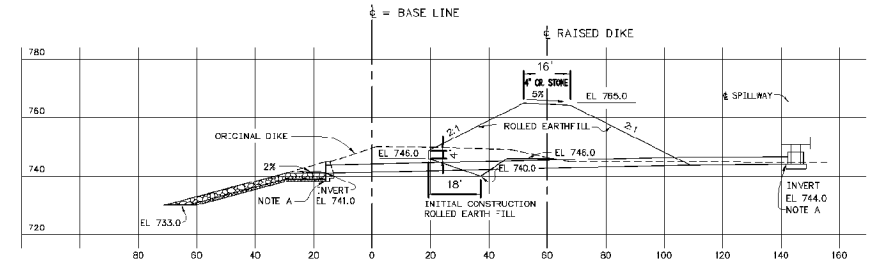
SECTION CC-CC
NOT TO SCALE



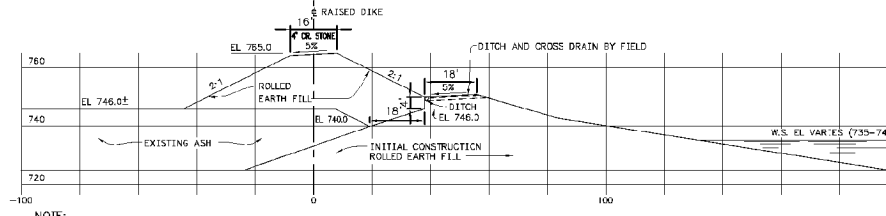
SECTION DD-DD
SCALE: 1"=20'



PLAN DETAIL "A"
SCALE: 1"=20'



SECTION B-B
SCALE: 1"=20'
(10N420)



SECTION A-A
SCALE: 1"=20'
(10N420)

- NOTES:
- FOR ADDITIONAL NOTES SEE DWG. 10N420. NOTES BELOW ARE FOR REVISION R1.
 - SPILLWAYS, OUTLET PIPES, AND HEADWALLS WERE INSTALLED IN 1976. OUTLET PIPES ARE CRACKED AND JOINTS OPEN GENERALLY OVER HALF THE PIPE LENGTH TOWARD THE SPILLWAYS. ALL PIPES ARE TO BE REMOVED AND REPLACED. THE SPILLWAY BOXES AND HEADWALLS ARE TO BE RAISED 2 FEET AND THE PIPES LAID TO NEW GRADE AS SHOWN ON SECTION DD-DD.
 - THE ROCKFILL SHOWN ON PLAN-DETAIL "A" AND SECTIONS DD-DD AND CC-CC IS THE ROCKFILL PLACED IN ACCORDANCE WITH THE REPORT FROM J.P. HILLIER STIVERS TO CIVIL ENGINEERING AND DESIGN BRANCH FILES, DATED AUGUST 27, 1976. COPIES TO DIVISION OF CONSTRUCTION (C.M. MULL AND GENE FARMER) AMONG OTHERS. THE SPILLWAY BOXES AND PART OF THE OUTLET PIPE LENGTHS WERE INSTALLED ON THE ROCKFILL.
 - COMPACTED EARTH FILL IS TO BE PLACED ON THE ROCKFILL TO PROVIDE NEW FOUNDATION FOR THE SPILLWAY BOXES AND OUTLET PIPES. BEFORE THE EARTHFILL IS PLACED, THE ROCKFILL SHALL BE TESTED FOR SOUNDNESS. SEVERAL PASSES OF HEAVY EARTH MOVING EQUIPMENT SHALL BE MADE ON THE ROCKFILL TO ENSURE THAT THE ROCKFILL IS STABLE AND NON-SETTLING. IT MUST BE ASSURED THAT THERE IS A MINIMUM OF 6" OF COMPACTED CRUSHED STONE ON THE ROCKFILL TO PREVENT MIGRATION OF COMPACTED EARTH FILL INTO ROCKFILL.
 - COMPACTED EARTH FILL SHALL BE PLACED TO 2 FEET ABOVE TOP OF PIPE IN ACCORDANCE WITH NOTE 4 ON DWG. 10N420. TRENCHED AS SHOWN ON SECTION CC-CC, THE OUTLET PIPES LAID, AND THE PIPES BACKFILLED IN ACCORDANCE WITH NOTE 6 ON DWG. 10N420. THE SPILLWAY BOXES SHALL BE RESET ON THE COMPACTED EARTH FILL AND A NEW HEADWALL CONSTRUCTED. THE EARTH FILL AROUND THE SPILLWAY BOXES SHALL BE REMOVED TO EL 745 OR LOWER WHEN THE INSTALLATION OF THE SPILLWAYS, PIPES, AND HEADWALL IS COMPLETE. THE EARTH FILL SHALL BE REMOVED FROM A STRIP 10' EACH SIDE OF THE CENTERLINE OF THE SPILLWAY BOXES AND EXTENDING COMPLETELY BETWEEN ALL SPILLWAYS.

NOTE A:
STRUCTURES TO BE ON FIRM FOUNDATION. IF NATURAL GROUND IS NOT FIRM, REMOVE TO DEPTH OF 4' AND REPLACE WITH COMPACTED FILL.

PROJECT REVISION HISTORY

REV.	DATE	ISSUED FOR	BY	CHKD.	APP.	DESCRIPTION
R 4	06-05-03	CRN	SAK	PSN	ETK	ISSUED FOR P1C K1F-03-419/RO (PARENT DCN K1F 02-5) APP PER EDMS B63 02C312 251
R 5	04-19-04	WMP	WHL	PSN	ETK	ISSUED FOR P1C K1F-03-419/RO (PARENT DCN K1F 02-5) APP PER EDMS B63 02C312 251
R 3	03-10-03	CRN	SAK	PSN	ETK	ISSUED FOR P1C K1F-03-419/RO (PARENT DCN K1F 02-5) APP PER EDMS B63 02C312 251

REV.	DATE	ISSUED FOR	BY	CHKD.	APP.	DESCRIPTION
R 5	04-19-04	WMP	WHL	PSN	ETK	ISSUED FOR P1C K1F-03-419/RO (PARENT DCN K1F 02-5) APP PER EDMS B63 02C312 251
R 3	03-10-03	CRN	SAK	PSN	ETK	ISSUED FOR P1C K1F-03-419/RO (PARENT DCN K1F 02-5) APP PER EDMS B63 02C312 251

SCALE: 1"=20' EXCEPT AS NOTED

ASH POND DIKE
SECTION & DETAILS

DESIGNED BY: D.R. GALLOWAY	DRAWN BY: J.R. LOY	CHECKED BY: D.R. GALLOWAY	APPROVED BY: L.P.H. STIVERS	REVISION BY:	ISSUED BY:
KINGSTON FOSSIL PLANT TENNESSEE VALLEY AUTHORITY FOSSIL AND HYDRO ENGINEERING					
AUTOCAD R14	DATE: 5-20-76	SHEET: 36	PROJECT: C	DWG. NO.:	10W421

COMPANION DRAWING: 10N420, N422, N423 HWY. PROJECT 2102

